

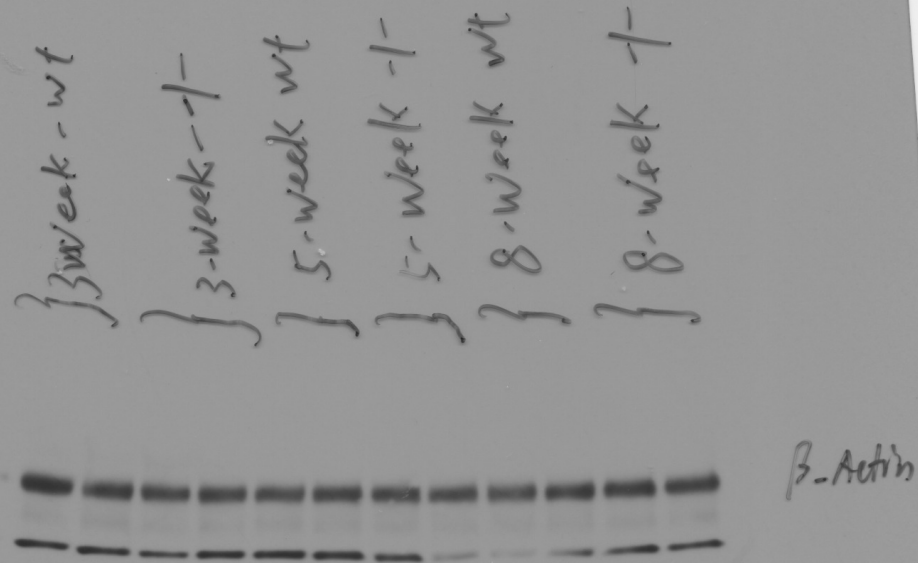
Anta

Fig. 1C-Bmp2

1/20130206-1-1

BMP2 (1:100)

1'



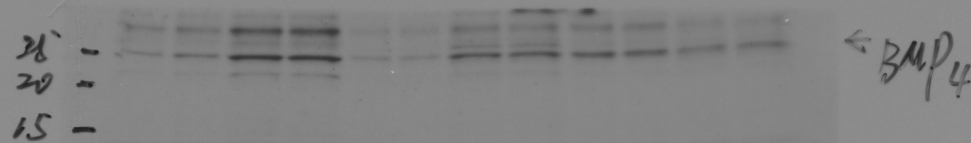
Aorta

Fig. 1C-Actin

1620130206-t2
 Re-probed
 β -Actin

1:20"

Fig. 1D -Bmp4



1620130123 封
BMP4



BMP12 ?

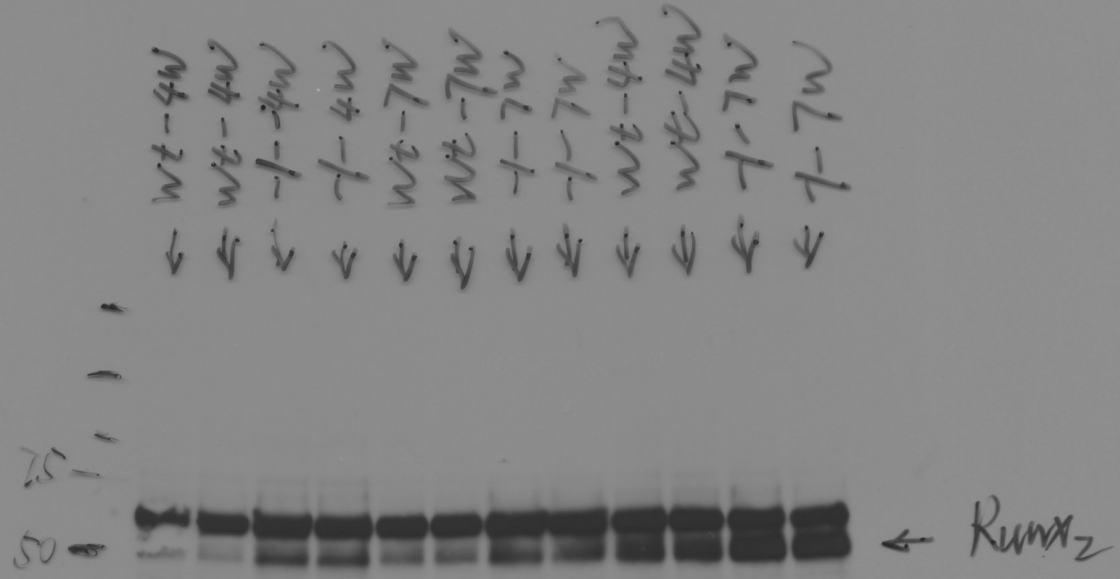


Fig. 1D-Runx2

Aorta

YL20130123-39

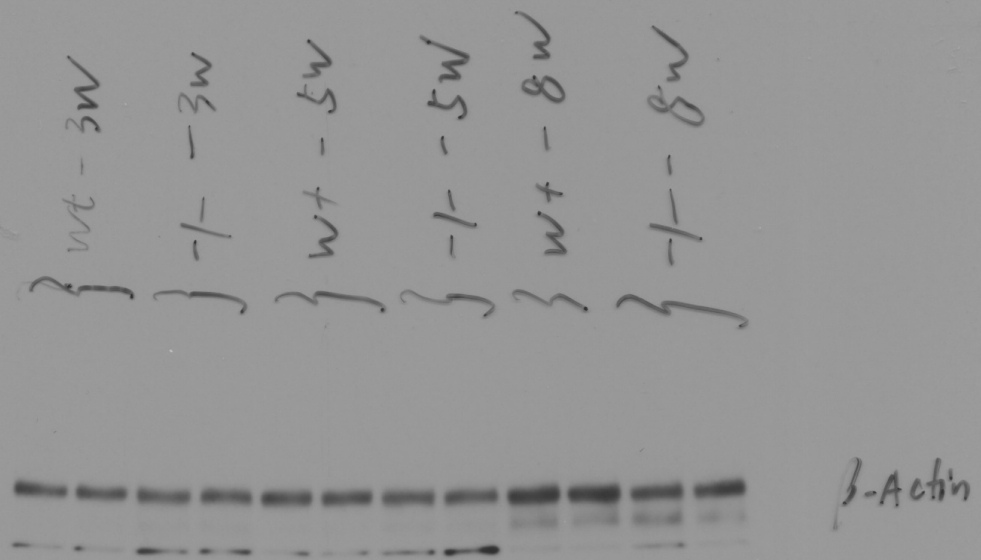


Fig. 1D-Actin

Aorta

✓ 20130123-2-1
 Reprinted
 β -Actin

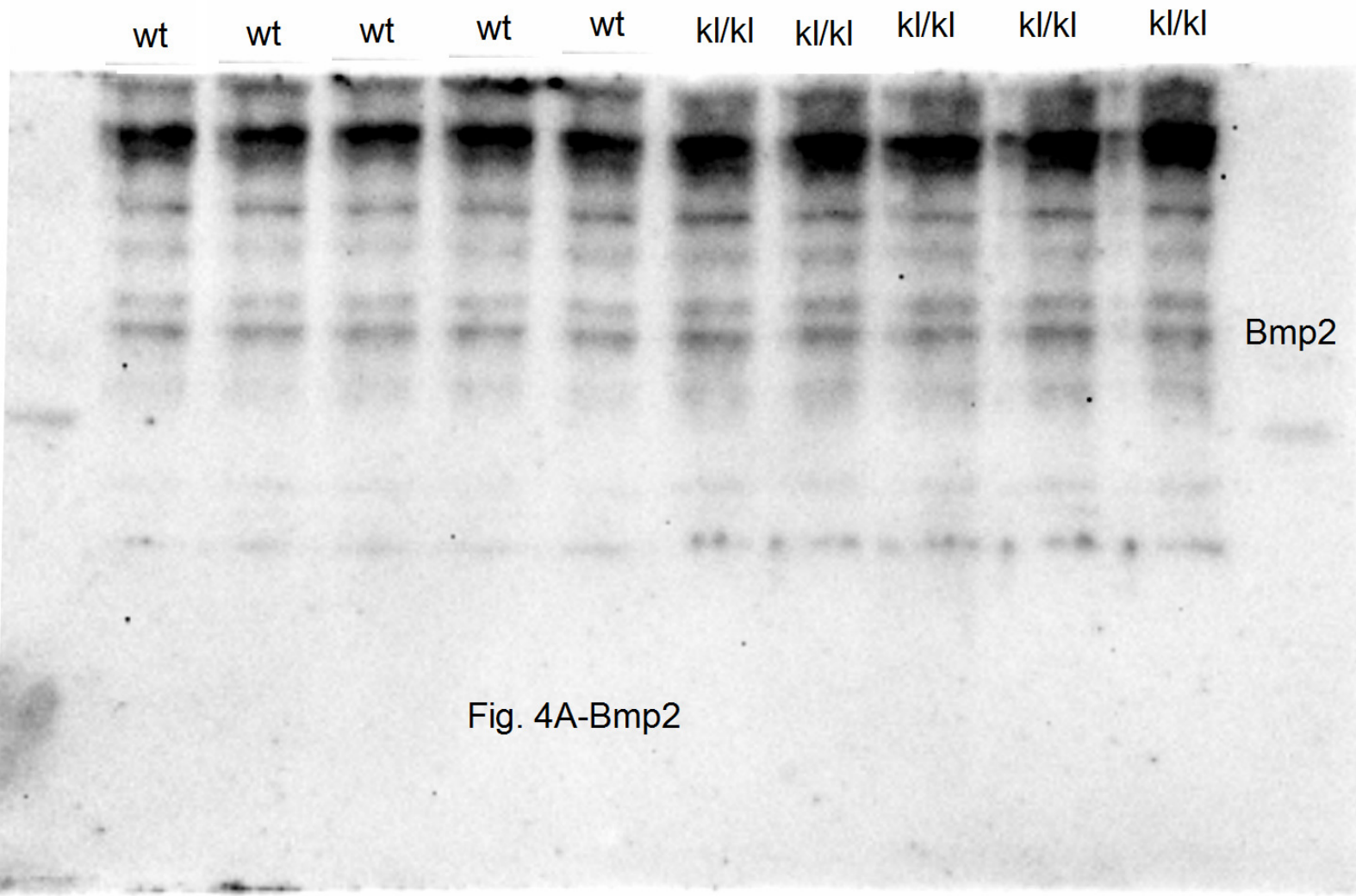


Fig. 4A-Bmp2



Fig. 4A-Runx2

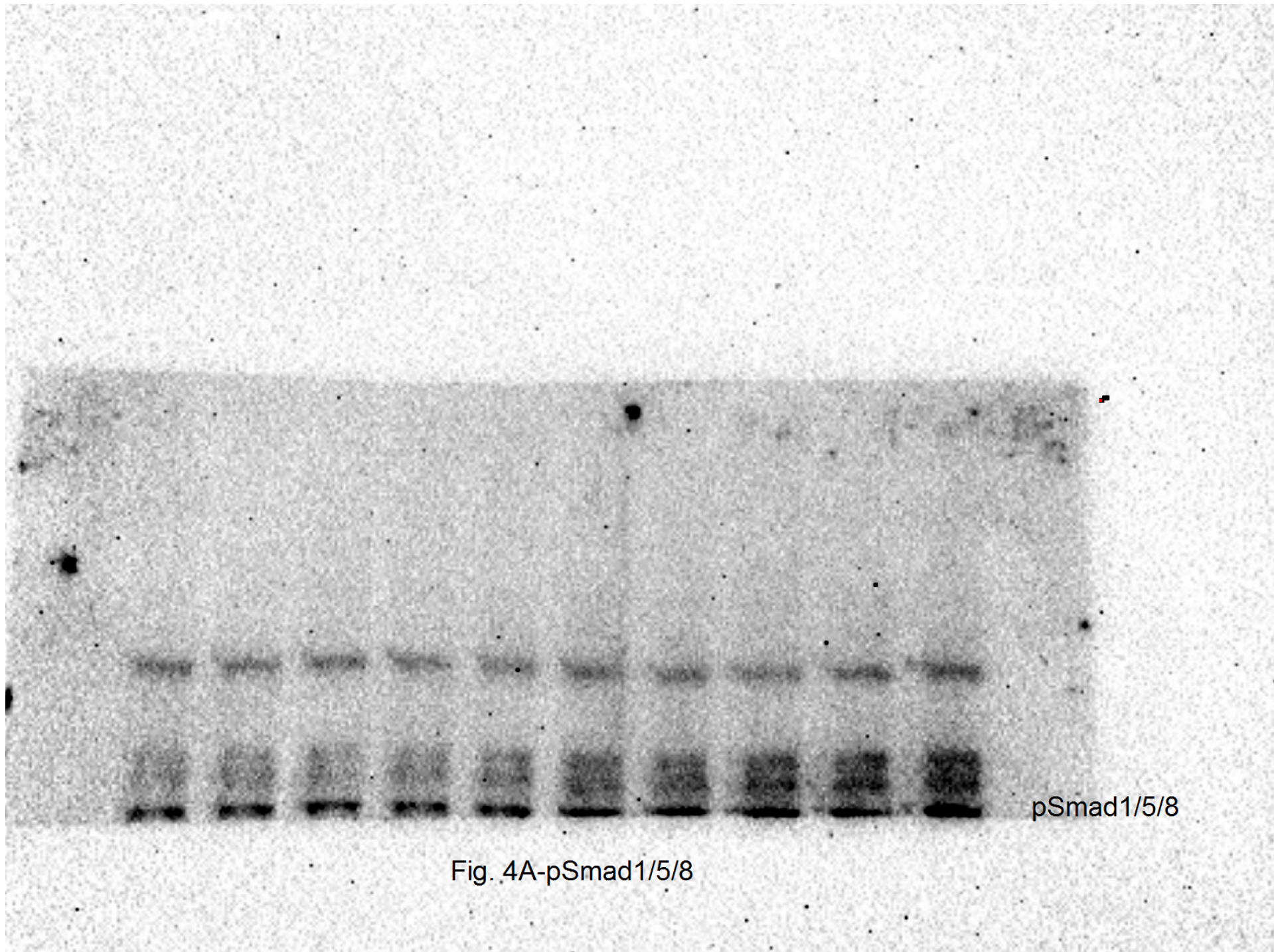


Fig. 4A-pSmad1/5/8

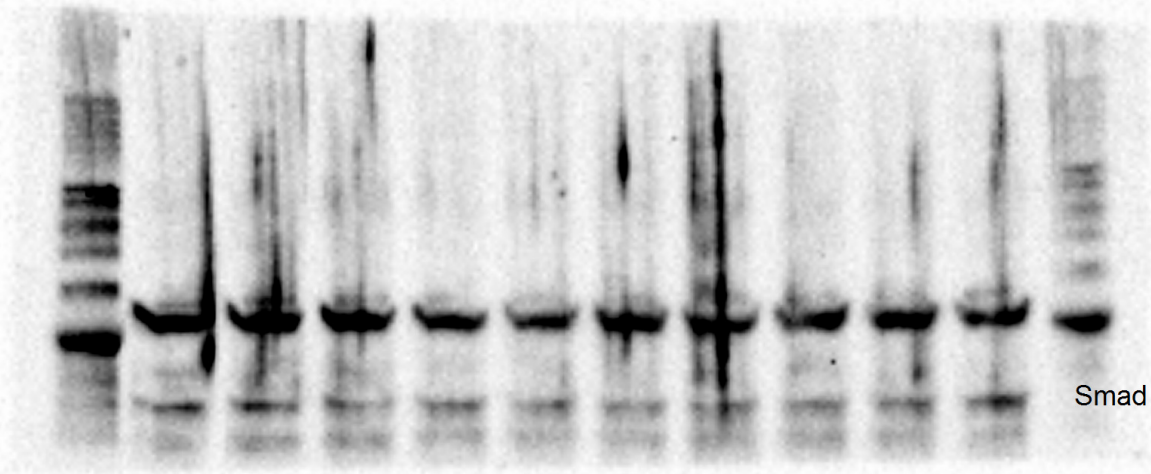
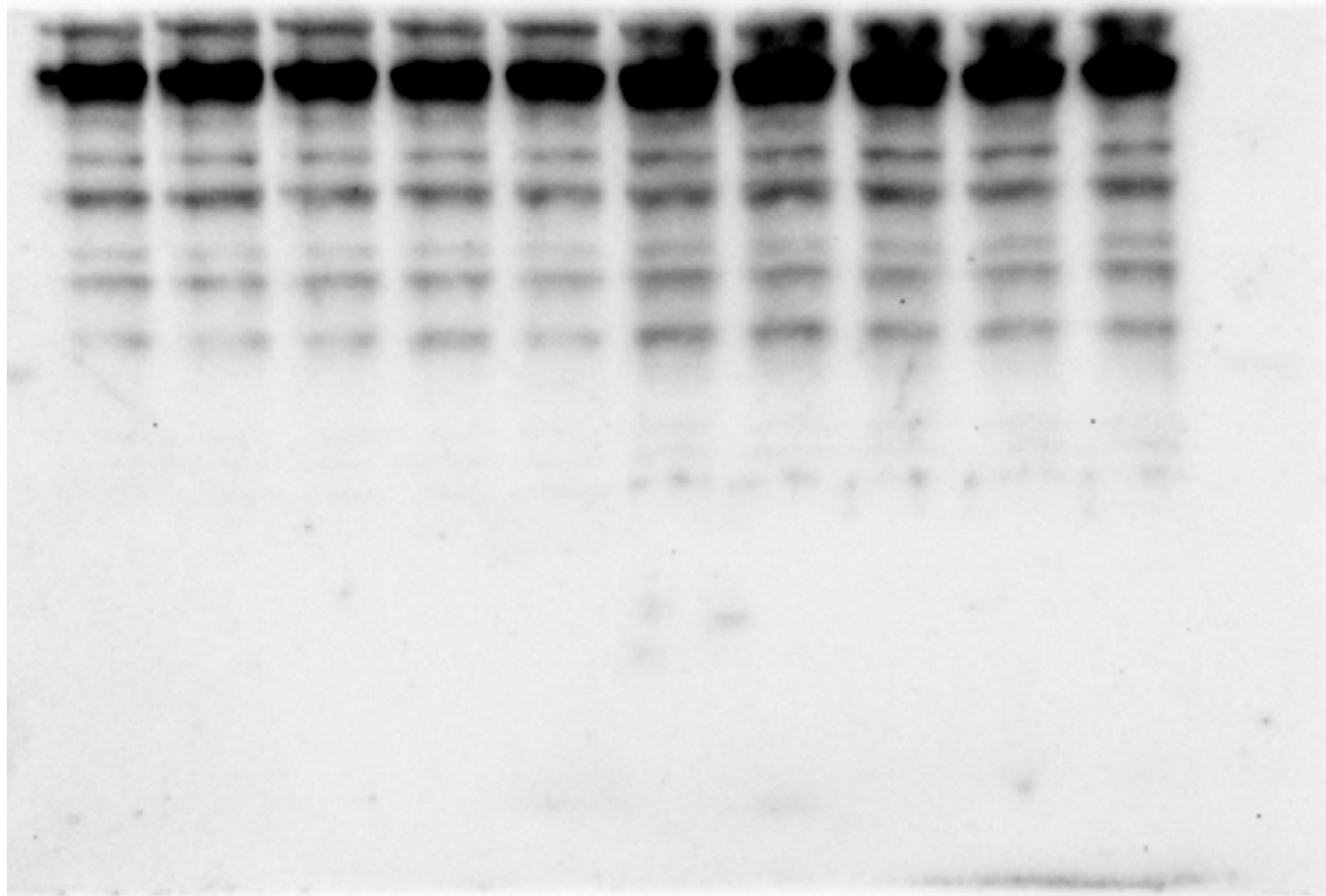


Fig. 4A-Smad



Fig. 4A-Actin

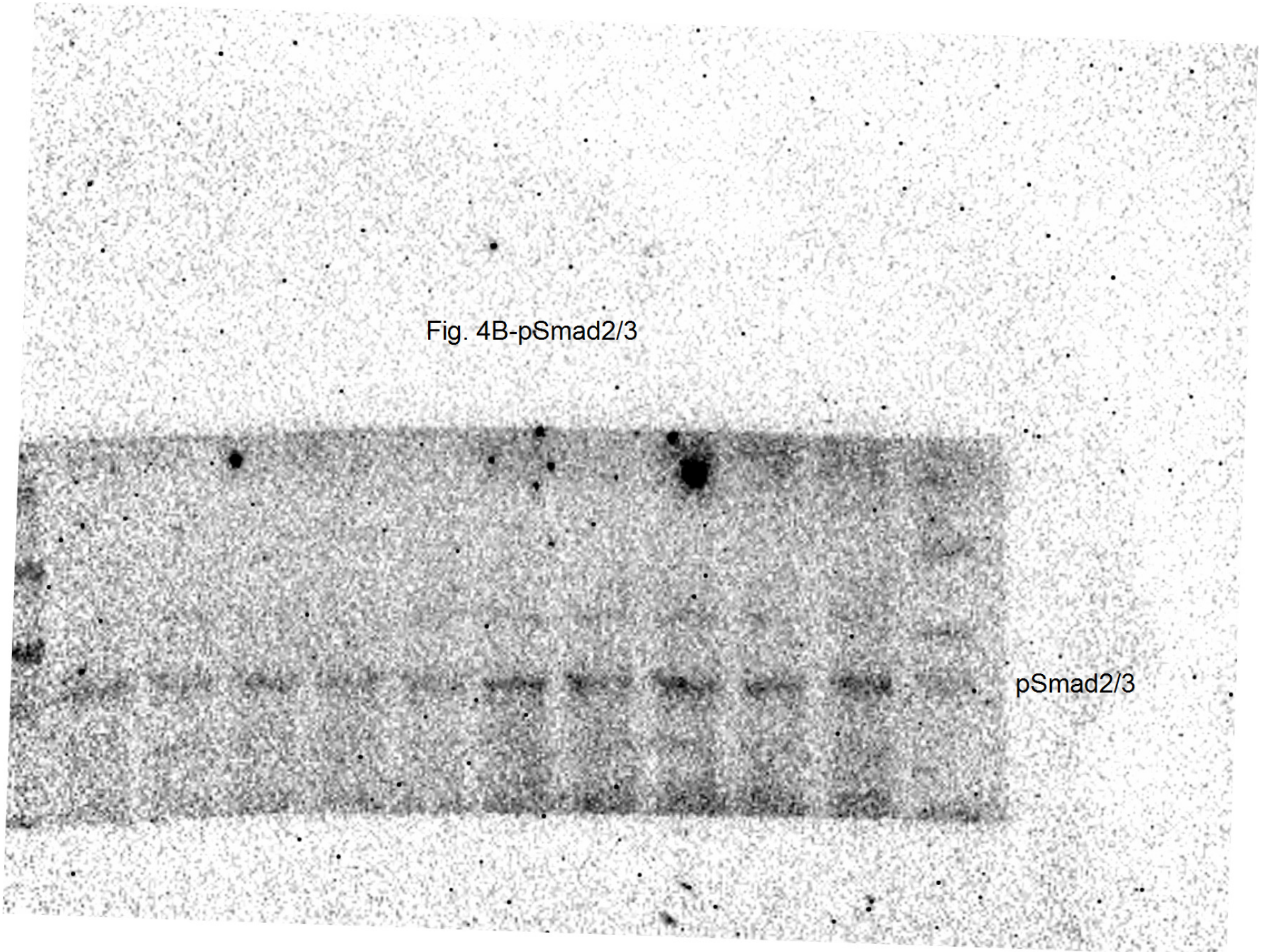
Fig. 4B-Bmp4

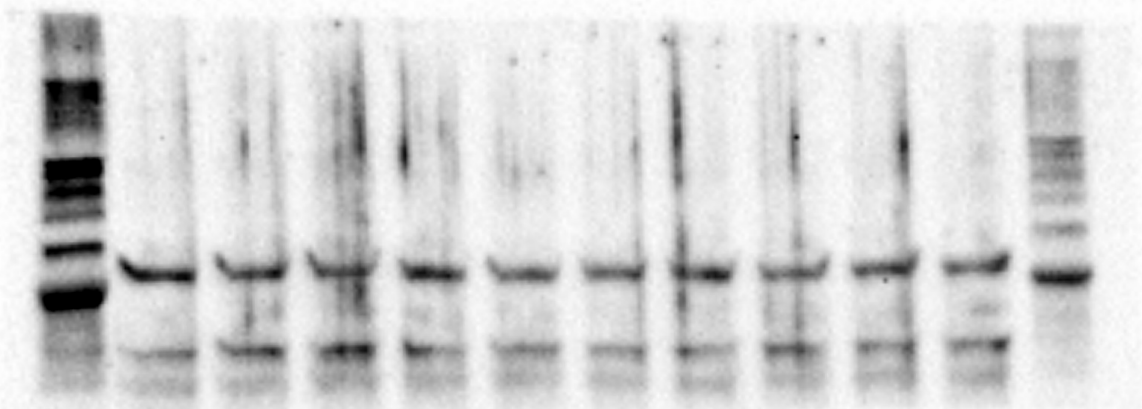


Bmp4

Fig. 4B-pSmad2/3

pSmad2/3





Smad

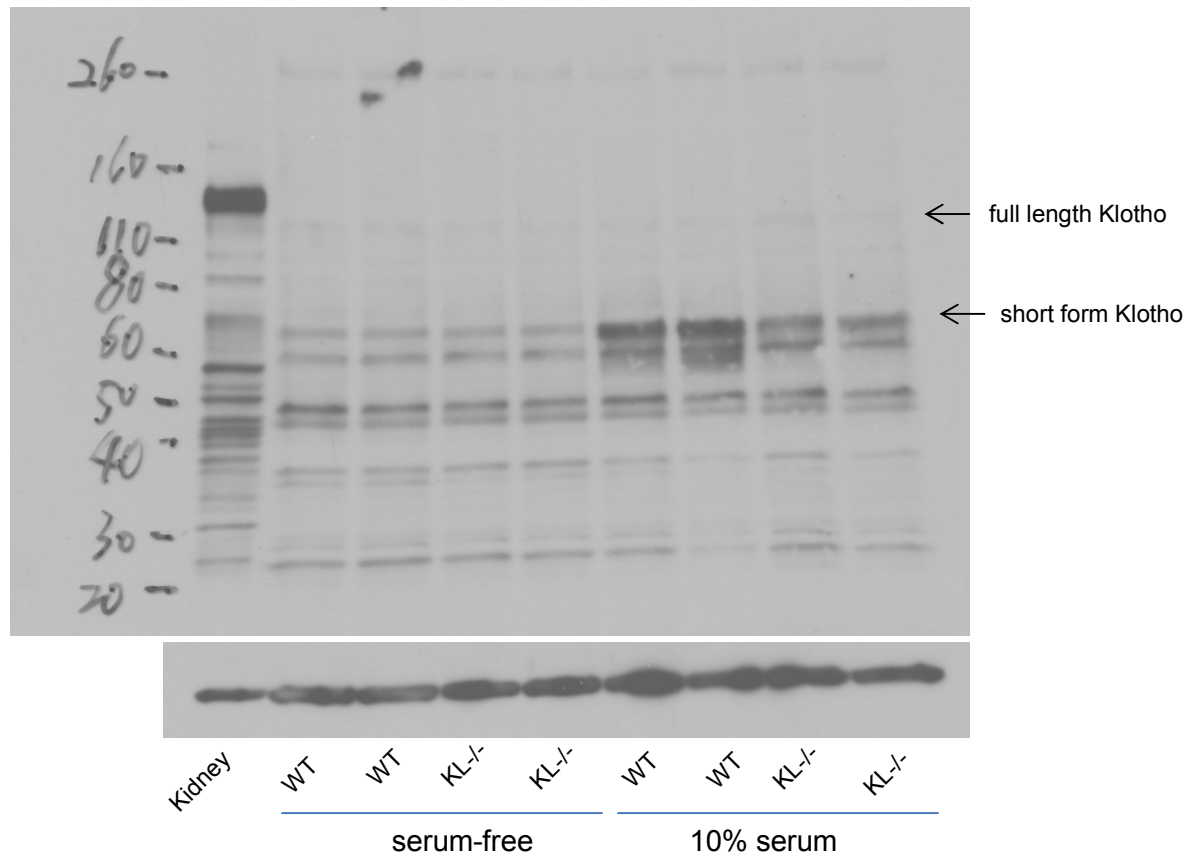
Fig. 4B-Smad



Fig. 4B-Actin

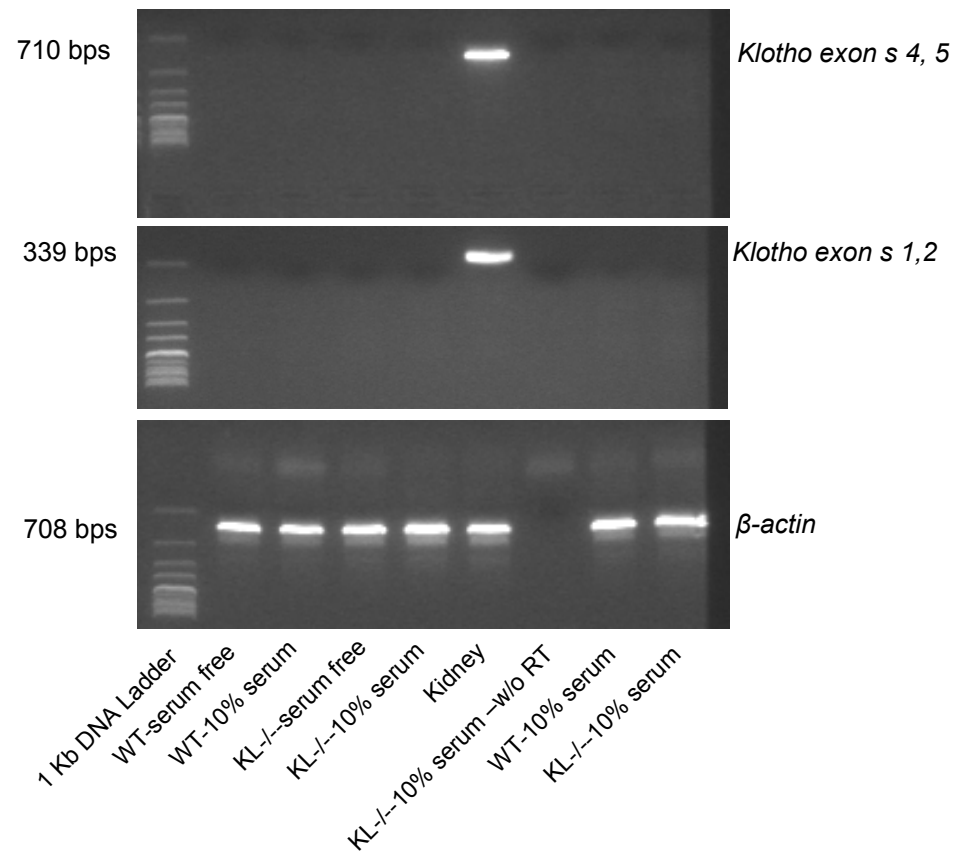
Klotho protein in ASMCs Isolated Mutant and WT Mice

Fig. 5A-Klotho



Klotho mRNA Levels in ASMCs Isolated from Mutant and WT Mice

Fig. 5B-Klotho gene



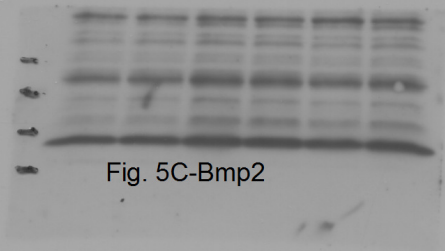


Fig. 5C-Bmp2

Bmp2

YL20130301-3-1

Bmp
12

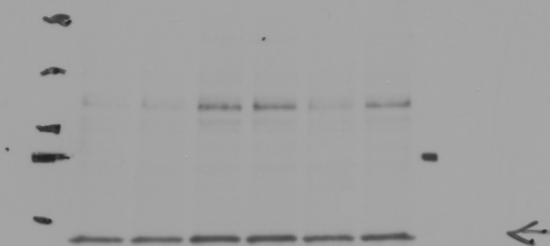


Fig. 5C-Runx2

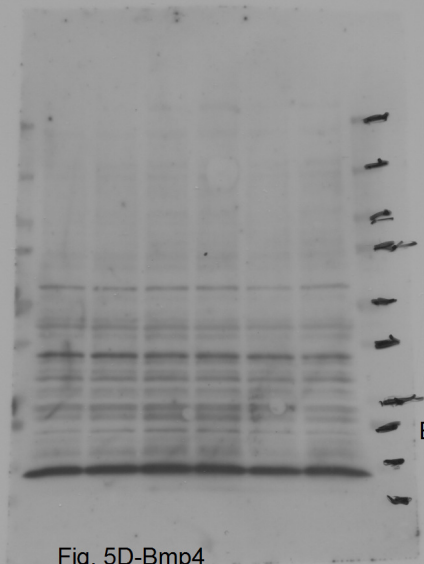
VL20130301
5-1

Runx2
1:500
1:5000
2'



Fig. 5C-actin

Y620130301-5-1
 β -actin



Bmp4

Fig. 5D-Bmp4

✓ 20130301-4-1
BMP4

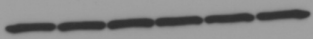


Fig. 5D-actin

162030301-3-
B-Actin

2