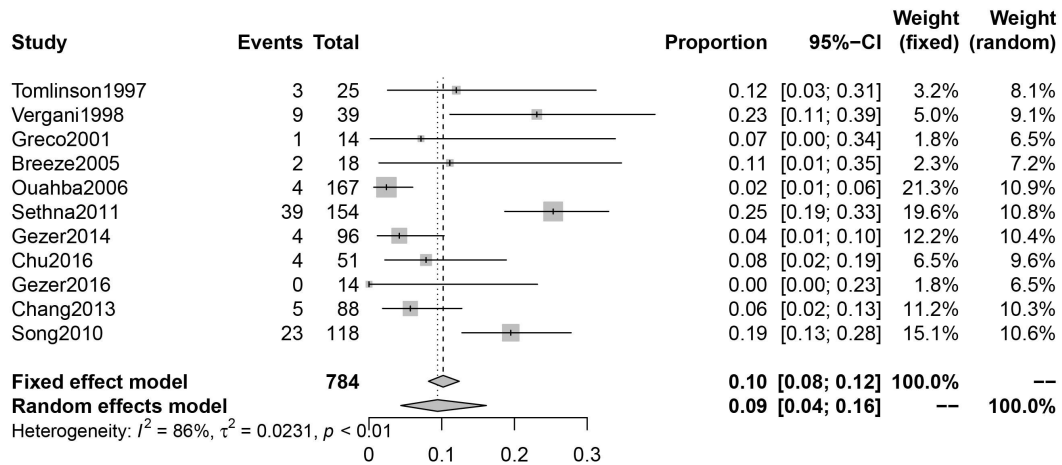


**Supplementary Table1: Quality assessment of included studies evaluated by NOS.**

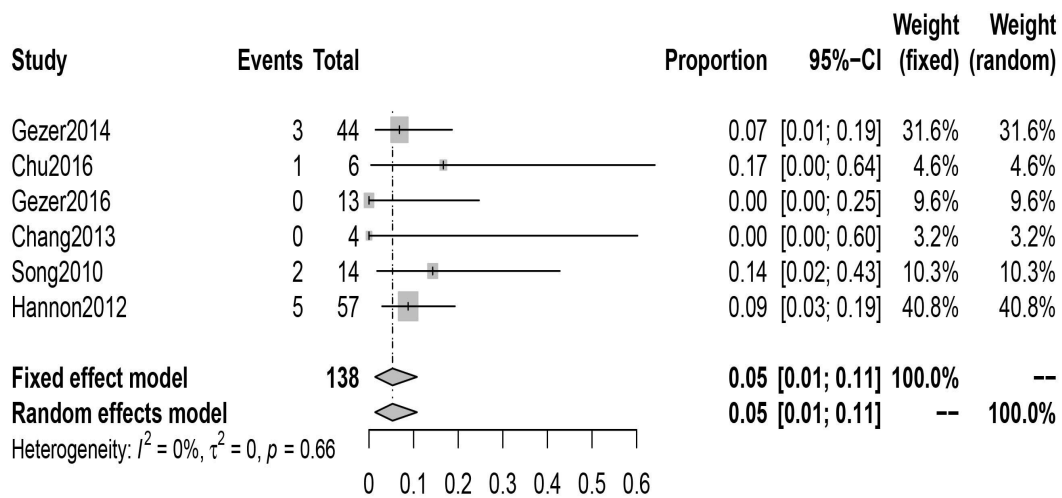
Study	Selection	Comparability	Outcomes	Total scores
Tomlinson <sup>4</sup>	4	2	2	8
Vergani <sup>5</sup>	4	1	2	7
Greco <sup>6</sup>	4	2	2	8
Gaglioti <sup>7</sup>	4	2	1	7
Breeze <sup>8</sup>	4	1	2	7
Ouahba <sup>9</sup>	4	2	2	8
Weichert <sup>10</sup>	4	2	2	8
Madazli <sup>11</sup>	4	1	1	6
Sethna <sup>12</sup>	4	2	2	8
Gezer <sup>13</sup>	4	2	1	7
Chu <sup>14</sup>	4	2	2	8
Gezer <sup>15</sup>	4	1	1	6
Chang <sup>16</sup>	4	1	1	6
Song <sup>17</sup>	4	2	2	8
Zhang <sup>22</sup>	4	1	2	7
Li <sup>19</sup>	4	2	2	8
Peng <sup>21</sup>	4	2	2	8
Hannon <sup>18</sup>	4	1	1	6
Shaffer <sup>23</sup>	4	1	2	7
Donnelly <sup>20</sup>	4	1	1	6
Hu <sup>24</sup>	4	2	2	8
Bardin <sup>26</sup>	4	1	1	6
Duan <sup>25</sup>	4	1	1	6

NOS: The Newcastle-Ottawa scale. Selection: 1. Representative for the population; 2. Ascertainment of exposure; 3. Consecutive patients; 4. Outcome not present at the start of the study. Outcomes: 1. Assessment of outcome well performed; 2. Chromosome abnormality well described; 3. Adequacy of patient



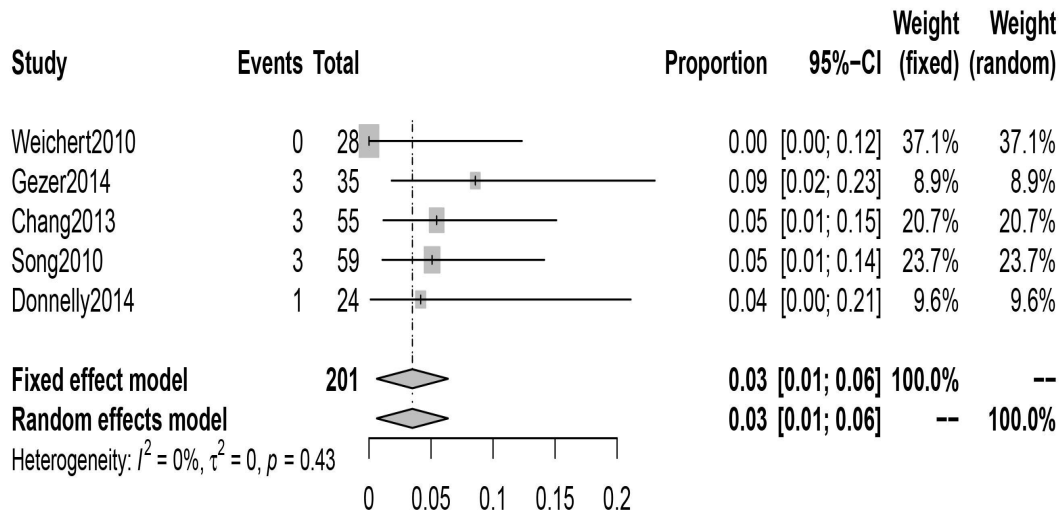
**Supplementary Figure 1: Incidence of chromosomal abnormalities in mild VM.**

CI: Confidence interval; VM: Ventriculomegaly.



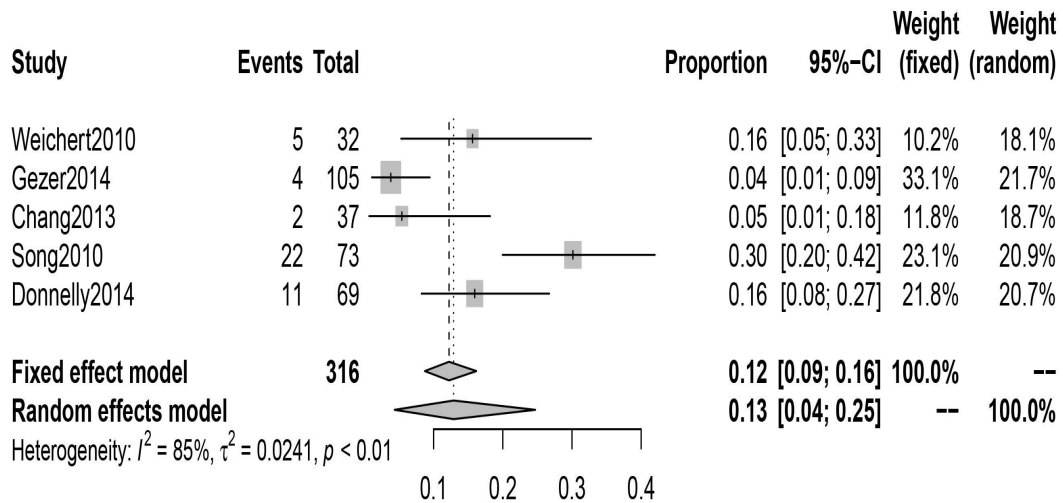
**Supplementary Figure 2: Incidence of chromosomal abnormalities in severe VM.**

CI: Confidence interval; VM: Ventriculomegaly.



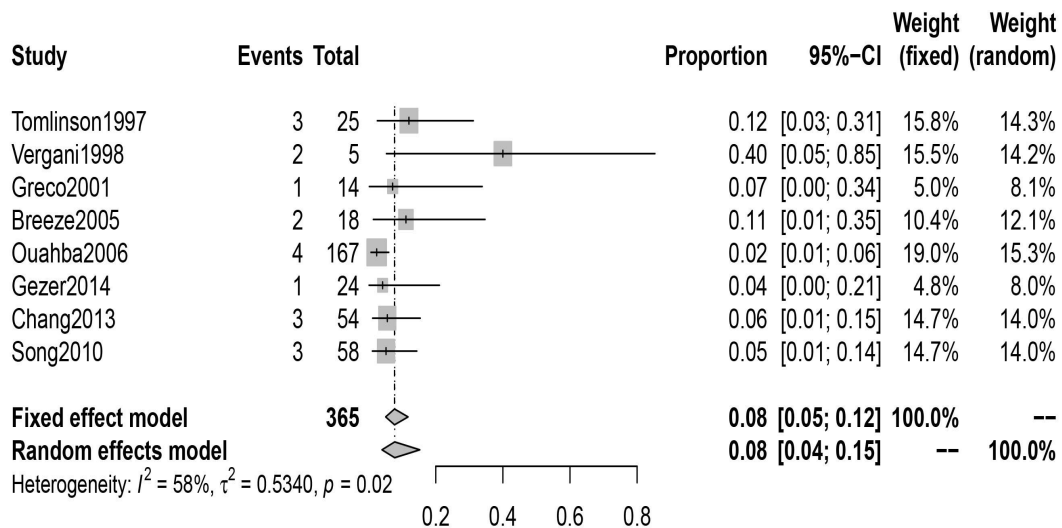
**Supplementary Figure 3:** Incidence of chromosomal abnormalities in isolated VM.

CI: Confidence interval; VM: Ventriculomegaly.

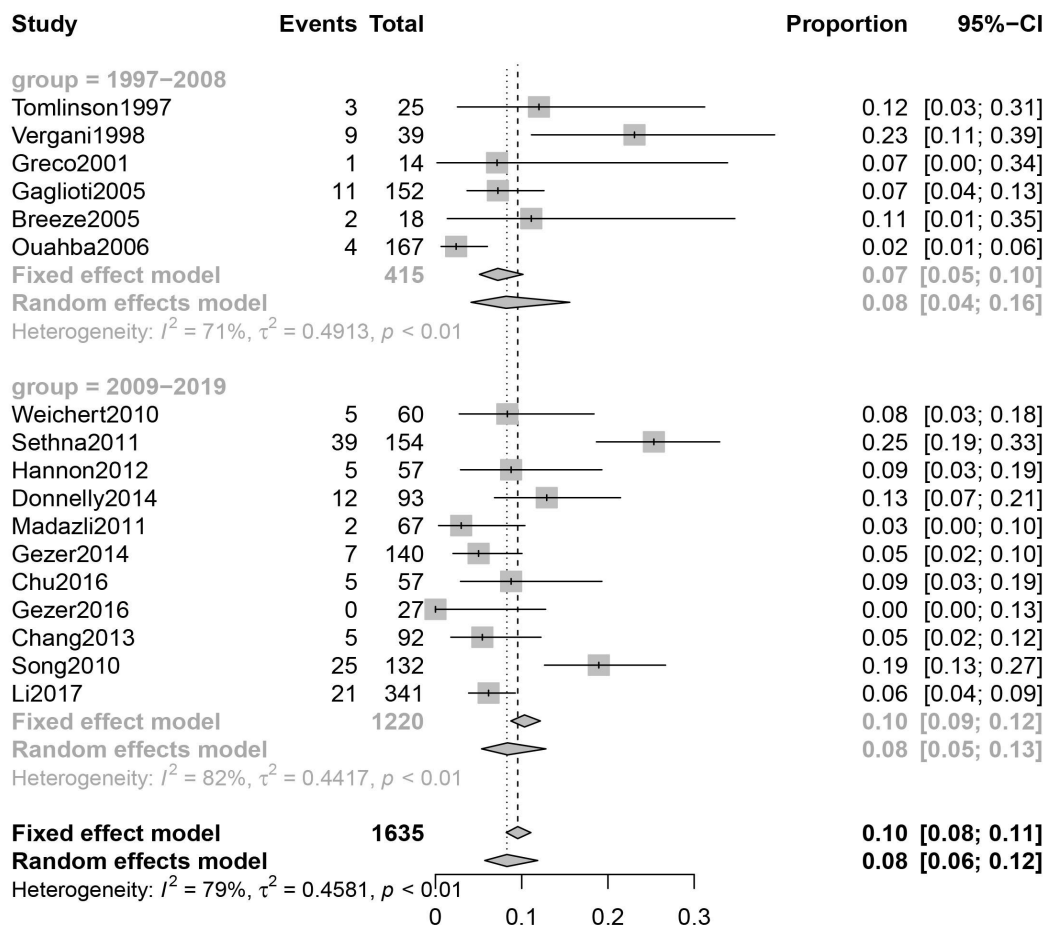


**Supplementary Figure 4:** Incidence of chromosomal abnormalities in

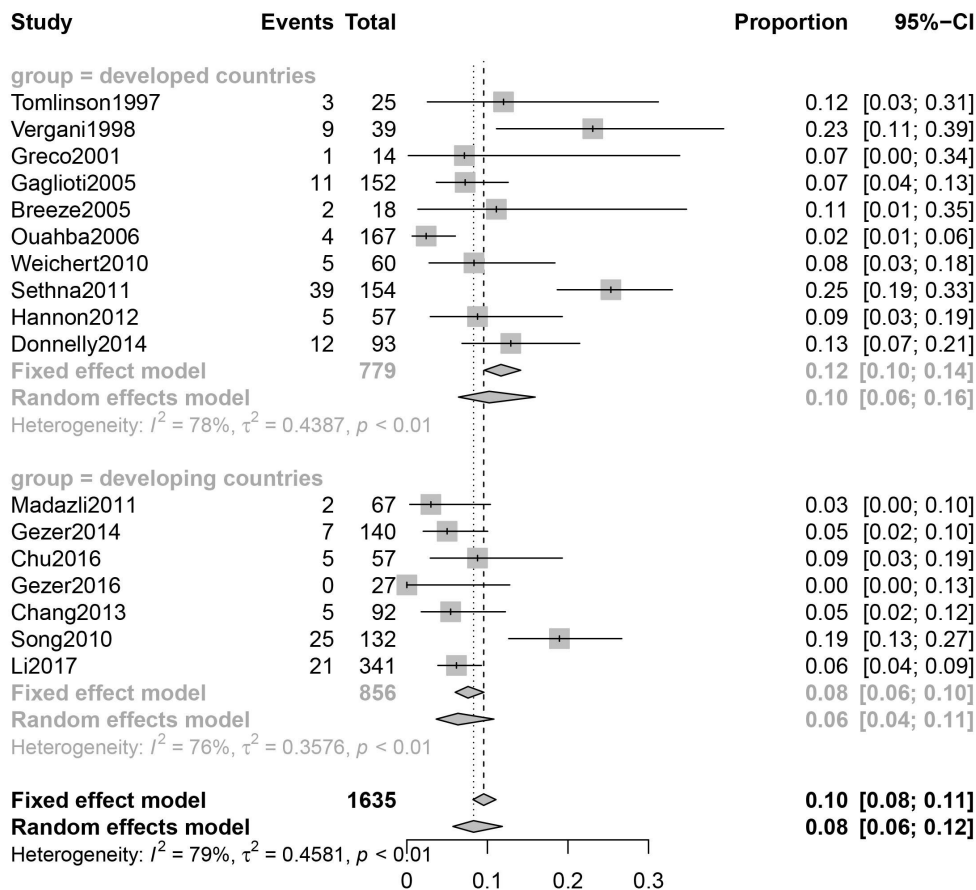
non-isolated VM. CI: Confidence interval; VM: Ventriculomegaly.



**Supplementary Figure 5: Incidence of chromosomal abnormalities in isolated mild VM. CI: Confidence interval; VM: Ventriculomegaly.**

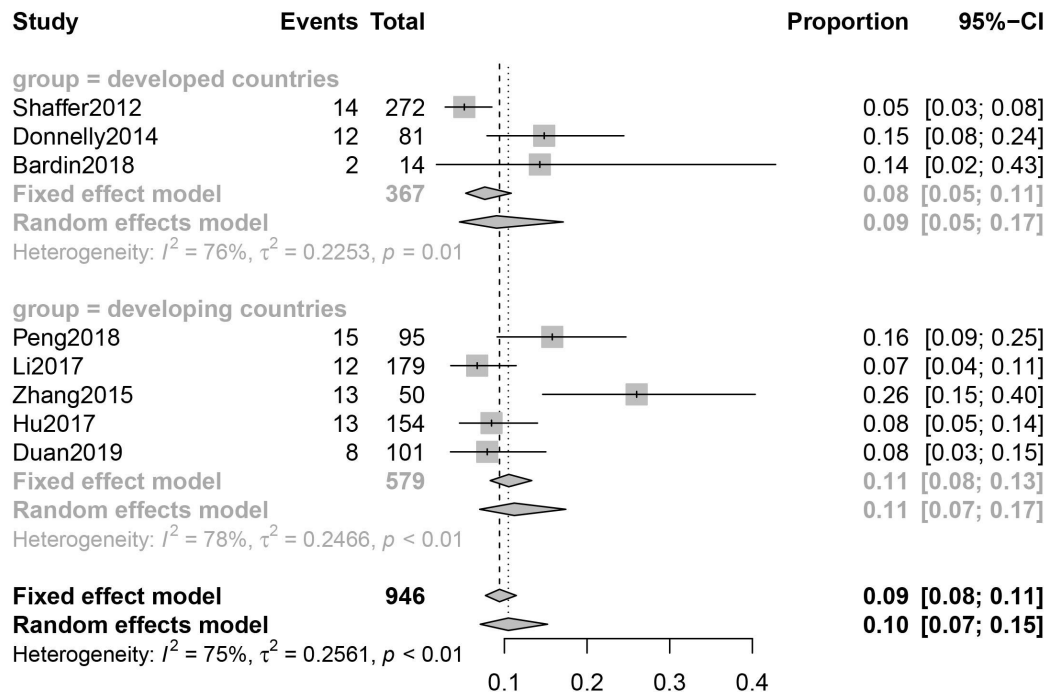


**Supplementary Figure 6: Subgroup analysis of Karyotyping with different publication year. CI: Confidence interval.**



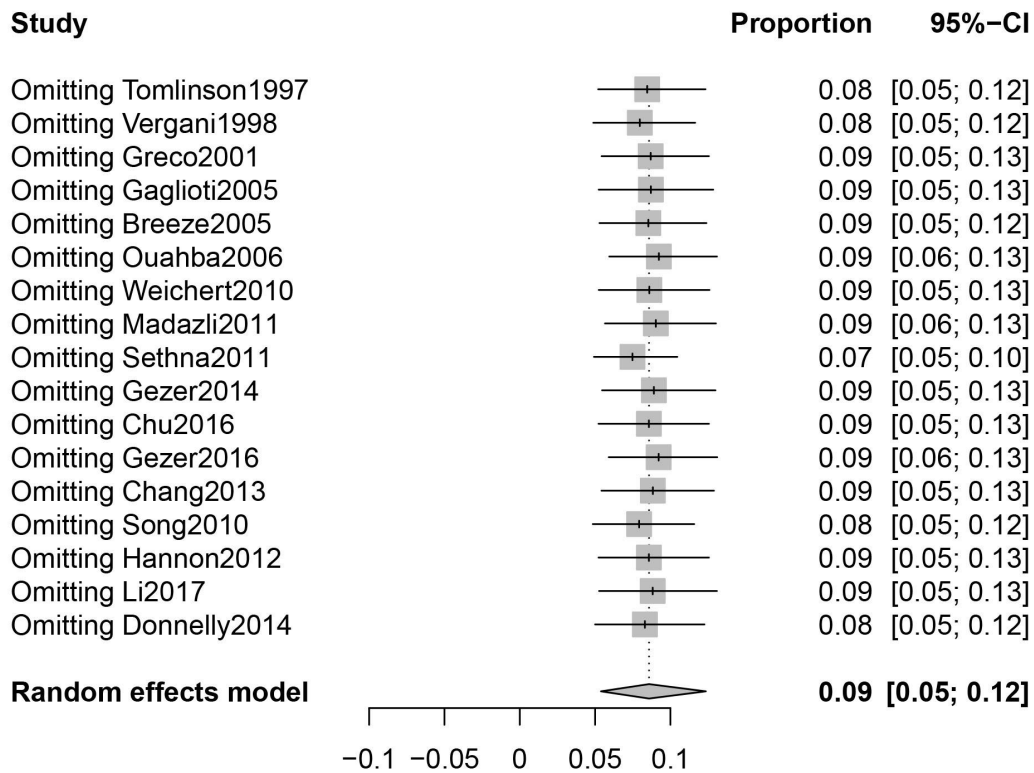
**Supplementary Figure 7:** Subgroup analysis of Karyotyping with different countries.

CI: Confidence interval.



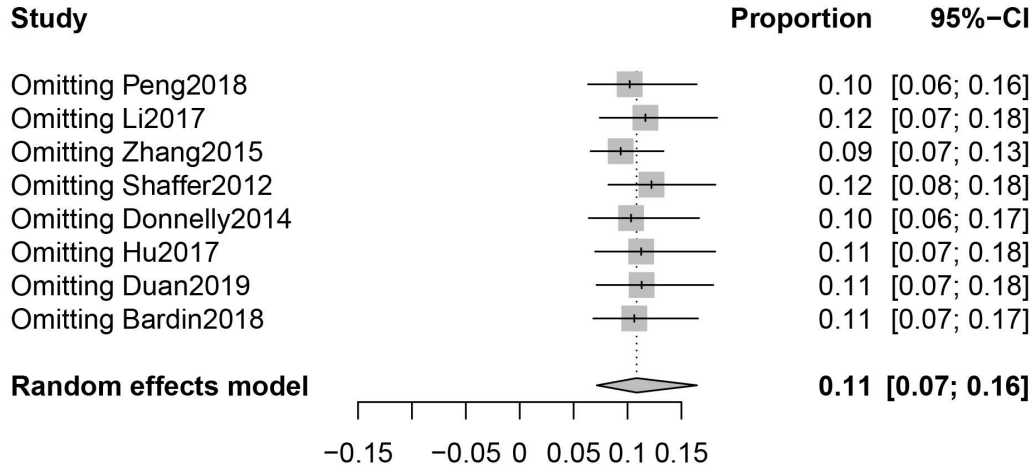
**Supplementary Figure 8:** Subgroup analysis of CMA. CI: Confidence interval;

CMA: Chromosomal microarray analysis.



**Supplementary Figure 9:**Sensitivity analysis of Karyotypin

CI: Confidence interval.



**Supplementary Figure 10:** Sensitivity analysis of CMA. CI: Confidence interval;

CMA: Chromosomal microarray analysis.