

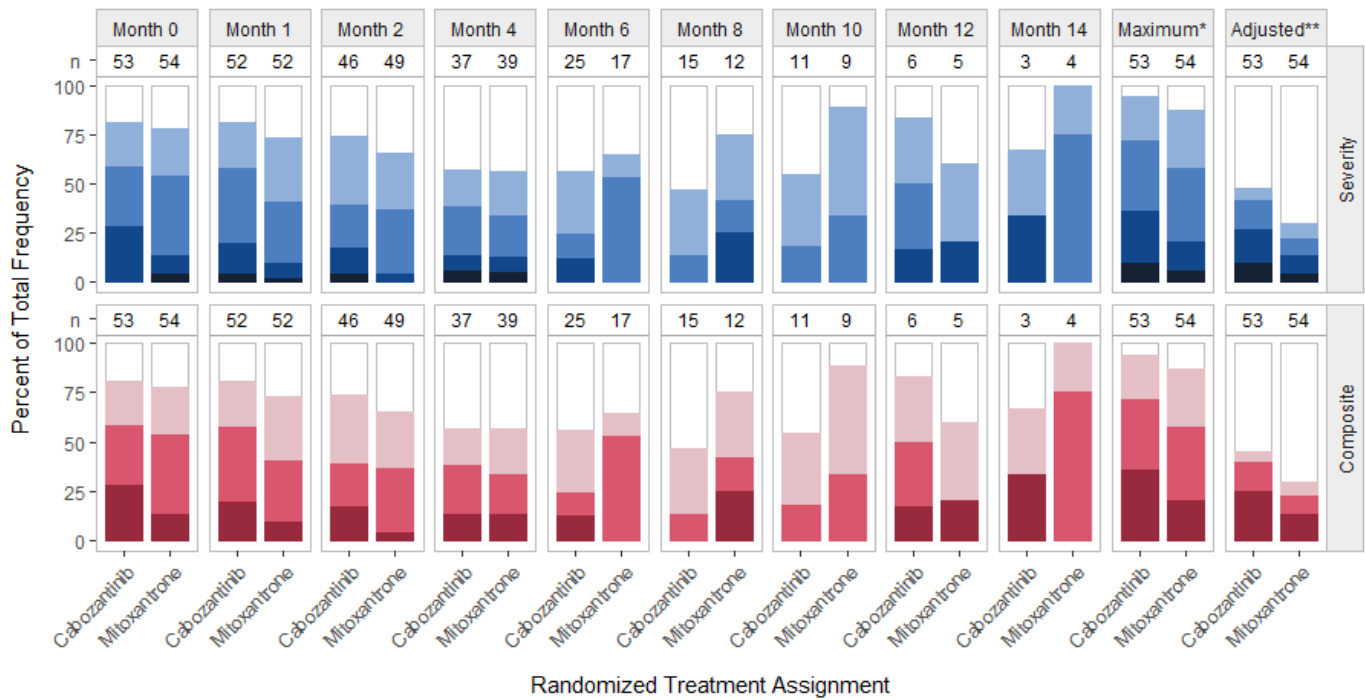
Supplemental Material for:

Evaluation of treatment tolerability utilizing a toxicity summary measure with Patient-Reported Outcomes version of the Common Terminology Criteria for Adverse Events (PRO-CTCAE) data

Blake T. Langlais, et al.

- Supplemental Figures 1. PRO-CTCAE Constipation Item Group and Density Histograms, by Arm
- Supplemental Figures 2. PRO-CTCAE Decreased Appetite Item Group and Density Histograms, by Arm
- Supplemental Figures 3. PRO-CTCAE Diarrhea Item Group and Density Histograms, by Arm
- Supplemental Figures 4. PRO-CTCAE Fatigue Item Group and Density Histograms, by Arm
- Supplemental Figures 5. PRO-CTCAE Insomnia Item Group and Density Histograms, by Arm
- Supplemental Figures 6. PRO-CTCAE Nausea Item Group and Density Histograms, by Arm
- Supplemental Figures 7. PRO-CTCAE Numbness/Tingling in Hands/Feet Item Group and Density Histograms, by Arm
- Supplemental Figures 8. PRO-CTCAE Pain Item Group and Density Histograms, by Arm
- Supplemental Figures 9. PRO-CTCAE Shortness of Breath Item Group and Density Histograms, by Arm
- Supplemental Figures 10. PRO-CTCAE Vomiting Item Group and Density Histograms, by Arm
- Supplemental Figures 11. Density Histograms for all PROCTCAE Items and Composites, by Arm

Supplemental Figure 1. PRO-CTCAE Constipation Item Group



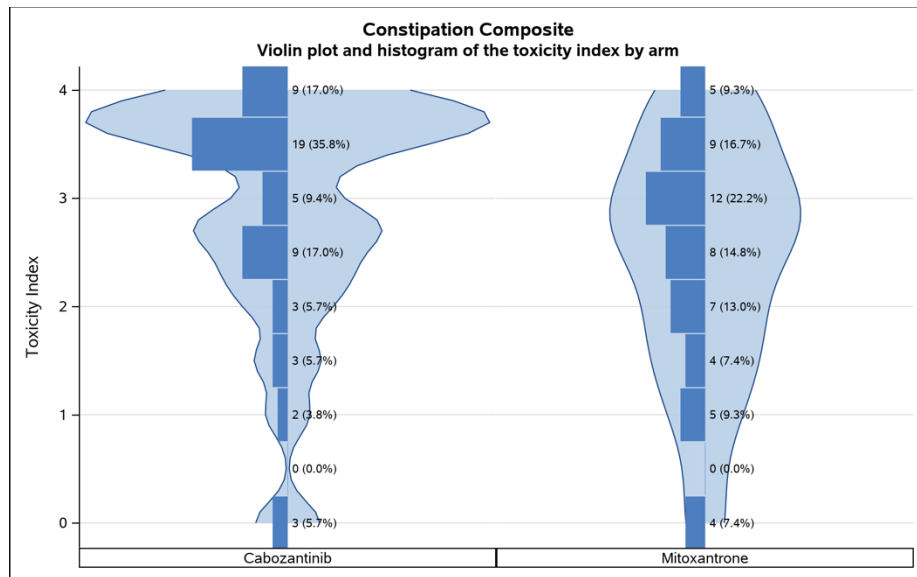
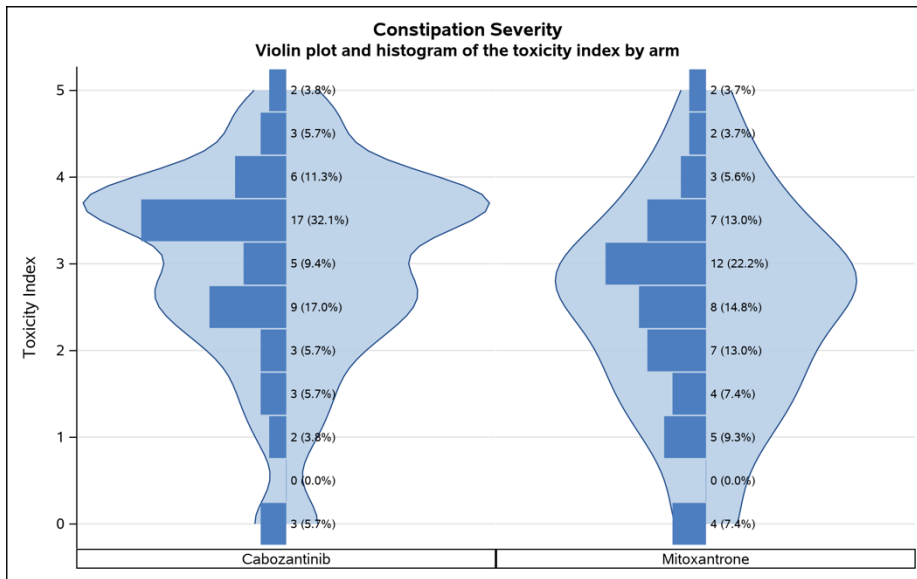
Severity: □ None / ■ Mild / ■ Moderate / ■ Severe / ■ Very severe

Composite Grade: □ 0 / ■ 1 / ■ 2 / ■ 3

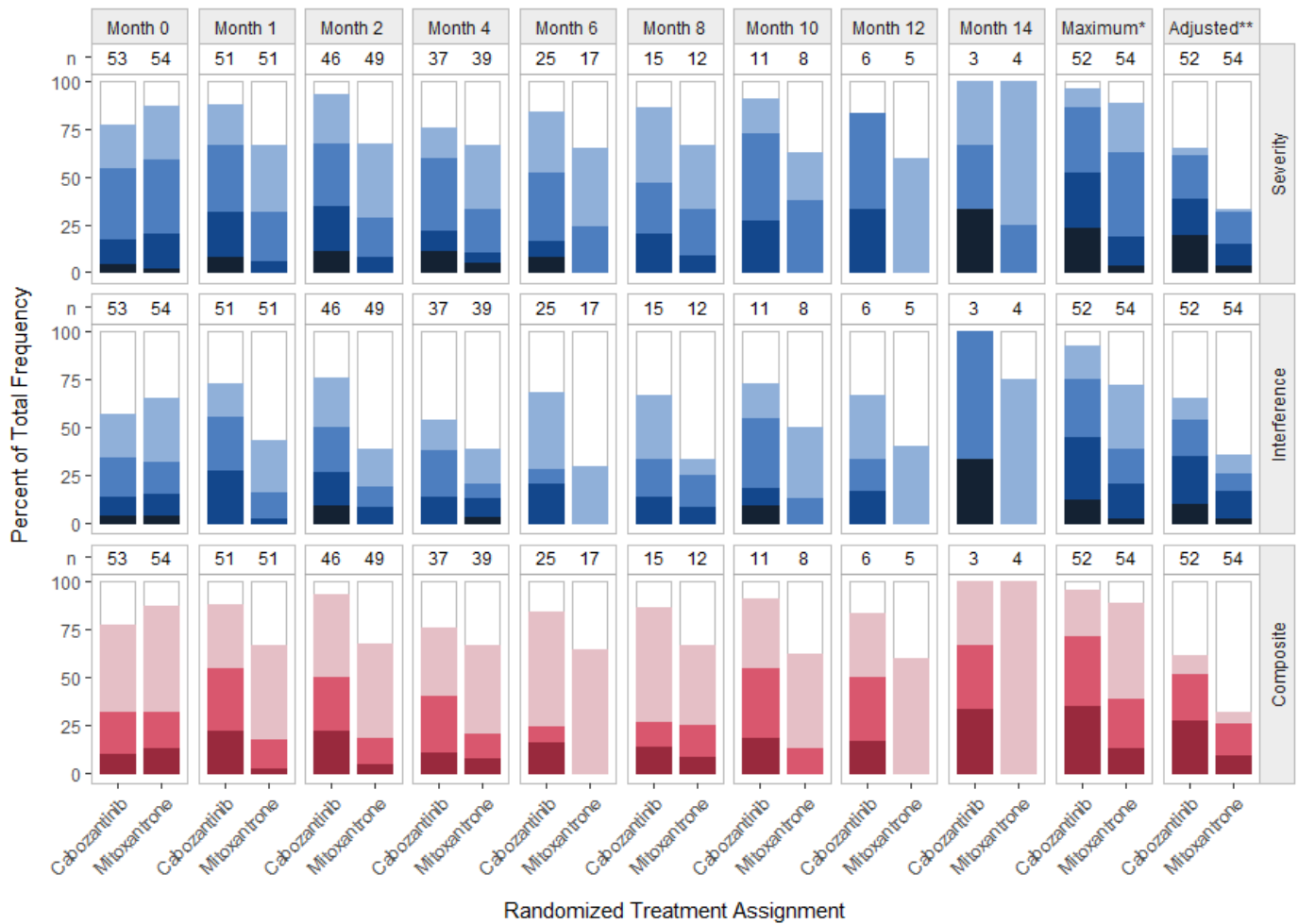
Column labels (n) show the number of subjects with an observed symptom score or grade.

*Maximum score or grade reported post-baseline per patient.

**Maximum score or grade reported post-baseline per patient when including only scores that were worse than the patient's baseline score.



Supplemental Figure 2. PRO-CTCAE Decreased Appetite Item Group



Severity: □ None / □ Mild / □ Moderate / □ Severe / □ Very severe

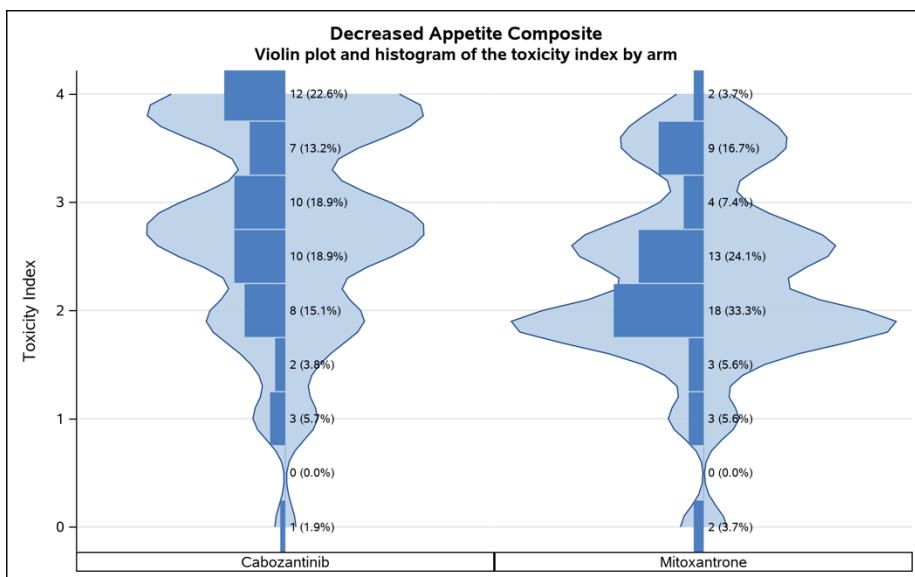
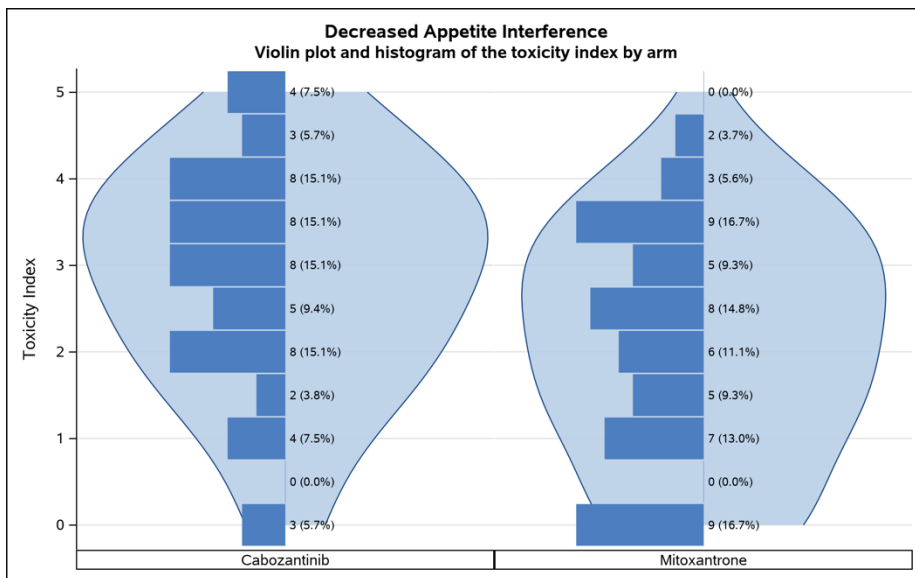
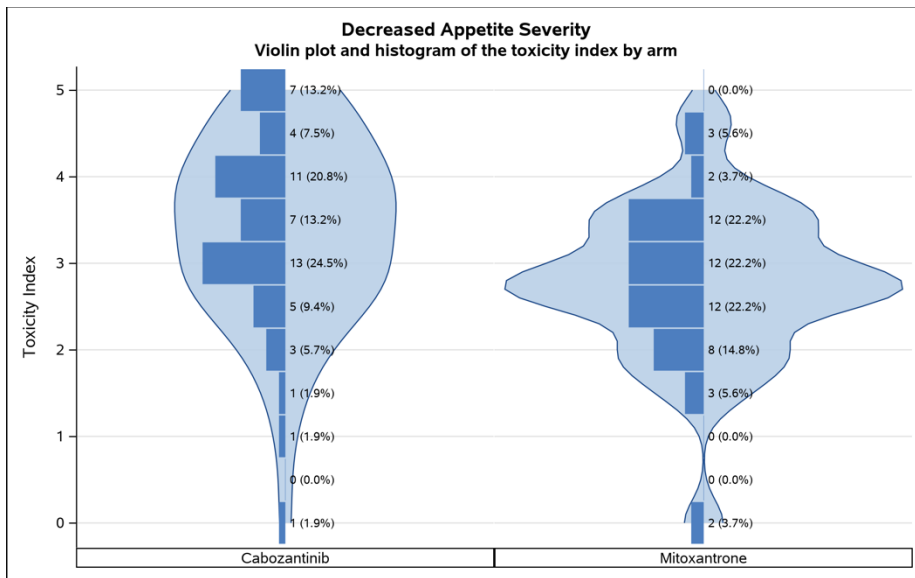
Interference: □ Not at all / □ A little bit / □ Somewhat / □ Quite a bit / □ Very much

Composite Grade: □ 0 / □ 1 / □ 2 / □ 3

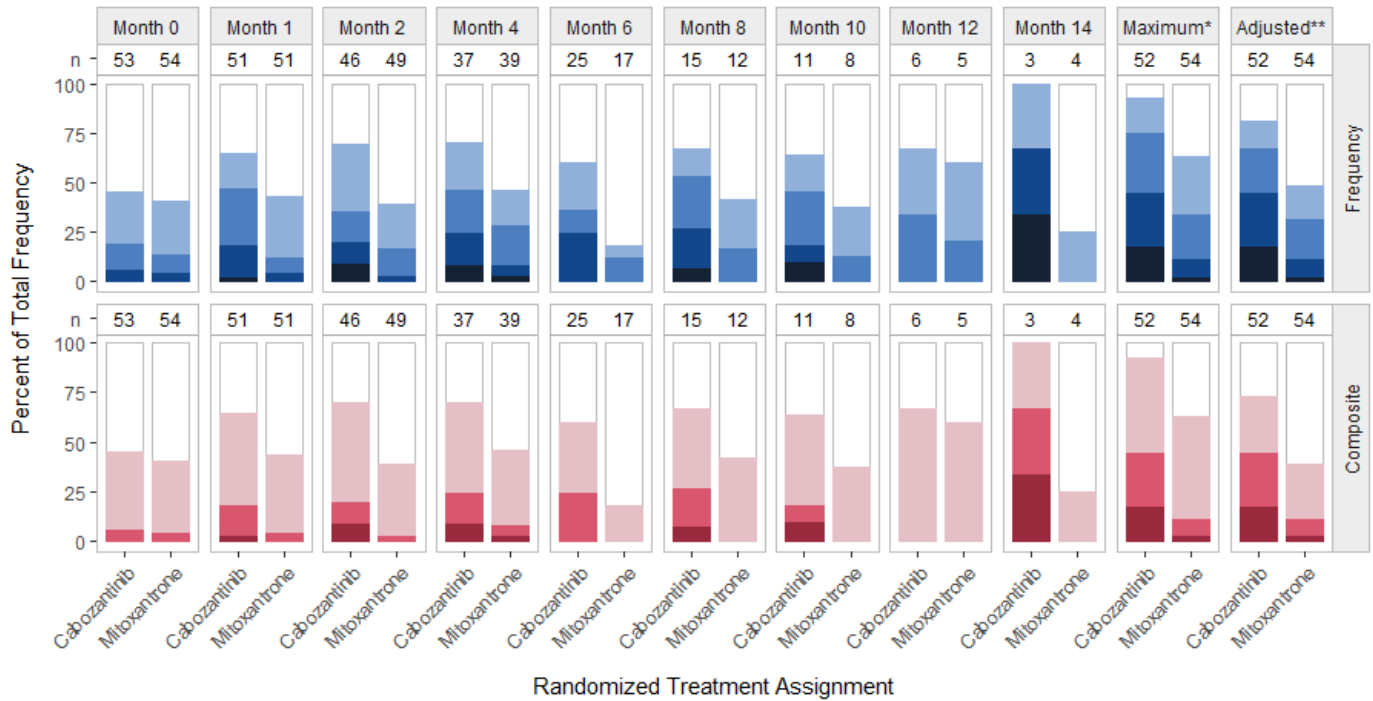
Column labels (n) show the number of subjects with an observed symptom score or grade.

*Maximum score or grade reported post-baseline per patient.

**Maximum score or grade reported post-baseline per patient when including only scores that were worse than the patient's baseline score.



Supplemental Figure 3. PRO-CTCAE Diarrhea Item Group



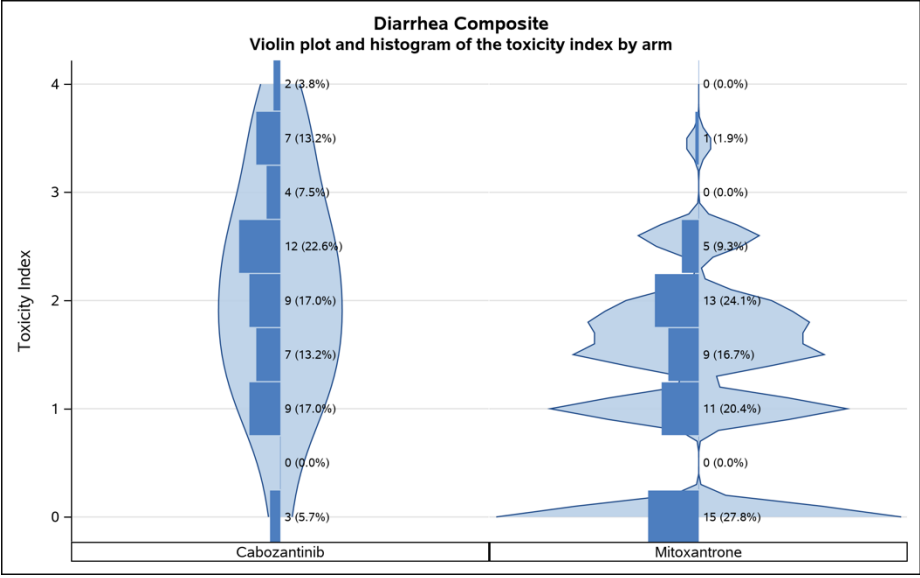
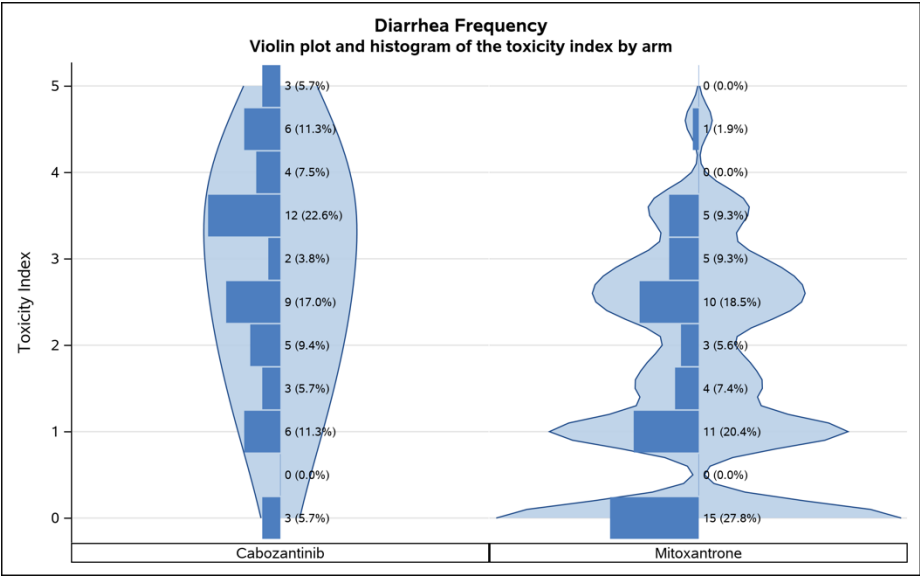
Frequency: □ Never / □ Rarely / □ Occasionally / □ Frequently / □ Almost constantly

Composite Grade: □ 0 / □ 1 / □ 2 / □ 3

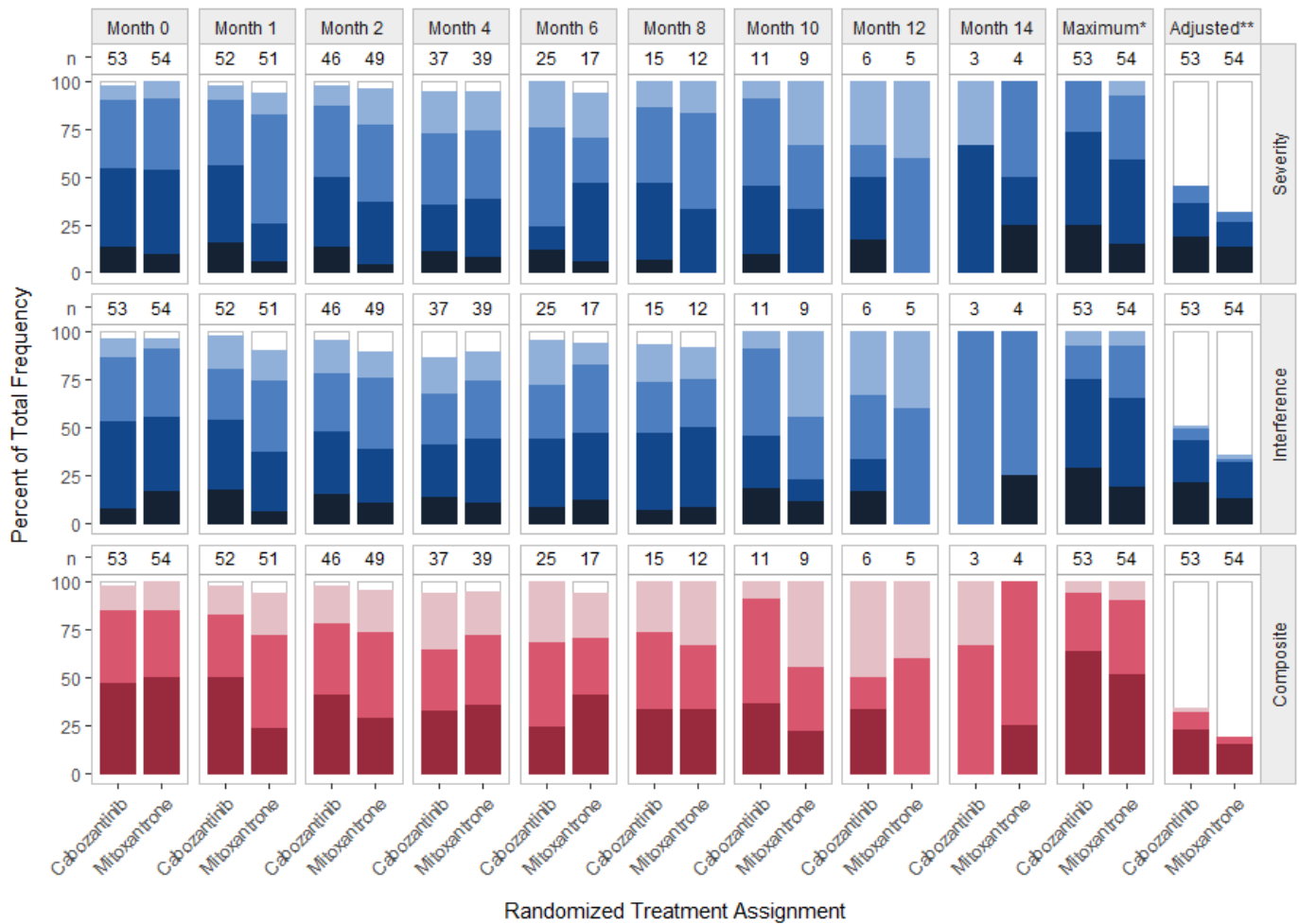
Column labels (n) show the number of subjects with an observed symptom score or grade.

*Maximum score or grade reported post-baseline per patient.

**Maximum score or grade reported post-baseline per patient when including only scores that were worse than the patient's baseline score.



Supplemental Figure 4. PRO-CTCAE Fatigue Item Group



Severity: □ None / ■ Mild / ■ Moderate / ■ Severe / ■ Very severe

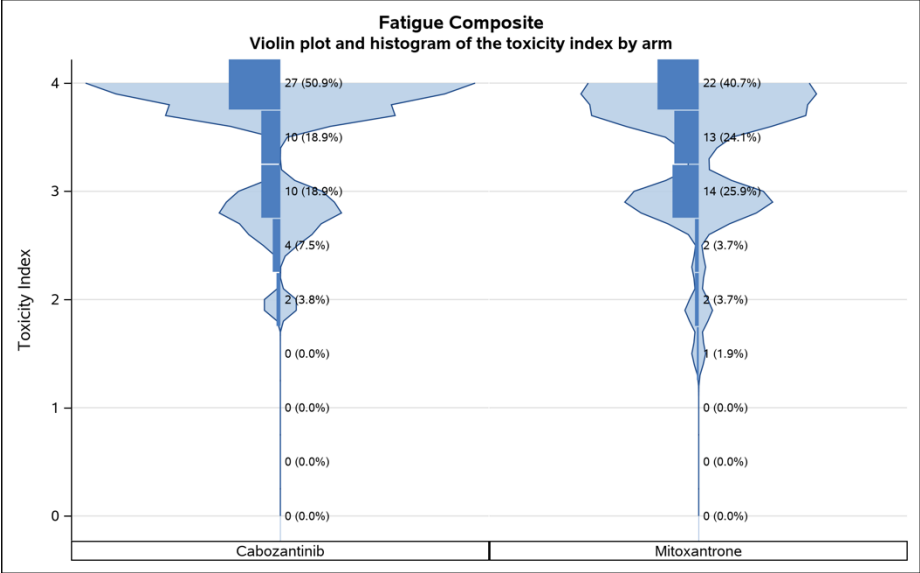
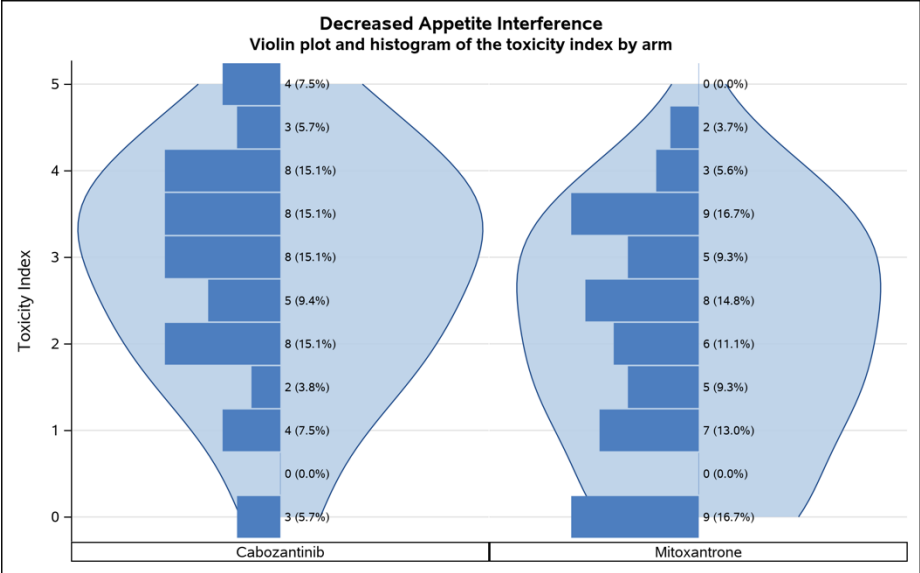
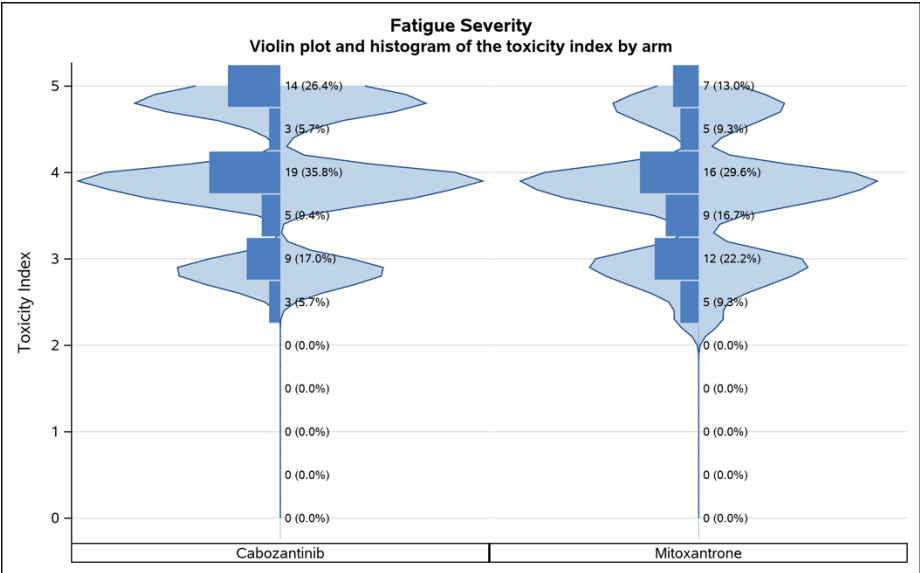
Interference: □ Not at all / ■ A little bit / ■ Somewhat / ■ Quite a bit / ■ Very much

Composite Grade: □ 0 / ■ 1 / ■ 2 / ■ 3

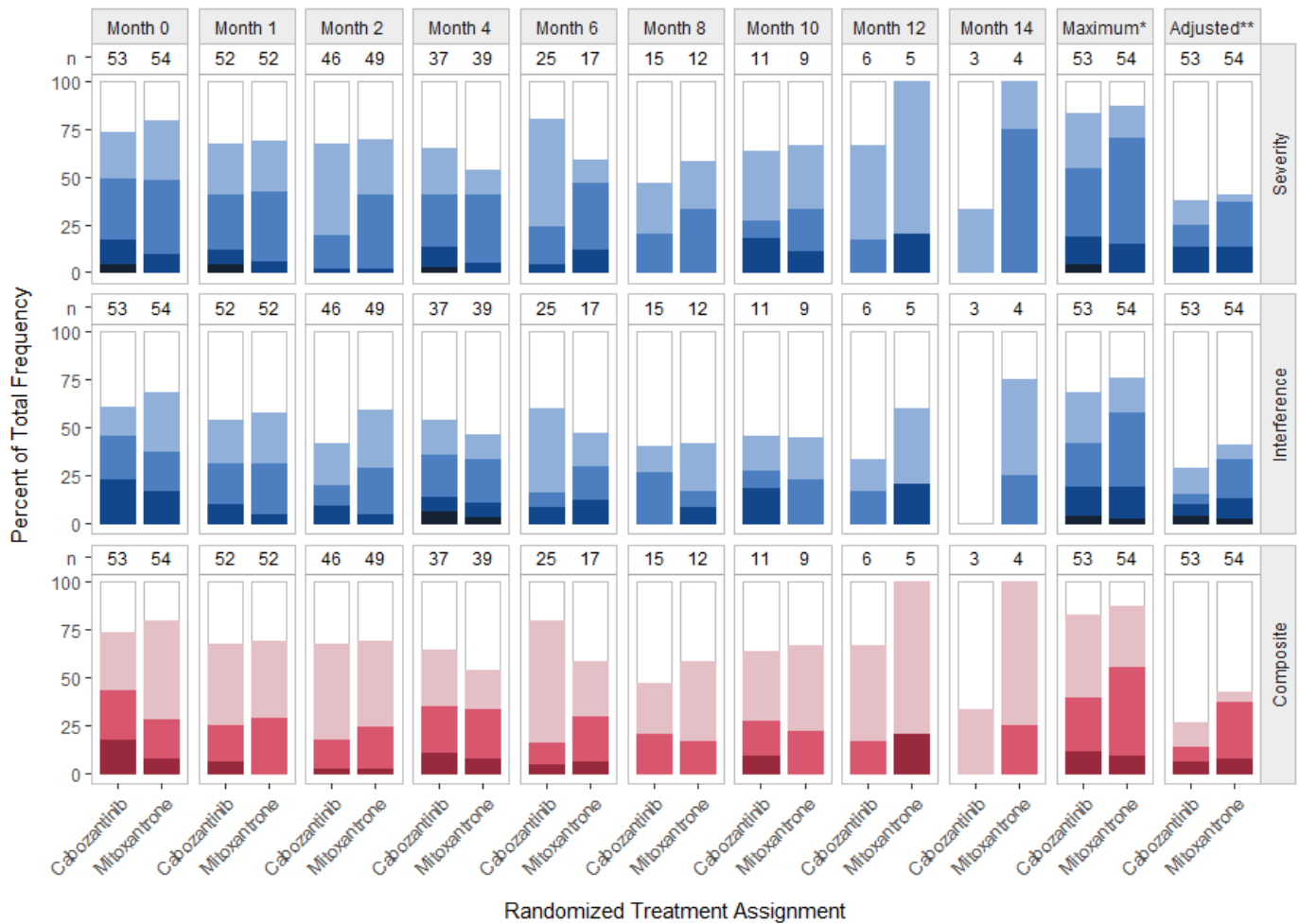
Column labels (n) show the number of subjects with an observed symptom score or grade.

*Maximum score or grade reported post-baseline per patient.

**Maximum score or grade reported post-baseline per patient when including only scores that were worse than the patient's baseline score.



Supplemental Figure 5. PRO-CTCAE Insomnia Item Group



Severity: □ None / ■ Mild / ■ Moderate / ■ Severe / ■ Very severe

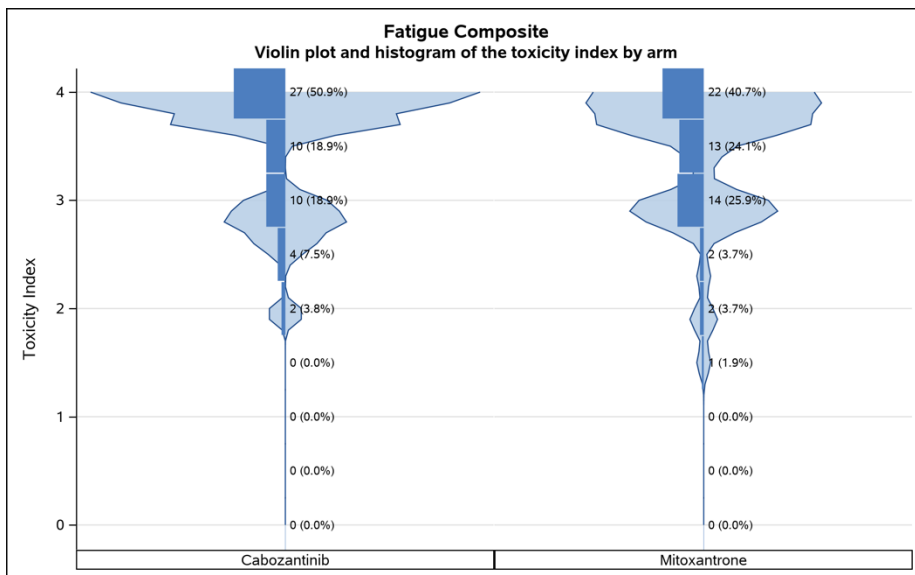
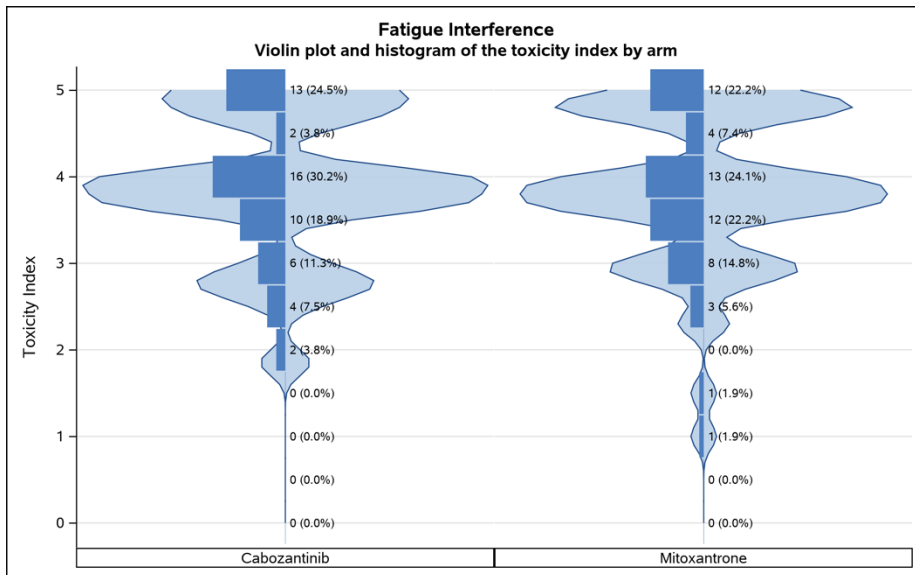
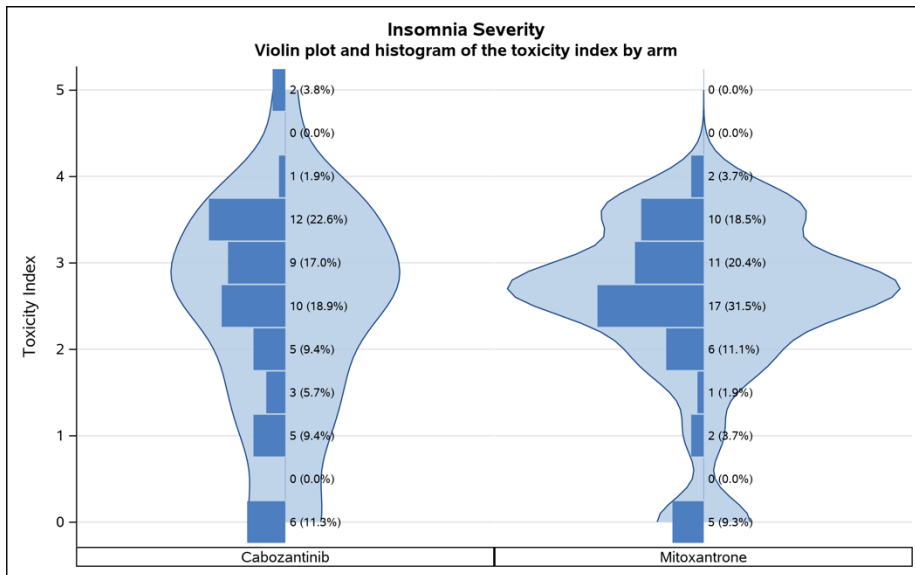
Interference: □ Not at all / ■ A little bit / ■ Somewhat / ■ Quite a bit / ■ Very much

Composite Grade: □ 0 / ■ 1 / ■ 2 / ■ 3

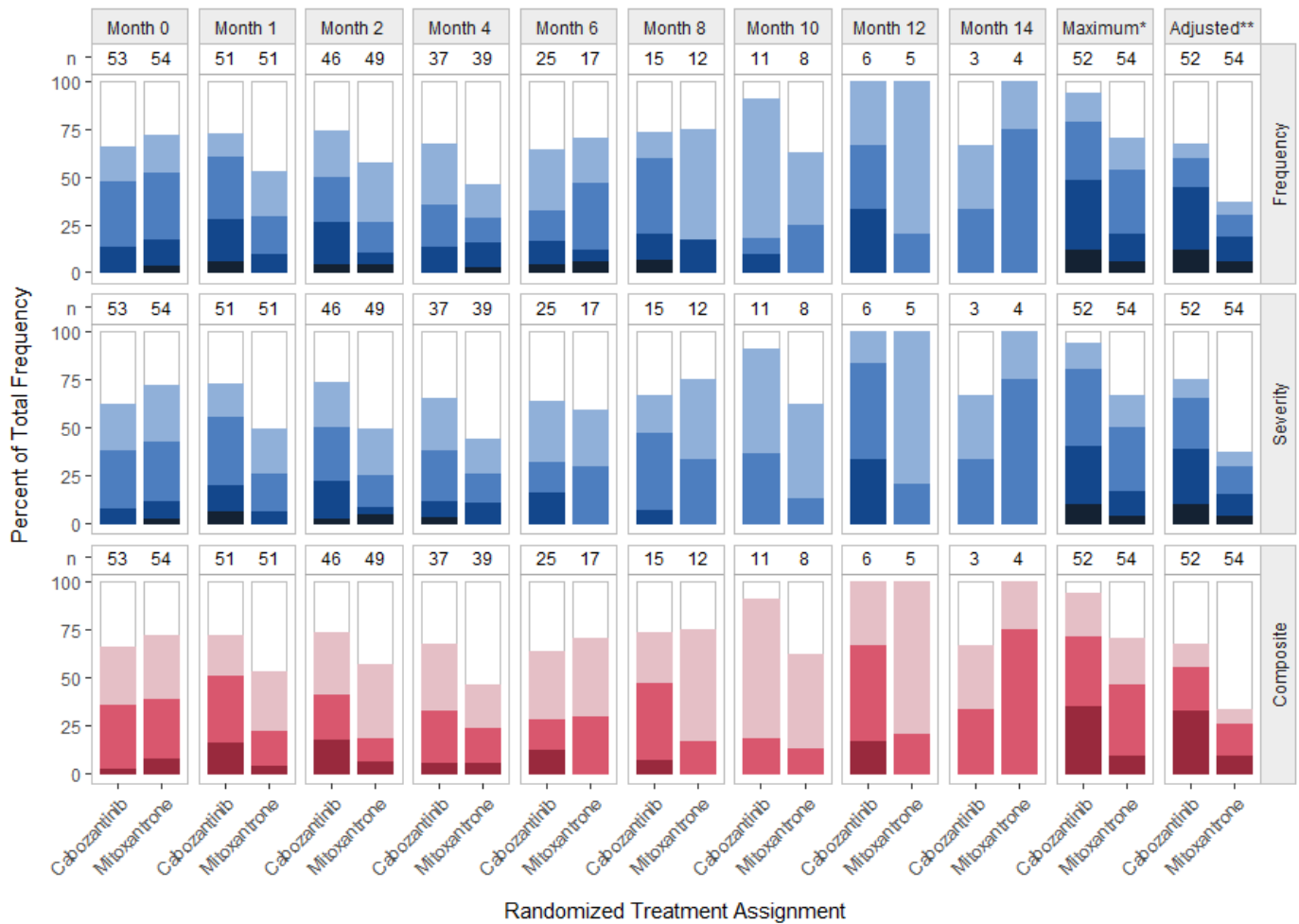
Column labels (n) show the number of subjects with an observed symptom score or grade.

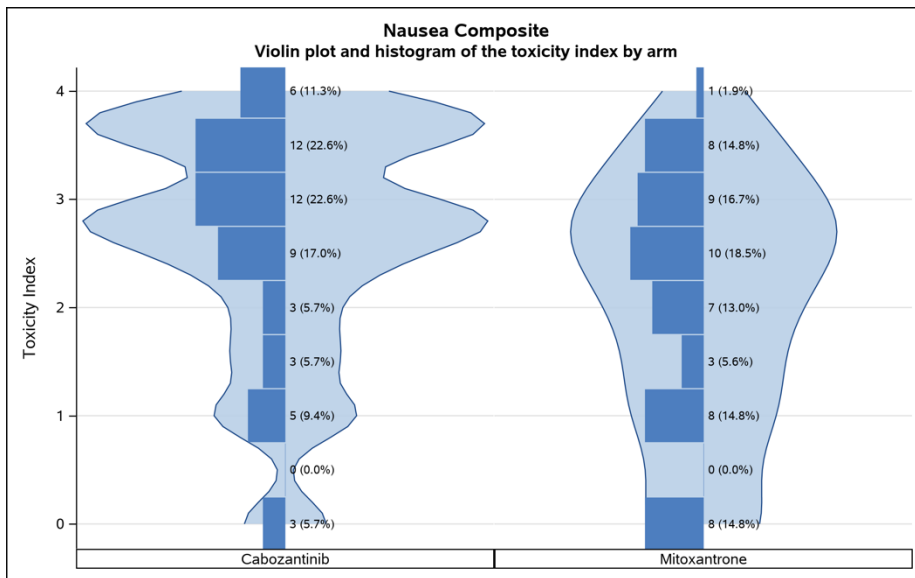
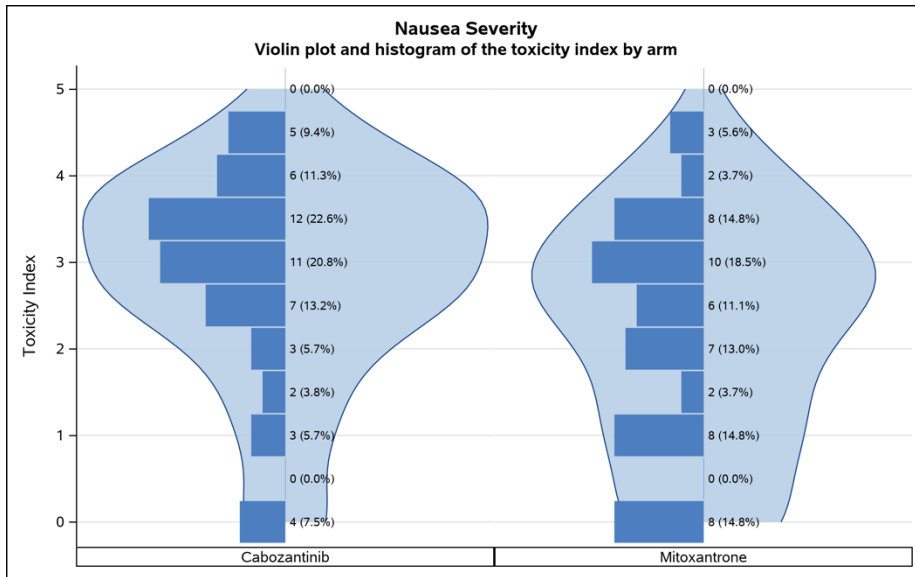
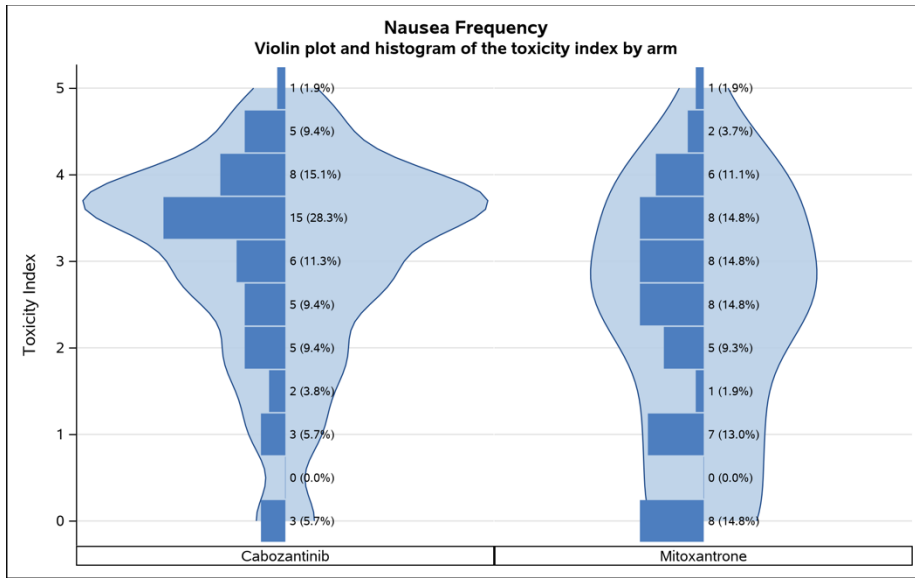
*Maximum score or grade reported post-baseline per patient.

**Maximum score or grade reported post-baseline per patient when including only scores that were worse than the patient's baseline score.

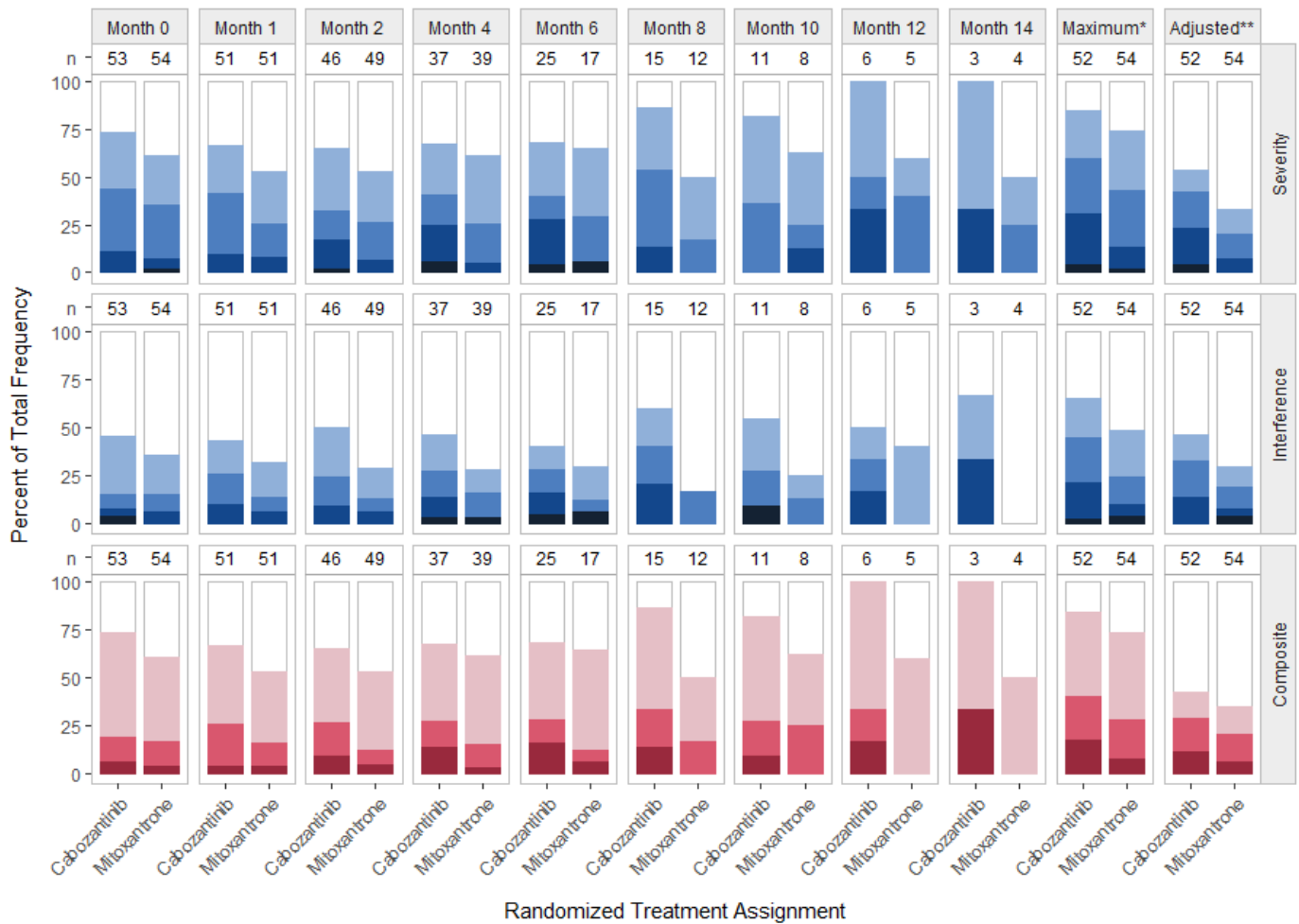


Supplemental Figure 6. PRO-CTCAE Nausea Item Group





Supplemental Figure 7. PRO-CTCAE Numbness/Tingling in Hands/Feet Item Group



Severity: □ None / ■ Mild / ■ Moderate / ■ Severe / ■ Very severe

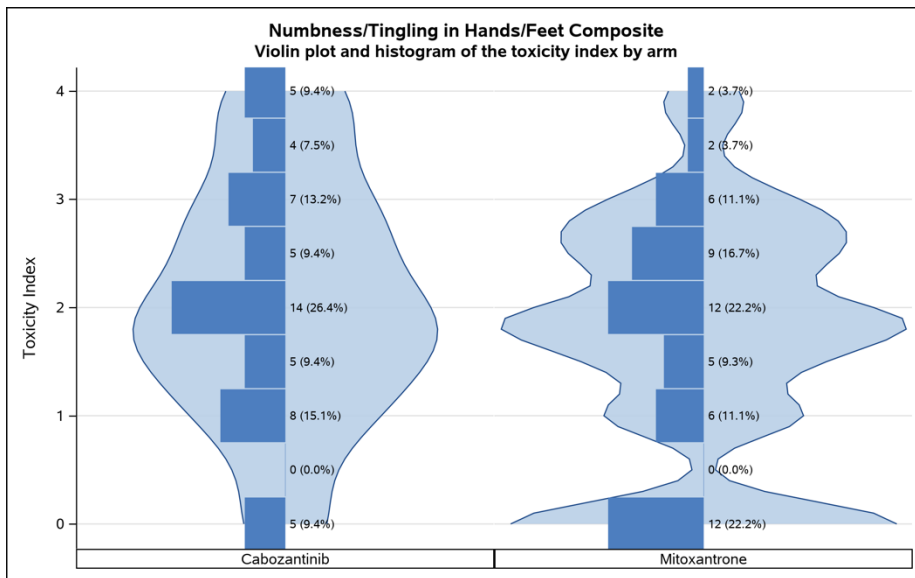
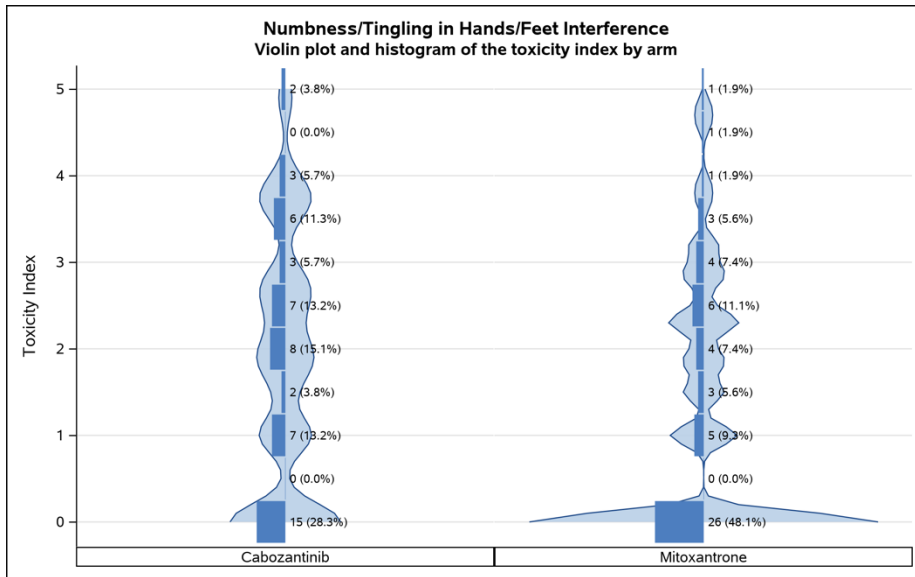
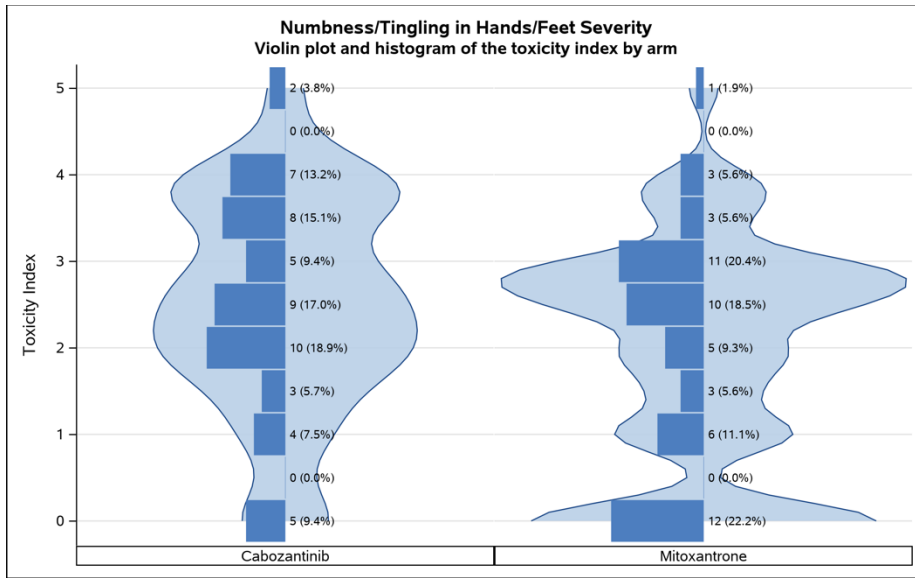
Interference: □ Not at all / ■ A little bit / ■ Somewhat / ■ Quite a bit / ■ Very much

Composite Grade: □ 0 / ■ 1 / ■ 2 / ■ 3

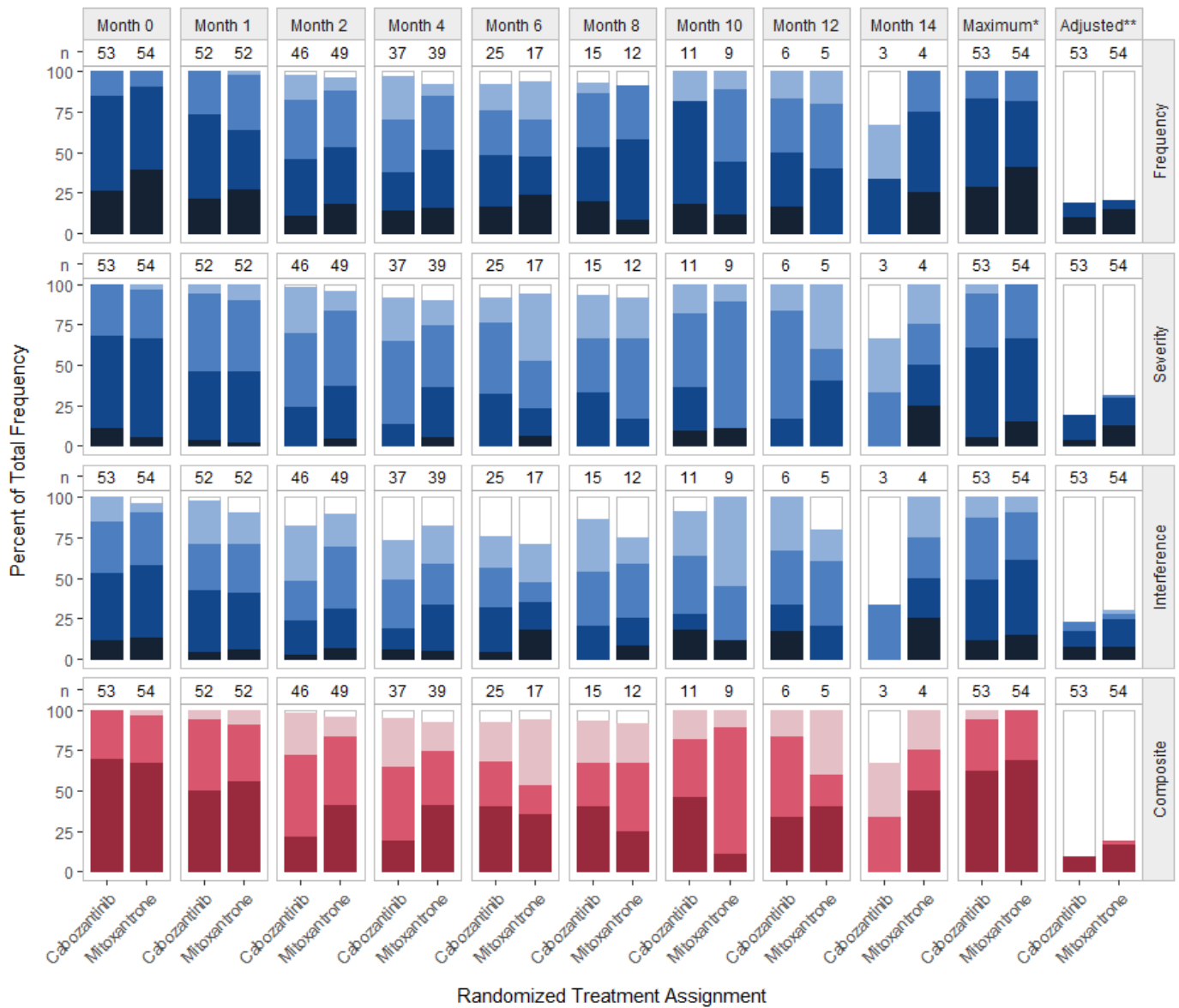
Column labels (n) show the number of subjects with an observed symptom score or grade.

*Maximum score or grade reported post-baseline per patient.

**Maximum score or grade reported post-baseline per patient when including only scores that were worse than the patient's baseline score.



Supplemental Figure 8. PRO-CTCAE Pain Item Group



Frequency: □ Never / □ Rarely / □ Occasionally / □ Frequently / □ Almost constantly

Severity: □ None / □ Mild / □ Moderate / □ Severe / □ Very severe

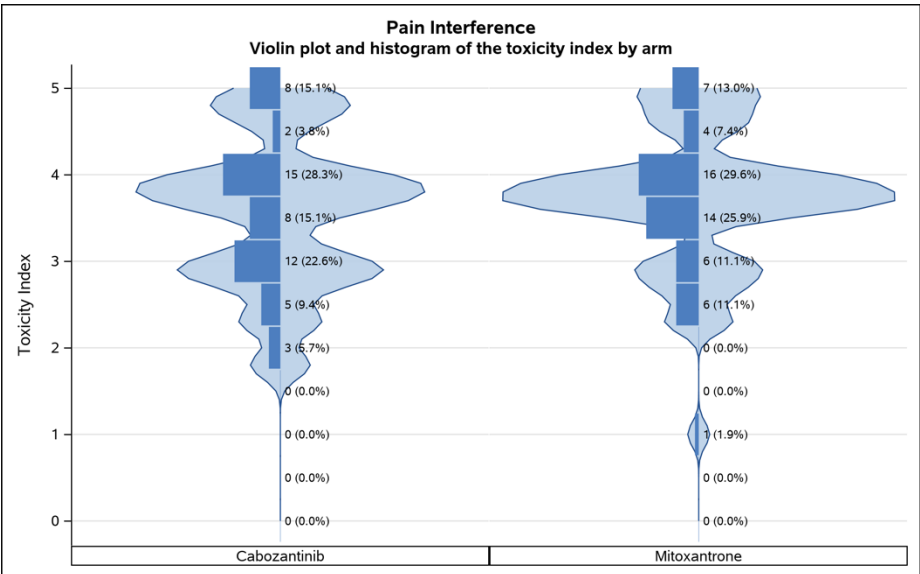
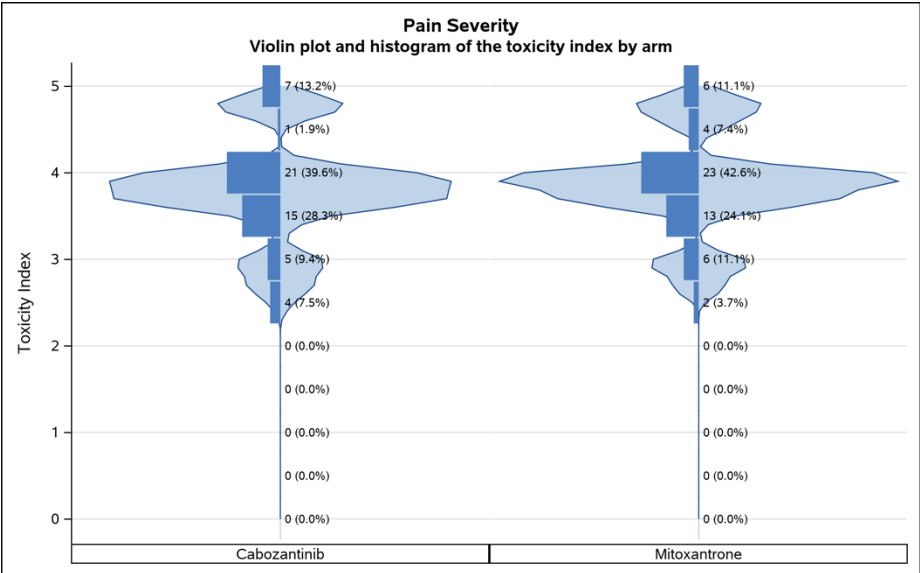
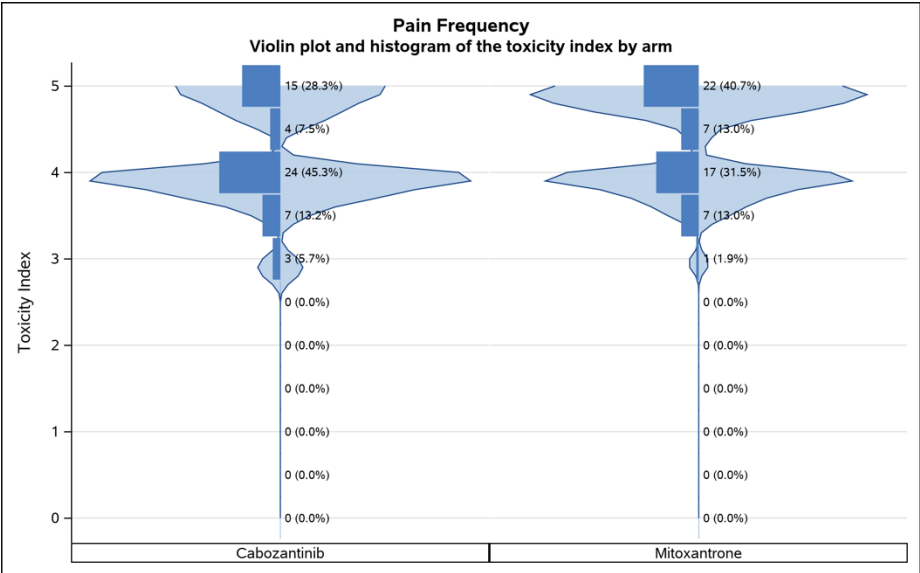
Interference: □ Not at all / □ A little bit / □ Somewhat / □ Quite a bit / □ Very much

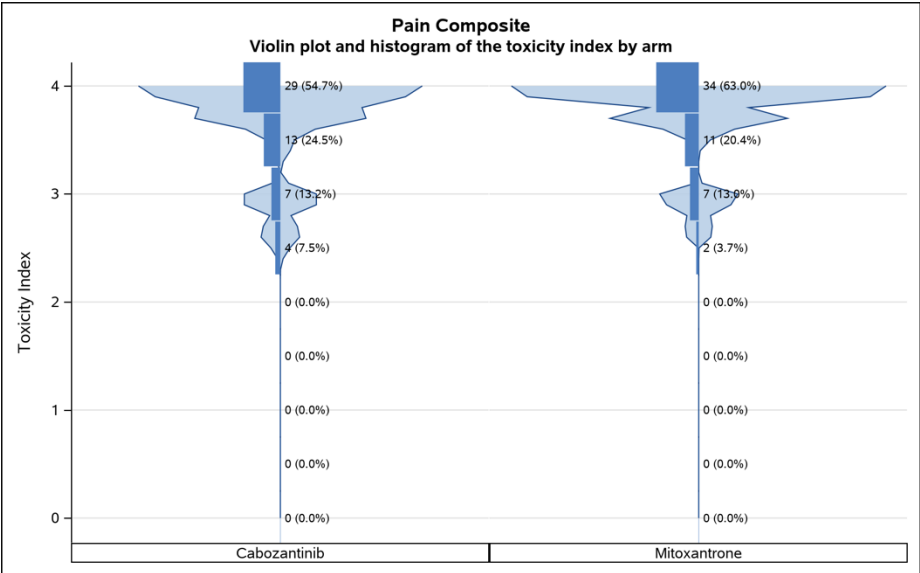
Composite Grade: □ 0 / □ 1 / □ 2 / □ 3

Column labels (n) show the number of subjects with an observed symptom score or grade.

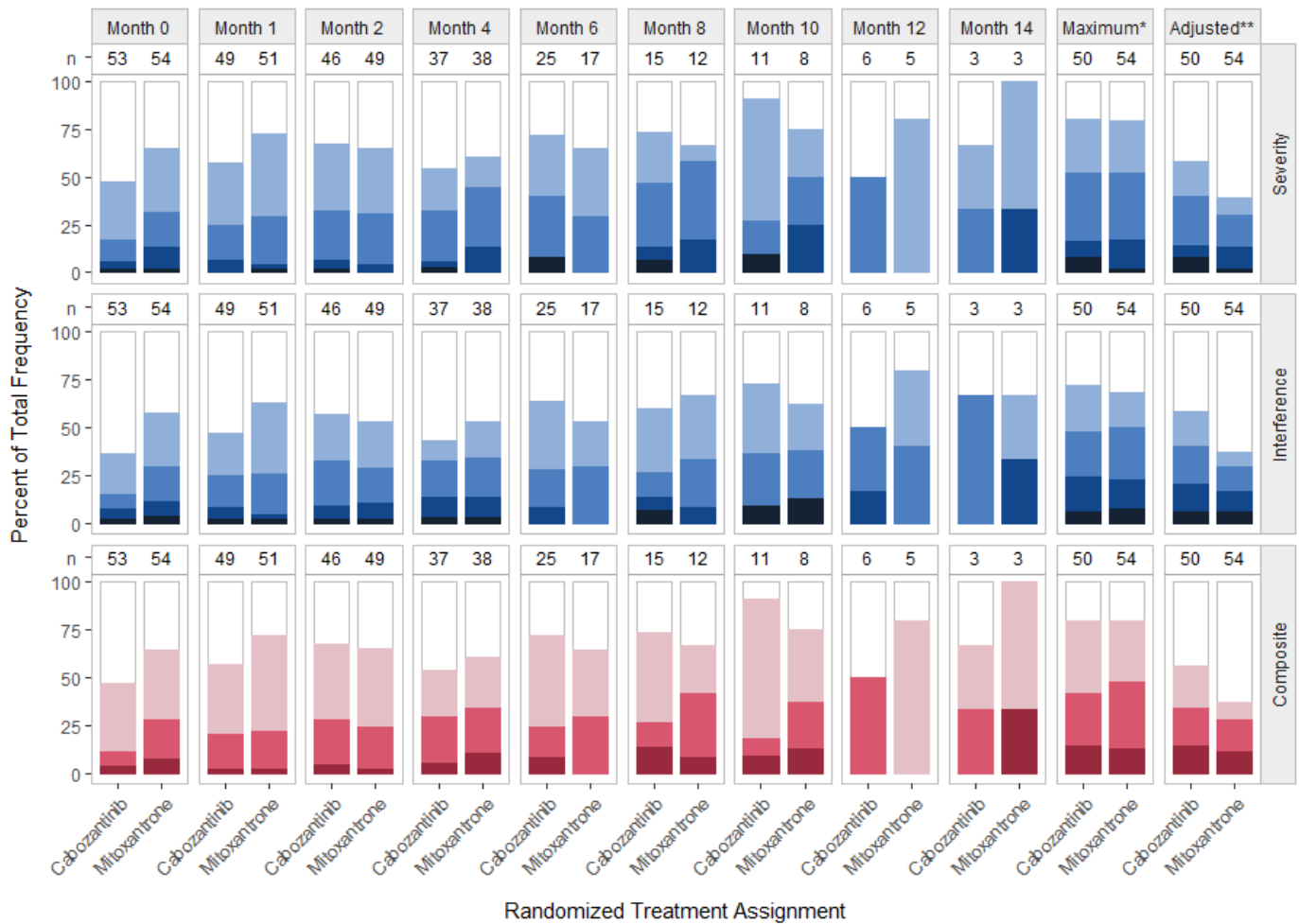
*Maximum score or grade reported post-baseline per patient.

**Maximum score or grade reported post-baseline per patient when including only scores that were worse than the patient's baseline score.





Supplemental Figure 9. PRO-CTCAE Shortness of Breath Item Group



Severity: □ None / ■ Mild / ■ Moderate / ■ Severe / ■ Very severe

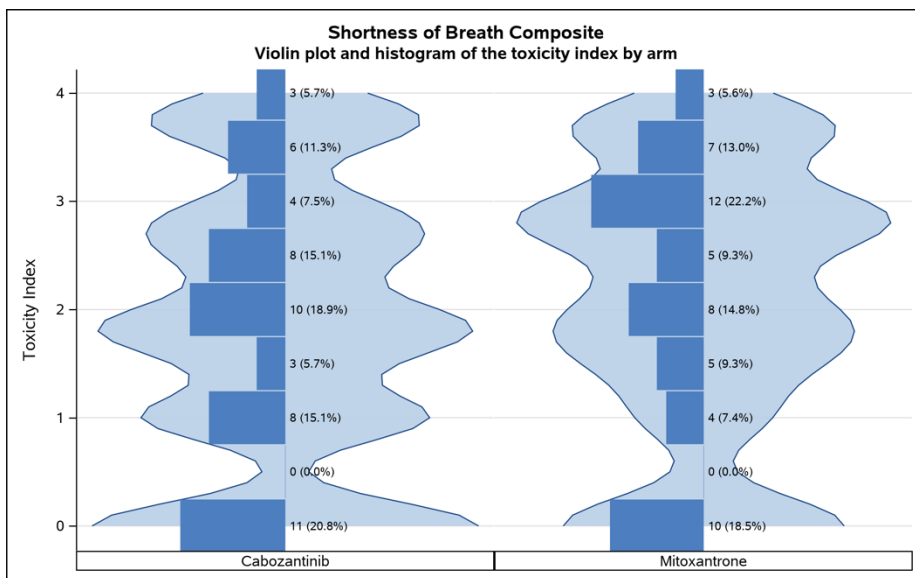
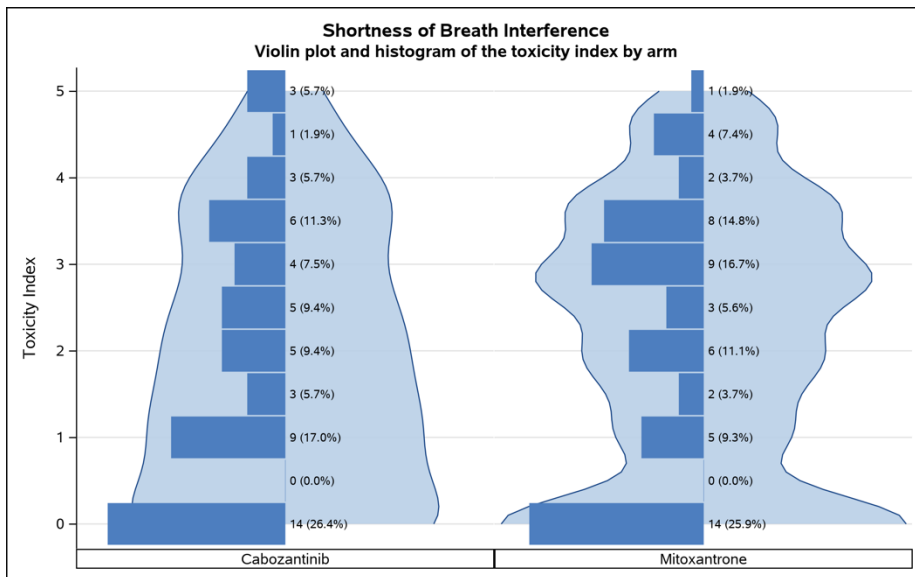
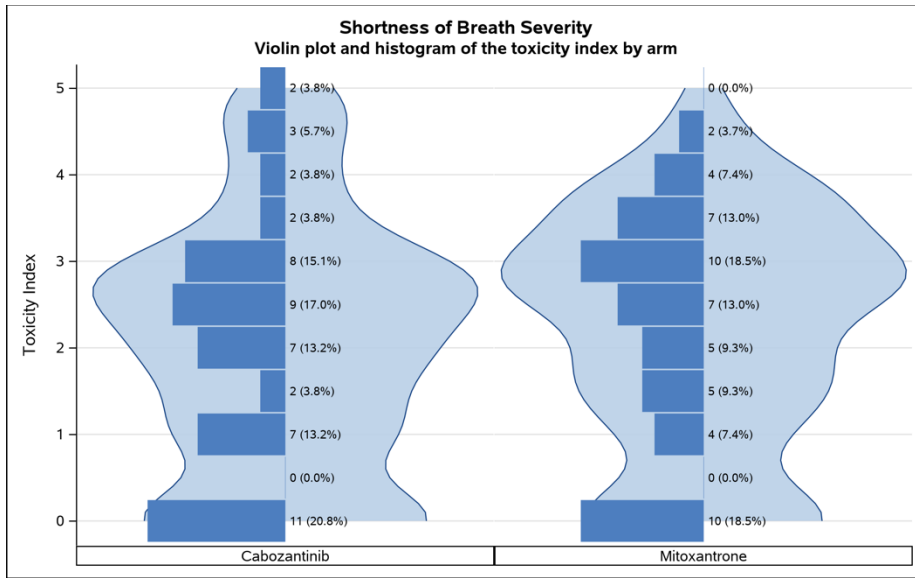
Interference: □ Not at all / ■ A little bit / ■ Somewhat / ■ Quite a bit / ■ Very much

Composite Grade: □ 0 / ■ 1 / ■ 2 / ■ 3

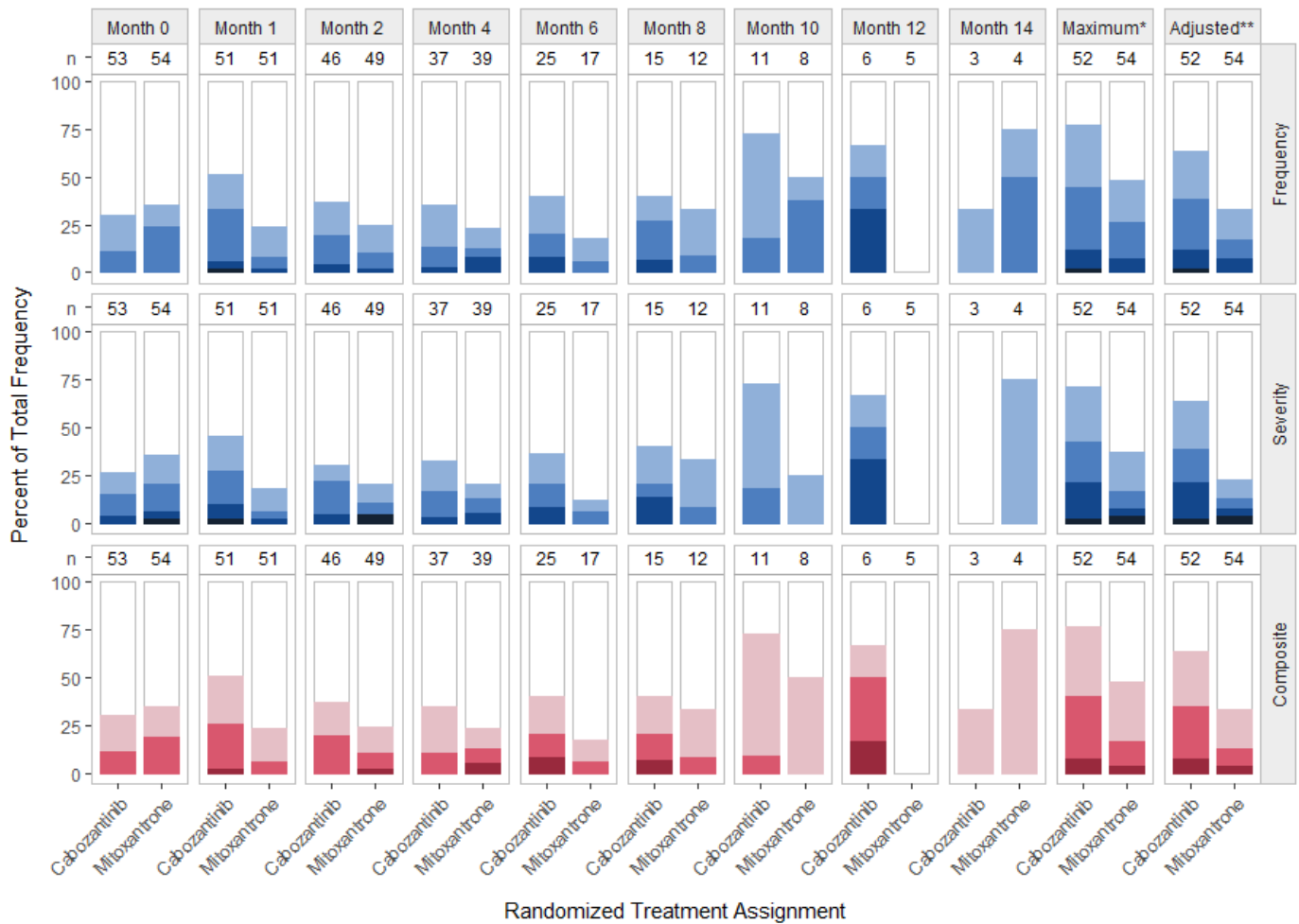
Column labels (n) show the number of subjects with an observed symptom score or grade.

*Maximum score or grade reported post-baseline per patient.

**Maximum score or grade reported post-baseline per patient when including only scores that were worse than the patient's baseline score.



Supplemental Figure 10. PRO-CTCAE Vomiting Item Group



Frequency: □ Never / ■ Rarely / ■ Occasionally / ■ Frequently / ■ Almost constantly

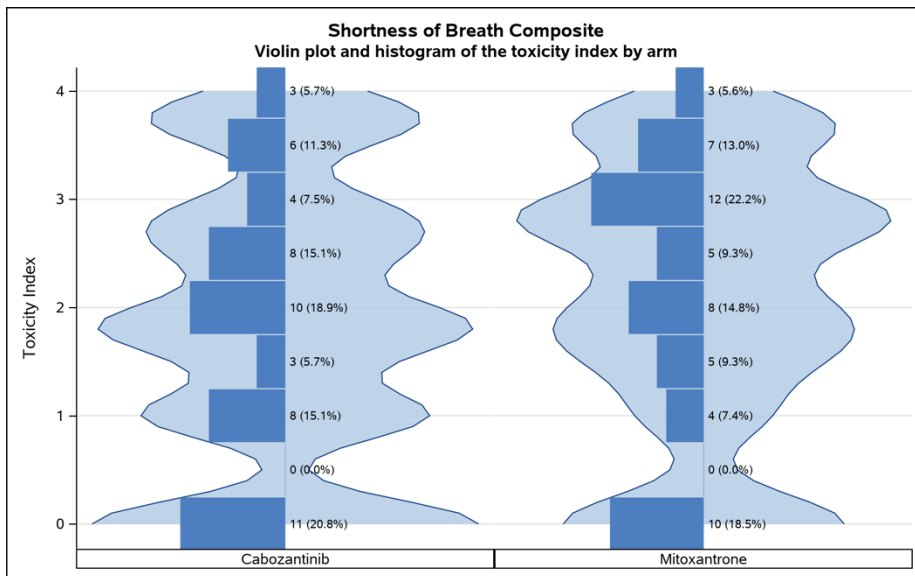
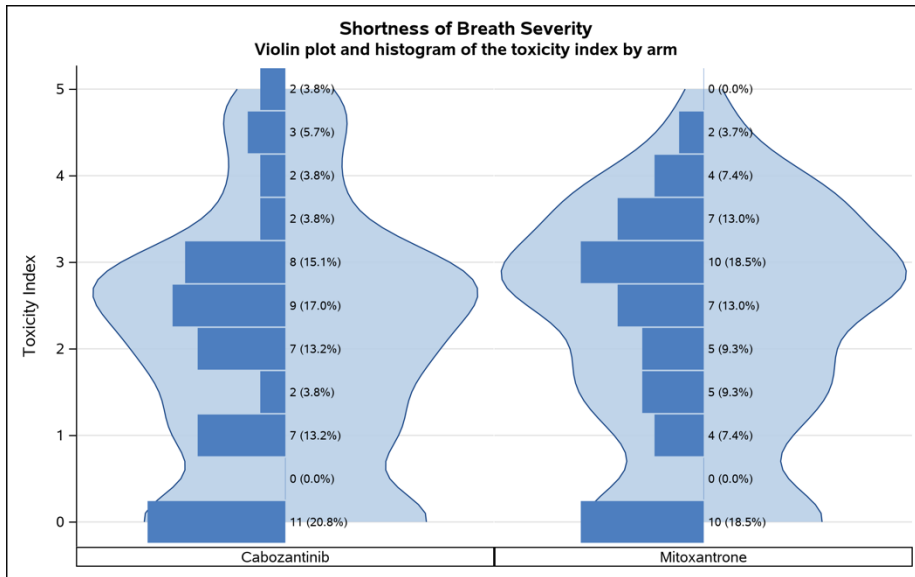
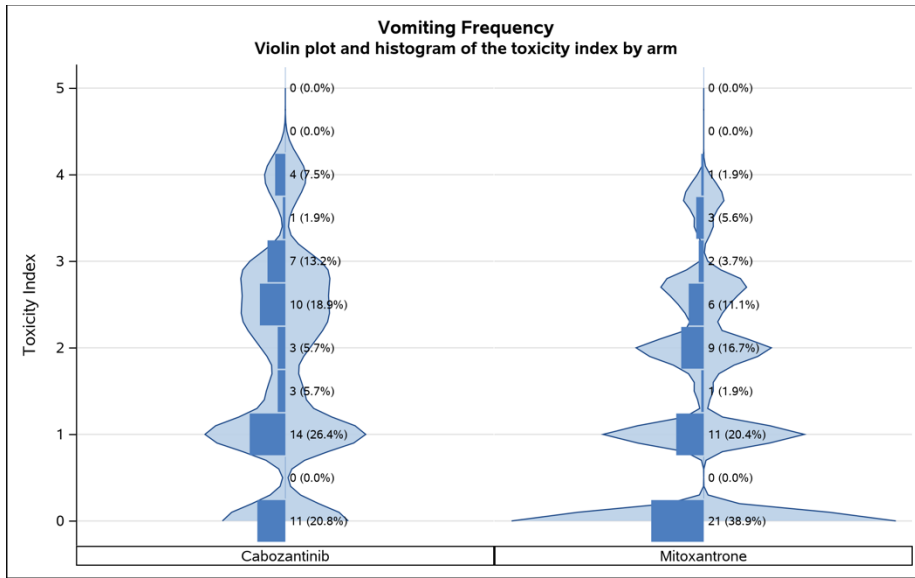
Severity: □ None / ■ Mild / ■ Moderate / ■ Severe / ■ Very severe

Composite Grade: □ 0 / ■ 1 / ■ 2 / ■ 3

Column labels (n) show the number of subjects with an observed symptom score or grade.

*Maximum score or grade reported post-baseline per patient.

**Maximum score or grade reported post-baseline per patient when including only scores that were worse than the patient's baseline score.



Supplemental Figure 11. Density Histograms for all PROCTCAE Items and Composites, by Arm

