

TREM2 is thyroid hormone regulated making the TREM2 pathway druggable with ligands for thyroid hormone receptor

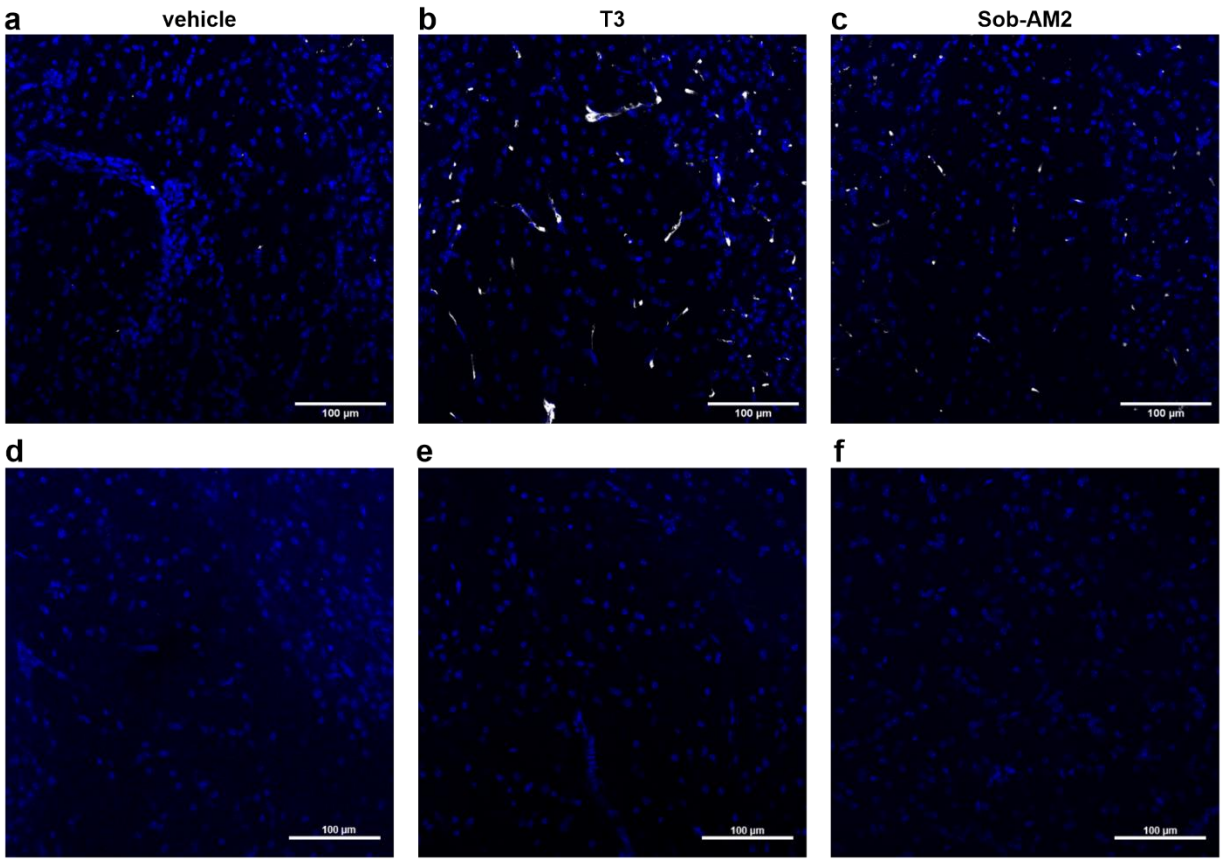
Skylar J. Ferrara¹, Priya Chaudhary^{2,4}, Margaret J. DeBell¹, Gail Marracci^{2,4}, Hannah Miller¹, Evan Calkins^{2,4}, Edvinas Pocius^{2,4}, Brooke A. Napier³, Ben Emery^{4,5}, Dennis Bourdette^{2,4}, and Thomas S. Scanlan¹

¹Department of Chemical Physiology and Biochemistry and Program in Chemical Biology, Oregon Health & Science University, Portland, Oregon, USA. ²VA Portland Health Care System, Portland, Oregon, USA. ³Department of Biology, Portland State University, Oregon, USA.

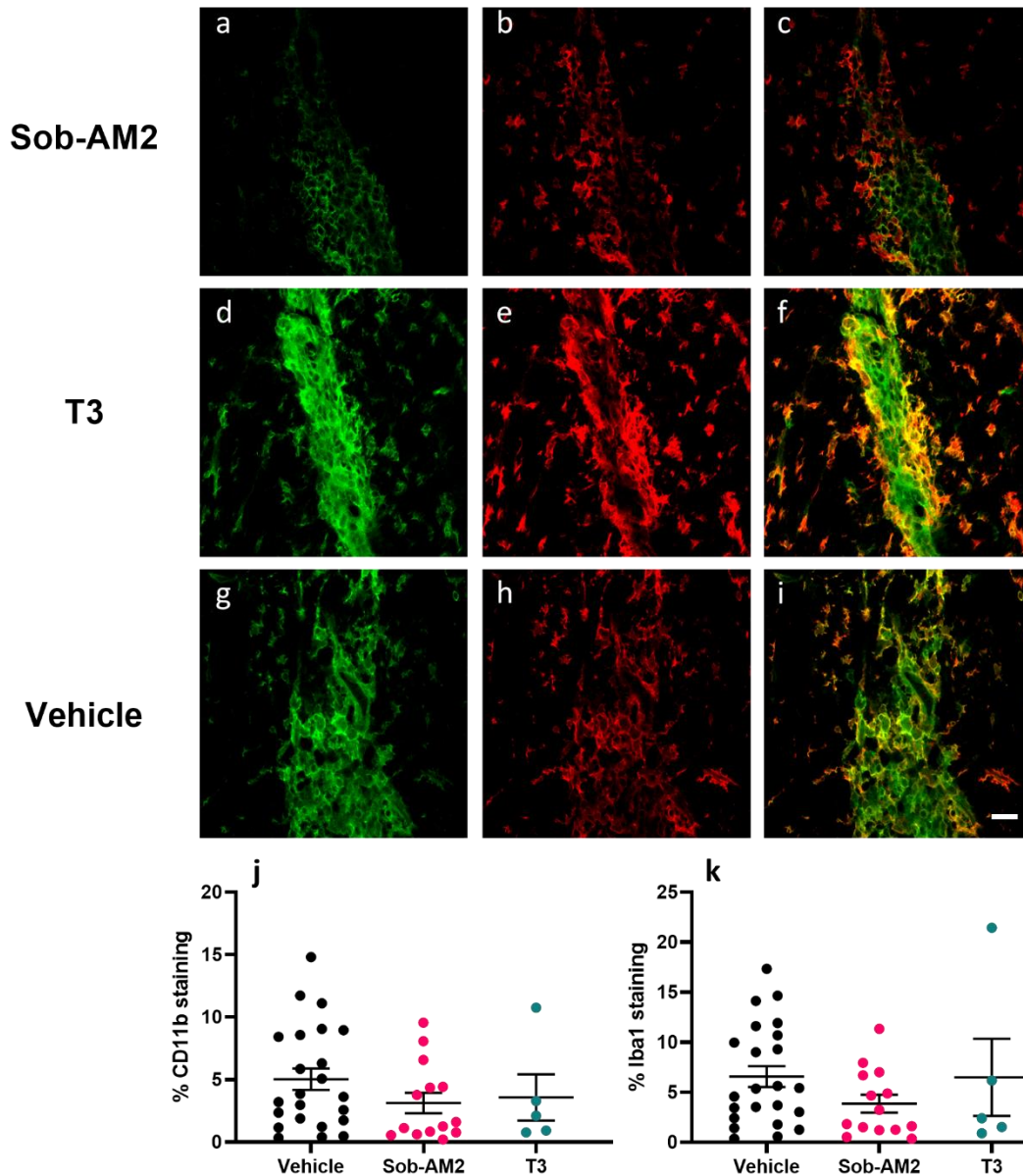
⁴Department of Neurology, and ⁵Jungers Center for Neurosciences Research, Oregon Health & Science University, Portland, Oregon, USA.

Lead Contact:

Thomas S. Scanlan, Department of Chemical Physiology and Biochemistry, L334; 3181 SW Sam Jackson Park Road, Oregon Health & Science University, Portland, OR 97239, USA.
Phone: 503.494.9292; email: scanlant@ohsu.edu



Supplemental Figure S1, Related to Figure 5: (a-c) DAPI and TREM2 co-staining for the representative images in Fig. 5. **(d-f)** No primary controls for each group showing DAPI and TREM2 channels. Scale bars: 100 µm.



Supplemental Figure S2, Related to Figure 5: Representative CD11b (green) and Iba1 (red) staining of dorsal spinal cord sections from Sob-AM2 (**a-c**, 1 mg/kg), T3 (**d-f**, 0.4 mg/kg), and vehicle (**g-i**, DMSO and NaOH) treated mice. Quantification of percent CD11b staining (**j**) and Iba1 staining (**k**) from each representative group. There is no statistically significant difference between any group in **j** and **k** as determined by one-way ANOVA ($P < 0.05$) and Mann-Whitney U tests between vehicle and specific group. Scale bar is 20 μm .

Table S1, Related to Figures 2 and 3: Oligonucleotide sequences used for RT-qPCR. All oligonucleotides were purchased from Eurofins Genomics.

Oligonucleotides
f- <i>Ppia</i> 5'-AGGGTGGTGACTTTACACGC-3'
r- <i>Ppia</i> 5'-CTTGCCATCCAGCCATTCAG-3'
f- <i>Trem2</i> 5'-GACCTCTCCACCAGTTTCTCC-3'
r- <i>Trem2</i> 5'-TACATGACACCCTCAAGGACTG-3'
f- <i>Cd68</i> 5'-TTCTGCTGTGGAAATGCAAG-3'
r- <i>Cd68</i> 5'-GAGAAACATGGCCCGAAGT-3'
f- <i>I11b</i> 5'-TCCAGGATGAGGACATGAGCAC-3'
r- <i>I11b</i> 5'-GAACGTCACACACCAGCAGGTTA-3'
f- <i>I16</i> 5'-GTTGCCTTCTTGGGACTGATG-3'
r- <i>I16</i> 5'-CATACAATCAGAATTGCCATTGC-3'
f- <i>GAPDH</i> 5'-CAGGAGGCATTGCTGATGAT-3'
r- <i>GAPDH</i> 5'-GAAGGCTGGGGCTCATT-3'
f- <i>TREM2</i> 5'-ACAGAAGCCAGGGACACATC-3'
r- <i>TREM2</i> 5'-CCTCCCATCATCTTCCTTCA-3'