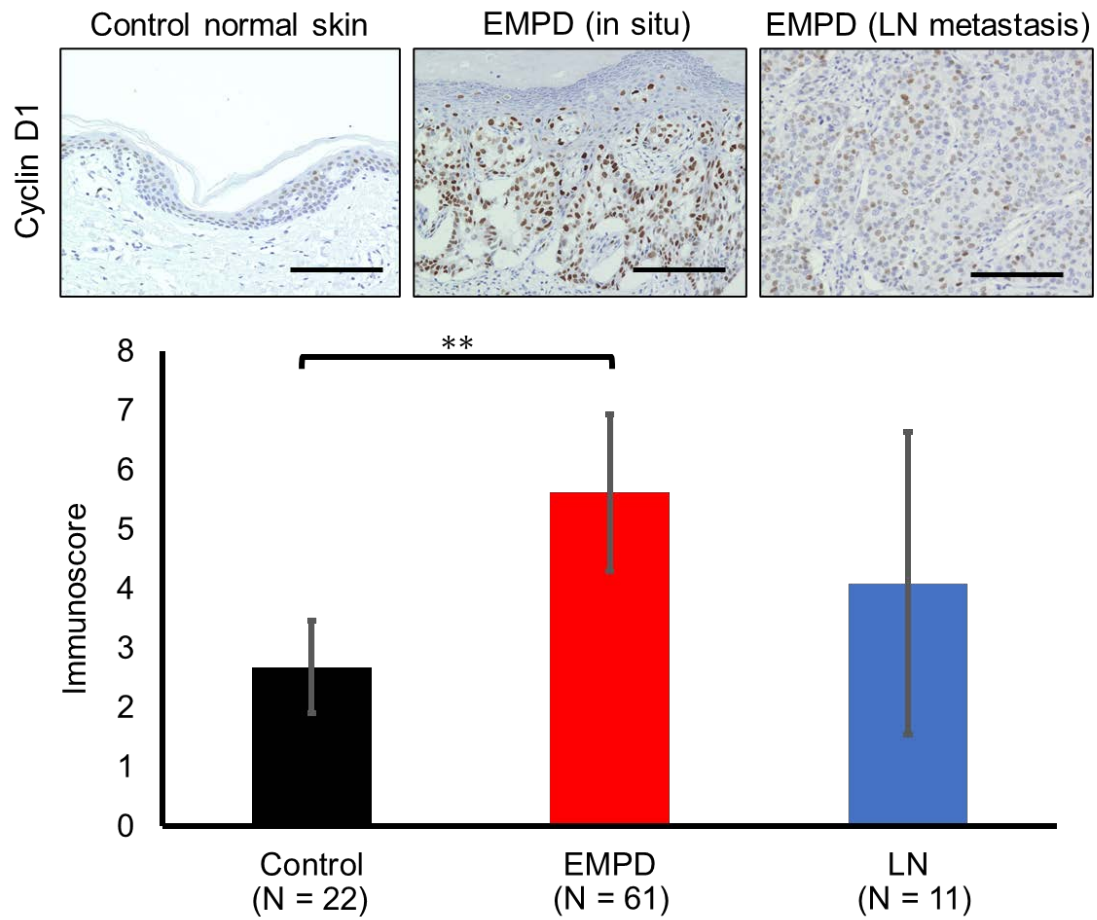


Supplemental Figure S1. The administration of abemaciclib inhibits cell proliferation in EMPD-PDX.

Upper: Representative images of Ki-67 staining (left: control, right; abemaciclib; Scale bar = 100 μ m).

Lower: The Ki-67 positive cells (brown) were counted (Columns, mean percentage of Ki-67 positive cells, n = 3, determinations based on examination of 100 tumor cells; bars, SD). * p < 0.05, by t-test.



Supplemental Figure S2. The expression of cyclin D1 is high in extramammary Paget's disease

Upper: Cyclin D1 immunostaining was performed using specimens of normal skin (N = 22), primary tumor (N = 61), and metastatic lymph node (LN, N = 11). The panels are representative images. Scale bars = 100 μ m.

Lower: The bar graph shows the cyclin D1 immunoscore (IS). **p<0.01