

YMTHE, Volume 30

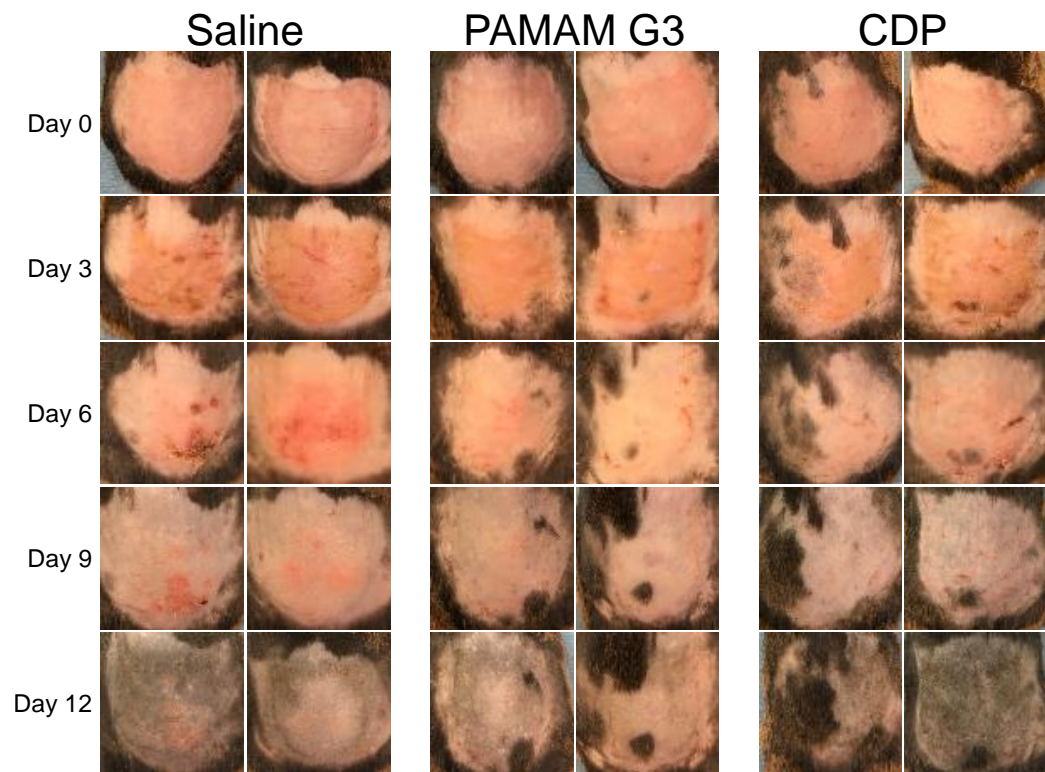
Supplemental Information

β -Cyclodextrin-containing polymer

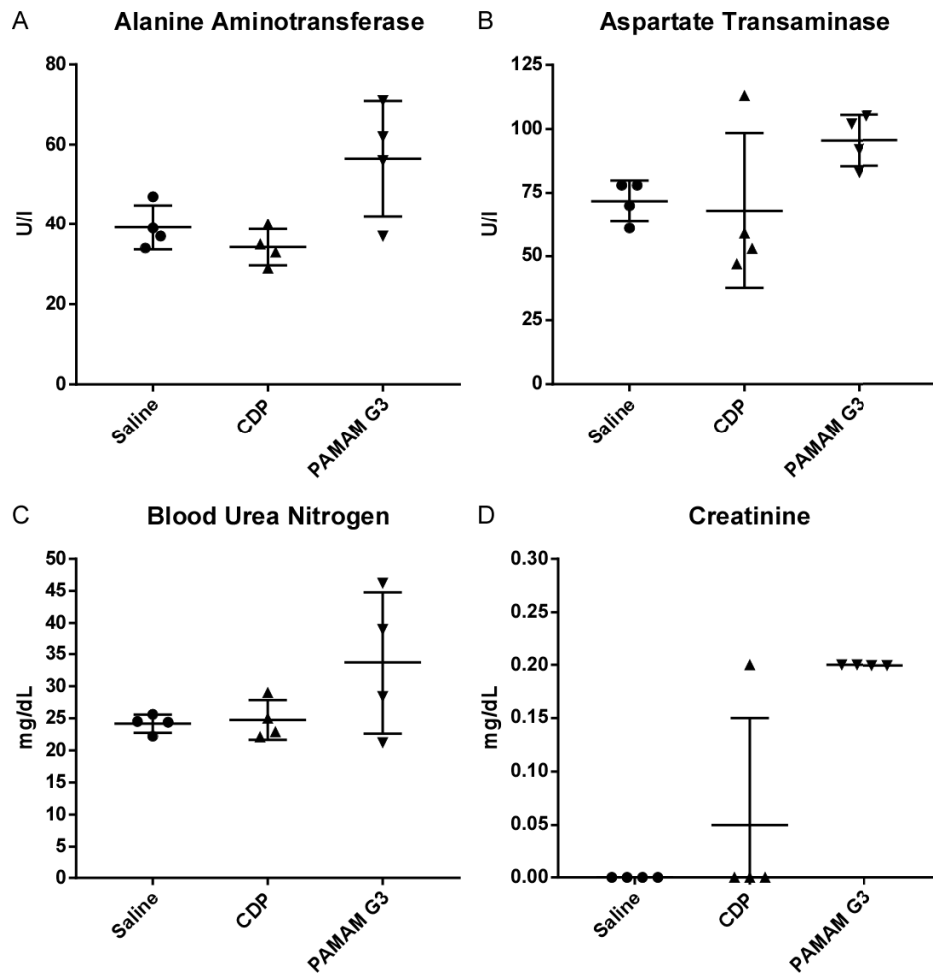
treatment of cutaneous lupus

and influenza improves outcomes

Linsley Kelly, Lyra B. Olson, Rachel E. Rempel, Jeffrey I. Everitt, Dana Levine, Smita K. Nair, Mark E. Davis, and Bruce A. Sullenger



Supplementary Figure 1: Representative images of CLE mice treated subcutaneously with saline, PAMAM G3, or CDP.



Supplementary Figure 2: Uninfected B6 mice were injected intraperitoneally with saline, 40mg/kg CDP, or 20mg/kg PAMAMG3 on days 0, 3, 6, and 9. Serum was collected on day 10, approximately 24 hours after the final dose. A comprehensive chemistry panel was run on serum and results for alanine aminotransferase (A), aspartate transaminase (B), blood urea nitrogen (C), and creatinine (D) are shown.