

Figure S1. Comparison of NEST vs. Electroporation transformation methods on other *S. aureus* strains. Efficiency of transformation was determined using 300 ng of pCM28 plasmid isolated from *S. aureus* RN4220 transformed into NEST competent (black bars) or electrocompetent (gray bars) cells of clinical and *S. aureus* strains from different clonal complexes: RN4220 (control lab strain, CC8), JE2 (MRSA, CC8), Mu50 (MRSA, CC5), MW2 (MRSA, CC1), MRSN 7983 (MSSA, CC8) and HER1049 (MSSA, CC25). Efficiency of boot-up was determined by calculating the number of transformants per 10⁸ CFU. For both methods, ~1×10¹⁰ CFUs were used in transformation mixes. Each data point represents the mean from three independent experiments, and the error bars indicate standard error.

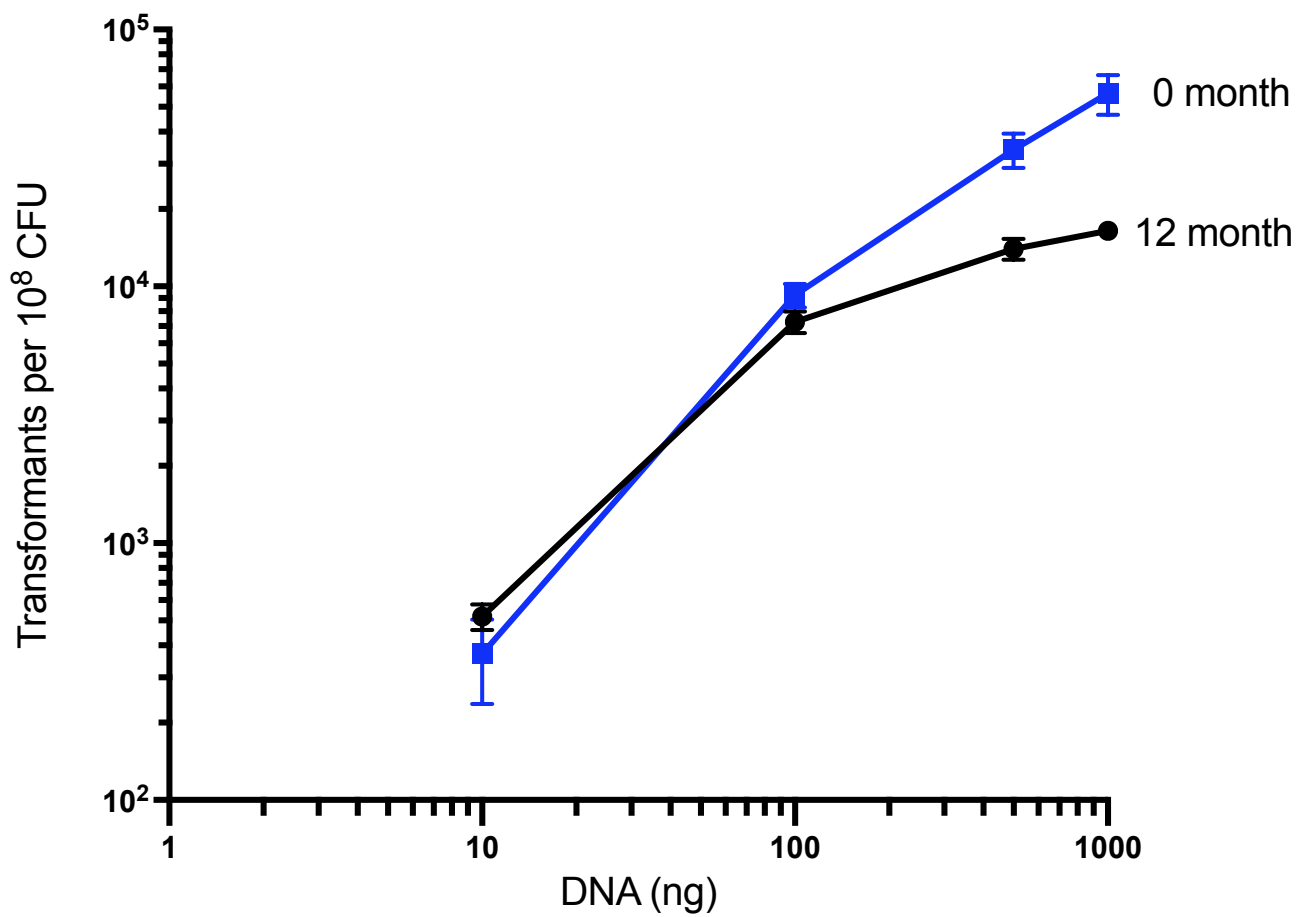


Figure S2. Evaluating the long-term stability of NEST-competent cells. Plasmid pCM28 was transformed into freshly prepared and year old frozen (-80°C) competent cells using the NEST method to evaluate long-term stability. Each data point represents the mean from three independent experiments, and the error bars indicate standard error.

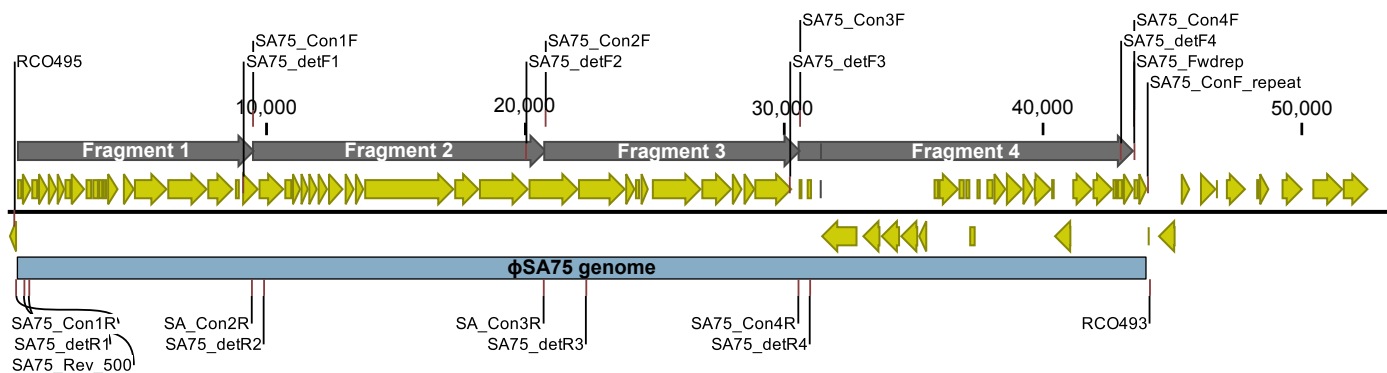
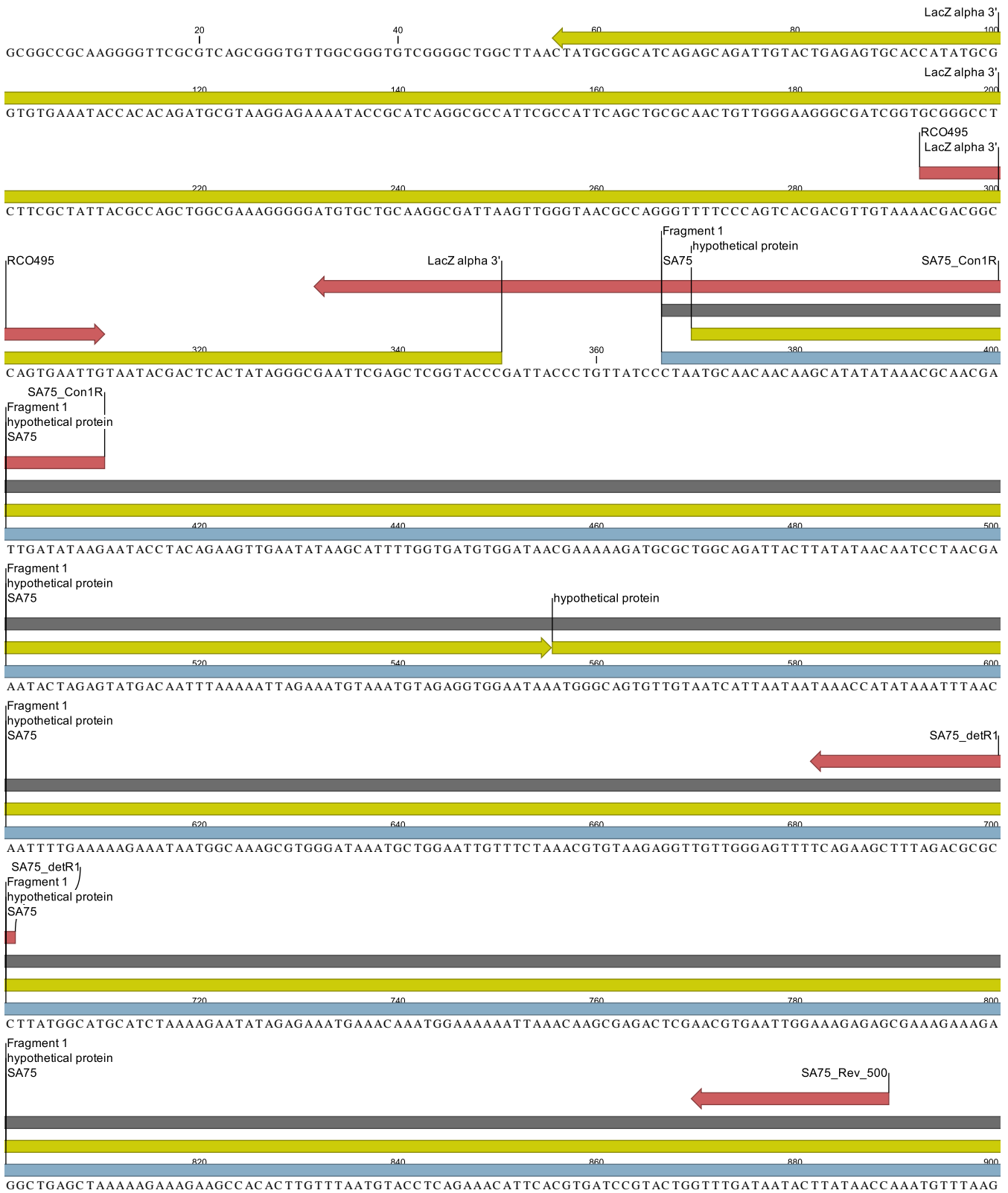
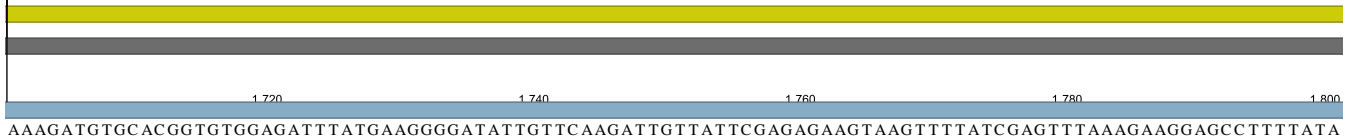


Figure S3. Sequence of the synthetic yeast-assembled SA75 phage genome. The complete sequence of SA75YA was determined on an Illumina NovaSeq 6000 Sp, 300 cycles (2×150) Xp workflow (see below). Above is a linear illustration of assembled SA75 genome within the yeast Ycp vector. Predicted protein-coding sequences are denoted as yellow arrows. A light blue arrow marks the location of the phage SA75 genome within the yeast Ycp/BAC vector while the dark gray arrow delineates the position of each of the four cloned SA75 fragments.





hypothetical protein
Fragment 1
SA75



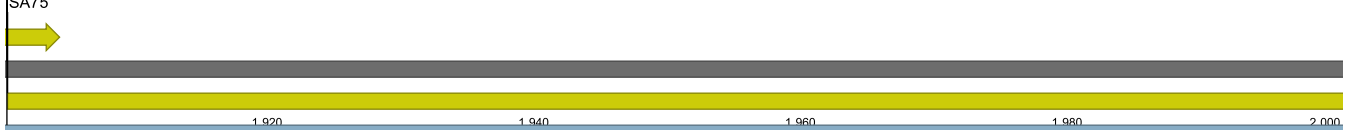
AAAGATGTGCACGGTGTGGAGATTATGAAGGGGATATTGTTCAAGATGTTATTCGAGAGAAGTAAGTTTTATCGAGTTTAAAGAAGGAGCCTTTATA

hypothetical protein
Fragment 1
SA75



TAACTTTTAGCAATGTAAC TGAATTACTAAGTGAAAATGACGATATTATTGAAATTGTTGGAAATATTTTTGAAAATGAGATGCTATTGGAGGTTATGAG

hypothetical protein
Fragment 1
SA75



ATGACGTTACCTTATCAGATGAACAATATAAAAATCTTTGTAAC TCTAAC AAGTTATTAGATAAACTTCAAAAGCATTAAAGATCGTGAAGAGT

Fragment 1
hypothetical protein
SA75



ACAAGAAGCAACGATATGAGCTTATTGGGGTTATAGCGAAGTTACGAGATTGTAAACAAAGAAC TGGAGAAGAAAGCAAGCGCATGGGATAGGTATTGCAA

Fragment 1
hypothetical protein
SA75



GAGCGTTGAAAGAGATTTAATAAACAAATTCGGTAACGATGATGAAAGAGTTAAATTCGGAAATGGAATTAACAAATAAAATTTTTATGGAGGATGACACA

hypothetical protein
Fragment 1
SA75



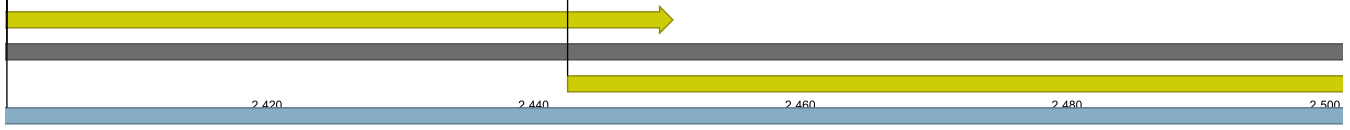
AATGAATAATCGCGAAAAATCGAACAGTCCGTTATTAGTGC TAGTGCGTATAACGGTAATGACACAGAGGGATTACTAAAAGAGTTGAAGACGTGTAT

hypothetical protein
Fragment 1
SA75



AAGAAAGCGCAAGCGTTTGATGAAATACTTGAGGGTTACCTAATGCTATGCAAGATGC ACTCAAAGAAGATATTGAACCTTGATGAAGCAGTAGGGATTA

hypothetical protein
Fragment 1
SA75

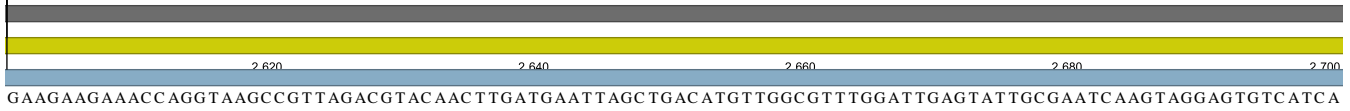


TGACGGGTCAAGTTGTCATAAAATGAGGAGGCACAGGAAAATGACTAACACATTAACAATTGATCAGTTAC AAGAGTTATTACAAATACAAAAGAGT

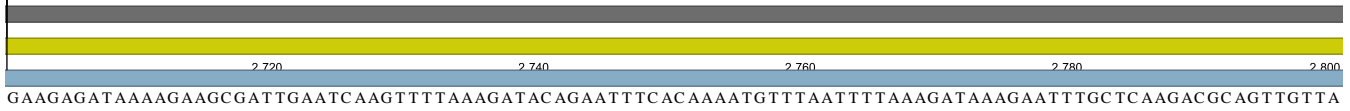
Fragment 1
dut
SA75



Fragment 1
dut
SA75



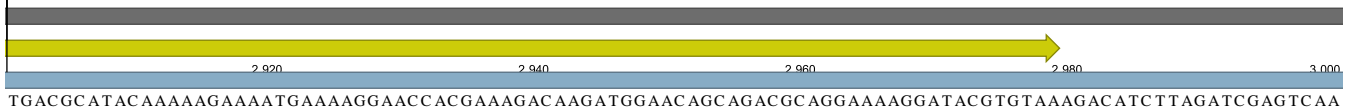
Fragment 1
dut
SA75



Fragment 1
dut
SA75



Fragment 1
dut
SA75

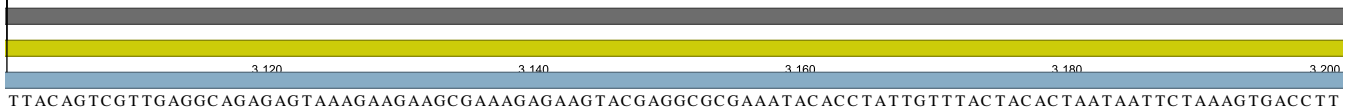


Fragment 1
SA75

hypothetical protein

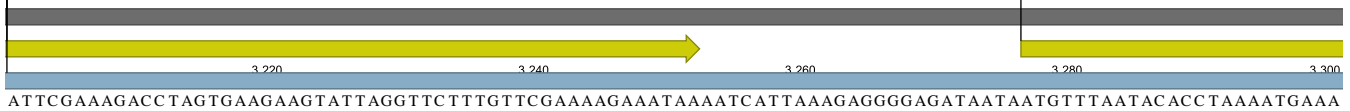


Fragment 1
hypothetical protein
SA75

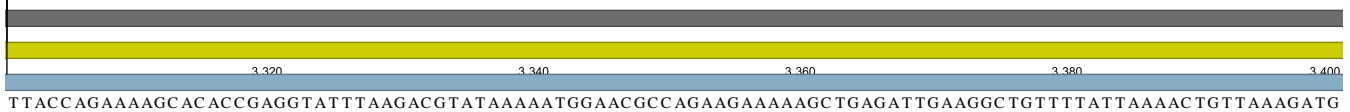


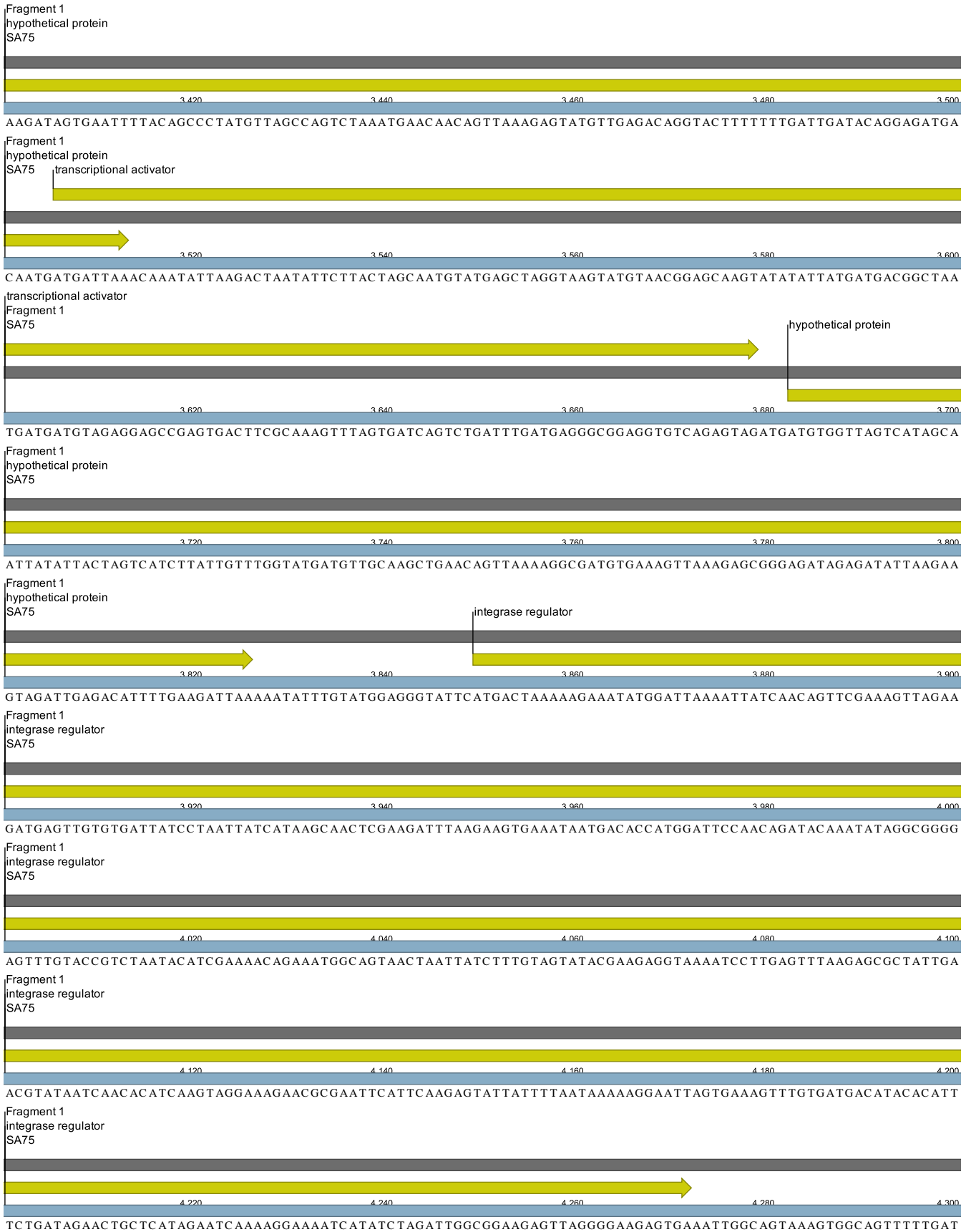
Fragment 1
hypothetical protein
SA75

hypothetical protein



Fragment 1
hypothetical protein
SA75

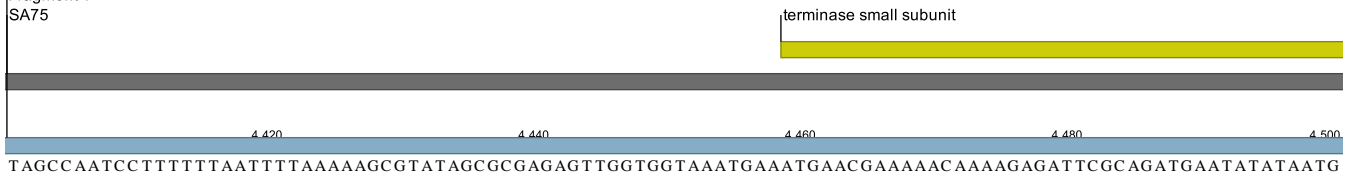




Fragment 1
SA75



Fragment 1
SA75



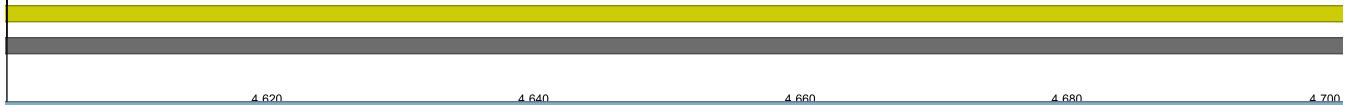
terminase small subunit

Fragment 1
SA75



terminase small subunit

Fragment 1
SA75



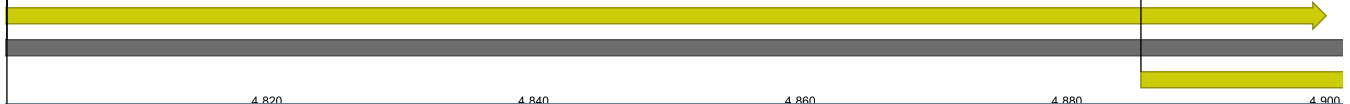
terminase small subunit

Fragment 1
SA75



terminase small subunit

Fragment 1
SA75



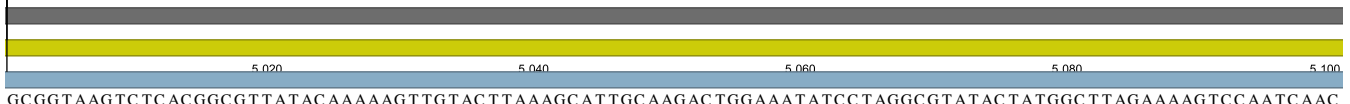
terminase large subunit

Fragment 1
terminase large subunit
SA75

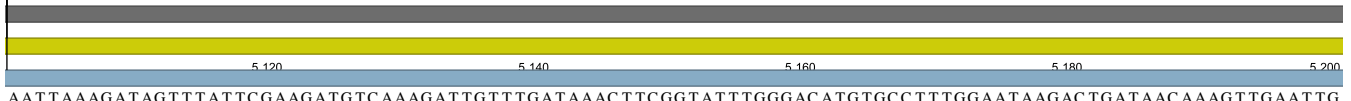


Fragment 1
terminase large subunit

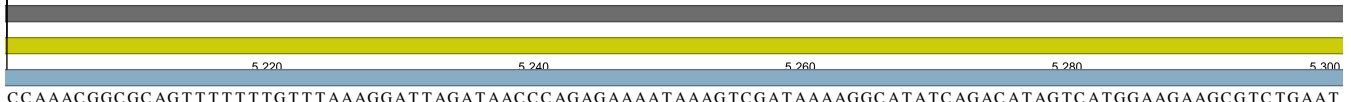
SA75



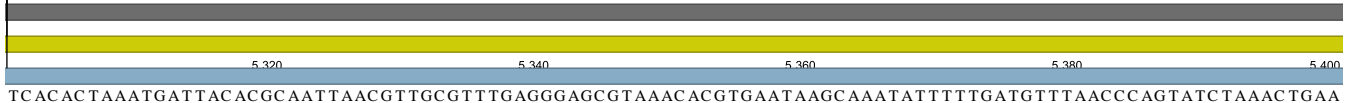
Fragment 1
terminase large subunit
SA75



Fragment 1
terminase large subunit
SA75



Fragment 1
terminase large subunit
SA75



Fragment 1
terminase large subunit
SA75



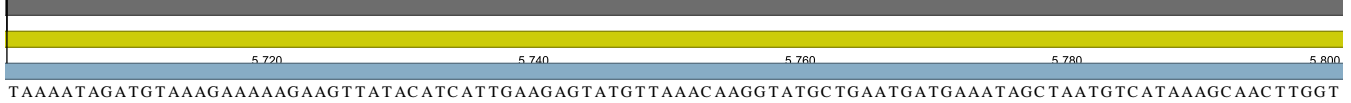
Fragment 1
terminase large subunit
SA75



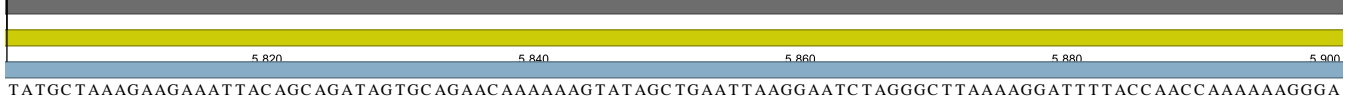
Fragment 1
terminase large subunit
SA75



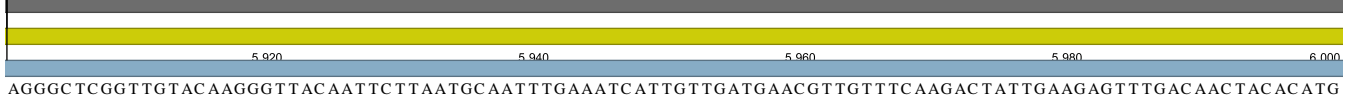
Fragment 1
terminase large subunit
SA75



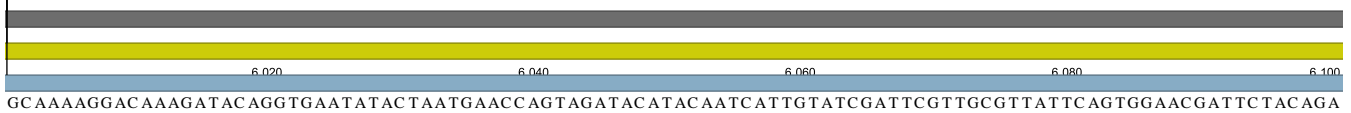
Fragment 1
terminase large subunit
SA75



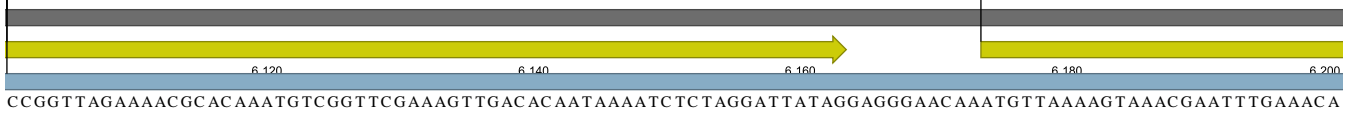
Fragment 1
terminase large subunit
SA75



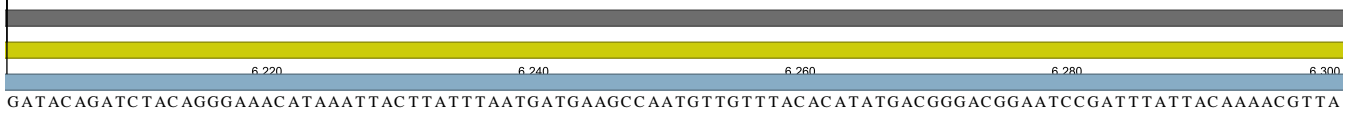
Fragment 1
terminase large subunit
SA75



Fragment 1
terminase large subunit
SA75



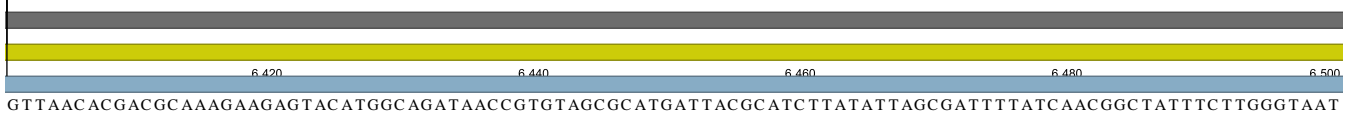
Fragment 1
portal protein
SA75



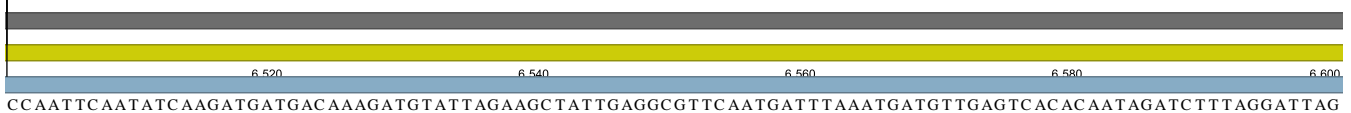
Fragment 1
portal protein
SA75



Fragment 1
portal protein
SA75



Fragment 1
portal protein
SA75



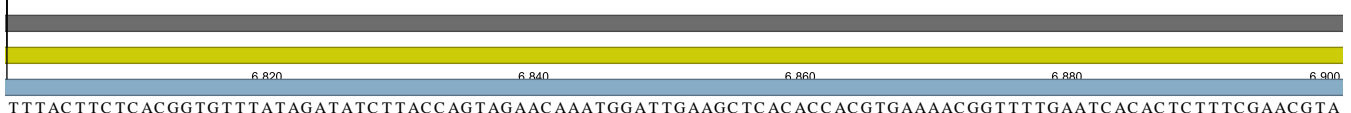
Fragment 1
portal protein
SA75



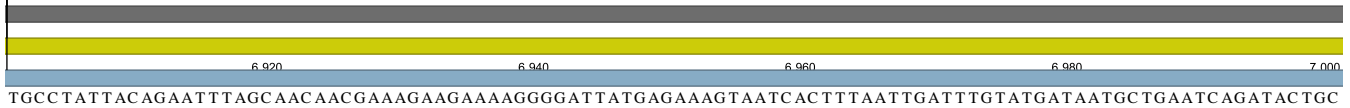
Fragment 1
portal protein
SA75



Fragment 1
portal protein
SA75



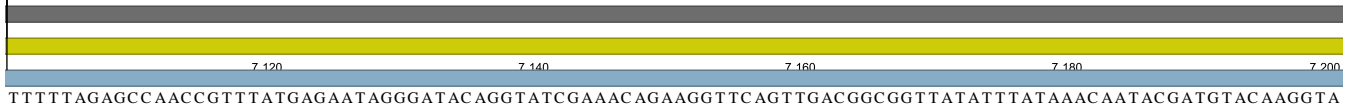
Fragment 1
portal protein
SA75



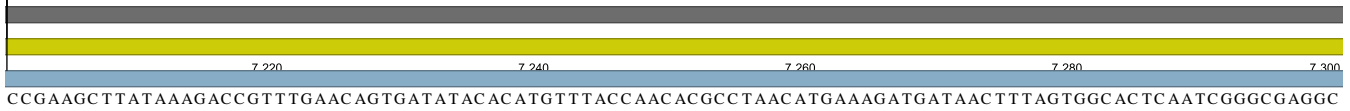
Fragment 1
portal protein
SA75



Fragment 1
portal protein
SA75



Fragment 1
portal protein
SA75



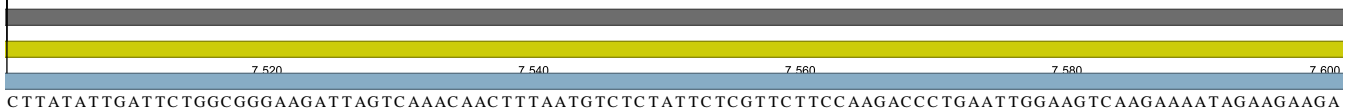
Fragment 1
portal protein
SA75



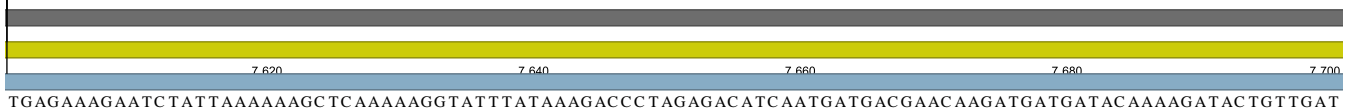
Fragment 1
portal protein
SA75



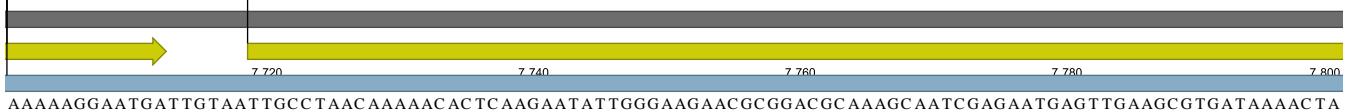
Fragment 1
portal protein
SA75



Fragment 1
portal protein
SA75



Fragment 1
portal protein
SA75



Fragment 1
minor head protein
SA75



AAGCTGAAGAAATAGAACGTATATGAATATGATGATTAAGCGCATTGAAAAAGAAATCAATGCGTTATTGTTAAGTACGGAGATTTTGCAGGCGTTAC

Fragment 1
minor head protein
SA75



ATTACAAGAAGCACAAAAGATTATTGATGAGTTCGATGTAAAAGCGTTCAAGAAGAAGCAAAAAGATTGGTCGAAAAC AAGGAC TTTAGCGATAGAGCA

Fragment 1
minor head protein
SA75



AATGAAGAATTAAGAAGTATAACACTAAGATGTATGTATCTAGAGAACAGATGTTAAAGATTC AAATAGAAATCTTAAATTGCTTATGCAACAGCTCAA

Fragment 1
minor head protein
SA75



CAGAATTATCGATGAGGGAATATTTCAATCAACAGCTTATCGTGTGTTTCAGTGATCAAGCGGTTATTTAGGTGAAGGTGTAC AAGTAGCTAAAGAAGT

Fragment 1
minor head protein
SA75



TATAGATACAATCGTTGATACACAATTTTCATGGTGTGCTTTGGTCAGAGCGATTATGGACTAATAC TGAAGCGATGAAACAAGAAAGTAGAAGAAAT AATT

Fragment 1
minor head protein
SA75



GCTAATGTGGTTATTAGAGGTCGACATCCAAATGAATATGTTAAAGATATGCGCAAGCACCTAAACAATTCGAAGGCACAGCACGACAAAAGACCCGAC

Fragment 1
minor head protein
SA75



CAATTAATCATTGCTTTATACGGAATCGGCACGTGTTACGCACAATCAAGCATTGACAGCATGAAAGAAATTTACCGGAAGGATATTATATGTATAT

Fragment 1
minor head protein
SA75

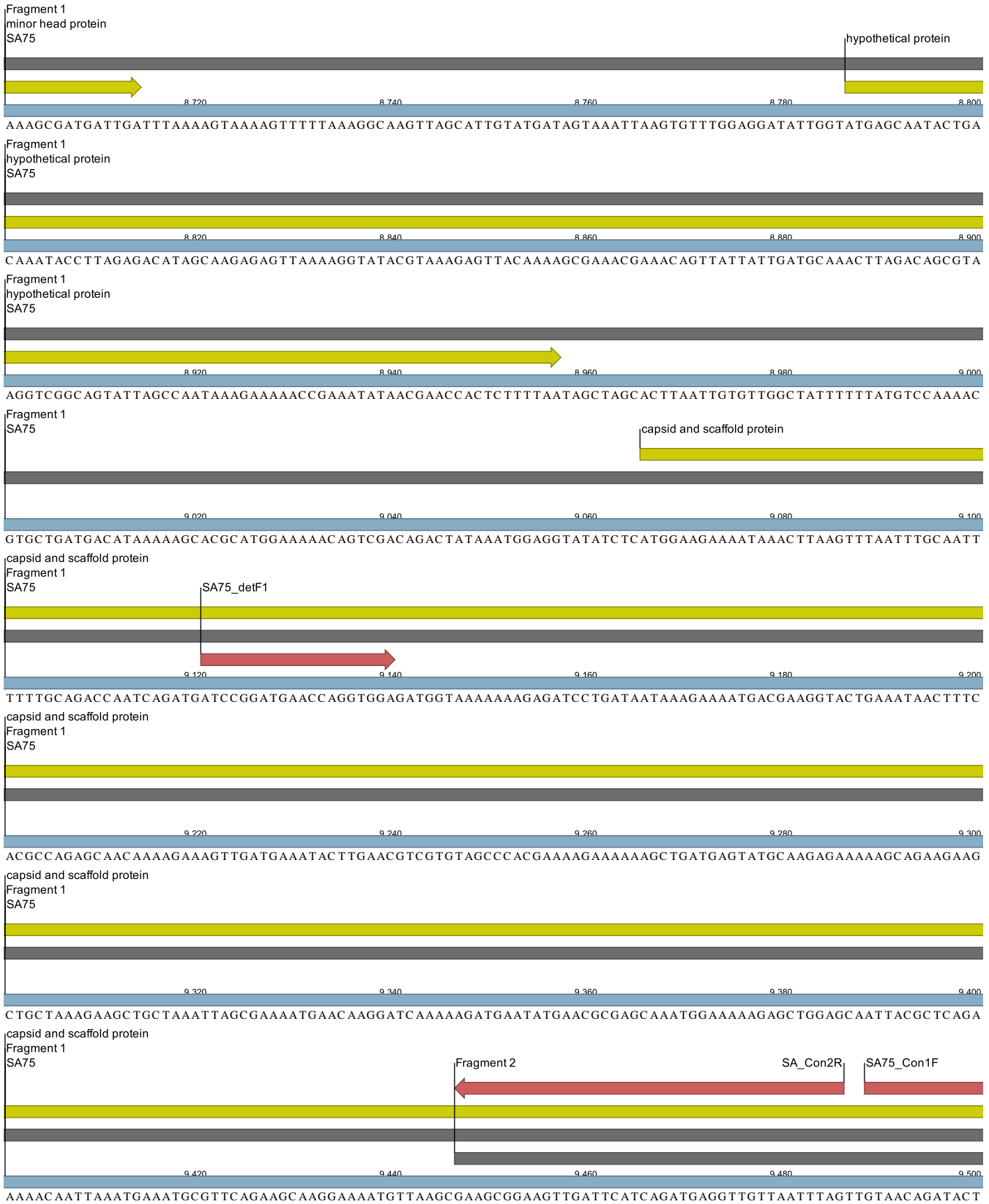


TGCAAAAATCGATAATAGAACAAC TAAAGTATGTAAAGGGCTTAAACGGAGAAATATTC AAAGTTAAAGACGCTAAAATGGTGTTAATTTCTACCC TATG

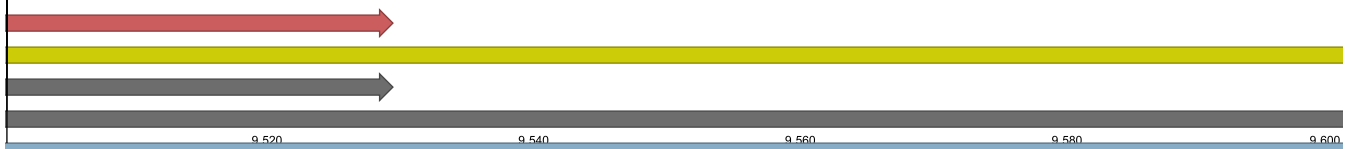
Fragment 1
minor head protein
SA75



CATATCAATTGTCGTTTCAGATTGTGCATTACTACCTAAATCTATGTGGCCGAAAAAACCAAAAACGACAAACAAAATAC TTTGGAGGAAAAGTGA

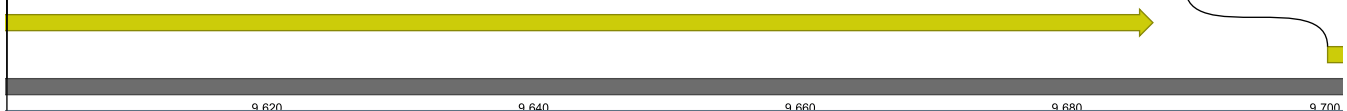


SA75_Con1F
capsid and scaffold protein
Fragment 1
Fragment 2
SA75



GCTGAACAAACTAAATTGAATGTTGAAGCTTTTTCTAATGCAGTAAAAAAGCGGTTAATGAAGCGGTTAAGGTTAACGCTAGACAAATCGCCATTAAGT

capsid and scaffold protein
Fragment 2
SA75



GTGGAGATTCATTTAATCACTCATCTAAAAACAAACAAACAAACTTAGCTGAAATAGCTAGACAAAAAGAATTATTTAAAAATT AACGGAGGCATTTAAA

major capsid protein
Fragment 2
SA75



TGGAACAAACACAAAAATTTAAATTTAAATTTGCAACATTTTGCAGTAACAATGTTAAACCGCAAGTATTTAACCTGATAATGTAATGATGCACGAAAA

major capsid protein
Fragment 2
SA75



GAAAGATGGCACGTTGATGAATGAATTCAC AACGCCCATCTTACAAGAGGTTATGGAAAACCTAAAAATTATGCAATTAGGTAAGTACGAACCAATGGAA

major capsid protein
Fragment 2
SA75



GGTACTGAGAAGAAGTTTACTTTTTGGGCTGATAAACAGGTGCTTACTGGGTAGGTGAGGGTCAAAAAATTGAAACGCTAAGGCTACTTGGGTTAATG

major capsid protein
Fragment 2
SA75



CTACTATGAGAGCGTTTTAAATTAGGGGTTATCTTACC TGTAACAAAAGAAATTTTGAATTACACTTATTCAC AATCTTTGAAGAAATGAAGCCTATGAT

major capsid protein
Fragment 2
SA75



TGCTGAAGCATTCATAAAAAGTTTGATGAAGCGGTTATTTGAATCAAGGTAACAATCCATTCGGTAAATCAATGTCACAATCAATTGAAAAAAC TAAT

major capsid protein
Fragment 2
SA75



AAGGTTATTAAGGTGACTTCACACAAGATAACATTATTGATTTAGAGGCATTACTTGAAGATGACGAATTAGAAGCAAAATGCGTTTATCTCAAAAACAC

major capsid protein
Fragment 2
SA75



AAAACAGAAGCTTGTTACGTAAAATGTAGATCCTGAACTAAGGAACGATTTATGACCGTAACAGTGATACGTTAGATGGTCTACCTGTGGTTAACTT

major capsid protein
Fragment 2
SA75



TAAATCAAGCAATTTAAAACGCGGTGAATTAATTACTGGTGACTTTGTAAAGTTGATTTACGGTATCCCTCAATTAATTGAATACAAAATCGATGAACTT

major capsid protein
Fragment 2
SA75



GCACAATTATCTACAGTTAAAACGAAGATGGCACACCTGTAAACTTATTCGAACAGACATGGTGGCATTGCGTGCAACTATGCATGTAGCGTTACACA

major capsid protein
Fragment 2
SA75



TCGCTGACGATAAAGCATTCGCTAAATTAGTGCTGCTGACAAAAAACAGATTCAGTACCAGGAGAAGTTTAAATAAATAATTAGGAGTGGTAACATGCC

hypothetical protein
Fragment 2
SA75



CGAAATCATTGGAATTGTTAAAGTAGATTTACAGATTTAGAAGATAACAGACATGTCTATATGAAAGGGCATGTCTACCCTCGCAAAGGTTATGATCCTT

hypothetical protein
Fragment 2
SA75



ACAGATGAACGTATCAAAGCTTTAGCTAGTGTGAAAATAAACGCAACGAACAAATGATTTACATTGTAATGACAAATTAACCAAAAAAGAAC TTGTCC

hypothetical protein
Fragment 2
SA75



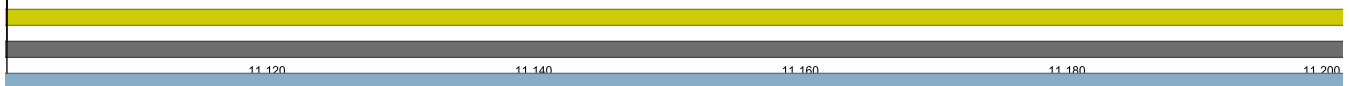
AAATAGCAAGTGTGCTGGCTTAC AAGTTGATGAAAAACAAACAAAAGCTGAAATATCAATGCTTTTGAGTCACTAGAGTAGGTGGTTATATGACTACG

hypothetical protein
Fragment 2
SA75

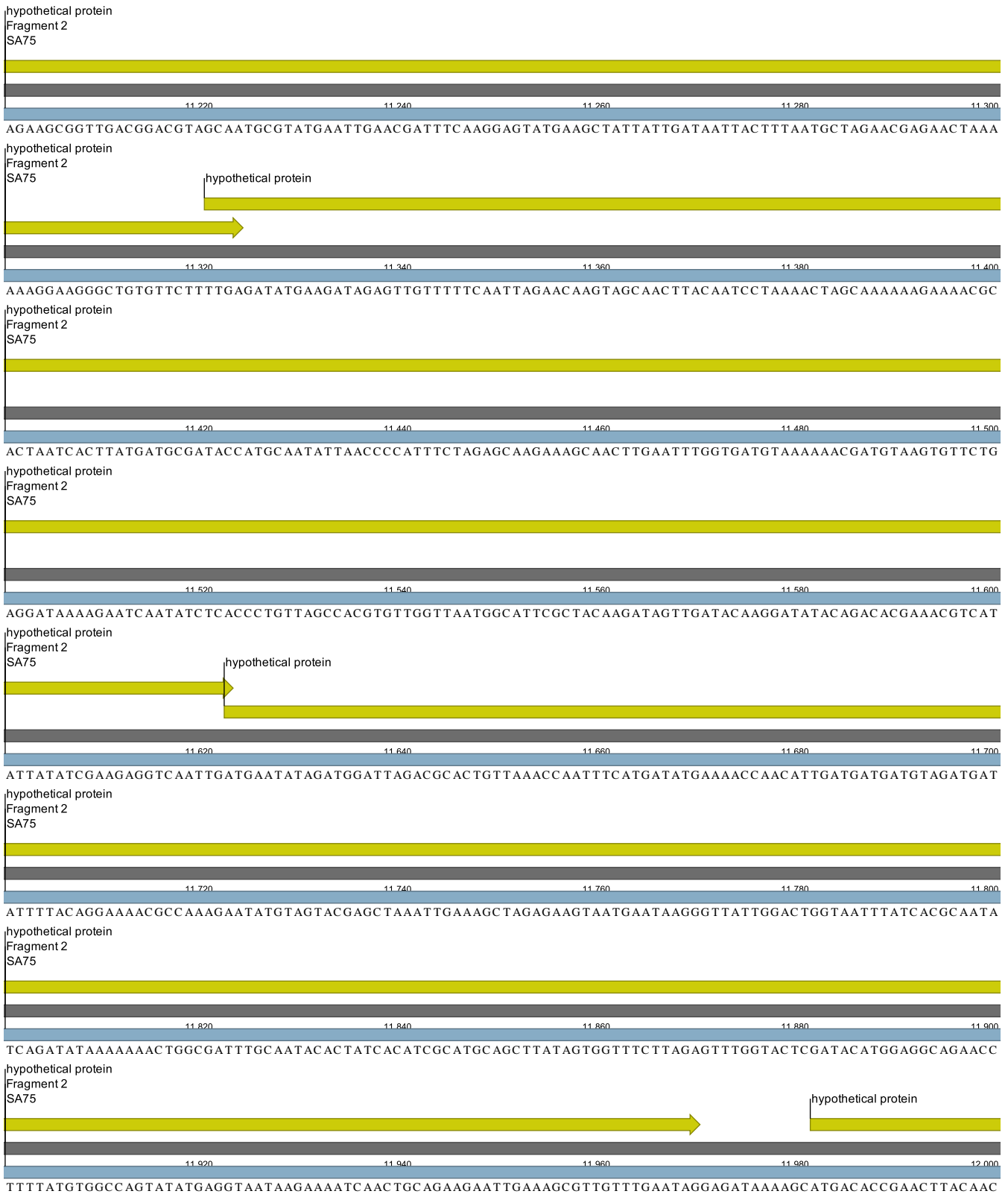


CTAGCTGATGTAAAAAACGTATTGGTCTTAAAGATGAAAAGCAAGATGAACAATTAGAAGAAATCATAAAAAGTTGTGAAAAGCCAGTTGTTATCAATGT

hypothetical protein
Fragment 2
SA75



TACCTATTGAAGTTGAACAAATACCGAAAGGTTTAGTTACATGATTAAGAAGTTGCAGTTAAACGCTACAACAGGATTTGGTGC TGAAGGTATGACATC

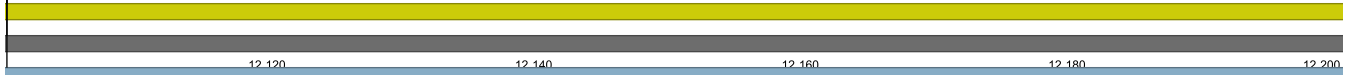


hypothetical protein
Fragment 2
SA75



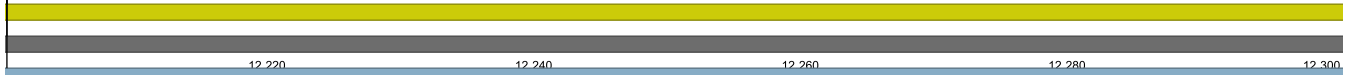
TTTATAATAAAGCGTATGAAACGC TACAAGGATATGGATTCCTGTTATTTCTCGTAAAGAGATGC AAC AAGAGATTCGATCC TTTTTTGTAAATAAA

hypothetical protein
Fragment 2
SA75



AATGCCGGAGTCAAAATAGAAGTAAGTACACGTTTGATAGTTATCTGGCGATACGAATTTAGTTATTGATATTGGAGTGTAAGCGATGATTTAGGACAT

hypothetical protein
Fragment 2
SA75



CATGACGGACTTGTTAAAAGGTGTATCGATGATTTAACACCTAGCGTTAAAACAAACGATTATGAC TTTGAAGAAGATGATACTAACATCGCACAGTTAG

hypothetical protein
Fragment 2
SA75



TCGATGATAC TACTAATCAAGAATTGCTACACACATCAATAACGATATCTTACAAAACATTTTAAAAAACGGAGGAATATTAATGGCGAATATGAAAAA

hypothetical protein
Fragment 2
SA75



TAGTAATGACCGTATTATTTGTTTAGAAAAGCTGGCGAAAAAGTAGATGCTACTAAAATGCTTTTTTTAAC TGAATACGGCTTATCACATGAAGCTGAT

hypothetical protein
Fragment 2
SA75



ACAGATACAGAGGATACGATGGATGGGTC TTATAACACTGGTGGTTCAGTTGAATCAAC AATGTC TGGTACTGCTAAAATGTTTTATGGTGACGATTTTG

hypothetical protein
Fragment 2
SA75



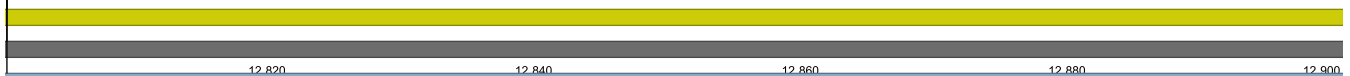
CAGATGAAATTGAAGATGCAGTTGTAGATCGCGTATTGTATGAGGCTTGGGAAGTTGAAAGTAGAATACCAGGCAAAAATGGAGATGCTACTAAAATTTAA

hypothetical protein
Fragment 2
SA75

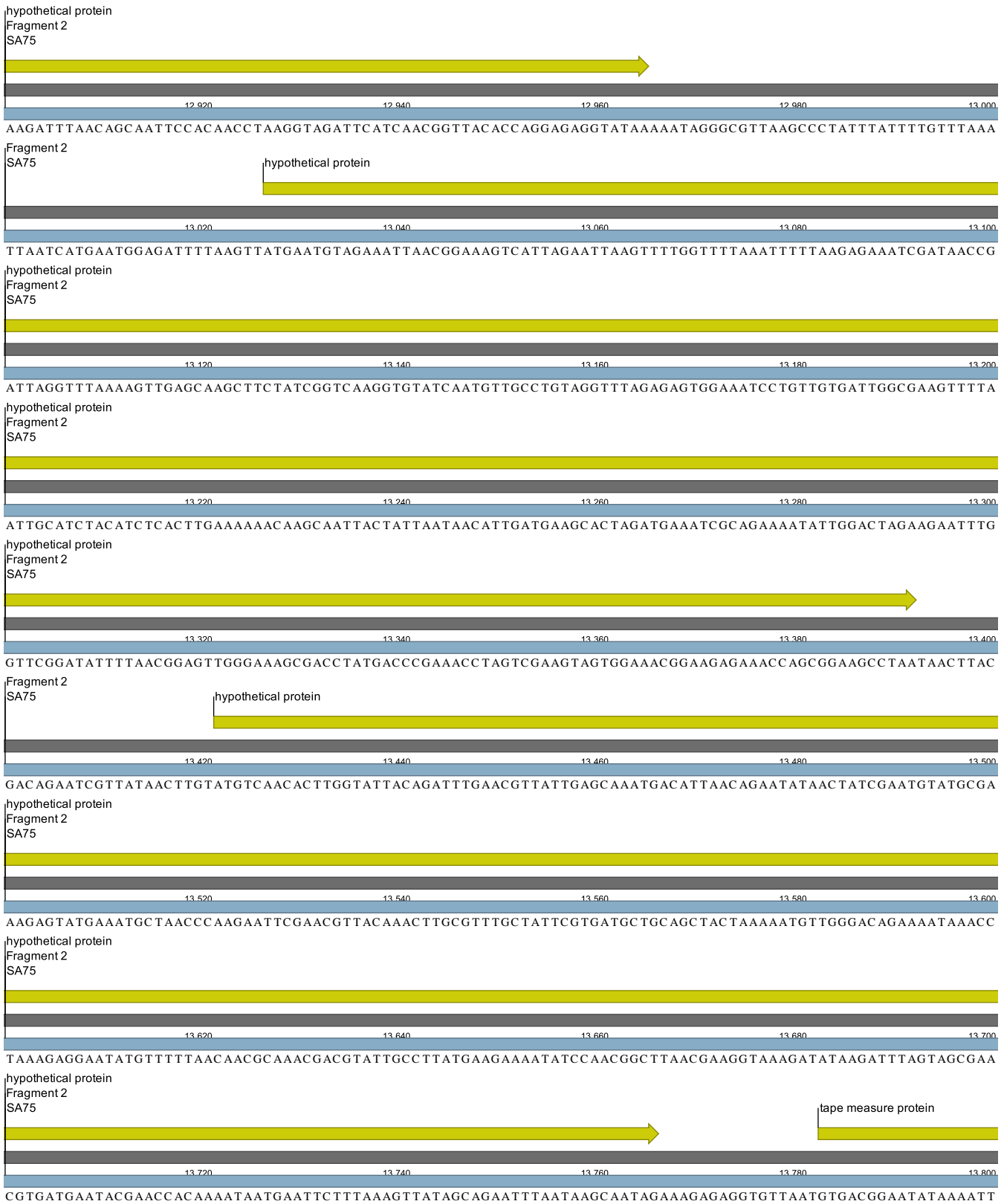


AGCGAAATATTTCCAAGGTTTCCACAATAAATTTGAATTA AAAAGCAGAAGCTAACGGTATTGATGAATATGAATATGAATATGGAGTGAATGGTCGTTTC

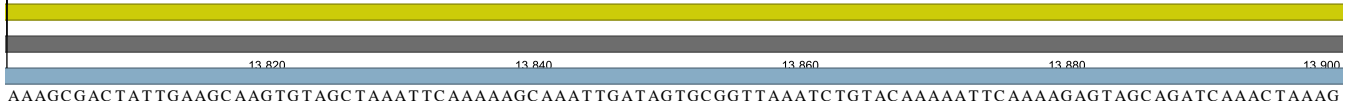
hypothetical protein
Fragment 2
SA75



CAACGTGGATTGCAACACTACC TGAGGCTGTAAC AAAGAACTTAAGGCGACTGGATACAGATTCCATGACACTACAAAAGCAGATGCGTTAAC TGGCG

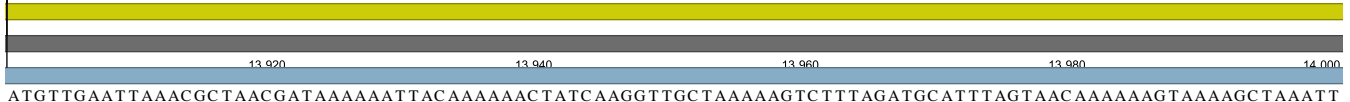


tape measure protein
Fragment 2
SA75



AAAGCGACTATTGAAGCAAGTGTAGCTAAATTCAAAAAGCAAATTGATAGTGCGGTTAAATCTGTACAAAAATTCAAAAGAGTAGCAGATCAAAC TAAAG

tape measure protein
Fragment 2
SA75



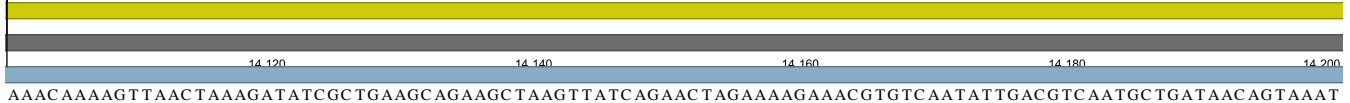
ATGTTGAATTAAACGCTAACGATAAAAAATTACAAAAAATATCAAGGTTGCTAAAAAGCTTTTAGATGCATTTAGTAACAAAAAAGTAAAAGCTAAATT

tape measure protein
Fragment 2
SA75



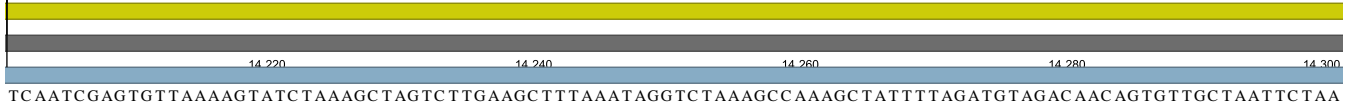
AGATGCTAAAATAGAAGATCTACAACAAAAAGCTTTAGAAGCAAGTTTTGAATTAATCAATTAGATTCAAAAGAAGTTACACCAGAAGTTAAGTTACAA

tape measure protein
Fragment 2
SA75



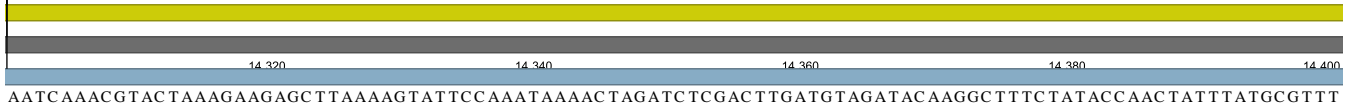
AAACAAAAGTTAACTAAAGATATCGCTGAAGCAGAAGCTAAGTTATCAGAACTAGAAAAGAAACGTGTC AATATTGACGTC AATGCTGATAACAGTAAAT

tape measure protein
Fragment 2
SA75



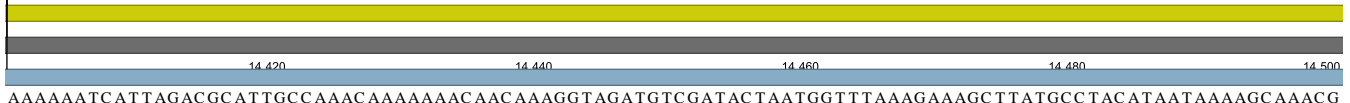
TC AATCGAGTGTTAAAAGTATCTAAAGCTAGTCTTGAAGCTTTAAATAGGTCTAAAGCCAAAGCTATTTTAGATGTAGACAACAGTGTGCTAATTC TAA

tape measure protein
Fragment 2
SA75



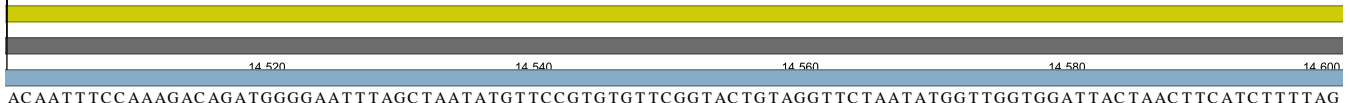
AATCAAACGTACTAAAGAAGAGCTTAAAAGTATTCGAAATAAACTAGATCTCGACTTGATGTAGATACAAGGCTTTC TATACCAACTATTTATGCGTTT

tape measure protein
Fragment 2
SA75



AAAAAATCATTAGACGCATTGCCAAACAAAAAACAACAAAGGTAGATGTCGATACTAATGGTTTTAAAGAAAGCTTATGCC TACATAATAAAAGCAAACG

tape measure protein
Fragment 2
SA75



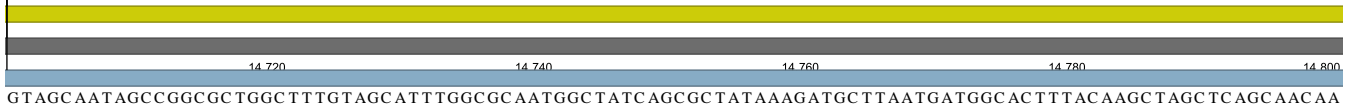
ACAATTTCCAAAAGACAGATGGGGAATTTAGCTAATATGTTCCGTGTGTTCCGGTACTGTAGGTTCTAATATGGTTGGTGGATTACTAACTTCATCTTTTAG

tape measure protein
Fragment 2
SA75



CATTTTAATACCTGTAATAGCGAGCGTAGTACCTGTAGTGTTCACATATTAACGCTATCAAAGTGTTAAC TGGTGGTG TACTTGC TTTAGGTGGTGCG

tape measure protein
Fragment 2
SA75



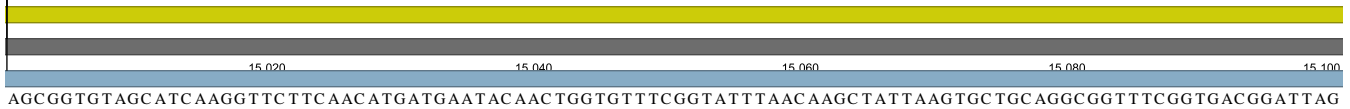
tape measure protein
Fragment 2
SA75



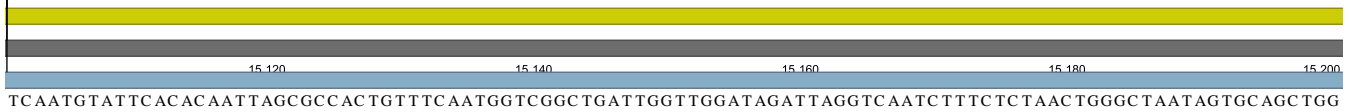
tape measure protein
Fragment 2
SA75



tape measure protein
Fragment 2
SA75



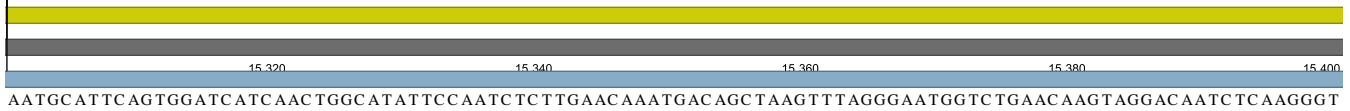
tape measure protein
Fragment 2
SA75



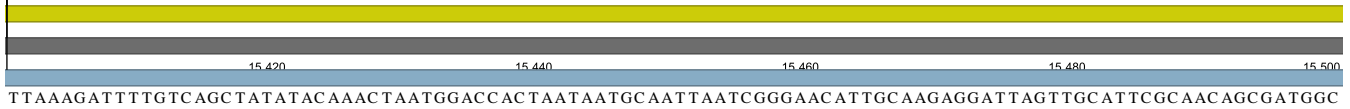
tape measure protein
Fragment 2
SA75



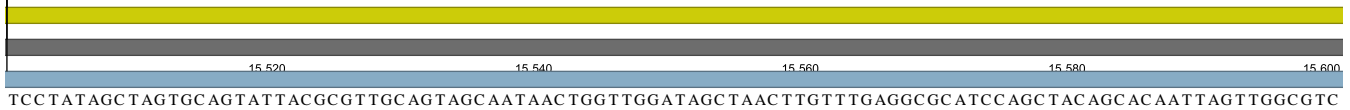
tape measure protein
Fragment 2
SA75



tape measure protein
Fragment 2
SA75



tape measure protein
Fragment 2
SA75



tape measure protein
Fragment 2
SA75



ATTATAACTTTAGTTGGTGCATTTAGATTTTAAATTGCTCCAATATTAGCGGTAATGGATTTTCTGGGGCCATTAGCAGCAAGATTAGTCGCATTAGTAA

tape measure protein
Fragment 2
SA75



CTAAGTTTGGTTGGGCTAAAACAGGAACTTTAGTATTAAAGTAAGGCAATGACATCATTAAAAGGTCCAATAAAATTAGTTACAGCTATATTCCAATTGTT

tape measure protein
Fragment 2
SA75



ATTCGGTAAGATTGGATTAATTAGAAATGCTATCACAGGACTAGTAAC TGTGTTTGGTATTTTAGGTGGTCCATAAAC AATAGTTATTGGTGTAATCGCT

tape measure protein
Fragment 2
SA75



GCATTAATAGCTATATTCGTTTTATTTTGGAAATAAAATGAAGGATTCAGAAAC TTTATTATAAATGCTTGGAAATGCGATAAAAACGTTTATGGTTACAG

tape measure protein
Fragment 2
SA75



TTTGGAAATGTTGAAAAC TGTAGCATCGGTTGTATGGAATGCTATTTTAAAAGCTATCAC TACAGCAGTAAC TAATGTATACAATTTTATAATGATGTT

tape measure protein
Fragment 2
SA75



TTGGAATCAAAATAGTCGCTTATTTACAAGGGTTATGGAATGGAATTATCGCTATTGCAAC AACGGTGTGGAACCTTTTAGTTACAATCATCACAACTGTT

tape measure protein
Fragment 2
SA75



TTCACGACGATAATGAC AATAGTTATGACGATATGGACAGCTATTTGGACATTC TTAAGTACAATC TGGAAC ACGATAATTACAATCGCTACTACGATTT

tape measure protein
Fragment 2
SA75



GGAATTTGTTAGTCACTGTAAATACTACAGTGTACCACAATTATGACTATCGCAATGACAATTTGGAACGCTATTTGGACGTTCTTACAACGTTGTG

tape measure protein
Fragment 2
SA75

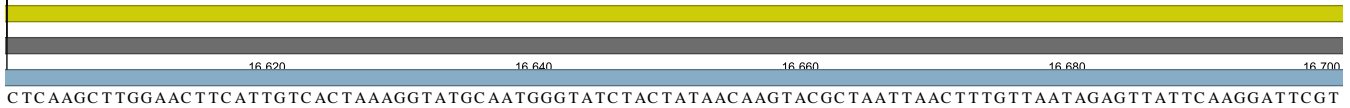


GAACACTATAGTTACTGTGGCAACTAAGGTTTGGAACGCTATCAC TACAGCTATATCTACTGCGTTACAAGCGGCATGGAGTTTTATTTC TAATATATGG

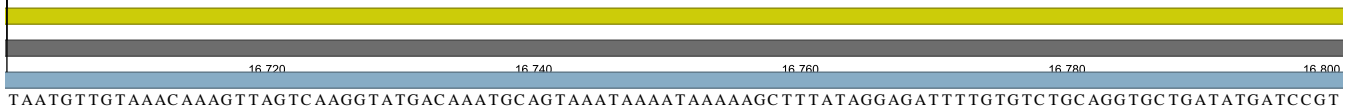
tape measure protein
Fragment 2
SA75



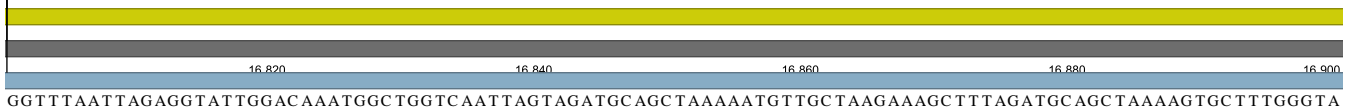
tape measure protein
Fragment 2
SA75



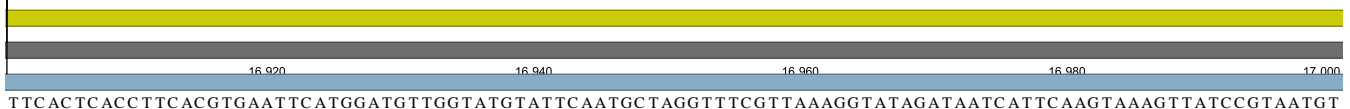
tape measure protein
Fragment 2
SA75



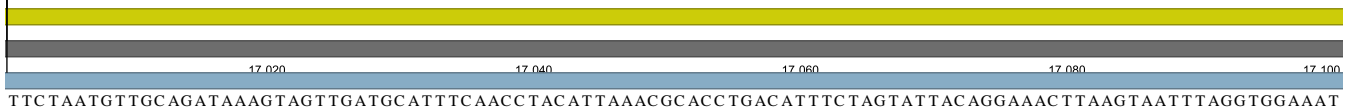
tape measure protein
Fragment 2
SA75



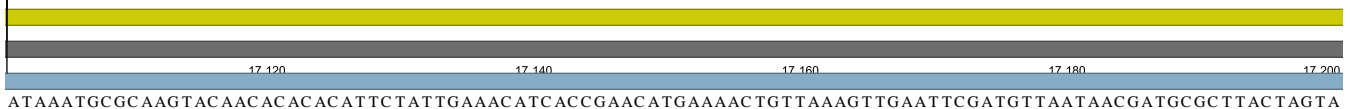
tape measure protein
Fragment 2
SA75



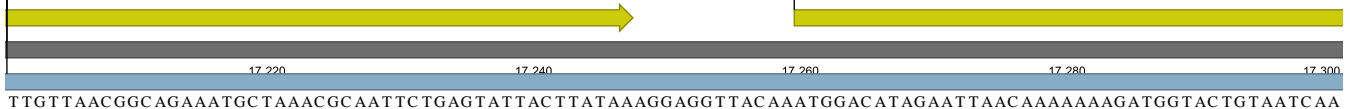
tape measure protein
Fragment 2
SA75



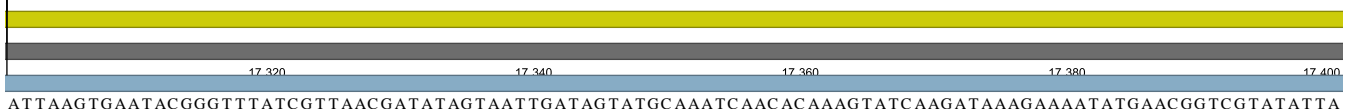
tape measure protein
Fragment 2
SA75



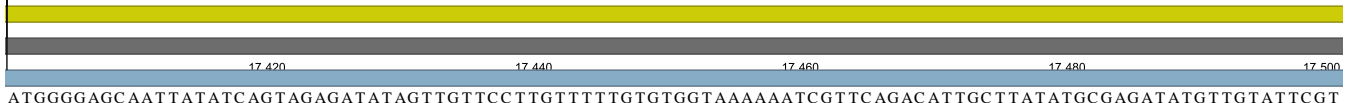
tape measure protein
Fragment 2
SA75



putative distal tail protein
Fragment 2
SA75



putative distal tail protein
Fragment 2
SA75



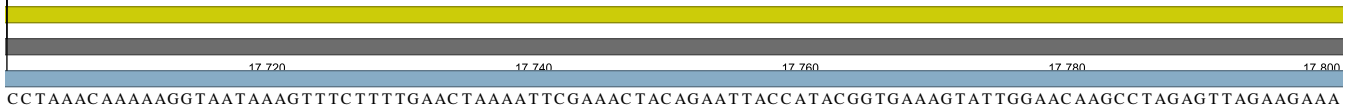
putative distal tail protein
Fragment 2
SA75



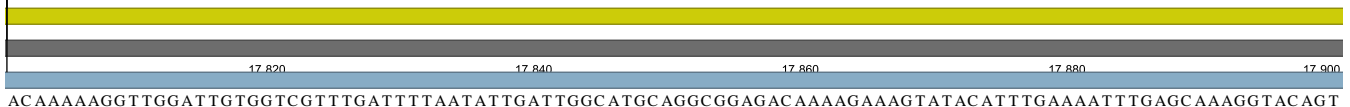
putative distal tail protein
Fragment 2
SA75



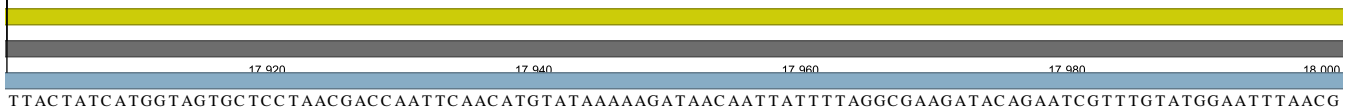
putative distal tail protein
Fragment 2
SA75



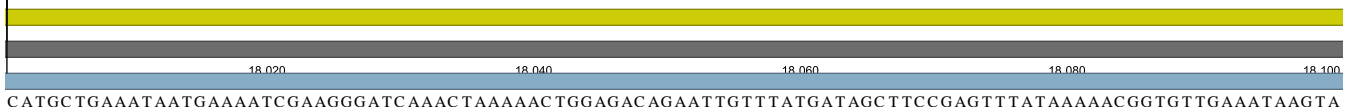
putative distal tail protein
Fragment 2
SA75



putative distal tail protein
Fragment 2
SA75



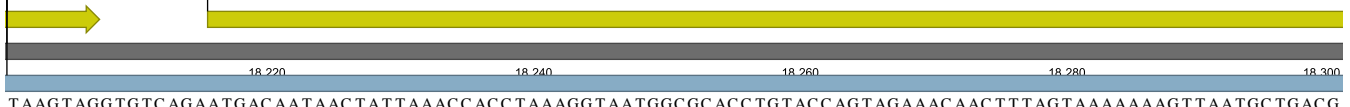
putative distal tail protein
Fragment 2
SA75



putative distal tail protein
Fragment 2
SA75



putative distal tail protein
Fragment 2
SA75



putative tail associated lysin
Fragment 2
SA75



GTGTATTAAC TTTGATATCTAGAAAATAAATATAC TTATGAAGTTATTAACGC TATAGGGAAAAGATGGAT TGTTAGTCATGTCGAAGGTGAAAACGA

putative tail associated lysin
Fragment 2
SA75



CAAGAAAGAATATGTAATAACTGTCATTGATAGGAAATCAGAAGGCGACAGACAAC TGGTTGAATGTACTGCTAGAGAGATTCC TATAGACAAGTTAATG

putative tail associated lysin
Fragment 2
SA75



ATTGATAGGATTTATGTTAATGTAACAGGATCTTTTACAGTAGAAAGATATTTTAAACATTGTGTTTCAAGG TACTGGAATGC TTTTGAAGTCGAAGGTA

putative tail associated lysin
Fragment 2
SA75



AGGTTAAGTCTTCGAAGTTGAAAATGGTGGTGAAGGCGACACAAGGTTAGAAATGTTTAAAAAGGGATTAGAACATTCGGTTTAGAATATAAAATAAC

putative tail associated lysin
Fragment 2
SA75



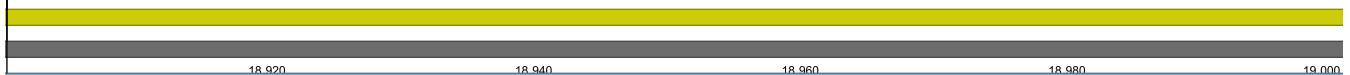
GTATGACAAAAGAAAGACAGATATAAGTTTGTATTGACGCC TTTTGC AAATCAAAAAGCGTCTTATTTTATTCTGACGAAGTCAACGCCAACGCTATA

putative tail associated lysin
Fragment 2
SA75



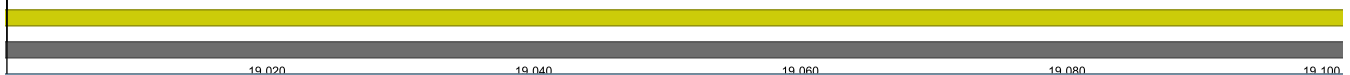
AAACTTGAAGAAGATGCAAGTAATTCGCCACCTTCATTAGAGGTTACGGGAGTTATTCAGGCGAAGAAACATTCGAACACGCCGGGCTCGTAATGGAAAG

putative tail associated lysin
Fragment 2
SA75



CTAGAAGTGCAATTAGCTGAGATATACGGTGATATCCACGCAGAACCATTTAAAGATGGTAAAGTGACTGACC AAGAACTATGGATAAAGAATTGCAATC

putative tail associated lysin
Fragment 2
SA75



AAGATTGAAAAGGTCATTAACAACATCTTTGCTTTTGACTTTTGGTGTAAAGAGAAGCTTATCC TGAAGCAGACCCACAACCCGGTGACATAGTACAA

putative tail associated lysin
Fragment 2
SA75



GTA AATCTACTATTTTAGGACTTAACGACCTAGTACGTATAGTAGAGATCAAACTATTAGAGATATAAAC AATGTAATTGTTAAGCAAGACGTAACAC

putative tail associated lysin
Fragment 2
SA75



TTGGTGAATTC AATAGAGAAC AACGATATATGAAAAAAGTTA AACTGCAGCTAAC TATGTTTCTGGATTA AACGATGTTAATCTTCTAATCCTAGTAA

putative tail associated lysin
Fragment 2
SA75



AGCGGCAGAAAAC TTGAAGTCTAAAGTAGCGTCAATAGCTAAATCAACACTCGATTTGTATGAGTAGAAC TGATTTGATTGAAGATAAACAGCAGAAAAGT

putative tail associated lysin
Fragment 2
SA75



AGCTCTAAAAC TGTAAC TACATCTGACGGC ACTATTGTTTCATGATTTTATAGATAAATCAAACATTAAAGATGTAAAAACAATTGGAACGATTGGCGATT

putative tail associated lysin
Fragment 2
SA75



CTGTAGCTAGAGGGTCGCACGCAAAAAC TAATTTACAGAAATGTTAGGCAAGAAGTTAAAAGCTAAAACGACCAACCTTGC AAGGGTGGCGCTACAAT

putative tail associated lysin
Fragment 2
SA75



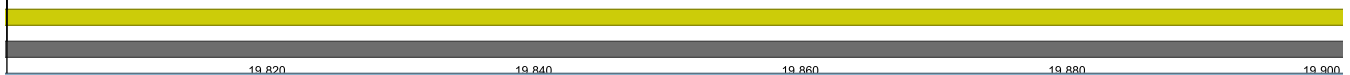
GGCGACAGTCCCTATAGGAAATGATGCAGTTGAAAATAGTATATATCGTCAAGCTGAACAAATAAAAGGAGACTTGATTATCGTTCAAGGTACTGATGAT

putative tail associated lysin
Fragment 2
SA75



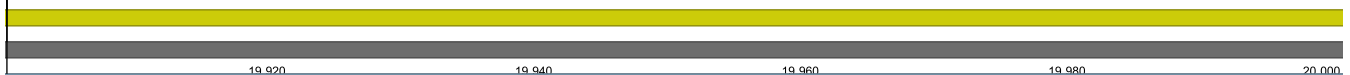
GACTGGTTACACGGTTATTGGGCAGGTGTACCTATAGGCAC TGATAAACGGATACTAAAAC TTTTACGGTGCC TTTTGTTCGCAATTGAAATTATTA

putative tail associated lysin
Fragment 2
SA75



GAAAGAATAATCCGGACTCAAAAATACTAGTGATGACAGCTAC AAGACAATGTCC TATGGATGGC ACTAAAATACGCCG TAAAGACACGGATAAAAAATAA

putative tail associated lysin
Fragment 2
SA75

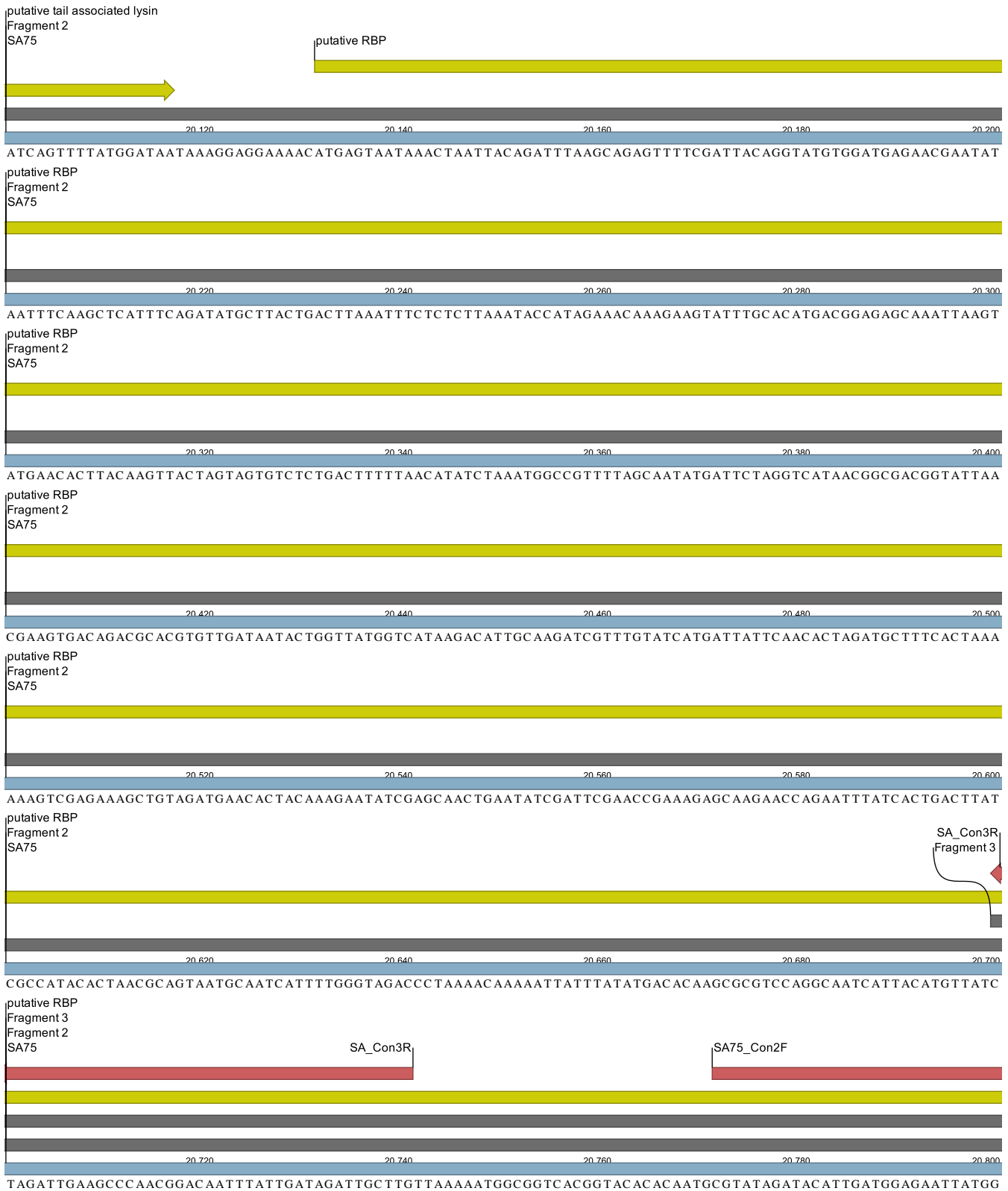


ATTAGGGTTAACACTTGAAGACTATGTAATGCTCAAGTTTGGCTTGCAGTGAATTAGACGTGCC TGTATATGATGCATATCATACAGACTATTTCAA

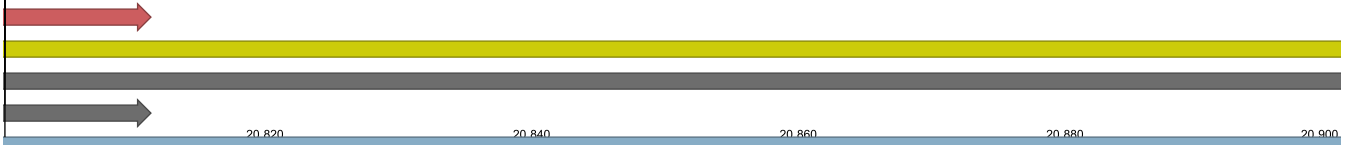
putative tail associated lysin
Fragment 2
SA75



CCTTATAATCC TGCATTTAGAAAATCCAGCATGCC TGACGGTTACATCCGAATGAACGAGGTCATGAAGTTATTATGATGAAC TTATTA AAAATTATT



SA75_Con2F
putative RBP
Fragment 3
Fragment 2
SA75



ATTTATTCAGCTGTATTGGACAGTAACAAAAACAACAAGTTTGTACGTTTCCAATATAGAAGCTGGAGAAATAACTTATGGTAATGAAATGCAAGATGTCA

putative RBP
Fragment 3
SA75



TGCCGAATATATTTAACGACAGATATACGTCAGCGATTTATAATCCGGTAGAAAATTTAATGATTTTAGACGTGAATATAAACCCACTGAAAGACAACT

putative RBP
Fragment 3
SA75



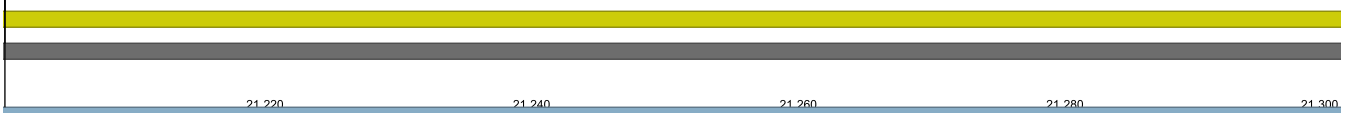
TAAGAATTCGTTGAACTTGTGAGGTTAGAAGTGCAGCATATTGATAAAGGTATAGACAAAGTATTGTATCAAATGGATATACCTATGGAATACACT

putative RBP
Fragment 3
SA75



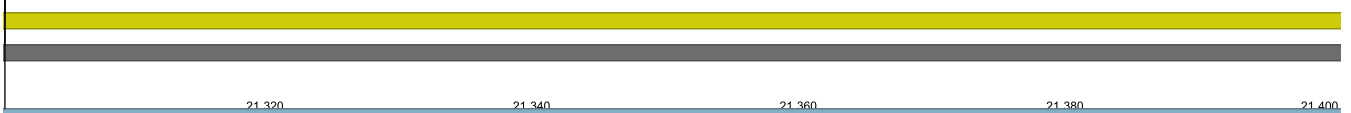
TCAGATACACAACCTATGCAAGGTATCACTTATGATGCAGGTATCTTATATTGGTATACAGGTGATTCGAATACAGCCAACCTAACTACTTACAAGGTT

putative RBP
Fragment 3
SA75



TCGATATAAAAACAAAAGAATTGTTATTTAAACGACGTATCGATATTGGTGGTGAATAATAACTTTAAAGGAGACTTCCAAGAAGCTGAGGGTCTAGA

putative RBP
Fragment 3
SA75



TATGTATTACGATCTAGAACAGGACGCAAGCGCTTTTAATAGGGGTAACTATTGGACC TGGTAAC AACAGACATCACTCAATTTATTCCATCGGCCAA

putative RBP
Fragment 3
SA75



AGAGGTGTTAACCAATTC TTA AAAAACATCGCACCTCAAGTATCAATGACTGATT CAGGCGGACGTGTTAAACCGTTACCAATACAGAACCCAGCATATC



Fragment 3
BppU family baseplate upper protein
SA75

SA75_delR3



22 320 22 340 22 360 22 380 22 400

CAATTGATGGGCGTTTGCAGTATGTGATACCGAATGAATTTTAAAACATTCGGGTAAGGTGCATGCTCAAGCATCTTTACACAAAATGGGAGTAATAA

Fragment 3
BppU family baseplate upper protein
SA75

22 420 22 440 22 460 22 480 22 500

TGTTGTTGTTGAACGTC AATTTAGCTTCAATATCGAAAAATGATTTAGTTAGTGGGTTTGATGGTATAACAAAGCTTGTTTATATCAAATCTATTC AAGAT

Fragment 3
BppU family baseplate upper protein
SA75

22 520 22 540 22 560 22 580 22 600

ACTATCGAAGCTGTCGGTAAAGACTTTAACC AATTAAGCAAAAATATGGCTGATACACAAACGTTAATAGCAAAAGTG AATGATAGTGCACAAAAGGCA

Fragment 3
BppU family baseplate upper protein
SA75

22 620 22 640 22 660 22 680 22 700

TTCACAAAATCGAAATCAAGCAAAACGAAGCTATAC AAGCTATTACTGCGACGCAAACTAGTGCAACACAAGCTGTTACAGTG AATTCAGTAAAAATAGT

Fragment 3
BppU family baseplate upper protein
SA75

22 720 22 740 22 760 22 780 22 800

TGAAAAGGAGCAAGCGATATTTGCGCGTGTC AATGAAGTTGAGAAACAATCAATGGTGC TGACCTTGTC AAAGGTAACAACAACGACAAAATGGCAAAA

Fragment 3
BppU family baseplate upper protein
SA75

22 820 22 840 22 860 22 880 22 900

TCAAAAATTACTGATGATTATGGTAAAGCAATG AATCGTCTGAACAGTCCATAGATAGCGTTTTAAGCGCAATTAATACATCTAGGATTATTCATATCA

Fragment 3
BppU family baseplate upper protein
SA75

22 920 22 940 22 960 22 980 23 000

CTAGCGCGACAGATGCGCCCTCGTTTAAAGATATAGGC ACTTTAGAGACGCCTAAAGAAGATGGCGTTGATGATGGTTCGAAGTTTCAGCAACTACGAA

Fragment 3
BppU family baseplate upper protein
SA75

23 020 23 040 23 060 23 080 23 100

TACTTTAGGGAAATCAGGCTTGTTAGTTGTC TATGTTGTTGATGATAGTACGGCACGTGCAACATGGTATCCAGACGATTCAAAATGATGAGTACACAACA

Fragment 3
BppU family baseplate upper protein
SA75

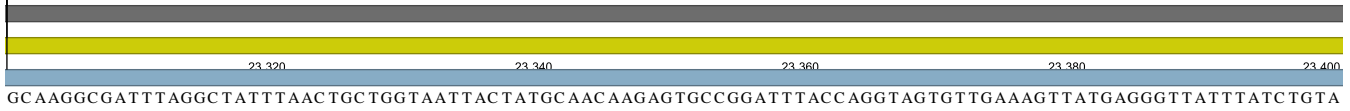
23 120 23 140 23 160 23 180 23 200

TATAAAATCGGTGGCACATGGTATCAGTTC TATAAAAAAGTTGACGAAGAATTAACGAAGA AATTTGTTAAAGAAACATCTAAC AATGCTTTAAATCAAG

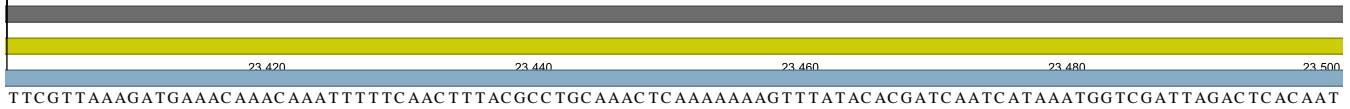
Fragment 3
BppU family baseplate upper protein
SA75



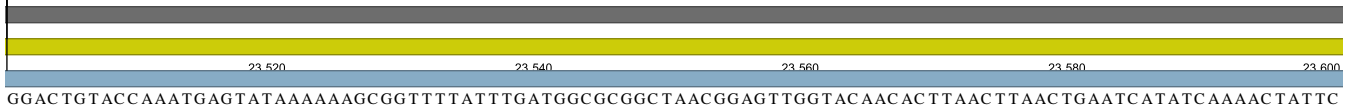
Fragment 3
BppU family baseplate upper protein
SA75



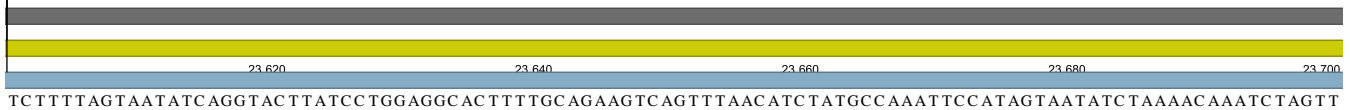
Fragment 3
BppU family baseplate upper protein
SA75



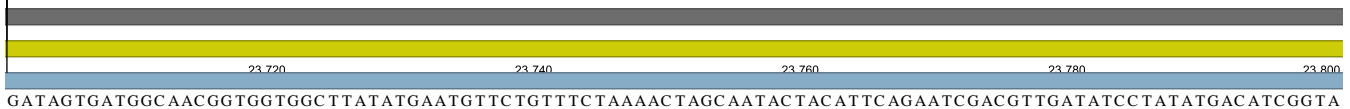
Fragment 3
BppU family baseplate upper protein
SA75



Fragment 3
BppU family baseplate upper protein
SA75



Fragment 3
BppU family baseplate upper protein
SA75



Fragment 3
BppU family baseplate upper protein
SA75



Fragment 3
BppU family baseplate upper protein
SA75



Fragment 3
BppU family baseplate upper protein
SA75



Fragment 3
BppU family baseplate upper protein
SA75



Fragment 3
BppU family baseplate upper protein
SA75



hypothetical protein
Fragment 3
SA75



TCACAAACGGAGAAATTAATACACAATAATTCGAAAAAGAAGATGATTGAAACACACCAGGACAAACAACTGCATCGGATTGAGTGACGAGGAAC

hypothetical protein
Fragment 3
SA75



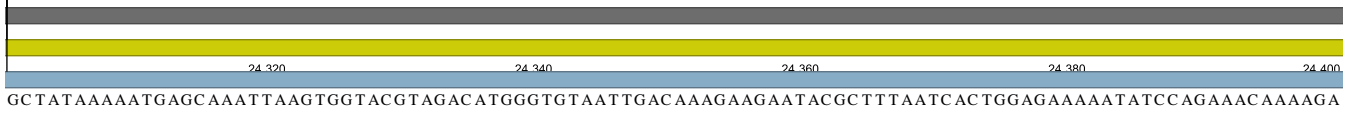
TCGCAGCATGGTTGCGAGTATGCAAAATGCAGATGACGCAAGTGAACATGTTGACAAATGAAATTGACGCAACAAAACGCTATGTTAACACAACAGTTGACC

hypothetical protein
Fragment 3
SA75



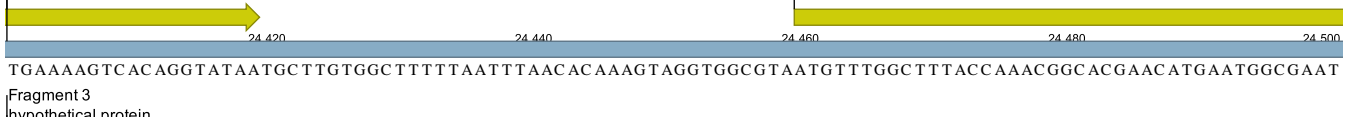
GAACTGACAACTAACAAAACAAATACTGAGGGGGACGTTTAAATGATGAAGATGATTTATCCAACTTTAAAGACATTAACATTTTTATGTTGGGGTT

Fragment 3
hypothetical protein
SA75



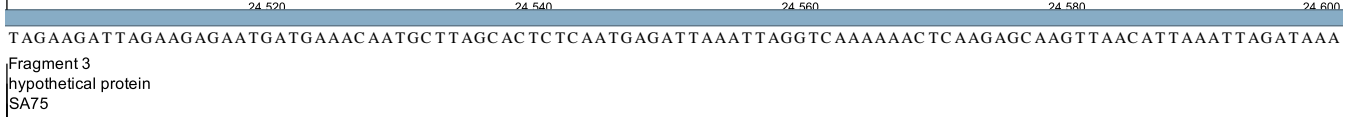
GCTATAAAAATGAGCAAATTAAGTGGTACGTAGACATGGGTGTAATTGACAAAGAAGAATACGCTTTAATCACTGGAGAAAAATATCCAGAAACAAAAGA

Fragment 3
hypothetical protein
SA75



TGAAAAGTCACAGGTATAATGCTTGTGGCTTTTAAATTAACACAAAGTAGGTGGCGTAATGTTTGGCTTTACCAAACGGCACGAACATGAATGGCGAAT

Fragment 3
hypothetical protein
SA75



TAGAAGATTAGAAGAGAAATGATGAAACAATGCTTAGCACCTCAATGAGATTAATTAGGTCAAAAAATCAAGAGCAAGTTAACATTAATTAGATAAA

Fragment 3
hypothetical protein
SA75



ACTTTAGATGCTATCCAGAGGAAAAGACAGATAGACGAAAAAAATAAGAAAGAAAACGACAAAAATATACGTGATATGAAAATGTGGATTCGCGTTTGG

Fragment 3
hypothetical protein
SA75



TAGGGACTATCTTTAGTACGATTGTCATAGCCTTAATAAGAACCATTTTCGGTATTTAAAGGAGGTGATCACCATGCTTAAAGGATTCCTCGGATATAGT

Fragment 3
lysine
SA75

24.820 24.840 24.860 24.880 24.900

TTC TGGGCATGC TTC TGGTTTGGTAAATGTAAGTAATGTATAGGAGTCAGTGC TAAGGCAC TGGCTTTTATTTTGATTGAAATGAGGTGCATACATGGG

Fragment 3
lysine
SA75

24.920 24.940 24.960 24.980 25.000

ATTACCTAATCCAAAGACTCGAAAACCTACAGCTAGTGAAGTGGTTGAATGGGCGTTATATATCGCTAAAAACAAAATAGCTATTGATGTACCTGGTTCT

Fragment 3
lysine
SA75

25.020 25.040 25.060 25.080 25.100

GG AATGGGAGCACAATGCTGGGATTACCTAATTATTTACTCGATAAAATATGGGGGTTTAGAACAATGGGGAATGCTGATGCTATGGCTCAGAAAATCTA

Fragment 3
lysine
SA75

25.120 25.140 25.160 25.180 25.200

ATTATAGAGGTAGAGATTTCAAGATAATTAGAAAATACAAAAGATTTTGTACCACAACCAGGCGACTGGGGTGTTTGGACTGGTGGTTGGGCAGGACATGT

Fragment 3
lysine
SA75

25.220 25.240 25.260 25.280 25.300

AAACATGTAGTGGGACCATGCACAAAAGACTATTGGTATGGTGTGGATC AAAACTGGTATACAAAATAATGCAACAGGAAGTCCGCCGTAAAAATCAAA

Fragment 3
lysine
SA75

25.320 25.340 25.360 25.380 25.400

C ACTCTTATCATGATGGACAGGTGGAGGAGTTAAATATTTTGTAGACCACCATATCATCCGGAGAAATCTACGCCGGCACCTAAACCCGAAGACGACA

Fragment 3
lysine
SA75

25.420 25.440 25.460 25.480 25.500

GTGATAATAACGAAAAAATAATAAAAAAGTTCCGATTTGGAAAGATGTAACAACATAAAGTACACAATTTCTAGTCAAGAAGTTAATTATCCAGAATA

Fragment 3
lysine
SA75

25.520 25.540 25.560 25.580 25.600

TATTTATCATTATAGTAGAGGGTAATCGACGACTCGAAAACCTAAAGGAATAATGATTAGAAATGCTCAAACAATGAGTTTCAGTAGAAAATTTATAT

Fragment 3
lysine
SA75

25.620 25.640 25.660 25.680 25.700

AACAGTAGGAAGAAATACAAACAAGATGTGGAATATCCCCACTTTTATGTAGATAGACATAATATTTGGGCTCC TAGAAGAGCGGTATTTGAGGTTCCTA

Fragment 3
lysin
SA75

25.720 25.740 25.760 25.780 25.800
ATGAACCTGATTATATAGTTATAGACGTATGTGAAGATTATAGTGCAGTAAAAACGAATTATTTTCAATGAAATTCACGCAATGGTTGTAGCTGTAGA

Fragment 3
lysin
SA75

25.820 25.840 25.860 25.880 25.900
TATGATGATCAAATATGAGATACCTCTAAGTATTGAAAAATTTAAAAGTAGACGACAGCATTGGCGTTCTATGTTGGAACATGTTAATTGGAATATGATT

Fragment 3
lysin
SA75

25.920 25.940 25.960 25.980 26.000
GACAACGGTGTTCCTCCCTAAAGATAAATACGAAGCATTAGAAAAGGCATTATTTAATATATTTAAAAACAGAGAAAAATTTAATAATTCATAACATAAC

Fragment 3
lysin
SA75

26.020 26.040 26.060 26.080 26.100
CAACAGTAACAAAATCTAGAATAAAAGTTATGGTAGATAATAAAAACGCTGATATAGCGAATGTAAGAGACTCATCACCAACAGCTAAC AATGGCTCGGC

Fragment 3
lysin
SA75

26.120 26.140 26.160 26.180 26.200
ATCTAAACAACCGCAGATTATAAC TGAACGAGCCCTTATACATTC AAACAAGC ACTGGATAAACAAATGGCAAGAGGTAAACCGAAAAAATCTAATGCT

Fragment 3
lysin
SA75

26.220 26.240 26.260 26.280 26.300
TGGGGCTGGGCTAACGCTACACGAGCTCAAACGGGCTCGGC AATGAATGTTAAACGAATATGGGAAAGTAACACGCAGTGTACCAATGCTTAATTTAG

Fragment 3
lysin
SA75

26.320 26.340 26.360 26.380 26.400
GCAAGTATCAAGGTGTTTCAGTTAGTTTACTTAATAAGATAC TTAAGGTAAGGGGACATTGAATAATCAAGGTAAGCGTTTCGCAGAAGCTTGTA AAAA

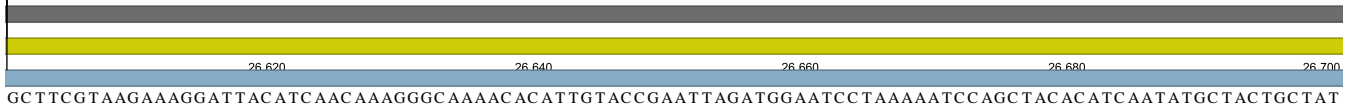
Fragment 3
lysin
SA75

26.420 26.440 26.460 26.480 26.500
GCACAACATTAATGAAATTTATTTAATCGGCATGCTTCTTAGAAAAGTGATATGGAAC AAGTAAC TTCGCTAACGGAAAAAGTGGAGTATACAAC TAC

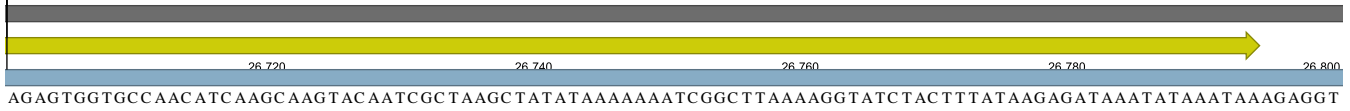
Fragment 3
lysin
SA75

26.520 26.540 26.560 26.580 26.600
TTCGGCATTGGCGTTACGACAAC AATCCTAACTACGCAATGACGTTTGTAGGAATAAAGGTTGGACATCTCCAGCAAAAGCAATCATGGGCGGTGCTA

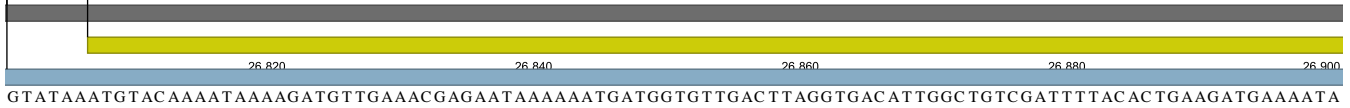
Fragment 3
lysine
SA75



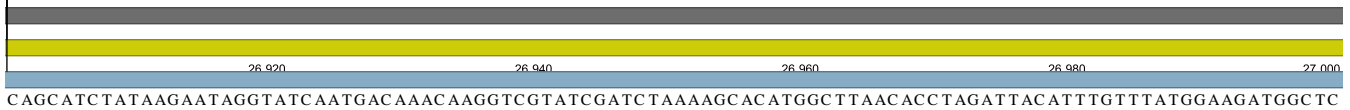
Fragment 3
lysine
SA75



Fragment 3
SA75 hypothetical protein



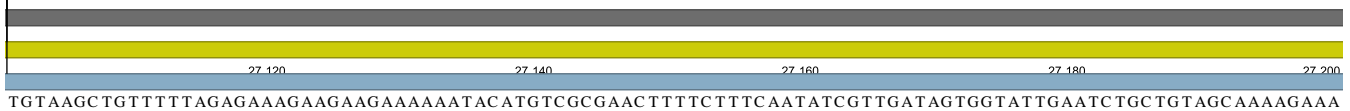
Fragment 3
hypothetical protein
SA75



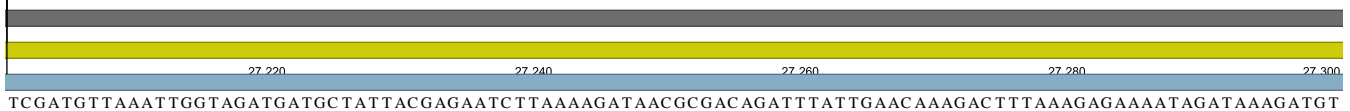
Fragment 3
hypothetical protein
SA75



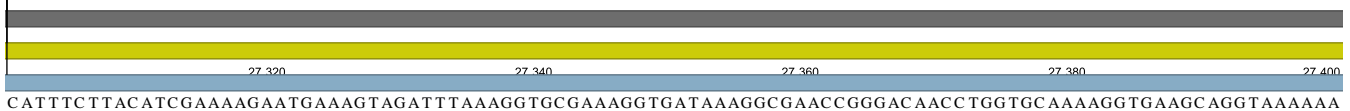
Fragment 3
hypothetical protein
SA75



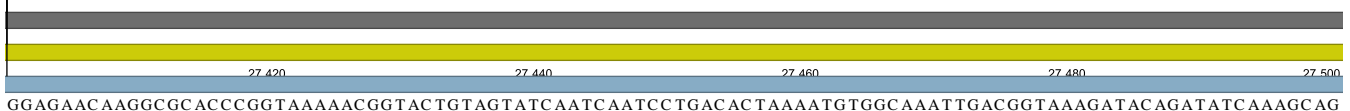
Fragment 3
hypothetical protein
SA75



Fragment 3
hypothetical protein
SA75



Fragment 3
hypothetical protein
SA75



Fragment 3
hypothetical protein
SA75



AACCTGAGTTAT TGGATAAAATCAATATCGCAAATGTTGAAGGGTTAG AAGATAAAT TGC AAGAAGT TAAAAAATCC AAGATACA ACTC TCAACGACTC

Fragment 3
hypothetical protein
SA75



TAAAACGTATACGGATTC AAAAAT TGCTGAACTAGTTGATAGCGCGCCTGAATCTATGAACACATT AAGAGAATTAGCAGAAGCAATACAAAACA ACTCT

Fragment 3
hypothetical protein
SA75



ATTTCAGAAAGTG TATTGCAACAGATTGGCTCAAAGTTAGTGCAGAAGATTTTGAGGAATTC AAACAACAC TAAATGATTTATACGCTCCAAAAAATC

Fragment 3
hypothetical protein
SA75



ATAATCATGACGAGCGGTATGTTTTGTCATCTCAAGCTTTTACTAAACAACAAGCGGATAATTTATATCAACTAAAAGCGCATCTCAACCGACGGTTAA

Fragment 3
hypothetical protein
SA75



AATTTGGACAGGAACAGAAAATGAATATAACTATATATATCAAAAAGACCC TAATACACTTTACTTAATTAAGGGGTGATTTTTATGGAAGGTAATTTTA

Fragment 3
hypothetical protein
SA75



AAAATGTAAAGAACTTATTTACGAAGGCGAAGAATATACAAAAGTATATGCTGGAAATATCCAAGTATGGAAAAAGCCTTCATATTTTGTAAATAAAC

Fragment 3
hypothetical protein
SA75



CTTACCTAAAAATAAATATCCGGATAGCATAGAAGAAATCAACAGCAAAAATGGACAATAAATGGAGTTGAACCTAATAAAAGTTATCAGGTGACAATAGAA

Fragment 3
hypothetical protein
SA75

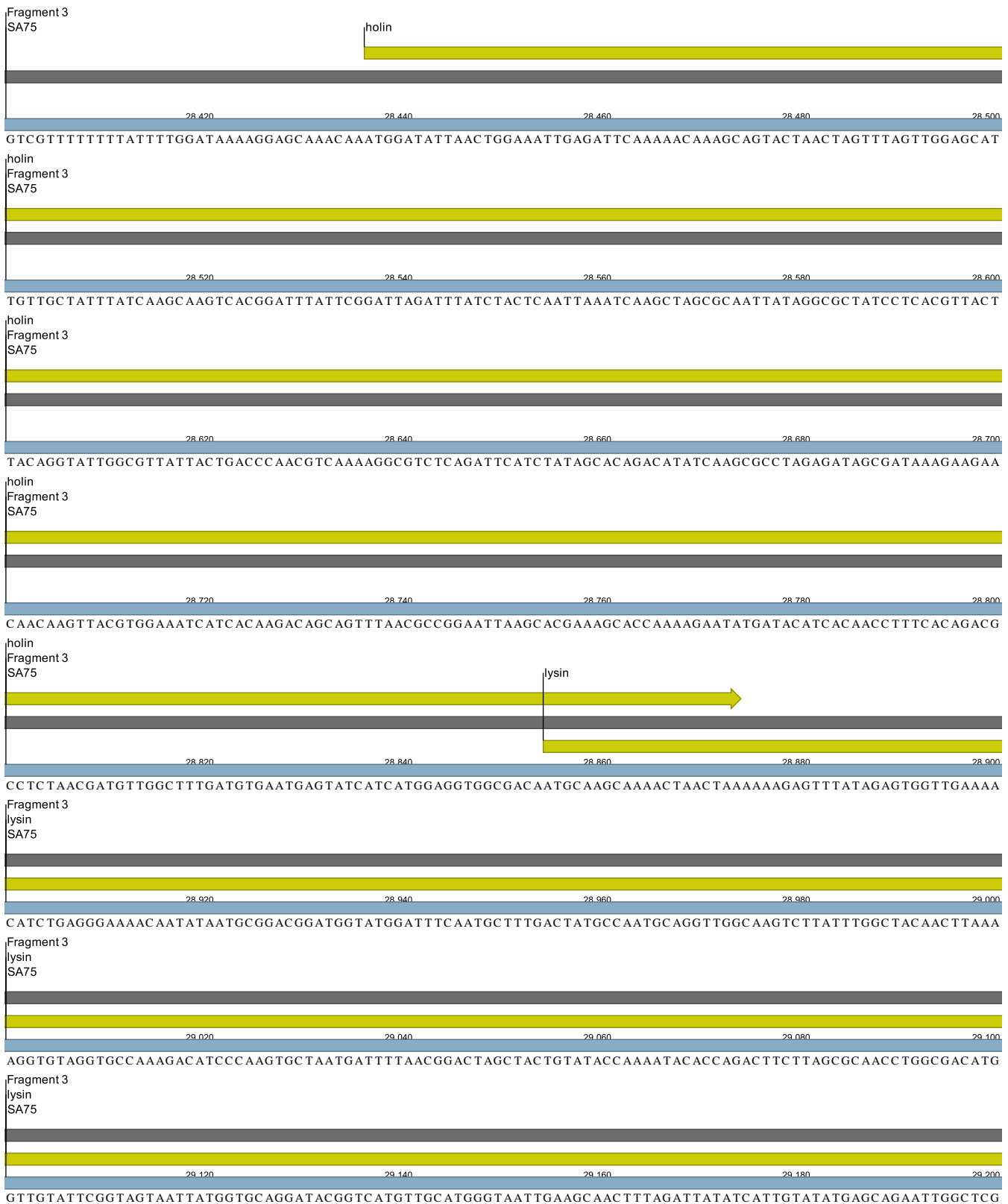


AATGTACGTAGCGGTATAATGAGGATTTTCGCAAACTAATTTAGGTTCAAGTGAATTAGGAATATCAGGAGTCAATAGCGGAGTTGCAAGTAAAAATATCA

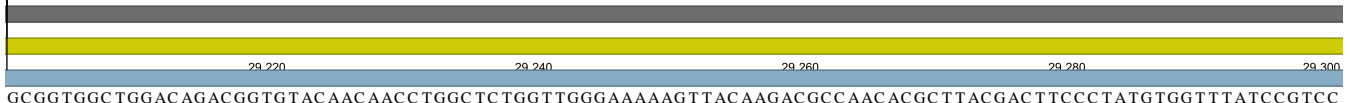
Fragment 3
hypothetical protein
SA75



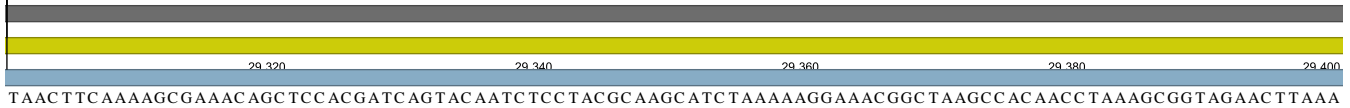
ACTTTAGTAATCCTCAGGGACGTTGTATGTCACATAAGTGATGTTTATTCAGGATCTCCGACATTGACCATTGAATAATTTTAAACGACTAATTTTAA



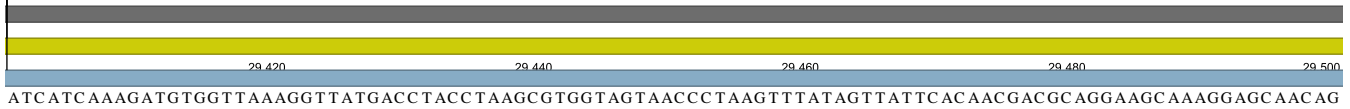
Fragment 3
lysin
SA75



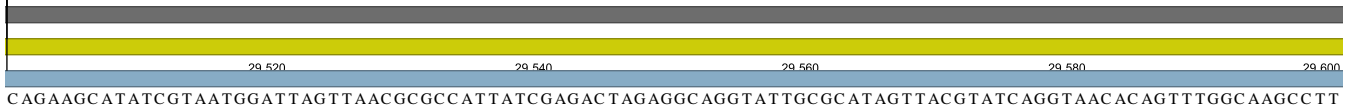
Fragment 3
lysin
SA75



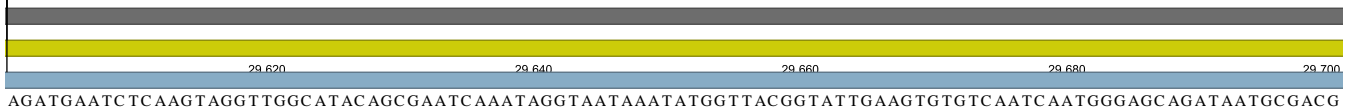
Fragment 3
lysin
SA75



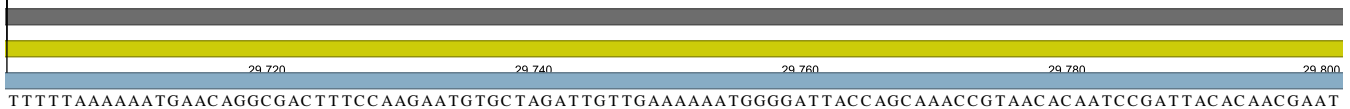
Fragment 3
lysin
SA75



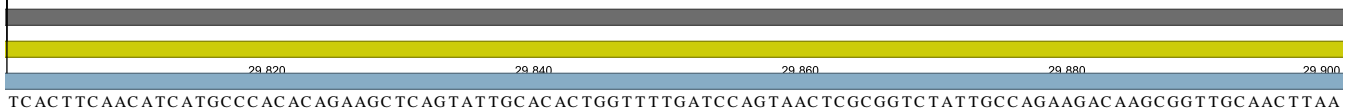
Fragment 3
lysin
SA75



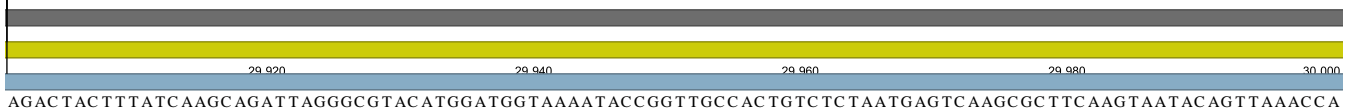
Fragment 3
lysin
SA75



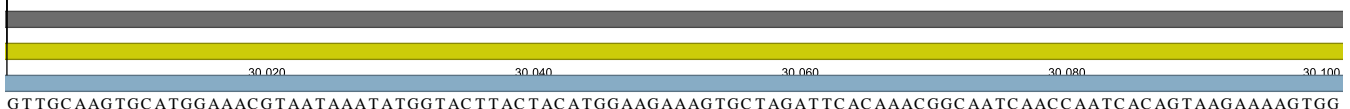
Fragment 3
lysin
SA75

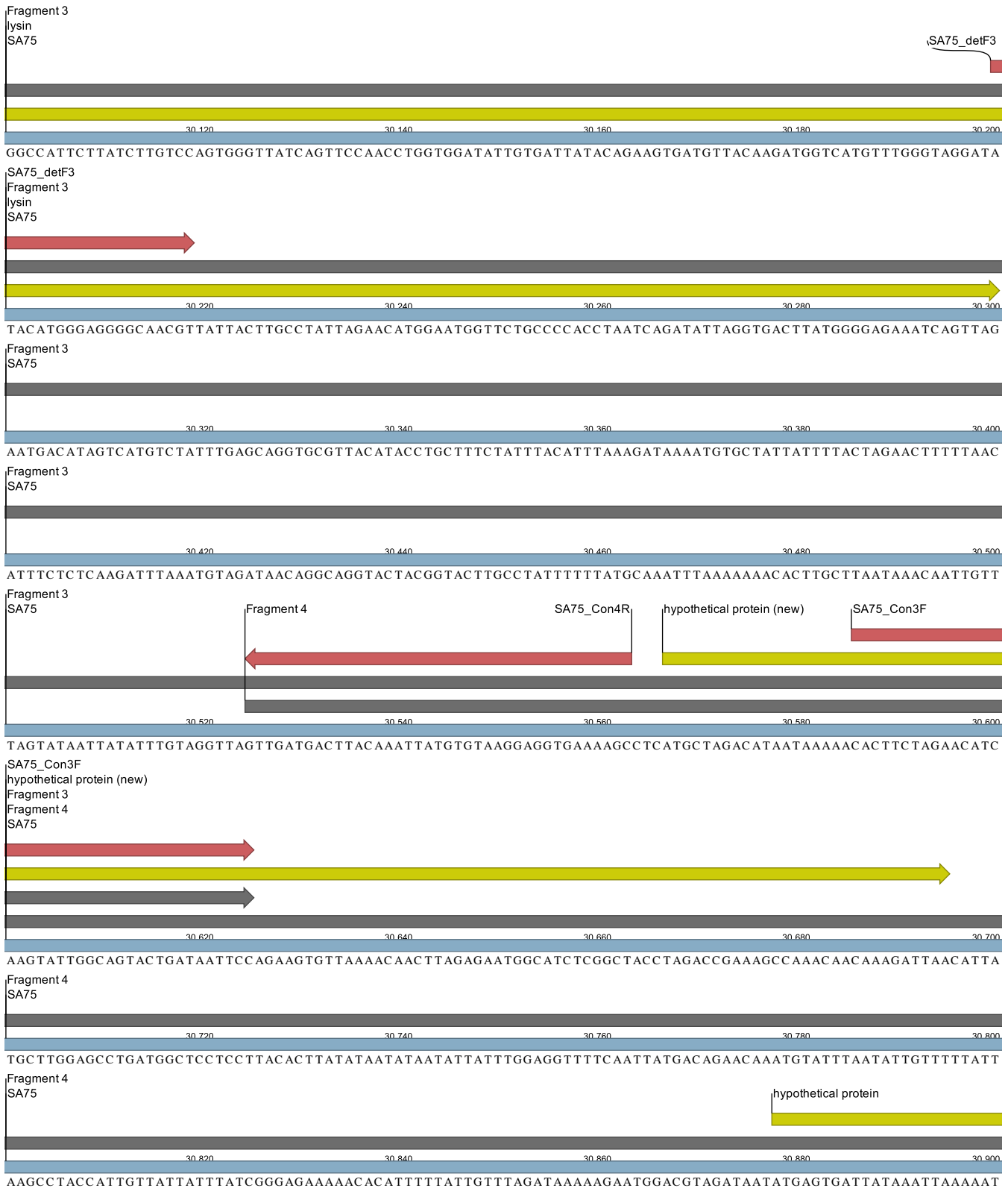


Fragment 3
lysin
SA75



Fragment 3
lysin
SA75







Fragment 4
SA75 integrase

31 820 31 840 31 860 31 880 31 900

TGGTTTTTCGATTTTATATGATGTTAAATCAAATTGTTTTAGATAAATTGTAAAATTGTTTTAAAACC TCGCCTTCGTCGATGTTACATGCATTTTTATTTT

Fragment 4
SA75 integrase

31 920 31 940 31 960 31 980 32 000

TAGTATTTTGCAGTTAGAACAAAAGTATAGTTTAGAATACCAAACCTCTTTATTTTAGGCGTATGCTTGACTGTGTTAAAGTCAATTTCTGGTTACA

Fragment 4
SA75 integrase

32 020 32 040 32 060 32 080 32 100

GTTTGGACATAATAGTTTACTTCTGAAAATAGCGTTATGTTTTACGATTGTAGAGTTAGTTTTTTCACCTTATCCTTAATTTTATTTCTTCGTATTCTTCT

Fragment 4
SA75 integrase

32 120 32 140 32 160 32 180 32 200

TCACTTATAATAGCTTCGTGGGTGTTTTTCGACGAATATGTCACCGAAAACAAGATGACCTCTAGCTACCGGACTCGTTAGAGCATTGCCATAACTGATC

Fragment 4
SA75 integrase

32 220 32 240 32 260 32 280 32 300

TGTGCCAGTTTTTACCTAAGGGTGC TTTGTATTTAGAGTTGTCAATTTATAGTTATTTCTCTTAAACTAGTACCTTTTTTCGCTTCTTCTACTGCAAA

Fragment 4
SA75 integrase

32 320 32 340 32 360 32 380 32 400

TCGTAATACTTTTTTATATTCATTAGGCACAAATTTATCGTTTACTCTGTCGTAATAGAAAGGAGGGACAGTTTTAGCTAACCCTTTTCTAGCTGATGCG

Fragment 4
SA75 integrase

32 420 32 440 32 460 32 480 32 500

CGTCGACCCATTGCAGTACGCTCTTGAATTGTAGTACGCTCCC ACTCTGCCATAGCACCTACTAATGTTACGAACAACGTCCC ATAGCAGAAGTTGTGT

Fragment 4
SA75 integrase

32 520 32 540 32 560 32 580 32 600

CATATACTTCTGTTGCGCTCC TAAACAACACGTTTTTATTTCTCAAACAATTCTAGTATCTCTAGTAAGCTTTAACAAC TTCGAGTTAATCGATCTAGTTT

Fragment 4
SA75 integrase

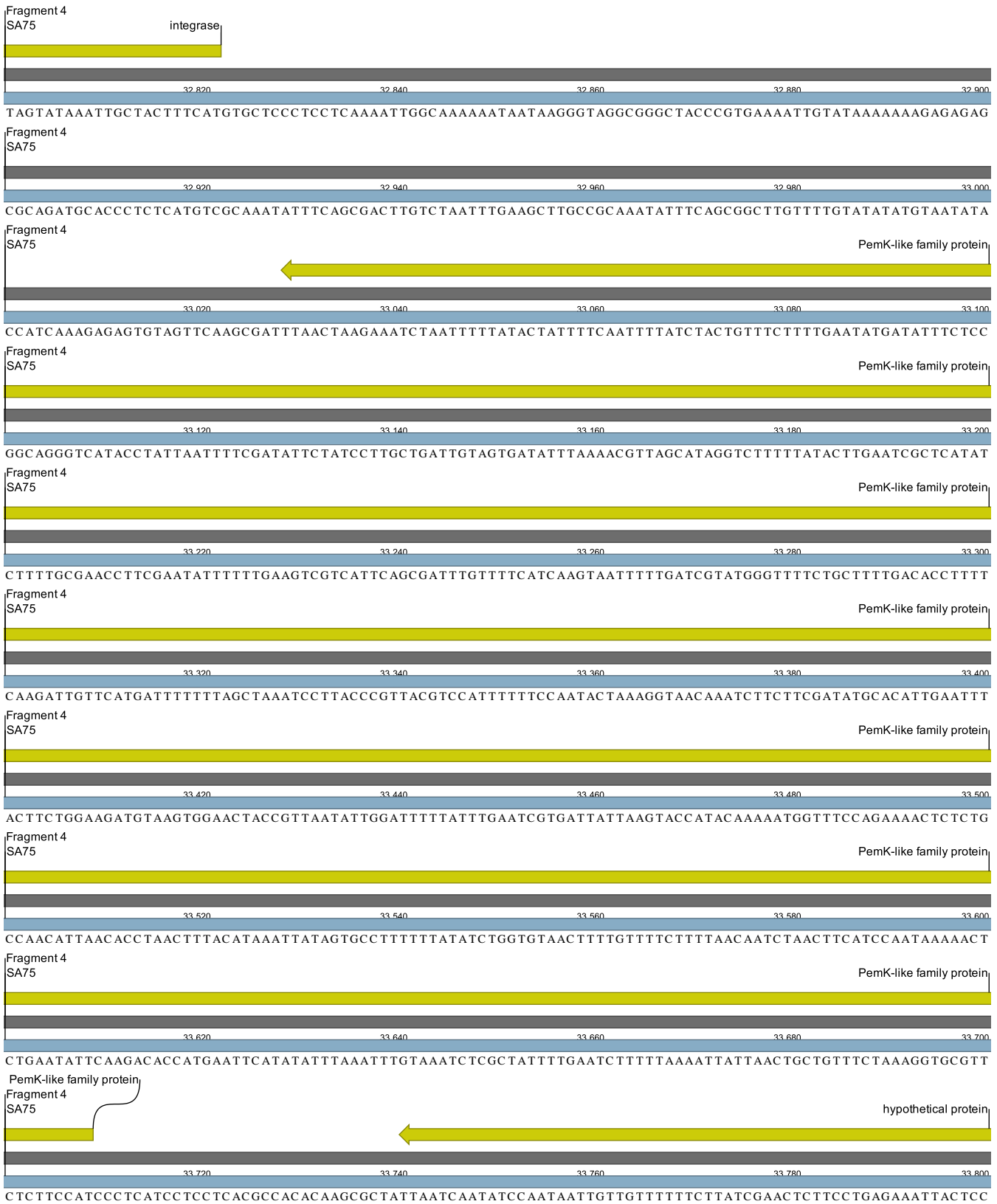
32 620 32 640 32 660 32 680 32 700

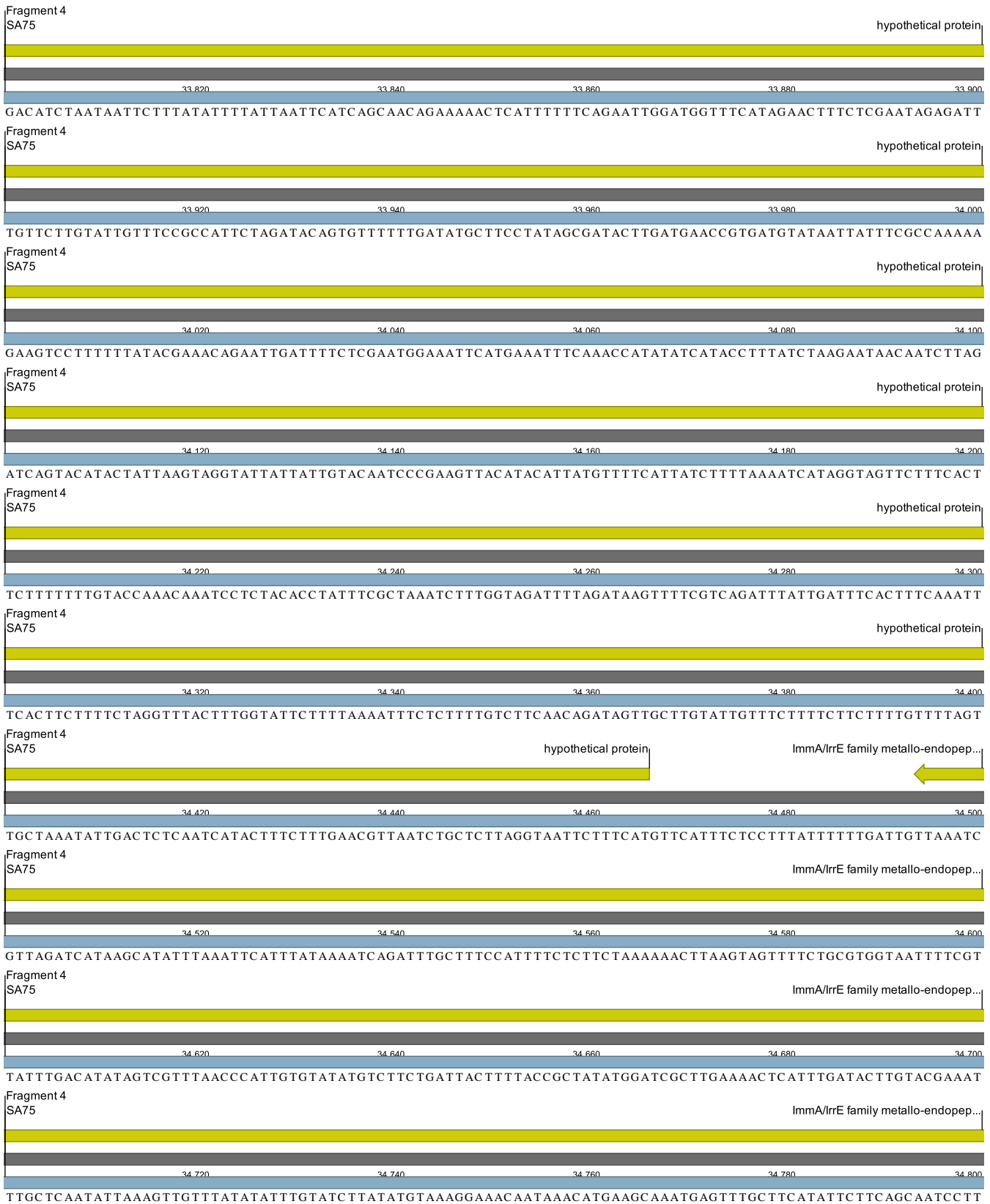
ATAGACTAAAACCAAATCAAATTAATCTATTTTCATTCAACATTTCTTTGTAAAGCGGGTCTGTC TTTTTTAGCTCCGGAGTATCCAGCGTCACTATATACT

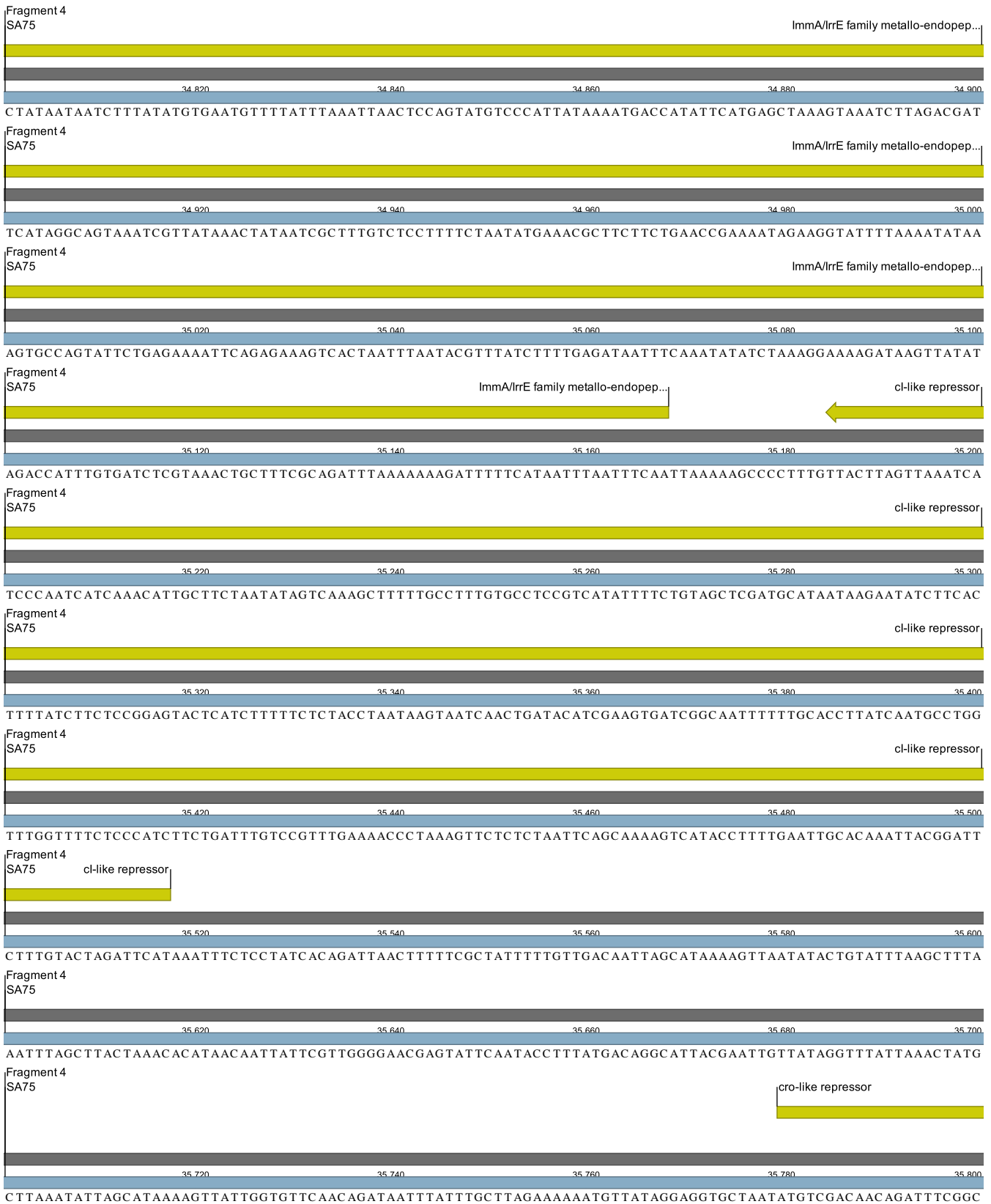
Fragment 4
SA75 integrase

32 720 32 740 32 760 32 780 32 800

TTATGAATTTCCAGTCGTTTATGTCGCTGTAAGCTCTTAATTTCTTTCTTTGTTCTTCGATAGAGTGTCC TTTTCTTTTGTTC AAGTGACTCACTC







cro-like repressor
Fragment 4
SA75



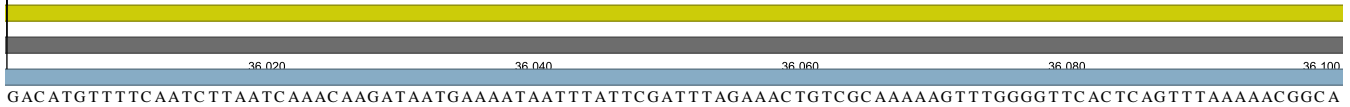
TTGAAAGTGAGAACGGAATTATTAACGC AACATGACAAAC AAGCAACTTGCGGAAATGCTAGAAATTC AAGTGC TACTTATCGGATATTTACGTG

cro-like repressor
Fragment 4
SA75



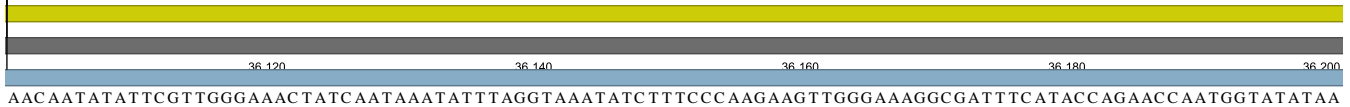
GACGTAGAGATGCTTTTGAACAAAAGAAACGTATTGCGAAAAATTTAGAAATTAAGAAGAGGTGAAGAGTTAATGAATGAAATAAAAC TTTCAGTAAAC

antirepressor protein
Fragment 4
SA75



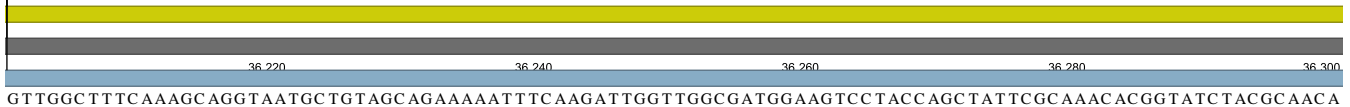
GACATGTTTTCAATCTTAATCAAAC AAGATAATGAAAATAATTTATTTCGATTTAGAAAC TGTCGCAAAAAGTTGGGGTTCAC TCAGTTTAAAAACGGCA

antirepressor protein
Fragment 4
SA75



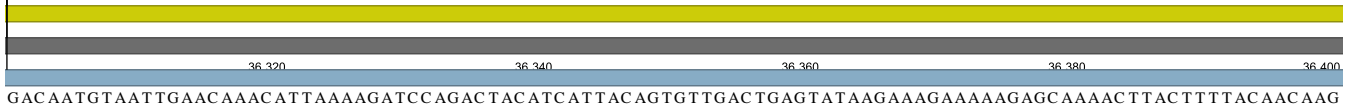
AACAATATATTCGTTGGGAAAC TATCAATAAATATTTAGGTAATATCTTTCCCAAGAAGTTGGGAAAGGCGATTTCATACCAGAACCAATGGTATATAA

antirepressor protein
Fragment 4
SA75



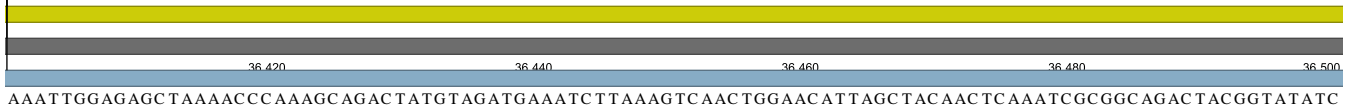
GTTGGCTTTC AAAGCAGGTAATGC TGTAGC AGAAAAATTTCAAGATTGGTTGGCGATGGAAGTCC TACCAGC TATTCGCAACACGGTATCTACGC AACA

antirepressor protein
Fragment 4
SA75



GACAATGTAATTGAACAAACATTAAGATCCAGACTACATCATTACAGTGTGACTGAGTATAAGAAAGAAAAGAGCAAAAAC TTACTTTTACAACAAG

antirepressor protein
Fragment 4
SA75



AAATTGGAGAGCTAAAACCAAAGCAGACTATGTAGATGAAATCTTAAAGTCAACTGGAACATTAGCTACAAC TCAAATCGCGGCAGACTACGGTATATC

antirepressor protein
Fragment 4
SA75



AGCACAAAAGTTAAACAAACTACTACCGAAGCTAGATTACAACGAAAAGTGAATAAACAGTGGGTGCTTTACTCAGAACACATGGGC AAGAGTTACACA

antirepressor protein
Fragment 4
SA75



GAATCAGACACTATAACAATTGTGCGTTC TGATGGCAGAGAAGACACAGTTTTACAAACTAGATGGACACAAAAGGCAGATTGAAAATACATGAAATCA



Fragment 4
SA75

37.620 37.640 37.660 37.680 37.700

TACTATGCTTCACAGTCTTAGCAATTGTGCTTATGCCATTGCTGTACTTCACTACAGCATGGTCAATCGCGGGATTGCAAGTATAGCGACATTCATGTA

Fragment 4
SA75

37.720 37.740 37.760 37.780 37.800

CTACAAAGAATGCTTTTTCAAGAATAAAAAAAGTCTACTTGTGGAGCAAGTAACAGTATCAAACACTTAAGAAAAATTCATGTTCAATATAAAACG

Fragment 4
SA75

hypothetical protein

37.820 37.840 37.860 37.880 37.900

AAAAACGGAGGAAGTCAAGATGTATTACGAAATAGGCCAAATCATACGCAAAAAATTCATGTTAACGGATTCGATTTAAGCTATTCATTTTAAAGGT

hypothetical protein

Fragment 4
SA75

37.920 37.940 37.960 37.980 38.000

CATATGGGCATATCAATACAAGTTAAAGATATGAAC AACGTACCAATTAACATGCTTATGTCGTAGATGAGAATGAC TTAGATATGGCATCAGAC TTAT

hypothetical protein

Fragment 4
SA75

hypothetical protein

38.020 38.040 38.060 38.080 38.100

TCAACC AAGCAATAGATGAATGGATTGAAAAAACAACAGATGAACAGGACAGACTAATTAACCTTAGTCATGAAATGGTAGAGGGGGATTAAC TAATGGCT

hypothetical protein

Fragment 4
SA75

38.120 38.140 38.160 38.180 38.200

AATCTATATGAGCTATCAGAAGCATTAAAGAGTTGCTAATCAAGATGAATTAGACCAAACATTATAAAAGATACATTAGATTCATCCAAGCAGAAA

hypothetical protein

Fragment 4
SA75

38.220 38.240 38.260 38.280 38.300

TGAATGTCAAAGTAGATAACATTGTCAATTGGAGACGTGAAACATTAGGTGACATAGATGTCATAGATAAAGAGATTAAGCGACTTCAAAATTTAAAAA

hypothetical protein

Fragment 4
SA75

38.320 38.340 38.360 38.380 38.400

ACAAAAACAAAATTTAAC TGATCGATTTAAAAGATTACTTAAAAGAGATGTTAGAAACACAGGAAGTAGATAGTTACCGCACAGCTACTAATCATATTAC

hypothetical protein

Fragment 4
SA75

38.420 38.440 38.460 38.480 38.500

AAGCGCAAAAACGGGGCTAGTAAAAATATTATCGATGAAAAACTTATTCCAAAGGATTATTGGCTATCACAAAGCCCGAAACTTAATTCTAAGCAACTAA

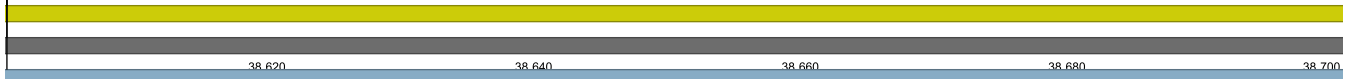
hypothetical protein
Fragment 4
SA75

ERF family protein



TCGATGATTTGAAAGCTGGGAAAGATATTC CGGCGTTGAAT TAAAGGTAACAGAAAGTC TGGTGATTAAGTGATGAATAAATCGGAAAC AGTTGTTGAA

ERF family protein
Fragment 4
SA75



ATAAATAAAGCTATGGTTGCGTTTCGTAAGAAGTAAACAACCGCTCAAAGATAAAAATAATCCATTTTTCAAATCAAAATACGTACCTCTTGAGAACG

ERF family protein
Fragment 4
SA75



TTGTAG AAGCCATTGACGAGGCGGC AACACCTCATGGACTCTCTTATAC TCAATGGCTTTGAACGATGTAGACGGGC GCGTGGGAGTCGC TACAATGCT

ERF family protein
Fragment 4
SA75



TATGCATGAAAGCGGTGAATATATCGAGTATGATCCTGTATTTATGAATGCAGAAAAGAATACGCCACAAGGCGCAGGCTCGTTAATCAGCTACCTTAAA

ERF family protein
Fragment 4
SA75



CGTTATTCGCTATCTGCGATTTTCGGTATTACTAGTGATCAAGACGATGATGGAATGAAGCAAGTGGAAAAATAAT AATCCAAAACAACAAACTAGAA

ERF family protein
Fragment 4
SA75



CGCAATGGGC AAGTAGCGAAACTATAGGGATTTAAGGAAAGAGGTTATAAGTTTCTACTAAATTGATAAAGGGCACGGATAAAGAAGCTCCACAAAATAT

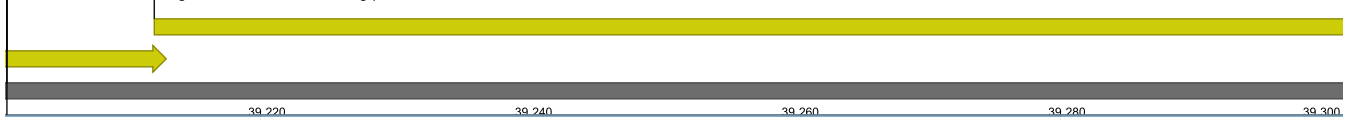
ERF family protein
Fragment 4
SA75



AGTAGAACAAAAATTCGACATAAATAACTATAAATTAACAGAAAAAC AAGCAGCAGAAGCTATTCAAAAATTACGAAAC AACGC AAAAAC AATTACCGGA

ERF family protein
Fragment 4
SA75

single-stranded DNA-binding protein



GGAAAACAATAATGTTAAACAGAACAGTATTAGTAGGACGCTTAACAAAAGATCCAGAATATAGAACAGCGCCAAATGGTGTGAGTGTTACCACTTTCAC

single-stranded DNA-binding protein
Fragment 4
SA75



TATCGCAGTTAACAGAACATTTACTAACGC TCAAGGAGAACGTGAGGCAGACTTTATTAAC TGTGTAACTTTAGAAAAC AAGCAGAAAAATGTAAATAAT

single-stranded DNA-binding protein
Fragment 4
SA75



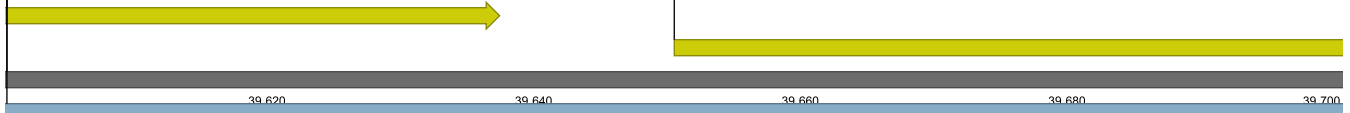
TATTTATCCAAAGGGTCATTGGCTGGCGTTGATGGACGTTTACAATCACGCAGTTATGAAAACAAAGTCGGGCAACGTGTGTTTGTACAGAAGTAGTAG

single-stranded DNA-binding protein
Fragment 4
SA75



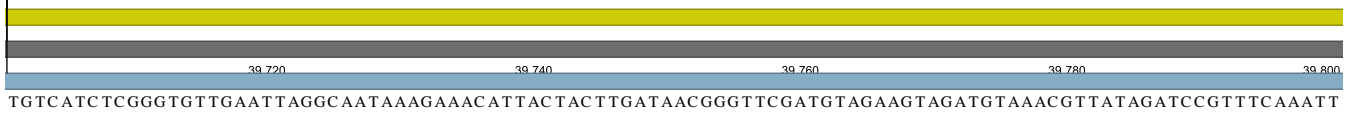
CGGACAGTGTTCAATTC TTAGAACC GAAGAATAGCAACCAAC AACAAAATGACAATTATCAACAAC AAGGACAAGCTCAAACTGGTAATAATCCGTTTGA

single-stranded DNA-binding protein
Fragment 4
SA75



CAATACTGAAGAAGATTTTCAGACCTCCCGTTCGATTGGAATGATTAGATGCCAATAATTACTAGTTATATCACTCAAGATGACGGTACAACAACAGT

hypothetical protein
Fragment 4
SA75



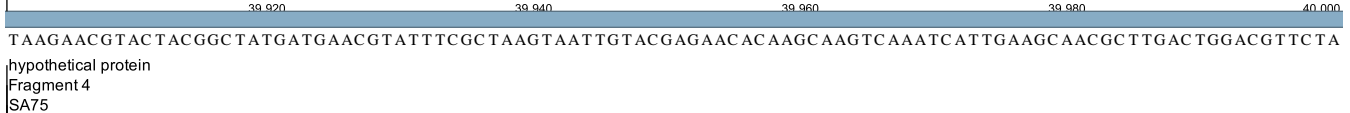
TGTCATCTCGGGTGTGTAATTAGGC AATAAAGAAACATTACTACTTGATAACGGGTTTCGATGTAGAAAGTAGATGTAAACGTTATAGATCCGTTTCAAATT

hypothetical protein
Fragment 4
SA75



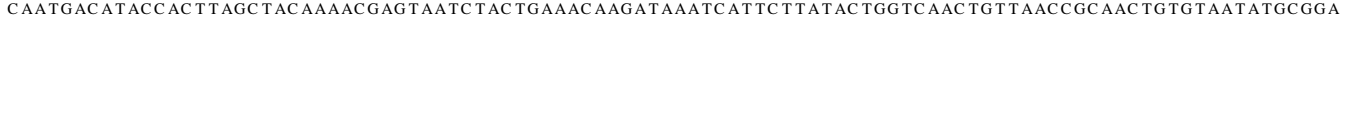
ACCGCAAGCAACGTCGAAAAATATTCGCGCTTGTC AAAGACATAGAAGAACATACAGGTC AACC AATGGACTATATGAGACATATGTTTCATCGAGTTTG

hypothetical protein
Fragment 4
SA75



TAAGAACGTACTACGGCTATGATGAACGTATTTTCGCTAAGTAATTGTACGAGAACACAAGCAAGTCAATCATGGAAGCAACGCTTGACTGGACGTTCTA

hypothetical protein
Fragment 4
SA75



CAATGACATACC ACTTAGCTACAAAACGAGTAATCTACTGAAACAAGATAAATCATCTTATACTGGTCAACTGTTAACC GCAACTGTGTAATATGCGGA



Fragment 4
SA75

hypothetical protein

41,020 41,040 41,060 41,080 41,100

TGATGGATTGTAAAAGAAAATCAGAGTTTCTTCTTACTTTAGAAATCATCAGTACCTATAGGGCAAGCAATGAAACATTTTTTCAAGTTATTCACCTCCTAA

Fragment 4
SA75

replication initiation protein

41,120 41,140 41,160 41,180 41,200

TCATATTTTATTAATTATAACAGAAAGGAGATAACGAAATGGCAACATTTAGAACGATAAAAAGAAAGTGGCGATTTTGTAACTGTGCATAAATCTTTTG

replication initiation protein

Fragment 4
SA75

41,220 41,240 41,260 41,280 41,300

TGTTCCGATAGTAATTTAAGTGCTAAAGCTAAAGGGATATTATGTATTTCCTAAGTCGTCCGACAAATGGCAAAATACACGTCAGAAGTAGTTAAACA

replication initiation protein

Fragment 4
SA75

41,320 41,340 41,360 41,380 41,400

TATGAATGATGGACAAAAATCAATCAATAGTGGCGTTCAAGAACCTATGGATAAATAATATGTTTCACAGAATACAAAAAGAGCTGAAAACGGTGTGTTT

replication initiation protein

Fragment 4
SA75

41,420 41,440 41,460 41,480 41,500

AAAGGTTTGAATACTTAGTTTACGAAAAACCAACCGAAATGCCATTTTCGGAAAACGGATTATCGGCAACGGGTTTTCGGAAAACGGAAAAACGGAAA

replication initiation protein

Fragment 4
SA75

41,520 41,540 41,560 41,580 41,600

ACCGAAAAGGGCGTACTACTAATAATAATAGTACTAATAATGATTTAACTAATAATAACAATACTAATAATGATGGAAGTATATTGTCGGGCAACCCGAC

replication initiation protein

Fragment 4
SA75

41,620 41,640 41,660 41,680 41,700

TGTGTATTCCATTCCCTATAAAGAAATTATCGAATACTTAAACAAAAAACAGGAAAGCATTTTAAACACAATACAGCTAAATCAAAAGATTTTATTAA

replication initiation protein

Fragment 4
SA75

41,720 41,740 41,760 41,780 41,800

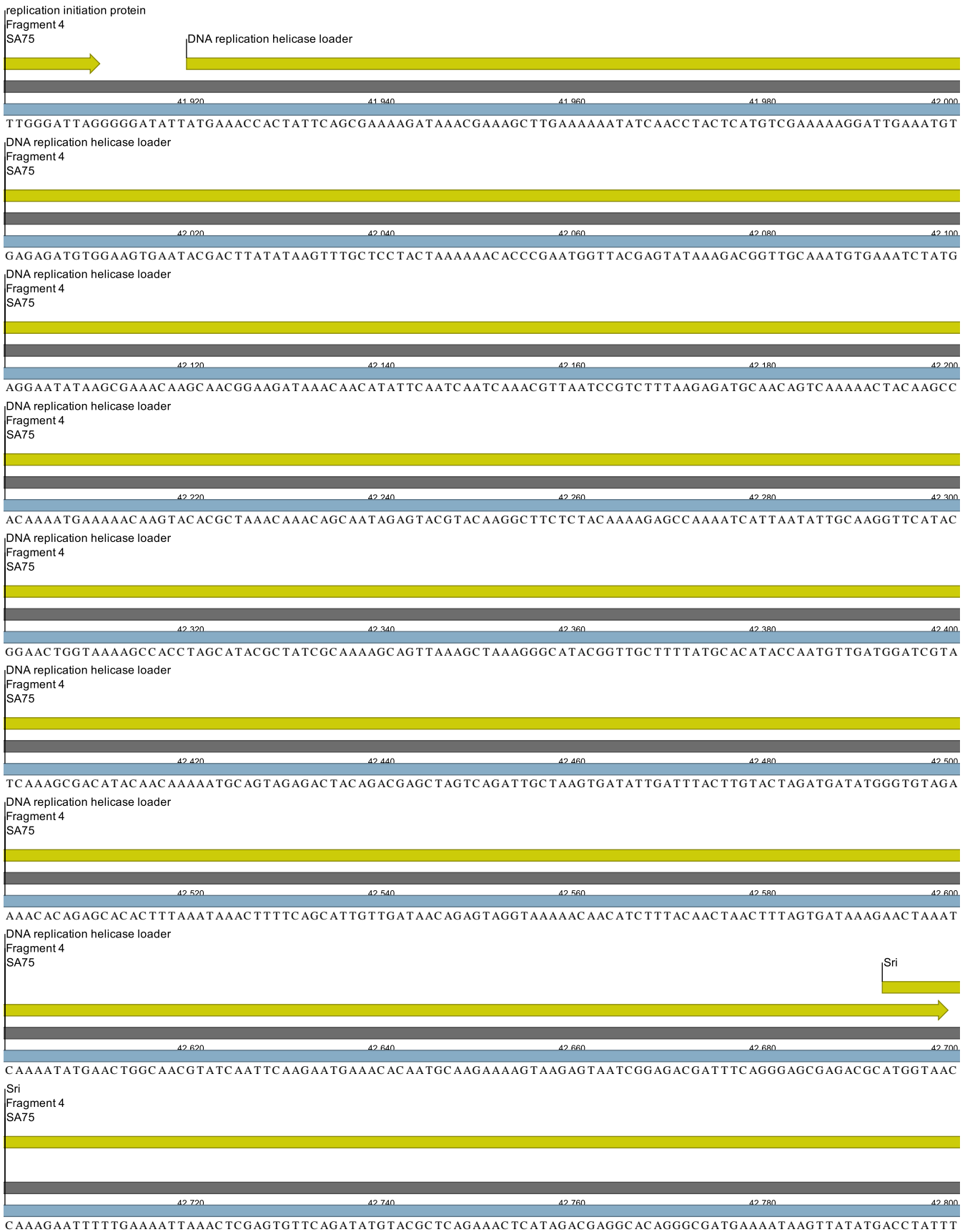
GCAAGATGGAATCAAGATTTTAGGTTGGAGGATTTTAAAAAGGTGATTGATATCAAAACAGCTGAGTGGCTAAACACGGATAGCGATAAATACCTTAGAC

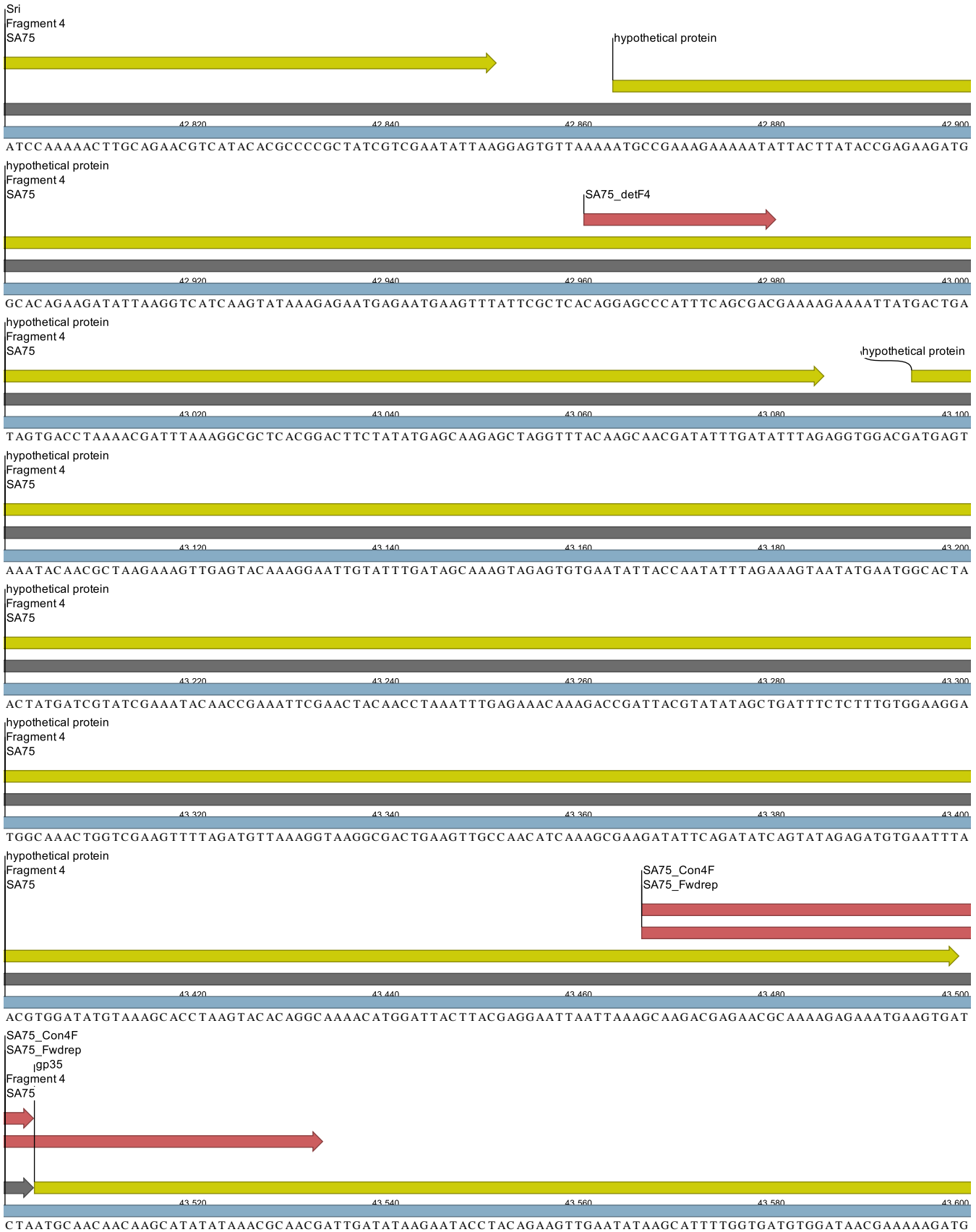
replication initiation protein

Fragment 4
SA75

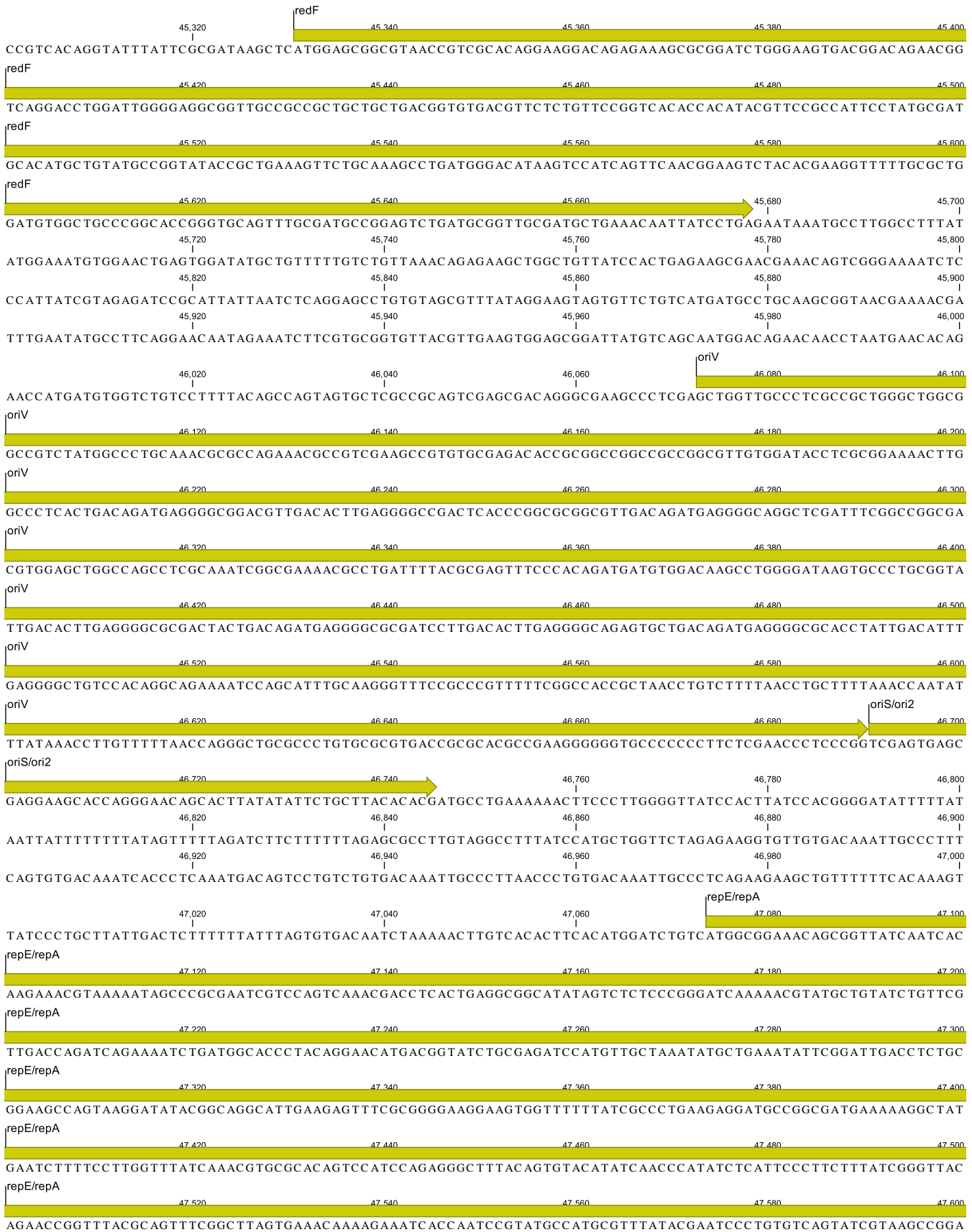
41,820 41,840 41,860 41,880 41,900

CAGAAACACTTTTGGCAATAAATTGAGGGGTACCATAATCAAAAAGCGCAACCAACTGGCATAGATCAATTGGAACGCATGAAGTACGACGAAAAGTTA









repE/repA
47,620 47,640 47,660 47,680 47,700
TGGCTCAGGCATCGTCTCTCGAAAATCGACTGGATCATAGAGCGTTACCAGCTGCCTCAAAGTTACCAGCGTATGCC TGACTCCGCCGCCGCTTCTGTG

repE/repA
47,720 47,740 47,760 47,780 47,800
CAGGTCGTGTTAATGAGATCAACAGCAGAACTCCAATGCGCTCTCATACATTGAGAAAAAGAAAGGCCAGAGACTCATATCGTATTTTCTCTCC

repE/repA
47,820 47,840 47,860 47,880 47,900
GCGATATCACTTCCATGACGACAGGATAGTCTGAGGGTTATCTGTCACAGATTGAGGGTGGTTCGTCACATTGTTCTGACCTACTGAGGGTAATTGTG

47,920 47,940 47,960 47,980 48,000
CACAGTTTGTGTTTCCCTTCAGCCTGCATGGATTTTCATACTTTTTGAACTGTAATTTTAAAGGAAGCCAAATTTGAGGGCAGTTTGTACAGTTGA

48,020 48,040 48,060 48,080 48,100
TTTCTTCTCTTTCCCTTCGTCATGTGACCTGATATCGGGGTTAGTTCGTCATCATTGATGAGGGTTGATTATCACAGTTTATTACTCTGAATTGGCTA

48,120 48,140 48,160 48,180 48,200
TCCGCGTGTGTACCTTACCTGGAGTTTTTCCACGGTGGATTTCTTCTTTCGCTGAGCGTAAGAGCTATCTGACAGAACAGTTCTTCTTTGCTTCTT

48,220 48,240 48,260 48,280 48,300
CGCCAGTTCGCTCGCTATGCTCGGTTACACGGCTGCGGCGAGCATCACGTGCTATAAAAAATAATTATAATTTAAATTTTTTAATATAAATATATAAATTA

CEN6
48,320 48,340 48,360 48,380 48,400
AAAAAGAAAAGTAAAAAAGAAATTAAGAAAAAATAGTTTTTGTGTTTCCGAAGATGTAAAAGACTCTAGGGGGATCGCCAAACAATACTACCTTTTATC

ARSH4
48,420 48,440 48,460 48,480 48,500
TTGCTCTTCCGCTCTCAGGTATTAATGCCGAATTGTTTCATCTTGTCGTGTAGAAGACCACACAGAAAATCCGTGATTTTACATTTTACTTATCGT

ARSH4
48,520 48,540 48,560 48,580 48,600
TAATCGAATGTATATCTATTTAATCTGCTTTTCTTGTC TAATAAATATATATGTAAGTACGCTTTTTGTTGAAATTTTTTAAACCTTTGTTATTTTTT

ARSH4
48,620 48,640 48,660 48,680 48,700
TTTCTTCAATCCGTAACCTTCTTACCTTCTTTATTTACTTTCTAAAATCCAAATACAAAACATAAAAAATAAATAAACACAGAGTAAATTTCCCAAATATT

ARSH4
48,720 48,740 48,760 48,780 48,800
CCATCATTA AAAAGATACGAGGCGGTGTAAGTTACAGGCAAGCGATCCGCTAAGAAACCATTATTATCATGACATTAACCTATAAAAAATAGGCGTATCA

48,820 48,840 48,860 48,880 48,900
CGAGGCCCTTTGCTCGCGCGTTCGGTGATGACGGTGAAAACCTCGACACATGCAGCTCCCGGAGACGGTACAGCTTGTCTGTAAGCGGATGCCGG

48,920 48,940 48,960 48,980 49,000
GAGCAGACAAGCCGTCAGGCGCGTACGCGGTGTTGGCGGGTGTGCGGGCTGGCTTAACATGCGGCATCAGAGCAGATTGTACTGAGAGTGCACCAT

49,020 49,040 49,060 49,080 49,100
ACCACCTTTTCAATTCATCATTTTTTTTTTATTCTTTTTTTTGATTTCCGTTTCTTGAATTTTTTTTGATTCGGTAATCTCCGAACAGAAGGAAGAAGC

49,120 49,140 49,160 49,180 49,200
AAGGAAGGAGCACAGACTTAGATTGGTATATATACGCATATGTAGTGTGAAGAAACATGAAATGCCCAGTATTCTTAACCCAACTGCACAGAACAAAA

49,220 49,240 49,260 49,280 49,300
ACCTGCAGGAAACGAAGATAAATCATGTCGAAAGCTACATATAAGGAACGTGCTGCTACTCATCCAGTCCGTTGCTGCCAAGCTATTTAATATCATGC

URA3
49,320 49,340 49,360 49,380 49,400
ACGAAAAGCAAACAACAACTTGTGTGCTTCATTGGATGTTCTGTAACCAAGGAATTACTGGAGTTAGTTGAAGCATTAGGTCCCAAAATTTGTTTACTAAA

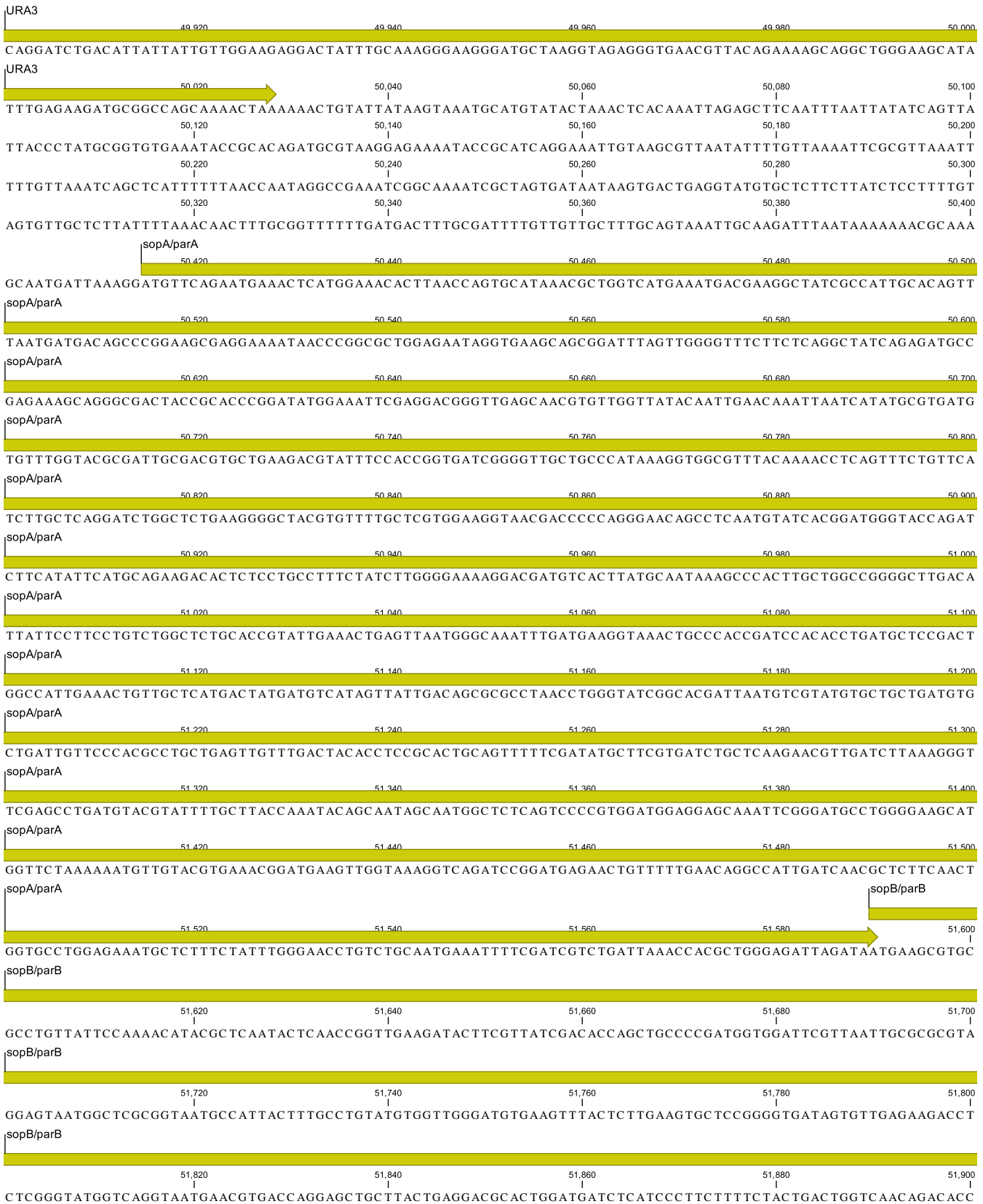
URA3
49,420 49,440 49,460 49,480 49,500
AACACATGTGGATATCTTGACTGATTTTTCCATGGAGGGCACAGTTAAGCCGCTAAAGGCATTATCCGCCAAGTACAATTTTTACTCTTCAAGACAGA

URA3
49,520 49,540 49,560 49,580 49,600
AAATTTGCTGACATTGGTAATACAGTCAAATGCACTCTGCGGGTGTATACAGAATAGCAGAATGGGCAGACATTACGAATGCACACGGTGTGGTGG

URA3
49,620 49,640 49,660 49,680 49,700
GCCAGGTATTGTTAGCGGTTTGAAGCAGGCGGCAAGAAGTAACAAGGAACCTAGAGGCCTTTTGATGTTAGCAGAATTGTCATGCAAGGC TCCCT

URA3
49,720 49,740 49,760 49,780 49,800
ATCTACTGGAGAATATACTAAGGGTACTGTTGACATTGCGAAGAGCGACAAGATTTTGTATCGGCTTTATTGCTCAAAGAGACATGGGTGGAAGAGAT

URA3
49,820 49,840 49,860 49,880 49,900
GAAGGTTACGATTGGTTGATTATGACACCCGGTGTGGGTTTAGATGACAAGGGAGACGCTATGGGTC AACAGTATAGAACCCTGGATGATGTGGTCTCTA



sopB/parB

GGCGTTCGGTCGAAGAGTATCTGGTGTCTATAGAAATTGCCGATGGGAGTCGCCGTCGTAAGCTGCTGCACCTACCGAAAAGTGATTATCGTGTTCGGTT

sopB/parB

GGCGAGCTGGATGATGAGCAGATGGCTGCATTATCCAGATTGGGTAACGATTATCGCCAAACAAGTGCATTATGAACGTGGTCAGCGTTATGCAAGCCGAT

sopB/parB

TGCAGAATGAATTTGCTGGAAAATTTCTGCGCTGGCTGATGCGGAAAAATTTTCACGTAAGATTATTACCCGCTGTATCAACACCGCCAAATTGCCATA

sopB/parB

ATCAGTTGTTGCTCTTTTTCTCACCCCGTGAACATCTGCCCGGTCAGGTGATGCACCTCAAAAAGCCTTTACAGATAAAGAGGAATTACTTAAGCAG

sopB/parB

CAGGCATCTAACCTTCATGAGCAGAAAAAGCTGGGGTGATATTTGAAGCTGAAGAAGTTATCACCTTTTAACTTCTGTGCTTAAAACGTCATCTGCAT

sopB/parB

CAAGAAC TAGTTAAAGCTACGACATCAGTTTGCCTCGAGCGACAGTATTGTATAAGGGCGATAAAATGGTGCTTAACTGGACAGGTCCTCGTGTTC

sopB/parB

AACTGAGTGTATAGAGAAAATGAGGCCATCTTAAGGAAC TTGAAAAGCCAGCACCTGATGCGACC TCGTTTTAGTCTACGTTTATCTGCTTTACTT

AATGTCTTTGTTACAGGCCAGAAAGCATAACTGGCTGGAATTTCTCTCGGGCCACTGTTCCACTTGTATCGTCGGTCTGATAATCAGACTGGGACC

ACGGTCCCAC TCGTATCGTCGGTCTGATTATTAGTCTGGGACCACGGTCCCAC TCGTATCGTCGGTCTGATTATTAGTCTGGGACCACGGTCCCAC TCGT

GTTGTCTGGTCTGATTATCGGTCTGGGACCACGGTCCCAC TTGTATTGTCGATCAGACTATCAGCGTGAGACTACGATTCCATCAATGCCGTCAAGGGCA

AGTATTGACATGTCGTCGTAACCTGTAGAACGGAGTAACCTCGGTGTGCGGTTGTATGCC TGC TGTGGATTGCTGCTGTGCTTATCCACAACATT

TTGCGCACGGTTATGTGGACAAAATACCTGGTTACCCAGGCCGTGCCGGCACGTTAACCGGGCTGCATCCGATGCAAGTGTGTCGCTGTCGACGAGCTCG

CGAGCTCGGACATGAGGTTGCCCGTATTCAGTGTGCTGATTTGTATTGCTGAAAGTTGTTTTACGTTAAGTTGATGCAGATCAATTAATACGATACC

TGCGTATAAATTGATTATTTGACGTGGTTTGTATGGCTCCACGCACGTTGTGATATGTAGATGATAATCATTATCACTTTACGGGTCCTTTCCGGTGATC

CGACAGGTTACGGGGCGGCAGCTCGCGGGTTTTTCGCTATTTATGAAAATTTCCGGTTTAAAGCGTTTCCGTTCTTCTTCGTCATAACTTAATGTTTTT

ATTTAAAATACCTCTGAAAAGAAAGGAAACGACAGGTGCTGAAAGCGAGCTTTTTGGCCCTGTGCTGTTCCTTTCTCTGTTTTGTCCGTGGAATGAAC

AATGGAAGTCGAGCTCATCGCTAATAACTTCGTATAGCATACATTATACGAAGTTATATTCGAT



Table S1. Primers used in this study. This includes oligonucleotide primers used for constructing each fragment and final assembly of the SA75 genome via TAR-cloning as well as primers used for detection of each fragment junction and primers used to generate the 500 bp direct repeat at the 3' end of the cloned phage genome.

Name	Sequence	Description
SA75_Con1F	GTAACAGATACTGCTGAACAACTAAATT GAATGTTGAAGCtagggataacagggtaa tgatcctctagagtcgacctg	Forward primer to amplify TAR vector 01 from pCC1BAC/YCp (blue) and add I-SceI recognition site (red) as well as SA75 homology (capitals)
SA75_Con1R	CTTATATCAATCGTTGCGTTTATATATGC TTGTTGTTGCATtagggataacagggtaa tcgggtaccgagctcgaattc	Reverse primer to amplify TAR vector 01 from pCC1BAC/YCp (blue) and add I-SceI recognition site (red) as well as SA75 homology (capitals)
SA75_Con2F	CGTATAGATAACATTGATGGAGAATTATGG ATTTATTCAGCtagggataacagggtaa gatcctctagagtcgacctg	Forward primer to amplify TAR vector 02 from pCC1BAC/YCp (blue) and add I-SceI recognition site (red) as well as SA75 homology (capitals)
SA75_Con2R	CTAAATTAACAACCTCATCTGATGAATCA ACTTCCGCTTCtagggataacagggtaa cgggtaccgagctcgaattc	Reverse primer to amplify TAR vector 02 from pCC1BAC/YCp (blue) and add I-SceI recognition site (red) as well as SA75 homology (capitals)
SA75_Con3F	CACTTCTAGAACATCAAGTATTGGCAGTA CTGATAATTCCtagggataacagggtaa gatcctctagagtcgacctg	Forward primer to amplify TAR vector 03 from pCC1BAC/YCp (blue) and add I-SceI recognition site (red) as well as SA75 homology (capitals)
SA75_Con3R	CAAGCAATCTATCAATAAATTGTCCGTTG GGCTTCAATCTAGtagggataacagggta atcgggtaccgagctcgaattc	Reverse primer to amplify TAR vector 03 from pCC1BAC/YCp (blue) and add I-SceI recognition site (red) as well as SA75 homology (capitals)
SA75_Con4F	GCAAGACGAGAACGCAAAAGAGAAATGAA GTGATCTAtagggataacagggtaatgat cctctagagtcgacctg	Forward primer to amplify TAR vector 04 from pCC1BAC/YCp (blue) and add I-SceI recognition site (red) as well as SA75 homology (capitals)
SA75_Con4R	GCTTTTCACCTCCTTACACATAATTTGTA AGTCATCAACtagggataacagggtaatc gggtaccgagctcgaattc	Reverse primer to amplify TAR vector 04 from pCC1BAC/YCp (blue) and add I-SceI recognition site (red) as well as SA75 homology (capitals)
SA97_Fwdrep	GCAAGACGAGAACGCAAAAGAGAAATGAA GTGATCTAATGCAACAACAAGCATATATA AACGCAACG	Forward primer to amplify the beginning 500 bp to add a direct repeat to the end of cloned SA75
SA75_Rev_500	tactcaagcttgcacgctgcaggtcgac tctagaggatctagggataacagggtaa GGTTATAAGTATTATCAAAC	Reverse primer to amplify the beginning 500 bp to add a direct repeat to the end of cloned SA75. pCC1BAC/YCp (blue), I-SceI recognition site (red), and SA75 homology (capitals)

SA75_Con4F_repeat	CATTCACGTGATCCGTACTGGTTTGATAA TACTTATAACCTagggataacagggtaat gatcctctagagtcgacctg	Forward to amplify TAR final vector from pCC1BAC/YCp (blue) and add I-SceI recognition site (red) as well as SA75 500 bp repeat homology (capitals)
RCO495	ACGACGGCCAGTGAATTG	Forward primer to detect YCp/SA75 Fragment 1 junction
SA75_detR1	GGCGCGTCTAAAGCTTCTGA	Reverse primer to detect YCp/SA75 Fragment 1 junction
SA75_detF1	ATCCGGATGAACCAGGTGGA	Forward primer to detect SA75 Fragment 1/2 junction
SA75_detR2	GCACCTGGTTTATCAGCCCA	Reverse primer to detect SA75 Fragment 1/2 junction
SA75_detF2	CAGCATGCCGTGACGGGTAC	Forward primer to detect SA75 Fragment 2/3 junction
SA75_detR3	TGAGCATGCACCTTACCCGA	Reverse primer to detect SA75 Fragment 2/3 junction
SA75_detF3	ATACATGGGAGGGGCAACGT	Forward primer to detect SA75 Fragment 3/4 junction
SA75_detR4	TACTTCGCGCTTTCCTTGCC	Reverse primer to detect SA75 Fragment 3/4 junction
SA75_detF4	CAGGAGCCCATTTAGGTGAGAC	Forward primer to detect SA75 Fragment 4/YCp junction
RCO493	CCAAGCTATTTAGGTGAGAC	Reverse primer to detect SA75 Fragment 4/YCp junction