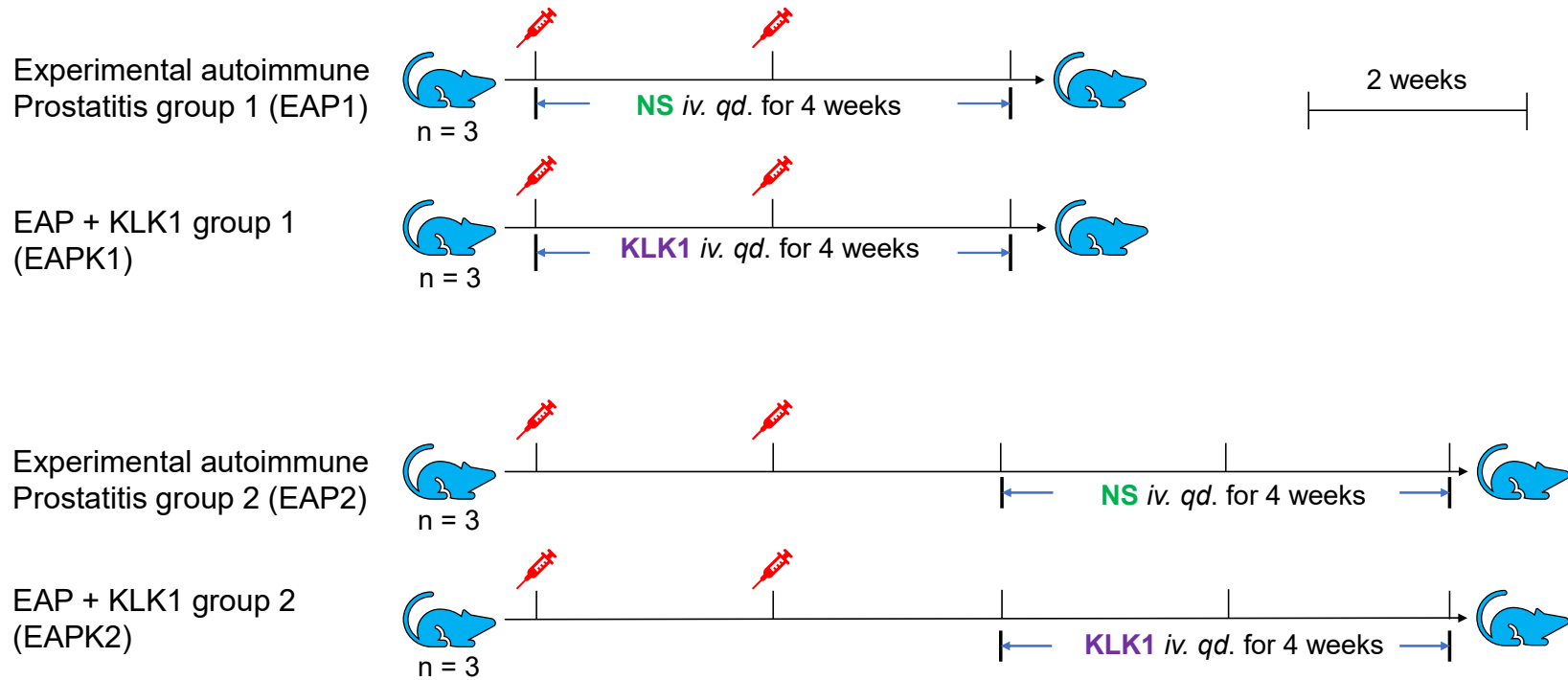


# Pre-Experiment

Because it is uncertain whether KLK1 can ameliorate inflammation, and even it cannot be ruled out that KLK1 may aggravate the progression of inflammation. We designed this pre-experiment before the formal research begins in order to explore the effect of KLK1 on prostatitis preliminarily. The induction method of rat EAP model and the dosage of KLK1 are the same as those in the main article. The specific grouping and administration procedures are shown in the figure1 on page 2. The HE stained photos of rat prostate are shown in the figure2 on page 3.

**Figure1. Animal grouping and flowchart of pre-experiment**



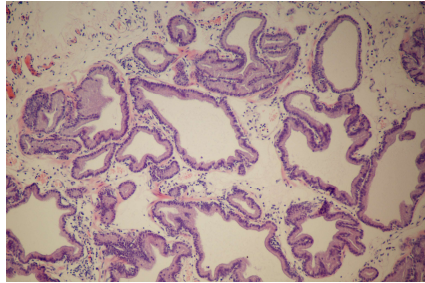
Wistar rats (enrolled at 12-week-old)

*iv. qd.* → injection via tail vein; once a day

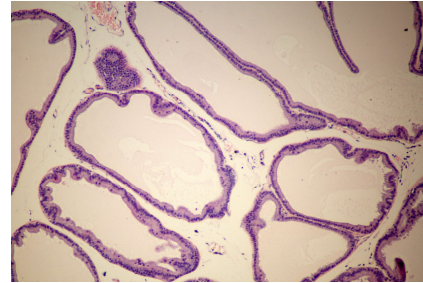


emulsion of rat prostate protein extract and Freund's Adjuvant Complete (1:1); intradermally immunized

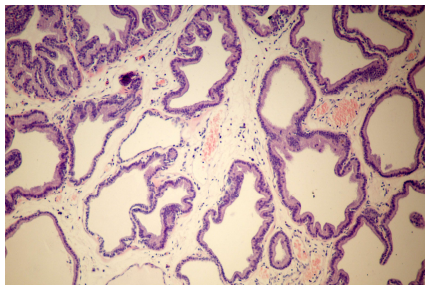
**Figure2. Representative HE photos of rats prostate in pre-experiment (magnification  $\times 100$ )**



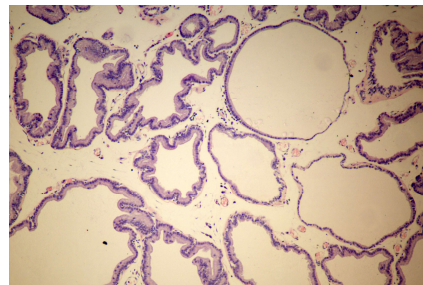
**EAP1**



**EAPK1**



**EAP2**



**EAPK2**