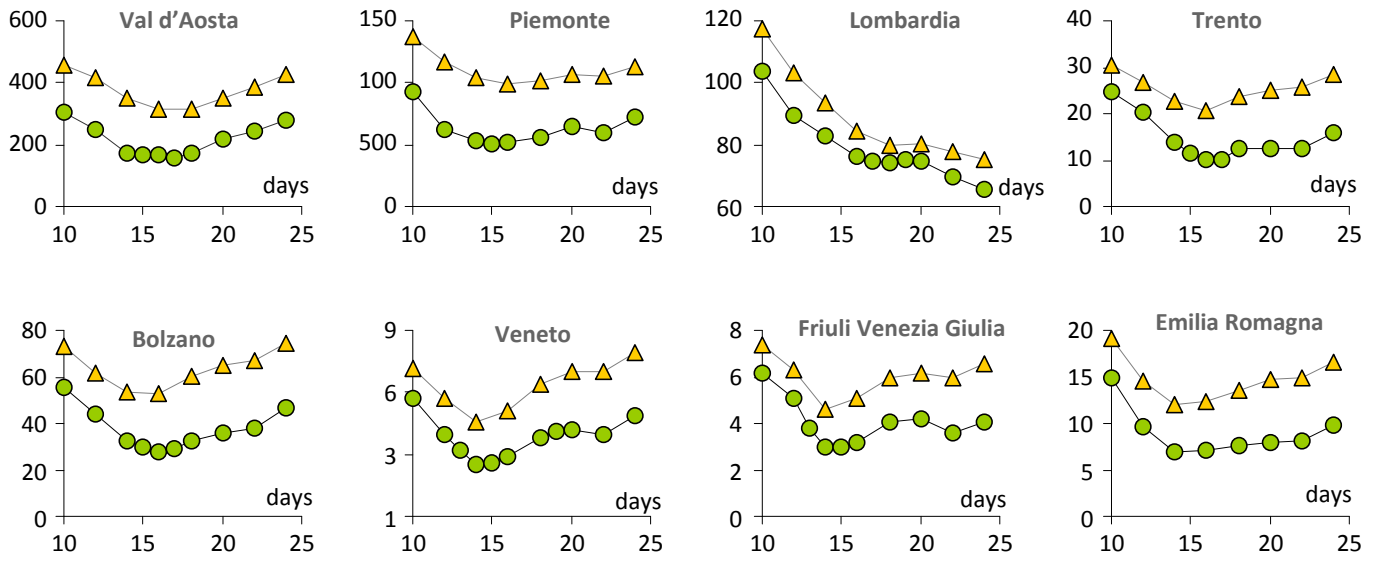
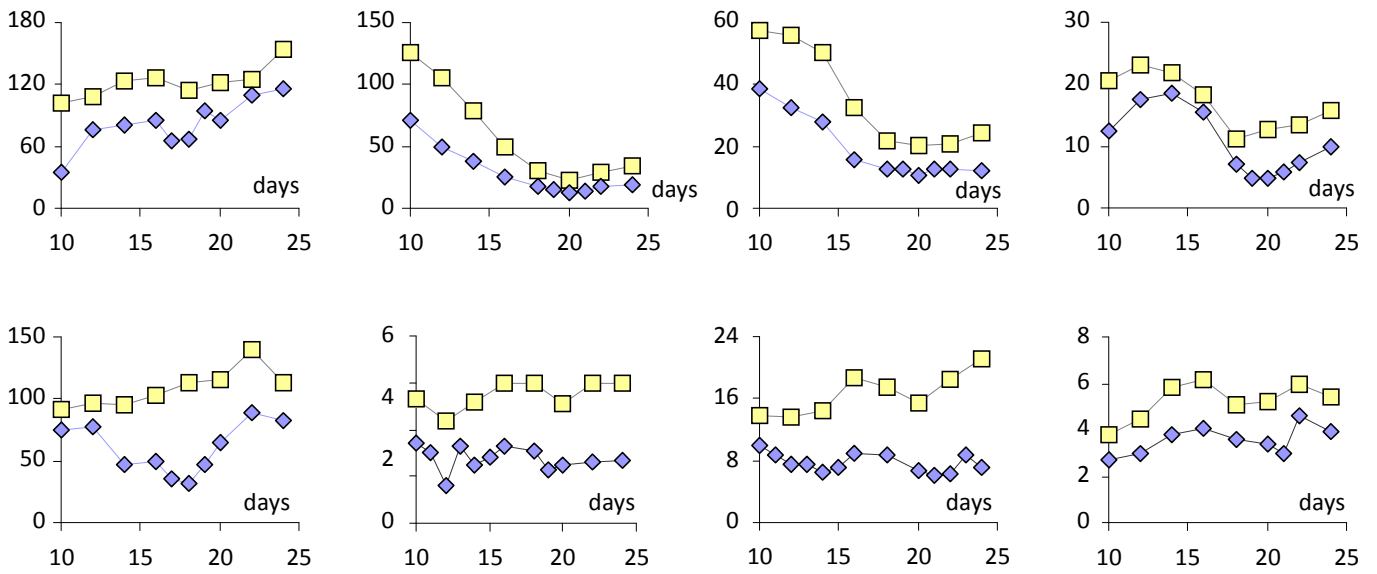


Mean quadratic distance (RCS: observed vs. calculated, 18 May - 6 November 2020: "free/summer period" )



▲ 5 atmospheric parameters      ● 5 atmospheric parameters and their interactions

Mean quadratic distance (RCS: observed vs. calculated, 14 november – 31 december: "confined/autumn period")



■ 5 atmospheric parameters      ◆ 5 atmospheric parameters and their interactions