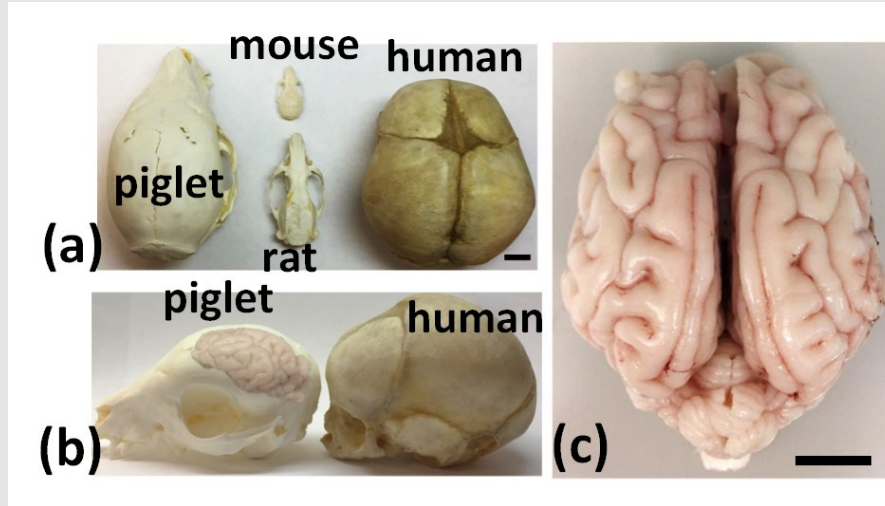
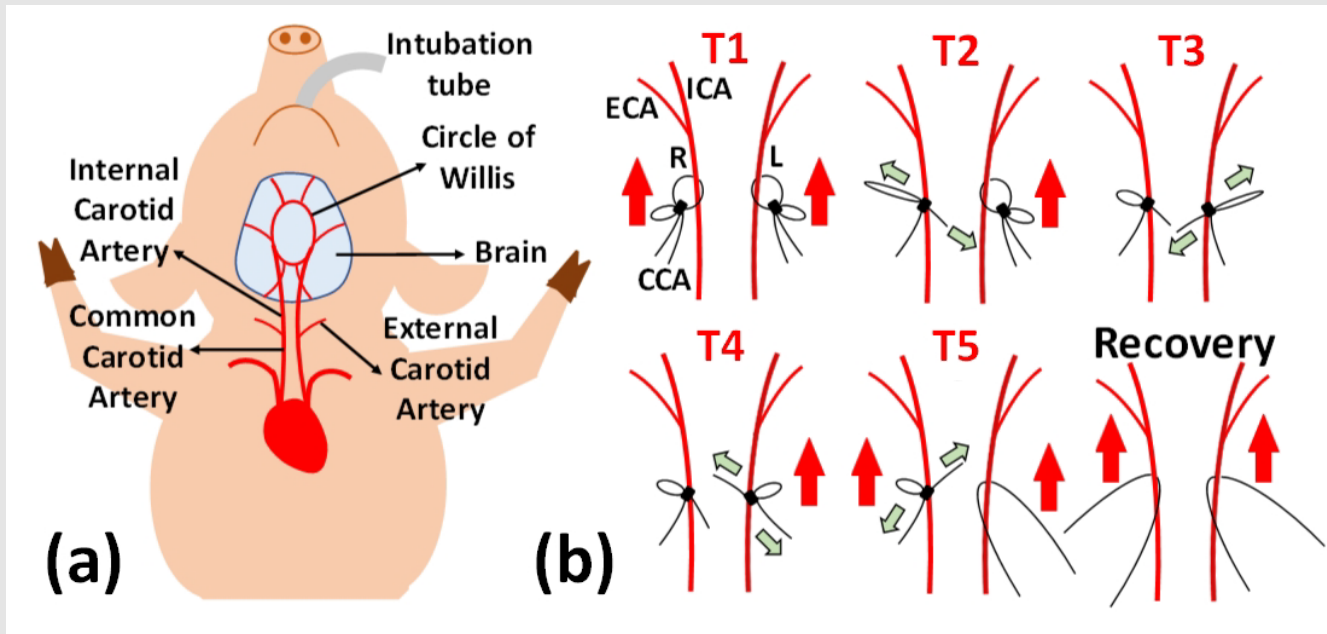


Supplemental Figures:



Supplemental Figure 1: Anatomical Comparisons of Rodents, Piglet and Human Infant.

(a) Skulls of mouse (3 months), rat (3 months), piglet (birth-dead), and human infant (31 weeks after fertilization). **(b)** Similarity of the piglet and human infant. **(c)** An intact gyrencephalic brain of piglet. Scale bar: 1 cm.



Supplemental Figure 2: Surgical Procedures for Transient Global Ischemia-Reperfusion Model of Piglet (View on Supine Laid Animal). (a) General anatomy involved in the surgery. (b) Step-by-step surgical procedures of ligations and release of right and left CCAs with nylon surgical sutures. T1: Baseline; T2: Right CCA ligation; T3: Bilateral ligation; T4: Releasing left ligation; T5: Releasing both ligations & Recovery. ICA: Internal Carotid Artery; ECA: External Carotid Artery; CCA: Common Carotid Artery; R: Right, L: Left. Red Arrow: Blood flow in CCAs. Green Arrow: Direction of the pulling force to tighten or releasing the knots on CCAs.