

1: w1118

2: pk²⁰

3: sple¹

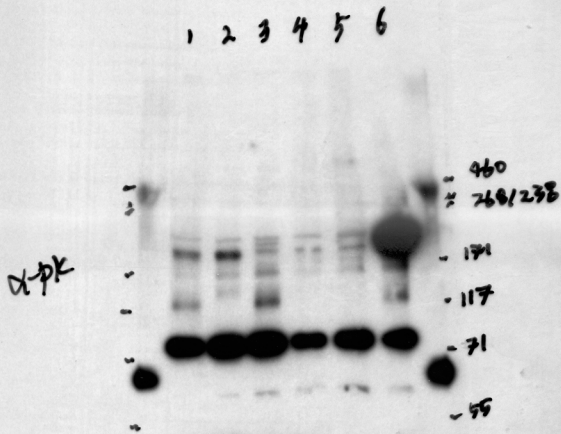
4: PK-sple¹³

5: Awt5L > PKΔUDRC

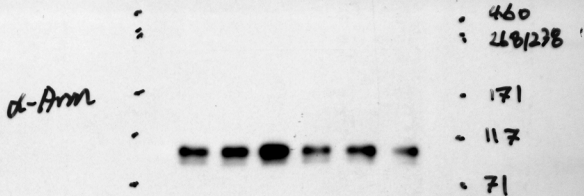
6: Awt5L > GFP-sple

[eye discs]

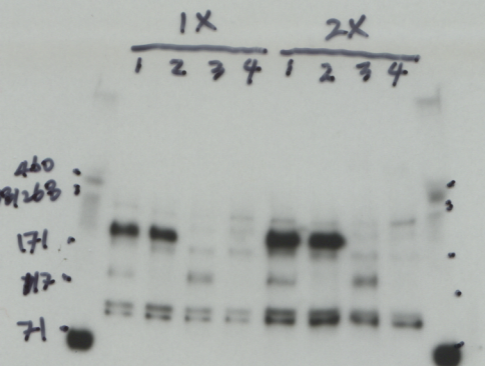
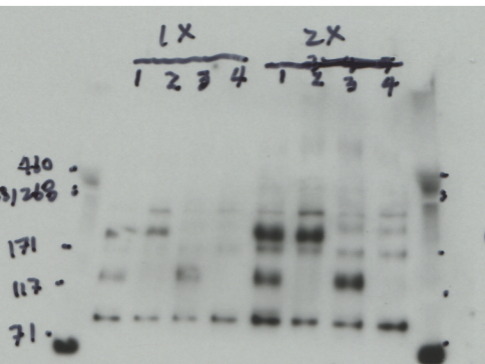
original image for
Fig 7A, anti-Pk[C]



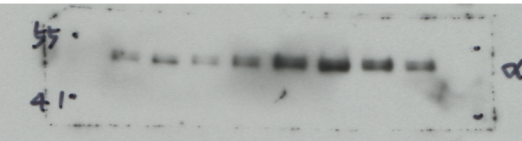
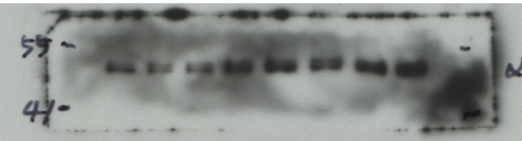
original image for Fig 7B, anti-Arm



original image Fig 7B, anti-Pk[C]
36 and 40 hours

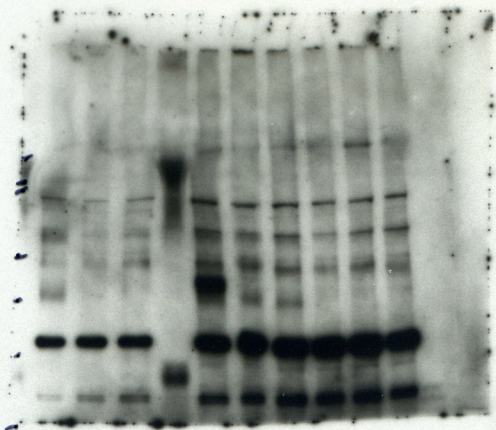


original images Fig 7B, lower portions
of filters cut and probed with anti-tub.



original image Fig 6-2B, cut and upper portion probed with anti-Pk[C], lower with anti-tub

- 1: w1118
- 2: pk-sple CRISPR #2
- 3: " #5
- 4: w1118
- 5: pk^{M null} #2
- 6: " #7
- 7: pk-sple CRISPR #2
- 8: " #5
- 9: pk-sple¹³



1 2 3 4 5 6 7 8 9

eye Brain

α-Tub

original image Fig 6-2C, probed with anti-HA. Lane marked with red X expressed a smaller HA-tagged protein as a control and was cropped out

α -HA

X

1: HA (+)

2: W1118

3: HA-pKM #1

4: HA-pKM #7

1 2 3 4

- 1: HA(+)
- 2: W1118
- 3: HA-PKM #1
- 4: HA-PKM #7

original image Fig 6-2C
probed with anti-Pk[C]

