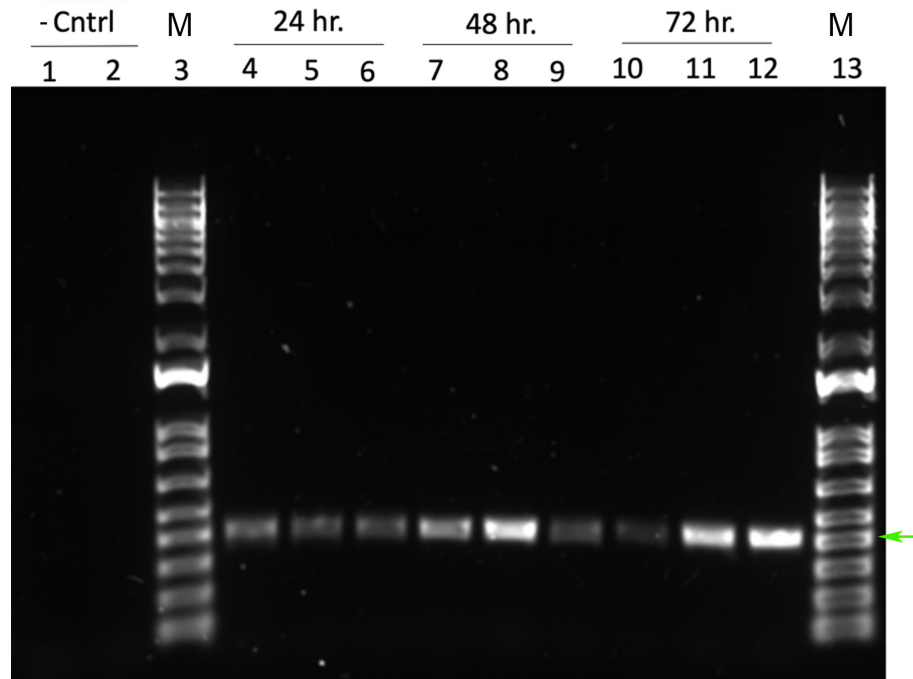
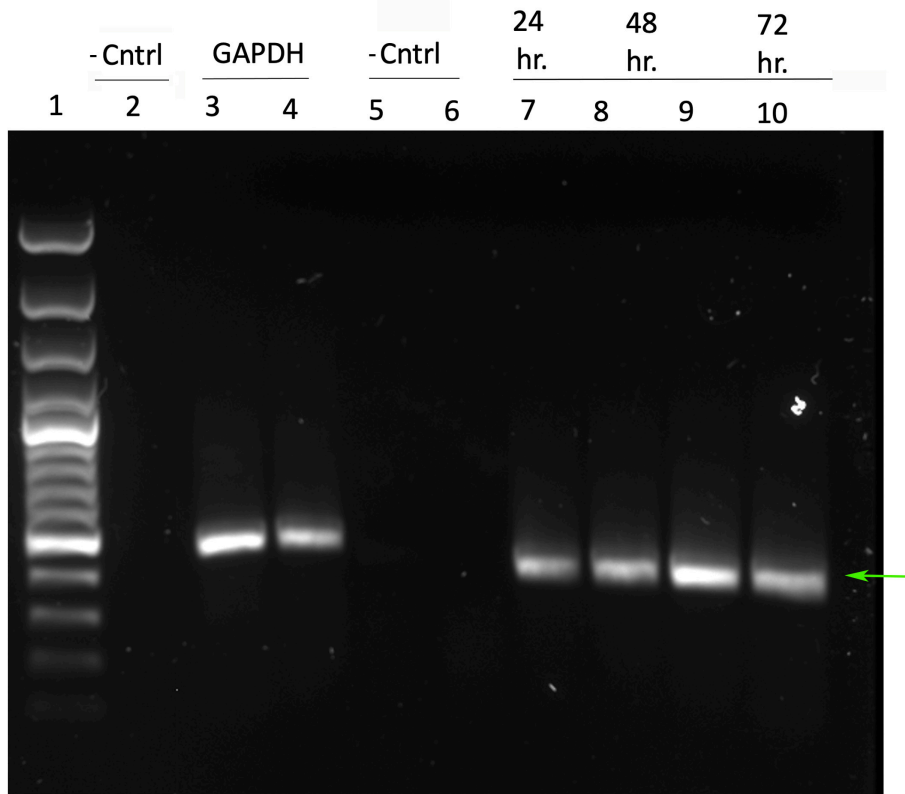


Supplementary Material

Borrelia burgdorferi Co-Localizing with Amyloid Markers in Alzheimer's Disease Brain Tissues



Supplementary Figure 1. 16S rDNA PCR to test the presence of *B. burgdorferi* in infected Kelly cells. The amplified products visualized by standard agarose gel electrophoresis methods. Lane M shows 1kb DNA ladder (Life Sciences). Lane 1: no template control, lane 2: uninfected Kelly cells, lane 4-12 shows 24-h, 48-h, and 72-h treatments respectively. Green arrow demonstrates the expected 454 bp band size for 16S rDNA.



Supplementary Figure 2. 16S rDNA PCR to test the presence of *B. burgdorferi* in infected BE2C cells. The amplified products visualized by standard agarose gel electrophoresis methods. Lane 1 shows 1 kb DNA ladder (Life Sciences). Lane 2: PCR no template control, Lanes 3 and 4: GAPDH housekeeping gene specific PCR product, Lane 5: uninfected BE2C cells in DMEM media, Lane 6: uninfected BE2C in co-culture media, Lane 7: 24 h infection, Lanes 8 and 9: 48 h infection, Lane 10: 72 h infection. Green arrow demonstrates the expected 454 bp band size for 16S rDNA.