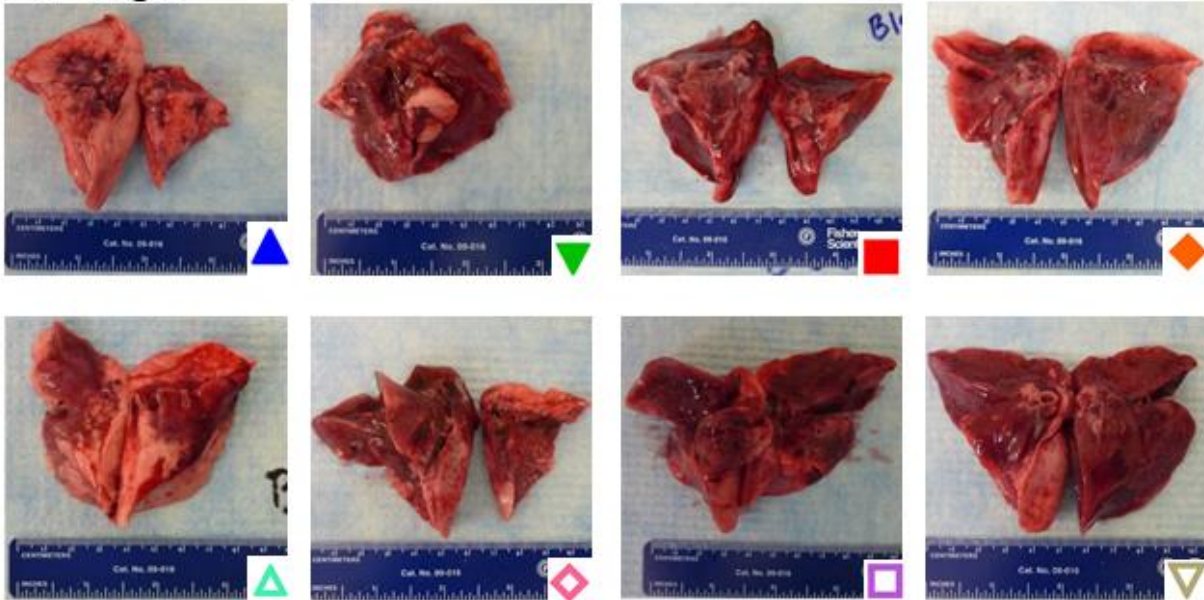
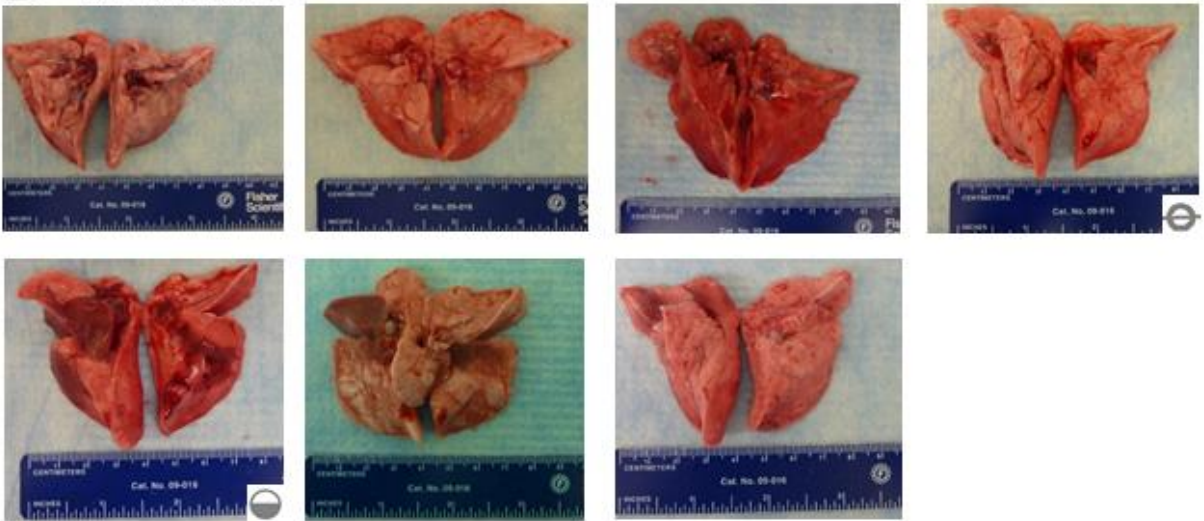


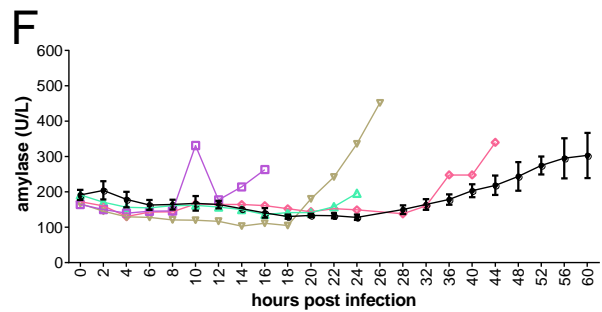
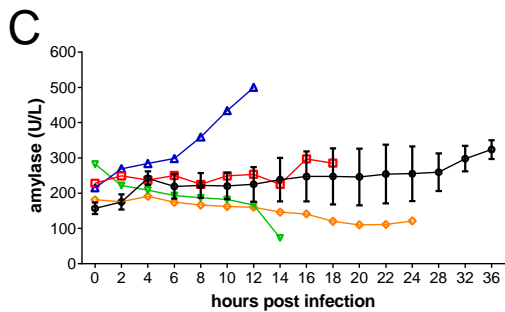
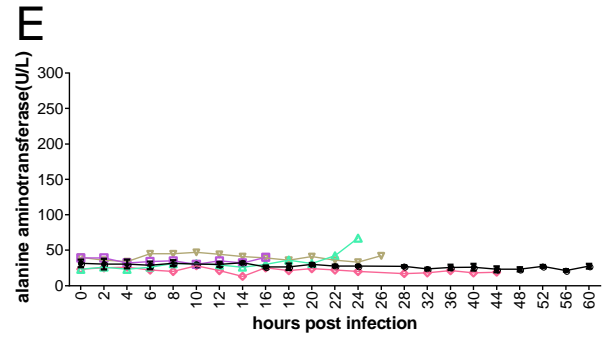
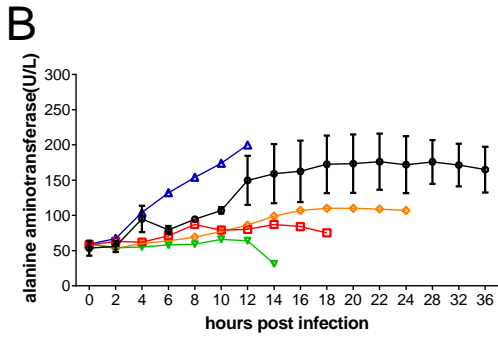
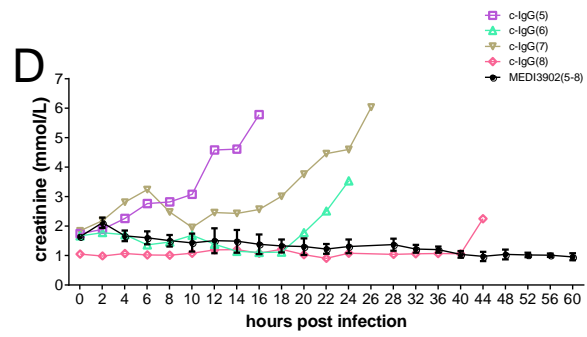
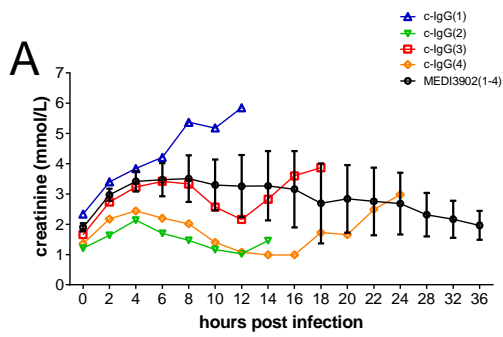
A c-IgG



B MEDI3902



1
2 **Supplemental Figure S1.** Lungs from rabbits pretreated with (A) c-IgG at the time when they
3 succumbed to infection, or (B) MEDI3902 at 36 h post infection or 60 h post infection. One lung
4 image from a MEDI3902-pretreated rabbit is not available due to a camera malfunction. Symbols
5 displayed in the lower right corner for selected lungs correspond to those used in **Figures 1,4,5.**



6

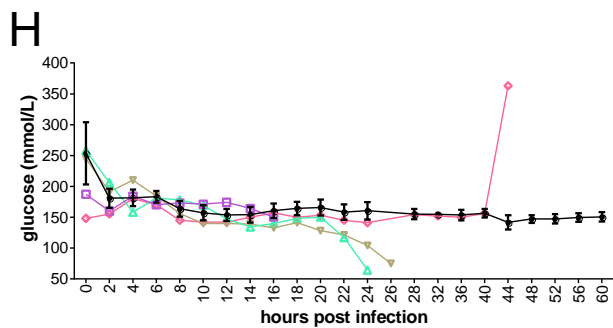
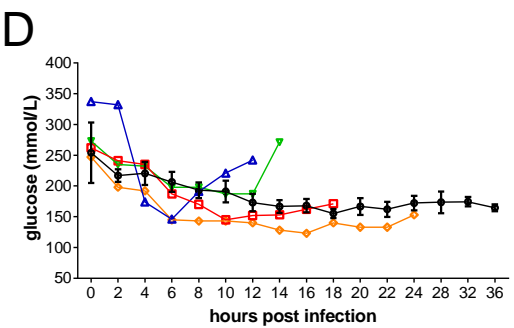
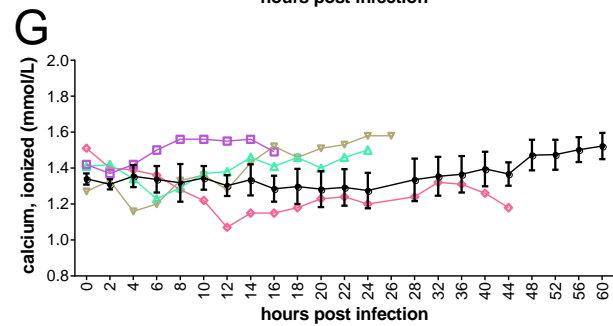
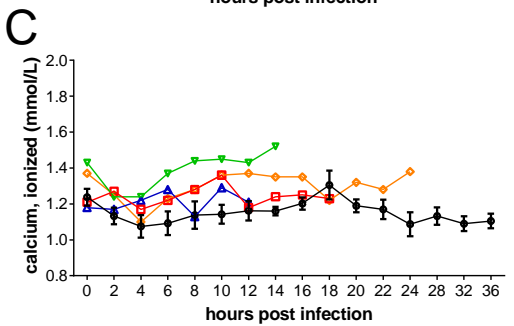
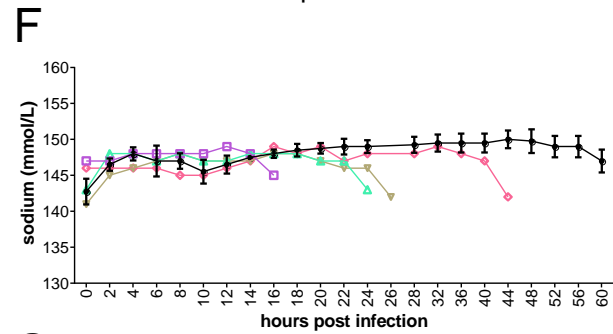
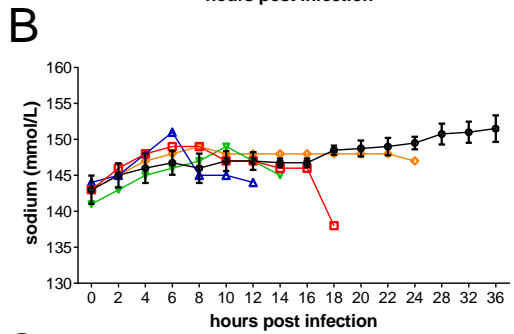
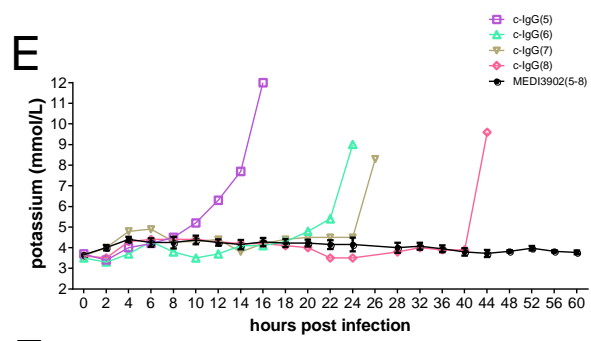
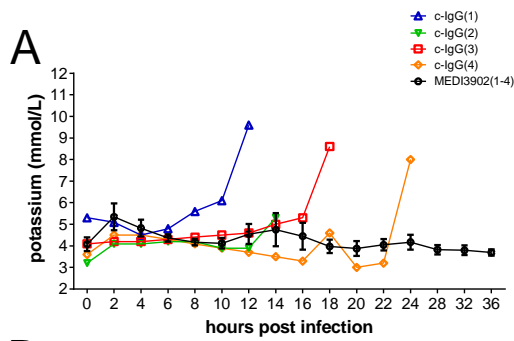
7 **Supplemental Figure S2. Longitudinal changes in organ injury biomarkers for rabbits**

8 **pretreated with MEDI3902 versus c-IgG. (A,D) creatinine, (B,E) alanine aminotransferase, and**

9 **(C,F) amylase determined using arterial blood samples taken every 2 hours for the first 24 h and**

10 **then every 4 h thereafter until survivors were euthanized at 36 hpi (A-C, Study 1) or 60 h (D-F,**

11 **Study 2).**



12

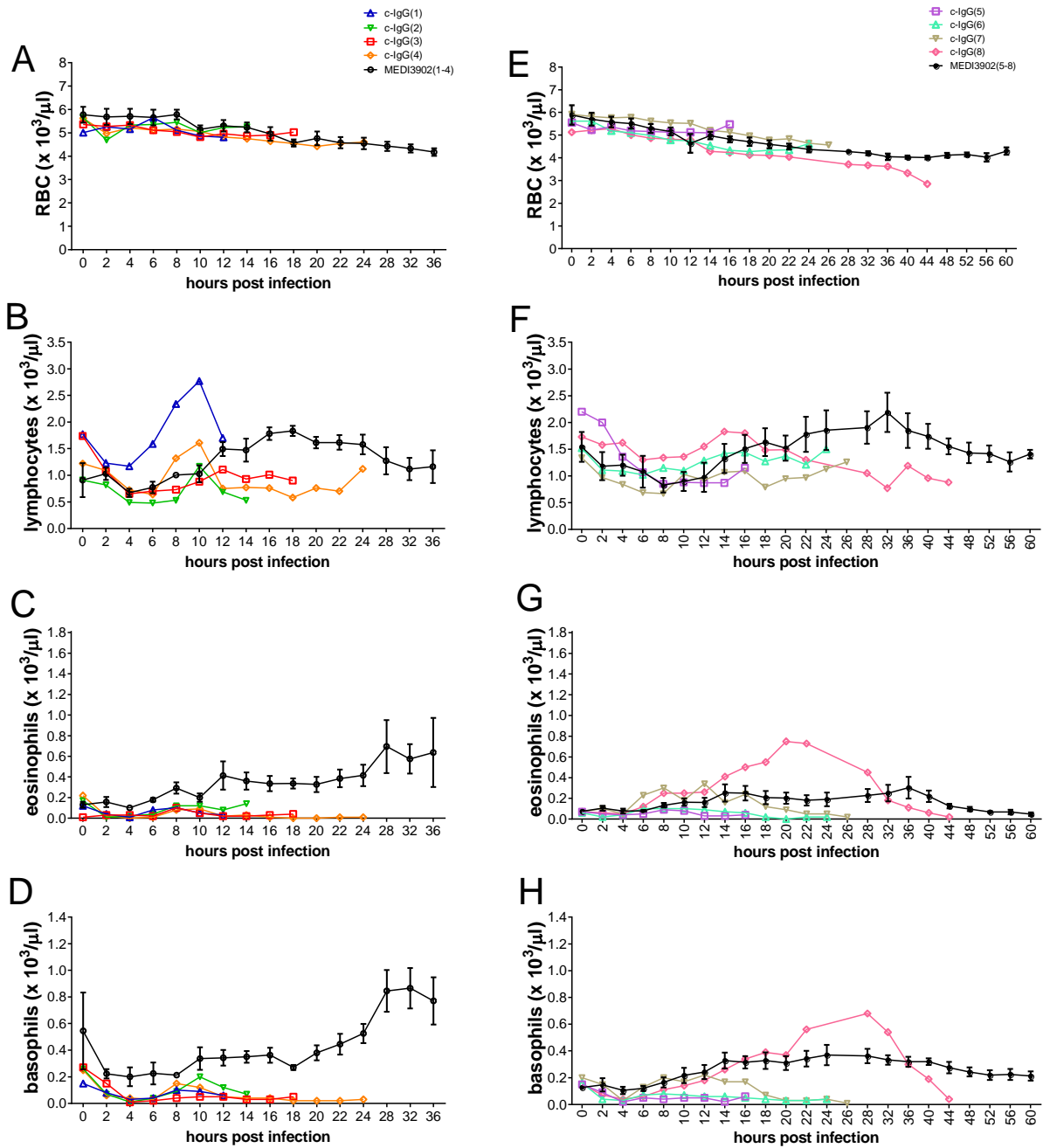
13 **Supplemental Figure S3. Longitudinal changes in electrolytes and glucose for rabbits**

14 **pretreated with MEDI3902 versus c-IgG. (A,E) potassium, (B,F) sodium, (C,G) calcium, and**

15 **(D,H) glucose determined using arterial blood samples taken every 2 hours for the first 24 h and**

16 **then every 4 h thereafter until survivors were euthanized at 36 hpi (A-D, Study 1) or 60 h (E-H,**

17 **Study 2).**



18

19 **Supplemental Figure S4. Longitudinal changes in hematological parameters for rabbits**

20 **pretreated with MEDI3902 versus c-IgG. (A,E) Red blood cells, RBC, (B,F) lymphocytes, (C,G)**

21 **eosinophils, and (D,H) basophils determined using arterial blood samples taken every 2 hours for**

22 **the first 24 h and then every 4 h thereafter until survivors were euthanized at 36 hpi (A-D, Study**

23 **1) or 60 h (E-H, Study 2).**