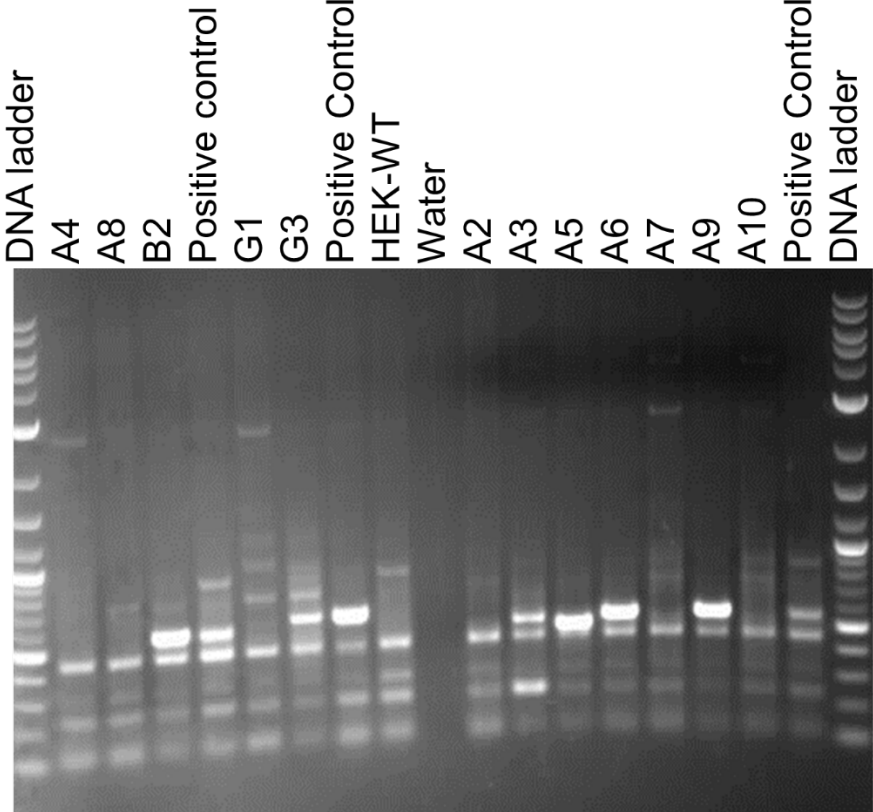
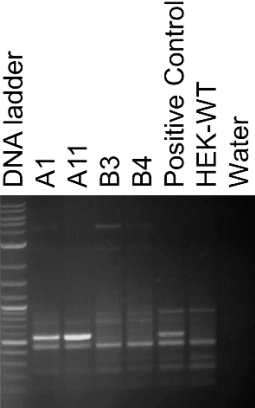
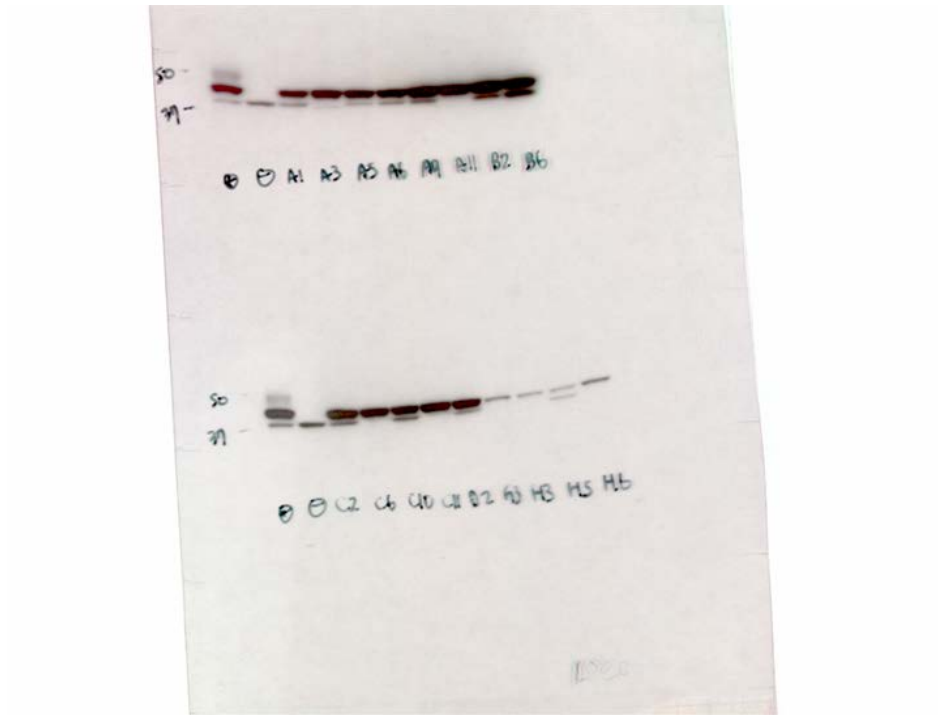


Supplementary Figure S1.

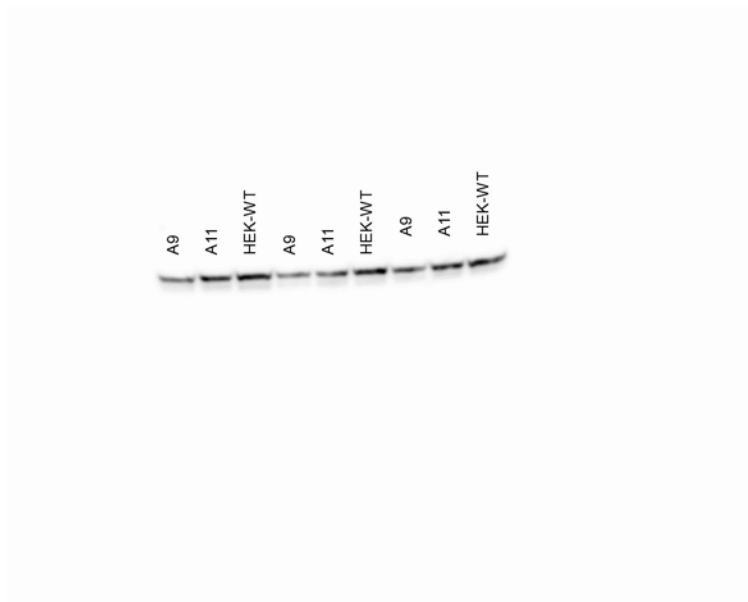
(a)



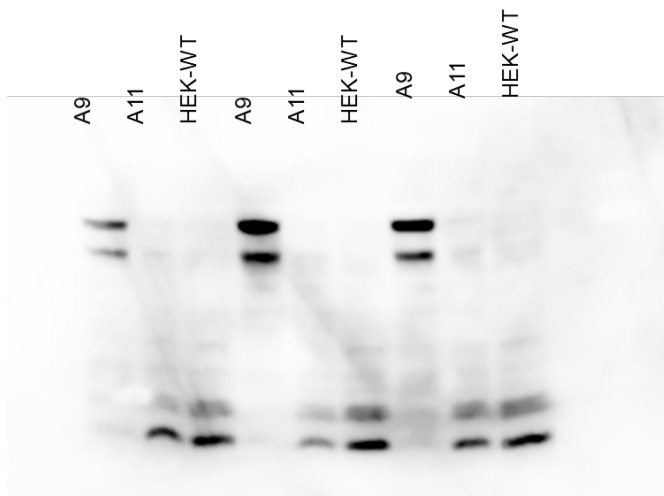
(b)



(c)



(d)



(e)



Supplementary Figure S1. Full-length blots. (a) DNA gels used to determine the successful CRISPR deletion. Expected PCR product size for A and B clones was 551bp and for G clones was 615bp. (b) Blots demonstrate the expression of PKA-C α and DP fusion protein in engineered HEK-DP clones as presented in Figure 1. (c) CREB immunoblot in A9, A11, and HEK-WT performed in triplicate. (d) Phosphorylated CREB in A9, A11, and HEK-WT. (e) α -PKA immunoblot of A9 cells following siRNA treatment (right panel) and corresponding GAPDH immunoblot (left panel).