

THE LANCET

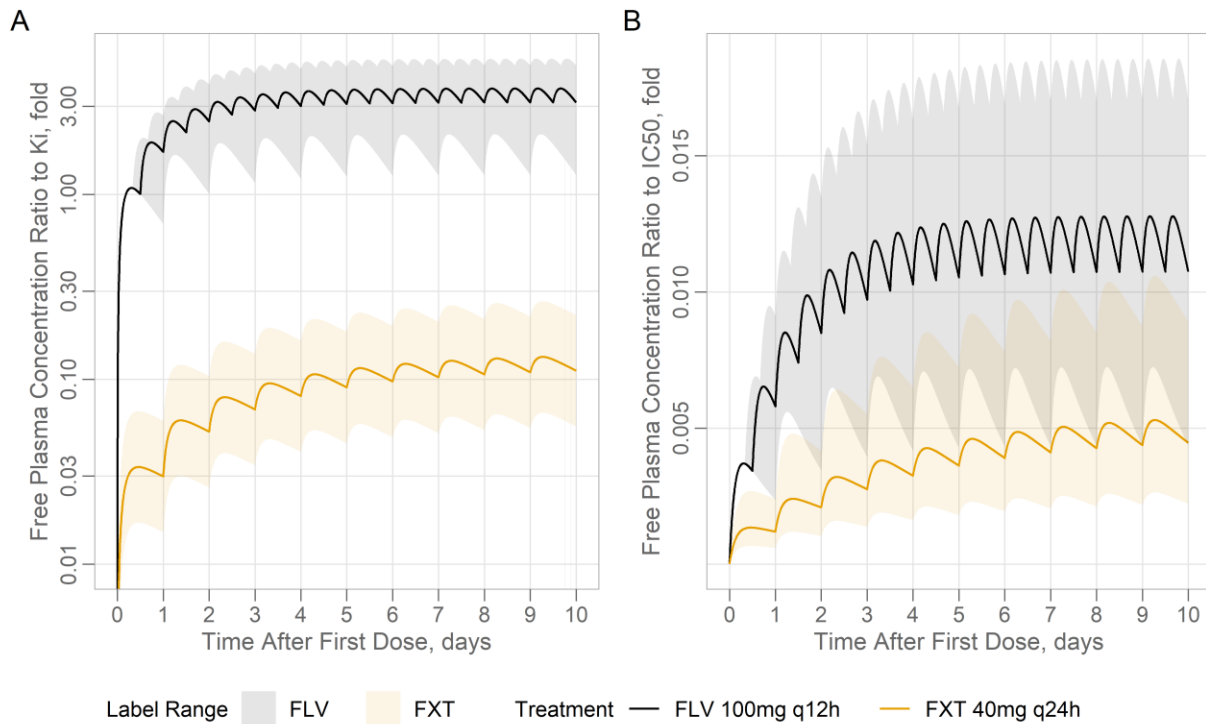
Global Health

Supplementary appendix

This appendix formed part of the original submission. We post it as supplied by the authors.

Supplement to: Dodds MG, Doyle EB, Reiersen AM, Brown F, Rayner CR. Fluvoxamine for the treatment of COVID-19. *Lancet Glob Health* 2022; **10**: e332.

Figure 1: Comparison of Simulated plasma free FLV and FXT concentrations to S1R Ki and HEK293T-ACE2-TMPRSS2 cell IC₅₀



- Caption: Figure 1. ratio of fluvoxamine (FLV; black) and fluoxetine (FXT; yellow) free concentration in plasma to (A) S1R Ki (FLV=15.64 ng/mL and FXT=82.99 ng/mL) [semi-log scale] and (B) HEK293T-ACE2-TMPRSS2 cell IC₅₀ (FLV=4579 ng/mL and FXT=2072 ng/mL) [linear scale]. Shaded intervals represent simulated concentrations following administration of FLV (grey) or FXT (yellow) at label-recommended dosages (FLV 100 mg q24h, 100 mg q12h and 100 mg q8h; FXT 20 mg q24h, 40 mg q24h and 80 mg q24h). FLV clinical dose from the TOGETHER trial (100 mg q12h) and a commonly prescribed dose for FXT (40 mg q24h) are depicted as solid lines.

Legend: FLV=fluvoxamine, FXT=fluoxetine, q8h=every eight hours, q12h=every twelve hours, q24h every twenty-four hours, S1R=Sigma-1 receptor; Ki=inhibitory constant, IC₅₀=concentration of half-maximal inhibition.