

Table S1 The result of prognostic value of clinical variables^a

Variables	Event of patients (n=112)	OS		
		MST (days)	HR (95% CI)	P value
Age (years)				
≤60	20/38	775.1	1	
>60	49/74	550.7	1.636 (0.962–2.780)	0.066
Gender				
Female	36/53	587.4	1	
Male	33/59	630.7	0.855 (0.529–1.382)	0.523
Alcohol history ^b				
No	25/43	678.2	1	
Yes	38/61	559.6	1.276 (0.765–2.128)	0.349
History of chronic pancreatitis ^c				
No	47/79	650.9	1	
Yes	7/9	487.4	1.335 (0.600–2.970)	0.478
Tumor size ^d				
≤4	48/80	517	1	
>4	21/30	614.7	1.002 (0.593–1.694)	0.993
Pathologic stage				
I	4/8	528.5	1	
II	65/104	616.4	1.038 (0.375–2.872)	0.943
Neoplasm histologic grade				
G1 + G2	45/80	696.8	1	
G3 + G4	24/32	433.4	2.267 (0.962–5.341)	0.010
Targeted molecular therapy ^e				
No	24/29	253.0	1	
Yes	41/73	737.4	1.068 (0.095–0.296)	<0.001
Radiation therapy ^f				
No	48/70	561.8	1	
Yes	12/30	705.1	0.527 (0.293–0.947)	0.029
Residual resection ^g				
R0	39/66	700.8	1	
R1 + R2	29/44	432.4	1.945 (1.174–3.223)	0.009

Italic P values indicate statistically significant. ^a, part of data in this table also have been shown in our previous publication; ^b, alcohol history is unavailable in 8 patients; ^c, history of chronic pancreatitis is unavailable in 24 patients; ^d, tumor size is unavailable in 2 patients; ^e, targeted molecular therapy information is unavailable in 10 patients; ^f, radiation therapy is unavailable in 12 patients; ^g, residual resection is unavailable in 10 patients. HR, hazard ratio; MST, mean survival days; OS, overall survival; PDAC, pancreatic ductal adenocarcinoma; HR, hazard ratio; CI, confidence interval.

Table S2 The results of prognostic value from low- and high-expression groups of each SLC in PDAC patients' OS

Gene symbol	P value
SLC10A1	0.646
SLC10A2	0.516
SLC10A3	0.032
SLC10A4	0.183
SLC10A5	0.722
SLC10A6	0.766
SLC10A7	0.890
SLC11A1	0.167
SLC11A2	0.522
SLC12A1	0.328
SLC12A2	0.419
SLC12A3	0.216
SLC12A4	0.057
SLC12A5	0.942
SLC12A6	0.135
SLC12A7	0.918
SLC12A8	0.081
SLC12A9	0.615
SLC13A1	0.404
SLC13A2	0.126
SLC13A3	0.464
SLC13A4	0.619
SLC13A5	0.412
SLC14A1	0.722
SLC14A2	0.546
SLC14A2-AS1	0.322
SLC15A1	0.375
SLC15A2	0.553
SLC15A3	0.109
SLC15A4	0.337
SLC16A1	0.996
SLC16A10	0.998
SLC16A11	0.272
SLC16A12	0.959
SLC16A13	0.268
SLC16A14	0.052
SLC16A1-AS1	0.649
SLC16A2	0.131
SLC16A3	0.259
SLC16A4	0.713
SLC16A5	0.466
SLC16A6	0.325
SLC16A6P1	0.933
SLC16A7	0.131
SLC16A8	0.283
SLC16A9	0.794
SLC17A1	0.531
SLC17A2	0.469
SLC17A3	0.939
SLC17A4	0.471
SLC17A5	0.867
SLC17A6	0.468
SLC17A7	0.636
SLC17A8	0.607
SLC17A9	0.704
SLC18A1	0.106
SLC18A2	0.647
SLC18A3	0.868
SLC18B1	0.376
SLC19A1	0.876
SLC19A2	0.303
SLC19A3	0.002
SLC1A1	0.561
SLC1A2	0.733
SLC1A3	0.178
SLC1A4	0.451
SLC1A5	0.994
SLC1A6	0.792
SLC1A7	0.129
SLC20A1	0.584
SLC20A2	0.556
SLC22A1	0.982
SLC22A10	0.425
SLC22A11	0.269
SLC22A13	0.999
SLC22A14	0.016
SLC22A15	0.445
SLC22A16	0.131
SLC22A17	0.100
SLC22A18	0.985
SLC22A18AS	0.631
SLC22A2	0.859
SLC22A20	0.654
SLC22A23	0.001
SLC22A3	0.355
SLC22A31	0.618
SLC22A4	0.027
SLC22A5	0.726
SLC22A7	0.972
SLC22A9	0.747
SLC23A1	0.387
SLC23A2	0.095
SLC23A3	0.694
SLC24A1	0.344
SLC24A2	0.210
SLC24A3	0.059
SLC24A4	-0.001
SLC25A1	0.234
SLC25A10	0.209
SLC25A11	0.036
SLC25A12	0.852
SLC25A13	0.162
SLC25A14	0.504
SLC25A14P1	0.803
SLC25A15	0.959
SLC25A16	0.919
SLC25A17	0.085
SLC25A18	0.375
SLC25A19	0.122
SLC25A1P1	0.240
SLC25A1P5	0.306
SLC25A2	0.751
SLC25A20	0.956
SLC25A21	0.948
SLC25A21-AS1	0.283
SLC25A22	0.018
SLC25A23	0.784
SLC25A24	0.481
SLC25A24P1	0.736
SLC25A25	0.164
SLC25A25-AS1	0.919
SLC25A26	0.184
SLC25A27	0.664
SLC25A28	0.628
SLC25A29	0.744
SLC25A3	0.329
SLC25A30	0.669
SLC25A30-AS1	0.534
SLC25A32	0.078
SLC25A33	0.925
SLC25A34	0.105
SLC25A35	0.504
SLC25A36	0.390
SLC25A36P1	0.126
SLC25A37	0.810
SLC25A38	0.468
SLC25A39	0.010
SLC25A39P1	0.712
SLC25A3P1	0.984
SLC25A4	0.370
SLC25A40	0.602
SLC25A41	0.499
SLC25A42	0.658
SLC25A43	0.188
SLC25A44	0.118
SLC25A45	0.371
SLC25A46	0.363
SLC25A47	0.962
SLC25A48	0.838
SLC25A5	0.188
SLC25A51	0.009
SLC25A52	0.564
SLC25A53	0.112
SLC25A5-AS1	0.053
SLC25A5P1	0.731
SLC25A5P3	0.977
SLC25A5P5	0.480
SLC25A6	0.890
SLC25A6P2	0.836
SLC26A1	0.677
SLC26A10	0.049
SLC26A11	0.740
SLC26A2	0.084
SLC26A3	0.128
SLC26A4	0.758
SLC26A4-AS1	0.547
SLC26A5	0.611
SLC26A6	0.673
SLC26A7	0.656
SLC26A8	0.396
SLC26A9	0.534
SLC27A1	0.926
SLC27A2	0.966
SLC27A3	0.688
SLC27A4	0.086
SLC27A5	0.615
SLC27A6	0.297
SLC28A1	0.955
SLC28A2	0.022
SLC28A3	0.647
SLC29A1	0.623
SLC29A2	0.564
SLC29A3	0.119
SLC29A4	0.811
SLC2A1	0.455
SLC2A10	0.256
SLC2A11	0.847
SLC2A12	0.100
SLC2A13	0.245
SLC2A14	0.161
SLC2A1-AS1	0.781
SLC2A2	0.856
SLC2A3	0.993
SLC2A3P2	0.462
SLC2A3P4	0.244
SLC2A4	0.255
SLC2A4FRG	0.382
SLC2A5	0.003
SLC2A6	0.151
SLC2A7	0.356
SLC2A8	0.256
SLC2A9	0.006
SLC30A1	0.539
SLC30A10	0.217
SLC30A2	0.587
SLC30A3	0.319

Table S2 (continued)

Table S2 (continued)

Gene symbol	P value
SLC30A4	0.012
SLC30A5	0.639
SLC30A6	0.810
SLC30A7	0.738
SLC30A8	0.877
SLC30A9	0.068
SLC31A1	0.894
SLC31A1P1	0.873
SLC31A2	0.003
SLC32A1	0.576
SLC33A1	0.550
SLC34A1	0.313
SLC34A2	0.311
SLC34A3	0.279
SLC35A1	0.292
SLC35A2	0.222
SLC35A3	0.457
SLC35A4	0.665
SLC35A5	0.930
SLC35B1	0.372
SLC35B2	0.015
SLC35B3	0.432
SLC35B4	0.029
SLC35C1	0.626
SLC35C2	0.260
SLC35D1	0.304
SLC35D2	0.520
SLC35D3	0.758
SLC35E1	0.979
SLC35E1P1	0.365
SLC35E2	0.030
SLC35E2B	0.741
SLC35E3	0.237
SLC35E4	0.087
SLC35F1	0.396
SLC35F2	0.214
SLC35F3	0.401
SLC35F4	0.715
SLC35F5	0.482
SLC35F6	0.857
SLC35G1	0.823
SLC35G2	0.784
SLC35G5	0.766
SLC35G6	0.880
SLC36A1	0.068
SLC36A2	0.229
SLC36A4	0.803
SLC37A1	0.618
SLC37A2	0.215
SLC37A3	0.827
SLC37A4	0.842
SLC38A1	0.922
SLC38A10	0.890
SLC38A11	0.001
SLC38A2	0.473
SLC38A3	0.408
SLC38A4	0.701
SLC38A5	0.223
SLC38A6	0.461
SLC38A7	0.494
SLC38A8	0.062
SLC38A9	0.441
SLC39A1	0.444
SLC39A10	0.116
SLC39A11	0.030
SLC39A12	0.968
SLC39A13	0.485
SLC39A14	0.698
SLC39A2	0.315
SLC39A3	0.192
SLC39A4	0.289
SLC39A5	0.949
SLC39A6	0.204
SLC39A7	0.712
SLC39A8	0.857
SLC39A9	0.050
SLC3A1	0.520
SLC3A2	0.114
SLC40A1	0.276
SLC41A1	0.375
SLC41A2	0.402
SLC41A3	0.295
SLC43A1	0.513
SLC43A2	0.580
SLC43A3	0.508
SLC44A1	0.921
SLC44A2	0.001
SLC44A3	0.812
SLC44A4	0.789
SLC44A5	0.267
SLC45A1	0.396
SLC45A2	0.230
SLC45A3	0.943
SLC45A4	0.044
SLC46A1	0.674
SLC46A2	0.015
SLC46A3	0.101
SLC47A1	<0.001
SLC47A1P1	0.396
SLC47A2	0.186
SLC48A1	0.141
SLC4A1	0.786
SLC4A10	0.214
SLC4A11	0.033
SLC4A11AP	0.571
SLC4A11APP1	0.808
SLC4A2	0.633
SLC4A3	0.314
SLC4A4	0.798
SLC4A5	0.582
SLC4A7	0.026
SLC4A8	0.088
SLC4A9	0.642
SLC50A1	0.185
SLC51A	0.425
SLC51B	0.517
SLC52A1	0.044
SLC52A2	0.050
SLC52A3	0.201
SLC5A1	0.461
SLC5A10	0.958
SLC5A11	0.541
SLC5A12	0.204
SLC5A2	0.968
SLC5A3	0.569
SLC5A4	0.302
SLC5A5	0.564
SLC5A6	0.362
SLC5A7	0.469
SLC5A8	0.662
SLC5A9	0.972
SLC6A1	0.121
SLC6A11	0.182
SLC6A12	0.977
SLC6A13	0.137
SLC6A14	0.139
SLC6A15	0.594
SLC6A16	0.785
SLC6A17	0.267
SLC6A18	0.121
SLC6A19	0.227
SLC6A1-AS1	0.049
SLC6A2	0.729
SLC6A20	0.366
SLC6A21P	0.315
SLC6A3	0.359
SLC6A4	0.253
SLC6A6	0.151
SLC6A7	0.979
SLC6A8	0.421
SLC6A9	0.978
SLC7A1	0.584
SLC7A10	0.829
SLC7A11	0.663
SLC7A11-AS1	0.223
SLC7A13	0.641
SLC7A14	0.261
SLC7A2	0.238
SLC7A3	0.242
SLC7A4	0.323
SLC7A5	0.118
SLC7A5P1	0.959
SLC7A6	0.138
SLC7A6OS	0.036
SLC7A7	0.492
SLC7A8	0.146
SLC7A9	0.573
SLC8A1	0.055
SLC8A1-AS1	0.736
SLC8A2	0.504
SLC8A3	0.577
SLC8B1	0.468
SLC9A1	0.186
SLC9A2	0.179
SLC9A3	0.071
SLC9A3R1	0.729
SLC9A3R2	0.248
SLC9A4	0.239
SLC9A5	0.370
SLC9A6	0.692
SLC9A7	0.903
SLC9A7P1	0.495
SLC9A8	0.368
SLC9A9	0.248
SLC9B1	0.980
SLC9B2	0.512
SLC9C1	0.734
SLC9C2	0.126
SLCO1A2	0.243
SLCO1B1	0.398
SLCO1B3	0.192
SLCO1B7	0.082
SLCO1C1	0.617
SLCO2A1	0.436
SLCO2B1	0.002
SLCO3A1	0.157
SLCO4A1	0.438
SLCO4A1-AS1	0.759
SLCO4C1	0.076
SLCO5A1	0.020

SLC, solute carrier; PDAC, pancreatic ductal adenocarcinoma; OS, overall survival.

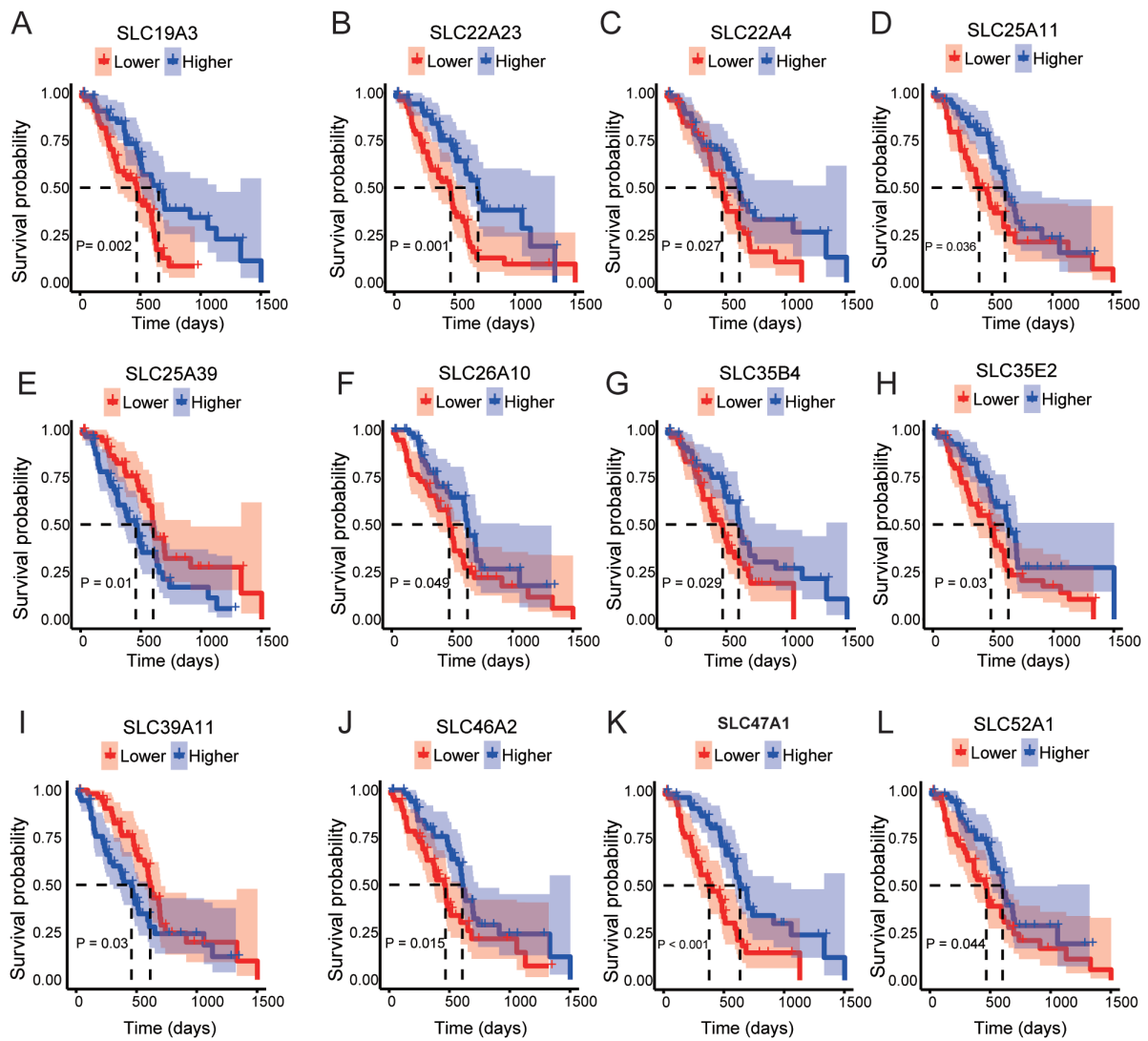


Figure S1 Kaplan-Meier survival curves for SLC genes in PDAC. Overall Survival stratified by (A) *SLC19A3*; (B) *SLC22A23*; (C) *SLC22A4*; (D) *SLC25A11*; (E) *SLC25A39*; (F) *SLC26A10*; (G) *SLC35B4*; (H) *SLC35E2*; (I) *SLC39A11*; (J) *SLC46A2*; (K) *SLC47A1*; (L) *SLC52A1*. SLC, solute carrier; PDAC, pancreatic ductal adenocarcinoma.

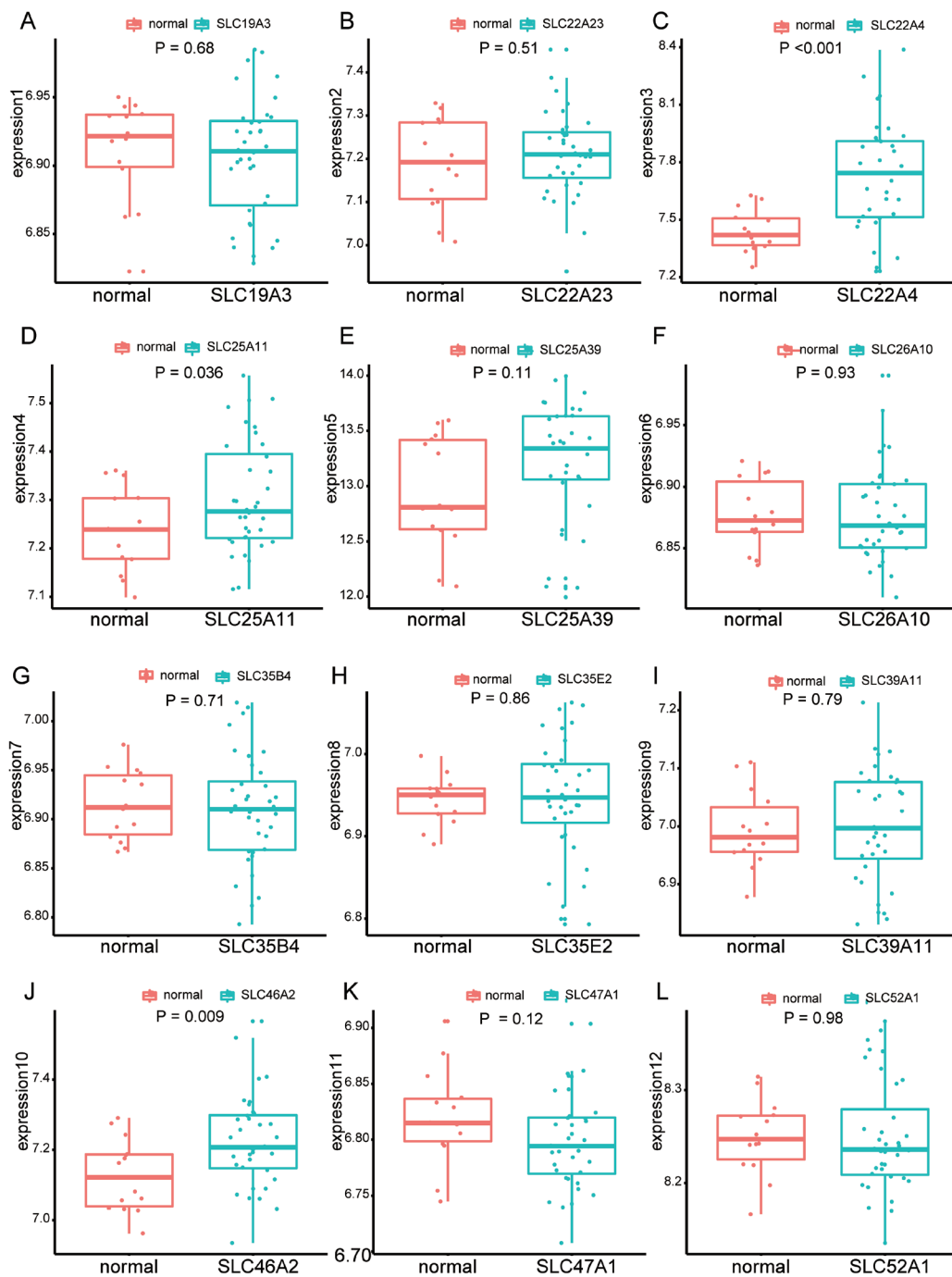


Figure S2 Gene expression level distribution of SLC genes in PDAC peripheral blood and normal peripheral blood of GSE49641. (A) *SLC19A3*; (B) *SLC22A23*; (C) *SLC22A4*; (D) *SLC25A11*; (E) *SLC25A39*; (F) *SLC26A10*; (G) *SLC35B4*; (H) *SLC35E2*; (I) *SLC39A11*; (J) *SLC46A2*; (K) *SLC47A1*; (L) *SLC52A1*. SLC, solute carrier; PDAC, pancreatic ductal adenocarcinoma.

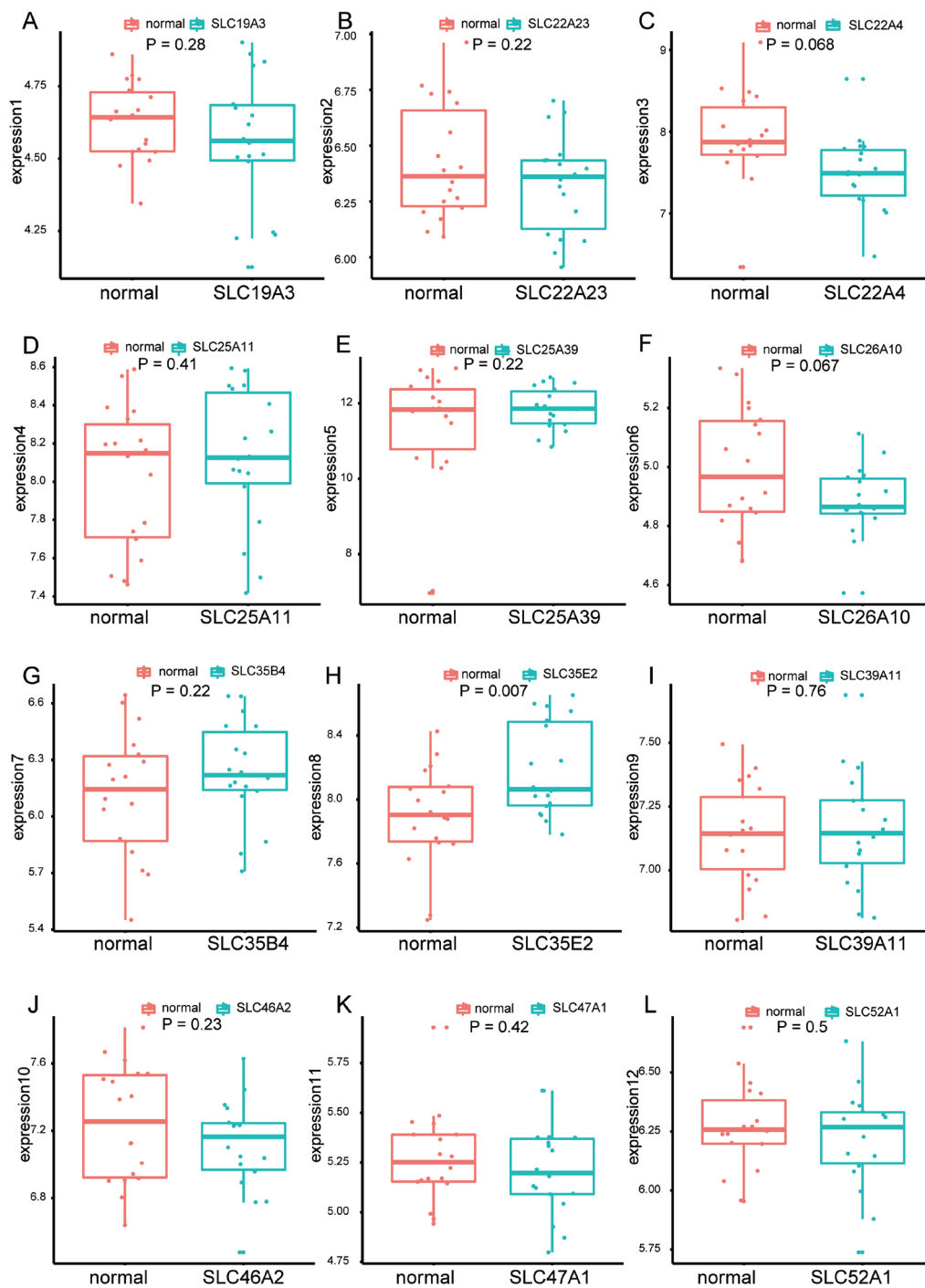


Figure S3 Gene expression level distribution of SLC genes in PDAC peripheral blood and normal peripheral blood of GSE49641. (A) *SLC19A3*; (B) *SLC22A23*; (C) *SLC22A4*; (D) *SLC25A11*; (E) *SLC25A39*; (F) *SLC26A10*; (G) *SLC35B4*; (H) *SLC35E2*; (I) *SLC39A11*; (J) *SLC46A2*; (K) *SLC47A1*; (L) *SLC52A1*. SLC, solute carrier; PDAC, pancreatic ductal adenocarcinoma.