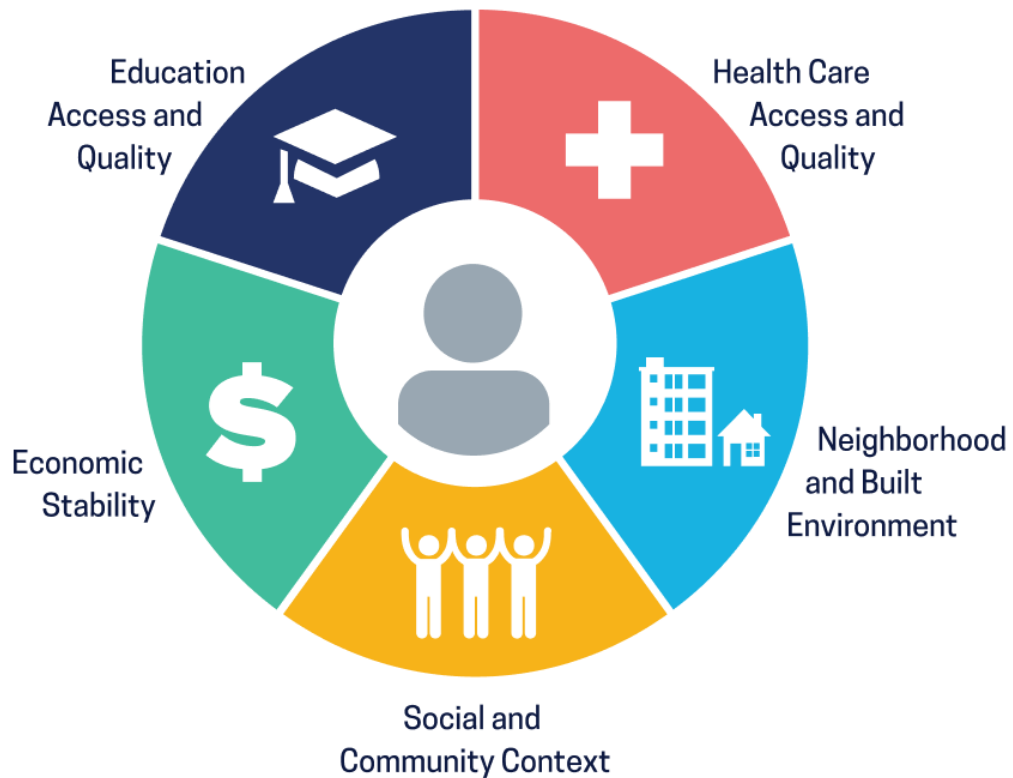


**SUPPLEMENTAL MATERIAL**

## Supplemental Figures

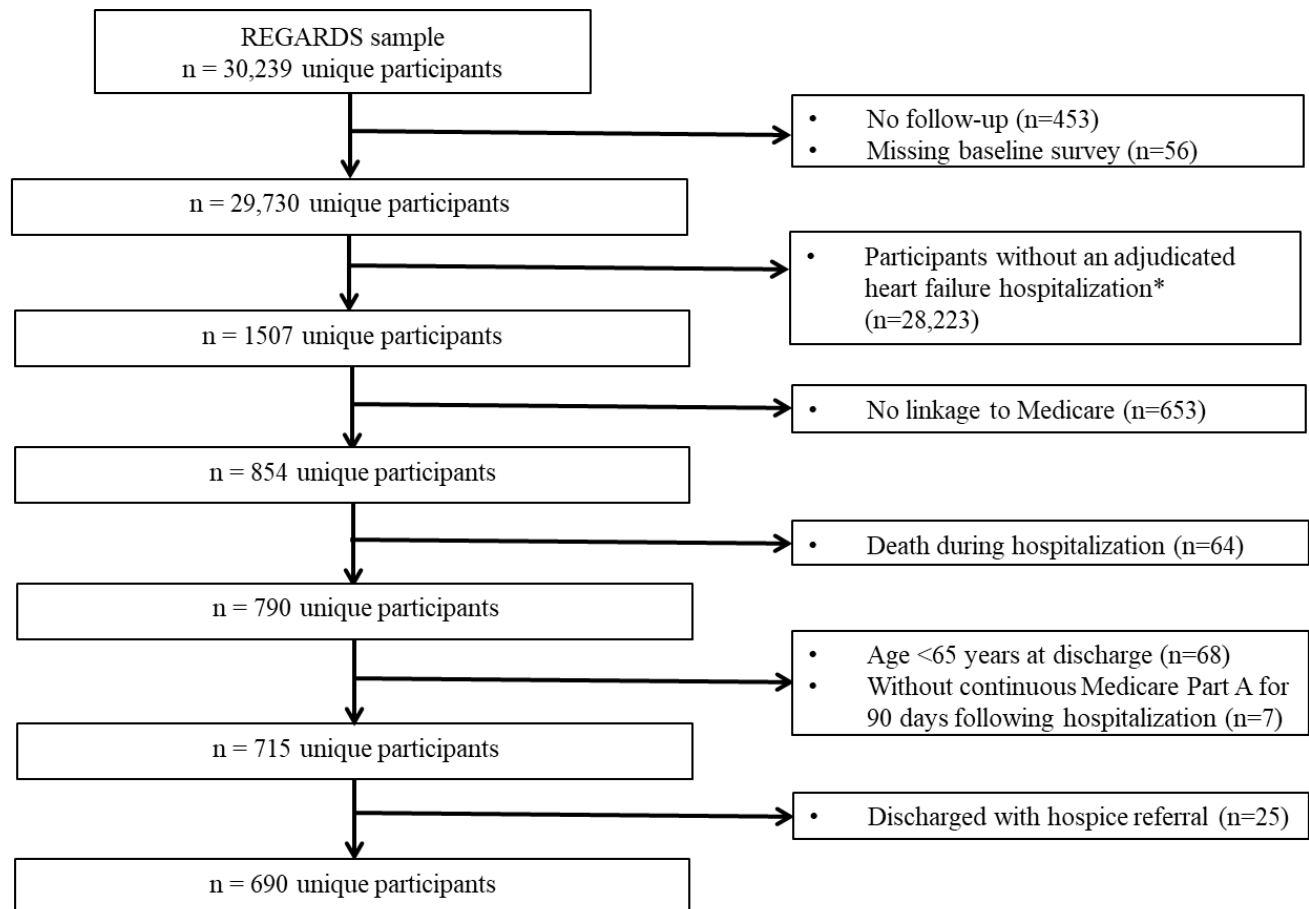
### Supplemental Figure 1. Healthy People 2030 Framework

# Social Determinants of Health



Healthy People 2030, U.S. Department of Health and Human Services, Office of Disease Prevention and Health Promotion. Retrieved June 8, 2021, from <https://health.gov/healthypeople/objectives-and-data/social-determinants-health>

## Supplemental Figure 2. Study Flow Diagram



**Abbreviations:** SDOH – Social determinants of health; HF – Heart Failure; REGARDS- Reasons for geographic and racial differences in stroke  
\*First adjudicated heart failure admission in REGARDS- may include participants with evidence of prior HF



## Supplemental Table 1. Results from Competing Risk Analyses

Crude and Fully Adjusted Sub-distribution HRs of 30-Day Readmission Among REGARDS Participants Hospitalized for HF

SDOH	Crude			Model 1			Model 2		
	SHR	95% CI	P-value	SHR	95% CI	P-value	SHR	95% CI	P-value
Education	1.08	(0.75, 1.56)	0.68	1.08	(0.72, 1.60)	0.71	1.062994	(0.71, 1.59)	0.765
HPSA	1.46	(1.07, 2.00)	0.02	1.46	(1.05, 2.02)	0.03	1.341765	(0.95, 1.9)	0.097
Low income	0.95	(0.68, 1.33)	0.77	0.92	(0.63, 1.34)	0.67	0.875292	(0.6, 1.28)	0.491
Poor public health infrastructure	0.9	(0.65, 1.25)	0.53	0.86	(0.62, 1.21)	0.39	0.827374	(0.55, 1.24)	0.361
Black race	1.16	(0.84, 1.59)	0.37	1.13	(0.78, 1.64)	0.53	1.030328	(0.7, 1.51)	0.879
Rural residence	1.23	(0.76, 2.00)	0.4	1.19	(0.72, 1.97)	0.5	1.116862	(0.65, 1.92)	0.688
Social Isolation-care	0.95	(0.59, 1.53)	0.82	0.9	(0.55, 1.47)	0.68	0.8321	(0.5, 1.4)	0.487
Social Isolation-friends/family	1.31	(0.85, 2.02)	0.23	1.27	(0.81, 2.00)	0.3	1.241196	(0.77, 2)	0.374
Zip code level poverty	1.08	(0.74, 1.57)	0.69	0.98	(0.64, 1.51)	0.94	0.974542	(0.63, 1.51)	0.908

*Crude – Individual SDOH: Education, HPSA, low income, poor public health infrastructure, black race, rural residence, social network, social isolation, zip code level poverty*

*Model 1- adjusted for other SDOH*

*Model 2 - adjusted for other SDOH, age, Charlson comorbidity index Current smoking, Impaired Cognition, discharge from nursing home, length of stay, and bed size of admitting hospital*