

Supporting information

Activation of the NLRP3 Inflammasome and Elevation of Interleukin-1 β Secretion in Infection by Severe Fever with Thrombocytopenia Syndrome Virus

Zhifeng Li^{1,2}, Jianli Hu², Changjun Bao², Chengfeng Gao¹, Nan Zhang², Carol J. Cardona³, and Zheng Xing^{3*}

1 Medical School and Jiangsu Provincial Key Laboratory of Medicine, Nanjing University, Nanjing, China

2 Jiangsu Provincial Center for Disease Prevention and Control, Nanjing, China

3 Department of Veterinary Biomedical Sciences, College of Veterinary Medicine, University of Minnesota at Twin Cities, Saint Paul, MN, USA

Table S1 Nucleotide sequences of primers and probes used in the this study

Genes	Primers	Sequences (5'-3')
SFTSV	Forward Primer	TAAACTTCTGTCTTGCTGGCTCC
	Reverse Primer	TGGCAAGATGCCTTCACCA
	MGB Probe	CGCATCTTCACATTGAT
pro-IL-1 β	Forward Primer	CACGATGCACCTGTACGATCA
	Reverse Primer	AGCACTGAAAGCATGA
GAPDH	Forward Primer	ACAGTCAGCCGCATCTTCTT
	Reverse Primer	ACGACCAAATCCGTTGACTC

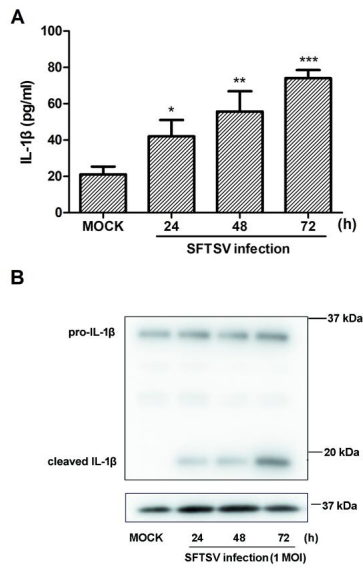


Figure S1. The production and secretion of IL-1 β are induced by SFTSV in PBMCs. PBMCs were infected by the SFTSV (MOI = 1) for 24, 48 and 72 h. Supernatants were analyzed by ELISA for IL-1 β secretion (**A**); Cell lysates were analyzed by western blot analysis using an antibody specific for IL-1 β (**B**).

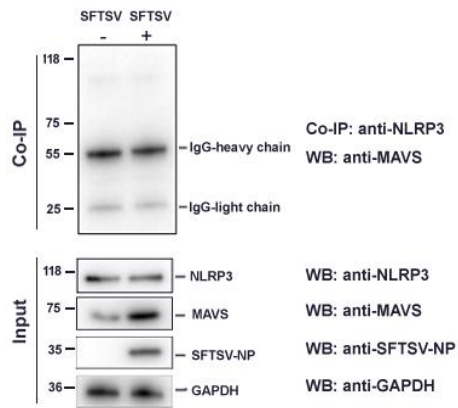


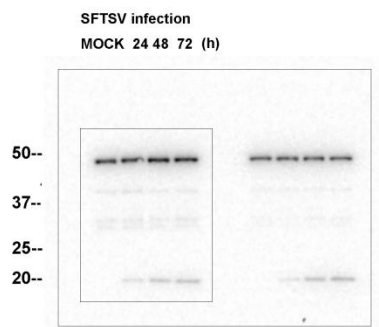
Figure S2. Interaction of NLRP3 and MAVS in PBMCs infected with SFTSV. Coimmunoprecipitation of NLRP3 and MAVS in SFTSV-infected PBMCs was shown. The cells were either mock-infected or infected with SFTSV for 48 hrs. The cell lysates were immunoprecipitated by an anti-NLRP3 antibody, and the immunoprecipitates were subjected to western blot analysis with an anti-MAVS antibody. The membrane was also blotted with anti-NLRP3, anti-MAVS and anti-SFTSV-NP antibodies as the input.

Figure S3. Original western blot images from figures used in this study

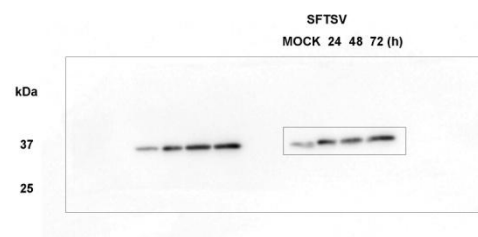
The blots were cut according to the molecular weight of the target antigens prior to hybridisation with antibodies during blotting. The edges of the blots were outlined using solid black lines.

Figure 2G

caspace1



pro-IL-1 β



GAPDH

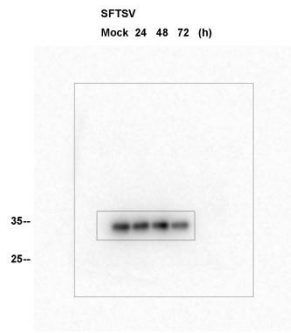
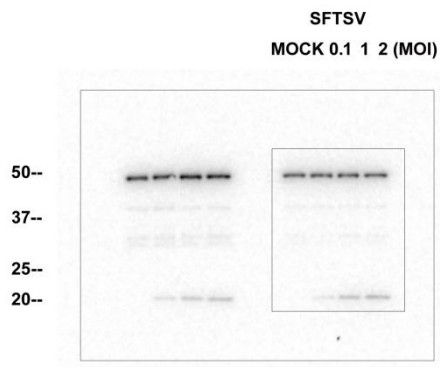


Figure 2H

caspase 1



pro-IL-1 β



GAPDH

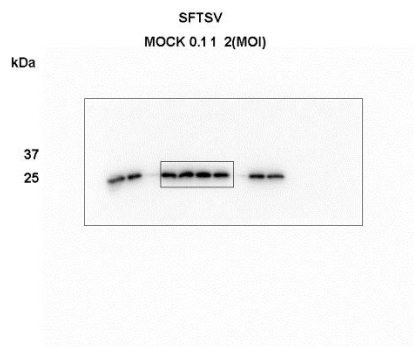
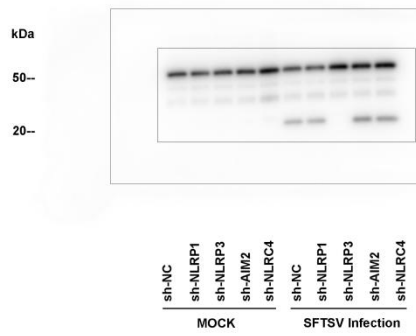
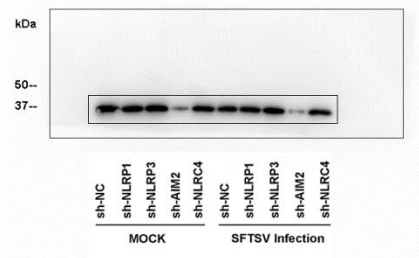


Figure 4C

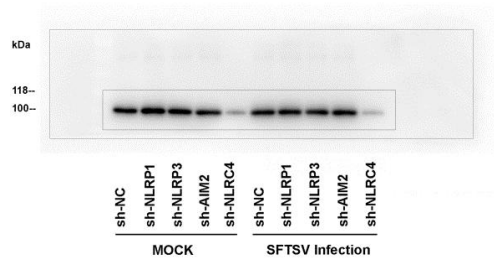
Caspase-1



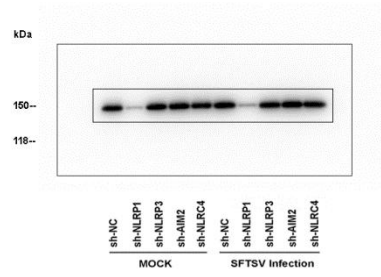
AIM-2



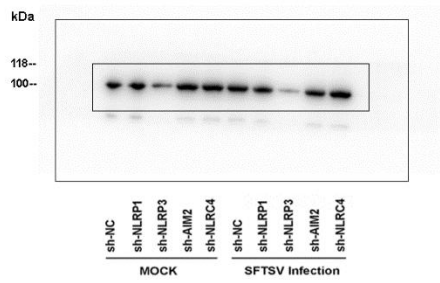
NLRC4



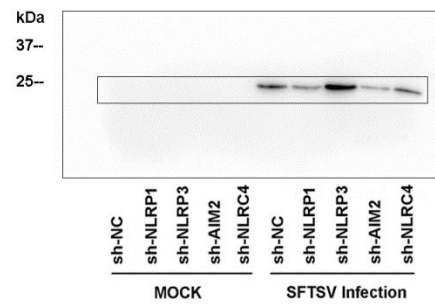
NLRP1



NLPR3



SFTSV-NP



GAPDH

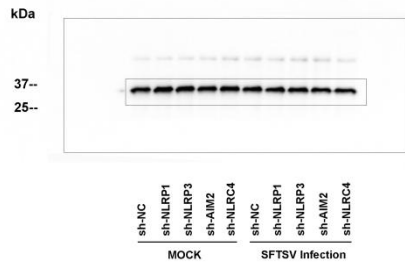
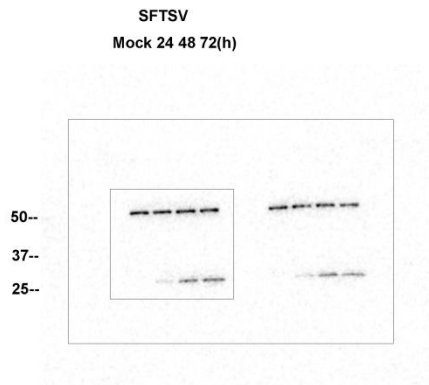


Figure 6E

GSDMD



GAPDH

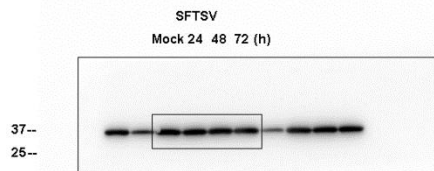
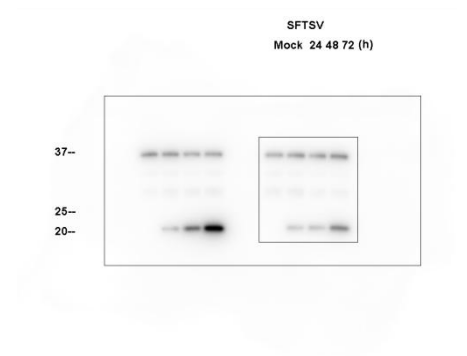


Figure S1B

IL-1 β



GAPDH

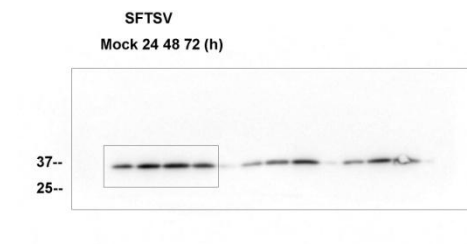
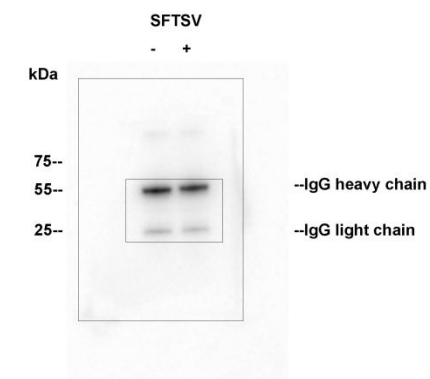
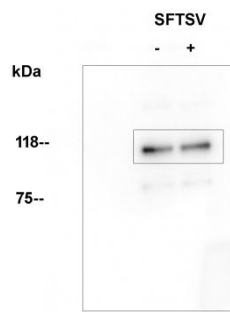


Figure S2

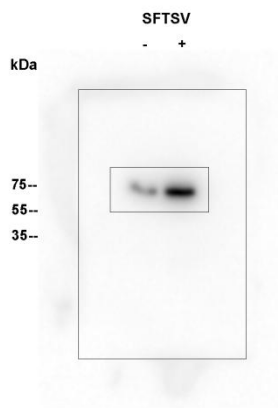
Heavy chain and light chain of IgG



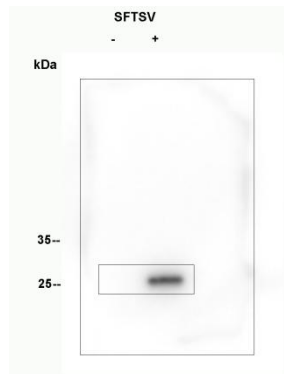
NLPR3



MAVS



SFTSV-NP



GAPDH

