

Supplementary Information for

Co-translational interaction of human EBP50 and ezrin overcomes masked binding site during complex assembly

Krishnendu Khan^a, Briana Long^a, Camelia Baleanu Gogonea^b, Valentin Gogonea^b, Gauravi M. Deshpande^c, Kommireddy Vasu^a, Paul L. Fox^{a,b,1}

^aDepartment of Cardiovascular and Metabolic Sciences, Lerner Research Institute, Cleveland Clinic, Cleveland, OH 44195, USA; ^bDepartment of Chemistry, Cleveland State University, Cleveland, OH 44115, USA; ^cImaging Core, Lerner Research Institute, Cleveland Clinic, Cleveland, OH 44195, USA

¹Paul L. Fox
Email: foxp@ccf.org

This PDF file includes:

Figure S1

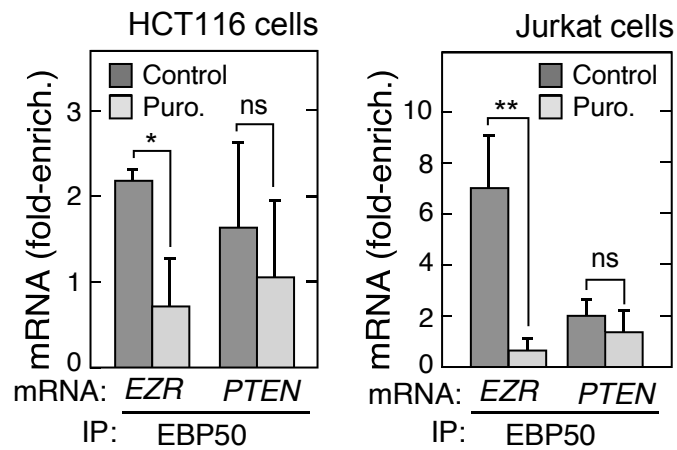


Fig. S1. Co-translational interaction of EBP50 and ezrin in multiple cell types, HCT116 (left) and Jurkat (right) cells were subjected to anti-EBP50 RIP-qRT-PCR with probes for *EZR* and *PTEN* mRNAs. The experiments were done in the absence and presence of puromycin, and shown as fold-enrichment compared to isotype-specific IgG RIP-qRT-PCR. Mean + sd, n = 3; *p < 0.05, **p < 0.01, ns = not significant.