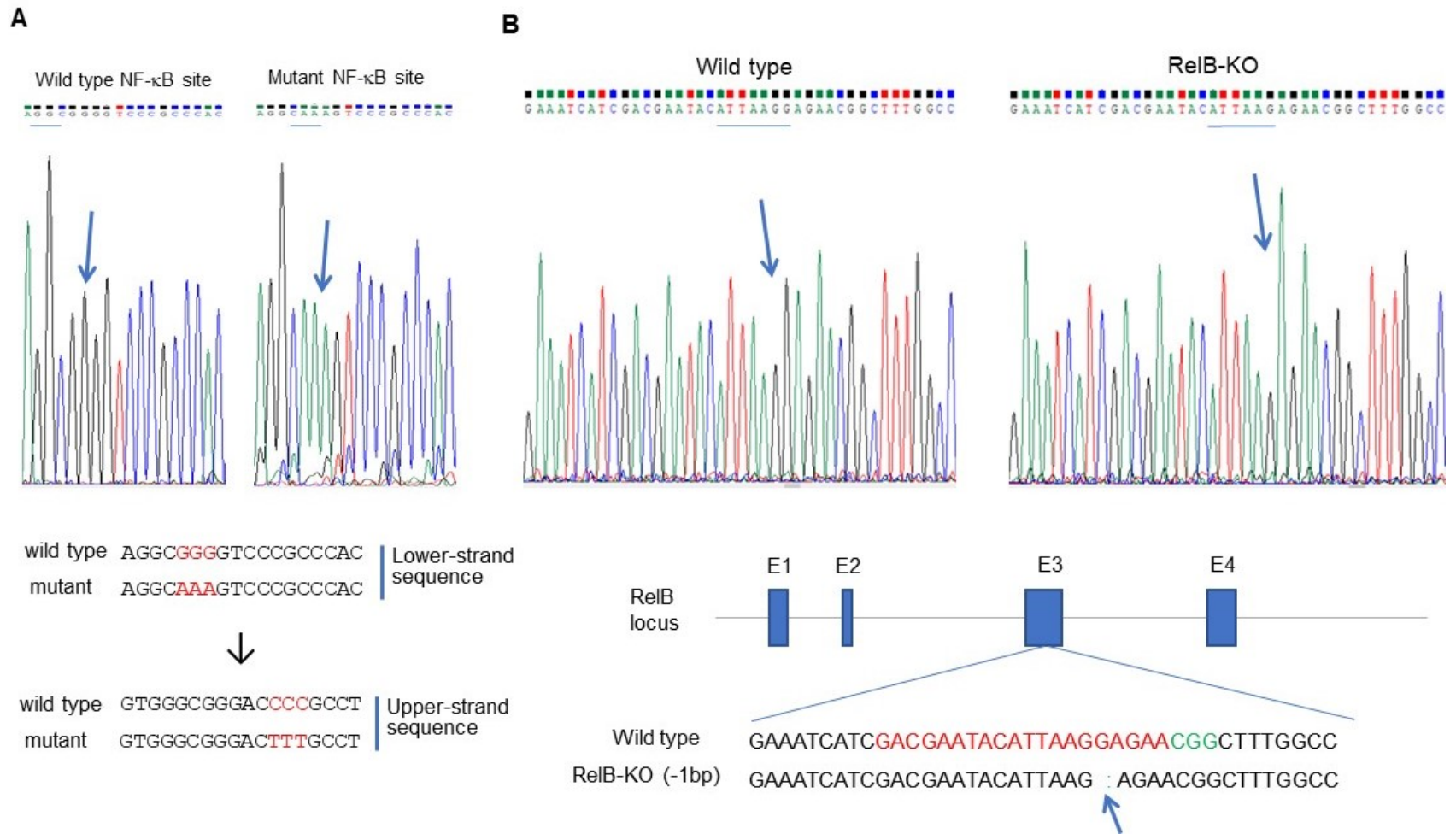


## Additional file 3



**Fig. S3. Confirmation of plasmid constructs by DNA sequencing.** **a** The proximal NF- $\kappa$ B binding site identified in the human *CD247* gene was mutated in the *luciferase* reporter plasmid. DNA sequencing was performed using a reverse primer, and the relative upper-strand sequence was converted to the lower panel. Arrows indicate the mutant site in the up panel. **b** RelB was knocked out in RM-1 cells using a CRISPR/Cas9-mediated gene edition system. Arrows indicate that the “G” was deleted in the RelB-KO construct, the sgRNA binding site is shown in green, and the target sequence is shown in red.