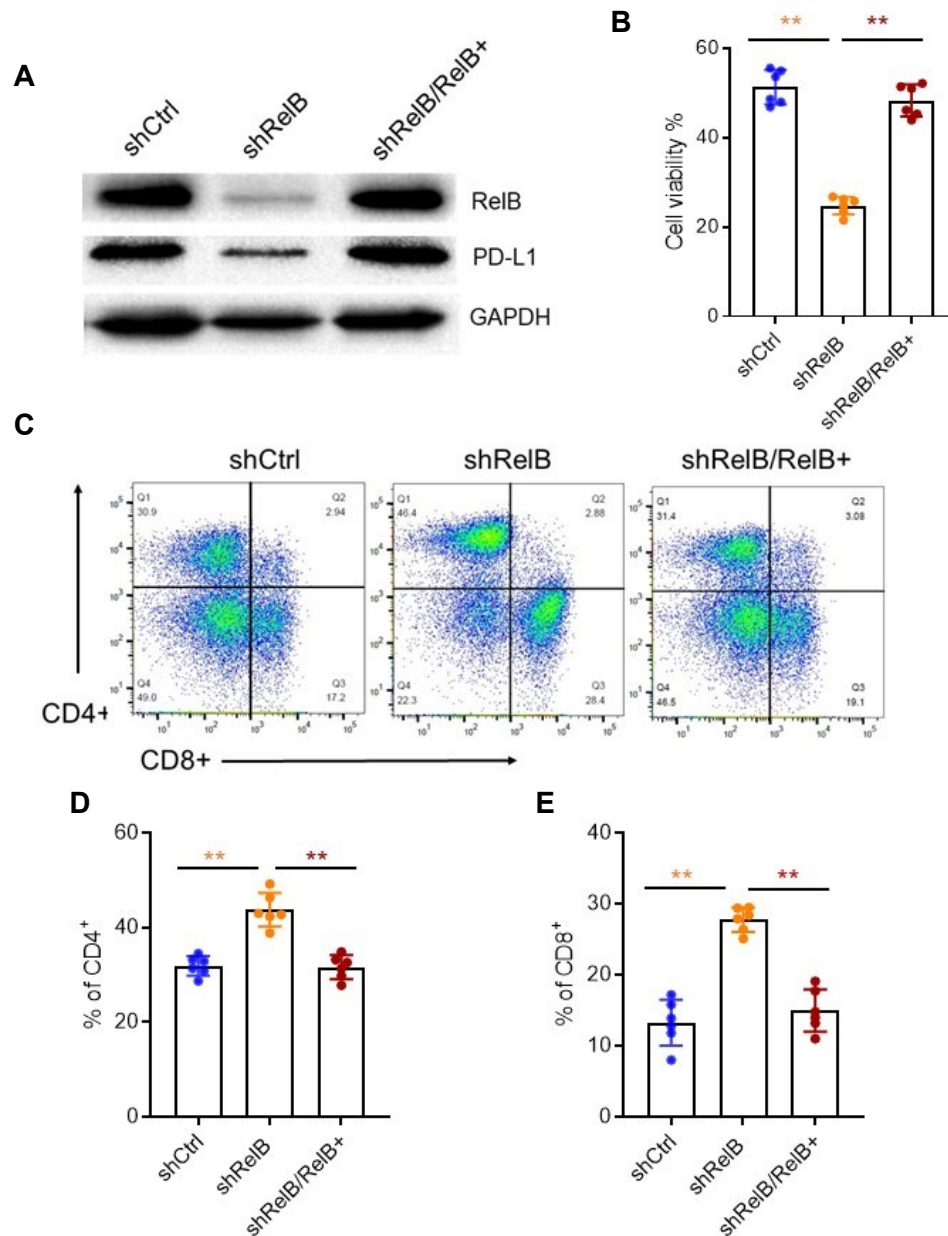


## Additional file 5



**Fig. S5. Reversible immune evasion of PCa cells by restoring RelB.** **a** A RelB cDNA expression construct was transiently transfected into the lentivirus-mediated RelB-silenced PC-3 cells. The cellular levels of RelB and PD-L1 were quantified by western blots, **b** PC-3 cells were cocultured with T cells isolated from blood samples donated from healthy donors. The survival fraction of the cancer cells was assessed using a CCK-8 assay. **c-e** In addition, after coculture, the percentages of CD4<sup>+</sup> and CD8<sup>+</sup> T cells were analysed by flow cytometry. \*\*( $p < 0.01$ ) shows significance between the two groups as indicated.