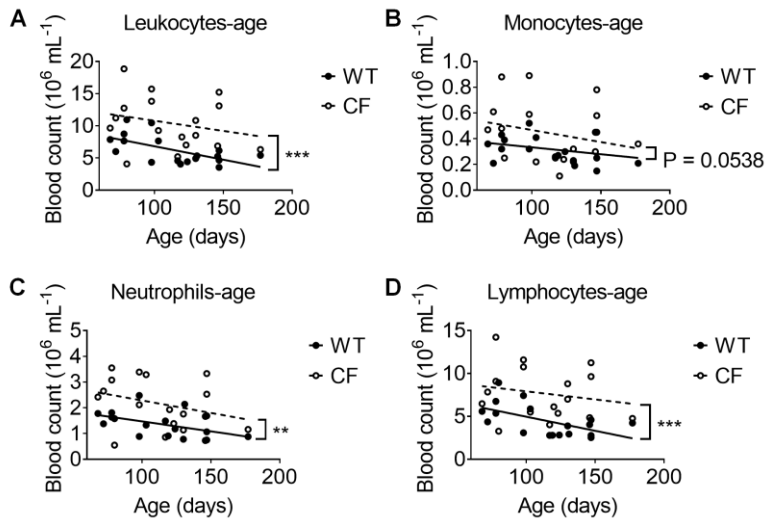


1 **Supplemental Materials**

2 **Supplemental Figures**

3 **Supplemental Figure 1**



4

5 **SUPPLEMENTAL FIGURE 1. Hematology for total leukocytes (A), monocytes (B),**

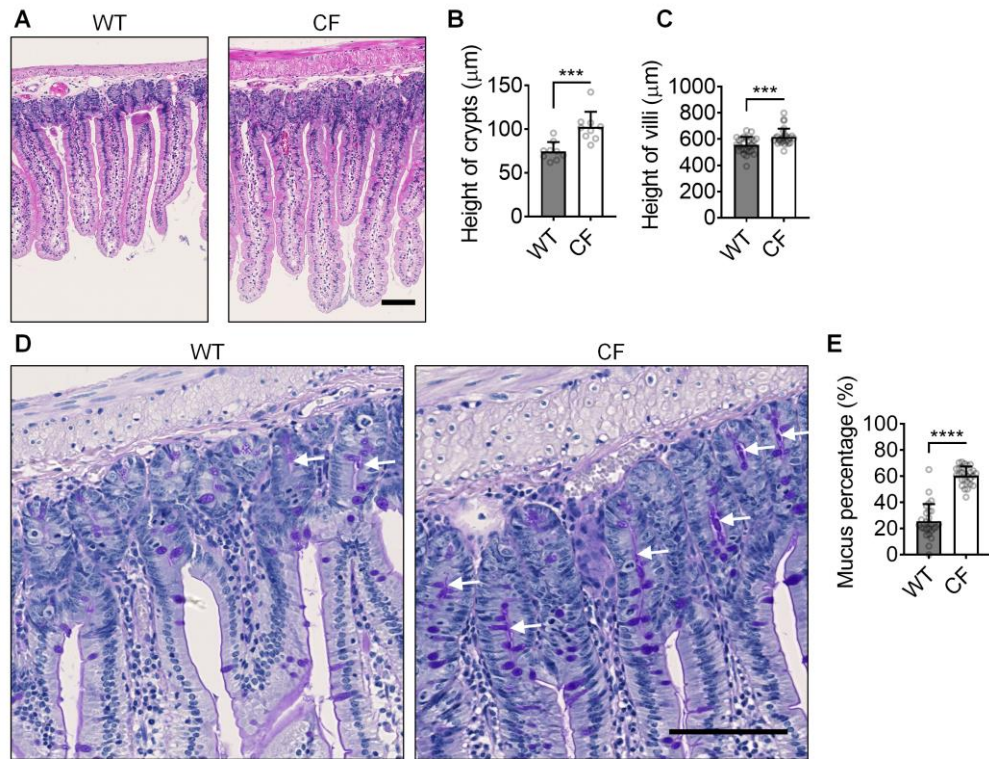
6 **neutrophils (C), and lymphocytes (D) in CF mice (n=17) compared to WT controls (n=18) at**

7 **different ages. **p<0.01, ***p<0.001 by the F-test comparing the elevations or intercepts of WT**

8 **and CF linear regressions.**

9

10 Supplemental Figure 2

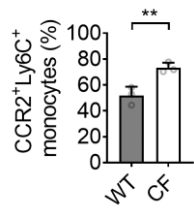


11

12 **SUPPLEMENTAL FIGURE 2.** Intestinal inflammation in $\text{CFTR}^{\Delta\text{F508}}$ mice. (A) Typical H&E
13 staining images of intestines from both WT and $\text{CFTR}^{\Delta\text{F508}}$ mice. (B-C) Crypt (B, Mean \pm SD of
14 $n=9$) and villi (C, Mean \pm SD of $n=27$) height of small intestine from $\text{CFTR}^{\Delta\text{F508}}$ mice compared to
15 WT controls. (D) Typical PAS staining images of intestines from both WT and $\text{CFTR}^{\Delta\text{F508}}$ mice.
16 White arrows indicate mucus in crypts. (E) Percentage of intestinal crypts that contain mucus in
17 them. Mean \pm SD of $n=27$. *** $p<0.001$, **** $p<0.0001$ in the student T-test. Scale bars are 100
18 μm .

19

20 Supplemental Figure 3



21

22 SUPPLEMENTAL FIGURE 3. Percentage of CCR2⁺Ly6C⁺ cells in monocytes purified from

23 WT or CF bone marrow. Mean±SD for n=3 each.

24 **Supplemental Table**

25 **SUPPLEMENTAL TABLE 1.** Reconstitution rate of monocytes after BMT.

	WT to KO (700 rads)	WT to WT (1100 rads)	KO to WT (1100 rads)
BM	67±2%	99.8±0.1%	99±1%
Blood	78±15%	99.9±0.0%	98±2%
Lung	80±13%	99.05±0.6%	97±3%
Intestinal lamina propria	60±6%	89±1%	86±4%

26

27