

## **Risk factors for generalization in patients with ocular myasthenia gravis: a multicenter retrospective cohort study**

Rong-Jing Guo, Ting Gao, Zhe Ruan, Hong-Yu Zhou, Feng Gao, Quan Xu, Li-Ping Yu, Song-Di Wu, Tao Lei, Huan-Huan Li, Chao Sun, Min Zhang, Yan-Wu Gao, Xiao-Dan Lu, Yong-Lan Tang, Bao-li Tang, Fei-Yan Huo, Ying Zhu, Zhu-Yi Li, Ting Chang

Rong-Jing Guo, Ting Gao, Zhe Ruan, Hong-Yu Zhou and Feng Gao are co-first authors.

### **Author Affiliations:**

**Department of Neurology, Tangdu Hospital, the Fourth Military Medical University, Xi'an, China**

Rong-Jing Guo, Ting Gao, Zhe Ruan, Huan-Huan Li, Chao Sun, Min Zhang, Yan-Wu Gao, Xiao-Dan Lu, Yong-Lan Tang, Bao-Li Tang, Fei-Yan Huo, Ying Zhu, Zhu-Yi Li & Ting Chang

**Department of Neurology, West China Hospital, Sichuan University, Chengdu, China**

Hong-Yu Zhou

**Department of Neuroimmunology, Henan Institute of Medical and Pharmaceutical Sciences, Zhengzhou University, Zhengzhou, China**

Feng Gao

**Department of Thoracic surgery, Jiangxi Provincial People's Hospital, Nanchang, China**

Quan Xu

**Department of Neurology, Xianyang First People's Hospital, Xianyang, China**

Li-Ping Yu

**Department of Neurology, Xi'an No.1 Hospital, Xi'an, China**

Song-Di Wu

**Department of Neurology, Xi'an Fourth Hospital, Xi'an, China**

Tao Lei

### **Corresponding Author:**

Ting Chang, Department of Neurology, Tangdu Hospital, the Fourth Military Medical University, Xi'an 710038, China [changting1981@163.com](mailto:changting1981@163.com)

or Zhu-Yi Li, Department of Neurology, Tangdu Hospital, the Fourth Military Medical University, Xi'an 710038, China [lizhuyiafu@163.com](mailto:lizhuyiafu@163.com)

**Table S1. Ethics Committees of each medical center**

Master research center	Ethics Committee of Tangdu Hospital, the Fourth Military Medical University
Sub-centers	Ethics Committee of West China Hospital of Sichuan University
	Ethics Committee of Henan Institute of Medical and Pharmaceutical Sciences
	Ethics Committee of Jiangxi Provincial People's Hospital
	Ethics Committee of Xianyang First People's Hospital
	Ethics Committee of Xi'an No.1 Hospital
	Ethics Committee of Xi'an Fourth Hospital

**Table S2. Baseline characteristics of the study population in the imputed datasets**

	<b>Overall (n=572)</b>	<b>OMG-M (n=428)</b>	<b>OMG-G (n=144)</b>	<b>P-value</b>
<b>Sex, n (%)</b>				0.27
Male	303 (53.0)	233 (54.4)	70 (48.6)	
Female	269 (47.0)	195 (45.6)	74 (51.4)	
<b>Onset age, years, mean ± SD</b>	(45.5 ± 19.8)	(42.8±20.6)	(53.5±14.8)	<0.001
<b>Onset age, years, n (%)</b>				<0.001 <sup>a</sup>
<18	62 (10.8)	59 (13.8)	3 (2.1)	
18-49	236 (41.3)	183 (42.8)	53 (36.8)	
≥50	274 (47.9)	186 (43.5)	88 (61.1)	
<b>Onset symptoms, n (%)</b>				0.03
Ptosis	358 (62.6)	279 (65.2)	79 (54.9)	
Diplopia/Diplopia and ptosis	214 (37.4)	149 (34.8)	65 (45.1)	
<b>Comorbid autoimmune diseases, n (%)<sup>b</sup></b>				0.78 <sup>a</sup>
No	555 (97.0)	416 (97.2)	139 (96.5)	
Yes	17 (3.0)	12 (2.8)	5 (3.5)	
<b>RNS findings, n (%)</b>				<0.001
Normal	266 (46.5)	230 (53.7)	36 (25.0)	
Abnormal	306 (53.5)	198 (46.3)	108 (75.0)	
<b>AChR-Ab, n (%)</b>				<0.001 <sup>a</sup>
Seronegative	139 (24.3)	130 (30.4)	9 (6.2)	
Seropositive	433 (75.7)	298 (69.6)	135 (93.8)	
<b>Neostigmine test, n (%)</b>				0.19 <sup>a</sup>
Negative	20 (3.5)	18 (4.2)	2 (1.4)	
Positive	552 (96.5)	410 (95.8)	142 (98.6)	
<b>Thymic status, n (%)</b>				0.002
Non-thymoma	479 (83.7)	371 (86.7)	108 (75.0)	
Thymoma	93 (16.3)	57 (13.3)	36 (25.0)	
<b>Follow-up period, months, median (IQR)</b>	14.5 (7.0, 47.3)	24.0 (8.0, 57.0)	12.0 (6.0, 24.0)	<0.001 <sup>c</sup>

SD, standard deviation; IQR, interquartile range; RNS, repetitive nerve stimulation; AChR-Ab, acetylcholine receptor antibody; OMG, ocular myasthenia gravis; OMG-M, OMG maintenance; OMG-G, OMG generalized.

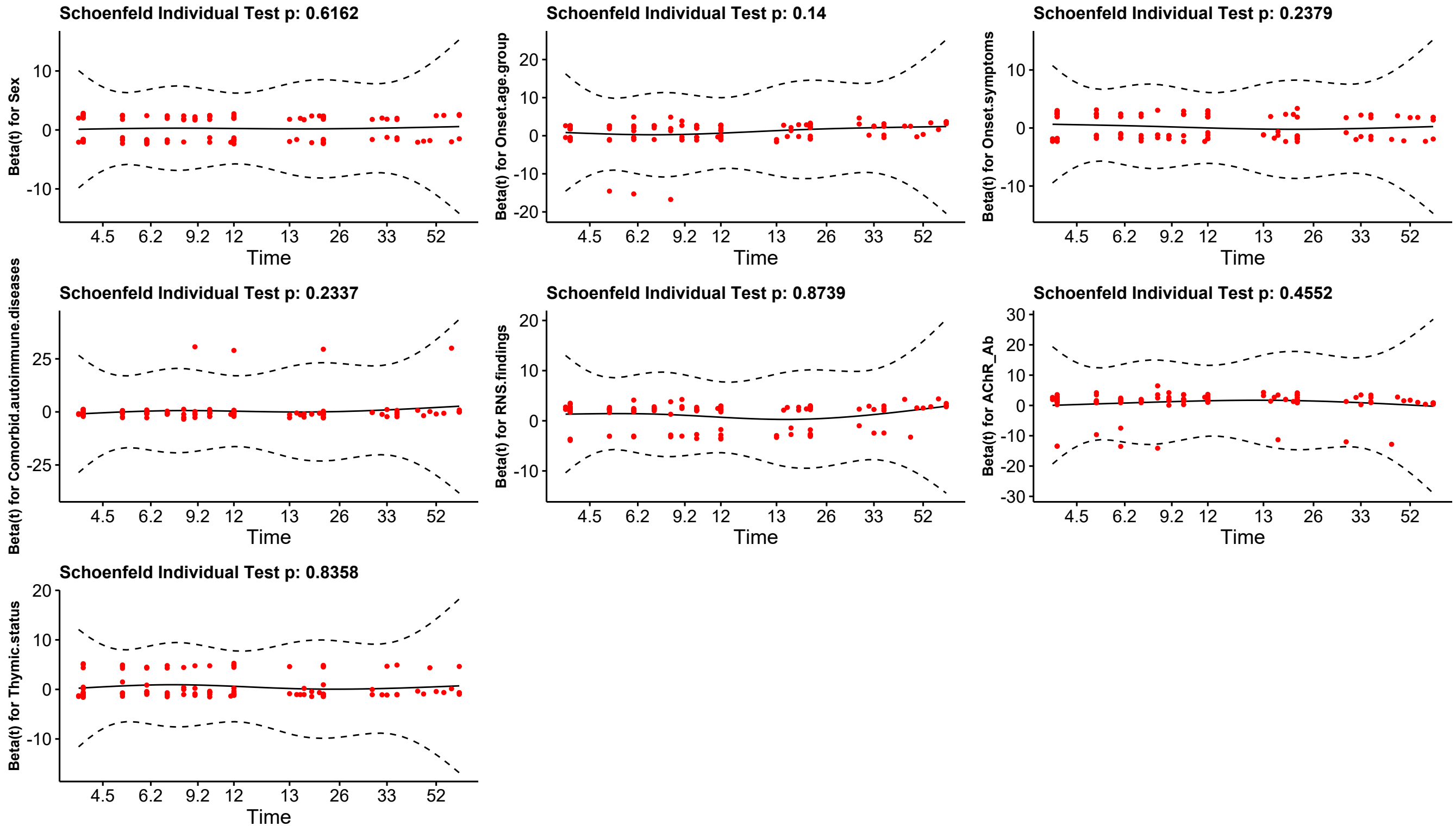
<sup>a</sup> Fisher's exact test.

<sup>b</sup> Comorbid autoimmune diseases included systemic lupus erythematosus, multiple sclerosis, rheumatoid arthritis, Hashimoto's thyroiditis, and optic neuromyelitis spectrum disease.

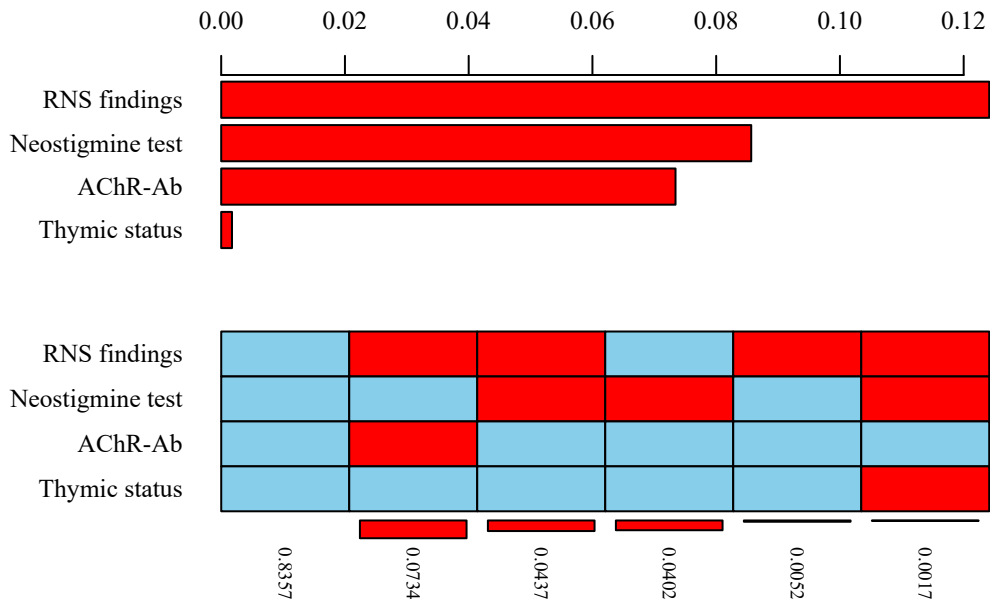
<sup>c</sup> Mann-Whitney U test.

**Fig S1. The relationship between Schoenfeld residual and time**

Global Schoenfeld Test p: 0.4804



**Fig S2. Histogram of missing value patterns**



**Fig. S1 The relationship between Schoenfeld residual and time**

Each small graph represents the correlation of the standardized Schoenfeld residuals of the corresponding covariate with respect to time.

**Fig. S2 Histogram of missing value patterns**

The red grid represents missing data, the blue grid represents complete data, and the horizontal axis is the proportion of missing variables.