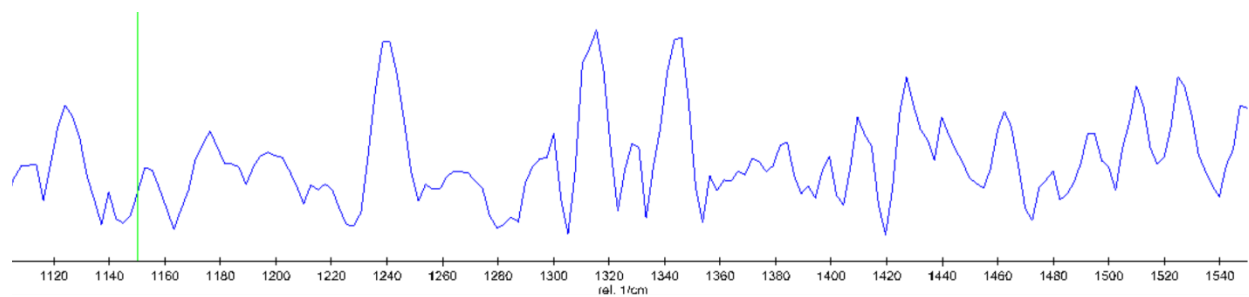


## Supporting Information #1



### Figure Legend

**Supplemental Figure 1.** A confocal Raman spectra of a CML standard of 750 ng/mL of H<sub>2</sub>O. The vertical green line at the reported center of the CML peak. While the peak is within the expected range for CML, the slight rightward shift compared to those reported in literature (over the same range<sup>23</sup>) may be caused to the difference in the spectral centers and the impact of H<sub>2</sub>O in our standard spectra.