

Figure 1B – XL413 cleaved PARP

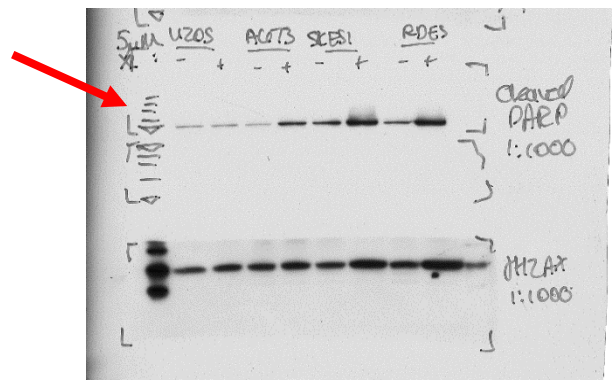


Figure 1B – XL413 GAPDH

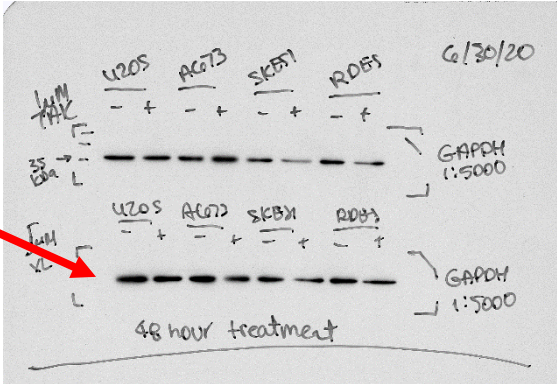


Figure 1B – TAK-931 cleaved PARP and GAPDH

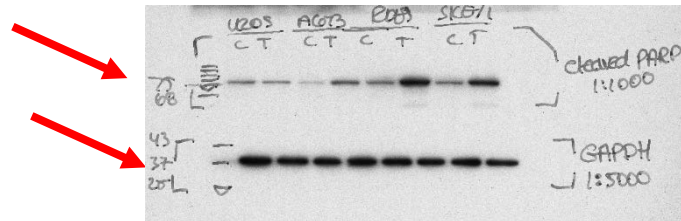


Figure 2A&B – phospho- CHK1 S345

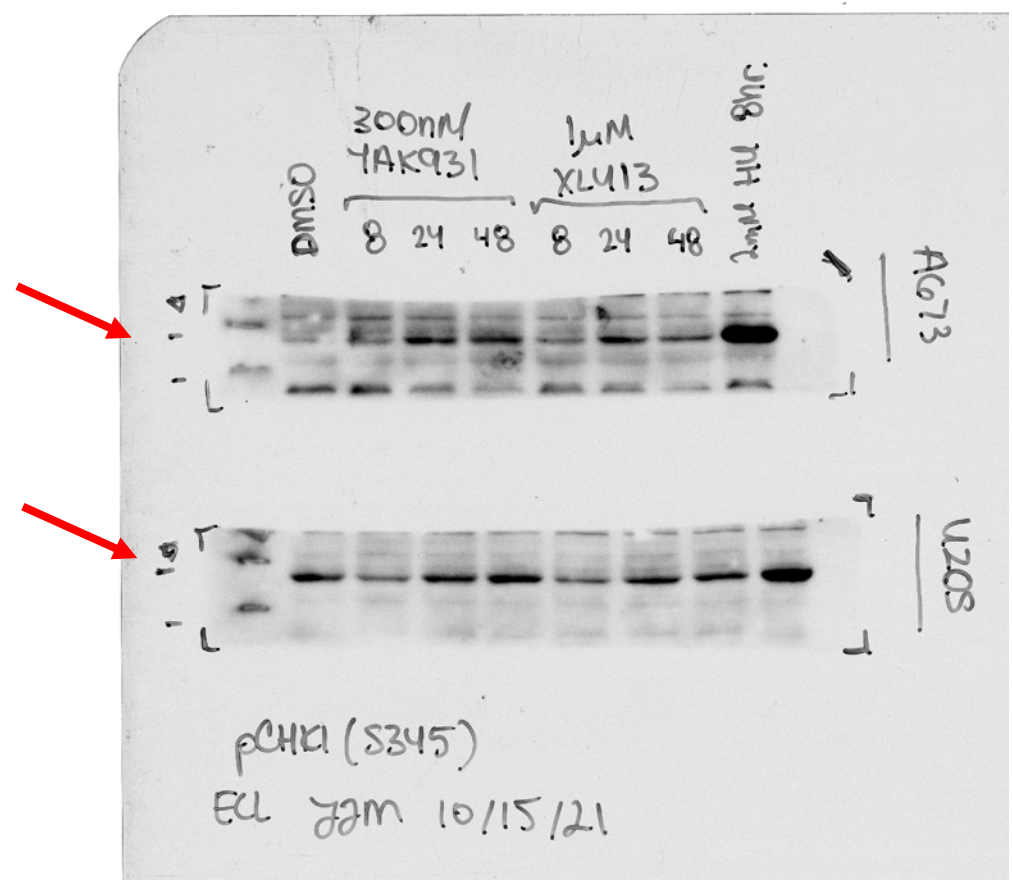


Figure 2B – total CHK1

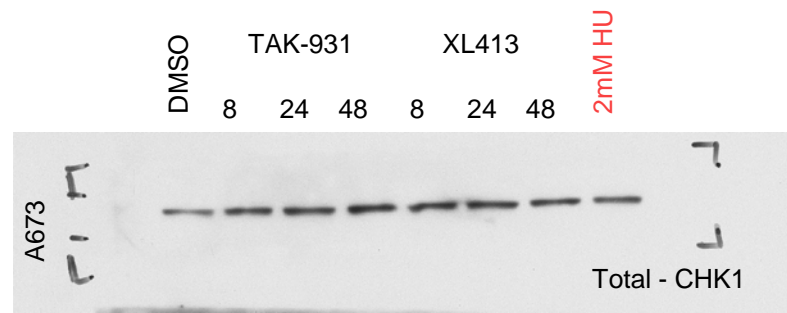


Figure 2B – vinculin

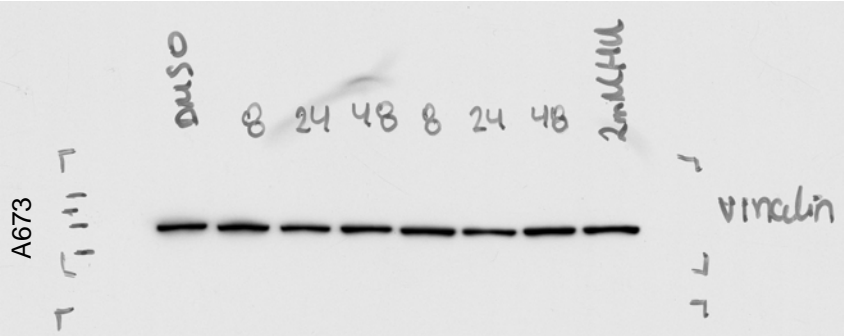


Figure 2B – total CHK1 and vinculin

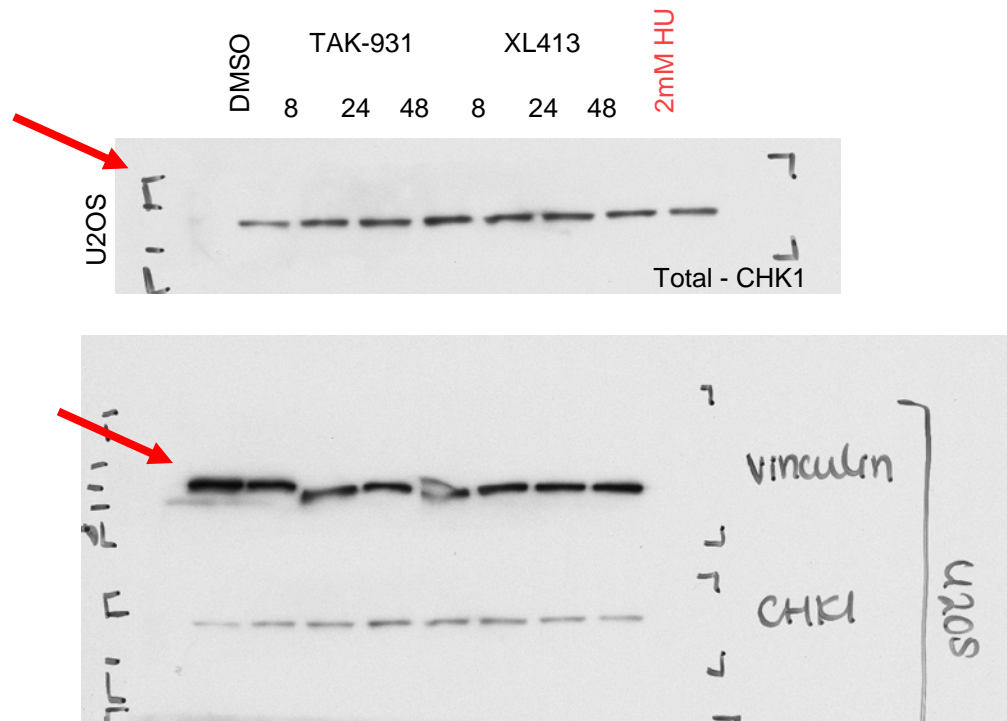


Figure 3B – pHH3 DMSO (left) TAK931 (right)

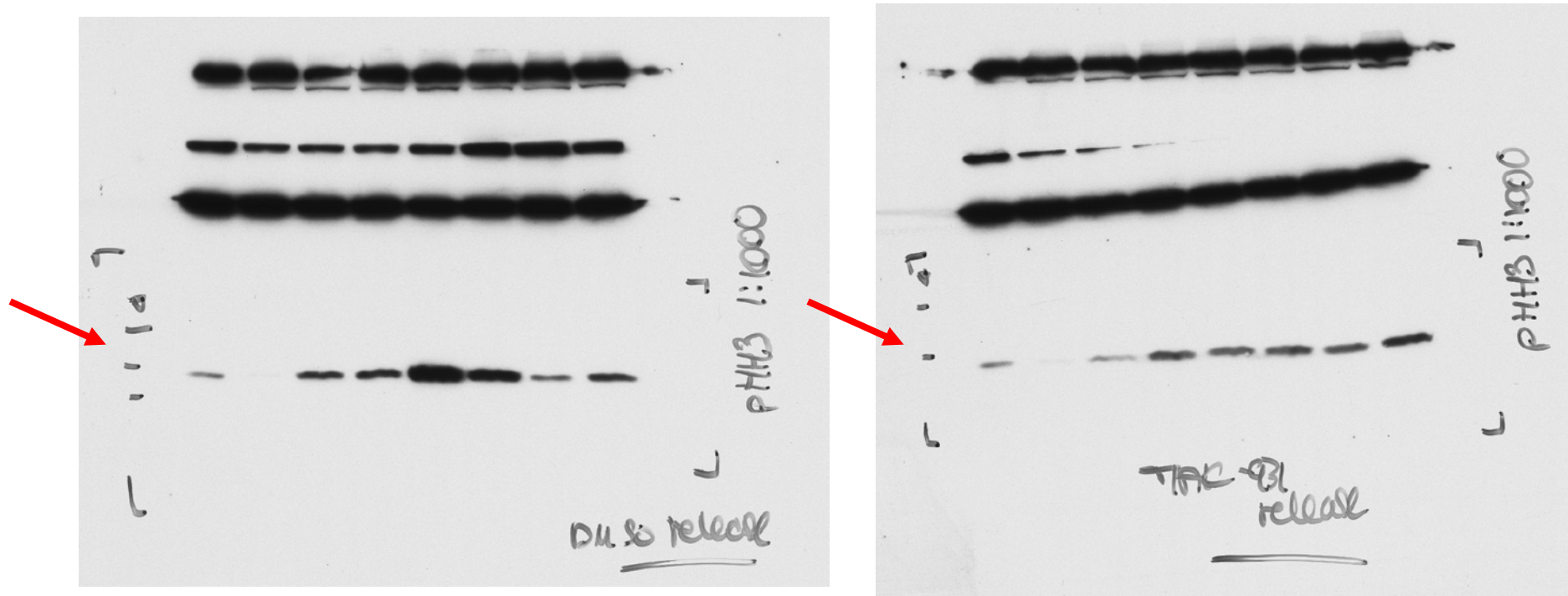




Figure 3B – CDT1 - DMSO (left) TAK931 (right)

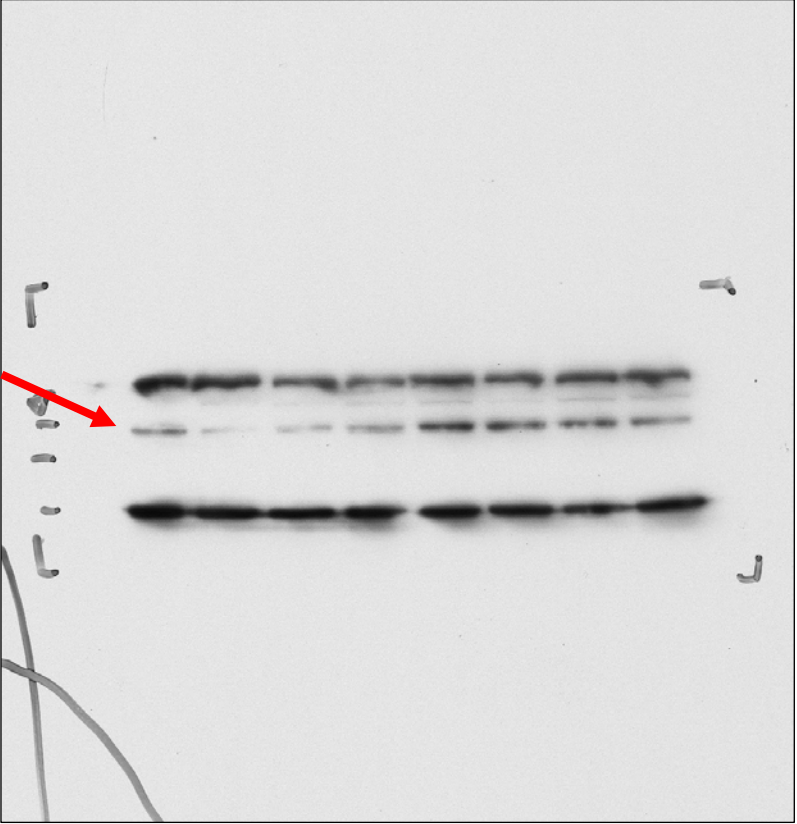
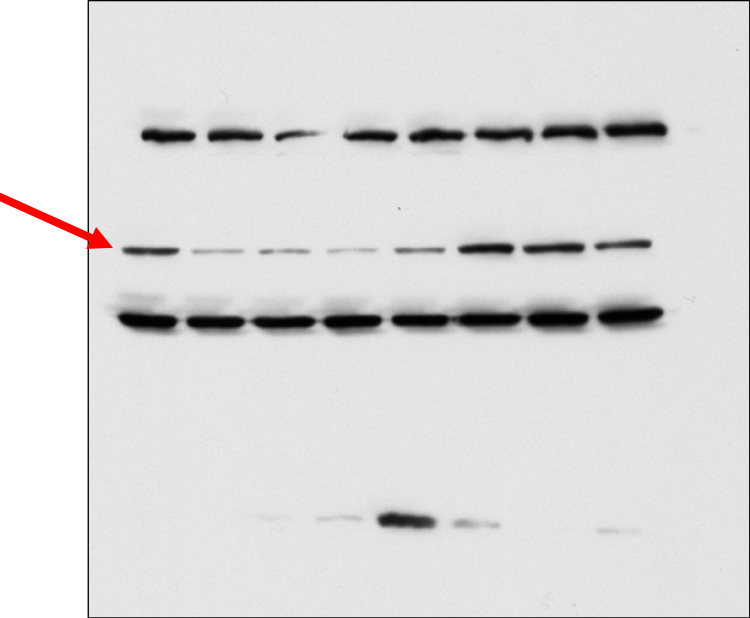


Figure 3B pCDC2, CyclinA and PARP1

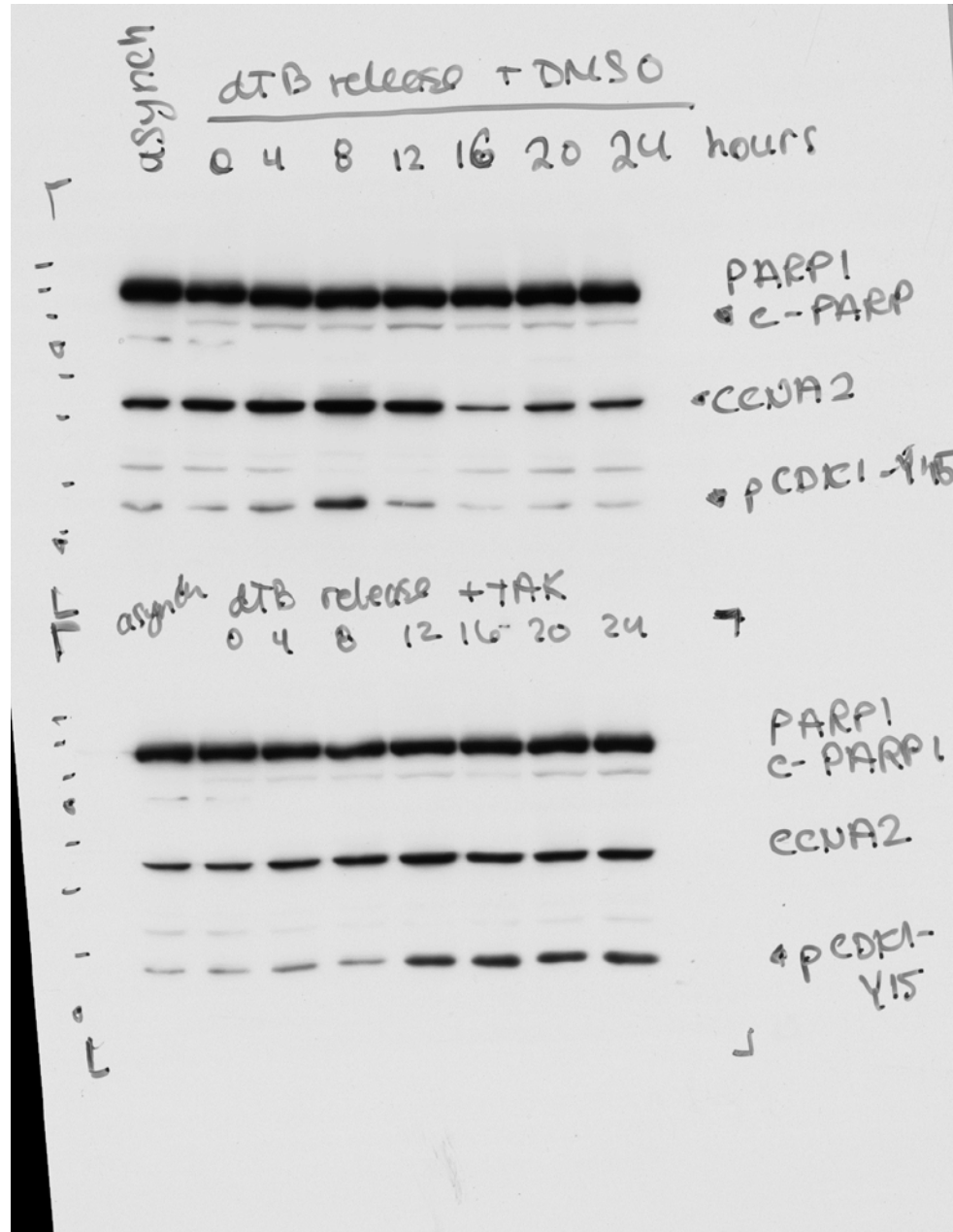


Figure 3B

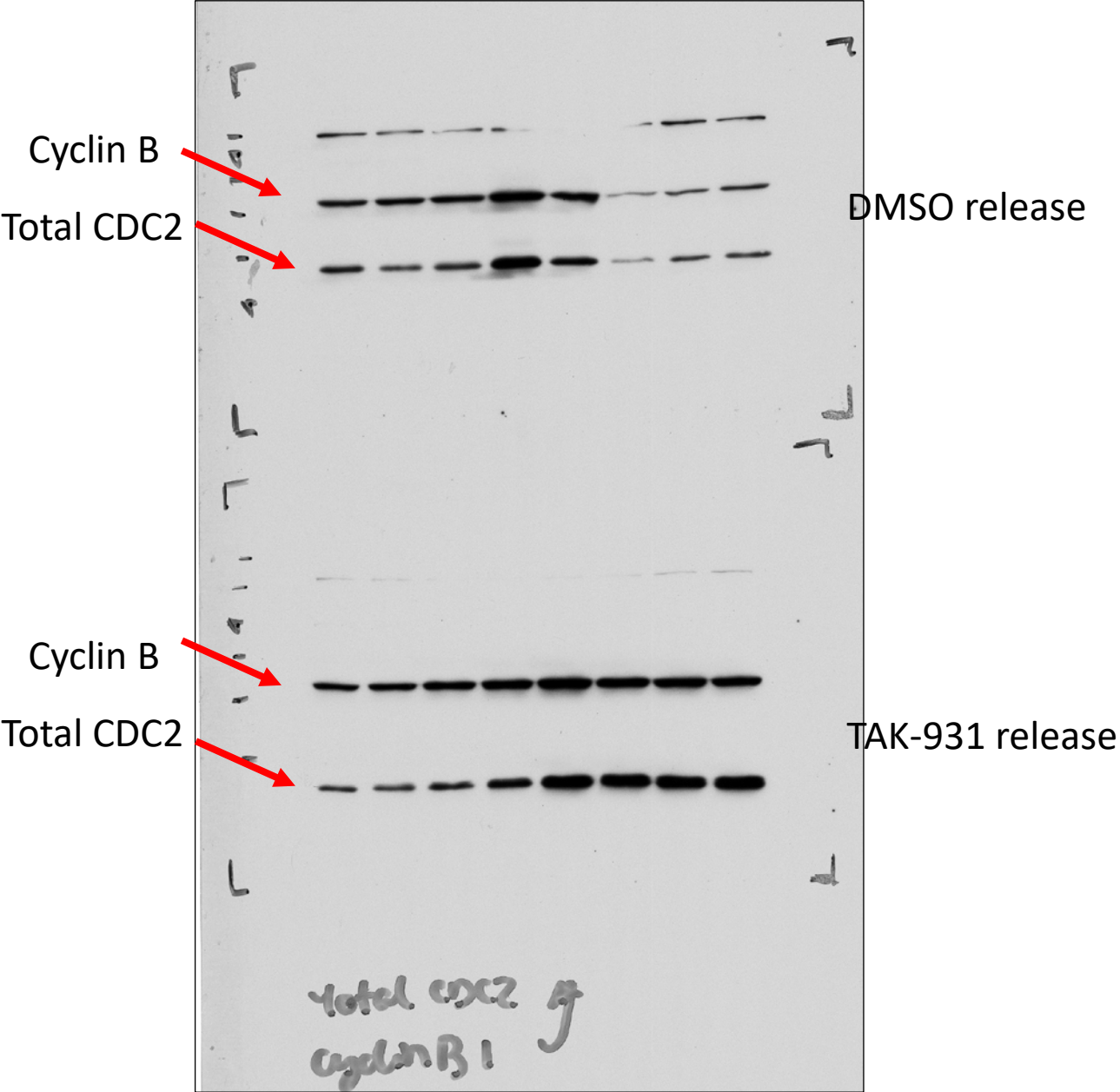


Figure 3B - GAPDH

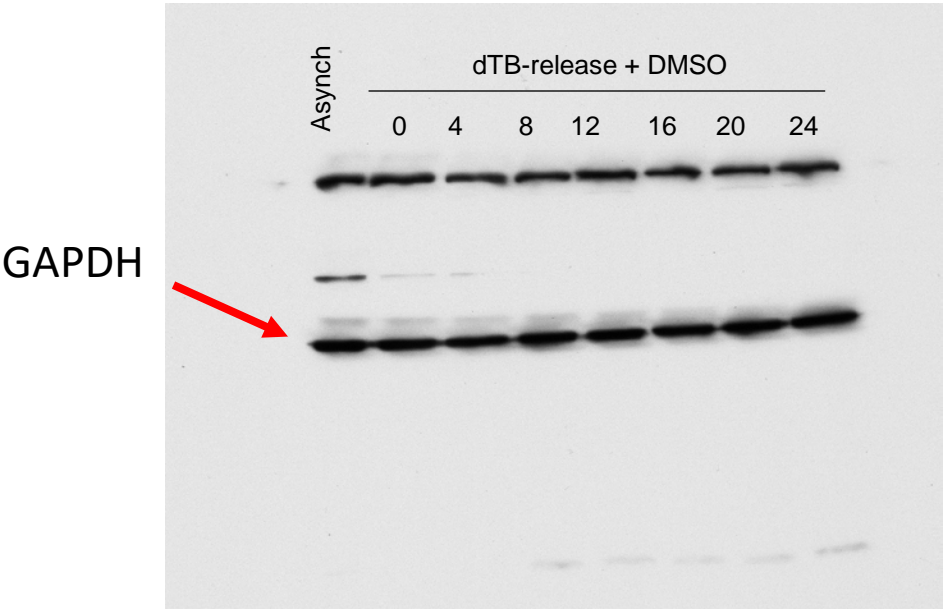
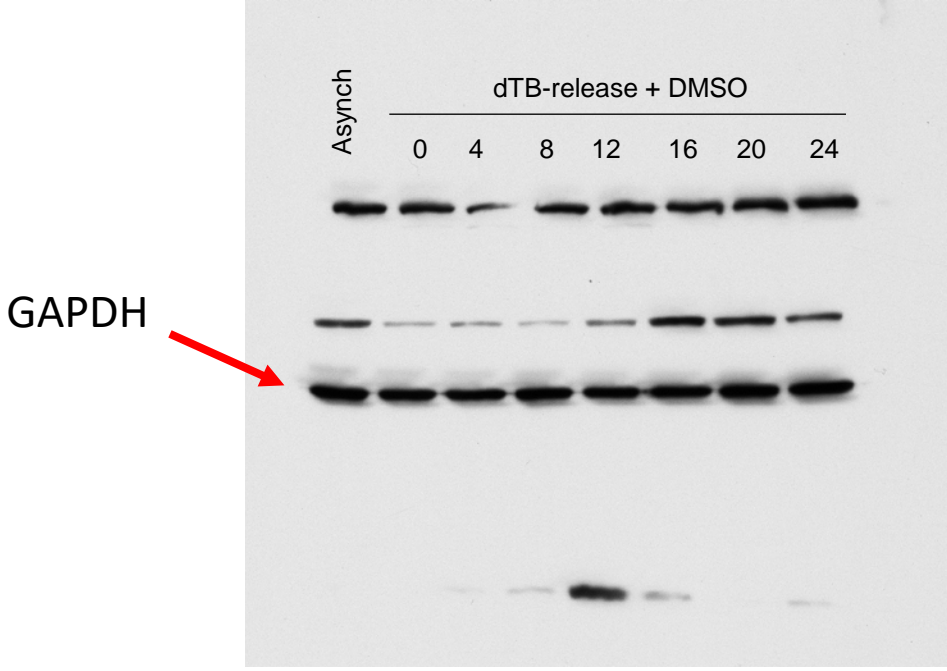


Figure 3C – p-CDC2

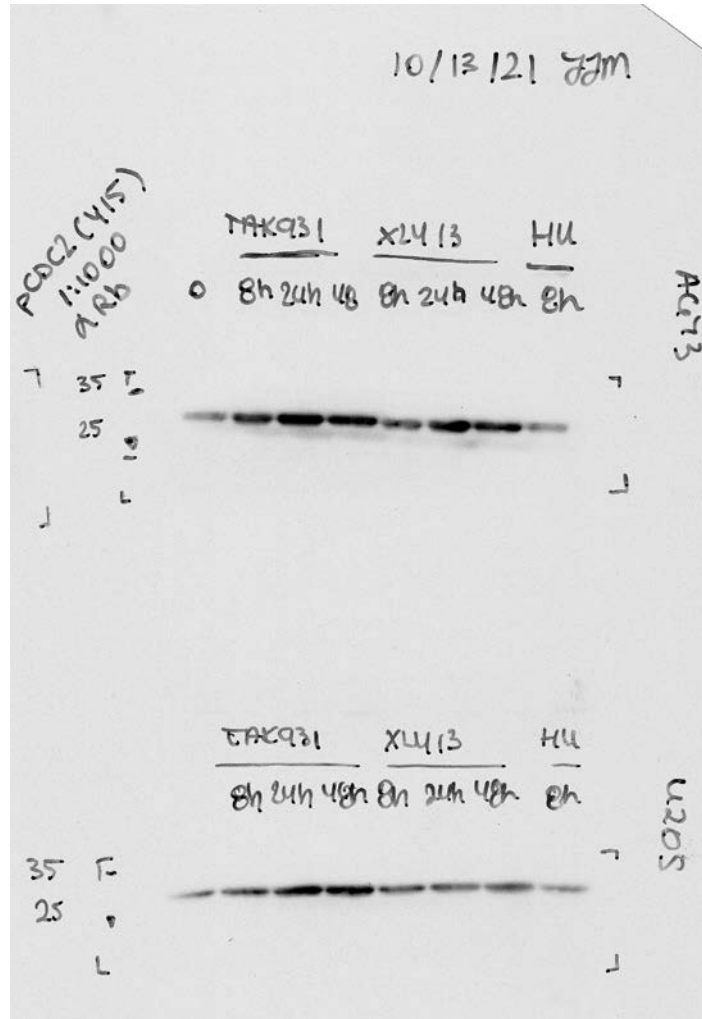


Figure 3C – total CDC2 and vinculin

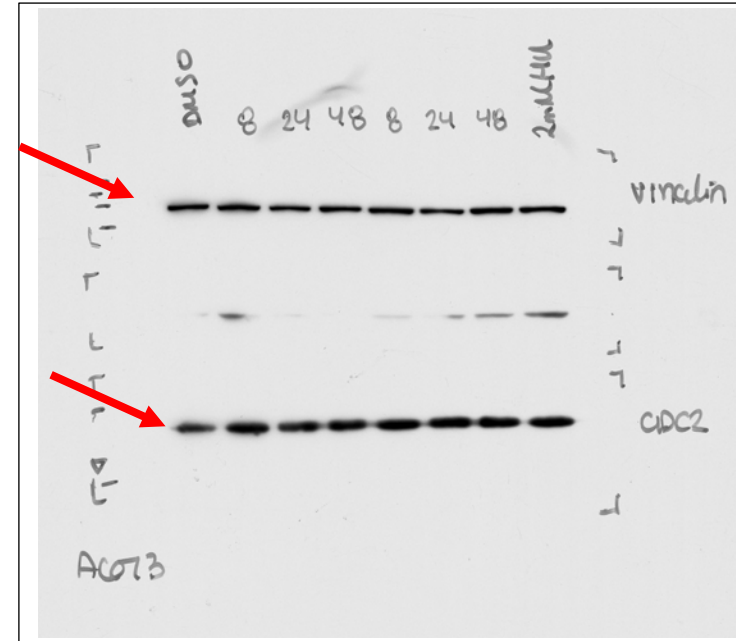
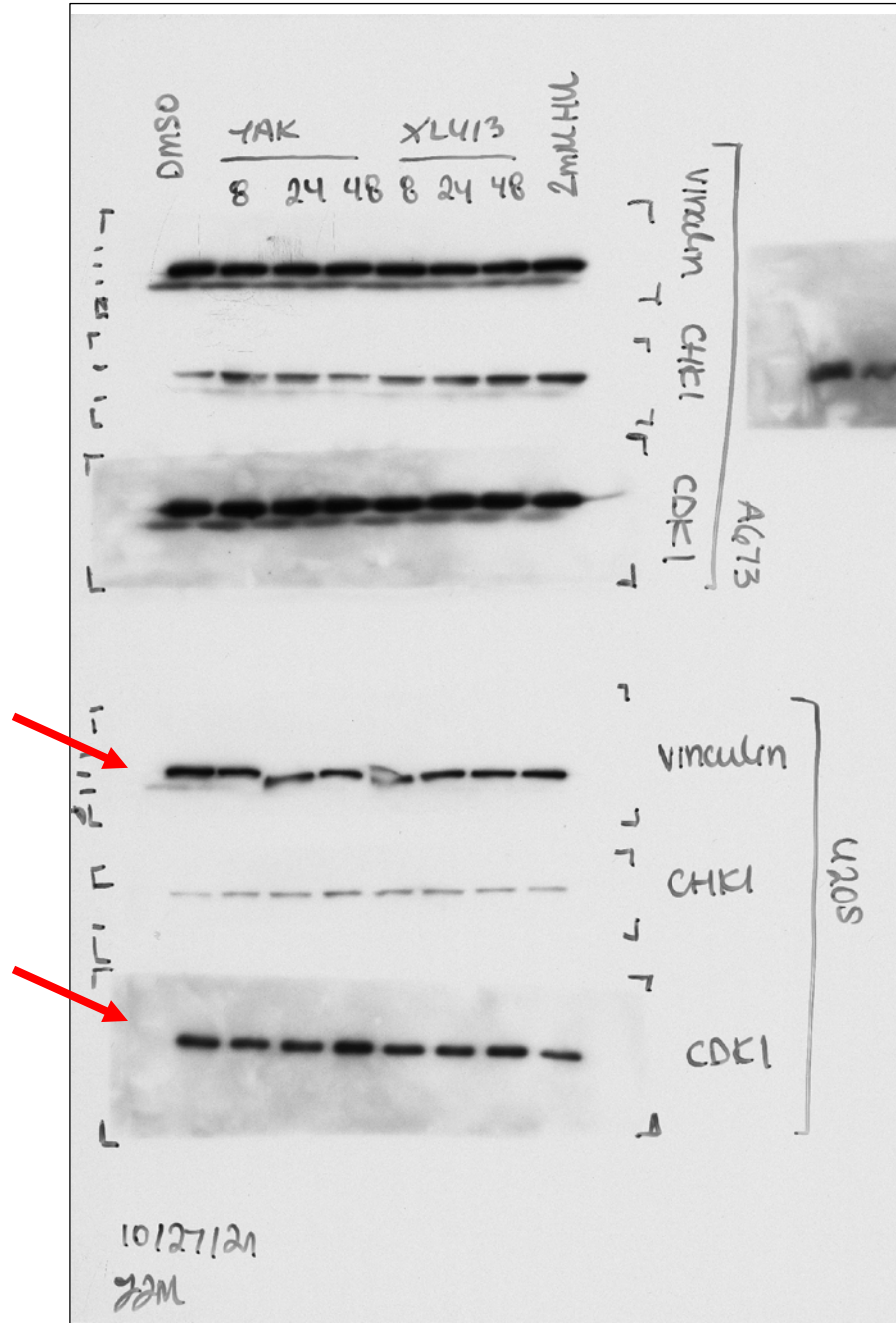


Figure 3D – PARP1 and CDT1

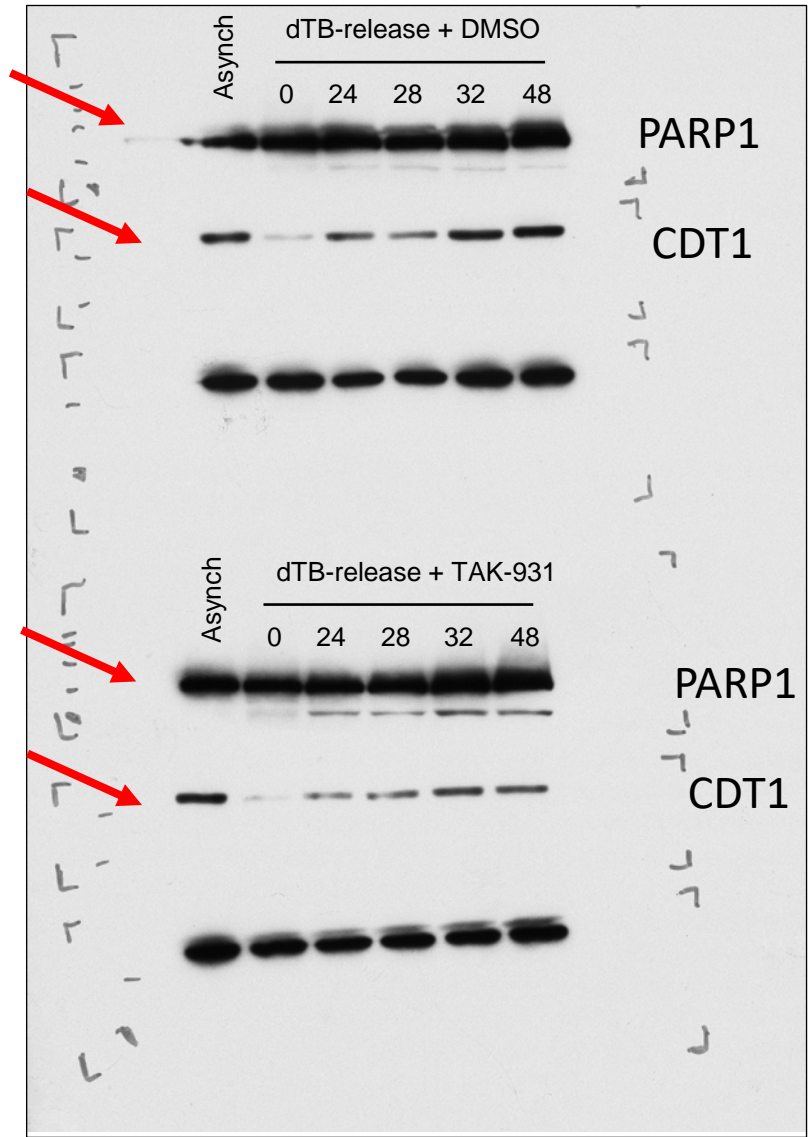


Figure 3D – pHH3

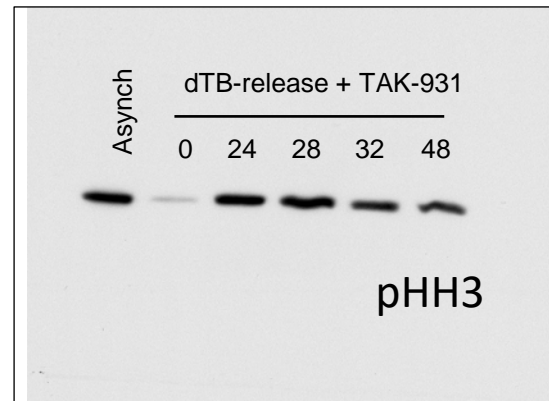
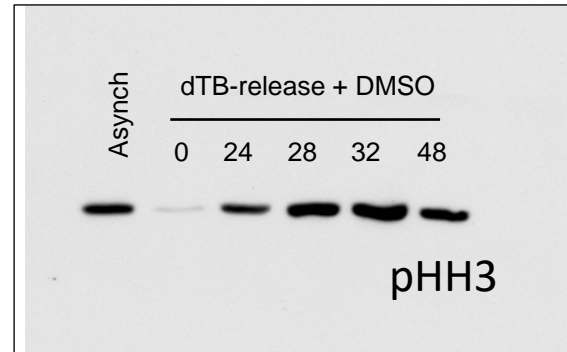
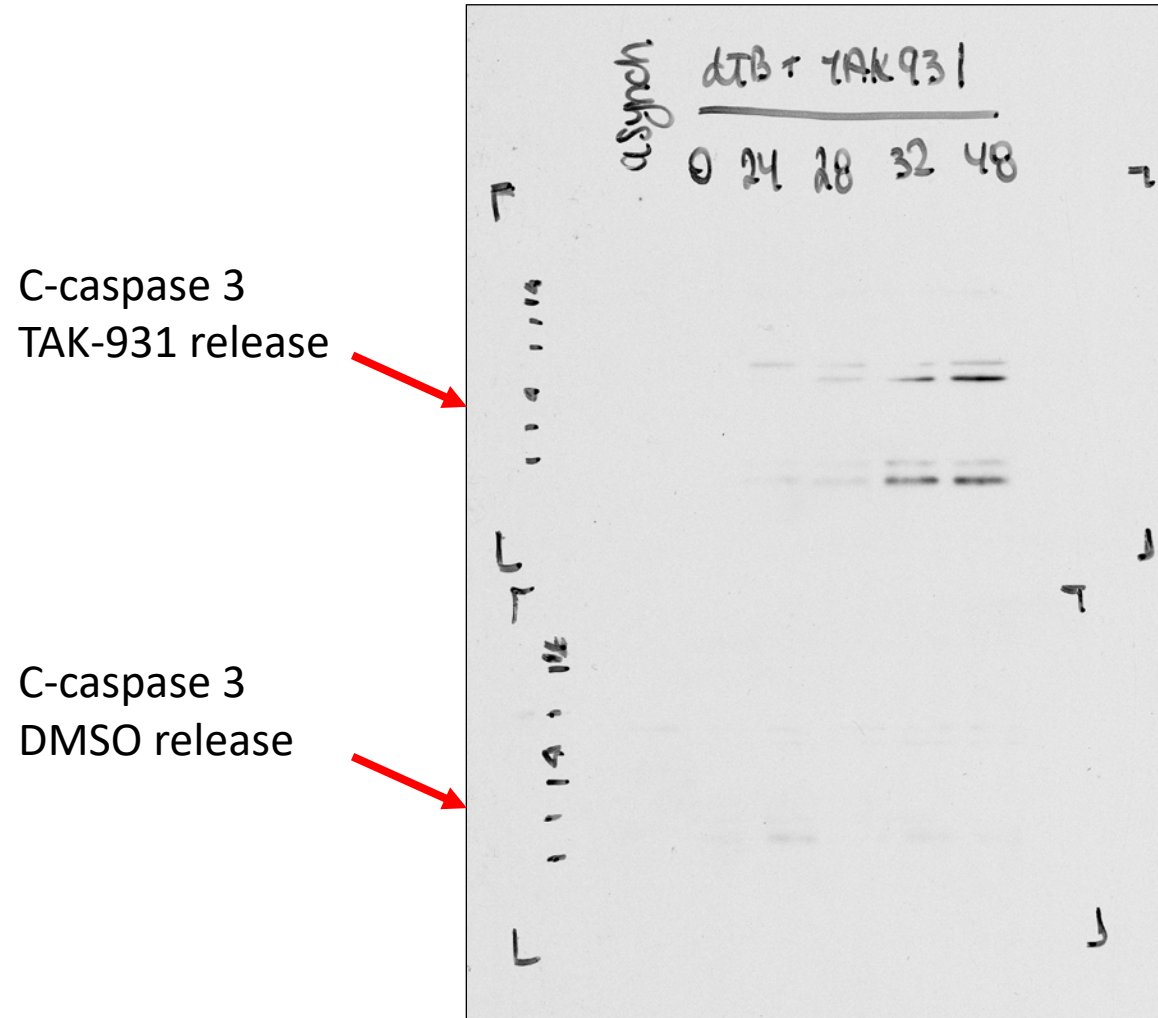
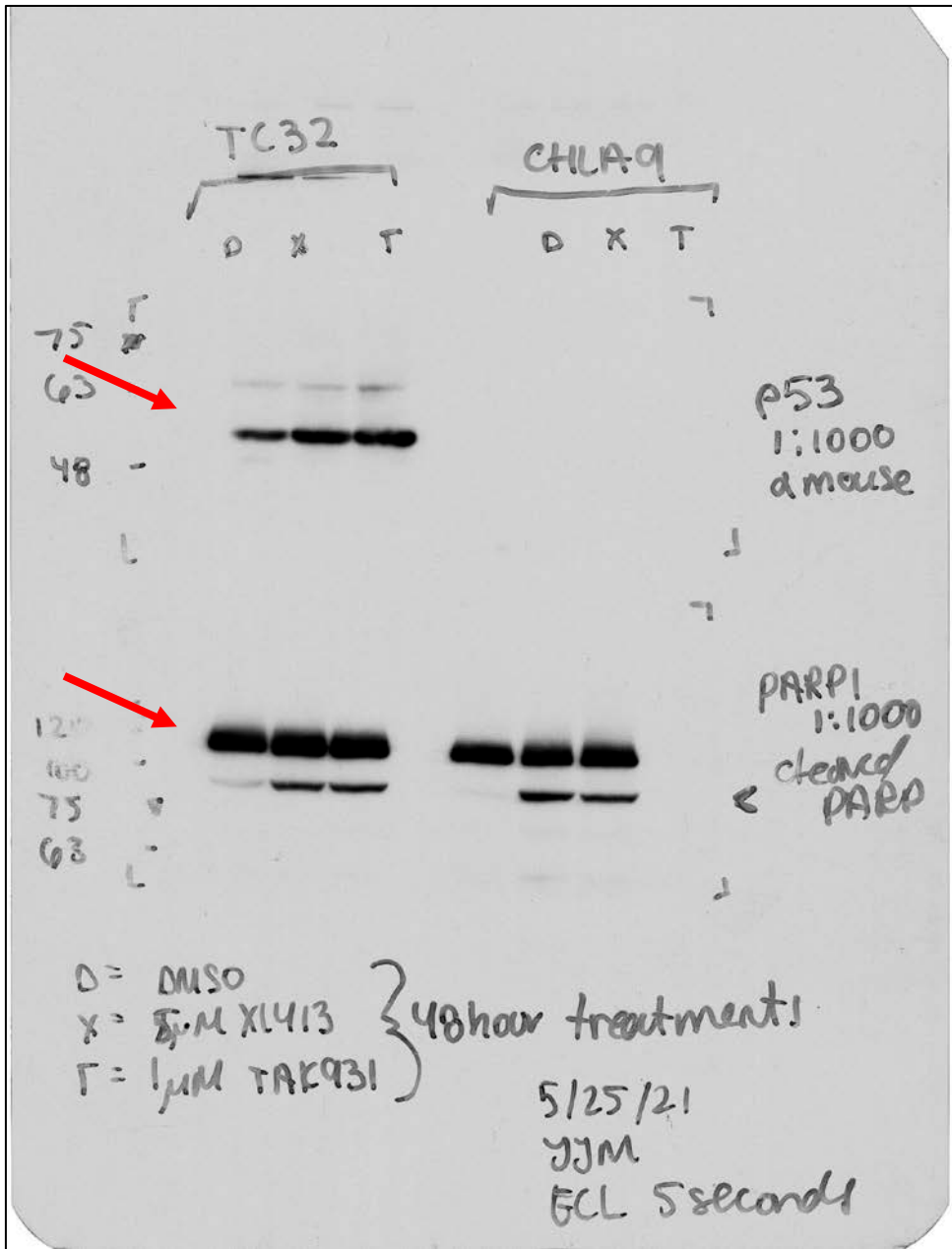




Figure 3D – cleaved caspase 3







Supplemental figure 4

