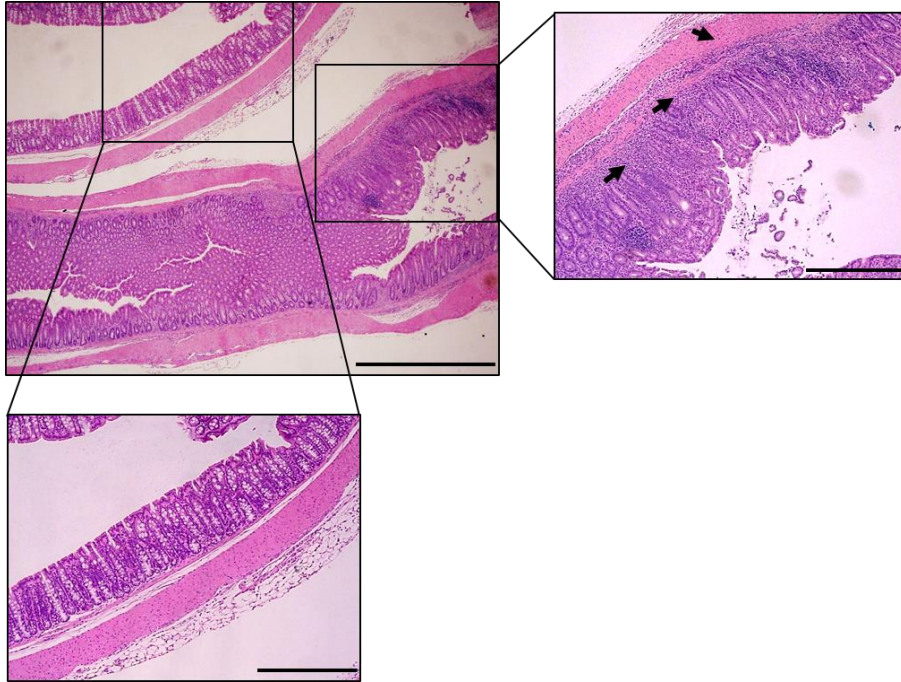
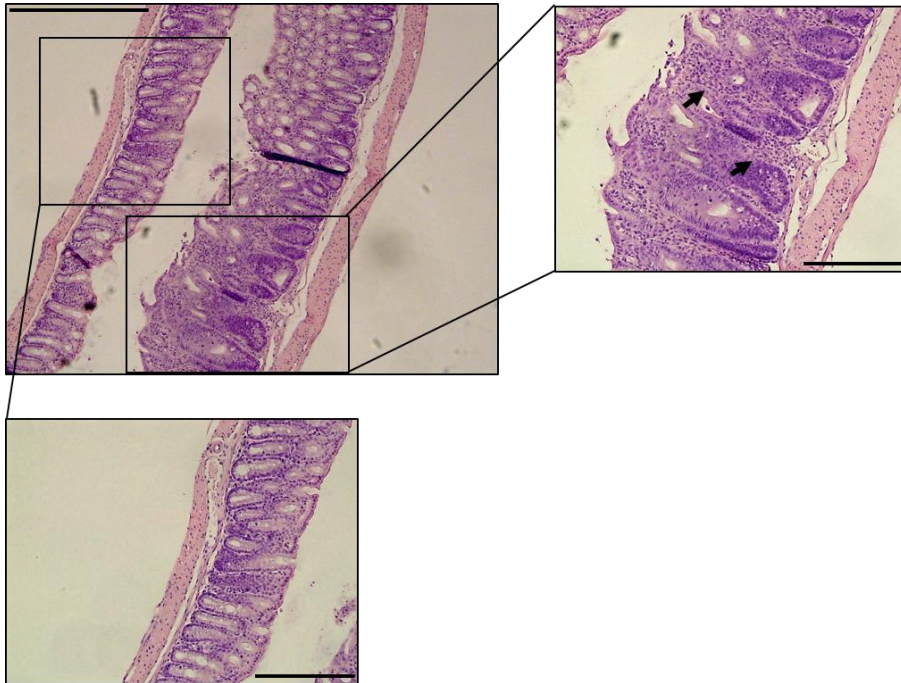


**A**



**B**



**Fig. S1. Skip lesions in older Tac-fostered *Nod2*<sup>-/-</sup>*Cybb*<sup>-/-</sup> mice.** (A and B) Representative histology of H&E-stained colonic sections from 12-week-old Tac-DKO mice. High-powered images of marked area are shown in inset. Right insets show inflamed colonic areas and lower insets show uninfamed intestinal areas in Tac-DKO mice. Scale bar, 500 μm. Arrows show inflammatory cell infiltrate. Two representative mice (A and B) are shown.