

Supplemental figure 1: Original data for the statistical analysis of the MBP absorbance in the corpus callosum at the end of 2nd week after CCH (for figure 1B).

| 2w original data | CCH | CCH+ SCH58261 | CCH+ CGS21680 | CCH+ CGS21680 (KO) |
|------------------|-----|---------------|---------------|--------------------|
| corpus callosum | 54 | 43 | 66 | 46 |
| | 59 | 42 | 64 | 43 |
| | 62 | 48 | 62 | 38 |
| | 55 | 41 | 71 | 52 |
| | 48 | 47 | 64 | 53 |
| | 52 | 38 | 69 | 38 |

| | CCH | CCH+ SCH58261 | CCH+ CGS21680 | CCH+ CGS21680 (KO) | | |
|--|------------------|------------------|------------------|--------------------|---------------|---------|
| Mean \pm SD | 55.00 \pm 4.98 | 43.17 \pm 3.76 | 66.00 \pm 3.41 | 45.00 \pm 6.57 | | |
| Normality: Shapiro-Wilk normality test (W) P | (0.99) 0.98 | (0.95) 0.74 | (0.94) 0.63 | (0.89) 0.30 | | |
| Homogeneity of Variances: Levene Statistic | | | | | F(3,20)=1.404 | p=0.271 |
| One way ANOVA | | | | | F=28.299 | p=0.000 |

| Multiple Comparisons | CCH vs. CCH+ SCH58261 | CCH vs. CCH+ CGS21680 | CCH vs. CCH+ CGS21680(KO) |
|----------------------|---------------------------------|--------------------------------------|--------------------------------------|
| Tukey HSD | p=0.002 | p=0.004 | p=0.009 |
| LSD | p=0.000 | p=0.001 | p=0.002 |
| | CCH+ SCH58261 vs. CCH+ CGS21680 | CCH+ SCH58261 vs. CCH+ CGS21680 (KO) | CCH+ CGS21680 vs. CCH+ CGS21680 (KO) |
| Tukey HSD | p=0.000 | p=0.912 | p=0.000 |
| LSD | p=0.000 | p=0.519 | p=0.000 |

Supplemental figure 2: Original data for the statistical analysis of the MBP absorbance in the corpus callosum at the end of 4th week after CCH (for figure 1B).

| 4w original data | CCH | CCH+ SCH58261 | CCH+ CGS21680 | CCH+ CGS21680 (KO) |
|------------------|-----|---------------|---------------|--------------------|
| corpus callosum | 42 | 25 | 47 | 32 |
| | 37 | 32 | 57 | 24 |
| | 39 | 24 | 47 | 24 |
| | 43 | 28 | 45 | 27 |
| | 35 | 24 | 57 | 29 |
| | 36 | 31 | 52 | 29 |

| | CCH | CCH+ SCH58261 | CCH+ CGS21680 | CCH+ CGS21680 (KO) | | |
|--|------------------|------------------|------------------|--------------------|---------------|---------|
| Mean \pm SD | 38.67 \pm 3.27 | 27.33 \pm 3.56 | 50.83 \pm 5.31 | 27.50 \pm 3.15 | | |
| Normality: Shapiro-Wilk normality test (W) P | (0.92) 0.51 | (0.86) 0.18 | (0.85) 0.17 | (0.91) 0.46 | | |
| Homogeneity of Variances: Levene Statistic | | | | | F(3,20)=1.948 | p=0.154 |
| One way ANOVA | | | | | F=48.791 | p=0.000 |

| Multiple Comparisons | CCH vs. CCH+ SCH58261 | CCH vs. CCH+ CGS21680 | CCH vs. CCH+ CGS21680(KO) |
|----------------------|-----------------------|-----------------------|---------------------------|
| Tukey HSD | p=0.000 | p=0.000 | p=0.000 |
| LSD | p=0.000 | p=0.000 | p=0.000 |

| | | | |
|-----------|---------------------------------|--------------------------------------|--------------------------------------|
| | CCH+ SCH58261 vs. CCH+ CGS21680 | CCH+ SCH58261 vs. CCH+ CGS21680 (KO) | CCH+ CGS21680 vs. CCH+ CGS21680 (KO) |
| Tukey HSD | p=0.000 | p=1.000 | p=0.000 |
| LSD | p=0.000 | p=0.942 | p=0.000 |

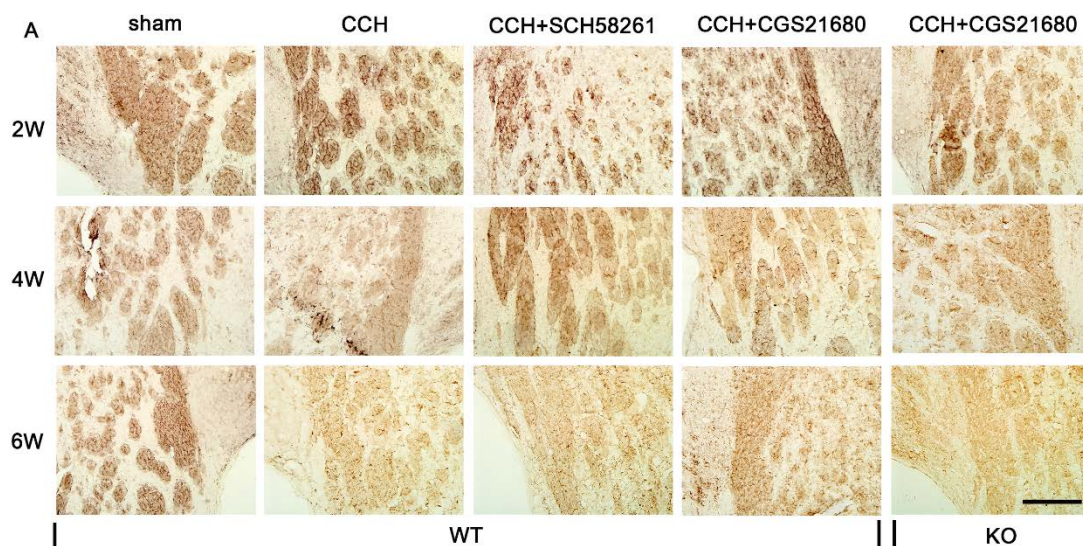
Supplemental figure 3: Original data for the statistical analysis of the MBP absorbance in the corpus callosum at the end of 6th week after CCH (for figure 1B).

| | | | | |
|------------------|-----|---------------|---------------|--------------------|
| 6w original data | CCH | CCH+ SCH58261 | CCH+ CGS21680 | CCH+ CGS21680 (KO) |
| corpus callosum | 21 | 16 | 33 | 9 |
| | 26 | 10 | 30 | 13 |
| | 24 | 12 | 32 | 12 |
| | 21 | 14 | 35 | 7 |
| | 27 | 12 | 27 | 12 |
| | 16 | 7 | 27 | 11 |

| | | | | | | |
|--|------------------|------------------|------------------|--------------------|---------------|---------|
| | CCH | CCH+ SCH58261 | CCH+ CGS21680 | CCH+ CGS21680 (KO) | | |
| Mean \pm SD | 22.50 \pm 4.04 | 11.83 \pm 3.13 | 30.67 \pm 3.27 | 10.67 \pm 2.25 | | |
| Normality: Shapiro-Wilk normality test (W) P | (0.94) 0.64 | (0.98) 0.94 | (0.92) 0.51 | (0.91) 0.41 | | |
| Homogeneity of Variances: Levene Statistic | | | | | F(3,20)=0.739 | p=0.541 |
| One way ANOVA | | | | | F=51.510 | p=0.000 |

| | | | |
|----------------------|---------------------------------|--------------------------------------|--------------------------------------|
| Multiple Comparisons | CCH vs. CCH+ SCH58261 | CCH vs. CCH+ CGS21680 | CCH vs. CCH+ CGS21680(KO) |
| Tukey HSD | p=0.000 | p=0.002 | p=0.000 |
| LSD | p=0.000 | p=0.000 | p=0.000 |
| | CCH+ SCH58261 vs. CCH+ CGS21680 | CCH+ SCH58261 vs. CCH+ CGS21680 (KO) | CCH+ CGS21680 vs. CCH+ CGS21680 (KO) |
| Tukey HSD | p=0.000 | p=0.923 | p=0.000 |
| LSD | p=0.000 | p=0.539 | p=0.000 |

Supplemental figure 4: Detection of white matter injury in the internal capsule using immunohistochemical staining for MBP after CCH. Scale bars = 50 μ m.



Supplemental figure 5: Original data for the statistical analysis of the MBP absorbance in the internal capsule at the end of 2nd week after CCH (for figure 1C).

| 2w original data | CCH | CCH+ SCH58261 | CCH+ CGS21680 | CCH+ CGS21680 (KO) |
|------------------|-----|---------------|---------------|--------------------|
| internal capsule | 69 | 52 | 81 | 49 |
| | 73 | 45 | 79 | 47 |
| | 69 | 47 | 82 | 56 |
| | 68 | 56 | 84 | 51 |
| | 64 | 54 | 76 | 52 |
| | 76 | 62 | 76 | 46 |

| | CCH | CCH+ SCH58261 | CCH+ CGS21680 | CCH+ CGS21680 (KO) | | |
|--|--------------|---------------|---------------|--------------------|---------------|---------|
| Mean ± SD | 69.84 ± 4.17 | 52.67 ± 6.19 | 79.67 ± 3.27 | 50.17 ± 3.66 | | |
| Normality: Shapiro-Wilk normality test (W) P | (0.96) 0.80 | (0.97) 0.90 | (0.92) 0.51 | (0.96) 0.82 | | |
| Homogeneity of Variances: Levene Statistic | | | | | F(3,20)=0.849 | p=0.483 |
| One way ANOVA | | | | | F=59.841 | p=0.000 |

| Multiple Comparisons | CCH vs. CCH+ SCH58261 | CCH vs. CCH+ CGS21680 | CCH vs. CCH+ CGS21680(KO) |
|----------------------|---------------------------------|--------------------------------------|--------------------------------------|
| Tukey HSD | p=0.000 | p=0.005 | p=0.000 |
| LSD | p=0.000 | p=0.001 | p=0.000 |
| | CCH+ SCH58261 vs. CCH+ CGS21680 | CCH+ SCH58261 vs. CCH+ CGS21680 (KO) | CCH+ CGS21680 vs. CCH+ CGS21680 (KO) |
| Tukey HSD | p=0.000 | p=0.768 | p=0.000 |
| LSD | p=0.000 | p=0.344 | p=0.000 |

Supplemental figure 6: Original data for the statistical analysis of the MBP absorbance in the internal capsule at the end of 4th week after CCH (for figure 1C).

| 4w original data | CCH | CCH+ SCH58261 | CCH+ CGS21680 | CCH+ CGS21680 (KO) |
|------------------|-----|---------------|---------------|--------------------|
| internal capsule | 54 | 36 | 68 | 37 |
| | 52 | 37 | 67 | 45 |
| | 52 | 41 | 69 | 44 |
| | 47 | 44 | 70 | 42 |
| | 48 | 42 | 68 | 41 |
| | 52 | 38 | 58 | 36 |

| | CCH | CCH+ SCH58261 | CCH+ CGS21680 | CCH+ CGS21680 (KO) | | |
|--|--------------|---------------|---------------|--------------------|---------------|---------|
| Mean ± SD | 50.83 ± 2.71 | 39.67 ± 3.14 | 66.67 ± 4.37 | 40.83 ± 3.66 | | |
| Normality: Shapiro-Wilk normality test (W) P | (0.86) 0.18 | (0.94) 0.66 | (0.72) 0.33 | (0.92) 0.50 | | |
| Homogeneity of Variances: Levene Statistic | | | | | F(3,20)=0.156 | p=0.924 |
| One way ANOVA | | | | | F=75.427 | p=0.000 |

| Multiple Comparisons | CCH vs. CCH+ SCH58261 | CCH vs. CCH+ CGS21680 | CCH vs. CCH+ CGS21680(KO) |
|----------------------|-----------------------|-----------------------|---------------------------|
| | | | |

| | | | |
|-----------|---------------------------------|--------------------------------------|--------------------------------------|
| Tukey HSD | p=0.000 | p=0.000 | p=0.000 |
| LSD | p=0.000 | p=0.000 | p=0.000 |
| | CCH+ SCH58261 vs. CCH+ CGS21680 | CCH+ SCH58261 vs. CCH+ CGS21680 (KO) | CCH+ CGS21680 vs. CCH+ CGS21680 (KO) |
| Tukey HSD | p=0.000 | p=0.939 | p=0.000 |
| LSD | p=0.000 | p=0.573 | p=0.000 |

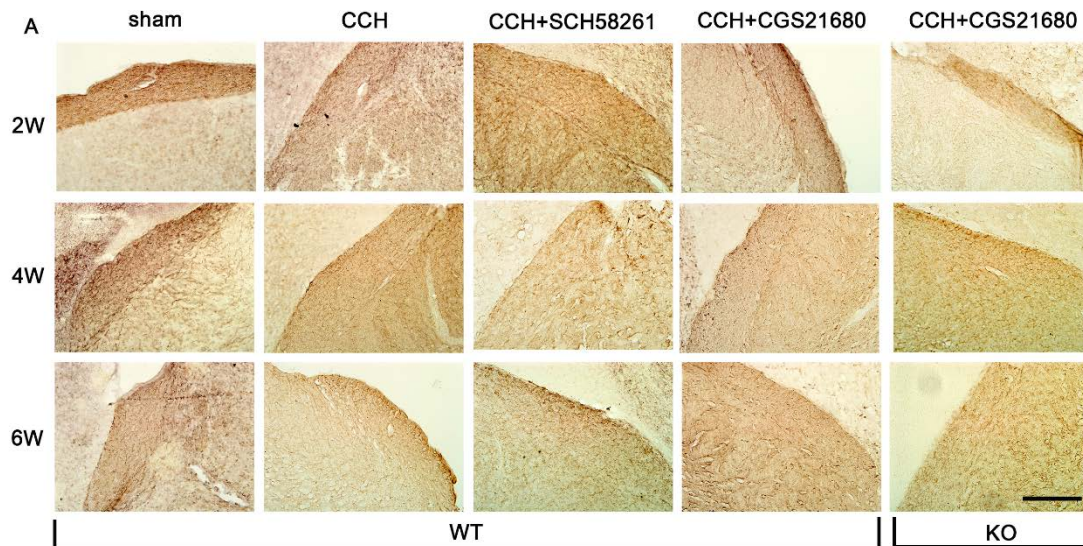
Supplemental figure 7: Original data for the statistical analysis of the MBP absorbance in the internal capsule at the end of 6th week after CCH (for figure 1C).

| 6w original data | CCH | CCH+ SCH58261 | CCH+ CGS21680 | CCH+ CGS21680 (KO) |
|------------------|-----|---------------|---------------|--------------------|
| internal capsule | 41 | 19 | 48 | 22 |
| | 31 | 24 | 58 | 19 |
| | 33 | 22 | 46 | 24 |
| | 39 | 23 | 51 | 24 |
| | 37 | 21 | 53 | 21 |
| | 41 | 23 | 46 | 23 |

| | CCH | CCH+ SCH58261 | CCH+ CGS21680 | CCH+ CGS21680 (KO) | | |
|--|--------------|---------------|---------------|--------------------|---------------|---------|
| Mean ± SD | 37.00 ± 4.20 | 22.00 ± 1.79 | 49.50 ± 3.27 | 22.17 ± 1.94 | | |
| Normality: Shapiro-Wilk normality test (W) P | (0.89) 0.32 | (0.93) 0.61 | (0.84) 0.15 | (0.91) 0.45 | | |
| Homogeneity of Variances: Levene Statistic | | | | | F(3,20)=3.125 | p=0.049 |
| One way ANOVA | | | | | F=119.357 | p=0.000 |

| Multiple Comparisons | CCH vs. CCH+ SCH58261 | CCH vs. CCH+ CGS21680 | CCH vs. CCH+ CGS21680(KO) |
|----------------------|---------------------------------|--------------------------------------|--------------------------------------|
| Tukey HSD | p=0.000 | p=0.000 | p=0.000 |
| LSD | p=0.000 | p=0.000 | p=0.000 |
| | CCH+ SCH58261 vs. CCH+ CGS21680 | CCH+ SCH58261 vs. CCH+ CGS21680 (KO) | CCH+ CGS21680 vs. CCH+ CGS21680 (KO) |
| Tukey HSD | p=0.000 | p=1.000 | p=0.000 |
| LSD | p=0.000 | p=0.924 | p=0.000 |

Supplemental figure 8: Detection of white matter injury in the optic tract using immunohistochemical staining for MBP after CCH. Scale bars = 50 µm.



Supplemental figure 9: Original data for the statistical analysis of the MBP absorbance in the optic tract at the end of 2nd week after CCH (for figure 1D).

| 2w original data | CCH | CCH+ SCH58261 | CCH+ CGS21680 | CCH+ CGS21680 (KO) |
|------------------|-----|---------------|---------------|--------------------|
| optic tract | 46 | 34 | 54 | 37 |
| | 39 | 33 | 62 | 34 |
| | 51 | 34 | 51 | 33 |
| | 45 | 36 | 59 | 32 |
| | 47 | 34 | 57 | 33 |
| | 42 | 37 | 55 | 36 |

| | CCH | CCH+ SCH58261 | CCH+ CGS21680 | CCH+ CGS21680 (KO) | | |
|--|------------------|------------------|------------------|--------------------|---------------|---------|
| Mean \pm SD | 45.00 \pm 4.15 | 34.67 \pm 1.51 | 56.33 \pm 3.88 | 34.17 \pm 1.94 | | |
| Normality: Shapiro-Wilk normality test (W) P | (0.99) 0.98 | (0.87) 0.21 | (0.99) 0.99 | (0.91) 0.45 | | |
| Homogeneity of Variances: Levene Statistic | | | | | F(3,20)=1.767 | p=0.186 |
| One way ANOVA | | | | | F=68.597 | p=0.000 |

| Multiple Comparisons | CCH vs. CCH+ SCH58261 | CCH vs. CCH+ CGS21680 | CCH vs. CCH+ CGS21680(KO) |
|----------------------|---------------------------------|--------------------------------------|--------------------------------------|
| Tukey HSD | p=0.000 | p=0.000 | p=0.000 |
| LSD | p=0.000 | p=0.000 | p=0.000 |
| | CCH+ SCH58261 vs. CCH+ CGS21680 | CCH+ SCH58261 vs. CCH+ CGS21680 (KO) | CCH+ CGS21680 vs. CCH+ CGS21680 (KO) |
| Tukey HSD | p=0.000 | p=0.992 | p=0.000 |
| LSD | p=0.000 | p=0.782 | p=0.000 |

Supplemental figure 10: Original data for the statistical analysis of the MBP absorbance in the optic tract at the end of 4th week after CCH (for figure 1D).

| 4w original data | CCH | CCH+ SCH58261 | CCH+ CGS21680 | CCH+ CGS21680 (KO) |
|------------------|-----|---------------|---------------|--------------------|
| optic tract | 36 | 26 | 45 | 24 |

| | | | | |
|--|----|----|----|----|
| | 32 | 25 | 46 | 27 |
| | 34 | 24 | 46 | 26 |
| | 37 | 24 | 52 | 25 |
| | 33 | 23 | 42 | 26 |
| | 32 | 24 | 46 | 24 |

| | | | | | | |
|--|--------------|---------------|---------------|--------------------|---------------|---------|
| | CCH | CCH+ SCH58261 | CCH+ CGS21680 | CCH+ CGS21680 (KO) | | |
| Mean ± SD | 34.00 ± 2.10 | 24.33 ± 1.03 | 46.17 ± 3.25 | 25.33 ± 1.21 | | |
| Normality: Shapiro-Wilk normality test (W) P | (0.89) 0.32 | (0.92) 0.47 | (0.85) 0.16 | (0.91) 0.42 | | |
| Homogeneity of Variances: Levene Statistic | | | | | F(3,20)=0.938 | p=0.441 |
| One way ANOVA | | | | | F=140.378 | p=0.000 |

| | | | |
|----------------------|---------------------------------|--------------------------------------|--------------------------------------|
| Multiple Comparisons | CCH vs. CCH+ SCH58261 | CCH vs. CCH+ CGS21680 | CCH vs. CCH+ CGS21680(KO) |
| Tukey HSD | p=0.000 | p=0.000 | p=0.000 |
| LSD | p=0.000 | p=0.000 | p=0.000 |
| | CCH+ SCH58261 vs. CCH+ CGS21680 | CCH+ SCH58261 vs. CCH+ CGS21680 (KO) | CCH+ CGS21680 vs. CCH+ CGS21680 (KO) |
| Tukey HSD | p=0.000 | p=0.841 | p=0.000 |
| LSD | p=0.000 | p=0.417 | p=0.000 |

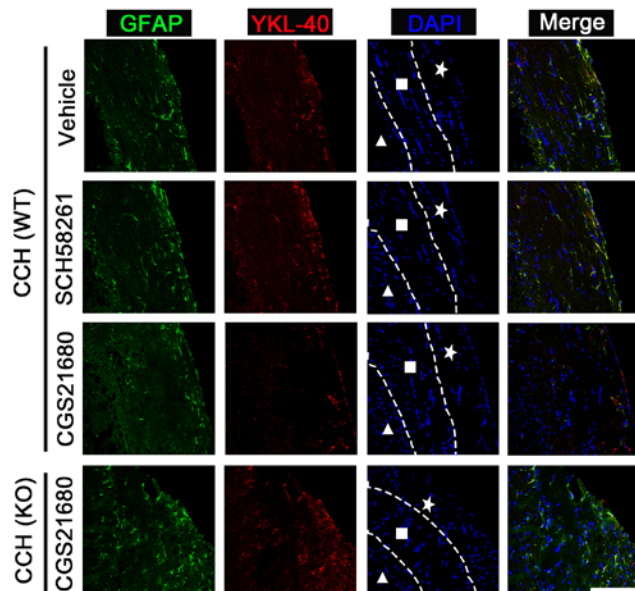
Supplemental figure 11: Original data for the statistical analysis of the MBP absorbance in the optic tract at the end of 6th week after CCH (for figure 1D).

| | | | | |
|------------------|-----|---------------|---------------|--------------------|
| 6w original data | CCH | CCH+ SCH58261 | CCH+ CGS21680 | CCH+ CGS21680 (KO) |
| optic tract | 25 | 16 | 35 | 11 |
| | 23 | 14 | 34 | 15 |
| | 24 | 14 | 33 | 16 |
| | 21 | 14 | 32 | 8 |
| | 22 | 15 | 31 | 13 |
| | 25 | 11 | 32 | 15 |

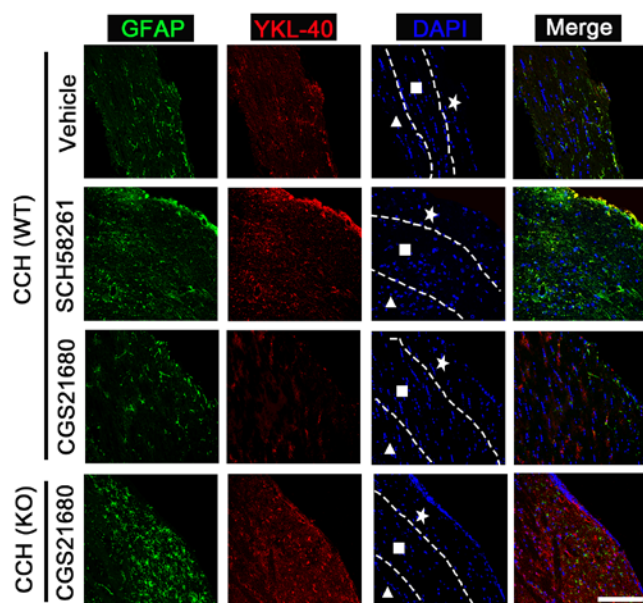
| | | | | | | |
|--|--------------|---------------|---------------|--------------------|---------------|---------|
| | CCH | CCH+ SCH58261 | CCH+ CGS21680 | CCH+ CGS21680 (KO) | | |
| Mean ± SD | 23.33 ± 1.63 | 14.00 ± 1.67 | 32.83 ± 1.47 | 13.00 ± 3.03 | | |
| Normality: Shapiro-Wilk normality test (W) P | (0.92) 0.51 | (0.87) 0.24 | (0.96) 0.80 | (0.90) 0.39 | | |
| Homogeneity of Variances: Levene Statistic | | | | | F(3,20)=1.615 | p=0.218 |
| One way ANOVA | | | | | F=122.756 | p=0.000 |

| | | | |
|----------------------|---------------------------------|--------------------------------------|--------------------------------------|
| Multiple Comparisons | CCH vs. CCH+ SCH58261 | CCH vs. CCH+ CGS21680 | CCH vs. CCH+ CGS21680(KO) |
| Tukey HSD | p=0.000 | p=0.000 | p=0.000 |
| LSD | p=0.000 | p=0.000 | p=0.000 |
| | CCH+ SCH58261 vs. CCH+ CGS21680 | CCH+ SCH58261 vs. CCH+ CGS21680 (KO) | CCH+ CGS21680 vs. CCH+ CGS21680 (KO) |
| Tukey HSD | p=0.000 | p=0.833 | p=0.000 |
| LSD | p=0.000 | p=0.408 | p=0.000 |

Supplemental figure 12: Immunofluorescence for astrocyte activation and YKL-40 expression at the end of 4th week post CCH. The astrocyte-specific marker GFAP was labeled with Alexa Fluor 488 (green), while the YKL-40 was labeled with Alexa Fluor 555 (red). The white pentagram, the foursquare and the solid triangle indicate the corpus callosum area, the internal capsule area, and the optic tract area, respectively. Scale bars = 20 μ m.



Supplemental figure 13: Immunofluorescence for astrocyte activation and YKL-40 expression at the end of 6th week post CCH. The astrocyte-specific marker GFAP was labeled with Alexa Fluor 488 (green), while the YKL-40 was labeled with Alexa Fluor 555 (red). The white pentagram, the foursquare and the solid triangle indicate the corpus callosum area, the internal capsule area, and the optic tract area, respectively. Scale bars = 20 μ m.



Supplemental figure 14: Original data for the statistical analysis of YKL-40⁺ cells in the corpus callosum at the end of 2nd week after CCH (for figure 2B).

| 2w original data | CCH | CCH+ SCH58261 | CCH+ CGS21680 | CCH+ CGS21680 (KO) |
|------------------|-----|---------------|---------------|--------------------|
| corpus callosum | 29 | 79 | 10 | 71 |
| | 33 | 55 | 14 | 73 |
| | 26 | 69 | 17 | 62 |
| | 37 | 79 | 14 | 61 |
| | 35 | 66 | 18 | 74 |
| | 36 | 63 | 17 | 80 |

| | CCH | CCH+ SCH58261 | CCH+ CGS21680 | CCH+ CGS21680 (KO) | | |
|--|------------------|------------------|------------------|--------------------|---------------|---------|
| Mean \pm SD | 32.67 \pm 4.32 | 68.50 \pm 9.38 | 15.00 \pm 2.97 | 70.17 \pm 7.36 | | |
| Normality: Shapiro-Wilk normality test (W) P | (0.91) 0.43 | (0.93) 0.56 | (0.89) 0.31 | (0.92) 0.49 | | |
| Homogeneity of Variances: Levene Statistic | | | | | F(3,20)=2.451 | p=0.093 |
| One way ANOVA | | | | | F=105.121 | p=0.000 |

| Multiple Comparisons | CCH vs. CCH+ SCH58261 | CCH vs. CCH+ CGS21680 | CCH vs. CCH+ CGS21680(KO) |
|----------------------|---------------------------------|--------------------------------------|--------------------------------------|
| Tukey HSD | p=0.000 | p=0.001 | p=0.000 |
| LSD | p=0.000 | p=0.000 | p=0.000 |
| | CCH+ SCH58261 vs. CCH+ CGS21680 | CCH+ SCH58261 vs. CCH+ CGS21680 (KO) | CCH+ CGS21680 vs. CCH+ CGS21680 (KO) |
| Tukey HSD | p=0.000 | p=0.970 | p=0.000 |
| LSD | p=0.000 | p=0.662 | p=0.000 |

Supplemental figure 15: Original data for the statistical analysis of YKL-40⁺ cells in the corpus callosum at the end of 4th week after CCH (for figure 2B).

| 4w original data | CCH | CCH+ SCH58261 | CCH+ CGS21680 | CCH+ CGS21680 (KO) |
|------------------|-----|---------------|---------------|--------------------|
| corpus callosum | 61 | 104 | 66 | 103 |
| | 60 | 98 | 69 | 115 |
| | 76 | 97 | 55 | 91 |
| | 69 | 102 | 42 | 108 |
| | 72 | 94 | 44 | 99 |
| | 75 | 100 | 55 | 110 |

| | CCH | CCH+ SCH58261 | CCH+ CGS21680 | CCH+ CGS21680 (KO) | | |
|--|------------------|------------------|-------------------|--------------------|---------------|---------|
| Mean \pm SD | 69.83 \pm 5.71 | 99.17 \pm 3.60 | 55.17 \pm 11.02 | 104.33 \pm 8.57 | | |
| Normality: Shapiro-Wilk normality test (W) P | (0.95) 0.74 | (0.99) 0.99 | (0.91) 0.46 | (0.98) 0.95 | | |
| Homogeneity of Variances: Levene Statistic | | | | | F(3,20)=1.875 | p=0.166 |
| One way ANOVA | | | | | F=55.298 | p=0.000 |

| Multiple Comparisons | CCH vs. CCH+ SCH58261 | CCH vs. CCH+ CGS21680 | CCH vs. CCH+ CGS21680(KO) |
|----------------------|---------------------------------|--------------------------------------|--------------------------------------|
| Tukey HSD | p=0.000 | p=0.018 | p=0.000 |
| LSD | p=0.000 | p=0.004 | p=0.000 |
| | CCH+ SCH58261 vs. CCH+ CGS21680 | CCH+ SCH58261 vs. CCH+ CGS21680 (KO) | CCH+ CGS21680 vs. CCH+ CGS21680 (KO) |
| Tukey HSD | p=0.000 | p=0.661 | p=0.000 |

| | | | |
|-----|---------|---------|---------|
| LSD | p=0.000 | p=0.262 | p=0.000 |
|-----|---------|---------|---------|

Supplemental figure 16: Original data for the statistical analysis of YKL-40⁺ cells in the corpus callosum at the end of 6th week after CCH (for figure 2B).

| 6w original data | CCH | CCH+ SCH58261 | CCH+ CGS21680 | CCH+ CGS21680 (KO) |
|------------------|-----|---------------|---------------|--------------------|
| corpus callosum | 105 | 157 | 67 | 124 |
| | 95 | 130 | 107 | 165 |
| | 98 | 149 | 62 | 129 |
| | 118 | 143 | 107 | 147 |
| | 125 | 154 | 83 | 162 |
| | 110 | 163 | 64 | 125 |

| | CCH | CCH+ SCH58261 | CCH+ CGS21680 | CCH+ CGS21680 (KO) | | |
|--|---------------|----------------|---------------|--------------------|---------------|---------|
| Mean ± SD | 108.50± 11.57 | 149.33 ± 11.67 | 81.67 ± 20.97 | 142.00± 18.63 | | |
| Normality: Shapiro-Wilk normality test (W) P | (0.96) 0.82 | (0.96) 0.83 | (0.82) 0.09 | (0.85) 0.15 | | |
| Homogeneity of Variances: Levene Statistic | | | | | F(3,20)=2.461 | p=0.092 |
| One way ANOVA | | | | | F=22.289 | p=0.000 |

| Multiple Comparisons | CCH vs. CCH+ SCH58261 | CCH vs. CCH+ CGS21680 | CCH vs. CCH+ CGS21680(KO) |
|----------------------|---------------------------------|--------------------------------------|--------------------------------------|
| Tukey HSD | p=0.002 | p=0.044 | p=0.010 |
| LSD | p=0.000 | p=0.010 | p=0.002 |
| | CCH+ SCH58261 vs. CCH+ CGS21680 | CCH+ SCH58261 vs. CCH+ CGS21680 (KO) | CCH+ CGS21680 vs. CCH+ CGS21680 (KO) |
| Tukey HSD | p=0.000 | p=0.862 | p=0.000 |
| LSD | p=0.000 | p=0.444 | p=0.000 |

Supplemental figure 17: Original data for the statistical analysis of YKL-40⁺ cells in the internal capsule at the end of 2nd week after CCH (for figure 2C).

| 2w original data | CCH | CCH+ SCH58261 | CCH+ CGS21680 | CCH+ CGS21680 (KO) |
|------------------|-----|---------------|---------------|--------------------|
| internal capsule | 44 | 71 | 19 | 75 |
| | 43 | 69 | 25 | 59 |
| | 32 | 64 | 27 | 71 |
| | 32 | 81 | 26 | 81 |
| | 42 | 74 | 23 | 85 |
| | 42 | 77 | 16 | 74 |

| | CCH | CCH+ SCH58261 | CCH+ CGS21680 | CCH+ CGS21680 (KO) | | |
|--|-------------|---------------|---------------|--------------------|---------------|---------|
| Mean ± SD | 39.17± 5.60 | 72.67 ± 6.02 | 22.67 ± 4.32 | 74.17± 9.00 | | |
| Normality: Shapiro-Wilk normality test (W) P | (0.83) 0.10 | (0.99) 0.99 | (0.91) 0.43 | (0.95) 0.74 | | |
| Homogeneity of Variances: Levene Statistic | | | | | F(3,20)=0.552 | p=0.653 |
| One way ANOVA | | | | | F=92.953 | p=0.000 |

| Multiple Comparisons | CCH vs. CCH+ SCH58261 | CCH vs. CCH+ CGS21680 | CCH vs. CCH+ CGS21680(KO) |
|----------------------|-----------------------|-----------------------|---------------------------|
| Tukey HSD | p=0.000 | p=0.001 | p=0.000 |

| | | | |
|-----------|---------------------------------|--------------------------------------|--------------------------------------|
| LSD | p=0.000 | p=0.000 | p=0.000 |
| | CCH+ SCH58261 vs. CCH+ CGS21680 | CCH+ SCH58261 vs. CCH+ CGS21680 (KO) | CCH+ CGS21680 vs. CCH+ CGS21680 (KO) |
| Tukey HSD | p=0.000 | p=0.977 | p=0.000 |
| LSD | p=0.000 | p=0.692 | p=0.000 |

Supplemental figure 18: Original data for the statistical analysis of YKL-40⁺ cells in the internal capsule at the end of 4th week after CCH (for figure 2C).

| 4w original data | CCH | CCH+ SCH58261 | CCH+ CGS21680 | CCH+ CGS21680 (KO) |
|------------------|-----|---------------|---------------|--------------------|
| internal capsule | 74 | 108 | 59 | 132 |
| | 78 | 112 | 58 | 127 |
| | 84 | 108 | 41 | 100 |
| | 65 | 118 | 56 | 95 |
| | 51 | 103 | 49 | 127 |
| | 71 | 96 | 44 | 116 |

| | CCH | CCH+ SCH58261 | CCH+ CGS21680 | CCH+ CGS21680 (KO) | | |
|--|---------------|---------------|---------------|--------------------|---------------|---------|
| Mean ± SD | 70.50 ± 11.50 | 107.50 ± 7.53 | 51.17 ± 7.63 | 116.17 ± 15.46 | | |
| Normality: Shapiro-Wilk normality test (W) P | (0.96) 0.78 | (0.98) 0.95 | (0.89) 0.34 | (0.88) 0.25 | | |
| Homogeneity of Variances: Levene Statistic | | | | | F(3,20)=1.816 | p=0.177 |
| One way ANOVA | | | | | F=46.497 | p=0.000 |

| Multiple Comparisons | CCH vs. CCH+ SCH58261 | CCH vs. CCH+ CGS21680 | CCH vs. CCH+ CGS21680(KO) |
|----------------------|---------------------------------|--------------------------------------|--------------------------------------|
| Tukey HSD | p=0.000 | p=0.030 | p=0.000 |
| LSD | p=0.000 | p=0.007 | p=0.000 |
| | CCH+ SCH58261 vs. CCH+ CGS21680 | CCH+ SCH58261 vs. CCH+ CGS21680 (KO) | CCH+ CGS21680 vs. CCH+ CGS21680 (KO) |
| Tukey HSD | p=0.000 | p=0.537 | p=0.000 |
| LSD | p=0.000 | p=0.188 | p=0.000 |

Supplemental figure 19: Original data for the statistical analysis of YKL-40⁺ cells in the internal capsule at the end of 6th week after CCH (for figure 2C).

| 6w original data | CCH | CCH+ SCH58261 | CCH+ CGS21680 | CCH+ CGS21680 (KO) |
|------------------|-----|---------------|---------------|--------------------|
| internal capsule | 108 | 153 | 79 | 156 |
| | 102 | 177 | 92 | 161 |
| | 112 | 154 | 89 | 142 |
| | 91 | 164 | 63 | 162 |
| | 113 | 143 | 87 | 178 |
| | 109 | 159 | 78 | 186 |

| | CCH | CCH+ SCH58261 | CCH+ CGS21680 | CCH+ CGS21680 (KO) | | |
|--|---------------|----------------|---------------|--------------------|---------------|---------|
| Mean ± SD | 105.83 ± 8.23 | 158.33 ± 11.52 | 81.33 ± 10.56 | 164.17 ± 15.75 | | |
| Normality: Shapiro-Wilk normality test (W) P | (0.86) 0.18 | (0.97) 0.91 | (0.90) 0.40 | (0.96) 0.84 | | |
| Homogeneity of Variances: Levene Statistic | | | | | F(3,20)=0.735 | p=0.543 |

| | | | | | | |
|---------------|--|--|--|--|----------|---------|
| One way ANOVA | | | | | F=69.933 | p=0.000 |
|---------------|--|--|--|--|----------|---------|

| | | | |
|----------------------|---------------------------------|--------------------------------------|--------------------------------------|
| Multiple Comparisons | CCH vs. CCH+ SCH58261 | CCH vs. CCH+ CGS21680 | CCH vs. CCH+ CGS21680(KO) |
| Tukey HSD | p=0.000 | p=0.009 | p=0.000 |
| LSD | p=0.000 | p=0.002 | p=0.000 |
| | CCH+ SCH58261 vs. CCH+ CGS21680 | CCH+ SCH58261 vs. CCH+ CGS21680 (KO) | CCH+ CGS21680 vs. CCH+ CGS21680 (KO) |
| Tukey HSD | p=0.000 | p=0.828 | p=0.000 |
| LSD | p=0.000 | p=0.403 | p=0.000 |

Supplemental figure 20: Original data for the statistical analysis of YKL-40⁺ cells in the optic tract at the end of 2nd week after CCH (for figure 2D).

| 2w original data | CCH | CCH+ SCH58261 | CCH+ CGS21680 | CCH+ CGS21680 (KO) |
|------------------|-----|---------------|---------------|--------------------|
| optic tract | 29 | 40 | 14 | 38 |
| | 22 | 49 | 11 | 51 |
| | 22 | 47 | 10 | 54 |
| | 30 | 48 | 5 | 47 |
| | 20 | 56 | 15 | 45 |
| | 21 | 55 | 13 | 50 |

| | CCH | CCH+ SCH58261 | CCH+ CGS21680 | CCH+ CGS21680 (KO) | | |
|--|--------------|---------------|---------------|--------------------|---------------|---------|
| Mean ± SD | 24.00 ± 4.34 | 49.173 ± 5.85 | 11.33 ± 3.61 | 47.50 ± 5.61 | | |
| Normality: Shapiro-Wilk normality test (W) P | (0.80) 0.06 | (0.93) 0.60 | (0.91) 0.47 | (0.95) 0.75 | | |
| Homogeneity of Variances: Levene Statistic | | | | | F(3,20)=0.407 | p=0.750 |
| One way ANOVA | | | | | F=83.832 | p=0.000 |

| | | | |
|----------------------|---------------------------------|--------------------------------------|--------------------------------------|
| Multiple Comparisons | CCH vs. CCH+ SCH58261 | CCH vs. CCH+ CGS21680 | CCH vs. CCH+ CGS21680(KO) |
| Tukey HSD | p=0.000 | p=0.001 | p=0.000 |
| LSD | p=0.000 | p=0.000 | p=0.000 |
| | CCH+ SCH58261 vs. CCH+ CGS21680 | CCH+ SCH58261 vs. CCH+ CGS21680 (KO) | CCH+ CGS21680 vs. CCH+ CGS21680 (KO) |
| Tukey HSD | p=0.000 | p=0.936 | p=0.000 |
| LSD | p=0.000 | p=0.565 | p=0.000 |

Supplemental figure 21: Original data for the statistical analysis of YKL-40⁺ cells in the optic tract at the end of 4th week after CCH (for figure 2D).

| 4w original data | CCH | CCH+ SCH58261 | CCH+ CGS21680 | CCH+ CGS21680 (KO) |
|------------------|-----|---------------|---------------|--------------------|
| optic tract | 68 | 107 | 35 | 119 |
| | 59 | 118 | 34 | 86 |
| | 67 | 102 | 45 | 104 |
| | 58 | 100 | 33 | 110 |
| | 55 | 85 | 37 | 111 |
| | 62 | 101 | 45 | 120 |

| | CCH | CCH+ SCH58261 | CCH+ CGS21680 | CCH+ CGS21680 (KO) | | |
|--|-----|---------------|---------------|--------------------|--|--|
|--|-----|---------------|---------------|--------------------|--|--|

| | | | | | | |
|--|--------------|----------------|--------------|----------------|---------------|---------|
| Mean ± SD | 61.50 ± 5.17 | 102.17 ± 10.72 | 38.17 ± 5.46 | 108.33 ± 12.47 | | |
| Normality: Shapiro-Wilk normality test (W) P | (0.93) 0.59 | (0.94) 0.68 | (0.81) 0.07 | (0.88) 0.27 | | |
| Homogeneity of Variances: Levene Statistic | | | | | F(3,20)=0.898 | p=0.460 |
| One way ANOVA | | | | | F=82.282 | p=0.000 |

| | | | |
|----------------------|---------------------------------|--------------------------------------|--------------------------------------|
| Multiple Comparisons | CCH vs. CCH+ SCH58261 | CCH vs. CCH+ CGS21680 | CCH vs. CCH+ CGS21680(KO) |
| Tukey HSD | p=0.000 | p=0.001 | p=0.000 |
| LSD | p=0.000 | p=0.000 | p=0.000 |
| | CCH+ SCH58261 vs. CCH+ CGS21680 | CCH+ SCH58261 vs. CCH+ CGS21680 (KO) | CCH+ CGS21680 vs. CCH+ CGS21680 (KO) |
| Tukey HSD | p=0.000 | p=0.645 | p=0.000 |
| LSD | p=0.000 | p=0.251 | p=0.000 |

Supplemental figure 22: Original data for the statistical analysis of YKL-40⁺ cells in the optic tract at the end of 6th week after CCH (for figure 2D).

| 6w original data | CCH | CCH+ SCH58261 | CCH+ CGS21680 | CCH+ CGS21680 (KO) |
|------------------|-----|---------------|---------------|--------------------|
| optic tract | 120 | 137 | 90 | 136 |
| | 105 | 121 | 85 | 144 |
| | 93 | 122 | 73 | 126 |
| | 102 | 130 | 82 | 132 |
| | 109 | 145 | 79 | 112 |
| | 117 | 127 | 67 | 152 |

| | | | | | | |
|--|---------------|---------------|---------------|--------------------|---------------|---------|
| | CCH | CCH+ SCH58261 | CCH+ CGS21680 | CCH+ CGS21680 (KO) | | |
| Mean ± SD | 107.67 ± 9.95 | 130.33 ± 9.24 | 79.33 ± 8.31 | 133.67 ± 14.00 | | |
| Normality: Shapiro-Wilk normality test (W) P | (0.97) 0.90 | (0.93) 0.56 | (0.98) 0.96 | (0.99) 0.99 | | |
| Homogeneity of Variances: Levene Statistic | | | | | F(3,20)=0.510 | p=0.680 |
| One way ANOVA | | | | | F=33.626 | p=0.000 |

| | | | |
|----------------------|---------------------------------|--------------------------------------|--------------------------------------|
| Multiple Comparisons | CCH vs. CCH+ SCH58261 | CCH vs. CCH+ CGS21680 | CCH vs. CCH+ CGS21680(KO) |
| Tukey HSD | p=0.007 | p=0.001 | p=0.002 |
| LSD | p=0.001 | p=0.000 | p=0.000 |
| | CCH+ SCH58261 vs. CCH+ CGS21680 | CCH+ SCH58261 vs. CCH+ CGS21680 (KO) | CCH+ CGS21680 vs. CCH+ CGS21680 (KO) |
| Tukey HSD | p=0.000 | p=0.947 | p=0.000 |
| LSD | p=0.000 | p=0.592 | p=0.000 |

Supplemental figure 23: Original data for the statistical analysis of YKL-40 mRNA in the cerebrum at the end of 2nd week after CCH (for figure 2E).

| 2w original data | sham | CCH | CCH+ SCH58261 | CCH+ CGS21680 | CCH+ CGS21680 (KO) |
|------------------|------|------|---------------|---------------|--------------------|
| YKL-40 mRNA | 1.00 | 2.46 | 4.03 | 1.28 | 3.98 |
| | 1.00 | 1.75 | 3.70 | 1.48 | 2.81 |
| | 1.00 | 2.25 | 3.79 | 1.05 | 4.03 |
| | 1.00 | 1.96 | 4.13 | 0.87 | 3.54 |
| | 1.00 | 2.14 | 3.94 | 1.17 | 3.58 |

| | | | | | |
|--|------|------|------|------|------|
| | 1.00 | 2.73 | 3.24 | 1.21 | 3.49 |
|--|------|------|------|------|------|

| | sham | CCH | CCH+ SCH58261 | CCH+ CGS21680 | CCH+ CGS21680 (KO) | | |
|--|-------------|-------------|---------------|---------------|--------------------|---------------|---------|
| Mean ± SD | 1.00 ± 0.00 | 2.22 ± 0.35 | 3.81 ± 0.32 | 1.18 ± 0.21 | 3.57 ± 0.44 | | |
| Normality: Shapiro-Wilk normality test (W) P | (1.00) 1.00 | (0.99) 0.99 | (0.91) 0.44 | (0.99) 0.99 | (0.89) 0.31 | | |
| Homogeneity of Variances: Levene Statistic | | | | | | F(4,25)=2.248 | p=0.093 |
| One way ANOVA | | | | | | F=111.457 | p=0.000 |

| Multiple Comparisons | Sham vs. CCH | CCH+ vs. CCH+ SCH58261 | CCH vs. CCH+ CGS21680 | CCH+ vs. CCH+ CGS21680 (KO) |
|----------------------|---------------------------------|--------------------------------------|--------------------------------------|-----------------------------|
| Tukey HSD | p=0.000 | p=0.000 | p=0.000 | p=0.000 |
| LSD | p=0.000 | p=0.000 | p=0.000 | p=0.000 |
| | CCH+ SCH58261 vs. CCH+ CGS21680 | CCH+ SCH58261 vs. CCH+ CGS21680 (KO) | CCH+ CGS21680 vs. CCH+ CGS21680 (KO) | |
| Tukey HSD | p=0.000 | p=0.647 | p=0.000 | |
| LSD | p=0.000 | p=0.194 | p=0.000 | |

Supplemental figure 24: Original data for the statistical analysis of *YKL-40* mRNA in the cerebrum at the end of 4th week after CCH (for figure 2E).

| 4w original data | sham | CCH | CCH+ SCH58261 | CCH+ CGS21680 | CCH+ CGS21680 (KO) |
|--------------------|------|------|---------------|---------------|--------------------|
| <i>YKL-40</i> mRNA | 1.00 | 3.47 | 7.88 | 1.59 | 7.76 |
| | 1.00 | 2.98 | 7.55 | 1.71 | 8.05 |
| | 1.00 | 3.90 | 7.23 | 1.97 | 6.34 |
| | 1.00 | 3.63 | 8.27 | 1.61 | 7.07 |
| | 1.00 | 3.68 | 6.94 | 1.57 | 7.61 |
| | 1.00 | 3.33 | 7.58 | 1.84 | 7.24 |

| | sham | CCH | CCH+ SCH58261 | CCH+ CGS21680 | CCH+ CGS21680 (KO) | | |
|--|-------------|-------------|---------------|---------------|--------------------|---------------|---------|
| Mean ± SD | 1.00 ± 0.00 | 3.50 ± 0.32 | 7.58 ± 0.47 | 1.72 ± 0.16 | 7.35 ± 0.61 | | |
| Normality: Shapiro-Wilk normality test (W) P | (1.00) 1.00 | (0.97) 0.91 | (0.99) 0.97 | (0.88) 0.27 | (0.96) 0.80 | | |
| Homogeneity of Variances: Levene Statistic | | | | | | F(4,25)=4.065 | p=0.011 |
| One way ANOVA | | | | | | F=400.781 | p=0.000 |

| Multiple Comparisons | Sham vs. CCH | CCH+ vs. CCH+ SCH58261 | CCH vs. CCH+ CGS21680 | CCH+ vs. CCH+ CGS21680 (KO) |
|----------------------|---------------------------------|--------------------------------------|--------------------------------------|-----------------------------|
| Tukey HSD | p=0.000 | p=0.000 | p=0.000 | p=0.000 |
| LSD | p=0.000 | p=0.000 | p=0.000 | p=0.000 |
| | CCH+ SCH58261 vs. CCH+ CGS21680 | CCH+ SCH58261 vs. CCH+ CGS21680 (KO) | CCH+ CGS21680 vs. CCH+ CGS21680 (KO) | |
| Tukey HSD | p=0.000 | p=0.828 | p=0.000 | |
| LSD | p=0.000 | p=0.302 | p=0.000 | |

Supplemental figure 25: Original data for the statistical analysis of *YKL-40* mRNA in the cerebrum at the end of 6th week after CCH (for figure 2E).

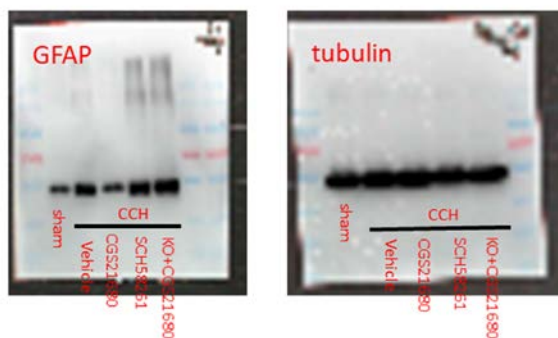
| | | | | | |
|------------------|------|------|---------------|---------------|--------------------|
| 6w original data | sham | CCH | CCH+ SCH58261 | CCH+ CGS21680 | CCH+ CGS21680 (KO) |
| YKL-40 mRNA | 1.00 | 7.17 | 17.38 | 2.75 | 14.34 |
| | 1.00 | 5.52 | 14.28 | 2.24 | 15.36 |
| | 1.00 | 6.77 | 16.73 | 2.52 | 15.19 |
| | 1.00 | 5.98 | 14.09 | 3.63 | 12.24 |
| | 1.00 | 8.86 | 15.58 | 4.09 | 16.47 |
| | 1.00 | 7.24 | 14.50 | 3.07 | 15.01 |

| | | | | | | | |
|--|-------------|-------------|---------------|---------------|--------------------|---------------|---------|
| | sham | CCH | CCH+ SCH58261 | CCH+ CGS21680 | CCH+ CGS21680 (KO) | | |
| Mean ± SD | 1.00 ± 0.00 | 6.92 ± 1.17 | 15.43 ± 1.38 | 3.05 ± 0.70 | 14.77 ± 1.42 | | |
| Normality: Shapiro-Wilk normality test (W) P | (1.00) 1.00 | (0.95) 0.72 | (0.88) 0.29 | (0.96) 0.79 | (0.91) 0.42 | | |
| Homogeneity of Variances: Levene Statistic | | | | | | F(4,25)=3.255 | p=0.028 |
| One way ANOVA | | | | | | F=228.360 | p=0.000 |

| | | | | |
|----------------------|---------------------------------|--------------------------------------|--------------------------------------|-----------------------------|
| Multiple Comparisons | Sham vs. CCH | CCH+ vs. CCH+ SCH58261 | CCH vs. CCH+ CGS21680 | CCH+ vs. CCH+ CGS21680 (KO) |
| Tukey HSD | p=0.000 | p=0.000 | p=0.000 | p=0.000 |
| LSD | p=0.000 | p=0.000 | p=0.000 | p=0.000 |
| | CCH+ SCH58261 vs. CCH+ CGS21680 | CCH+ SCH58261 vs. CCH+ CGS21680 (KO) | CCH+ CGS21680 vs. CCH+ CGS21680 (KO) | |
| Tukey HSD | p=0.000 | p=0.824 | p=0.000 | |
| LSD | p=0.000 | p=0.298 | p=0.000 | |

Supplemental figure 26: The original WB blots and original data for the statistical analysis of GFAP protein in the cerebrum at the end of 6th week after CCH (for figure 3B-C).

Figure 3



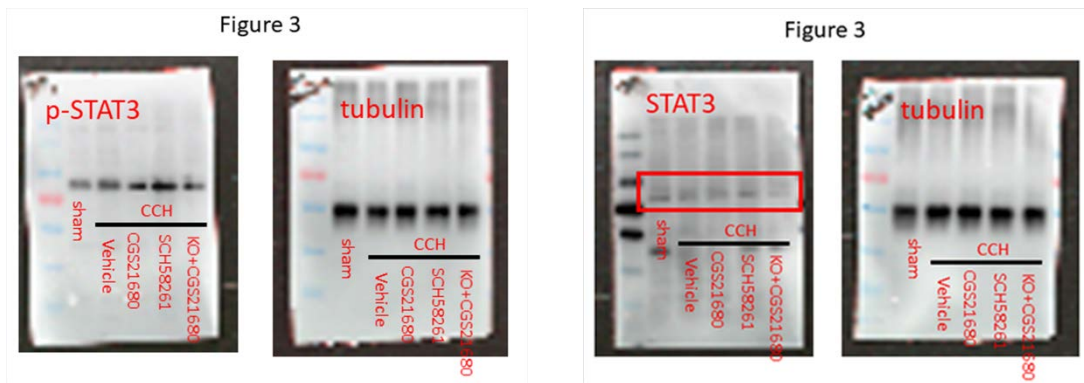
| | | | | | |
|---------------|-------|-------|---------------|---------------|--------------------|
| original data | sham | CCH | CCH+ CGS21680 | CCH+ SCH58261 | CCH+ CGS21680 (KO) |
| GFAP protein | 1.000 | 4.135 | 1.135 | 6.475 | 7.415 |
| (% of sham) | 1.000 | 3.579 | 1.247 | 7.324 | 6.859 |
| | 1.000 | 4.058 | 0.849 | 5.682 | 6.489 |
| | 1.000 | 3.353 | 1.456 | 6.985 | 7.548 |
| | 1.000 | 3.876 | 1.357 | 7.148 | 6.358 |

| | | | | | | | |
|--|------|-----|------|------|------|--|--|
| | sham | CCH | CCH+ | CCH+ | CCH+ | | |
|--|------|-----|------|------|------|--|--|

| | | | | | | | |
|--|-------------|-------------|-------------|-------------|---------------|---------------|---------|
| | | | CGS21680 | SCH58261 | CGS21680 (KO) | | |
| Mean ± SD | 1.00 ± 0.00 | 3.80 ± 0.33 | 1.21 ± 0.23 | 6.72 ± 0.66 | 6.93 ± 0.53 | | |
| Normality: Shapiro-Wilk normality test (W) P | (1.00) 1.00 | (0.93) 0.61 | (0.95) 0.75 | (0.90) 0.39 | (0.90) 0.41 | | |
| Homogeneity of Variances: Levene Statistic | | | | | | F(4,20)=5.634 | p=0.003 |
| One way ANOVA | | | | | | F=231.056 | p=0.000 |

| | | | | |
|----------------------|---------------------------------|--------------------------------------|--------------------------------------|-----------------------------|
| Multiple Comparisons | Sham vs. CCH | CCH+ vs. CCH+ CGS21680 | CCH vs. CCH+ SCH58261 | CCH+ vs. CCH+ CGS21680 (KO) |
| Tukey HSD | p=0.000 | p=0.000 | p=0.000 | p=0.000 |
| LSD | p=0.000 | p=0.000 | p=0.000 | p=0.000 |
| | CCH+ CGS21680 vs. CCH+ SCH58261 | CCH+ CGS21680 vs. CCH+ CGS21680 (KO) | CCH+ SCH58261 vs. CCH+ CGS21680 (KO) | |
| Tukey HSD | p=0.000 | p=0.000 | p=0.930 | |
| LSD | p=0.000 | p=0.000 | p=0.438 | |

Supplemental figure 27: The original WB blots and original data for the statistical analysis of STAT3 protein in the cerebrum at the end of 6th week after CCH (for figure 3B, 3D).



| | | | | | |
|-----------------------|-------|-------|---------------|---------------|--------------------|
| original data | sham | CCH | CCH+ CGS21680 | CCH+ SCH58261 | CCH+ CGS21680 (KO) |
| p-STAT3/STAT3 protein | 1.000 | 2.471 | 0.975 | 4.579 | 3.784 |
| (% of sham) | 1.000 | 2.048 | 1.247 | 3.985 | 4.017 |
| | 1.000 | 3.025 | 1.139 | 4.753 | 4.382 |
| | 1.000 | 2.846 | 1.048 | 4.378 | 3.956 |
| | 1.000 | 2.846 | 1.475 | 4.175 | 4.285 |

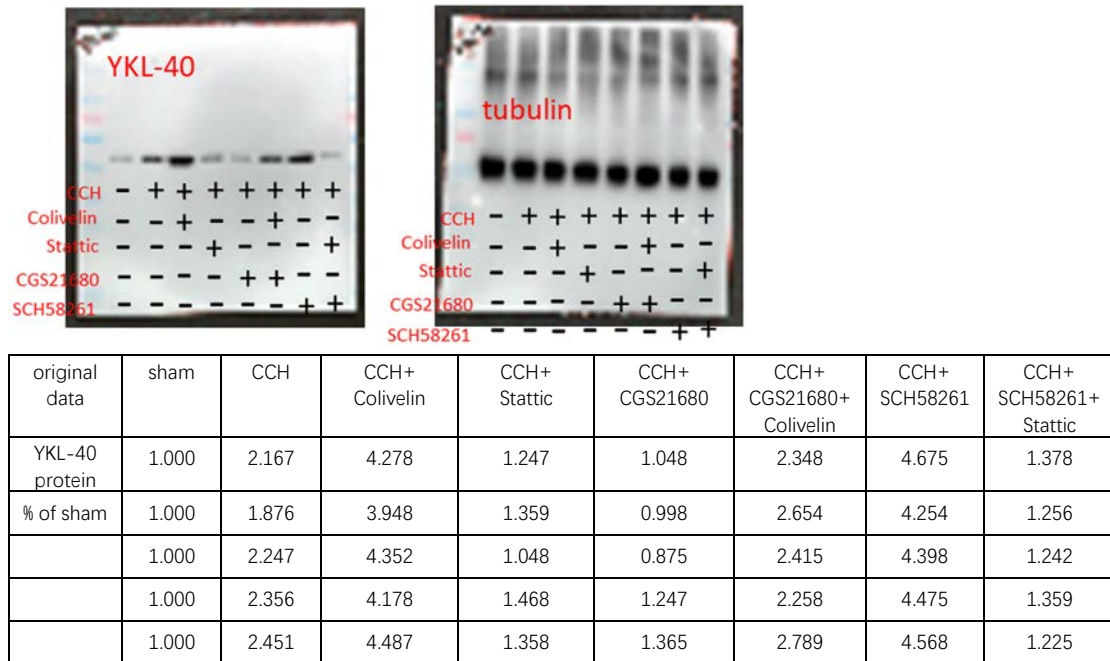
| | | | | | | | |
|--|-------------|-------------|---------------|---------------|--------------------|---------------|---------|
| | sham | CCH | CCH+ CGS21680 | CCH+ SCH58261 | CCH+ CGS21680 (KO) | | |
| Mean ± SD | 1.00 ± 0.00 | 2.65 ± 0.39 | 1.18 ± 0.20 | 4.37 ± 0.31 | 4.08 ± 0.24 | | |
| Normality: Shapiro-Wilk normality test (W) P | (1.00) 1.00 | (0.90) 0.38 | (0.95) 0.72 | (0.98) 0.94 | (0.95) 0.72 | | |
| Homogeneity of Variances: Levene Statistic | | | | | | F(4,20)=4.242 | p=0.012 |
| One way ANOVA | | | | | | F=179.625 | p=0.000 |

| | | | | |
|----------------------|--------------|------------------------|-----------------------|-----------------------------|
| Multiple Comparisons | Sham vs. CCH | CCH+ vs. CCH+ CGS21680 | CCH vs. CCH+ SCH58261 | CCH+ vs. CCH+ CGS21680 (KO) |
| Tukey HSD | p=0.000 | p=0.000 | p=0.000 | p=0.000 |

| | | | | |
|-----------|---------------------------------|--------------------------------------|--------------------------------------|---------|
| LSD | p=0.000 | p=0.000 | p=0.000 | p=0.000 |
| | CCH+ CGS21680 vs. CCH+ SCH58261 | CCH+ CGS21680 vs. CCH+ CGS21680 (KO) | CCH+ SCH58261 vs. CCH+ CGS21680 (KO) | |
| Tukey HSD | p=0.000 | p=0.000 | p=0.434 | |
| LSD | p=0.000 | p=0.000 | p=0.097 | |

Supplemental figure 28: The original WB blots and original data for the statistical analysis of YKL-40 protein in the cerebrum at the end of 6th week after CCH (for figure 3E-F).

Figure 3



| | sham | CCH | CCH+ Colivelin | CC+ Stattic | CCH+ CGS21680 | CCH+ CGS21680+ Colivelin | CCH+ SCH58261 | CCH+ SCH58261+ Stattic | | |
|--|-------------|-------------|----------------|-------------|---------------|--------------------------|---------------|------------------------|----------------|---------|
| Mean ± SD | 1.00 ± 0.00 | 2.22 ± 0.22 | 4.25 ± 0.20 | 1.30 ± 0.16 | 1.11 ± 0.20 | 2.49 ± 0.22 | 4.47 ± 0.16 | 1.29 ± 0.07 | | |
| Normality: Shapiro-Wilk normality test (W) P | (1.00) 1.00 | (0.95) 0.70 | (0.95) 0.72 | (0.98) 0.93 | (0.93) 0.57 | (0.96) 0.79 | (0.93) 0.60 | (0.99) 0.99 | | |
| Homogeneity of Variances: Levene Statistic | | | | | | | | | F(7,32) =2.402 | p=0.043 |
| One way ANOVA | | | | | | | | | F=335.330 | p=0.000 |

| Multiple Comparisons | Sham vs. CCH | CCH vs. CCH+ Colivelin | CCH vs. CCH+ Stattic | CCH+ vs. CCH+ CGS21680 |
|----------------------|---|--|---------------------------------|---------------------------------|
| Tukey HSD | p=0.000 | p=0.000 | p=0.000 | p=0.000 |
| LSD | p=0.000 | p=0.000 | p=0.000 | p=0.000 |
| | CCH vs. CCH + CGS21680 + Colivelin | CCH vs. CCH+ SCH58261 | CCH vs. CCH+ SCH58261 + Stattic | CCH+ Colivelin vs. CCH+ Stattic |
| Tukey HSD | p=0.219 | p=0.000 | p=0.000 | p=0.000 |
| LSD | p=0.016 | p=0.000 | p=0.000 | p=0.000 |
| | CCH+ CGS21680 vs. CCH+ CGS21680 + Colivelin | CCH+ SCH58261 vs. CCH+ SCH58261+ Stattic | | |

| | | | | |
|-----------|---------|---------|--|--|
| Tukey HSD | p=0.000 | p=0.000 | | |
| LSD | p=0.000 | p=0.000 | | |

Supplemental figure 29: The original WB blots and original data for the statistical analysis of STAT3 protein in astrocytes *in vitro* (for figure 4B-C).

Figure 4

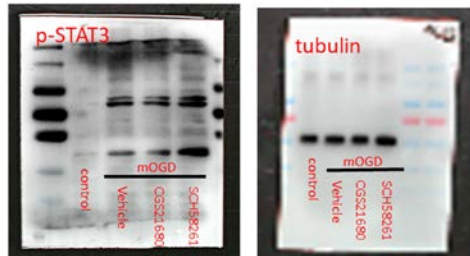
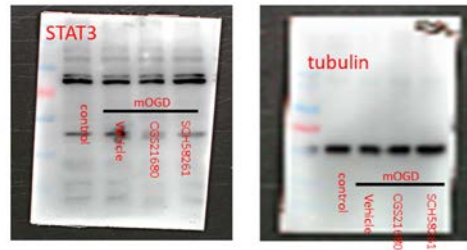


Figure 4



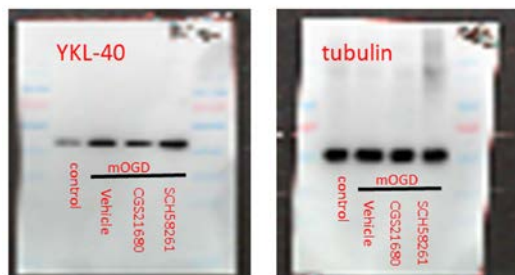
| original data | control | mOGD | mOGD + CGS21680 | mOGD + SCH58261 |
|-----------------------|---------|-------|-----------------|-----------------|
| p-STAT3/STAT3 protein | 1.000 | 3.248 | 2.496 | 4.768 |
| (% of control) | 1.000 | 3.648 | 2.578 | 4.598 |
| | 1.000 | 4.175 | 2.369 | 4.668 |
| | 1.000 | 3.853 | 2.648 | 4.387 |
| | 1.00 | 3.479 | 2.296 | 4.579 |

| | control | mOGD | mOGD + CGS21680 | mOGD + SCH58261 | | |
|--|-------------|-------------|-----------------|-----------------|---------------|---------|
| Mean ± SD | 1.00 ± 0.00 | 3.68 ± 0.35 | 2.48 ± 0.15 | 4.60 ± 0.14 | | |
| Normality: Shapiro-Wilk normality test (W) P | (1.00) 1.00 | (0.99) 0.99 | (0.96) 0.81 | (0.96) 0.90 | | |
| Homogeneity of Variances: Levene Statistic | | | | | F(3,16)=4.918 | p=0.013 |
| One way ANOVA | | | | | F=291.607 | p=0.000 |

| Multiple Comparisons | control vs. mOGD | mOGD vs. mOGD + CGS21680 | mOGD vs. mOGD + SCH58261 | mOGD + CGS21680 vs. mOGD + SCH58261 |
|----------------------|------------------|--------------------------|--------------------------|-------------------------------------|
| Tukey HSD | p=0.000 | p=0.000 | p=0.000 | p=0.000 |
| LSD | p=0.000 | p=0.000 | p=0.000 | p=0.000 |

Supplemental figure 30: The original WB blots and original data for the statistical analysis of YKL-40 protein in astrocytes *in vitro* (for figure 4B, 4D).

Figure 4



| original data | control | mOGD | mOGD + CGS21680 | mOGD + SCH58261 |
|---------------|---------|------|-----------------|-----------------|
| | | | | |

| | | | | |
|----------------|-------|-------|-------|-------|
| YKL-40 protein | 1.000 | 3.697 | 1.154 | 5.847 |
| (% of control) | 1.000 | 4.157 | 1.268 | 6.248 |
| | 1.000 | 4.068 | 1.348 | 6.079 |
| | 1.000 | 3.986 | 1.256 | 5.879 |
| | 1.000 | 4.258 | 1.378 | 5.992 |

| | | | | | | |
|--|-------------|-------------|-----------------|-----------------|---------------|---------|
| | control | mOGD | mOGD + CGS21680 | mOGD + SCH58261 | | |
| Mean ± SD | 1.00 ± 0.00 | 4.03 ± 0.21 | 1.28 ± 0.09 | 6.01 ± 0.16 | | |
| Normality: Shapiro-Wilk normality test (W) P | (1.00) 1.00 | (0.94) 0.67 | (0.95) 0.74 | (0.94) 0.66 | | |
| Homogeneity of Variances: Levene Statistic | | | | | F(3,16)=3.561 | p=0.038 |
| One way ANOVA | | | | | F=1427.148 | p=0.000 |

| | | | | |
|----------------------|------------------|--------------------------|--------------------------|-------------------------------------|
| Multiple Comparisons | control vs. mOGD | mOGD vs. mOGD + CGS21680 | mOGD vs. mOGD + SCH58261 | mOGD + CGS21680 vs. mOGD + SCH58261 |
| Tukey HSD | p=0.000 | p=0.000 | p=0.000 | p=0.000 |
| LSD | p=0.000 | p=0.000 | p=0.000 | p=0.000 |

Supplemental figure 26: The original data for the statistical analysis of *STAT3* mRNA in astrocytes *in vitro* (for figure 4E).

| | | | | |
|-------------------|---------|--------|-----------------|-----------------|
| original data | control | mOGD | mOGD + CGS21680 | mOGD + SCH58261 |
| <i>STAT3</i> mRNA | 1.000 | 8.478 | 4.687 | 13.597 |
| (% of control) | 1.000 | 9.687 | 3.468 | 12.635 |
| | 1.000 | 10.475 | 6.985 | 11.489 |
| | 1.000 | 9.542 | 7.635 | 13.549 |
| | 1.000 | 8.798 | 6.358 | 14.756 |

| | | | | | | |
|--|-------------|-------------|-----------------|-----------------|---------------|---------|
| | control | mOGD | mOGD + CGS21680 | mOGD + SCH58261 | | |
| Mean ± SD | 1.00 ± 0.00 | 9.40 ± 0.79 | 5.83 ± 1.71 | 13.21 ± 1.22 | | |
| Normality: Shapiro-Wilk normality test (W) P | (1.00) 1.00 | (0.96) 0.82 | (0.94) 0.67 | (0.97) 0.88 | | |
| Homogeneity of Variances: Levene Statistic | | | | | F(3,16)=6.296 | p=0.005 |
| One way ANOVA | | | | | F=107.217 | p=0.000 |

| | | | | |
|----------------------|------------------|--------------------------|--------------------------|-------------------------------------|
| Multiple Comparisons | control vs. mOGD | mOGD vs. mOGD + CGS21680 | mOGD vs. mOGD + SCH58261 | mOGD + CGS21680 vs. mOGD + SCH58261 |
| Tukey HSD | p=0.000 | p=0.001 | p=0.000 | p=0.000 |
| LSD | p=0.000 | p=0.000 | p=0.000 | p=0.000 |

Supplemental figure 31: The original data for the statistical analysis of *YKL-40* mRNA in astrocytes *in vitro* (for figure 4F).

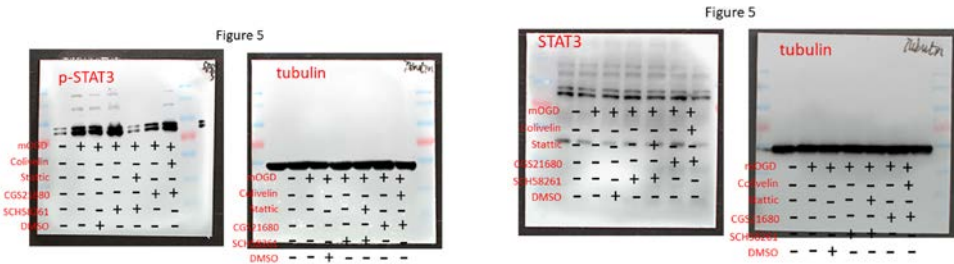
| | | | | |
|--------------------|---------|-------|-----------------|-----------------|
| original data | control | mOGD | mOGD + CGS21680 | mOGD + SCH58261 |
| <i>YKL-40</i> mRNA | 1.000 | 8.695 | 4.127 | 6.682 |
| (% of control) | 1.000 | 7.358 | 2.596 | 5.351 |
| | 1.000 | 9.145 | 3.557 | 7.496 |

| | | | | |
|--|-------|-------|-------|-------|
| | 1.000 | 7.586 | 4.015 | 7.562 |
| | 1.000 | 8.567 | 3.887 | 5.697 |

| | | | | | | |
|--|-------------|-------------|-----------------|-----------------|---------------|---------|
| | control | mOGD | mOGD + CGS21680 | mOGD + SCH58261 | | |
| Mean ± SD | 1.00 ± 0.00 | 8.27 ± 0.76 | 3.64 ± 0.62 | 6.56 ± 1.01 | | |
| Normality: Shapiro-Wilk normality test (W) P | (1.00) 1.00 | (0.91) 0.45 | (0.83) 0.14 | (0.88) 0.33 | | |
| Homogeneity of Variances: Levene Statistic | | | | | F(3,16)=6.654 | p=0.004 |
| One way ANOVA | | | | | F=103.401 | p=0.000 |

| | | | | |
|----------------------|------------------|--------------------------|--------------------------|-------------------------------------|
| Multiple Comparisons | control vs. mOGD | mOGD vs. mOGD + CGS21680 | mOGD vs. mOGD + SCH58261 | mOGD + CGS21680 vs. mOGD + SCH58261 |
| Tukey HSD | p=0.000 | p=0.000 | p=0.007 | p=0.000 |
| LSD | p=0.000 | p=0.000 | p=0.001 | p=0.000 |

Supplemental figure 32: The original data for the statistical analysis of STAT3 protein in astrocytes *in vitro* (for figure 5B, 5C).



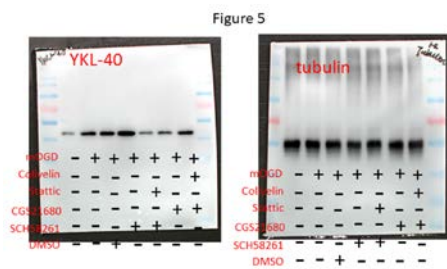
| | | | | | | | |
|-----------------------|---------|-------|-------------|-----------------|--------------------------|-----------------|----------------------------|
| original data | control | mOGD | mOGD + DMSO | mOGD + SCH58261 | CCH + SCH58261 + Stattic | mOGD + CGS21680 | CCH + CGS21680 + Colivelin |
| p-STAT3/STAT3 protein | 1.000 | 4.128 | 3.658 | 6.954 | 1.269 | 1.698 | 4.156 |
| (% of control) | 1.000 | 3.589 | 4.257 | 7.149 | 1.578 | 2.247 | 4.021 |
| | 1.000 | 3.985 | 3.876 | 6.583 | 1.148 | 2.348 | 4.112 |
| | 1.000 | 3.875 | 3.952 | 6.875 | 1.358 | 1.875 | 3.578 |
| | 1.000 | 4.235 | 4.024 | 7.049 | 1.284 | 1.994 | 3.895 |

| | | | | | | | | | |
|--|-------------|-------------|-------------|-----------------|---------------------------|-----------------|-----------------------------|---------------|---------|
| | control | mOGD | mOGD + DMSO | mOGD + SCH58261 | mOGD + SCH58261 + Stattic | mOGD + CGS21680 | mOGD + CGS21680 + Colivelin | | |
| Mean ± SD | 1.00 ± 0.00 | 3.96 ± 0.25 | 3.95 ± 0.22 | 6.92 ± 0.22 | 1.33 ± 0.16 | 2.03 ± 0.27 | 3.95 ± 0.23 | | |
| Normality: Shapiro-Wilk normality test (W) P | (1.00) 1.00 | (0.97) 0.84 | (0.99) 0.97 | (0.94) 0.67 | (0.93) 0.62 | (0.96) 0.81 | (0.89) 0.34 | | |
| Homogeneity of Variances: Levene Statistic | | | | | | | | F(6,28)=1.741 | p=0.148 |
| One way ANOVA | | | | | | | | F=479.731 | p=0.000 |

| | | | | |
|----------------------|------------------------------------|--------------------------|--------------------------------------|---------------------------------|
| Multiple Comparisons | control vs. mOGD | control vs. mOGD + DMSO | mOGD vs. mOGD + DMSO | mOGD vs. mOGD + SCH58261 |
| Tukey HSD | p=0.000 | p=0.000 | p=1.000 | p=0.000 |
| LSD | p=0.000 | p=0.000 | p=0.946 | p=0.000 |
| | mOGD vs. mOGD + SCH58261 + Stattic | mOGD vs. mOGD + CGS21680 | mOGD vs. mOGD + CGS21680 + Colivelin | mOGD + DMSO vs. mOGD + SCH58261 |

| | | | | |
|-----------|--|---------------------------------|--|---|
| Tukey HSD | p=0.000 | p=0.000 | p=1.000 | p=0.000 |
| LSD | p=0.000 | p=0.000 | p=0.940 | p=0.000 |
| | mOGD + DMSO vs. mOGD + SCH58261 + Stattic | mOGD + DMSO vs. mOGD + CGS21680 | mOGD + DMSO vs. mOGD + CGS21680+ Colivelin | mOGD + SCH58261 vs. mOGD + SCH58261 + Stattic |
| Tukey HSD | p=0.000 | p=0.000 | p=1.000 | p=0.000 |
| LSD | p=0.000 | p=0.000 | p=0.994 | p=0.000 |
| | mOGD + CGS21680 vs. mOGD + CGS21680+ Colivelin | | | |
| Tukey HSD | p=0.000 | | | |
| LSD | p=0.000 | | | |

Supplemental figure 33: The original data for the statistical analysis of YKL-40 protein in astrocytes *in vitro* (for figure 5B, 5D).



| original data | control | mOGD | mOGD + DMSO | mOGD + SCH58261 | CCH + SCH58261 + Stattic | mOGD + CGS21680 | CCH + CGS21680 + Colivelin |
|----------------|---------|-------|-------------|-----------------|--------------------------|-----------------|----------------------------|
| YKL-40 protein | 1.000 | 3.156 | 2.986 | 5.479 | 1.146 | 1.795 | 2.876 |
| (% of control) | 1.000 | 2.978 | 3.263 | 6.325 | 0.978 | 2.016 | 3.246 |
| | 1.000 | 3.258 | 3.028 | 5.896 | 1.245 | 2.148 | 3.148 |
| | 1.000 | 3.025 | 3.147 | 5.741 | 1.345 | 1.986 | 3.058 |
| | 1.000 | 2.879 | 2.857 | 5.995 | 1.187 | 1.853 | 3.369 |

| | control | mOGD | mOGD + DMSO | mOGD + SCH58261 | mOGD + SCH58261 + Stattic | mOGD + CGS21680 | mOGD + CGS21680 + Colivelin | | |
|--|-------------|-------------|-------------|-----------------|---------------------------|-----------------|-----------------------------|---------------|---------|
| Mean ± SD | 1.00 ± 0.00 | 3.06 ± 0.15 | 3.06 ± 0.16 | 5.89 ± 0.31 | 1.18 ± 0.14 | 1.96 ± 0.14 | 3.14 ± 0.19 | | |
| Normality: Shapiro-Wilk normality test (W) P | (1.00) 1.00 | (0.98) 0.91 | (0.99) 0.97 | (0.99) 0.99 | (0.98) 0.92 | (0.94) 0.84 | (0.99) 0.99 | | |
| Homogeneity of Variances: Levene Statistic | | | | | | | | F(6,28)=2.113 | p=0.083 |
| One way ANOVA | | | | | | | | F=438.915 | p=0.000 |

| Multiple Comparisons | control vs. mOGD | control vs. mOGD + DMSO | mOGD vs. mOGD + DMSO | mOGD vs. mOGD + SCH58261 |
|----------------------|------------------------------------|---------------------------------|-------------------------------------|---------------------------------------|
| Tukey HSD | p=0.000 | p=0.000 | p=1.000 | p=0.000 |
| LSD | p=0.000 | p=0.000 | p=0.979 | p=0.000 |
| | mOGD vs. mOGD + SCH58261 + Stattic | mOGD vs. mOGD + CGS21680 | mOGD vs. mOGD + CGS21680+ Colivelin | mOGD + DMSO vs. mOGD + SCH58261 |
| Tukey HSD | p=0.000 | p=0.000 | p=0.990 | p=0.000 |
| LSD | p=0.000 | p=0.000 | p=0.477 | p=0.000 |
| | mOGD + DMSO vs. mOGD + SCH58261 + | mOGD + DMSO vs. mOGD + CGS21680 | mOGD + DMSO vs. mOGD + CGS21680+ | mOGD + SCH58261 vs. mOGD + SCH58261 + |

| | | | | |
|-----------|--|---------|-----------|---------|
| | Stattic | | Colivelin | Stattic |
| Tukey HSD | p=0.000 | p=0.000 | p=0.988 | p=0.000 |
| LSD | p=0.000 | p=0.000 | p=0.461 | p=0.000 |
| | mOGD + CGS21680 vs. mOGD + CGS21680+ Colivelin | | | |
| Tukey HSD | p=0.000 | | | |
| LSD | p=0.000 | | | |

Supplemental figure 34: The original data for the statistical analysis of *STAT3* mRNA in astrocytes *in vitro* (for figure 5E).

| original data | control | mOGD | mOGD + DMSO | mOGD + SCH58261 | CCH + SCH58261 + Stattic | mOGD + CGS21680 | CCH+ CGS21680+ Colivelin |
|-------------------|---------|-------|-------------|-----------------|--------------------------|-----------------|--------------------------|
| <i>STAT3</i> mRNA | 1.00 | 7.162 | 7.146 | 10.687 | 3.758 | 4.479 | 6.495 |
| (% of control) | 1.00 | 5.495 | 6.593 | 9.356 | 2.697 | 4.587 | 9.556 |
| | 1.00 | 9.774 | 9.685 | 11.458 | 2.489 | 5.147 | 8.675 |
| | 1.00 | 8.698 | 7.224 | 12.447 | 3.227 | 3.564 | 7.482 |
| | 1.00 | 8.247 | 8.762 | 9.578 | 3.048 | 5.228 | 8.357 |

| | control | mOGD | mOGD + DMSO | mOGD + SCH58261 | mOGD + SCH58261 + Stattic | mOGD + CGS21680 | mOGD + CGS21680 + Colivelin | | |
|--|-------------|-------------|-------------|-----------------|---------------------------|-----------------|-----------------------------|---------------|---------|
| Mean ± SD | 1.00 ± 0.00 | 7.88 ± 1.63 | 7.88 ± 1.29 | 10.71 ± 1.29 | 3.04 ± 0.49 | 4.60 ± 0.67 | 8.11 ± 1.17 | | |
| Normality: Shapiro-Wilk normality test (W) P | (1.00) 1.00 | (0.98) 0.91 | (0.90) 0.40 | (0.94) 0.67 | (0.97) 0.88 | (0.90) 0.42 | (0.99) 0.97 | | |
| Homogeneity of Variances: Levene Statistic | | | | | | | | F(6,28)=3.542 | p=0.010 |
| One way ANOVA | | | | | | | | F=50.144 | p=0.000 |

| Multiple Comparisons | control vs. mOGD | control vs. mOGD + DMSO | mOGD vs. mOGD + DMSO | mOGD vs. mOGD + SCH58261 |
|----------------------|--|---------------------------------|--|---|
| Tukey HSD | p=0.000 | p=0.000 | p=1.000 | p=0.004 |
| LSD | p=0.000 | p=0.000 | p=0.992 | p=0.000 |
| | mOGD vs. mOGD + SCH58261 + Stattic | mOGD vs. mOGD + CGS21680 | mOGD vs. mOGD + CGS21680+ Colivelin | mOGD + DMSO vs. mOGD + SCH58261 |
| Tukey HSD | p=0.000 | p=0.000 | p=1.000 | p=0.004 |
| LSD | p=0.000 | p=0.000 | p=0.728 | p=0.000 |
| | mOGD + DMSO vs. mOGD + SCH58261 + Stattic | mOGD + DMSO vs. mOGD + CGS21680 | mOGD + DMSO vs. mOGD + CGS21680+ Colivelin | mOGD + SCH58261 vs. mOGD + SCH58261 + Stattic |
| Tukey HSD | p=0.000 | p=0.001 | p=1.000 | p=0.000 |
| LSD | p=0.000 | p=0.000 | p=0.461 | p=0.000 |
| | mOGD + CGS21680 vs. mOGD + CGS21680+ Colivelin | | | |
| Tukey HSD | p=0.000 | | | |
| LSD | p=0.000 | | | |

Supplemental figure 35: The original data for the statistical analysis of *YKL-40* mRNA in astrocytes *in vitro* (for figure 5F).

| original data | control | mOGD | mOGD + DMSO | mOGD + SCH58261 | CCH + SCH58261 | mOGD + CGS21680 | CCH+ CGS21680+ |
|---------------|---------|------|-------------|-----------------|----------------|-----------------|----------------|
|---------------|---------|------|-------------|-----------------|----------------|-----------------|----------------|

| | | | | | | | |
|----------------|------|--------|--------|--------|-----------|-------|-----------|
| | | | | | + Stattic | | Colivelin |
| YKL-40 mRNA | 1.00 | 10.268 | 8.675 | 14.935 | 3.596 | 6.482 | 9.563 |
| (% of control) | 1.00 | 9.367 | 11.468 | 12.745 | 5.247 | 4.915 | 7.675 |
| | 1.00 | 12.475 | 10.576 | 15.375 | 4.578 | 5.742 | 10.475 |
| | 1.00 | 11.885 | 9.346 | 10.592 | 5.358 | 6.143 | 8.546 |
| | 1.00 | 8.942 | 9.462 | 14.579 | 5.247 | 5.813 | 9.887 |

| | | | | | | | | | |
|--|-------------|--------------|-------------|-----------------|---------------------------|-----------------|-----------------------------|---------------|---------|
| | control | mOGD | mOGD + DMSO | mOGD + SCH58261 | mOGD + SCH58261 + Stattic | mOGD + CGS21680 | mOGD + CGS21680 + Colivelin | | |
| Mean ± SD | 1.00 ± 0.00 | 10.59 ± 1.54 | 9.91 ± 1.11 | 13.65 ± 1.98 | 4.81 ± 0.74 | 5.82 ± 0.58 | 9.23 ± 1.12 | | |
| Normality: Shapiro-Wilk normality test (W) P | (1.00) 1.00 | (0.92) 0.50 | (0.94) 0.69 | (0.88) 0.30 | (0.80) 0.09 | (0.95) 0.72 | (0.96) 0.80 | | |
| Homogeneity of Variances: Levene Statistic | | | | | | | | F(6,28)=5.222 | p=0.001 |
| One way ANOVA | | | | | | | | F=64.868 | p=0.000 |

| | | | | |
|----------------------|---|---------------------------------|---|---|
| Multiple Comparisons | control vs. mOGD | control vs. mOGD + DMSO | mOGD vs. mOGD + DMSO | mOGD vs. mOGD + SCH58261 |
| Tukey HSD | p=0.000 | p=0.000 | p=0.967 | p=0.005 |
| LSD | p=0.000 | p=0.000 | p=0.367 | p=0.000 |
| | mOGD vs. mOGD + SCH58261 + Stattic | mOGD vs. mOGD + CGS21680 | mOGD vs. mOGD + CGS21680 + Colivelin | mOGD + DMSO vs. mOGD + SCH58261 |
| Tukey HSD | p=0.000 | p=0.000 | p=0.542 | p=0.000 |
| LSD | p=0.000 | p=0.000 | p=0.078 | p=0.000 |
| | mOGD + DMSO vs. mOGD + SCH58261 + Stattic | mOGD + DMSO vs. mOGD + CGS21680 | mOGD + DMSO vs. mOGD + CGS21680 + Colivelin | mOGD + SCH58261 vs. mOGD + SCH58261 + Stattic |
| Tukey HSD | p=0.000 | p=0.000 | p=0.968 | p=0.000 |
| LSD | p=0.000 | p=0.000 | p=0.371 | p=0.000 |
| | mOGD + CGS21680 vs. mOGD + CGS21680 + Colivelin | | | |
| Tukey HSD | p=0.001 | | | |
| LSD | p=0.000 | | | |

Supplemental figure 36: The original data for the statistical analysis of inflammatory cytokines IL-1 β in the supernatant of primary astrocytes cultured with different treatments *in vitro* (for figure 6A).

| | | | | | | | |
|----------------|---------|--------|-------------|-----------------|--------------------------|-----------------|----------------------------|
| original data | control | mOGD | mOGD + DMSO | mOGD + SCH58261 | CCH + SCH58261 + Stattic | mOGD + CGS21680 | CCH + CGS21680 + Colivelin |
| IL-1 β | 3.697 | 46.857 | 44.687 | 64.395 | 21.957 | 14.683 | 54.716 |
| (% of control) | 4.258 | 35.697 | 45.234 | 57.149 | 18.647 | 24.715 | 42.587 |
| | 2.371 | 42.597 | 41.597 | 60.789 | 25.749 | 22.748 | 58.346 |
| | 2.987 | 51.975 | 48.215 | 68.375 | 22.385 | 18.357 | 42.687 |
| | 3.024 | 58.261 | 42.475 | 52.317 | 17.685 | 15.674 | 39.586 |

| | | | | | | | | | |
|-----------|---------|---------|-------------|-----------------|---------------------------|-----------------|-----------------------------|--|--|
| | control | mOGD | mOGD + DMSO | mOGD + SCH58261 | mOGD + SCH58261 + Stattic | mOGD + CGS21680 | mOGD + CGS21680 + Colivelin | | |
| Mean ± SD | 3.27 ± | 47.08 ± | 44.44 ± | 60.61 ± | 21.28 ± | 19.24 ± | 47.58 ± | | |

| | | | | | | | | | |
|--|-------------|-------------|-------------|-------------|-------------|-------------|-------------|---------------|---------|
| | 0.73 | 8.64 | 2.59 | 6.23 | 3.22 | 4.37 | 8.36 | | |
| Normality: Shapiro-Wilk normality test (W) P | (0.97) 0.84 | (0.99) 0.99 | (0.95) 0.77 | (0.99) 0.99 | (0.95) 0.70 | (0.92) 0.51 | (0.85) 0.19 | | |
| Homogeneity of Variances: Levene Statistic | | | | | | | | F(6,28)=4.229 | p=0.004 |
| One way ANOVA | | | | | | | | F=66.026 | p=0.000 |

| | | | | |
|----------------------|--|---------------------------------|--|---|
| Multiple Comparisons | control vs. mOGD | control vs. mOGD + DMSO | mOGD vs. mOGD + DMSO | mOGD vs. mOGD + SCH58261 |
| Tukey HSD | p=0.000 | p=0.000 | p=0.988 | p=0.011 |
| LSD | p=0.000 | p=0.000 | p=0.464 | p=0.001 |
| | mOGD vs. mOGD + SCH58261 + Stattic | mOGD vs. mOGD + CGS21680 | mOGD vs. mOGD + CGS21680+ Colivelin | mOGD + DMSO vs. mOGD + SCH58261 |
| Tukey HSD | p=0.000 | p=0.000 | p=1.000 | p=0.002 |
| LSD | p=0.000 | p=0.000 | p=0.887 | p=0.000 |
| | mOGD + DMSO vs. mOGD + SCH58261 + Stattic | mOGD + DMSO vs. mOGD + CGS21680 | mOGD + DMSO vs. mOGD + CGS21680+ Colivelin | mOGD + SCH58261 vs. mOGD + SCH58261 + Stattic |
| Tukey HSD | p=0.000 | p=0.000 | p=0.972 | p=0.000 |
| LSD | p=0.000 | p=0.000 | p=0.383 | p=0.000 |
| | mOGD + CGS21680 vs. mOGD + CGS21680+ Colivelin | | | |
| Tukey HSD | p=0.000 | | | |
| LSD | p=0.000 | | | |

Supplemental figure 37: The original data for the statistical analysis of inflammatory cytokines TNF- α in the supernatant of primary astrocytes cultured with different treatments *in vitro* (for figure 6B).

| | | | | | | | |
|----------------|---------|--------|-------------|-----------------|--------------------------|-----------------|--------------------------|
| original data | control | mOGD | mOGD + DMSO | mOGD + SCH58261 | CCH + SCH58261 + Stattic | mOGD + CGS21680 | CCH+ CGS21680+ Colivelin |
| TNF- α | 5.697 | 72.587 | 55.214 | 87.246 | 34.879 | 36.251 | 54.156 |
| (% of control) | 4.156 | 60.154 | 52.156 | 74.663 | 45.627 | 30.459 | 65.987 |
| | 3.558 | 58.746 | 69.563 | 82.965 | 39.518 | 45.362 | 60.536 |
| | 2.597 | 70.524 | 57.452 | 79.453 | 27.463 | 31.598 | 71.486 |
| | 5.694 | 69.356 | 62.593 | 85.621 | 31.665 | 28.457 | 75.952 |

| | | | | | | | | | |
|--|-----------------|------------------|------------------|------------------|---------------------------|------------------|-----------------------------|---------------|---------|
| | control | mOGD | mOGD + DMSO | mOGD + SCH58261 | mOGD + SCH58261 + Stattic | mOGD + CGS21680 | mOGD + CGS21680 + Colivelin | | |
| Mean \pm SD | 4.34 \pm 1.36 | 66.27 \pm 6.35 | 59.40 \pm 6.84 | 81.99 \pm 5.05 | 35.83 \pm 7.03 | 34.43 \pm 6.75 | 65.62 \pm 8.64 | | |
| Normality: Shapiro-Wilk normality test (W) P | (0.90) 0.42 | (0.85) 0.19 | (0.95) 0.75 | (0.95) 0.76 | (0.99) 0.97 | (0.88) 0.29 | (0.98) 0.95 | | |
| Homogeneity of Variances: Levene Statistic | | | | | | | | F(6,28)=1.664 | p=0.167 |
| One way ANOVA | | | | | | | | F=85.144 | p=0.000 |

| | | | | |
|----------------------|------------------|-------------------------|----------------------|--------------------------|
| Multiple Comparisons | control vs. mOGD | control vs. mOGD + DMSO | mOGD vs. mOGD + DMSO | mOGD vs. mOGD + SCH58261 |
| Tukey HSD | p=0.000 | p=0.000 | p=0.617 | p=0.009 |
| LSD | p=0.000 | p=0.000 | p=0.099 | p=0.001 |
| | mOGD vs. mOGD + | mOGD vs. mOGD + | mOGD vs. mOGD + | mOGD + DMSO vs. |

| | | | | |
|-----------|--|---------------------------------|--|---|
| | SCH58261 + Stattic | CGS21680 | CGS21680+ Colivelin | mOGD + SCH58261 |
| Tukey HSD | p=0.000 | p=0.000 | p=1.000 | p=0.000 |
| LSD | p=0.000 | p=0.000 | p=0.873 | p=0.000 |
| | mOGD + DMSO vs. mOGD + SCH58261 + Stattic | mOGD + DMSO vs. mOGD + CGS21680 | mOGD + DMSO vs. mOGD + CGS21680+ Colivelin | mOGD + SCH58261 vs. mOGD + SCH58261 + Stattic |
| Tukey HSD | p=0.000 | p=0.000 | p=0.716 | p=0.000 |
| LSD | p=0.000 | p=0.000 | p=0.133 | p=0.000 |
| | mOGD + CGS21680 vs. mOGD + CGS21680+ Colivelin | | | |
| Tukey HSD | p=0.000 | | | |
| LSD | p=0.000 | | | |

Supplemental figure 38: The original data for the statistical analysis of inflammatory cytokines IL-6 in the supernatant of primary astrocytes cultured with different treatments *in vitro* (for figure 6C).

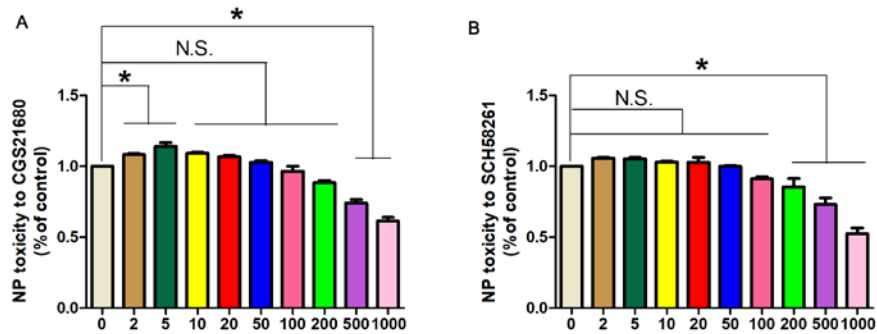
| original data | control | mOGD | mOGD + DMSO | mOGD + SCH58261 | CCH + SCH58261 + Stattic | mOGD + CGS21680 | CCH+ CGS21680+ Colivelin |
|----------------|---------|--------|-------------|-----------------|--------------------------|-----------------|--------------------------|
| IL-6 | 0.648 | 32.574 | 27.541 | 47.695 | 19.365 | 14.362 | 36.596 |
| (% of control) | 2.358 | 29.695 | 35.624 | 53.562 | 22.157 | 15.986 | 30.475 |
| | 1.467 | 38.167 | 30.996 | 38.561 | 14.539 | 21.369 | 32.165 |
| | 2.018 | 33.584 | 24.756 | 40.963 | 23.687 | 19.475 | 41.578 |
| | 3.629 | 30.269 | 29.658 | 41.869 | 25.264 | 20.458 | 29.547 |

| | control | mOGD | mOGD + DMSO | mOGD + SCH58261 | mOGD + SCH58261 + Stattic | mOGD + CGS21680 | mOGD + CGS21680 + Colivelin | | |
|--|-------------|--------------|--------------|-----------------|---------------------------|-----------------|-----------------------------|---------------|---------|
| Mean ± SD | 2.02 ± 1.11 | 32.86 ± 3.37 | 29.72 ± 4.06 | 44.53 ± 6.06 | 21.00 ± 4.22 | 18.33 ± 3.01 | 34.07 ± 4.99 | | |
| Normality: Shapiro-Wilk normality test (W) P | (0.99) 0.97 | (0.91) 0.46 | (0.99) 0.96 | (0.91) 0.50 | (0.94) 0.65 | (0.91) 0.45 | (0.90) 0.41 | | |
| Homogeneity of Variances: Levene Statistic | | | | | | | | F(6,28)=2.089 | p=0.087 |
| One way ANOVA | | | | | | | | F=55.935 | p=0.000 |

| Multiple Comparisons | control vs. mOGD | control vs. mOGD + DMSO | mOGD vs. mOGD + DMSO | mOGD vs. mOGD + SCH58261 |
|----------------------|--|---------------------------------|--|---|
| Tukey HSD | p=0.000 | p=0.000 | p=0.884 | p=0.002 |
| LSD | p=0.000 | p=0.000 | p=0.236 | p=0.000 |
| | mOGD vs. mOGD + SCH58261 + Stattic | mOGD vs. mOGD + CGS21680 | mOGD vs. mOGD + CGS21680+ Colivelin | mOGD + DMSO vs. mOGD + SCH58261 |
| Tukey HSD | p=0.002 | p=0.000 | p=0.999 | p=0.000 |
| LSD | p=0.000 | p=0.000 | p=0.643 | p=0.000 |
| | mOGD + DMSO vs. mOGD + SCH58261 + Stattic | mOGD + DMSO vs. mOGD + CGS21680 | mOGD + DMSO vs. mOGD + CGS21680+ Colivelin | mOGD + SCH58261 vs. mOGD + SCH58261 + Stattic |
| Tukey HSD | p=0.032 | p=0.002 | p=0.634 | p=0.000 |
| LSD | p=0.002 | p=0.000 | p=0.104 | p=0.000 |
| | mOGD + CGS21680 vs. mOGD + CGS21680+ Colivelin | | | |

| | | | | |
|-----------|---------|--|--|--|
| Tukey HSD | p=0.000 | | | |
| LSD | p=0.000 | | | |

Supplemental figure 39: *In vitro* cytotoxicity evaluation of CGS21680 and SCH58261 in astrocyte. Cell Counting Kit-8 (CCK-8) was used to assess cytotoxicity of CGS21680 (A) and SCH58261 (B) in primary astrocyte. Cells were cultured in 96-well plates (1×10^4 cells per well) in 100 μ L of DMEM containing 10% FBS for 24 h. Then cells were treated with various doses of CGS21680 and SCH58261 (from 0, 2, 5, 10, 20, 50, 100, 200, 500, to 1000 nM /mL) for another 24 h. Cell viability was quantified by CCK-8 assay. Data are mean \pm SD (n = 3).



Supplemental figure 40: The original data for the statistical analysis of cell cytotoxicity for CGS21680 in primary astrocytes (for Supplemental figure 39 A).

| | | | | | | | | | | |
|----------------|-------|-------|-------|-------|-------|-------|-------|-------|-------|-------|
| original data | 0 | 2 | 5 | 10 | 20 | 50 | 100 | 200 | 500 | 1000 |
| (% of control) | 1.000 | 1.112 | 1.142 | 1.075 | 1.051 | 1.037 | 0.931 | 0.911 | 0.777 | 0.646 |
| | 1.000 | 1.105 | 1.092 | 1.098 | 1.067 | 1.003 | 1.035 | 0.855 | 0.751 | 0.567 |
| | 1.000 | 1.099 | 1.187 | 1.104 | 1.083 | 1.045 | 0.931 | 0.888 | 0.693 | 0.632 |

| | | | | | | | | | | | | |
|--|-----------------|-----------------|-----------------|-----------------|-----------------|-----------------|-----------------|-----------------|-----------------|-----------------|----------------|---------|
| | 0 | 2 | 5 | 10 | 20 | 50 | 100 | 200 | 500 | 1000 | | |
| Mean \pm SD | 1.00 \pm 1.00 | 1.11 \pm 0.01 | 1.14 \pm 0.05 | 1.09 \pm 0.15 | 1.07 \pm 0.16 | 1.03 \pm 0.02 | 0.97 \pm 0.06 | 0.88 \pm 0.03 | 0.74 \pm 0.04 | 0.61 \pm 0.04 | | |
| Normality: Shapiro-Wilk normality test (W) P | (1.00) 1.00 | (0.99) 0.92 | (0.99) 0.94 | (0.90) 0.38 | (1.00) 1.00 | (0.89) 0.34 | (0.90) 0.39 | (0.99) 0.80 | (0.95) 0.59 | (0.88) 0.32 | | |
| Homogeneity of Variances: Levene Statistic | | | | | | | | | | | F(9,20) =3.027 | p=0.019 |
| One way ANOVA | | | | | | | | | | | F=77.265 | p=0.000 |

| | | | | | |
|----------------------|-----------|-----------|-----------|------------|----------|
| Multiple Comparisons | 0 vs.2 | 0 vs. 5 | 0 vs. 10 | 0 vs. 20 | 0 vs. 50 |
| Tukey HSD | p=0.027 | p=0.002 | p=0.071 | p=0.351 | p=0.987 |
| LSD | p=0.001 | p=0.000 | p=0.003 | p=0.024 | p=0.317 |
| | 0 vs. 100 | 0 vs. 200 | 0 vs. 500 | 0 vs. 1000 | |
| Tukey HSD | p=0.954 | p=0.012 | p=0.000 | p=0.000 | |
| LSD | p=0.226 | p=0.000 | p=0.000 | p=0.000 | |

Supplemental figure 41: The original data for the statistical analysis of cell cytotoxicity for SCH58261 in primary astrocytes (for Supplemental figure 39 B).

| | | | | | | | | | | |
|----------|---|---|---|----|----|----|-----|-----|-----|------|
| original | 0 | 2 | 5 | 10 | 20 | 50 | 100 | 200 | 500 | 1000 |
|----------|---|---|---|----|----|----|-----|-----|-----|------|

| | | | | | | | | | | |
|----------------|-------|-------|-------|-------|-------|-------|-------|-------|-------|-------|
| data | | | | | | | | | | |
| (% of control) | 1.000 | 1.065 | 1.070 | 1.016 | 1.094 | 0.998 | 0.880 | 0.932 | 0.759 | 0.448 |
| | 1.000 | 1.060 | 1.041 | 1.045 | 0.980 | 1.011 | 0.926 | 0.740 | 0.793 | 0.579 |
| | 1.000 | 1.050 | 1.047 | 1.027 | 1.012 | 0.989 | 0.927 | 0.891 | 0.639 | 0.547 |

| | | | | | | | | | | | | |
|--|----------------|----------------|----------------|----------------|----------------|----------------|----------------|----------------|----------------|----------------|-------------------|---------|
| | 0 | 2 | 5 | 10 | 20 | 50 | 100 | 200 | 500 | 1000 | | |
| Mean ± SD | 1.00 ± 0.00 | 1.06 ± 0.01 | 1.05 ± 0.02 | 1.03 ± 0.01 | 1.03 ± 0.06 | 1.00 ± 0.01 | 0.91 ± 0.03 | 0.85 ± 0.10 | 0.73 ± 0.08 | 0.52 ± 0.07 | | |
| Normality: Shapiro-Wilk normality test (W) P | (1.00) 1.00 | (0.96) 0.64 | (0.90) 0.38 | (0.98) 0.74 | (0.94) 0.53 | (0.99) 0.80 | (0.90) 0.40 | (0.90) 0.39 | (0.91) 0.40 | (0.92) 0.45 | | |
| Homogeneity of Variances: Levene Statistic | | | | | | | | | | | F(9,20) =5.328 | p=0.051 |
| One way ANOVA | | | | | | | | | | | F=34.3 31 | p=0.000 |

| | | | | | |
|----------------------|-----------|-----------|-----------|------------|----------|
| Multiple Comparisons | 0 vs.2 | 0 vs. 5 | 0 vs. 10 | 0 vs. 20 | 0 vs. 50 |
| Tukey HSD | p=0.917 | p=0.952 | p=0.999 | p=0.999 | p=1.000 |
| LSD | p=0.180 | p=0.223 | p=0.489 | p=0.502 | p=0.992 |
| | 0 vs. 100 | 0 vs. 200 | 0 vs. 500 | 0 vs. 1000 | |
| Tukey HSD | p=0.532 | p=0.057 | p=0.000 | p=0.000 | |
| LSD | p=0.046 | p=0.002 | p=0.000 | p=0.000 | |