

**Mechanical unloading aggravates bone destruction and tumor expansion in myeloma**

Kotaro Tanimoto,<sup>1</sup> Masahiro Hiasa,<sup>1</sup> Hirofumi Tenshin,<sup>1</sup> Junpei Teramachi,<sup>2</sup> Asuka Oda,<sup>3</sup> Takeshi Harada,<sup>3</sup> Yoshiki Higa,<sup>1</sup> Kimiko Sogabe,<sup>3</sup> Masahiro Oura,<sup>3</sup> Ryohei Sumitani,<sup>3</sup> Tomoyo Hara,<sup>3</sup> Itsuro Endo,<sup>4</sup> Toshio Matsumoto,<sup>5</sup> Eiji Tanaka,<sup>1</sup> and Masahiro Abe<sup>3</sup>

<sup>1</sup>Department of Orthodontics and Dentofacial Orthopedics, Tokushima University Graduate School of Biomedical Sciences, Tokushima; <sup>2</sup>Department of Oral Function and Anatomy, Okayama University Graduate School of Medicine, Dentistry and Pharmaceutical Science, Okayama; <sup>3</sup>Department of Hematology, Endocrinology and Metabolism, Tokushima University Graduate School of Biomedical Sciences, Tokushima; <sup>4</sup>Department of Bioregulatory Sciences, Tokushima University Graduate School of Medical Sciences, Tokushima and <sup>5</sup>Fujii Memorial Institute of Medical Sciences, Tokushima University, Tokushima, Japan

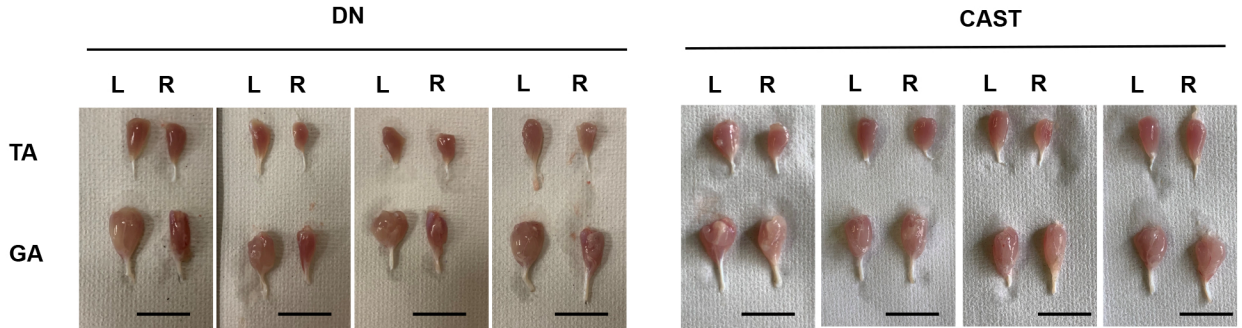
Correspondence:

MASAHIRO ABE - [masabe@tokushima-u.ac.jp](mailto:masabe@tokushima-u.ac.jp)

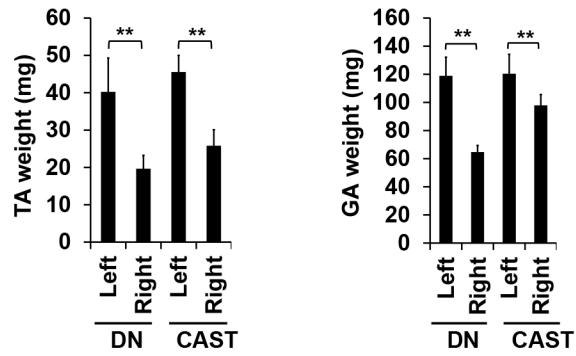
MASAHIRO HIASA - [mhiasa@tokushima-u.ac.jp](mailto:mhiasa@tokushima-u.ac.jp)

doi:10.3324/haematol.2021.278295

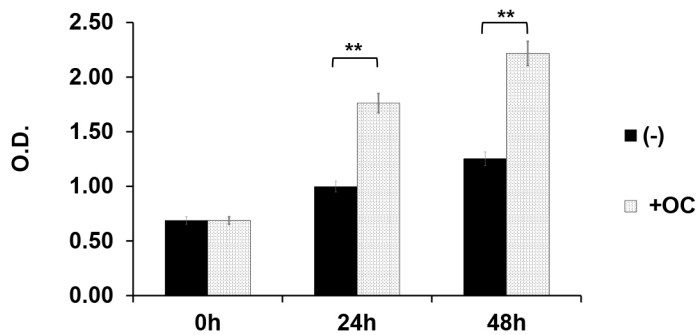
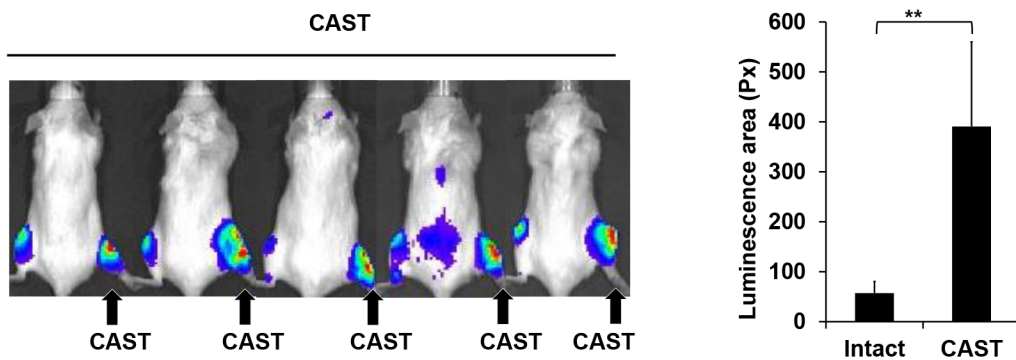
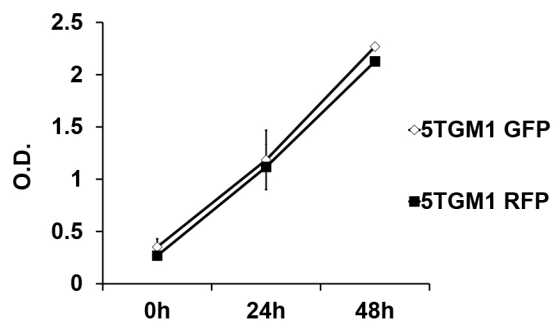
**A**

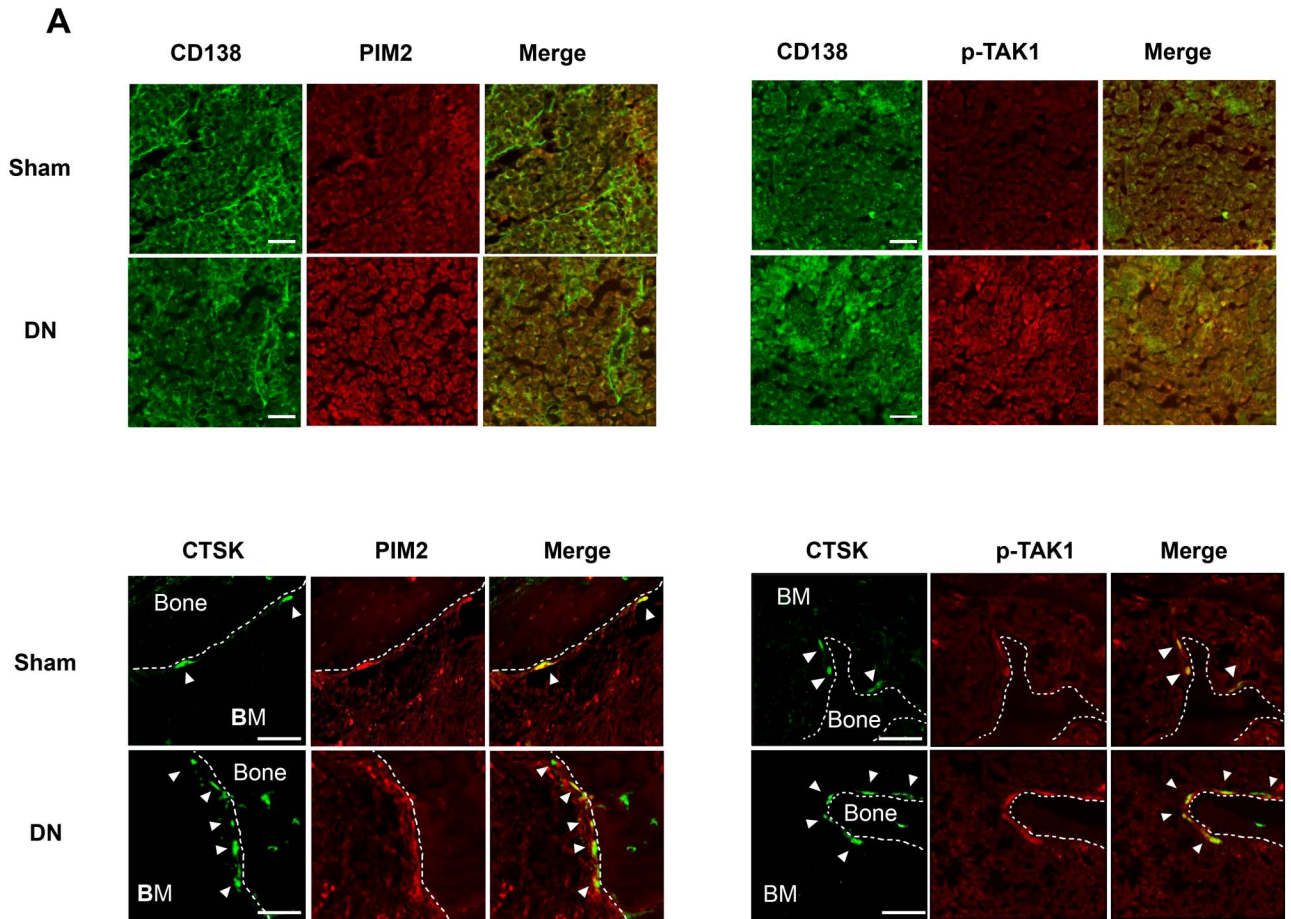


**B**

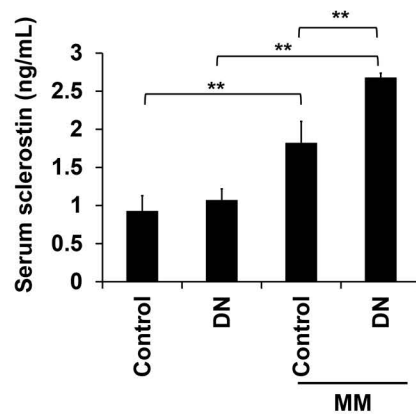


**Supplementary Figure 1**

**A****B****C****Supplementary Figure 2**



**B**



**Supplementary Figure 3**