

Supplementary Material

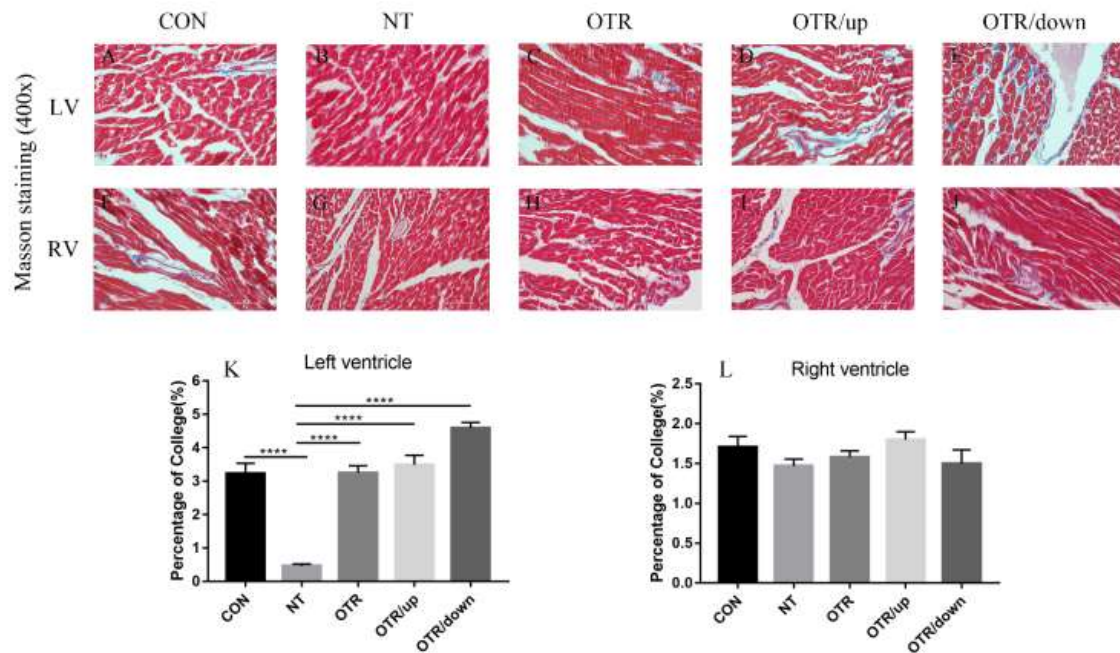


Figure S1: Representative images with the tissue sections with the Masson staining (400x) of left ventricular myocardium (A–E) and right ventricular myocardium (F–J) from five experimental groups. Scale bars represent 50 μ m. Quantitative analysis of Masson staining fibrosis results of left ventricular myocardium in five experimental groups (K). Quantitative analysis of Masson staining fibrosis results of right ventricular myocardium in five experimental groups (L). The data represent the means \pm SEMs. **** statistically significant ($P < 0.0001$).