

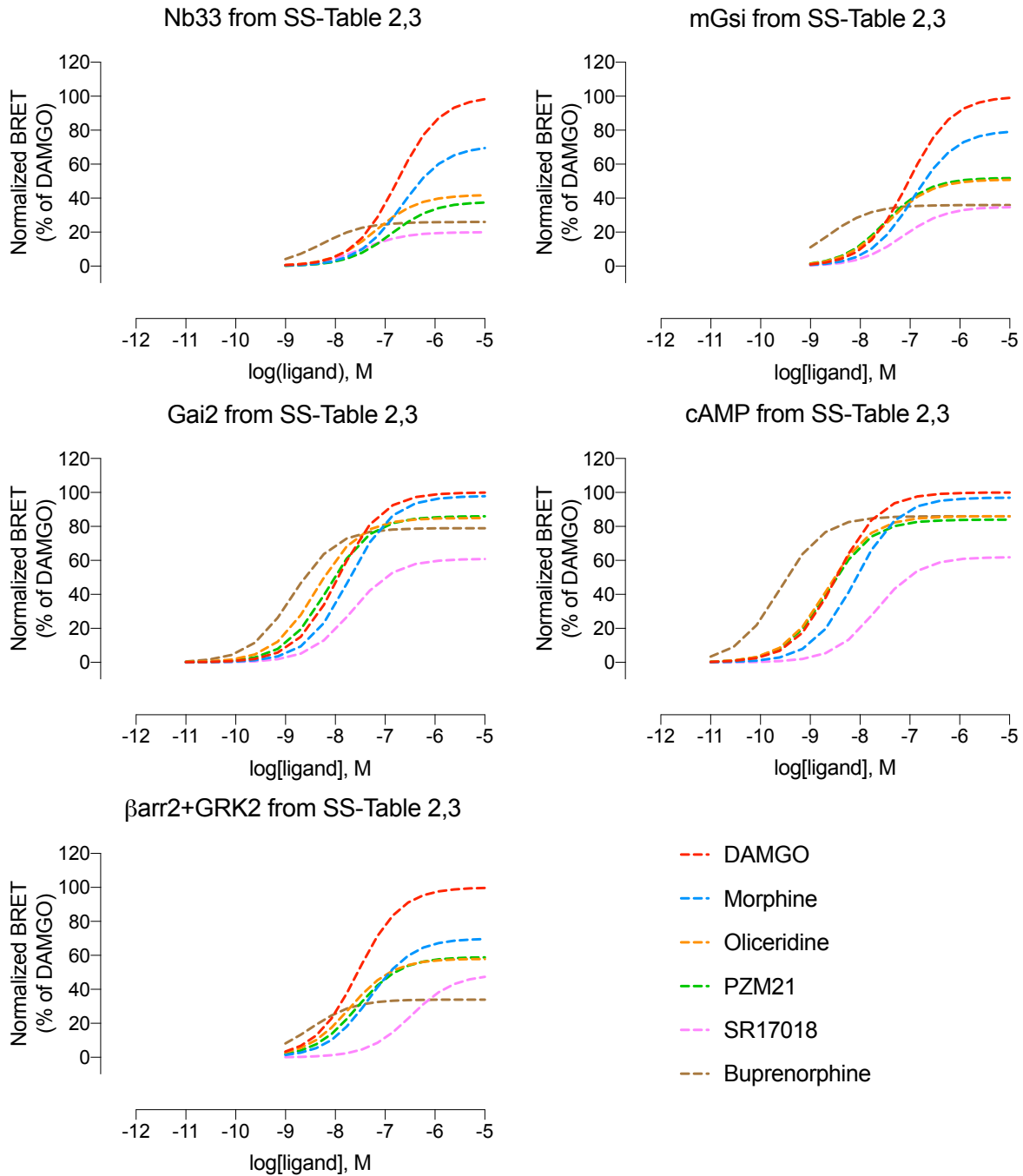
Low intrinsic efficacy alone cannot explain the improved side effect profiles of new opioid agonists

Edward L. Stahl and Laura M. Bohn

Department of Molecular Medicine, The Scripps Research Institute, 130 Scripps Way, Jupiter, FL, 33458

estahl@scripps.edu; lbohn@scripps.edu

Supplemental Figure 1. Simulation of curves from EC_{50} and E_{max} values.



Supplemental Figure 1. Simulated concentration response curves generated from SS-Table 2 and SS-Table 3 parameters using 3 parameter nonlinear regression, GraphPad Prism 9.