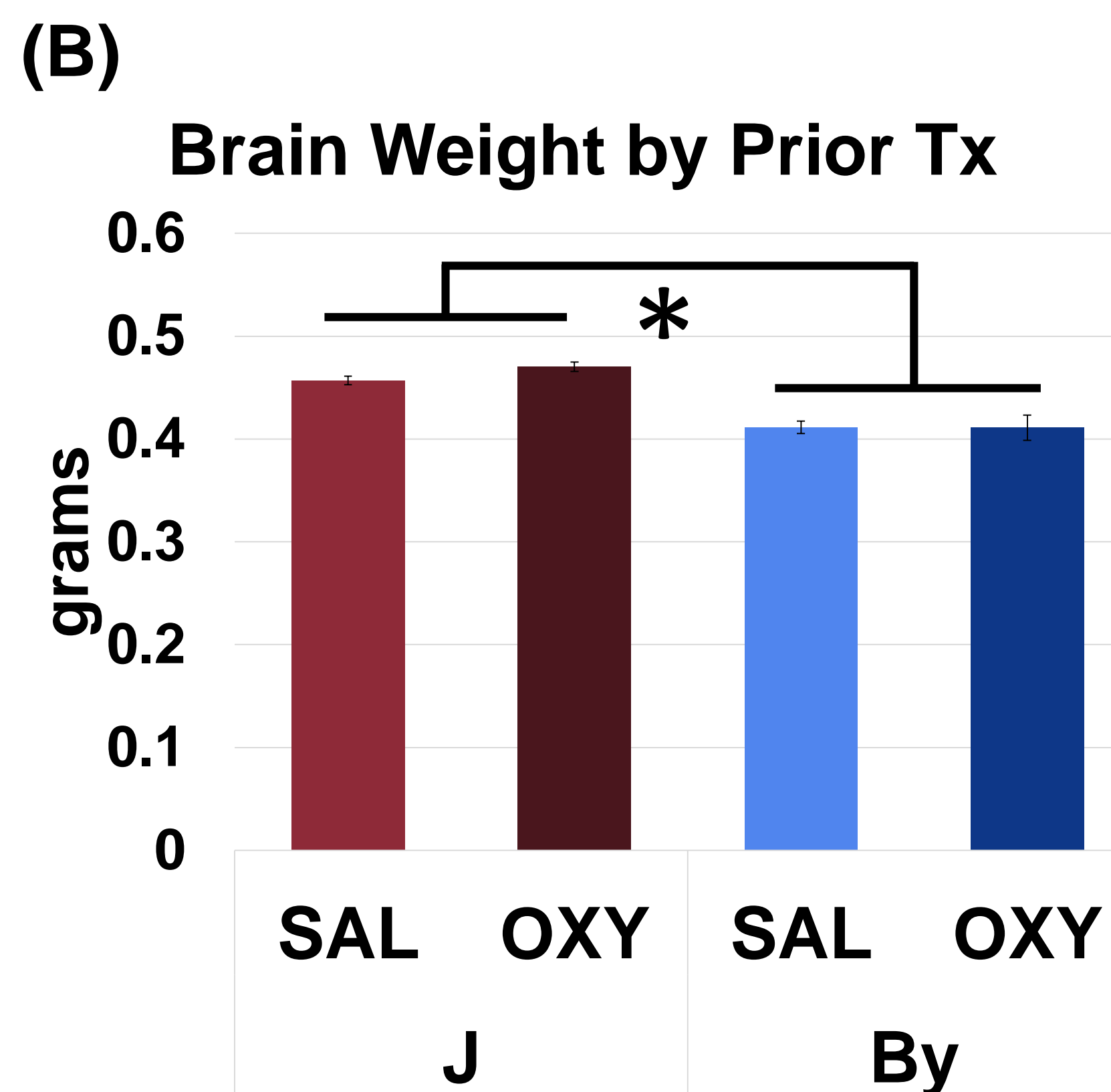
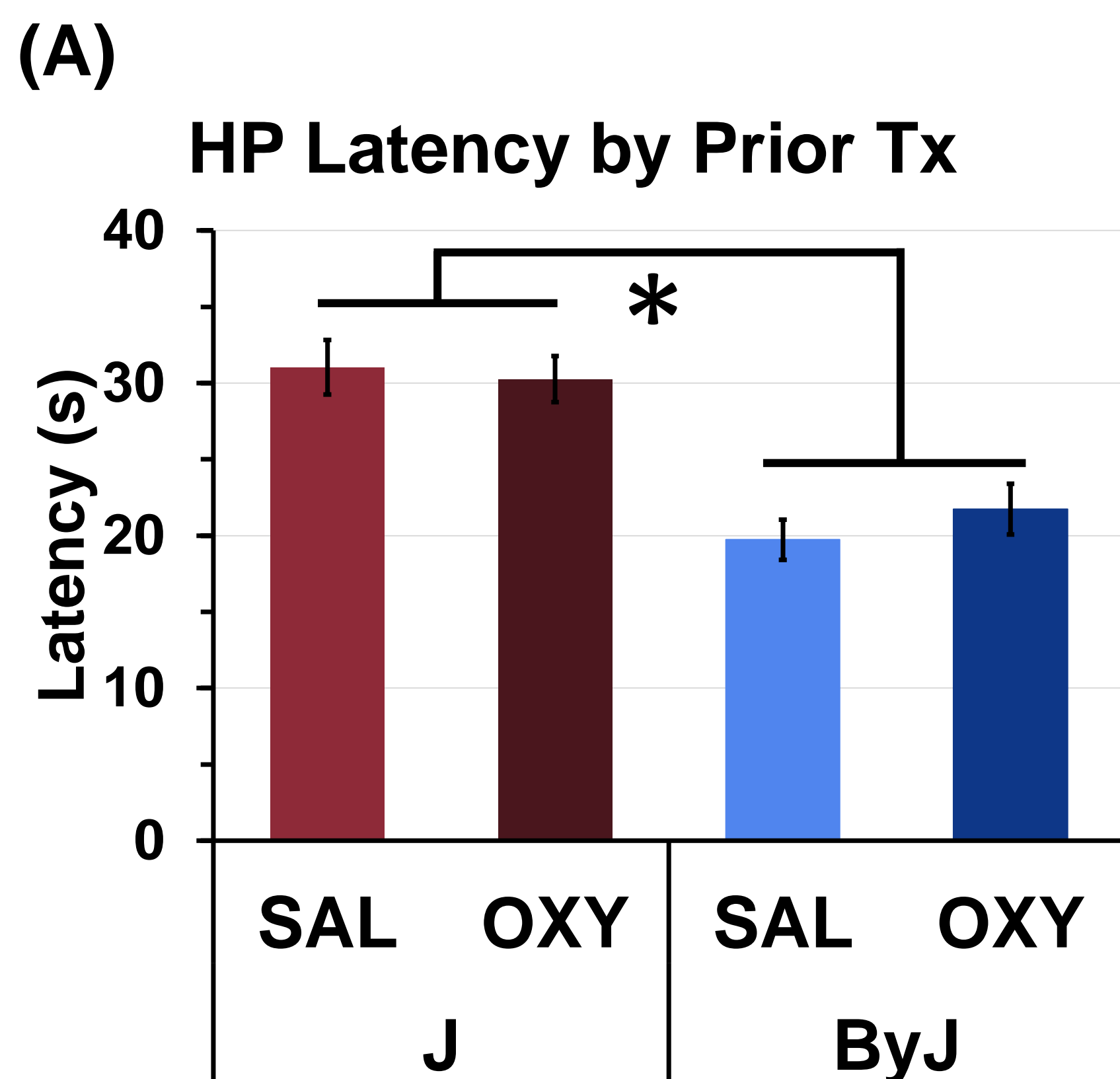


Genetic basis of thermal nociceptive sensitivity and brain weight in a BALB/c reduced complexity cross

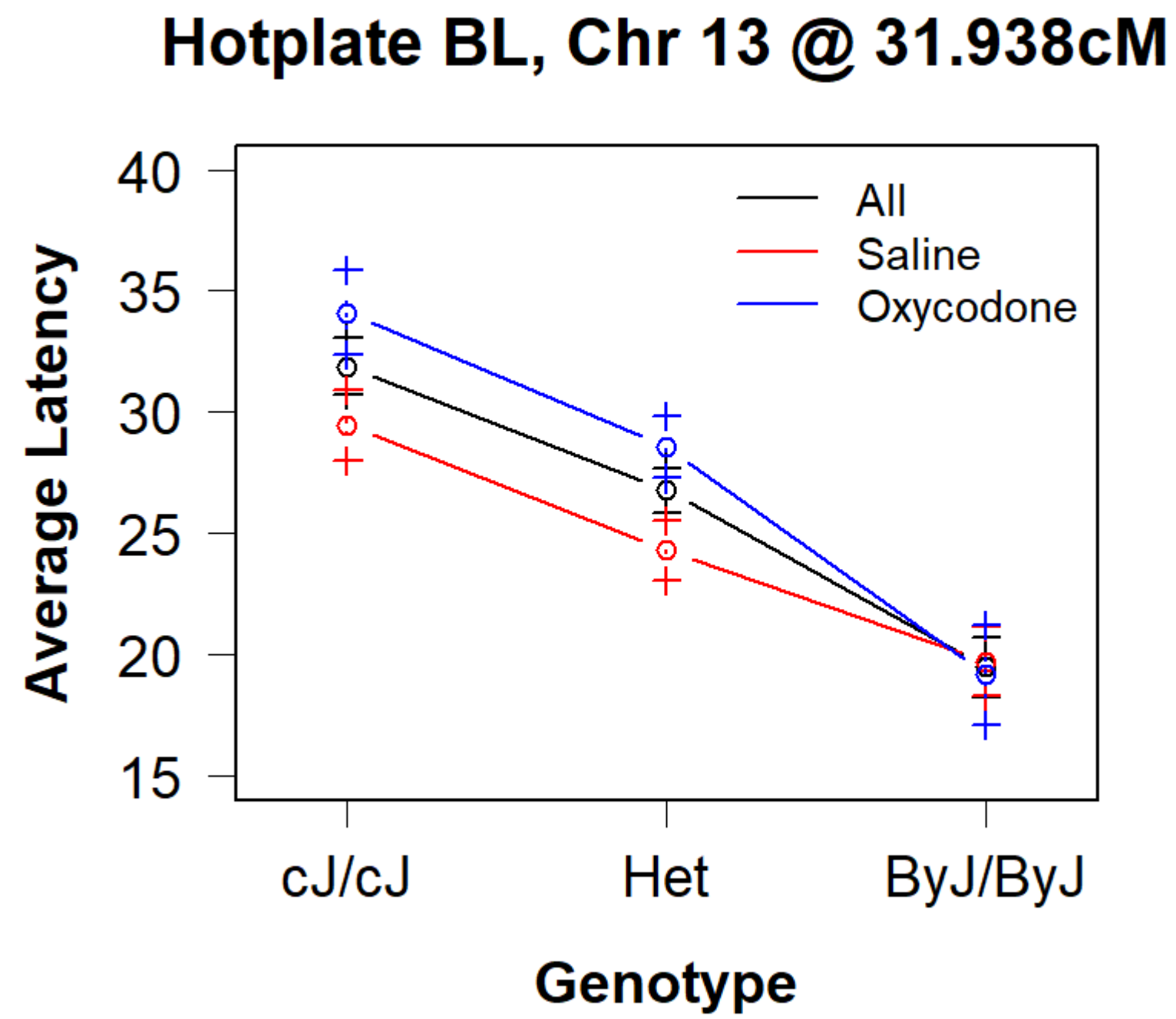
Figures for the paper

Supplementary Figure 1: Parental strain hot plate latencies and brain weights by prior treatment

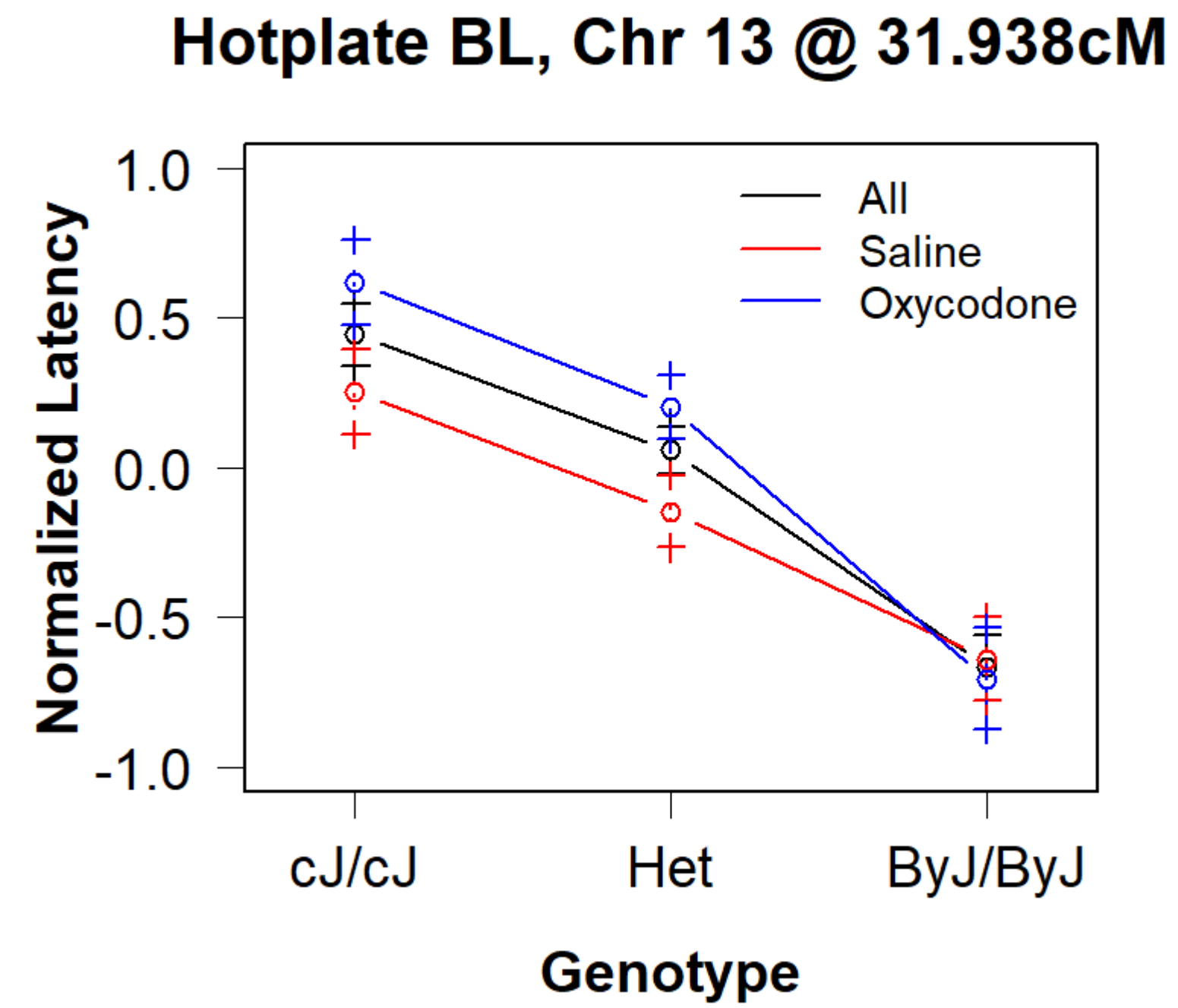


Supplementary Figure 2: Saline-only QTLs for raw and normalized hot plate latencies

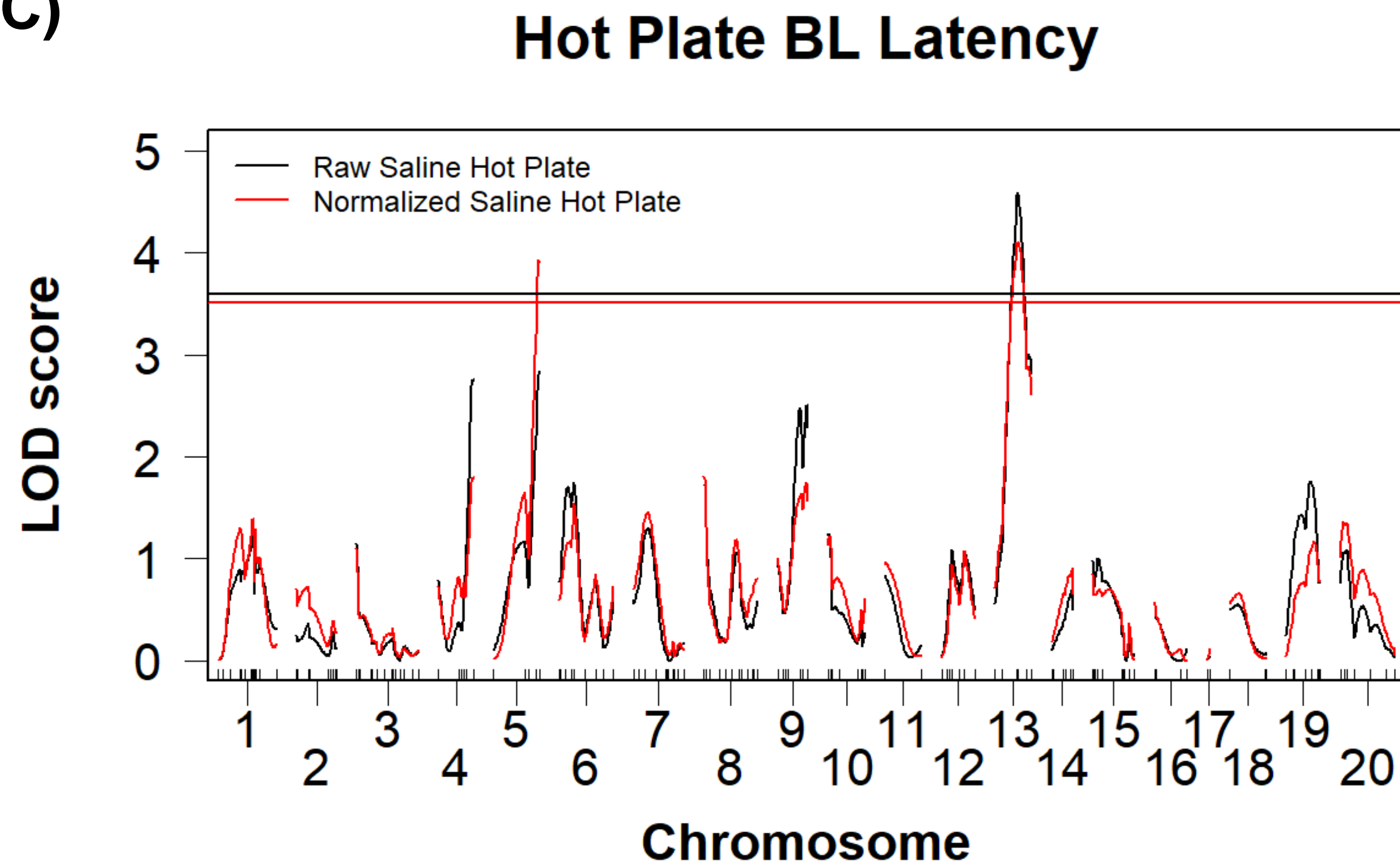
(A)



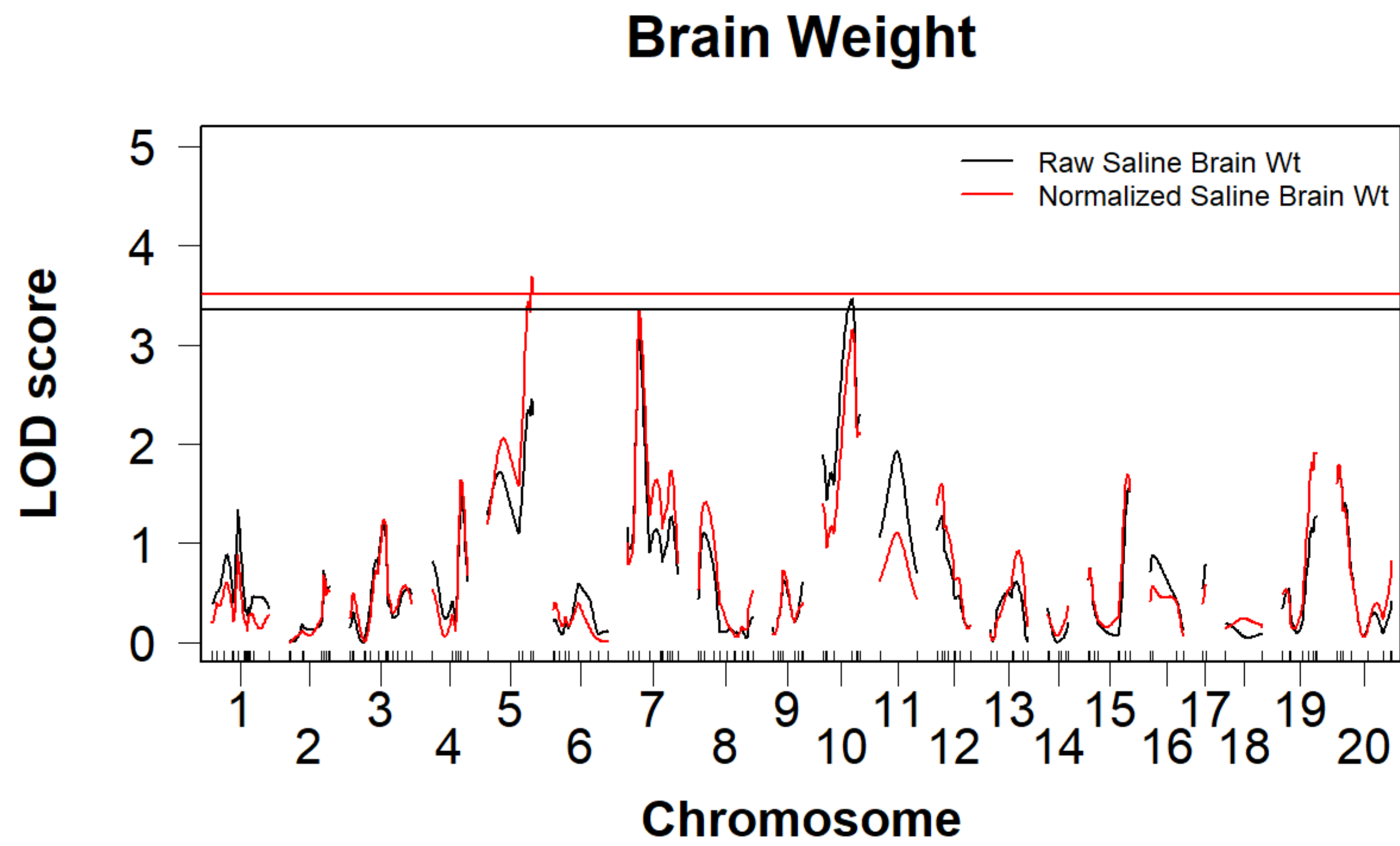
(B)



(C)

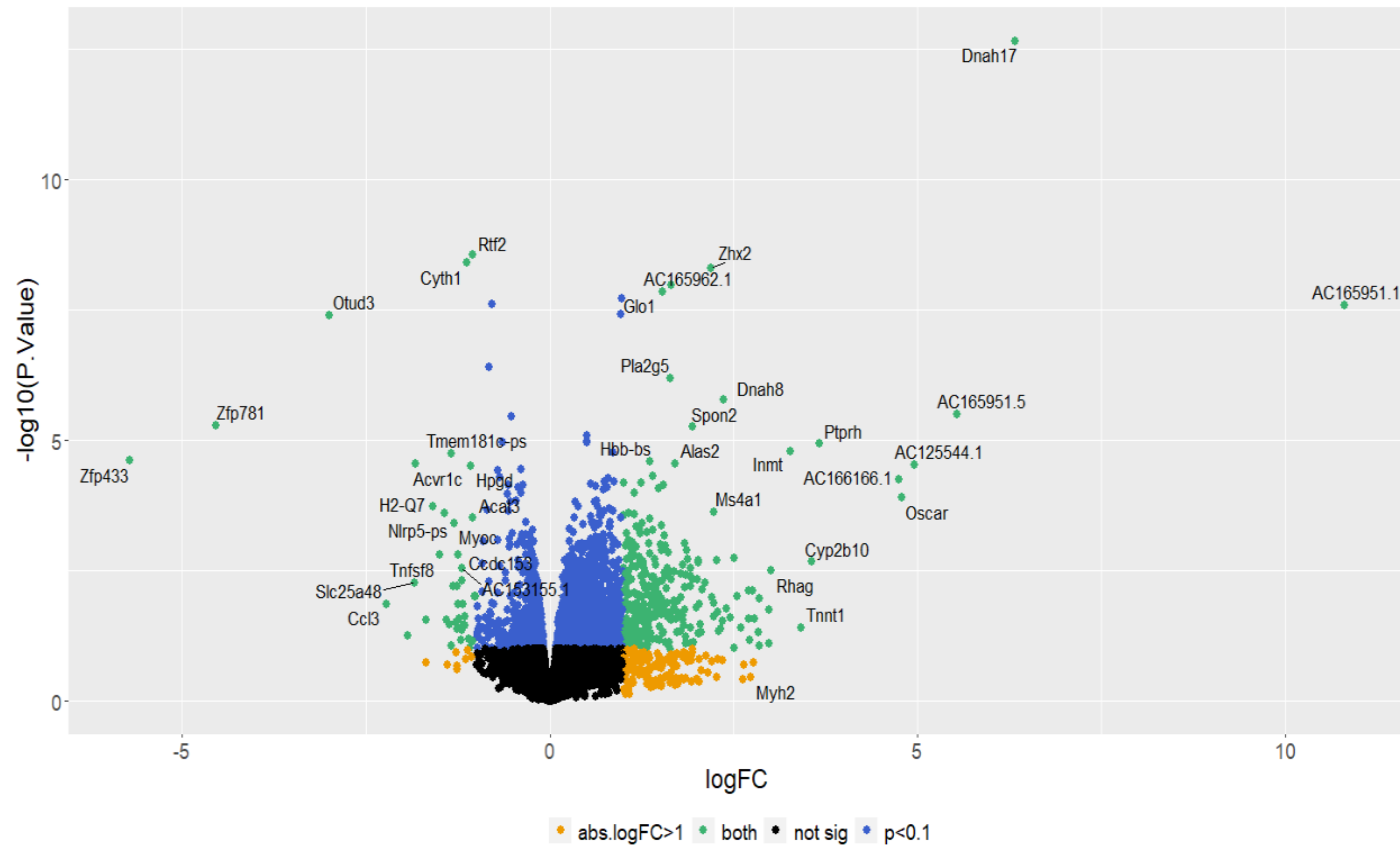


Supplementary Figure 3: Saline-only QTLs for raw and normalized brain weights



Supplementary Figure 4: Spinal cord transcriptome analysis of differential expression in BALB/c substrains by sex

(A)



(B)

