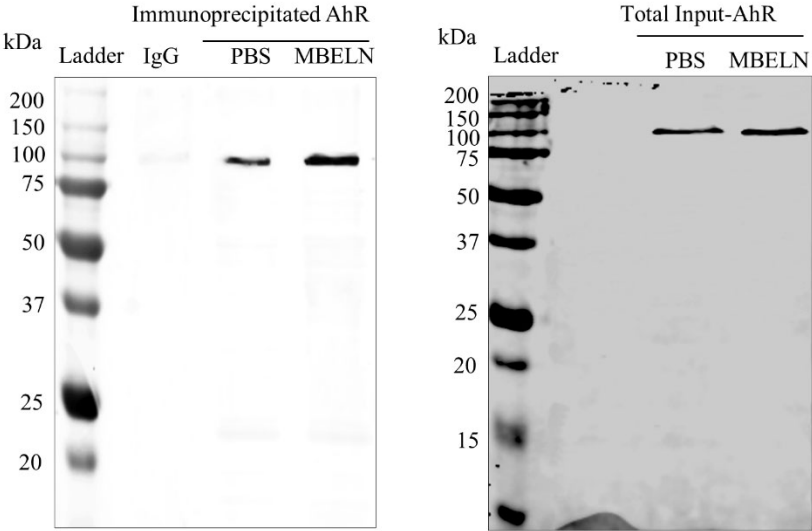
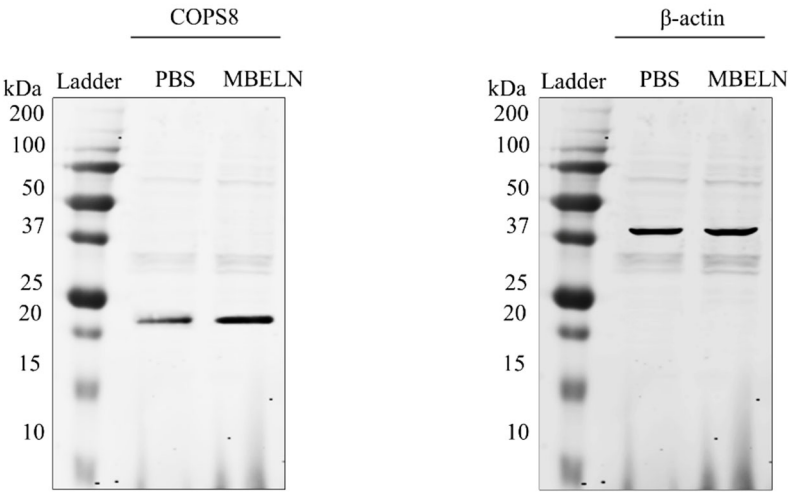


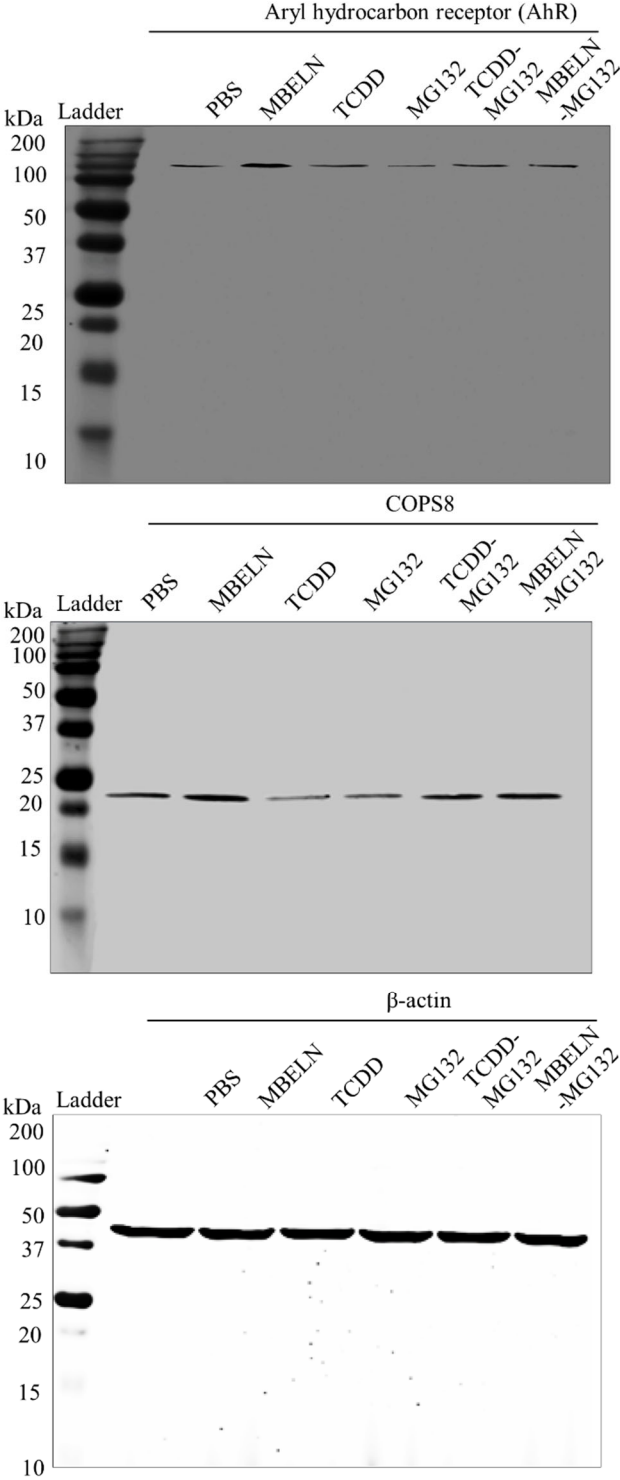
Source data fig 2B: Immunoprecipitation assay using COPS8 in MC38 cells.



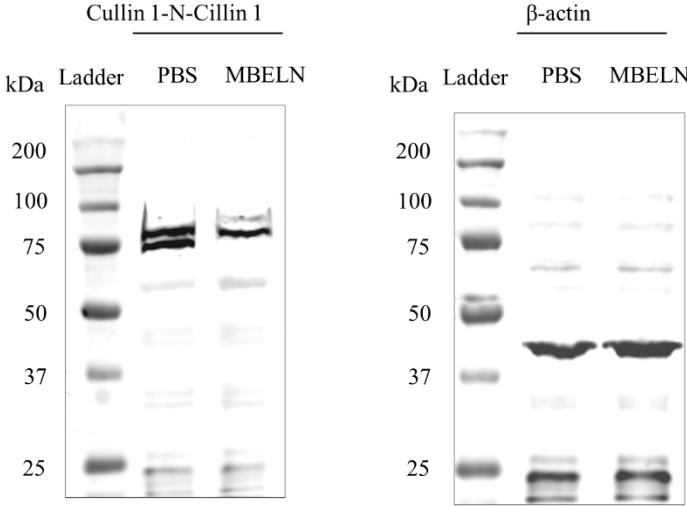
Source data fig 2C: Western blot analysis showing expression of COPS8 in mice ileum crypts.



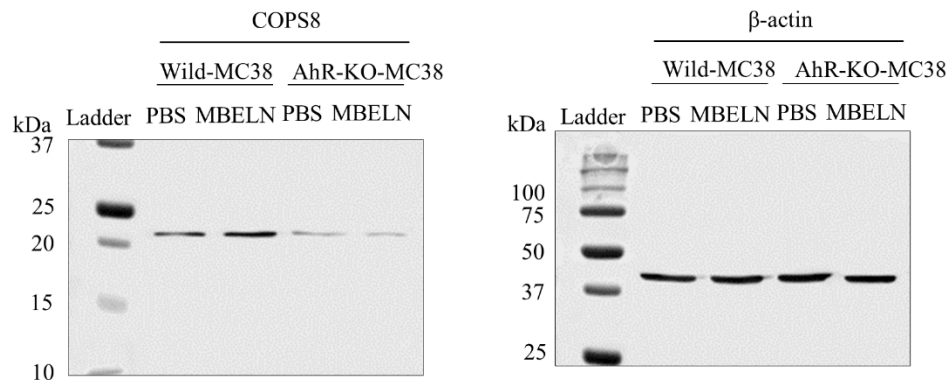
Source data fig 2E: Western blot showing MBELNs, TCDD and MG132 effect on co-expression of AhR and COPS8.



Source data fig 2G: Western blot analysis showing Expression of Cullin 1 (CUL1) and neddylated CUL1 (N-CUL1).



Source data fig 2H: Western blot showing expression of COPS8 in wildtype (Wild) and AhR-KO MC38 cells.



Source data fig 2I: Western blot showing expression of AhR in wildtype (Wild) and COPS8-KO MC38 cells.

