

**Review of over 15 years post-marketing safety surveillance spontaneous data for the human rotavirus vaccine (*Rotarix*) on intussusception**

**Journal:** Drug Safety

**Authorship:** Tina Singh<sup>1</sup>, Frédérique Delannois<sup>1</sup>, François Haguinet<sup>1</sup>, Lifeter Yenwo Molo<sup>1</sup>

**Affiliations:**

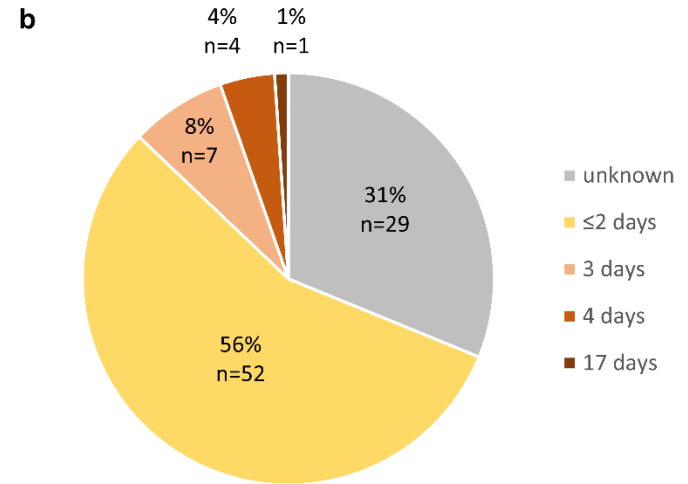
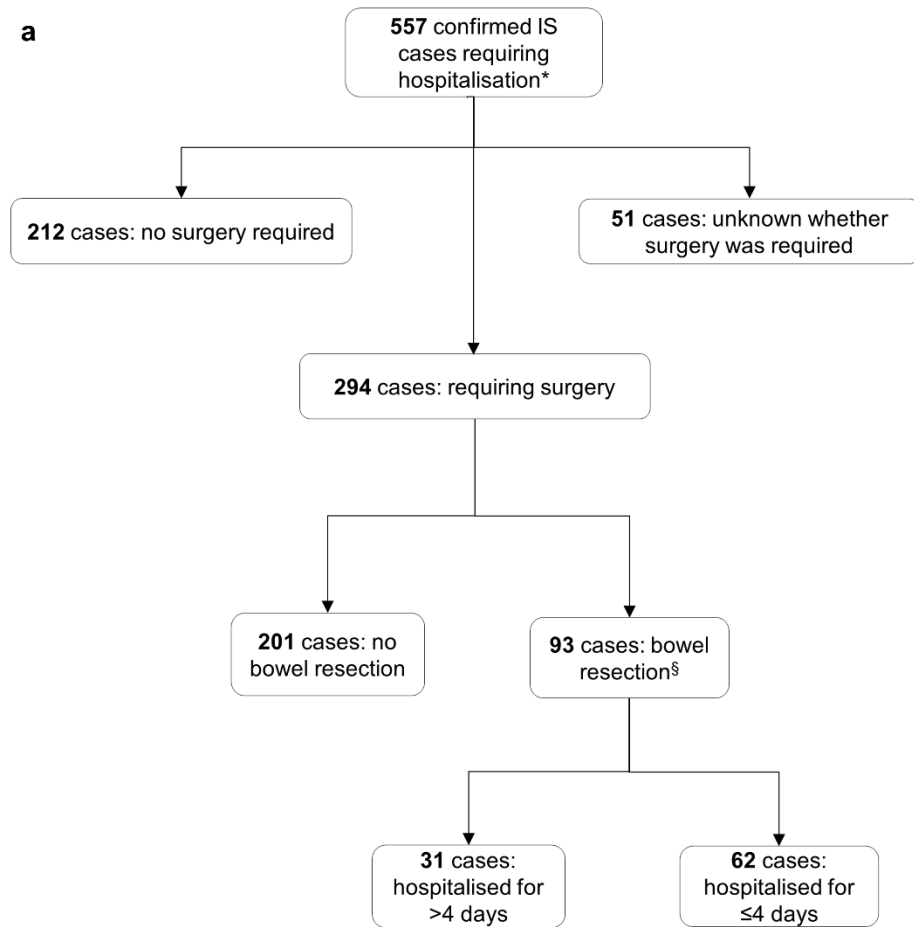
<sup>1</sup>GSK, Avenue Fleming 20, 1300 Wavre, Belgium

**Corresponding author:**

Tina Singh

[tina.x.singh@gsk.com](mailto:tina.x.singh@gsk.com)

**Electronic supplementary material 4** Overview of (a) surgical management of hospitalised confirmed intussusception (IS) cases with a time to onset of  $\leq 30$  days and (b) duration between IS onset and treatment initiation in patients with bowel resection



\*These cases are indicated with the same symbol in **Fig 1**. Duration of hospitalisation for these cases is detailed in **ESM 2**. <sup>§</sup>Duration between IS onset and treatment initiation for these cases is detailed in panel **b** of this figure/