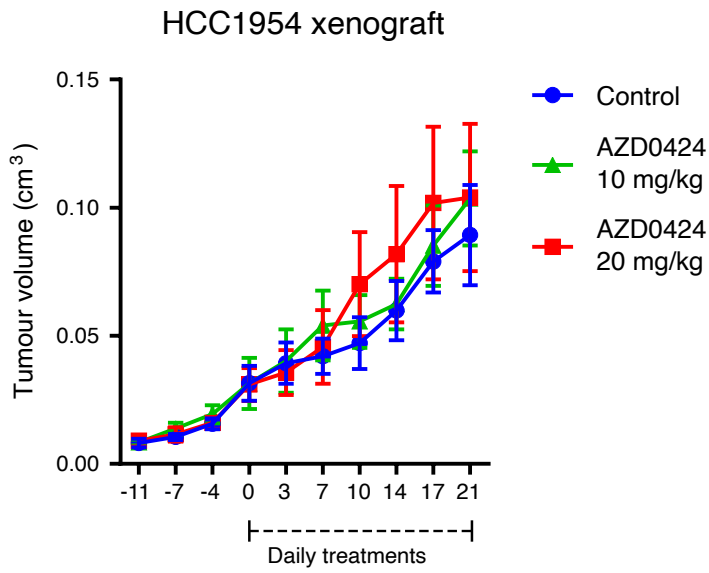
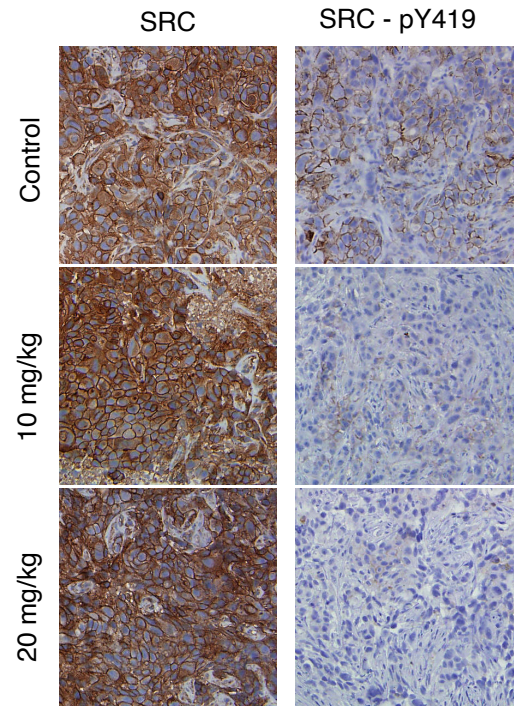


**A****B**

Supplementary Figure 1. AZD0424 inhibits the activation of SRC in vivo. (A), AZD0424 does not inhibit tumour growth of HCC1954 tumours. Tumour volumes are plotted as means  $\pm$  SEM [ $n \geq 4$  mice per group (2 tumours per mouse)]. (B), Immunohistochemical analysis of phosphorylated SRC Tyr419 in HCC1954 tumours taken from mice treated with AZD0424.