

Supporting Information for

Original article

**Abrogation of HnRNP L enhances anti-PD-1 therapy efficacy
via diminishing PD-L1 and promoting CD8⁺ T cell-mediated
ferroptosis in castration-resistant prostate cancer**

Xumin Zhou^{a,†}, Libin Zou^{a,†}, Hangyu Liao^{b,†}, Junqi Luo^a, Taowei Yang^a, Jun Wu^a,
Wenbin Chen^a, Kaihui Wu^a, Shengren Cen^a, Daojun Lv^d, Fangpeng Shu^e, Yu Yang^f,
Chun Li^{c,*}, Bingkun Li^{a,*}, Xiangming Mao^{a,*}

^a*Department of Urology, Zhujiang Hospital, Southern Medical University, Guangzhou 510280, China*

^b*Second Department of Hepatobiliary Surgery, Zhujiang Hospital, Southern Medical University, Guangzhou 510280, China*

^c*Nursing Department, Nanfang Hospital, Southern Medical University, Guangzhou 510515, China*

^d*Department of Urology, Minimally Invasive Surgery Center, the First Affiliated Hospital of Guangzhou Medical University, Guangzhou 510120, China*

^e*Department of Urology, Guangzhou Women and Children's Medical Center, Guangzhou Medical University, Guangzhou 510623, China*

^f*Department of Urology, Peking University Shenzhen Hospital, Shenzhen 518036, China*

Received 12 May 2021; received in revised form 20 June 2021; accepted 9 July 2021

*Corresponding authors. Tel.: +86 20 62782725; fax: +86 20 62782725.

E-mail addresses: 120601847@qq.com (Chun Li); 25840416@qq.com (Bingkun Li); mxm@smu.edu.cn (Xiangming Mao).

[†]These authors made equal contributions to this work.

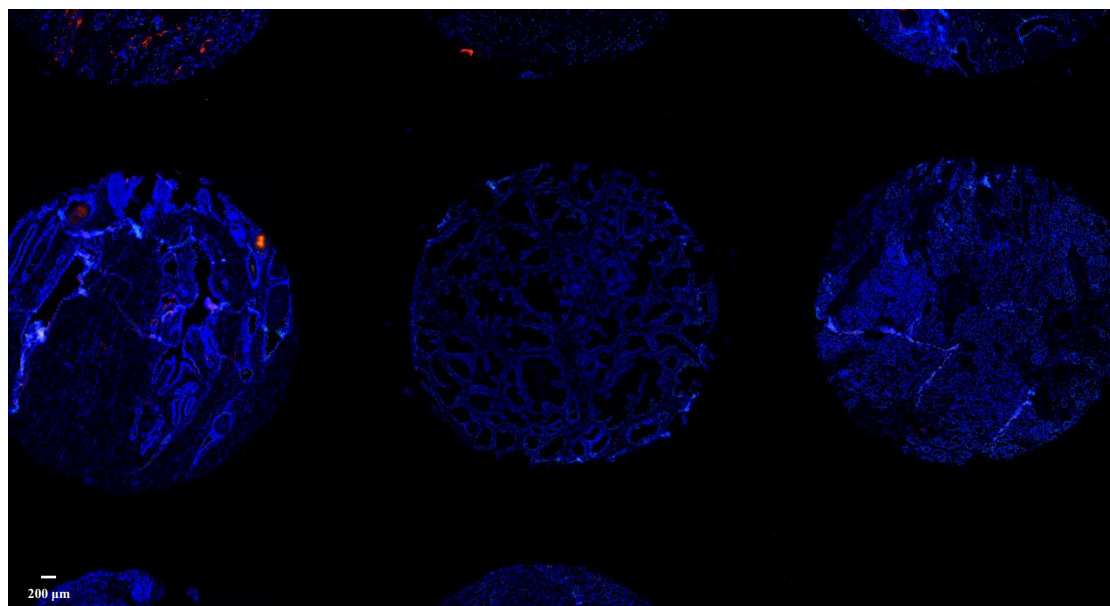
Running title: Abrogation of HnRNP L enhances anti-PD-1 therapy efficacy

Table S1 Primer sequences for qRT-PCR.

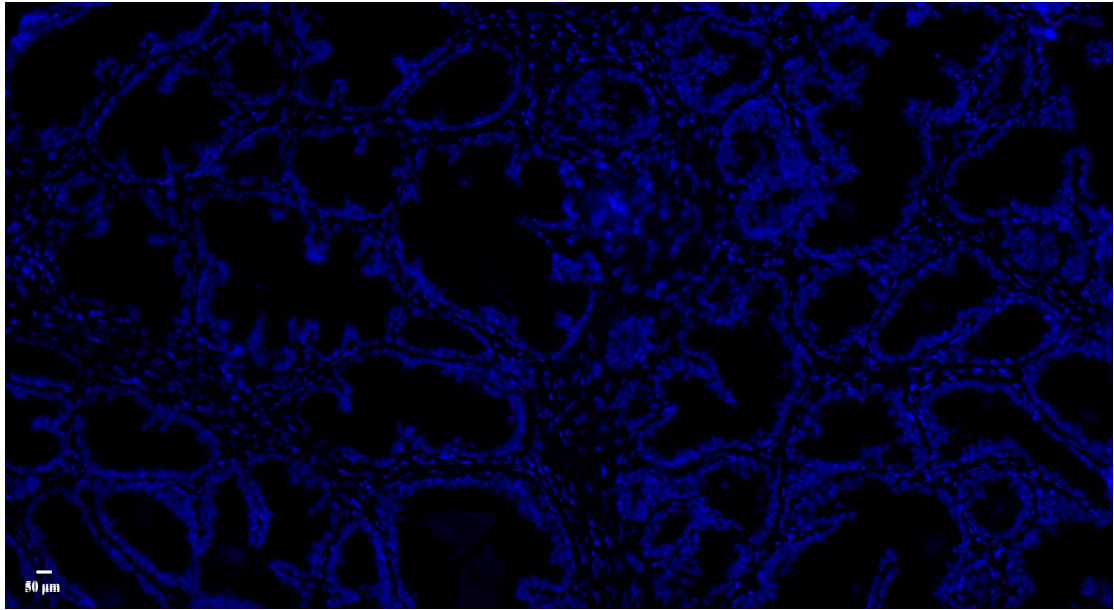
Primers	Sequences 5'→3'
Human <i>HNRNPL</i> -F	TTGTGGCCCTGTCCAGAGAATT
Human <i>HNRNPL</i> -R	GTTTGTGTAGTCCCAAGTATCCTG
Mouse <i>Hnrnpl</i> -F	TGGCAGTAACCCCAACAAAC
Mouse <i>Hnrnpl</i> -R	CATCATGGTAATGGCTGTGGT
Human <i>CD274</i> -F	GCTCCAAAGGACTTGTACGTG
Human <i>CD274</i> -R	TGATCTGAAGGGCAGCATTTC
Mouse <i>Cd274</i> -F	GCTCCAAAGGACTTGTACGTG
Mouse <i>Cd274</i> -R	TGATCTGAAGGGCAGCATTTC
Mouse <i>Gapdh</i> -F	AGAAGGTGGTGAAGCAGGCATC
Mouse <i>Gapdh</i> -R	CGAAGGTGGAAGAGTGGGAGTTG
Human <i>GAPDH</i> -F	AGAAGGCTGGGGCTCATTG
Human <i>GAPDH</i> -R	AGGGGCCATCCACAGTCTTC

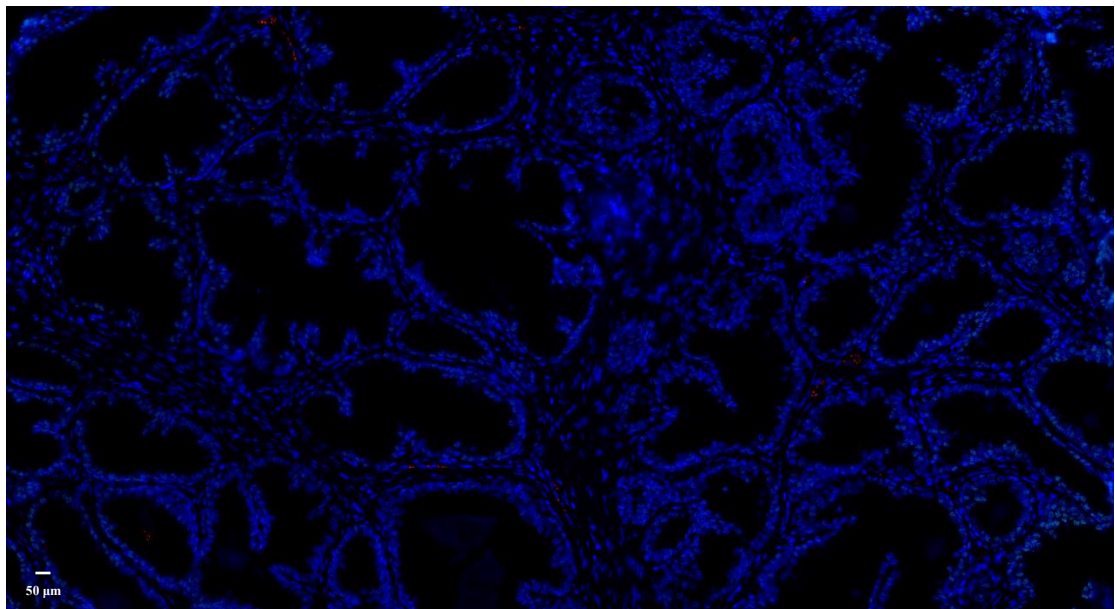
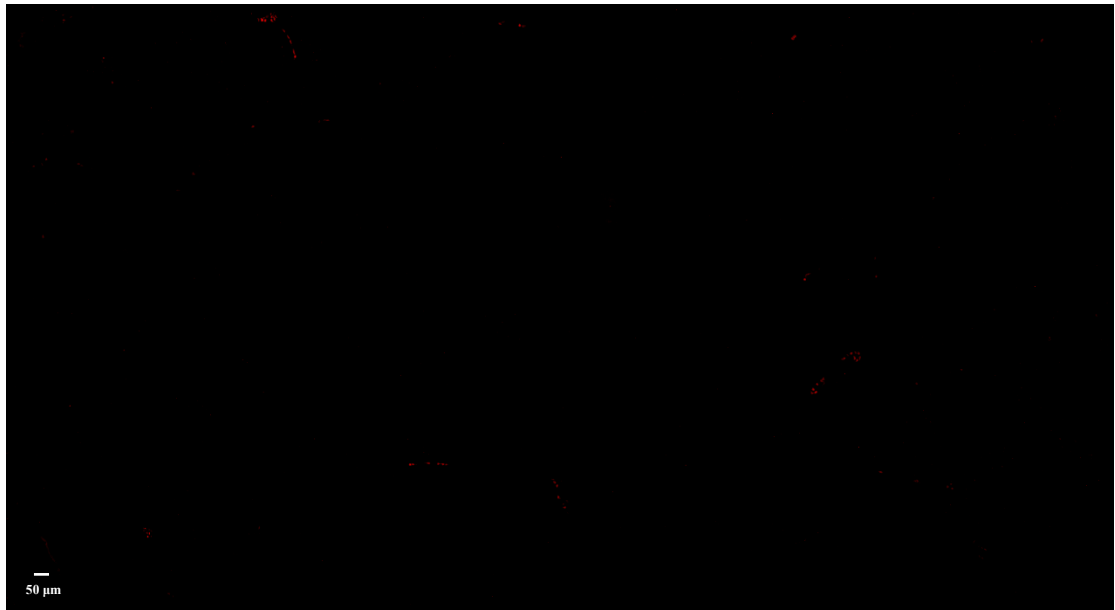
Figure S1 For Fig. 1F-Normal

5 ×



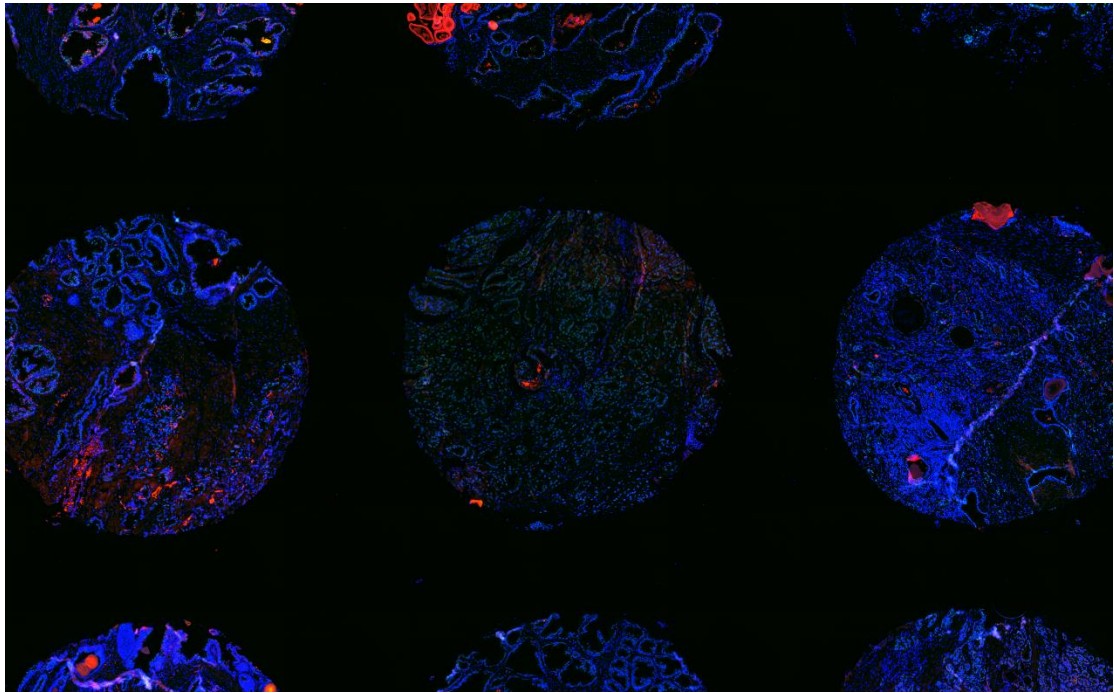
20 ×



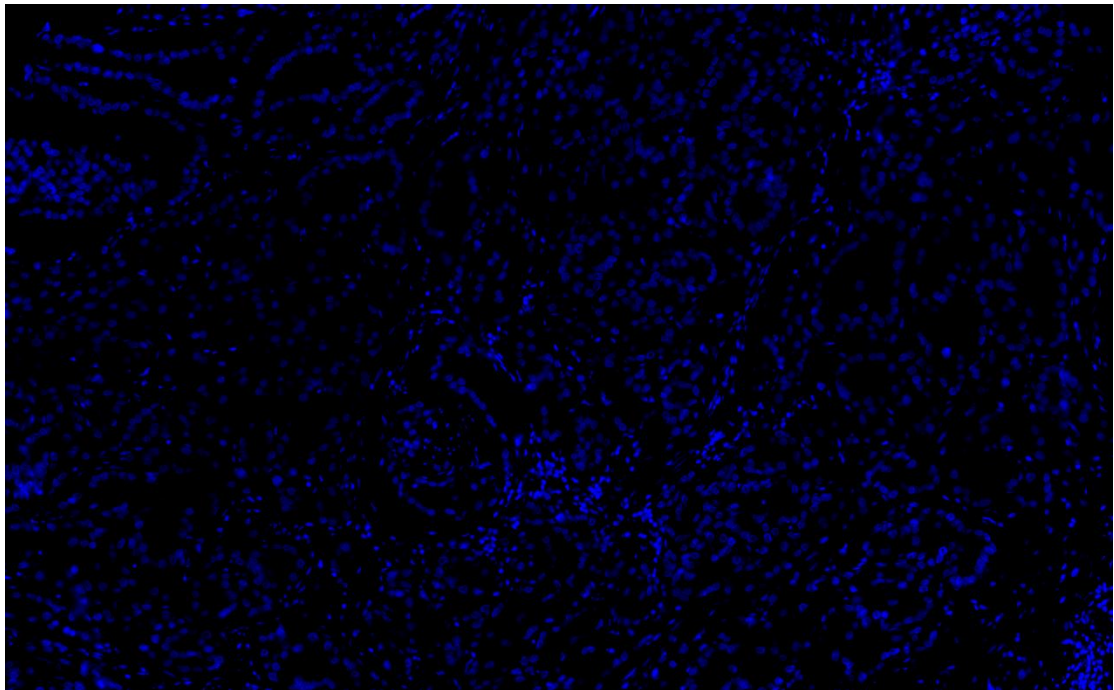


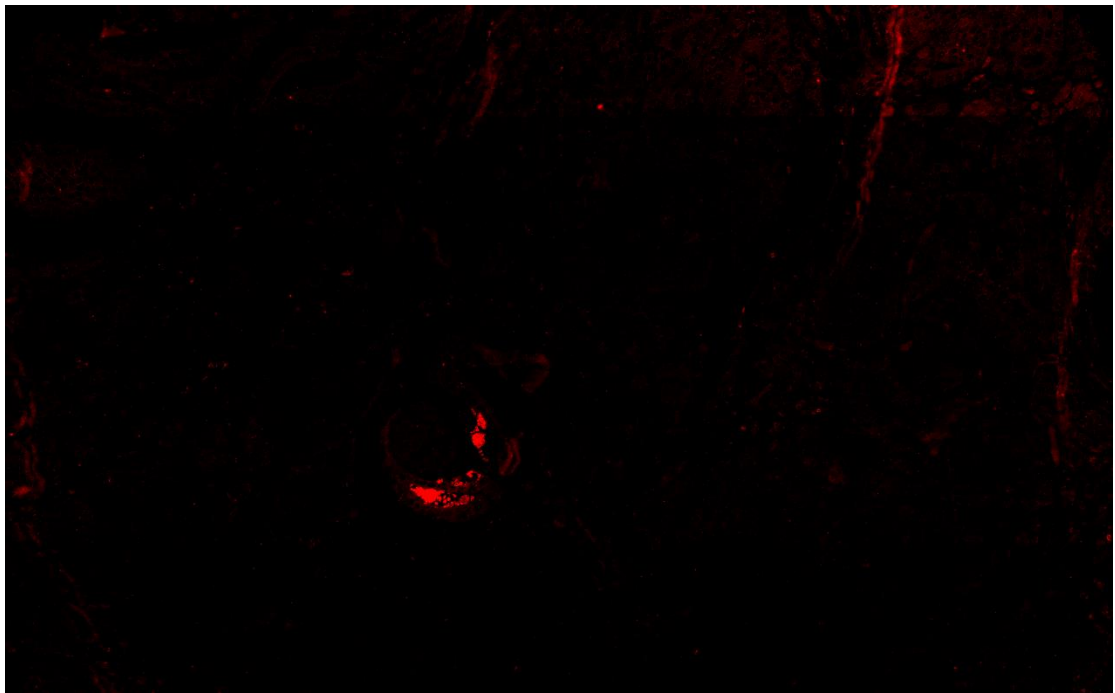
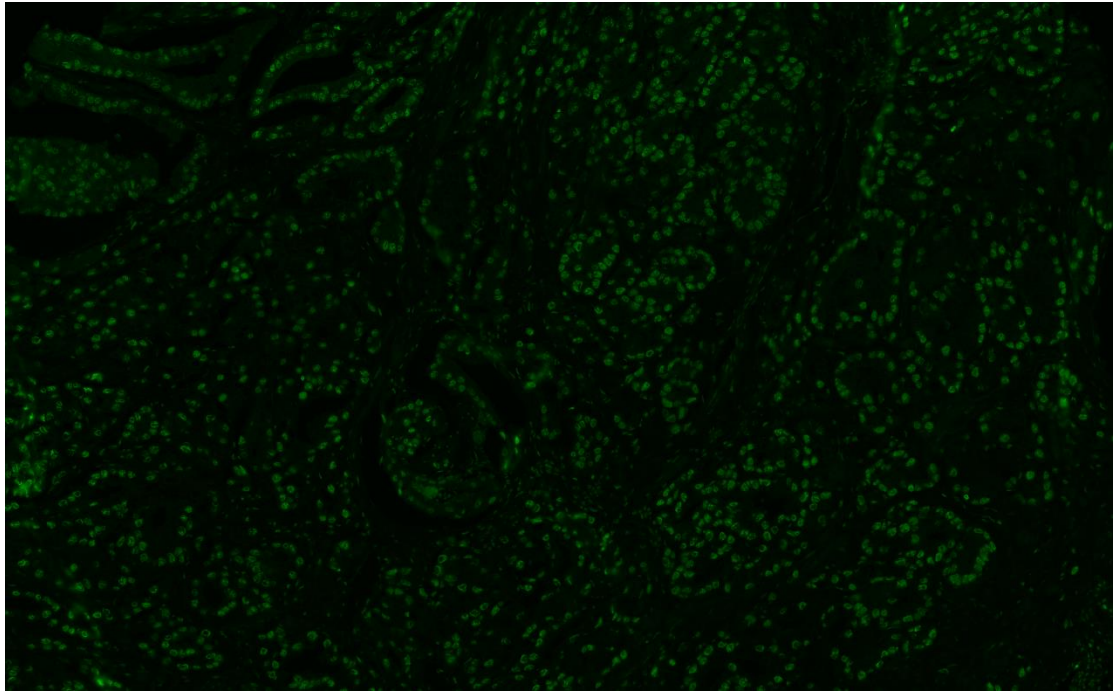
For Fig. 1F-Tumor 1

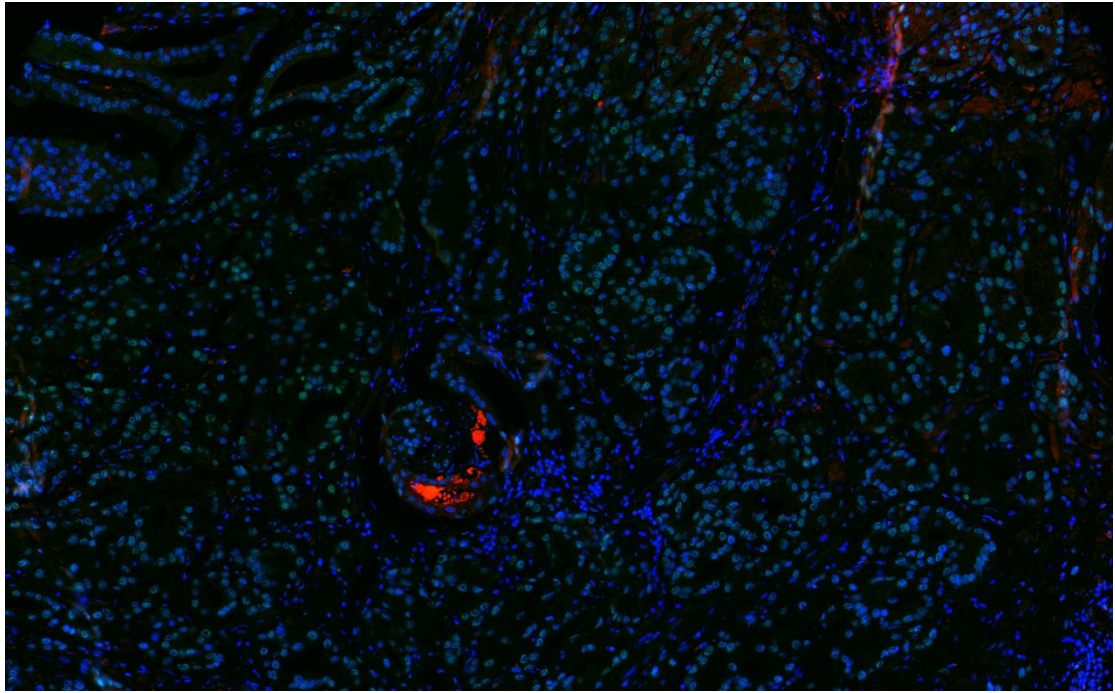
5 ×



20 ×

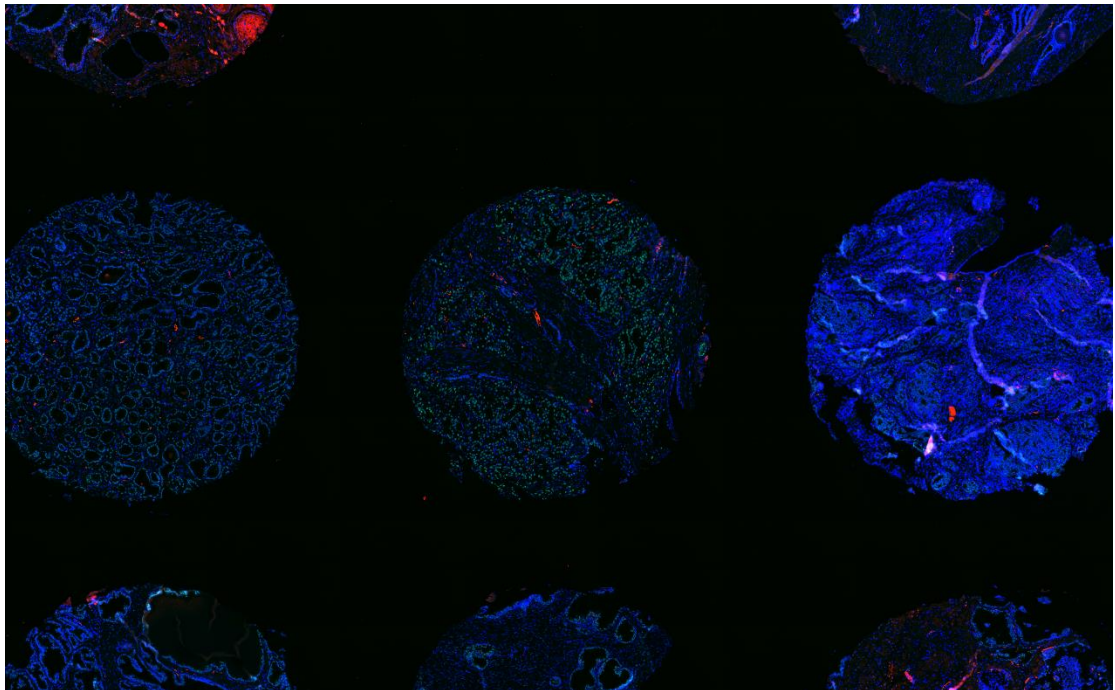




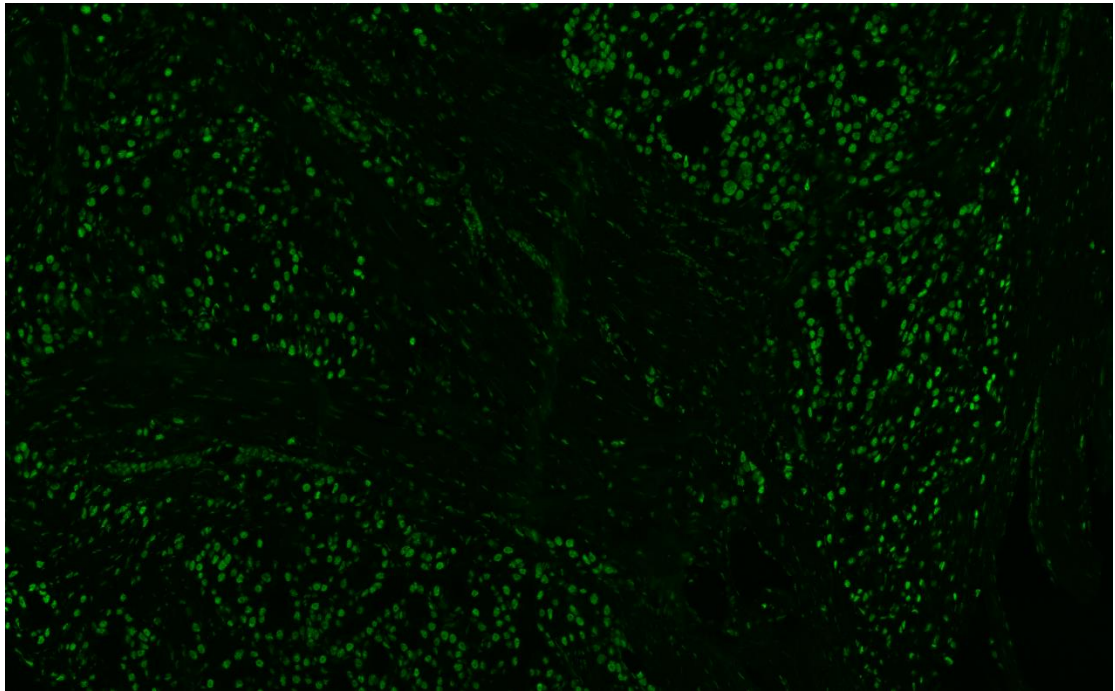
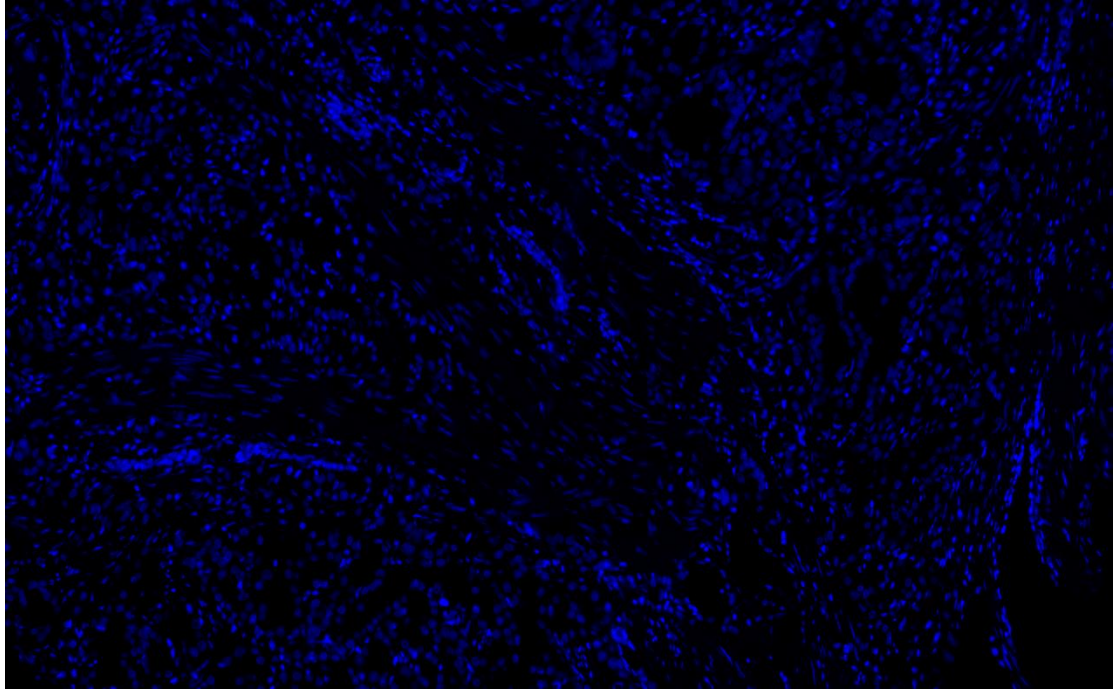


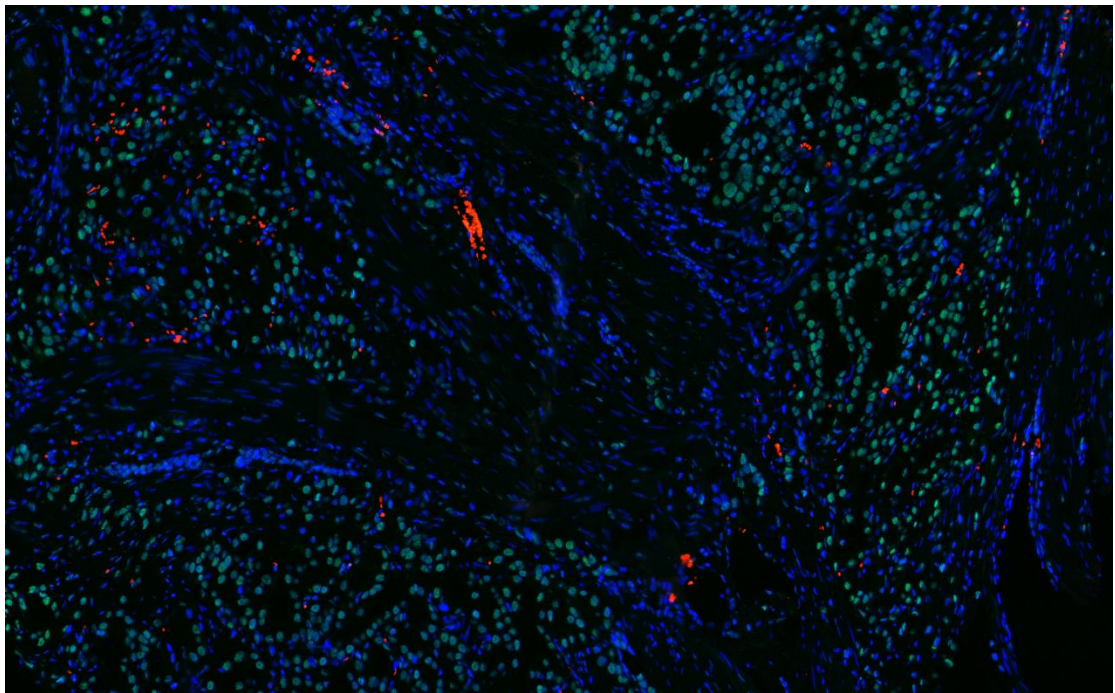
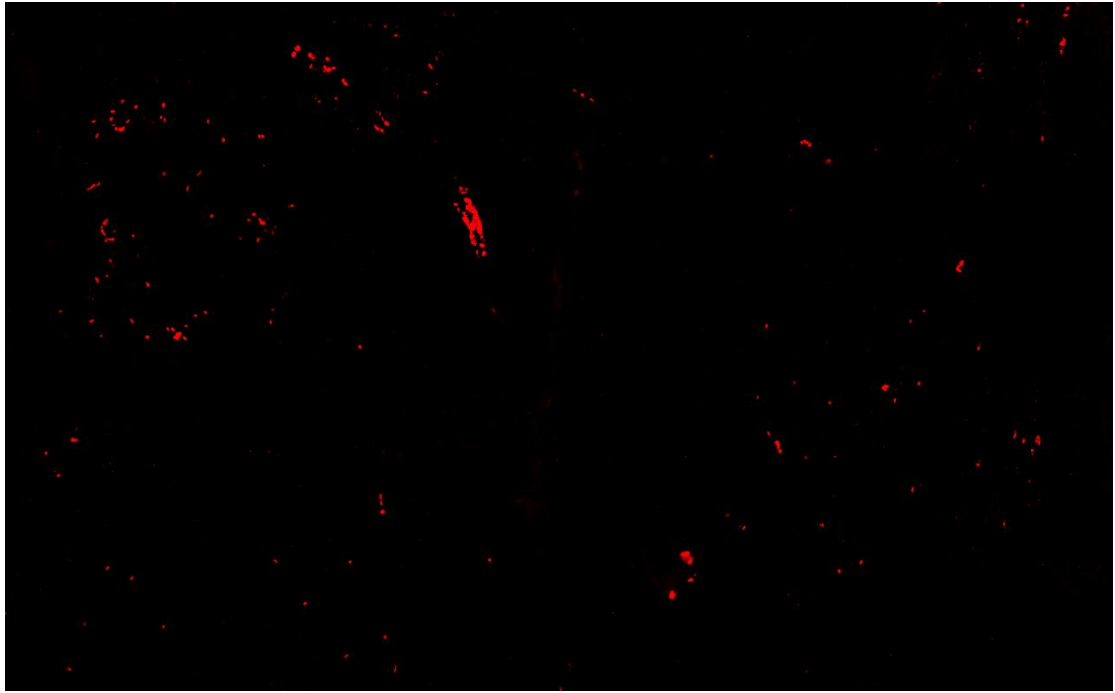
For Fig. 1F-Tumor 2

5 ×



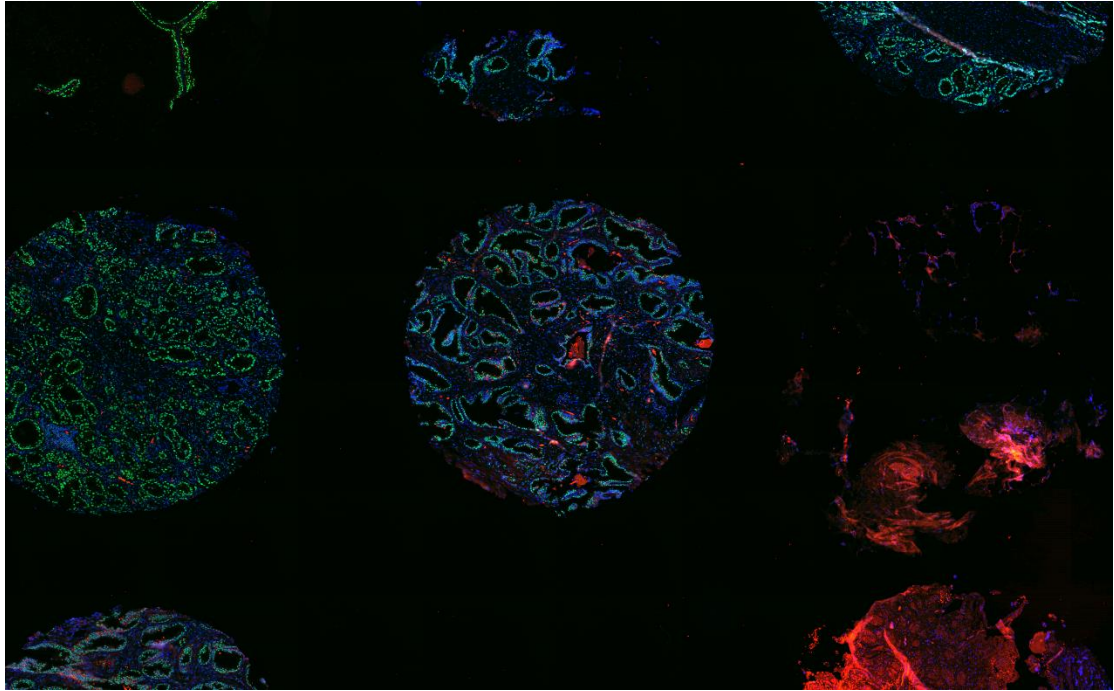
20 ×





For Fig. 1F-Tumor 3

5 ×



20 ×

