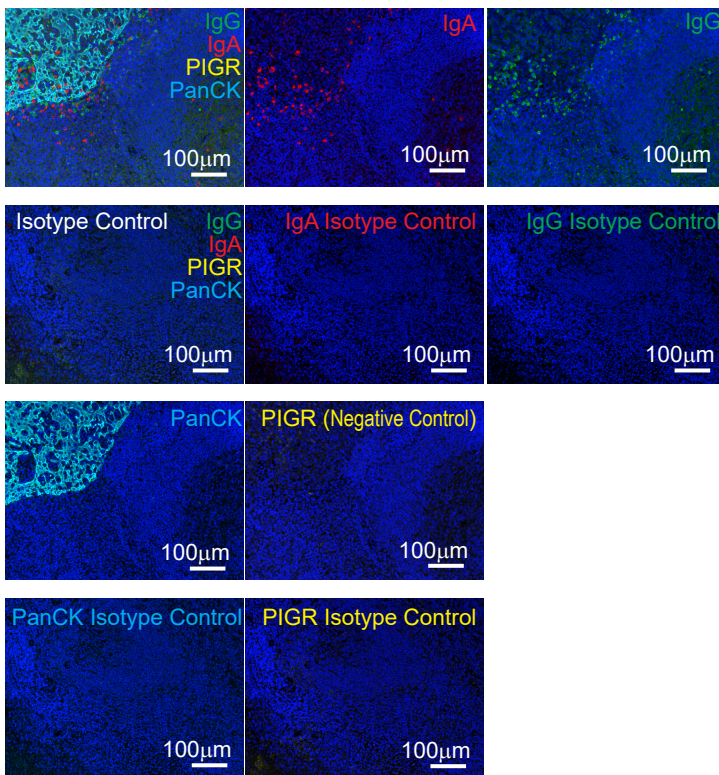
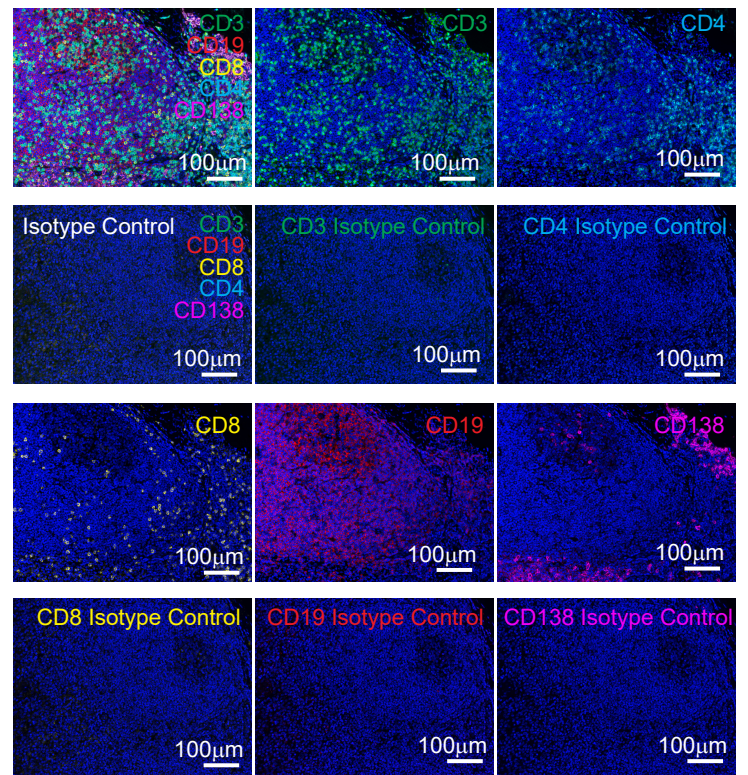


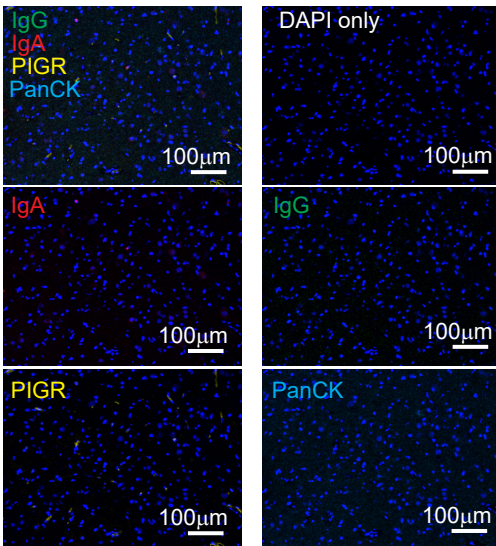
Tonsil



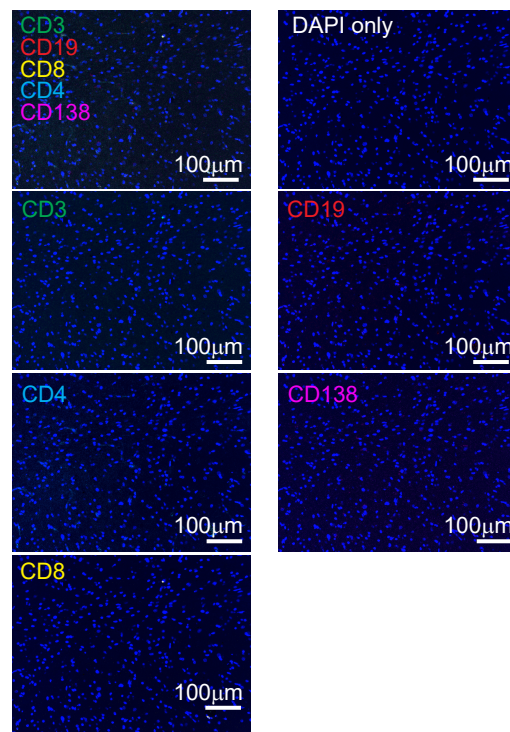
Tonsil



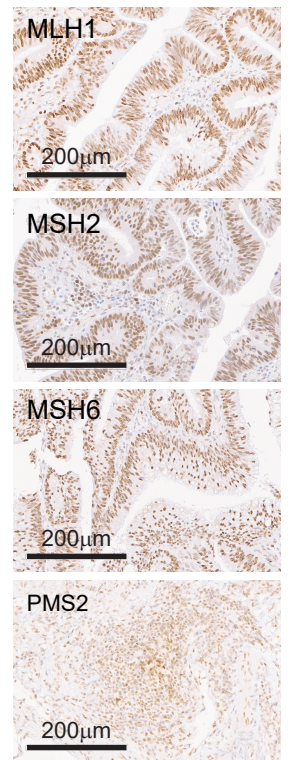
Negative controls in Glioblastoma



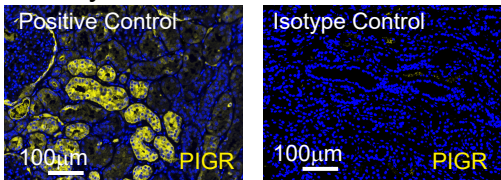
Negative controls in Glioblastoma



Colon adenocarcinoma



Kidney



Supplementary Figure S1. Optimization of immunohistochemistry staining for IgA, IgG, pIgR, PCK, CD3, CD4, CD8, CD19, CD138, MLH1, MSH2, MSH6 and PMS2. Multiplex staining of tonsil (positive control, except for pIgR; $n = 5$) and glioblastoma tissue sections (negative control; $n = 5$) with anti-human IgA, IgG, pIgR, PCK, CD3, CD4, CD8, CD19 and CD138 antibodies and respective isotype controls; and healthy kidney tissue sections ($n = 4$) stained with anti-human pIgR antibody (positive control) and respective isotype controls. Immunohistochemistry staining of colon adenocarcinoma tissue sections (positive control, $n = 3$) with anti-human MLH1, MSH2, MSH6 and PMS2 antibodies. Scale bar, 100 or 200 μm , as indicated.