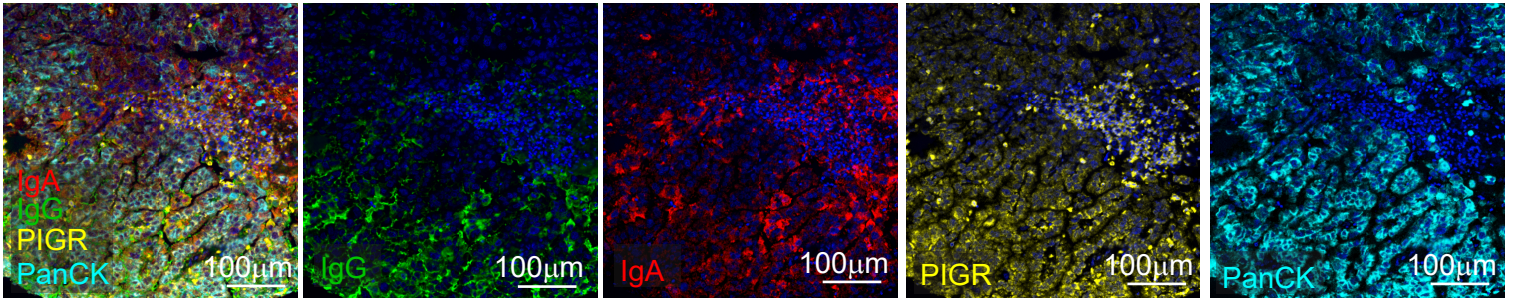
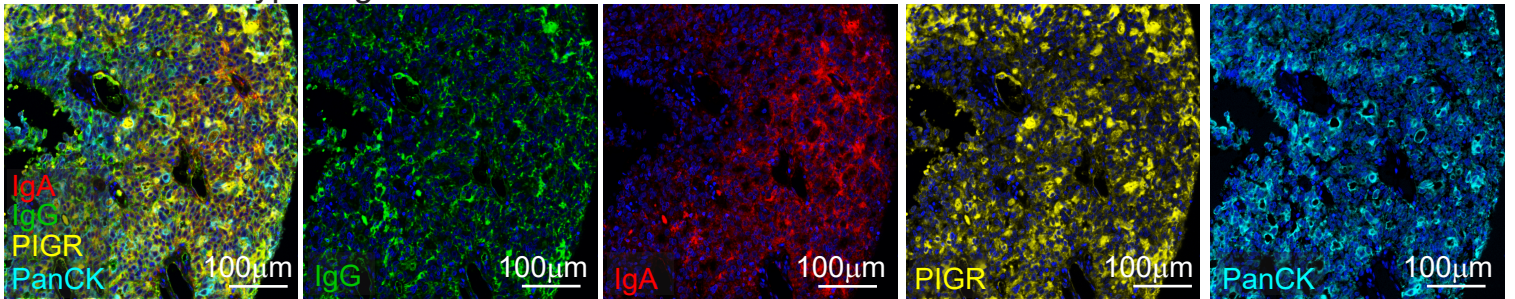


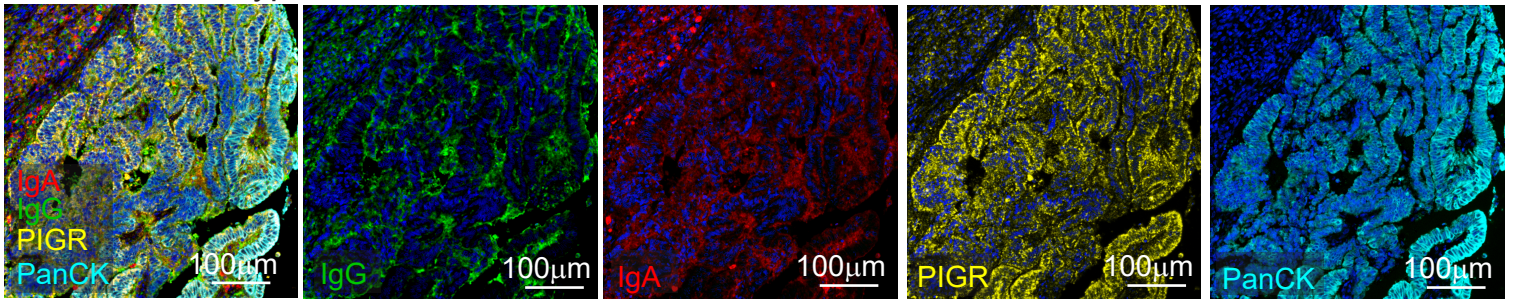
Clear Cell



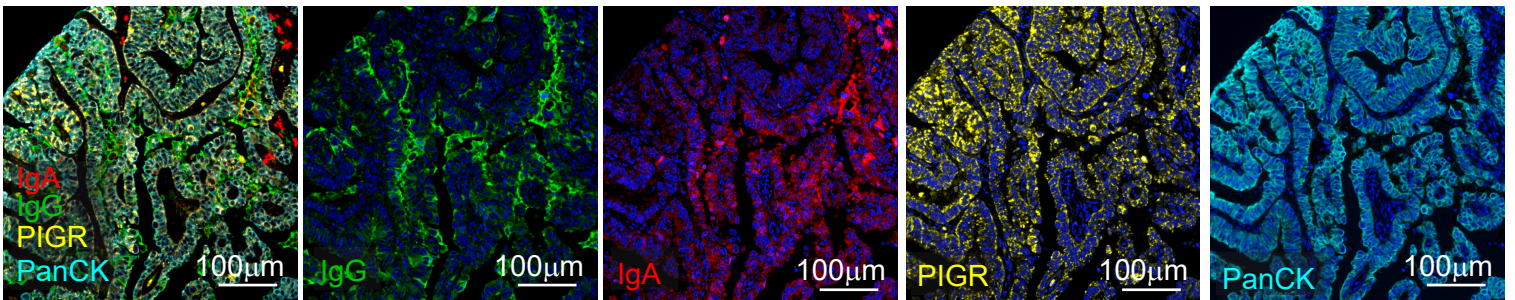
Endometrioid Type High Grade



Endometrioid Type Low Grade



Serous



**Supplementary Figure S2. Representative multiplex immunohistochemistry images.** IgA, IgG, pIgR staining in tumor islets (PCK<sup>+</sup> area) or in stroma (PCK<sup>-</sup> area), in clear cell, endometrioid type high grade, endometrioid type low grade, and serous endometrial cancer. Scale bar, 100  $\mu$ m.