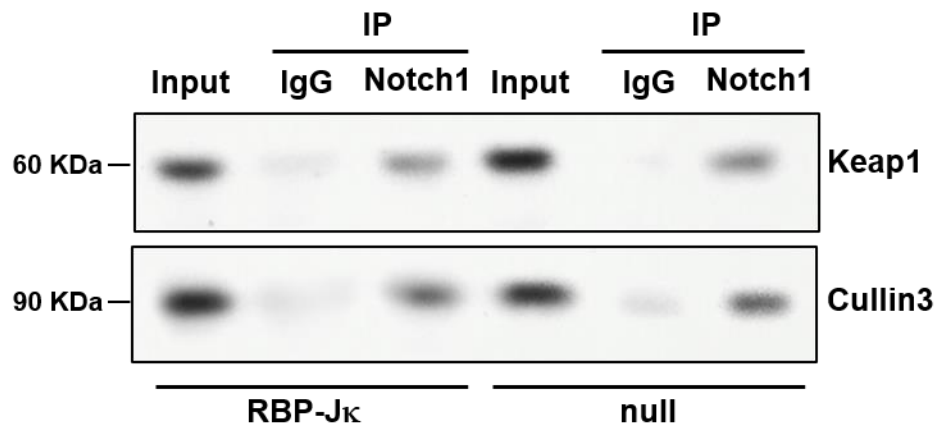
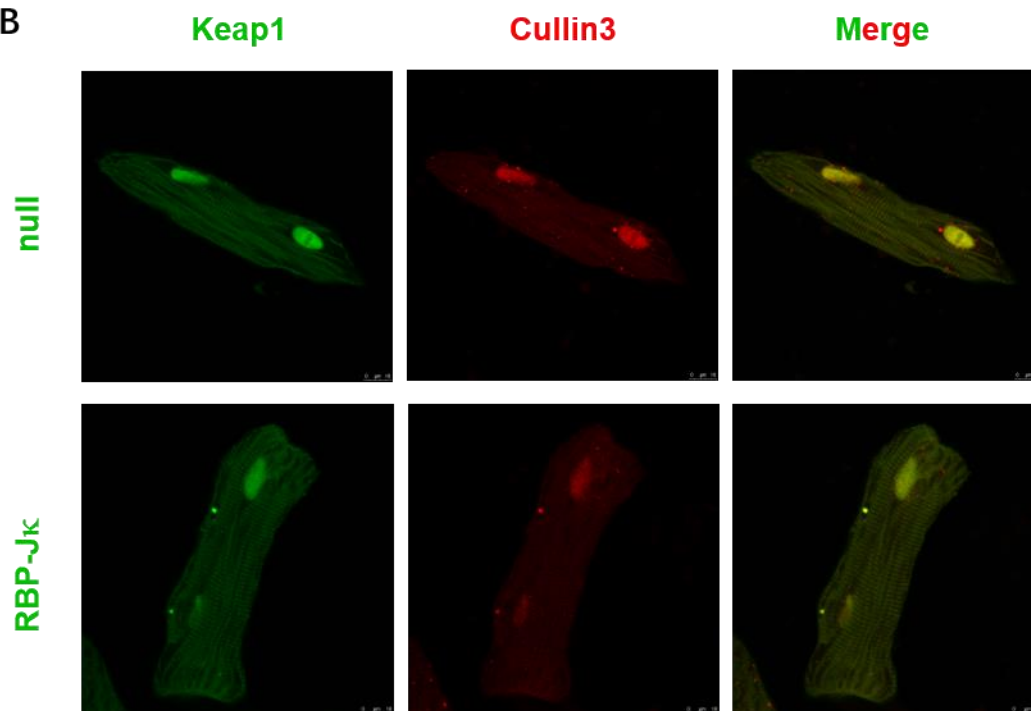


A



B



**Supplementary Figure 1. RBP-J $\kappa$  do not affect the Keap1-Cullin3 interaction in adult cardiomyocytes.** (A) Co-immunoprecipitation assay was used to analysis the interaction between Notch1, Keap1 and Cullin3. (B) Immunofluorescence observation of the distribution of Keap1 and Cullin3 by confocal microscopy. N=3.