

1 **Supporting Information**

2

3 **Thiol-cleavable Biotin for Chemical and Enzymatic Biotinylation and its**
4 **Application to Mitochondrial TurboID Proteomics**

5

6 Haorong Li^{1*}, Ashley M. Frankenfield^{1*}, Ryan Houston², Shiori Sekine², and Ling Hao^{1‡}

7 ¹Department of Chemistry, The George Washington University, Science and Engineering Hall,
8 800 22nd St., NW, Washington, DC, 20052, USA

9 ² Aging Institute, Division of Cardiology, Department of Medicine, University of Pittsburgh,
10 Bridgeside Point I, 100 Technology Drive, Pittsburgh, PA 15219, USA

11

12 *Co-first author

13

14 ‡ Corresponding author

15 Ling Hao

16 Assistant Professor of Chemistry

17 Tel.: +1 (202) 994-4492

18 E-mail: linghao@gwu.edu

19 **TABLE OF CONTENTS**

20

21 • **Figure S1.** Example LC-MS chromatograms (A) and MS/MS spectra of peptide fragmentation
22 (B) for SS-biotin labeled, biotin-labeled, and unlabeled peptide (PNDTQWITKPVHK) from
23 ribosomal protein L15 (RPL15) in human cell lysate.

24 • **Figure S2.** Histogram distribution of precursor masses (M+H) of non-labeled, biotin-labeled,
25 and SS-biotin-labeled peptides from human cell lysate samples.

26 • **Figure S3.** Comparison of the protein digestion efficiency using Trypsin, LysC, and
27 Trypsin/Lys-C mix for SS-biotin labeled human protein lysate.

28 • **Table S1:** Thiol cleavable SS-biotin modified peptide sequences in labeled human cell lysate.

29 • **Table S2:** Protein IDs and quantification in SS-biotin labeled vs. biotin labeled vs. unlabeled
30 human cell lysate.

31 • **Table S3:** Average percolator *q*-values of modified peptides at various amino acid residues.

32 • **Table S4:** Protein IDs and quantification in STOML2-TurboID vs. control.

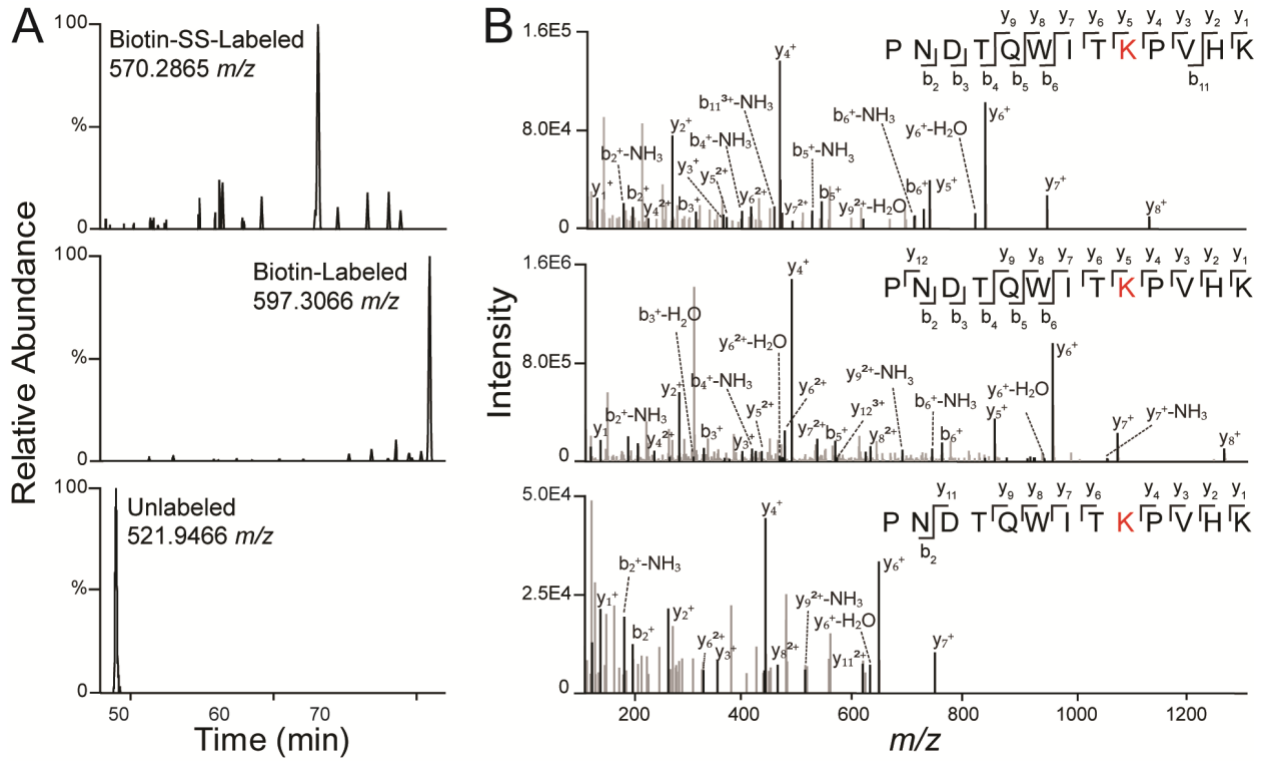
33 • **Table S5:** SS-biotinylated peptides in STOML2-TurboID Proteomics.

34 • **Table S6:** Leftover beads digestion showing that the elution was complete.

35

36

37



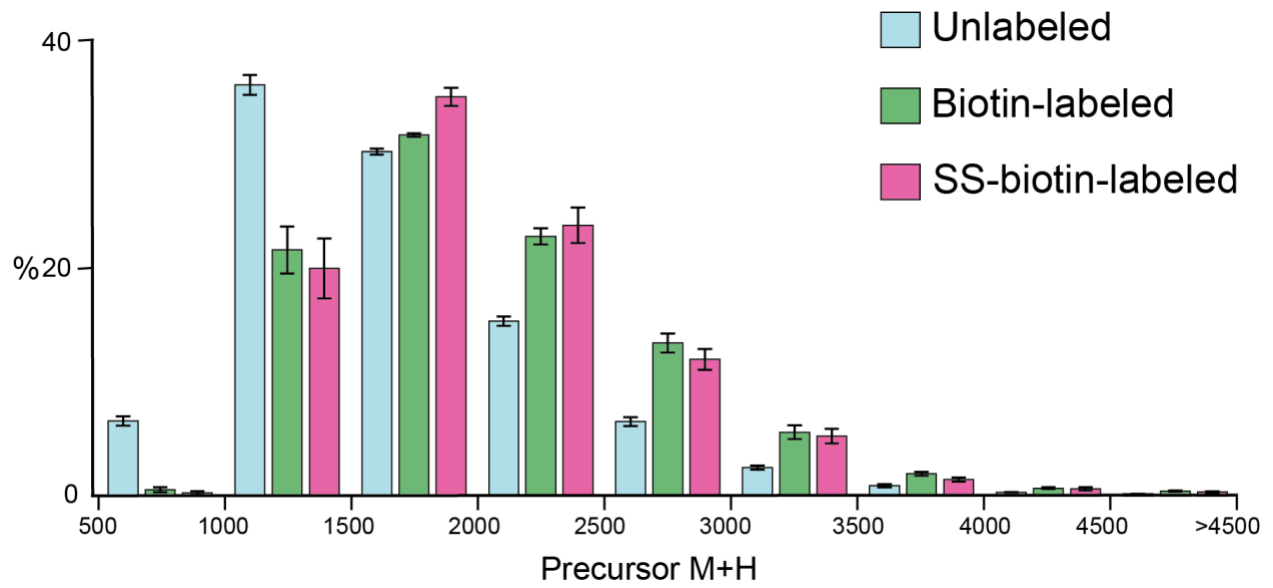
38

39 **Figure S1.** Example LC-MS chromatograms (A) and MS/MS spectra of peptide fragmentation (B)

40 for SS-biotin labeled, biotin-labeled, and unlabeled peptide (PNDTQWITKPVHK) from

41 ribosomal protein L15 (RPL15) in human cell lysate.

42



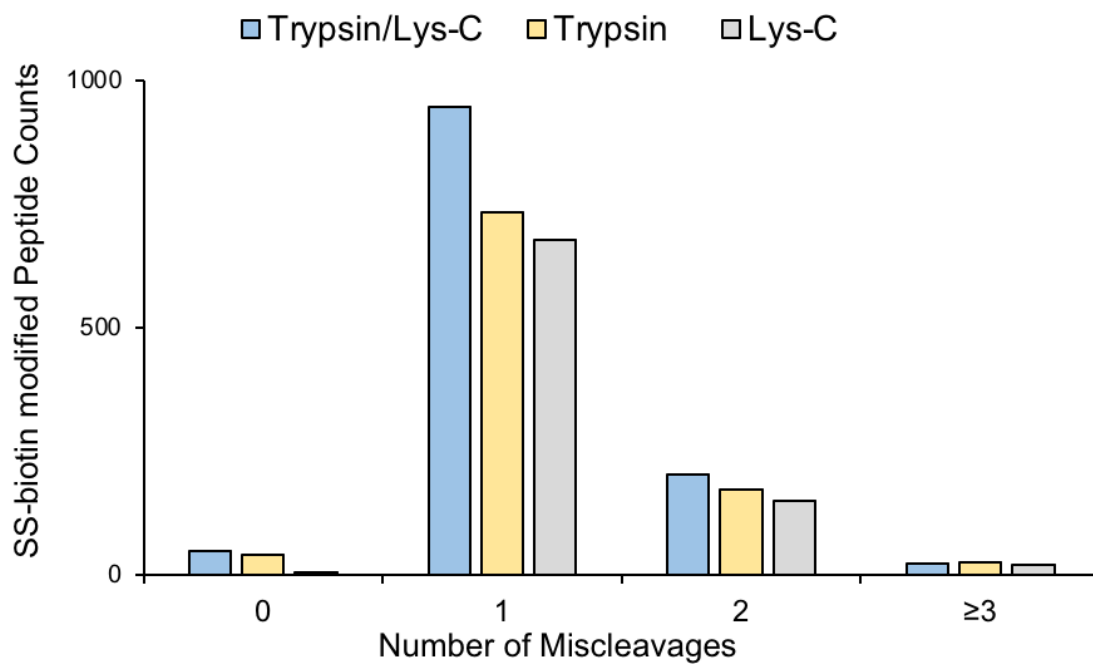
43

44 **Figure S2.** Histogram distribution of precursor masses (M+H) of non-labeled, biotin-labeled, and

45 SS-biotin-labeled peptides from human cell lysate samples.

46

47



48

49 **Figure S3.** Comparison of the protein digestion efficiency using Trypsin, LysC, and Trypsin/Lys-
50 C mix for SS-biotin labeled human protein lysate.

51