

Role of TRIM24 in CRC

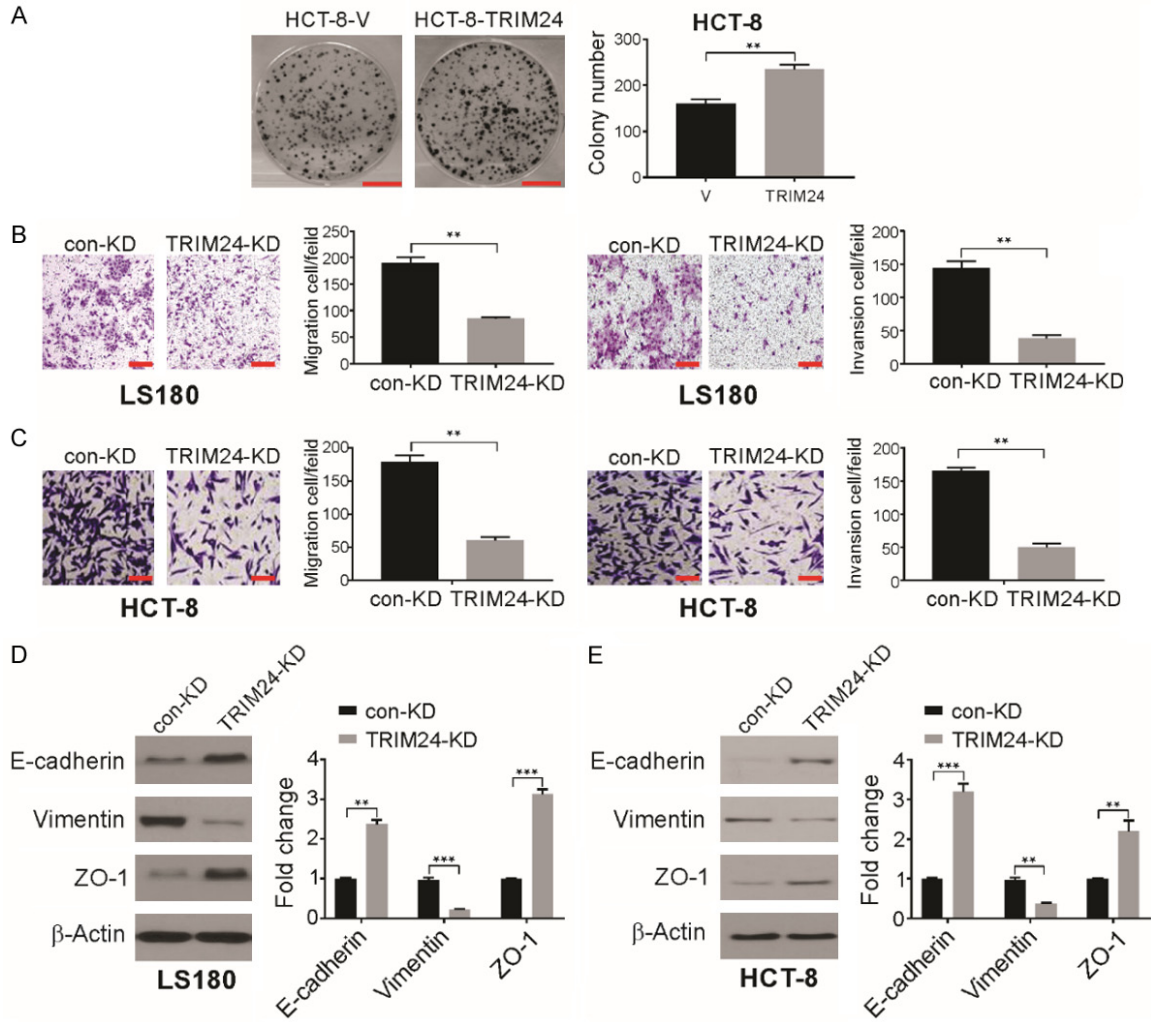


Figure S1. A. Colony forming abilities of HCT-8 cells were analyzed following TRIM24 overexpression. Scale bar: 1 cm. B. LS180 cells were transfected with sh con or sh *TRIM24*, Cell migration (Left) and invasion (Right) were determined by Matrigel transwell assay. Scale bar: 50 μ m. C. HCT-8 cells were transfected with sh con or sh *TRIM24*, and cell migration (Left) and invasion (Right) were determined by Matrigel transwell assay. Scale bar: 50 μ m. D. LS180 cells were transfected with sh con or sh *TRIM24*. The indicated protein level was detected by western blotting and normalized to β -actin. E. HCT-8 cells were transfected with sh con or sh *TRIM24*. The indicated protein level was detected by western blotting and normalized to β -actin.

Role of TRIM24 in CRC

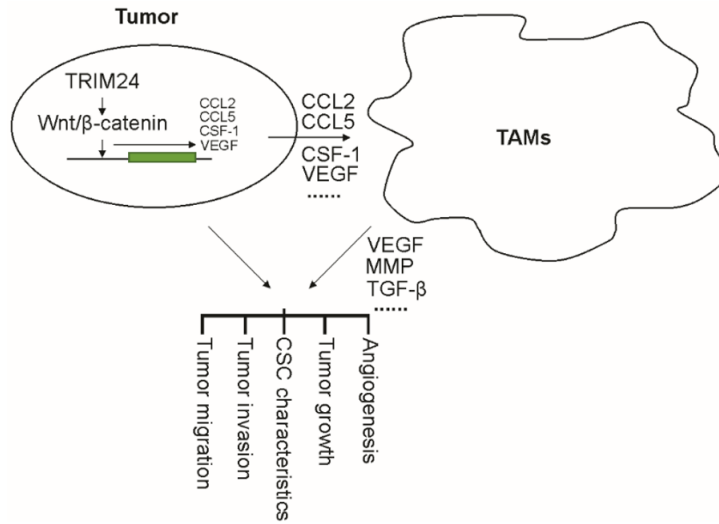


Figure S2. A. Mode for oncogenic activities of TRIM24. TRIM24 overexpression promotes expression and release of CCL2, CCL5, CSF-1, VEGF etc. through the Wnt/β-catenin signaling pathway. TAMs were recruited into tumor microenvironment and play a key role in promoting tumor angiogenesis, growth, invasion, migration and CSC characteristics.

Figure 1E

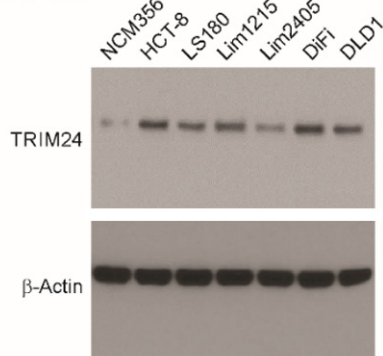


Figure 2F

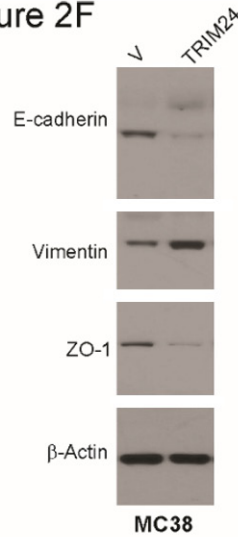


Figure 2G

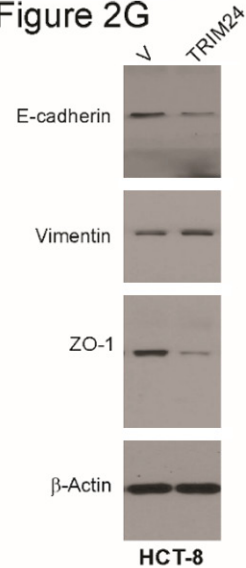


Figure 3C

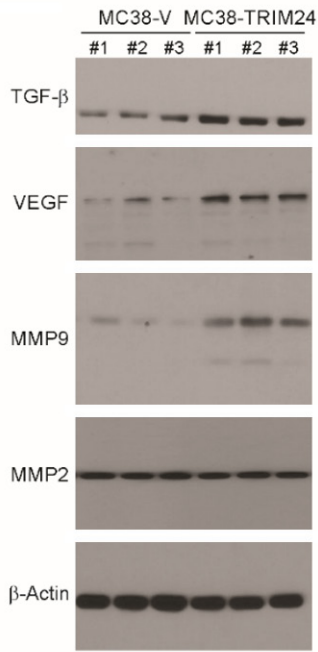


Figure 3E

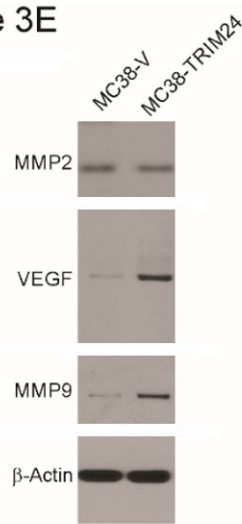


Figure 4A

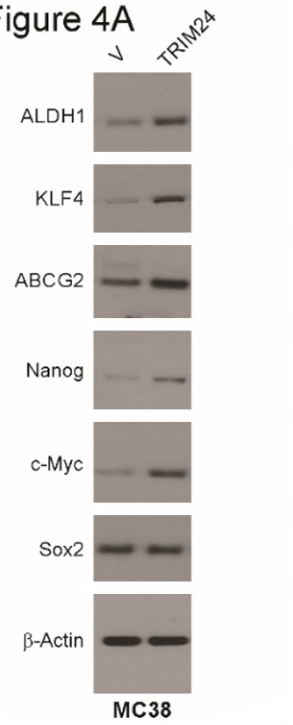


Figure 5A

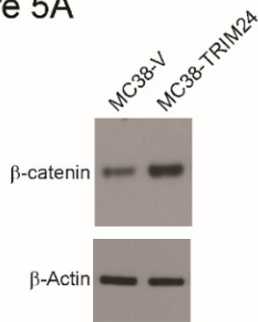


Figure 5C

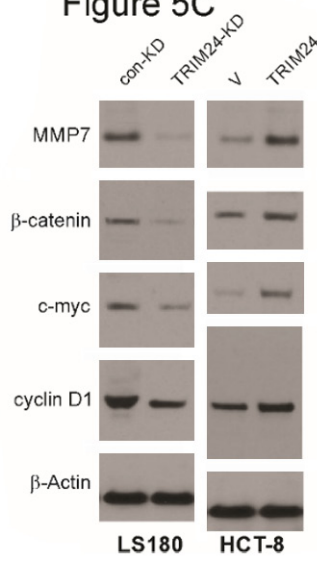


Figure 5D

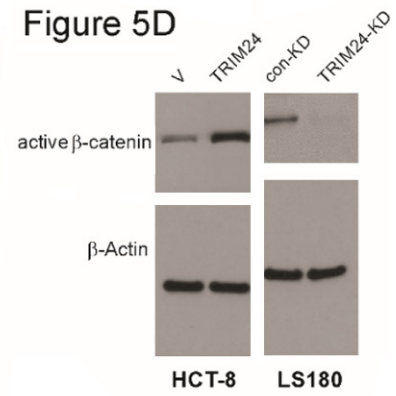


Figure S3. Uncropped western blot images.

Figure 6D

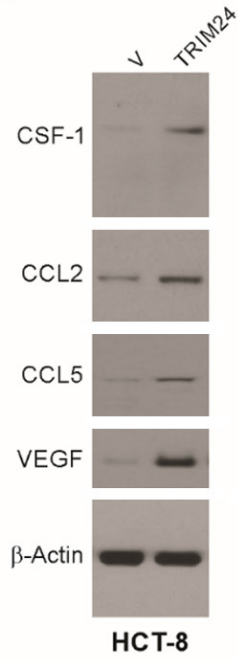


Figure 6F

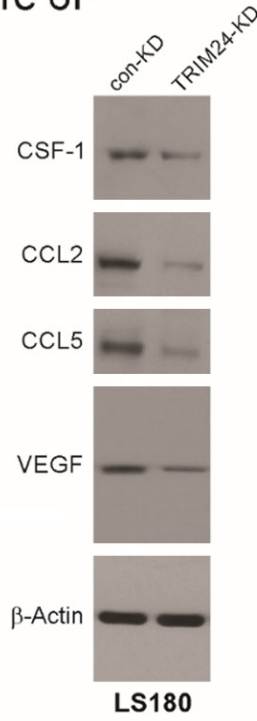


Figure 6H

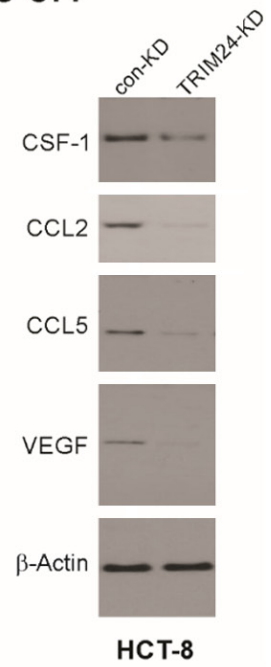


Figure S1D

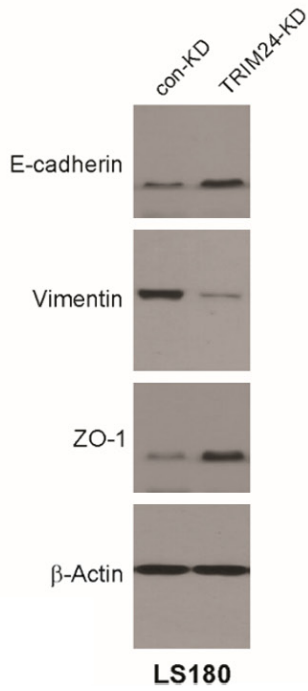


Figure S1E

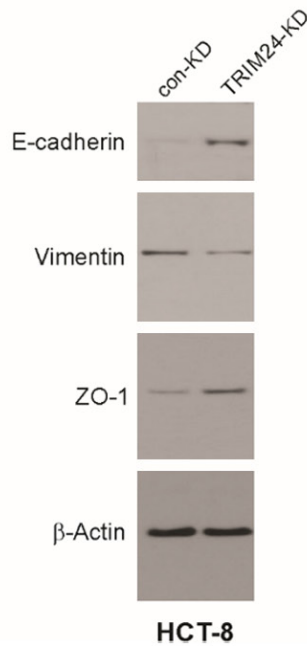


Figure S4. Uncropped western blot images.