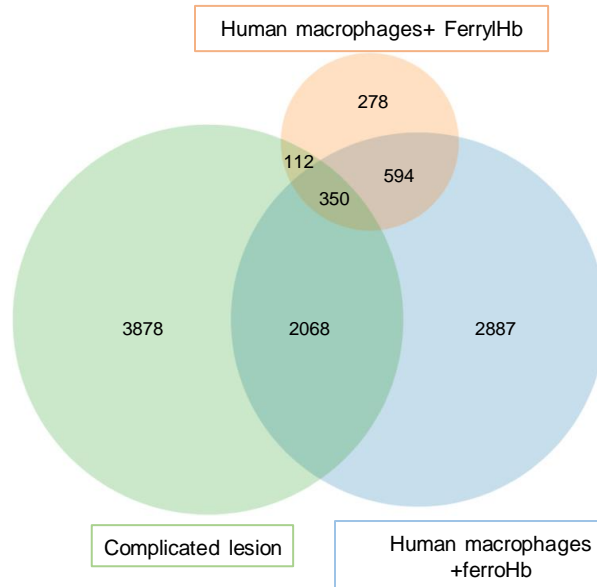
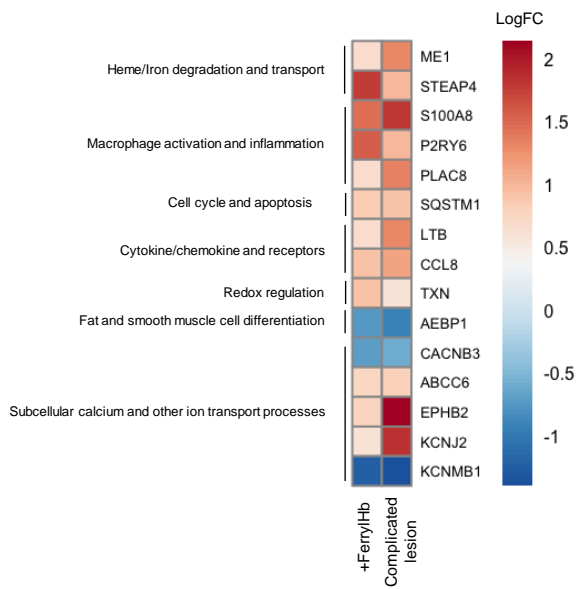


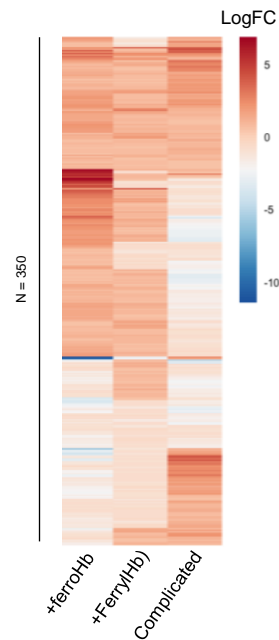
A



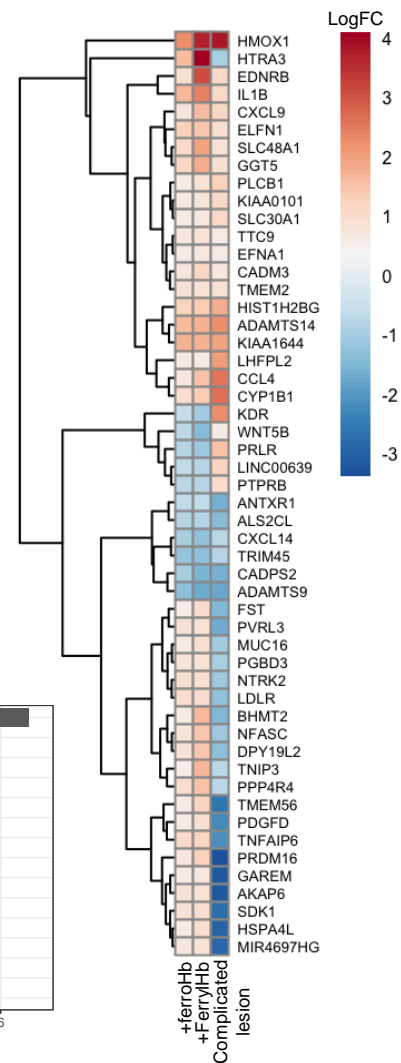
B



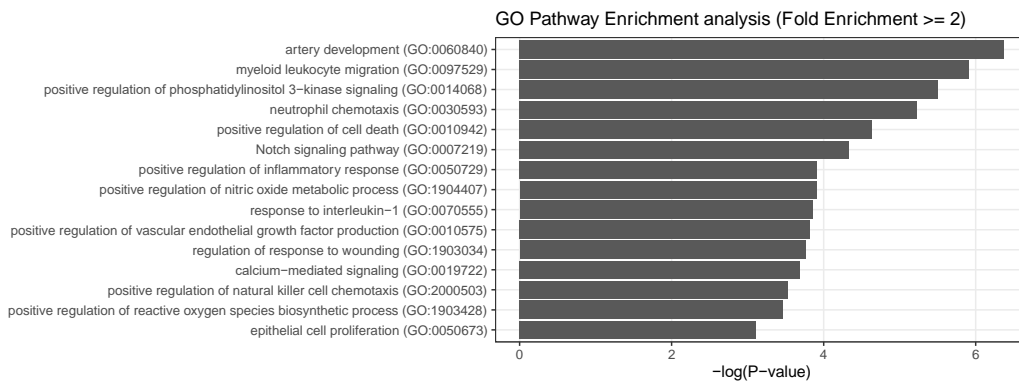
C



D



E



## **SUPPLEMENTARY FIGURE 13. COMPARATIVE ANALYSIS BETWEEN COMPLICATED LESIONS AND HUMAN MACROPHAGES EXPOSED TO HEMOGLOBIN OR FERRYL HEMOGLOBIN (RELATED TO MAIN FIGURE 15)**

(A) Venn diagram depicting number of genes differentially expressed by each group analyzed. Green circle refers to the number of DE genes in complicated lesions vs healthy samples. Blue circle is associated with the number of DE genes in human macrophages treated with Hb for 8 hours and orange refers to the number of DE genes in human macrophages treated with ferrylHb for 8 hours. (B) Heatmap representation of gene changes belonging to the ferrylHb exclusively regulated and overlapping gene set (112 genes) from the Venn diagram. Gene changes levels are displayed as  $\log_{10}$  (fold change over control for ferrylHb treatment and healthy biopsies for the complicated lesion comparison). (C) and (D) Heatmap representation of gene changes belonging to the commonly regulated and overlapping gene set (350 genes) from the Venn diagram in Fig. 12A. Gene changes levels are displayed as  $\log_{10}$  (fold change over control for ferrylHb and Hb treatment and healthy biopsies for the complicated lesion comparison). (E) GO pathway enrichment analysis on common overlapping DE genes in complicated lesions when compared to healthy donors, and human macrophages treated with ferrylHb or Hb compared to control. Top pathways are shown with at least 2-fold enrichment and ranked based on  $-\log(p\text{-value})$ .