

Supplementary Online Content

Fakih M, Sandhu J, Wang C, et al. Evaluation of comparative surveillance strategies of circulating tumor DNA, imaging, and carcinoembryonic antigen levels in patients with resected colorectal cancer. *JAMA Netw Open*. 2022;5(3):e221093.
doi:10.1001/jamanetworkopen.2022.1093

eFigure 1. Study Flow Diagram

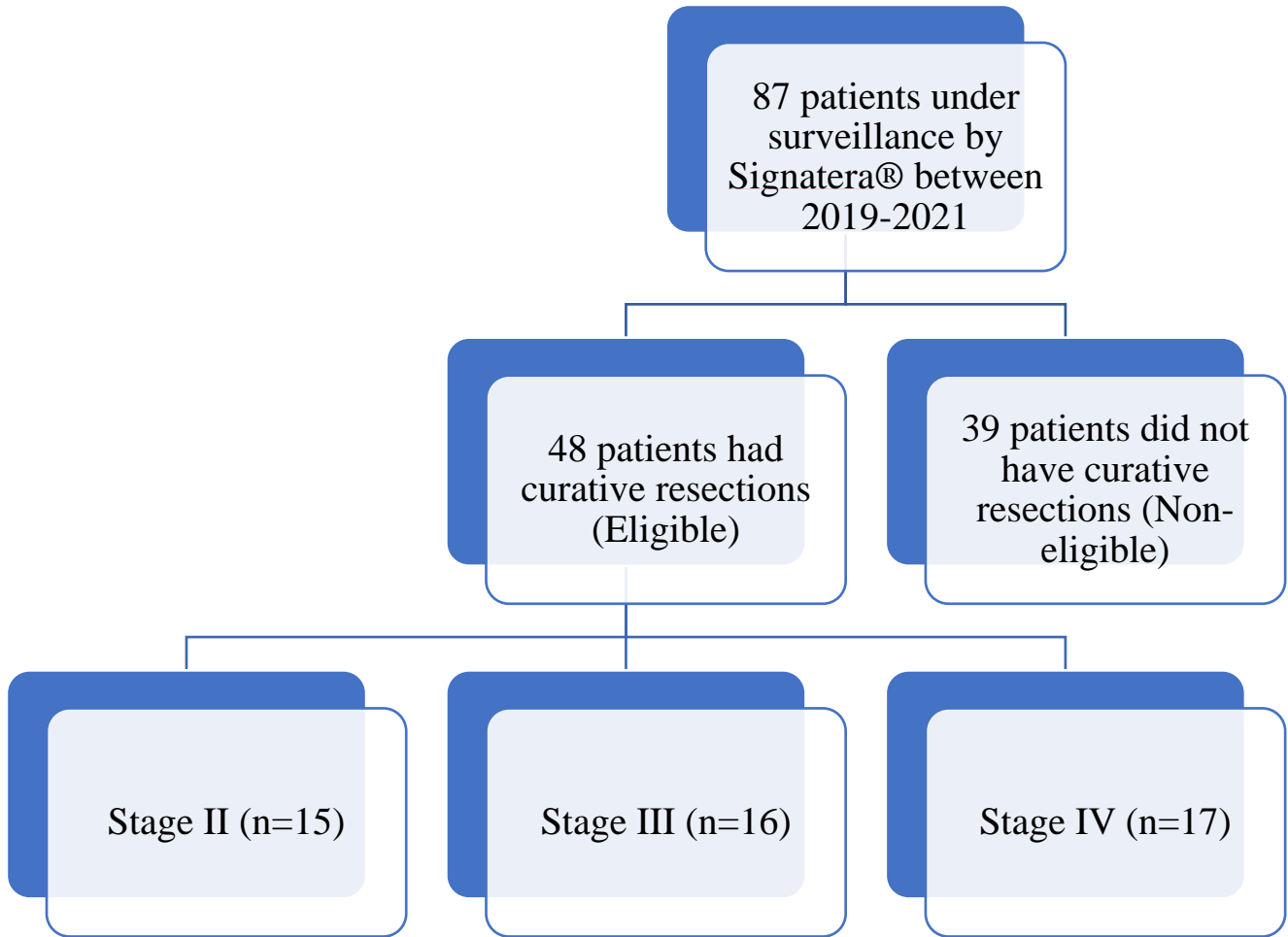
eFigure 2. Images From Patients With Lung Recurrence With Negative ctDNA Findings

eFigure 3. Images From Patients With Persistent ctDNA Positivity and With Delayed Radiographic Disease Recurrence

eTable. Sensitivity, Specificity, PPV, and NPV for ctDNA, Imaging, and CEA Levels

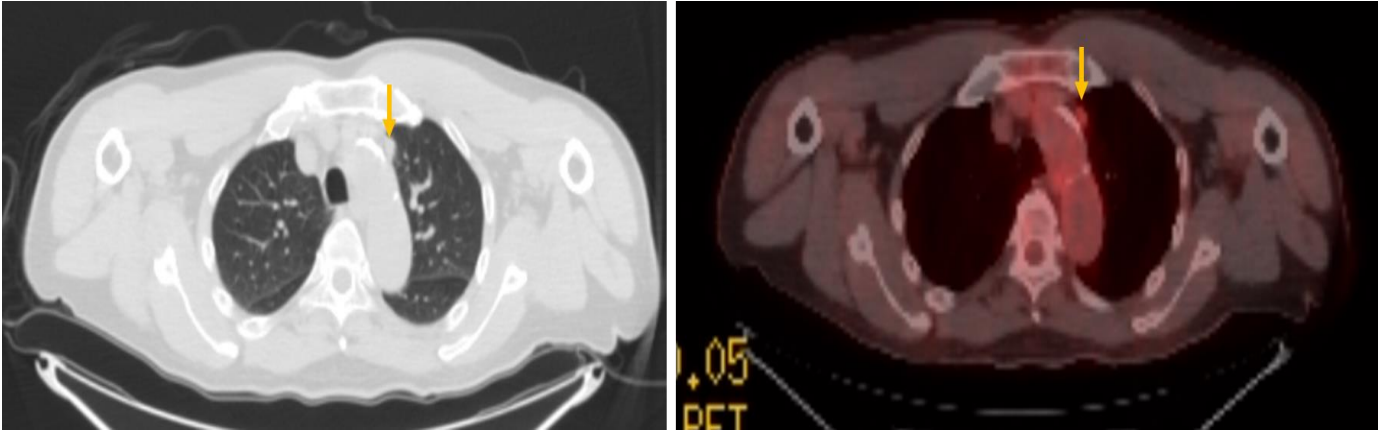
This supplementary material has been provided by the authors to give readers additional information about their work.

eFigure 1. Study Flow Diagram

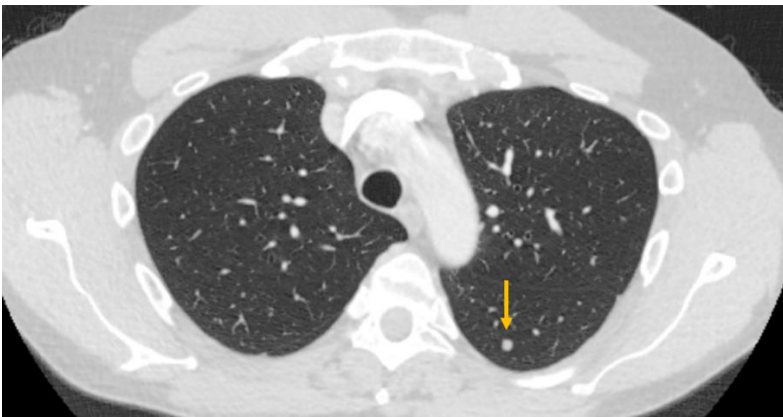


eFigure 2. Images From Patients With Lung Recurrence With Negative ctDNA Findings

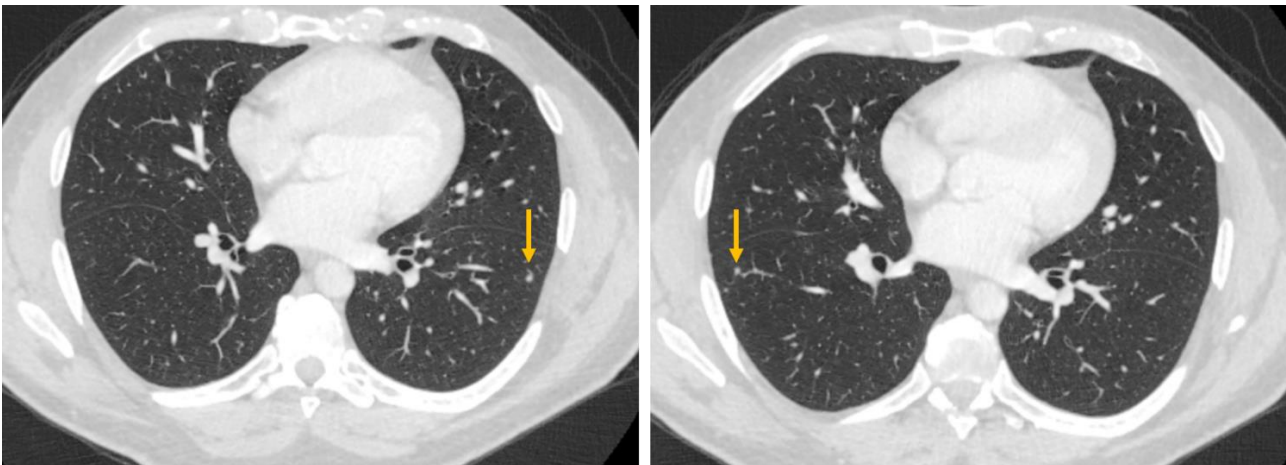
Case 1: A medial left upper lobe lesion that was subsequently resected confirming metastatic colorectal cancer



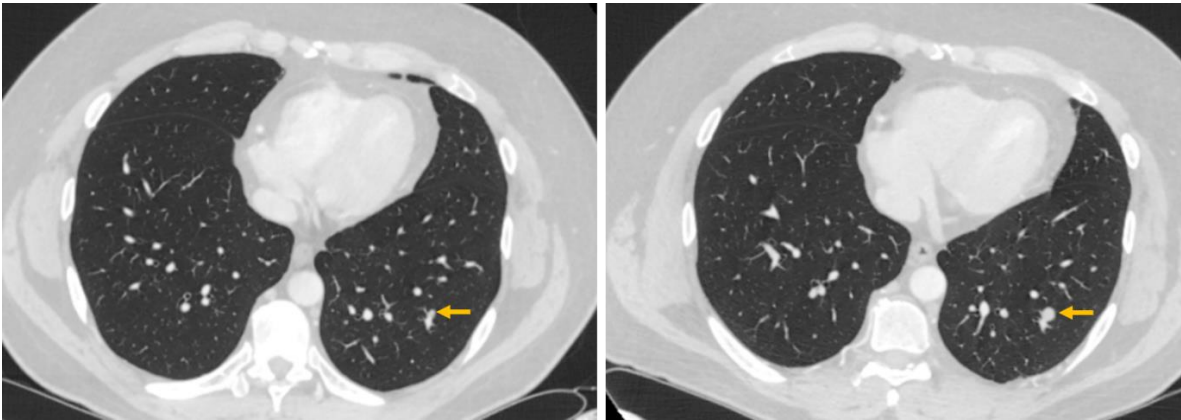
Case 2: Multiple lung nodules that one of which (included in image) was subsequently resected confirming metastatic colorectal cancer



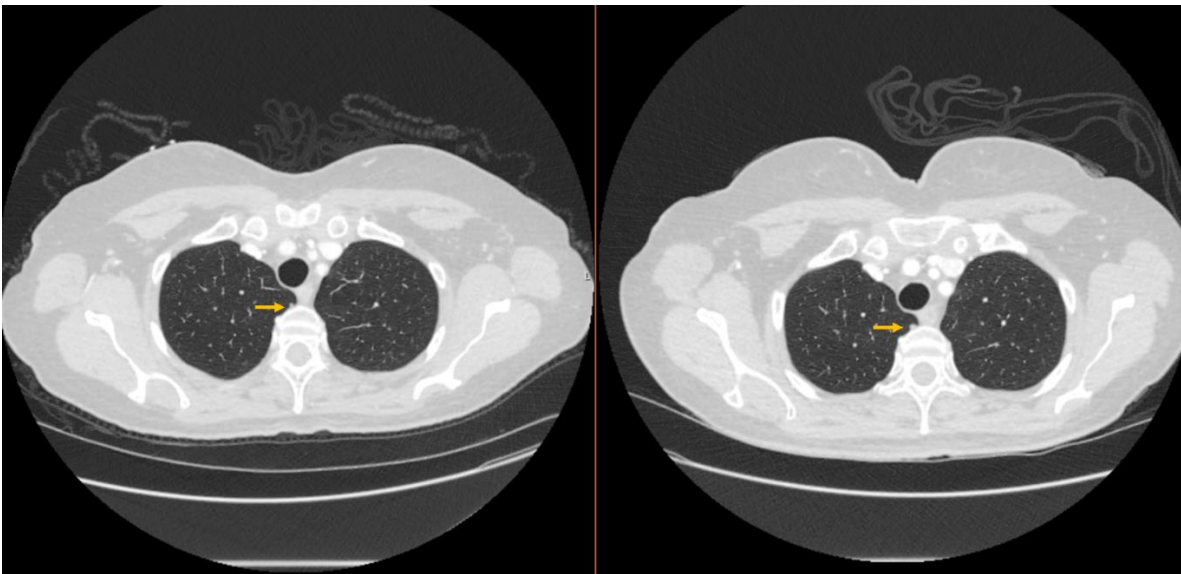
Case 3: Multiple lung nodules associated with a rise in CEA and subsequently resolved with chemotherapy



Case 4: Enlarging left lower lobe nodule over a period of 4 months. The lesion was treated with curative intent with stereotactic body radiation therapy

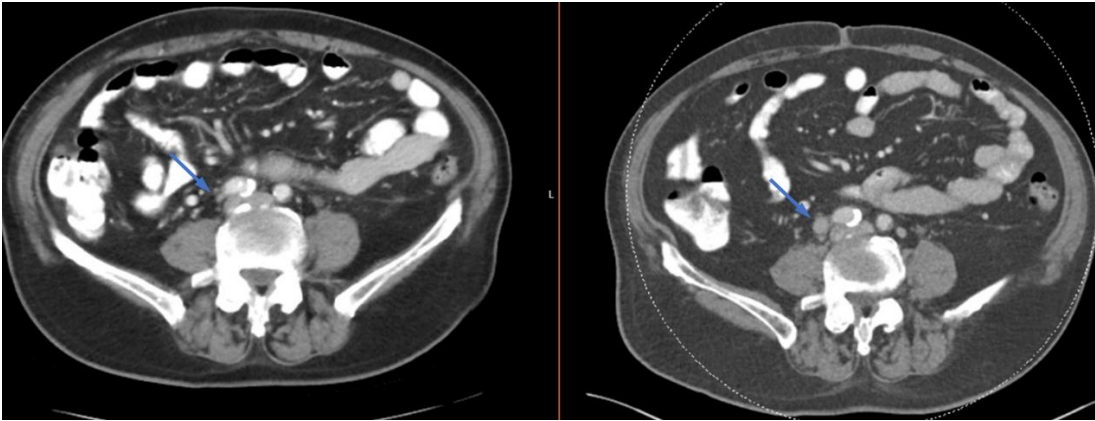


Case 5: Enlarging pleural base right upper lobe nodule over a period of 4 months. Resection confirmed metastatic colorectal cancer

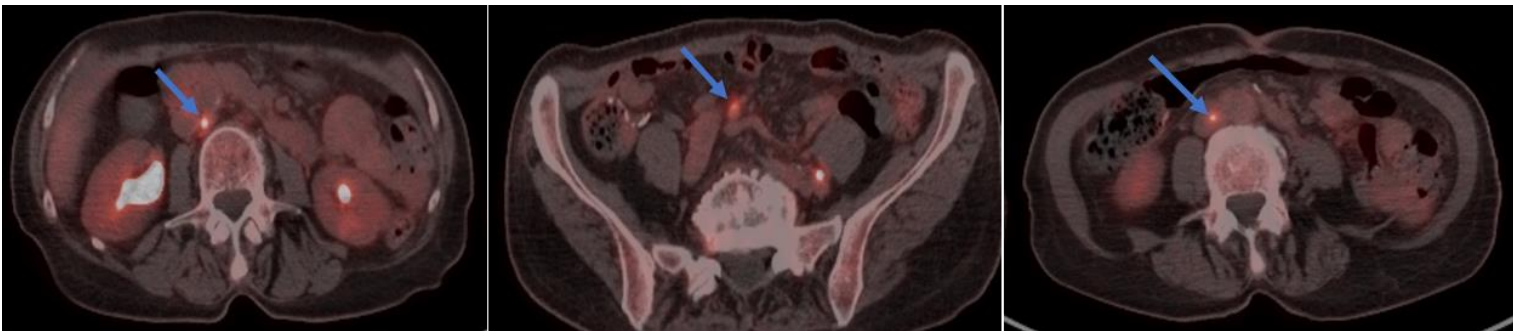


eFigure 3. Images From Patients With Persistent ctDNA Positivity and With Delayed Radiographic Disease Recurrence

Case 1: Increase in one of several retroperitoneal lymph nodes (blue arrow) confirmed on CT (right) compared to 6 months prior (left)



Case 2: Multiple newly FDG positive lymph nodes (blue arrow) noted on PET/CT



eTable. Sensitivity, Specificity, PPV, and NPV for ctDNA, Imaging, and CEA Levels

Stage	ctDNA %, (95% CI)			Imaging %, (95% CI)			CEA %, (95% CI)			Imaging or CEA %, (95% CI)		
	II-III	IV	II-IV	II-III	IV	II-IV	II-III	IV	II-IV	II-III	IV	II-IV
Sensitivity	66.7, (24.1-94)	44.4, (15.3-77.3)	53.3, (27.4-77.7)	33.3, (6-75.9)	77.8, (40.2-96.1)	60, (32.9-82.5)	33.3, (6-75.9)	11.1, (0.6-49.3)	20.0, (5.3-48.6)	66.7, (24.1-94)	77.8, (40.2-96.1)	73.3, (44.8-91.1)
Specificity	100, (83.4-100)	100, (59.8, 100)	100, (87-100)	96, (77.7-99.8)	100, (59.8-100)	96.9, (82.5-99.8)	88, (67.7-96.8)	100, (59.8-100)	90.9, (74.5-97.6)	84, (63.1-94.7)	100, (59.8-100)	87.9, (70.9-96)
PPV	100, (39.6-100)	100, (39.6, 100)	100, (59.8-100)	66.7, (12.5-98.2)	100, (56.1-100)	90, (54.1-99.5)	40, (7-83)	100, (5.5-100)	50, (13.9-86.1)	55.6, (17.4-82.6)	100, (56.1-100)	73.3, (44.8-91.1)
NPV	92.6, (74.2-98.7)	61.5, (32.3-84.9)	82.5, (66.6-92.1)	85.7, (66.4-95.3)	80, (44.2-96.5)	84.2, (68.1-93.4)	84.6, (64.3-95)	50, (25.5-74.5)	71.4, (55.2-83.8)	91.3, (70.5-98.5)	80, (44.2-96.5)	87.9, (70.9-96)