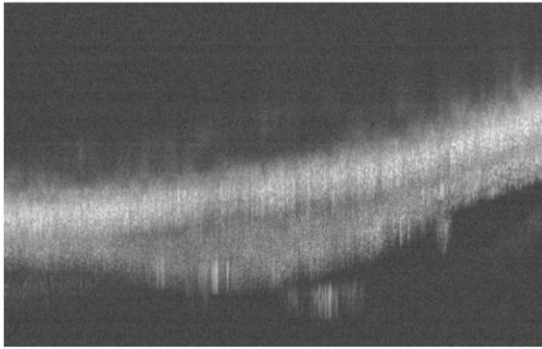
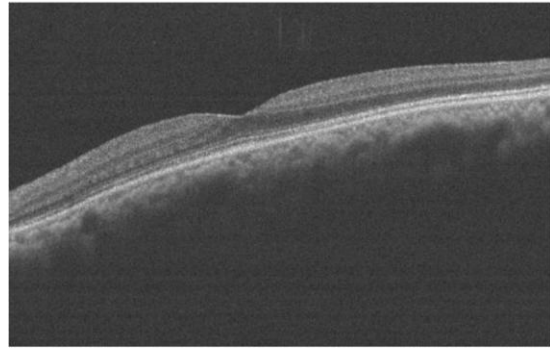


A



OD

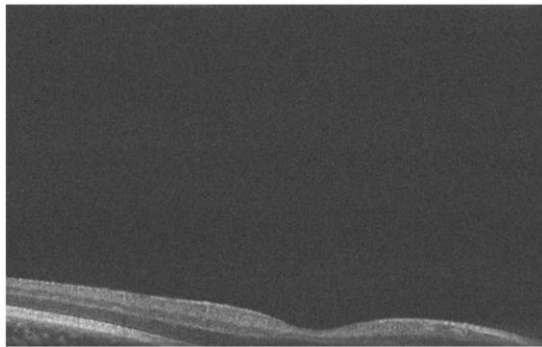
Poor imaging quality that require rescan



OS

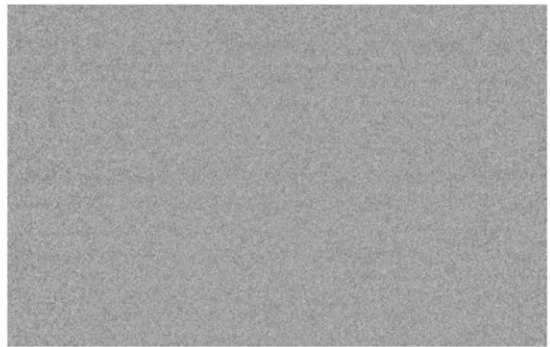
Normal No pathologies detected in macular region

B



OD

Poor imaging quality that require rescan



OS

Poor imaging quality that require rescan

Figure Supplement 1. Examples of poor imaging quality. (A) Poor quality OCT images of the right eye, and (B) the images of both eyes are poor quality.