

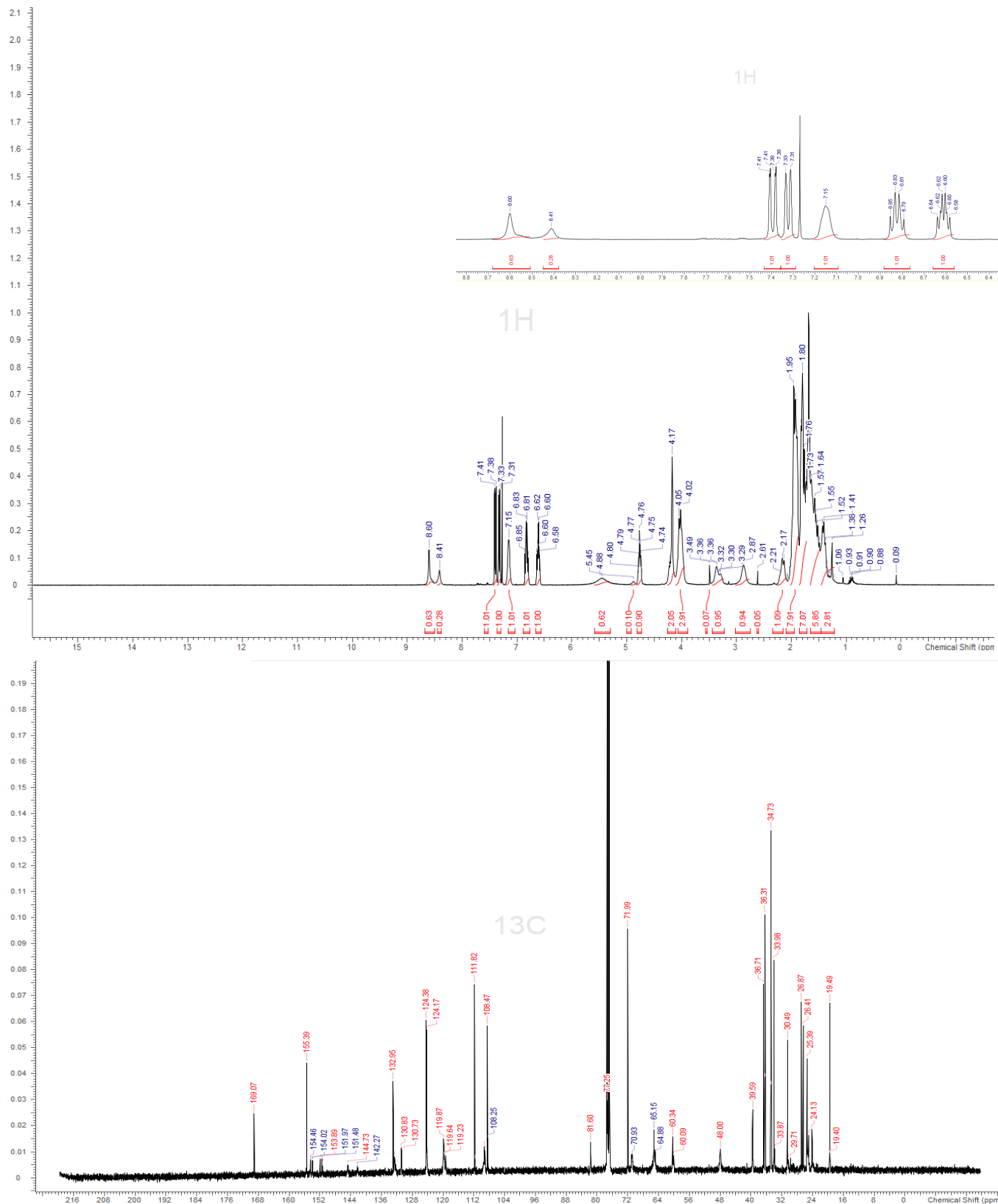
Supplementary Information for

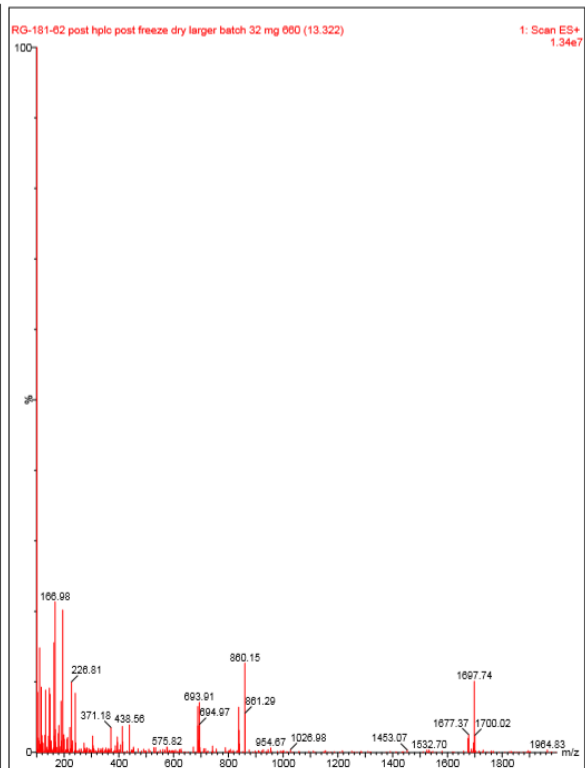
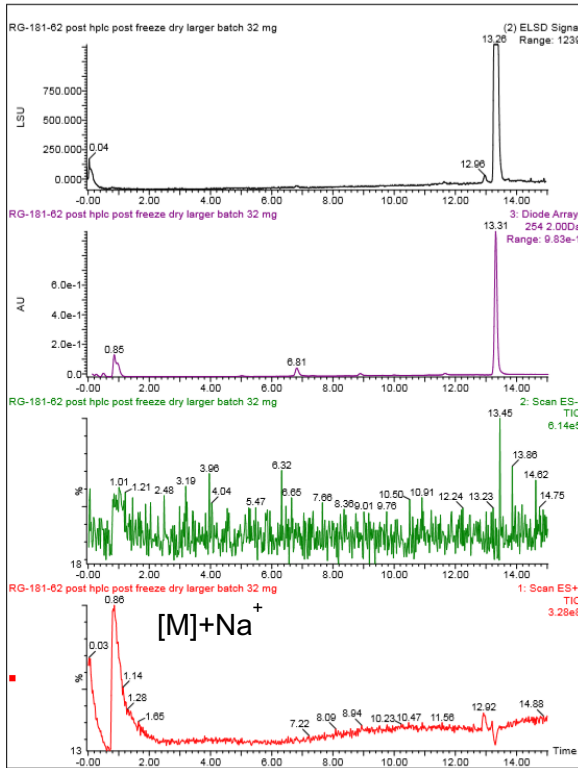
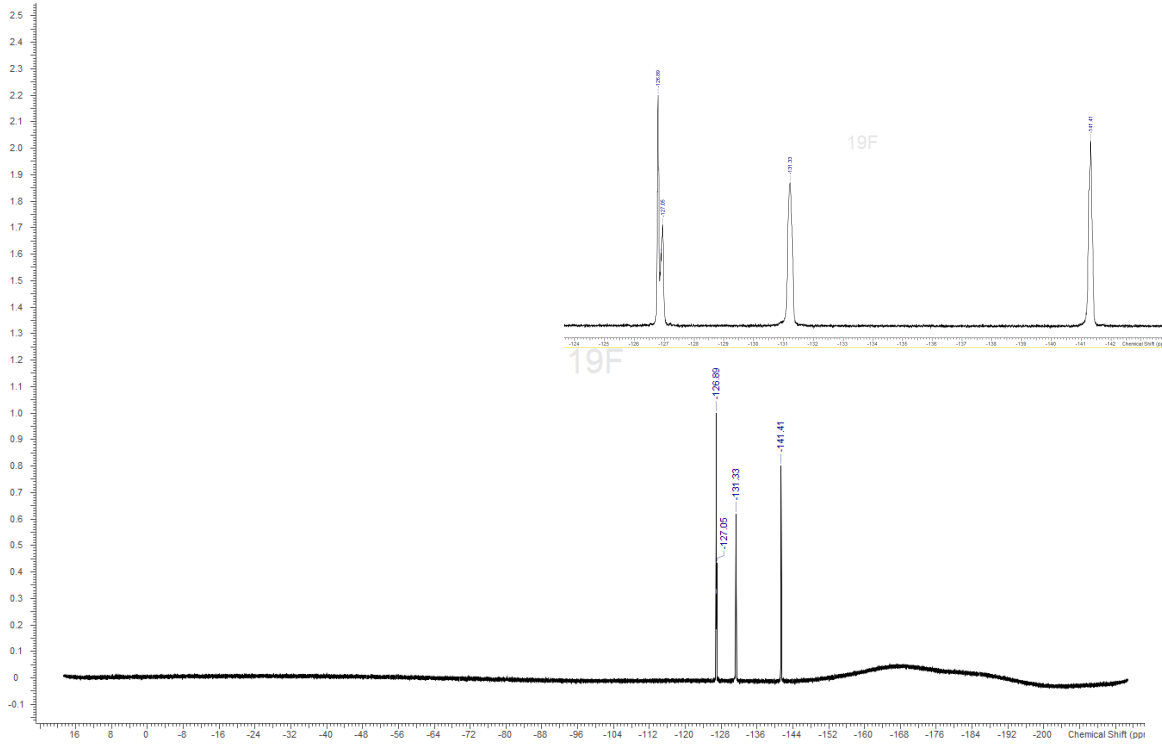
**Exploiting KRAS-driven Ferroaddiction in Cancer Through
Ferrous Iron-Activatable Drug Conjugates (FeADC)**

Table of Contents

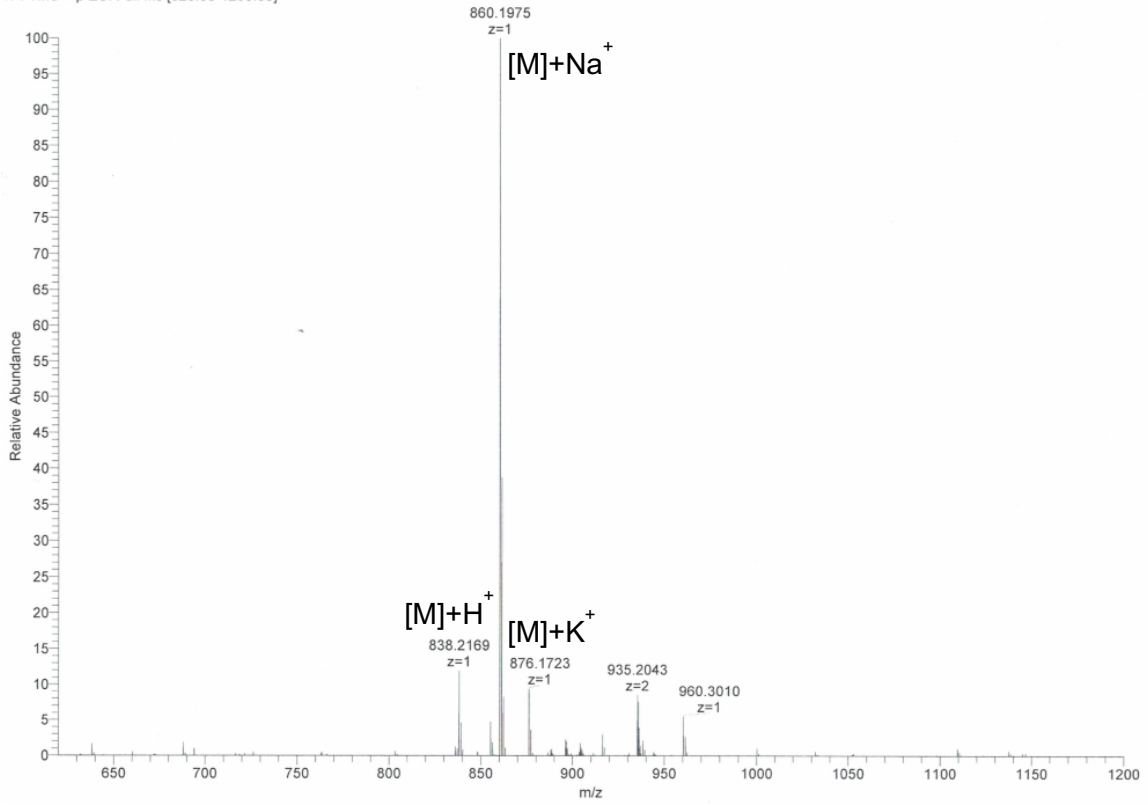
Scans of NMR, HMRS Spectra and LC/MS Chromatograms.....2

¹H, ¹³C NMR, ¹⁹F, LCMS and HRMS data for (1''R, 3''R) TRX-COBI

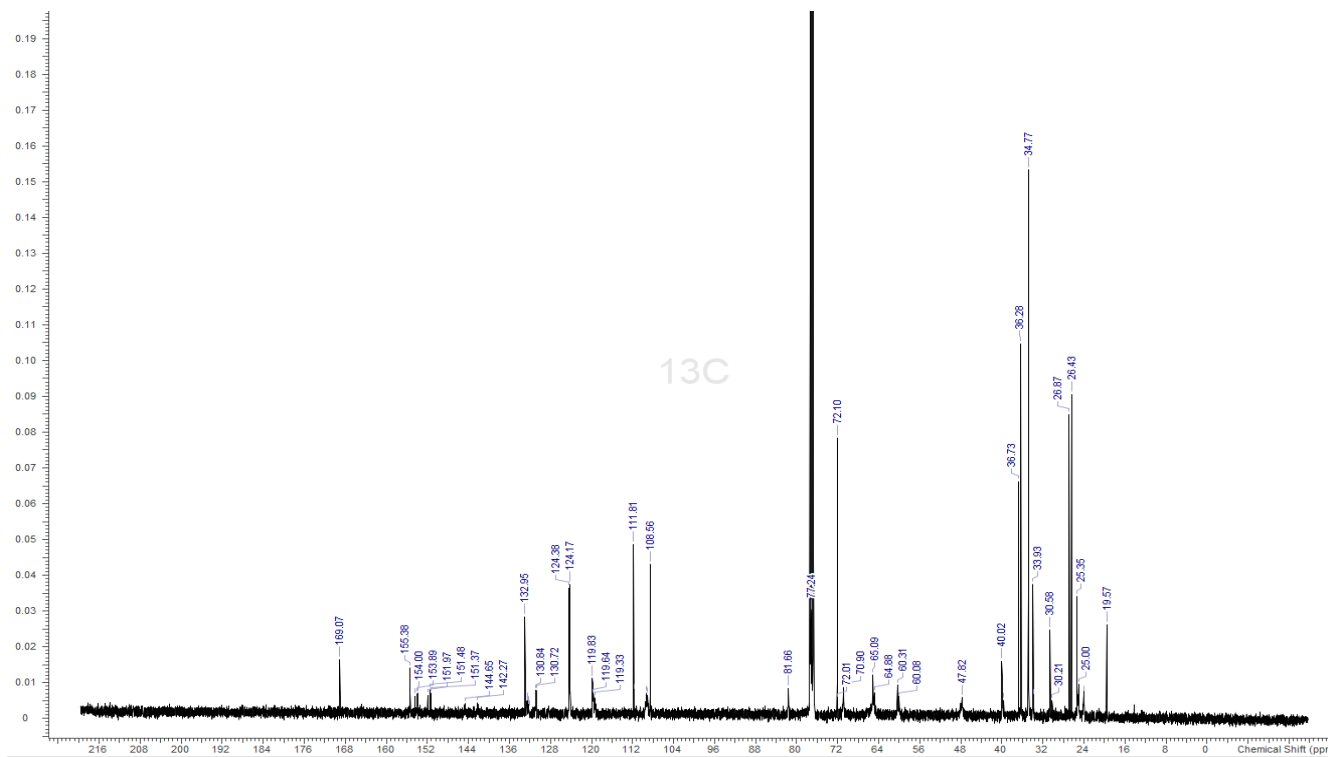
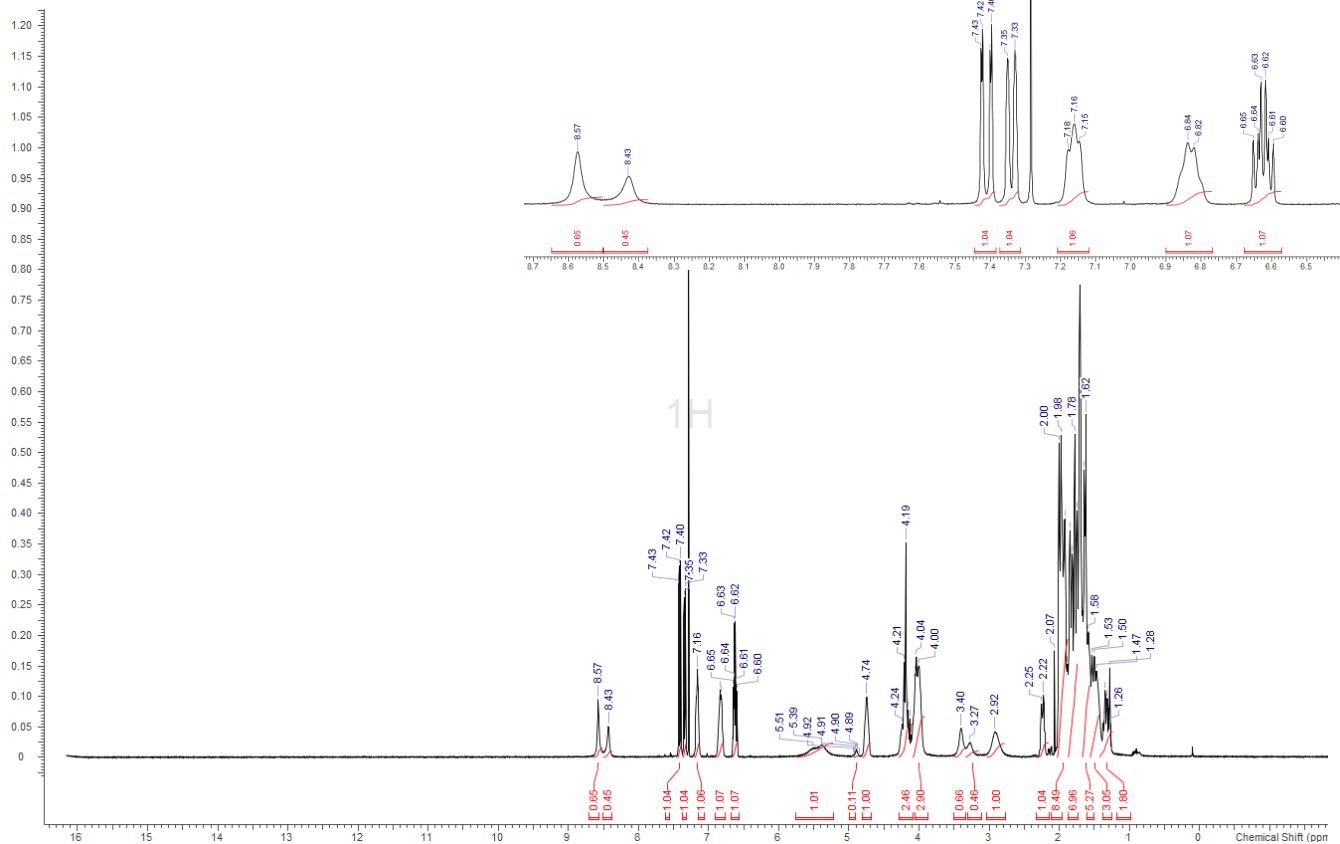


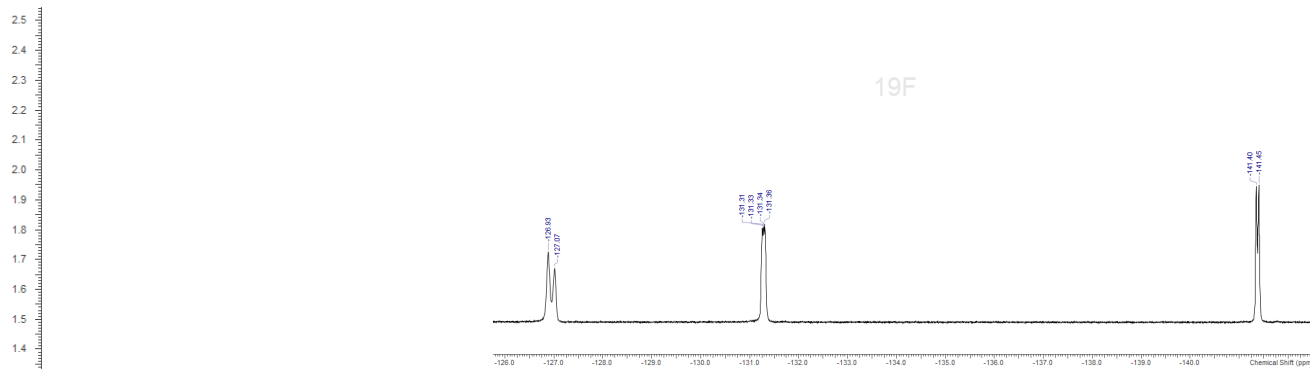


LFT19604 #1-57 RT: 0.01-0.99 AV: 57 NL: 2.33E5
T: FTMS + p ESI Full ms [620.00-1200.00]

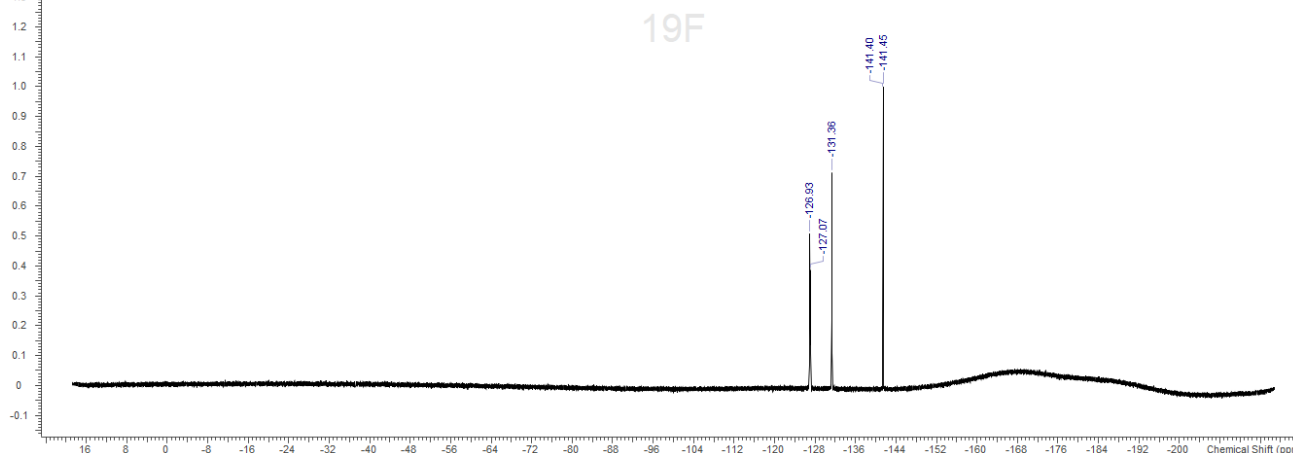


^1H , ^{13}C NMR, ^{19}F , LCMS, and HRMS data for (1''S, 3''S) TRX-COBI





11



LFT19602 #1-53 RT: 0.01-1.00 AV: 53 NL: 1.66E5
T: FTMS + p ESI Full ms [550.00-1100.00]

