

Figure S4

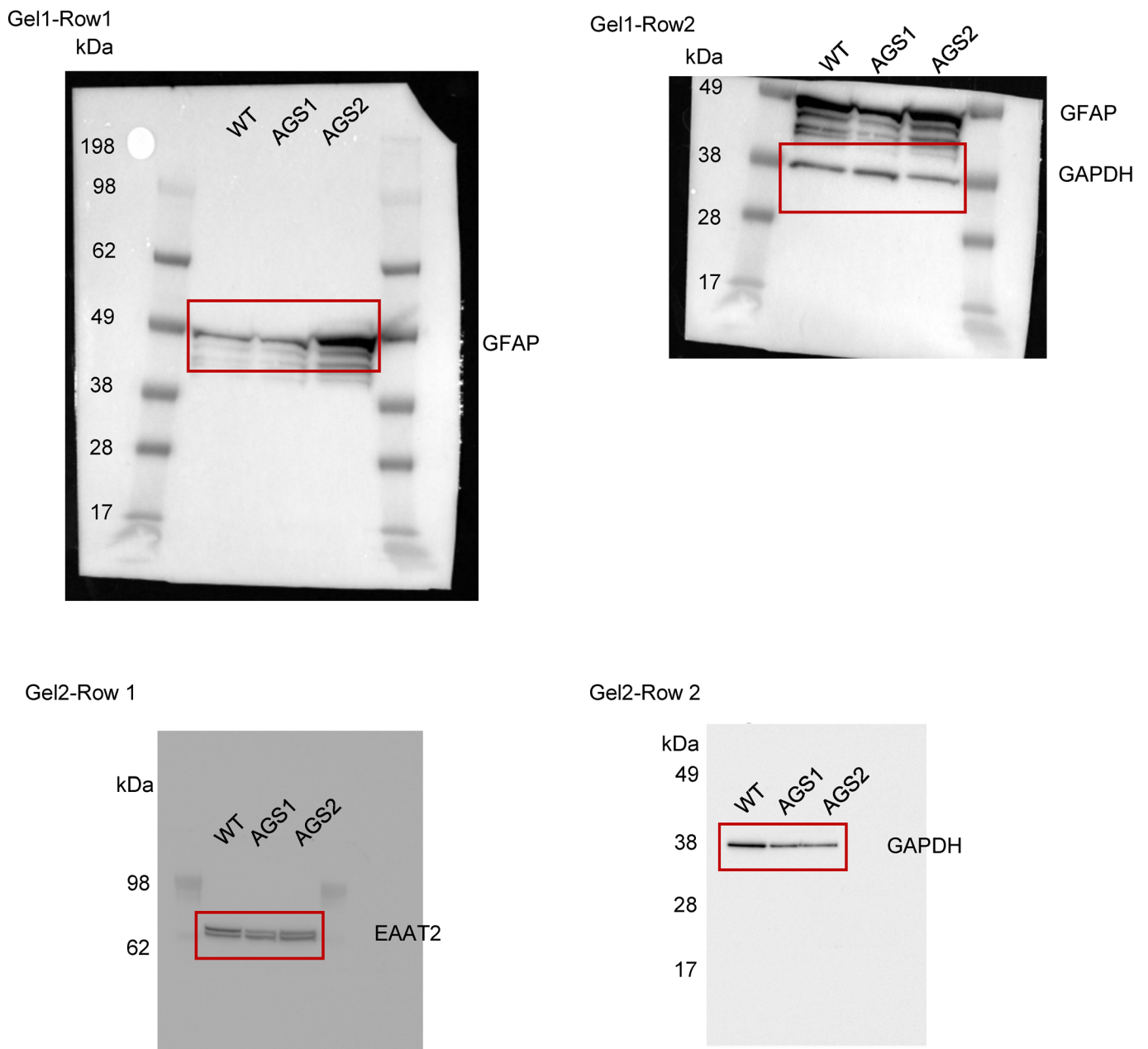


Figure S4. AGS patient-derived efficiently differentiate into pro-inflammatory astrocytes Expression of the astrocyte markers GFAP (Gel1-Row1) and EAAT2 (Gel2-Row1) by WB normalized on GADPH (Gel1-Row2 and Gel2-Row2) levels of iPSC-derived proinflammatory astrocytes at passage 1.