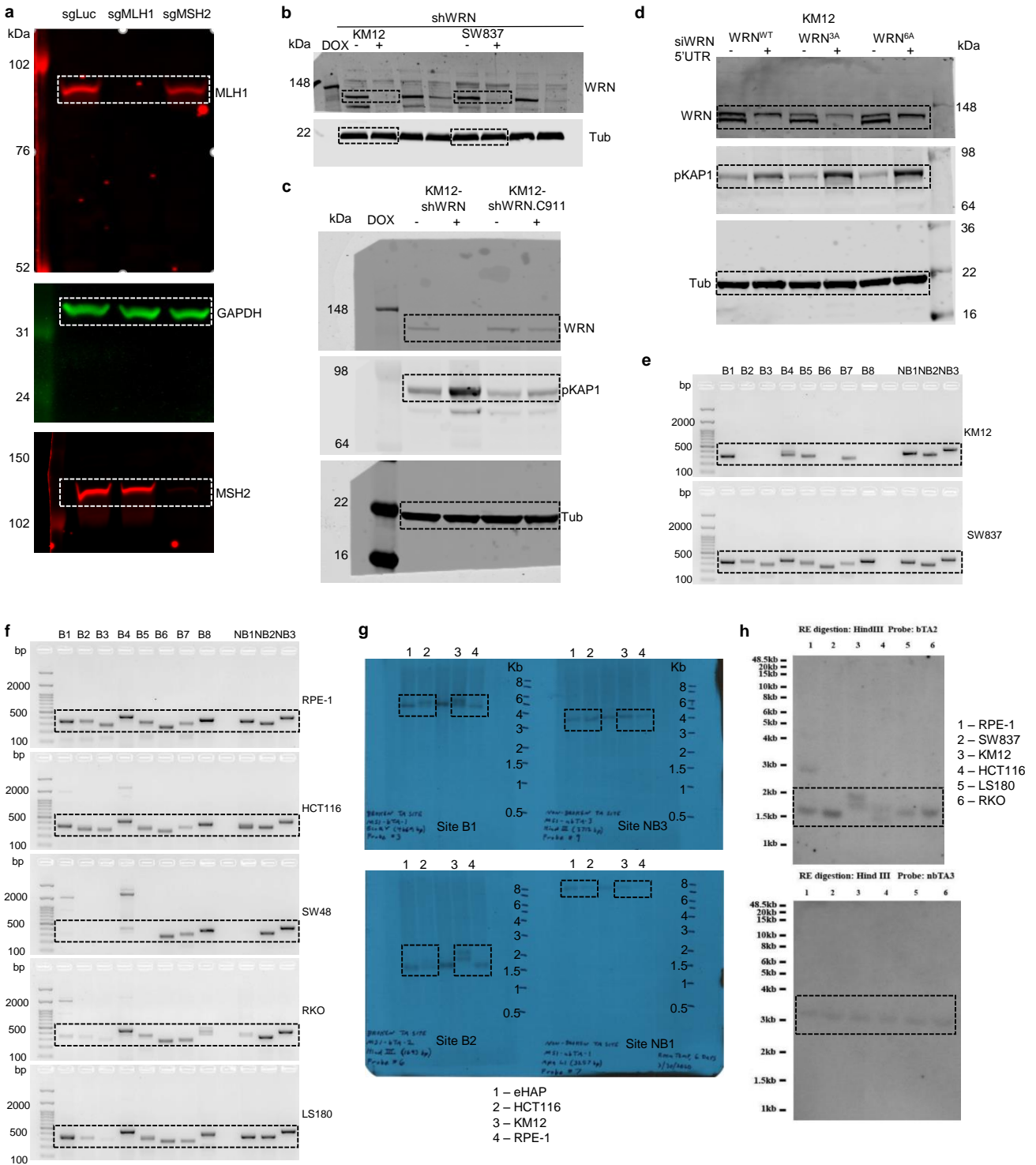


Supplementary Figure 1



Supplementary Figure 1 | Source Data Gels. **a**, Blots corresponding to Western blots shown in Extended Data Fig. 1a. Cell lysates are indicated above the blots, size markers indicated on the left, antibodies used for probing on the right. MLH1 and GAPDH blots came from the same gel, MSH2 blot came from a separate gel using the same amount of lysates. Dashed boxes indicated image areas shown in the figure. **b**, Blots corresponding to Western blots shown in Extended Data Fig. 1e. Cell lysates are indicated above the blots, size markers indicated on the left, antibodies used for probing on the right. Both blots came from the same gel. Dashed boxes indicated image areas shown in the figure. **c**, Blots corresponding to Western blots shown in Extended Data Fig. 1f. Cell lysates are indicated above the blots, size markers indicated on the left, antibodies used for probing on the right. All three blots came from the same gel. Dashed boxes indicated image areas shown in the figure. **d**, Blots corresponding to Western blots shown in Extended Data Fig. 5c. Cell lysates are indicated above the blots, size markers indicated on the left, antibodies used for probing on the left. All three blots came from the same gel. Dashed boxes indicated image areas shown in the figure. **e**, Agarose gels associated with Fig. 4a. Cell lines used for DNA extraction are shown on left, PCR product sites on top, and sizes of 100bp ladder are highlighted on the end. Dashed boxes indicated image areas shown in the figure. **f**, Agarose gels associated with Extended Data Fig. 6b. Cell lines used for DNA extraction are shown on left, PCR product sites on top, and sizes of 100bp ladder are highlighted on the end. Dashed boxes indicated image areas shown in the figure. **g**, Southern blots associated with Fig. 4d and Extended Data Fig. 7d. Cell lines used for DNA extraction and probed locations are indicated below blots, marker sizes on the right. Dashed boxes indicated image areas shown in the figure. **h**, Southern blots associated with Extended Data Fig. 7e. Cell lines used for DNA extraction are marked to the right, probed location above blots, marker sizes indicated on left. Dashed boxes indicated image areas shown in the figure.

Supplementary Table 1

Site	Chromosome	Coordinates		Hg19 size (bp)
B1	12	86,840,236	86,840,576	341
B2	4	148,254,330	148,254,641	312
B3	X	29,107,744	29,108,033	290
B4	11	55,170,807	55,171,175	369
B5	2	142,554,550	142,554,888	339
B6	12	114,570,575	114,570,895	321
B7	14	80,206,911	80,207,231	321
B8	2	84,459,189	84,459,559	371
NB1	12	69,931,840	69,932,189	350
NB2	10	36,271,804	36,272,140	337
NB3	9	86,767,464	86,767,891	428

Supplementary Table 1 | Genomic locations of PCR products. Coordinates of (TA)_n repeats and flanking sequences amplified during PCR probing, as shown in Fig. 4a and Extended Data Fig. 6b.