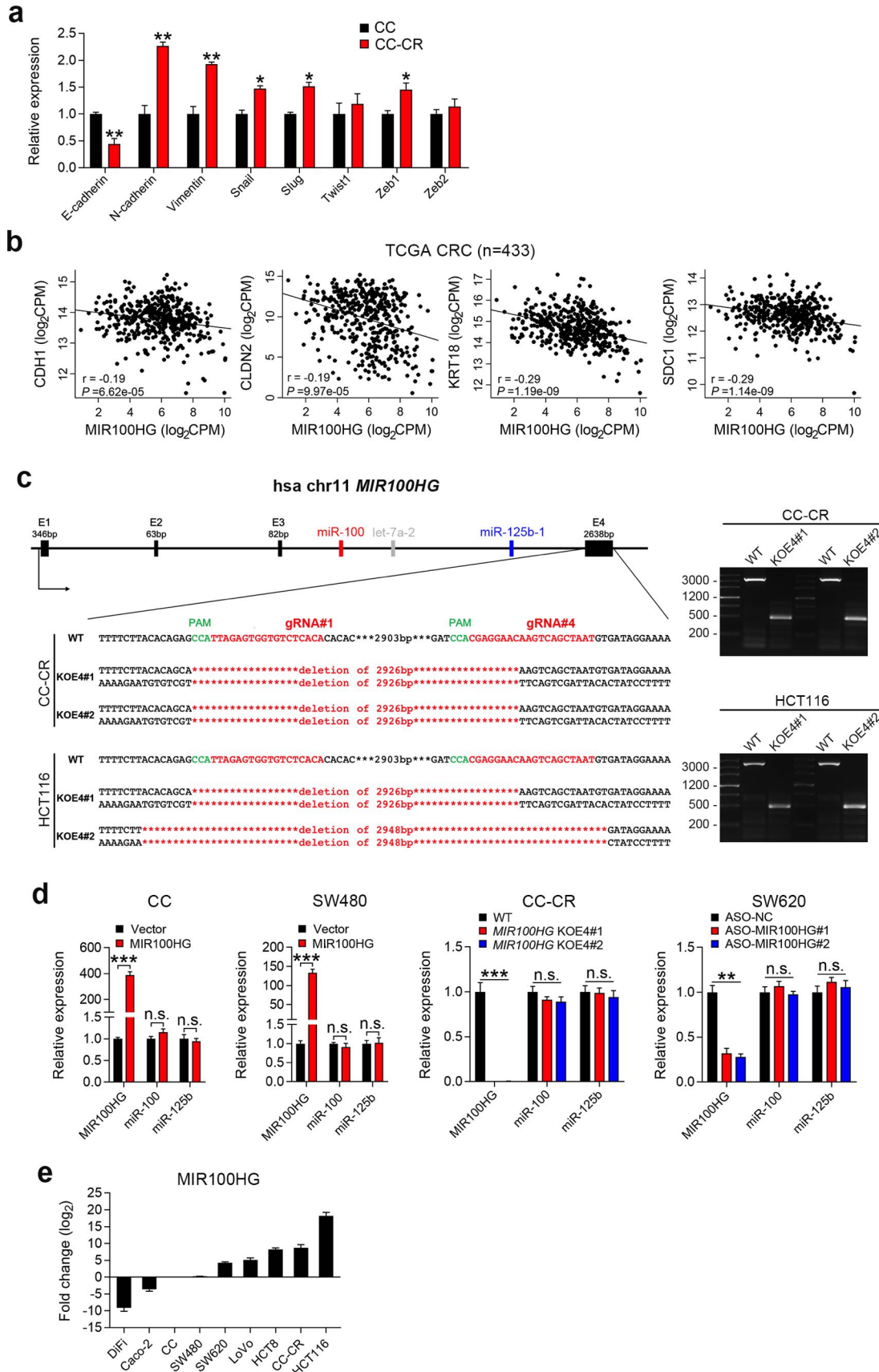
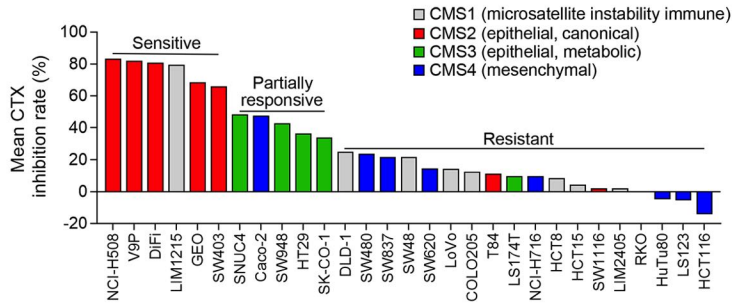


# Supplementary figure 1

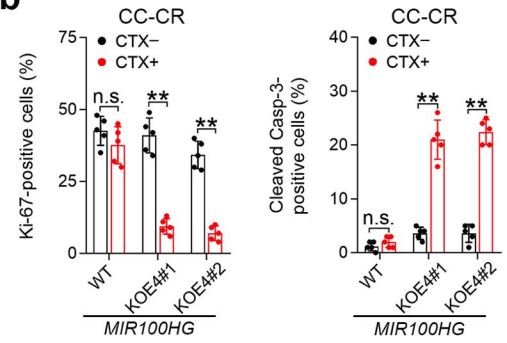


# Supplementary figure 2

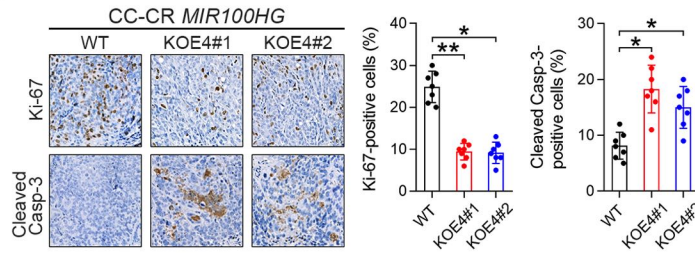
**a**



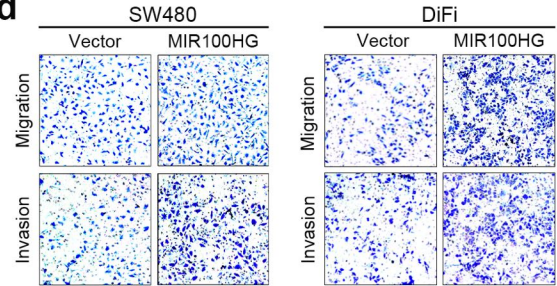
**b**



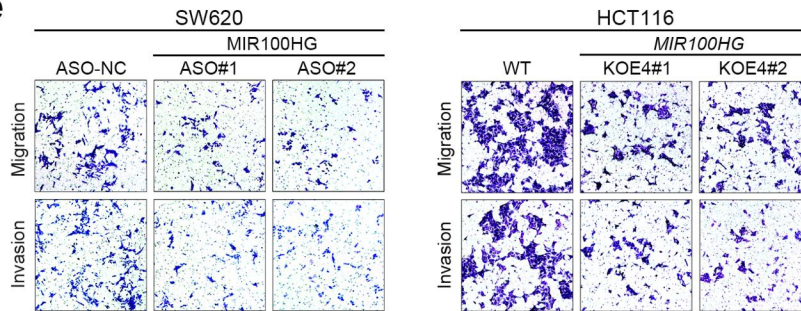
**c**



**d**



**e**



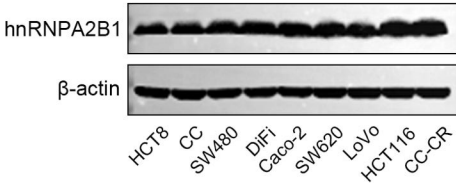
**f**

Incidence of lung metastasis in transplanted nude mice

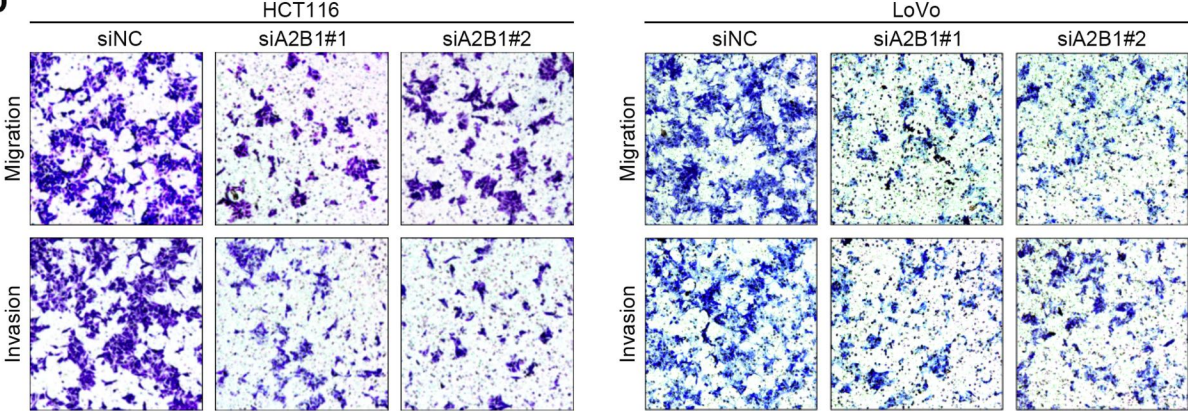
|                     | metastasis |
|---------------------|------------|
| SW620 shNC          | 8/10       |
| SW620 shMIR100HG#1  | 2/10       |
| SW620 shMIR100HG #2 | 3/10       |
| LoVo shNC           | 9/10       |
| LoVo shMIR100HG#1   | 3/10       |
| LoVo shMIR100HG#2   | 4/10       |

# Supplementary figure 3

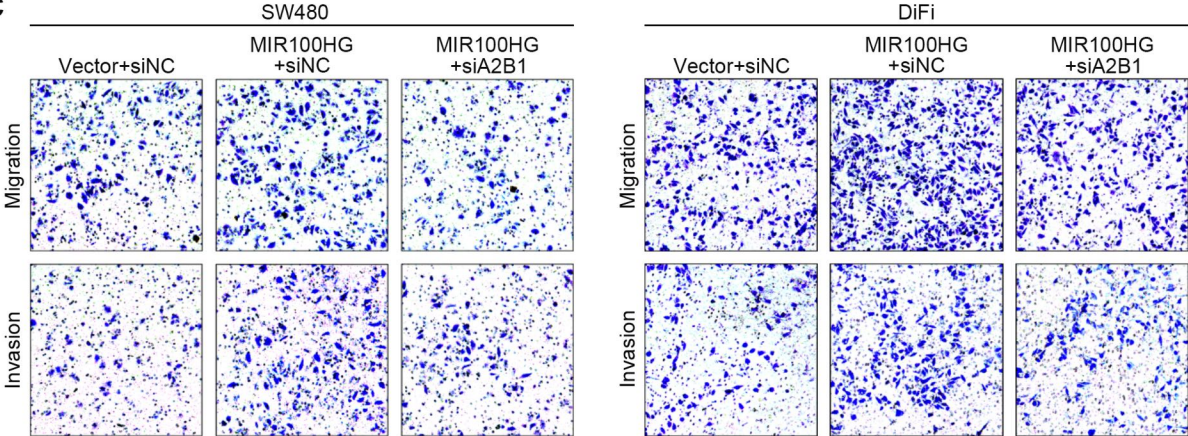
**a**



**b**

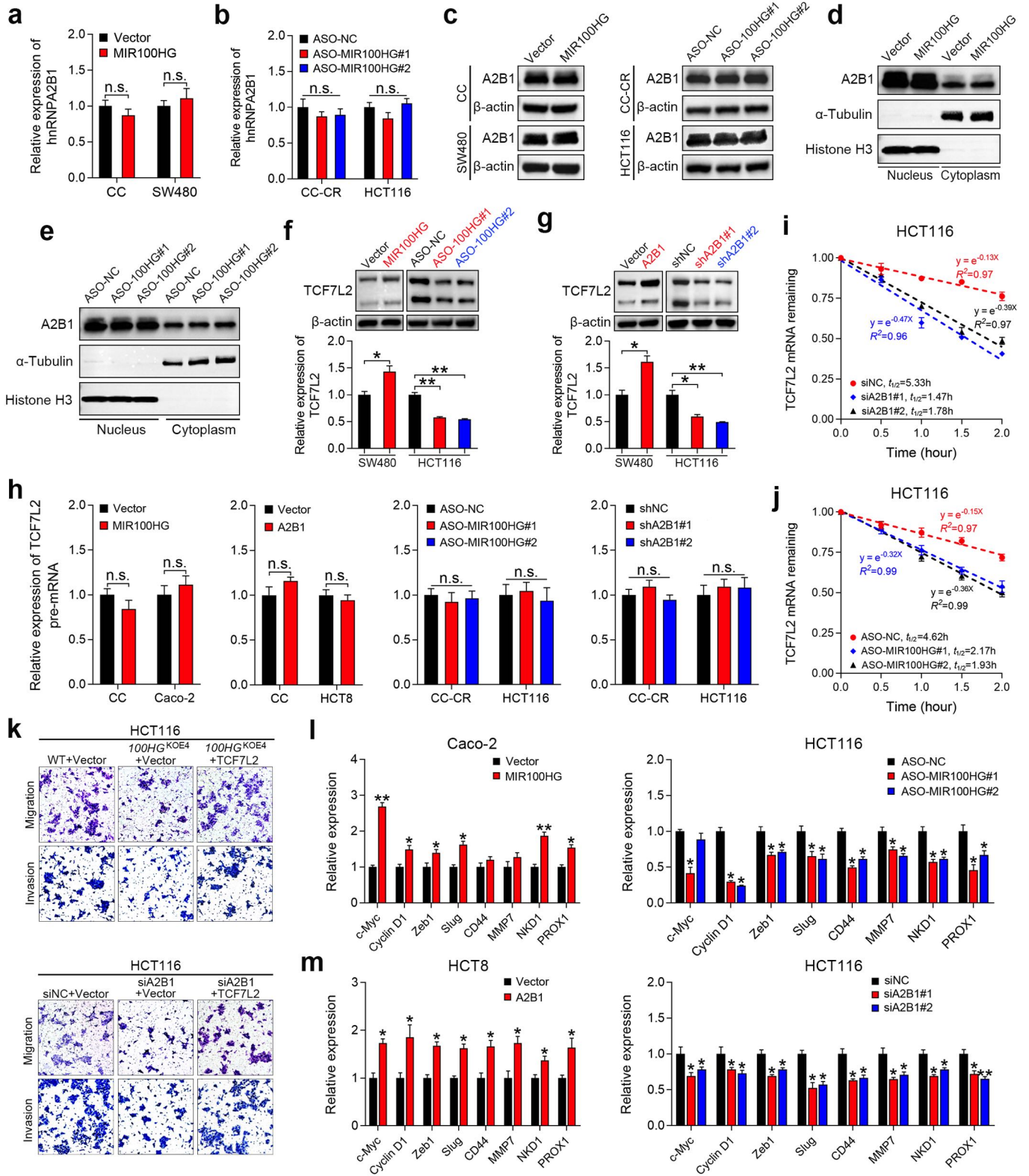


**c**





# Supplementary figure 4



# Supplementary figure 5

a



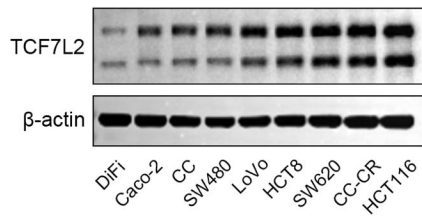
TCF7L2-WT (2482-2744):

5' ...aactgttatgtagttcggatagcttagttttaaagactgattaaaaacaaaagaaaaaaaaagc... 3'

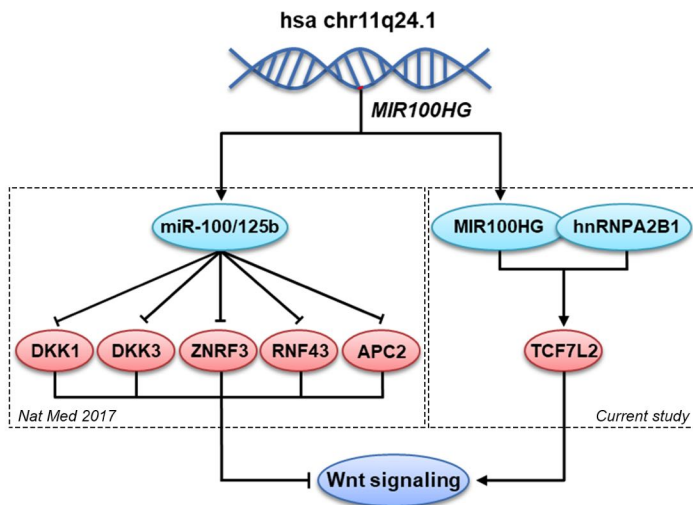
TCF7L2-mut:

5' ...aactgttatgtagttcggatagcttagttttaaagtctgattaaaaacaaaagaaaaaaaaagc... 3'

b



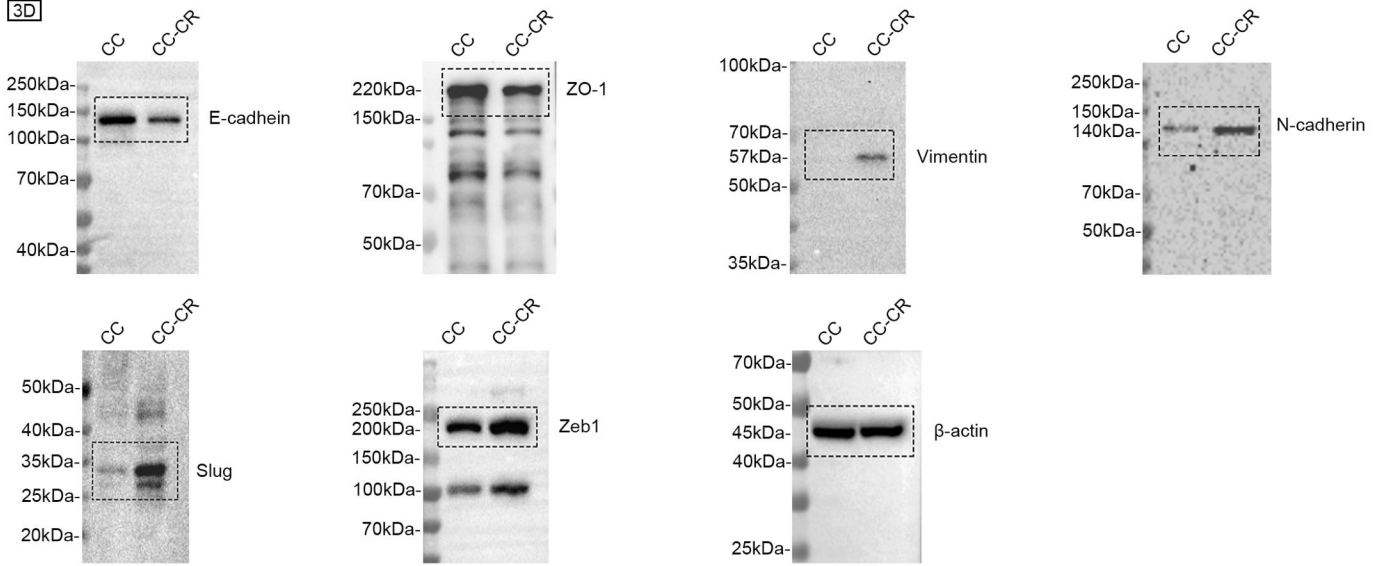
c



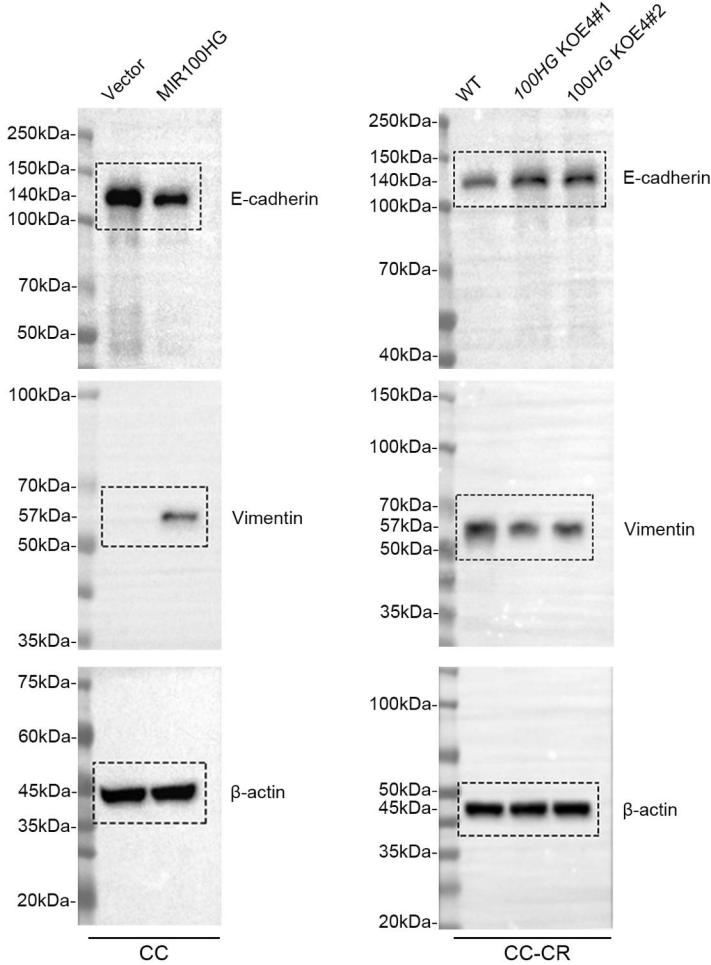
# Supplementary figure 6

## Figure 1c

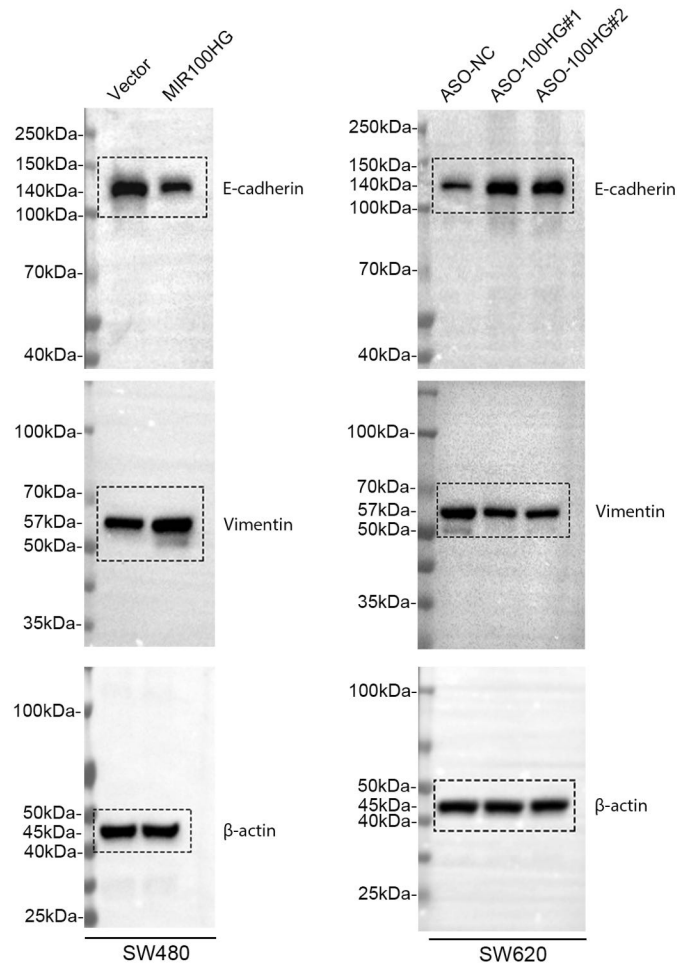
3D



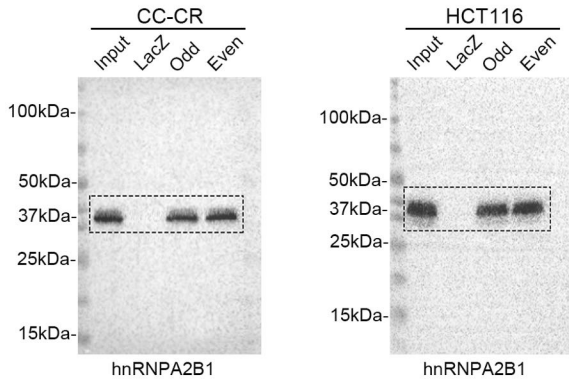
## Figure 1h



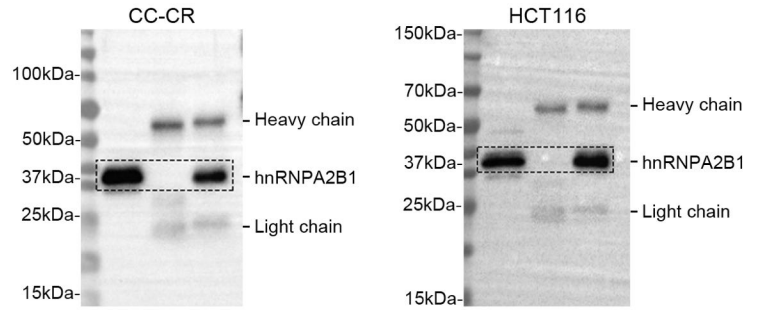
## Figure 1j



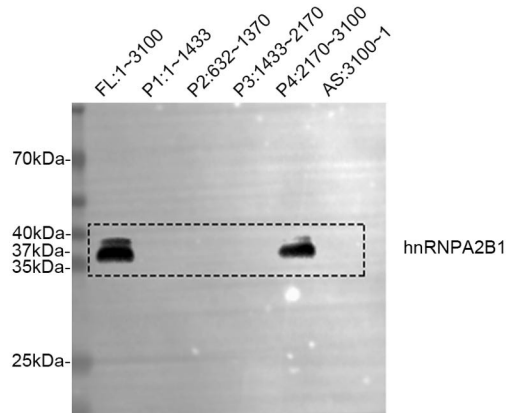
**Figure 3a**



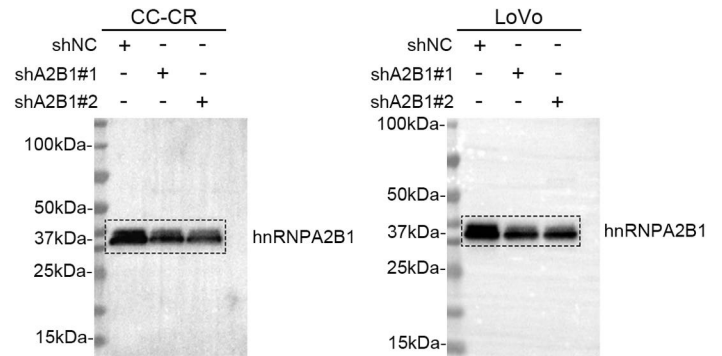
**Figure 3b**



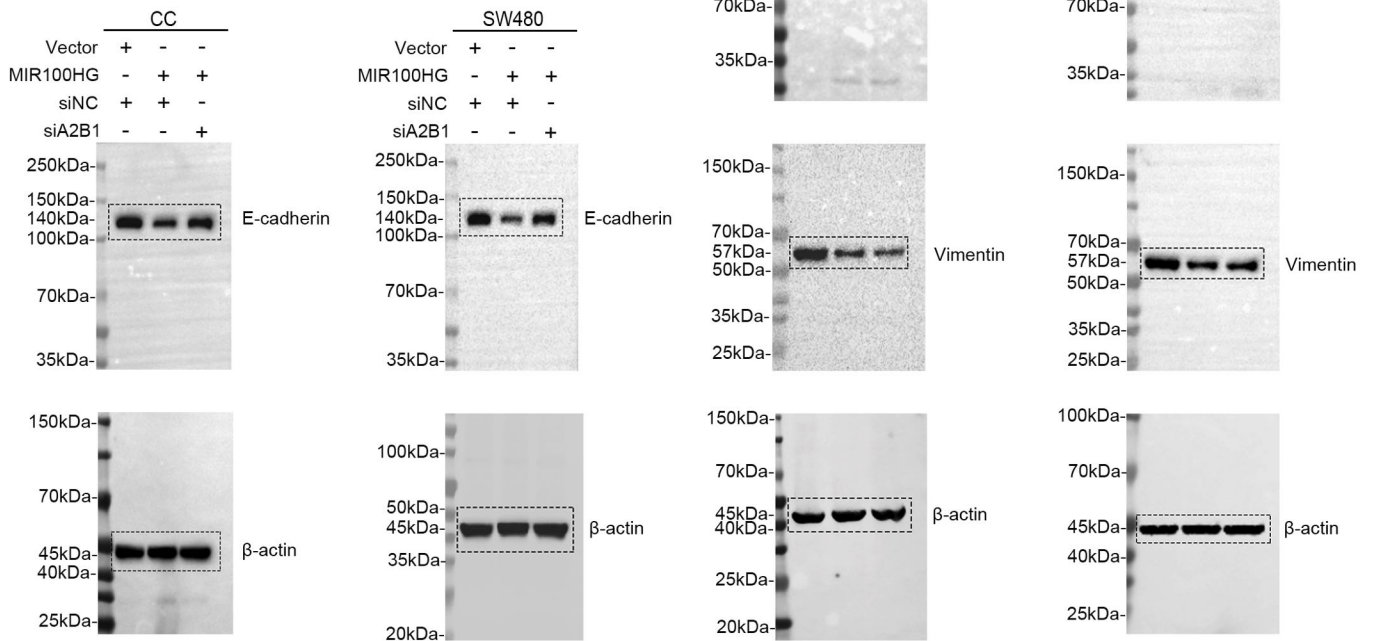
**Figure 3d**



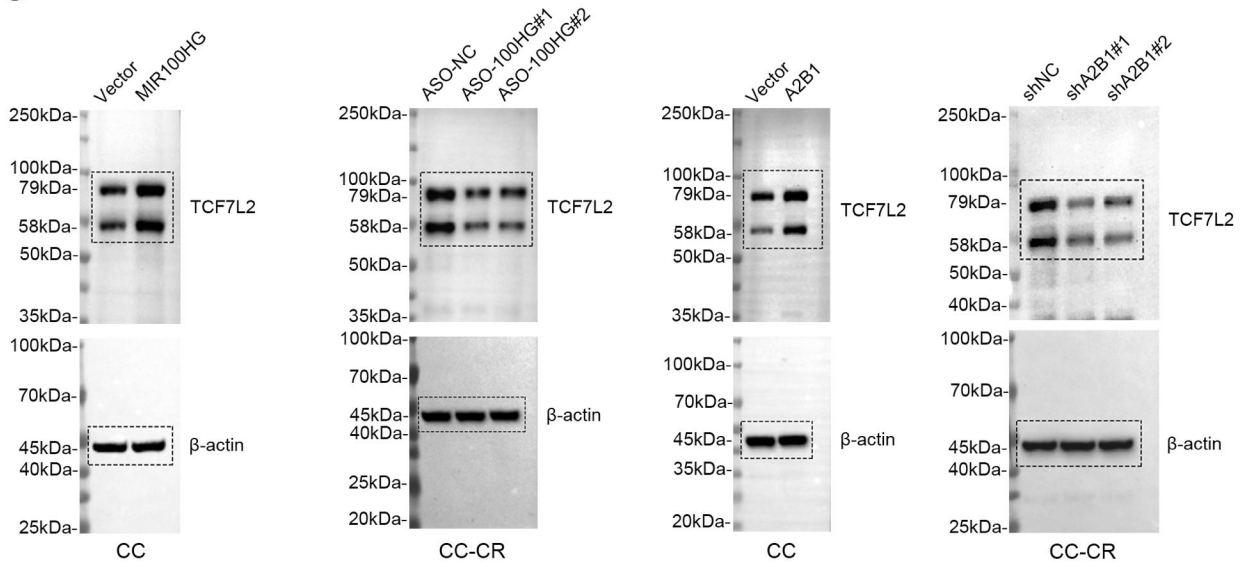
**Figure 3g**



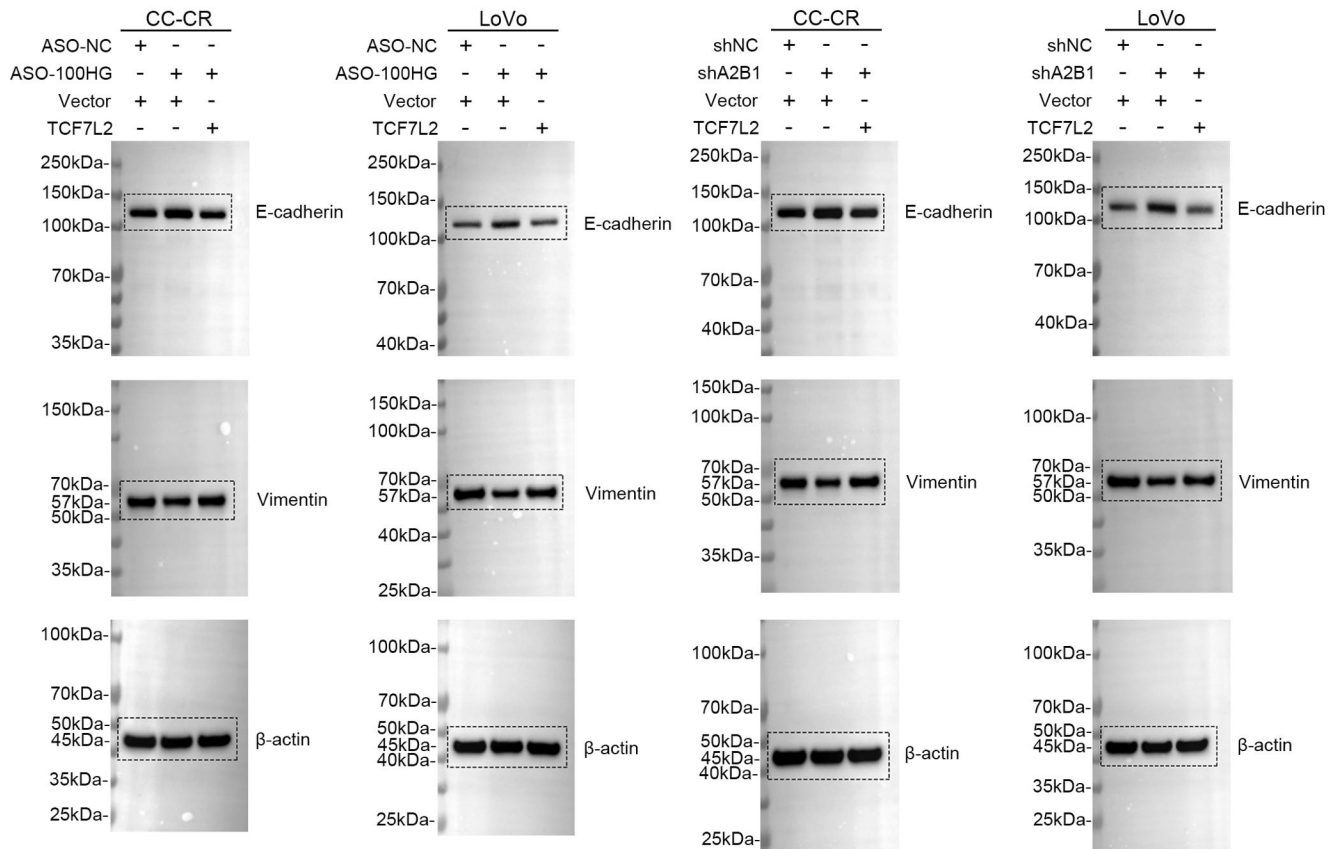
**Figure 3j**



**Figure 4b**

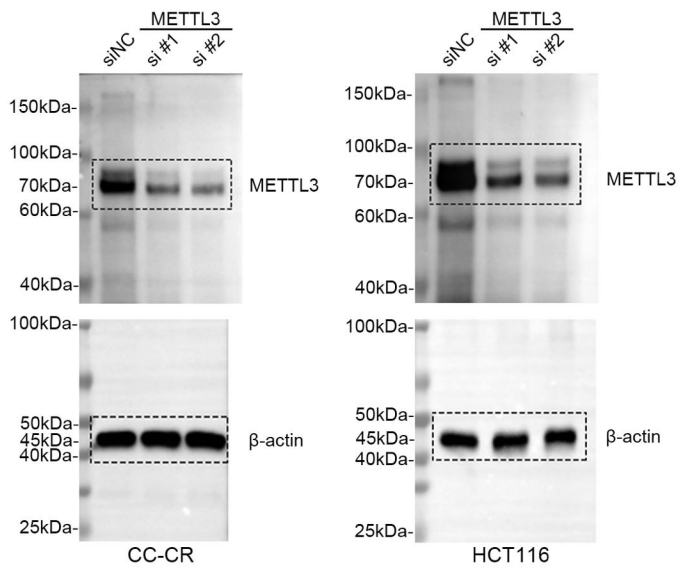


**Figure 4h**

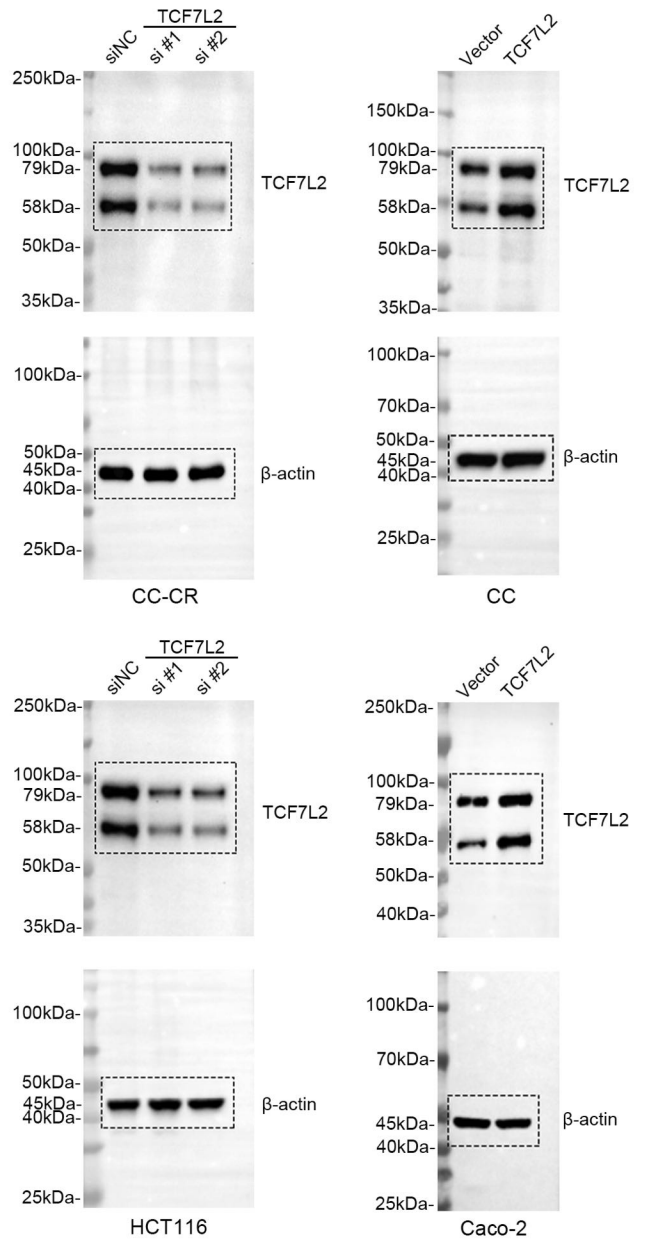




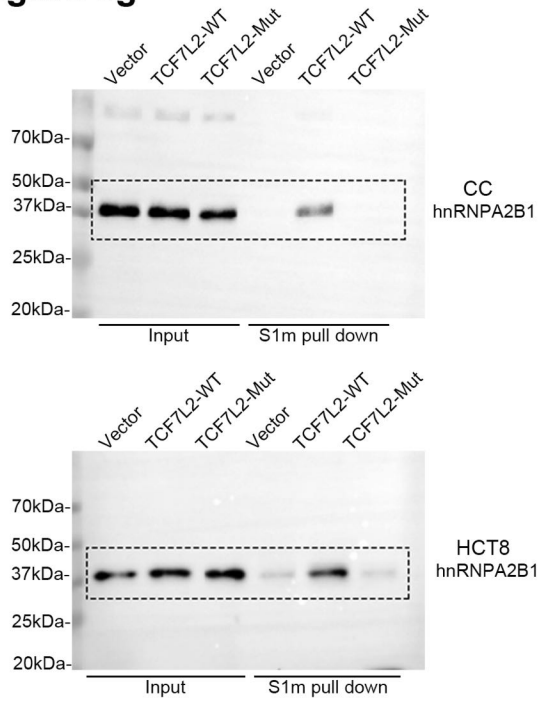
**Figure 5a**



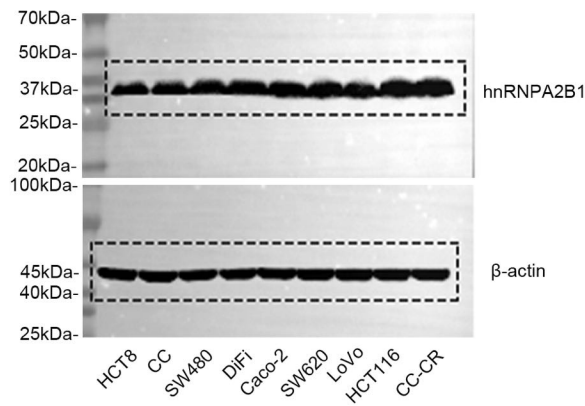
**Figure 6b**

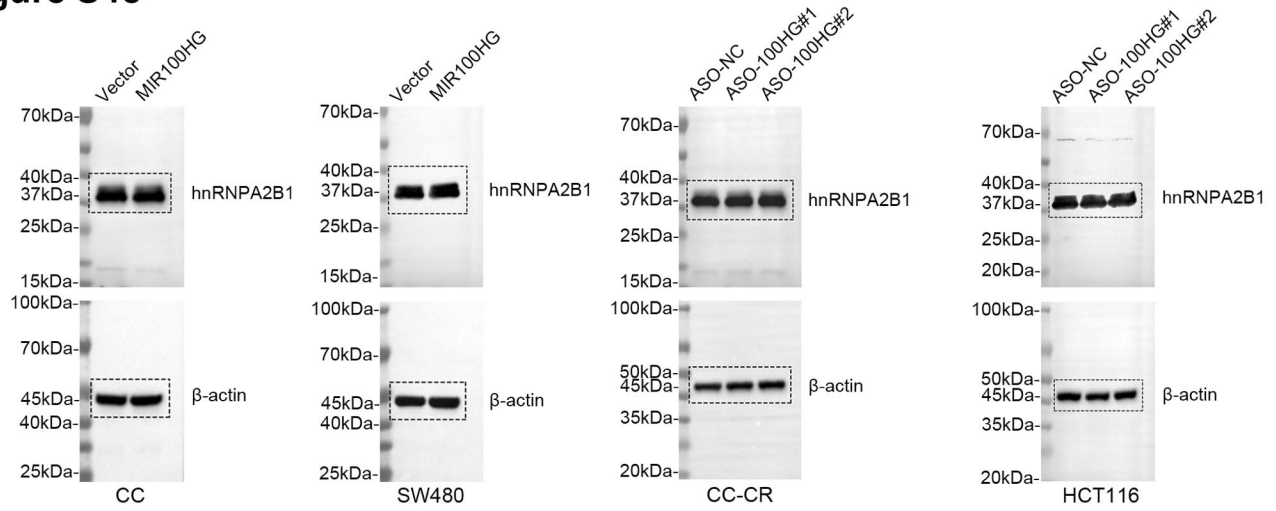
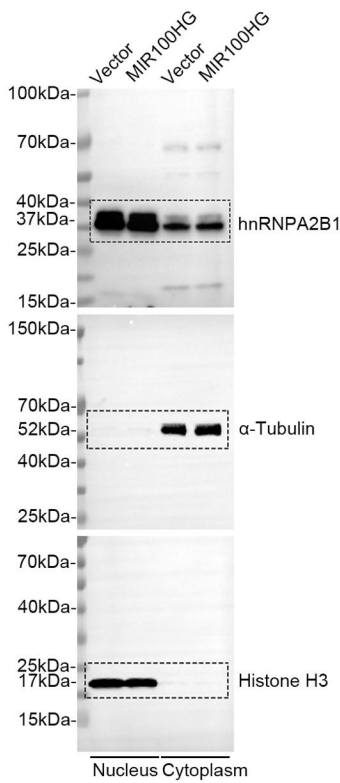
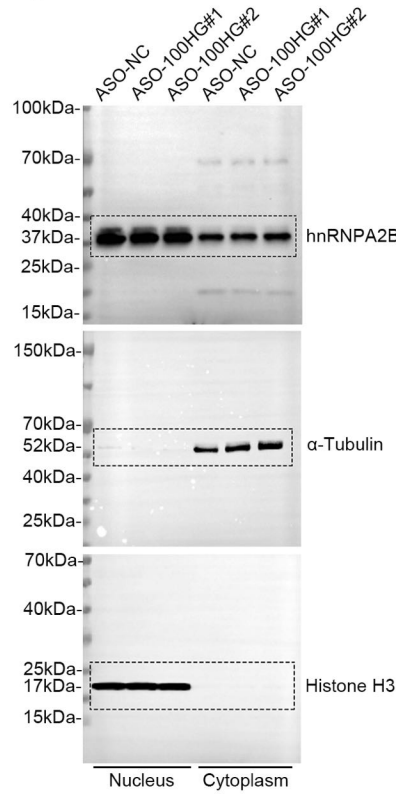
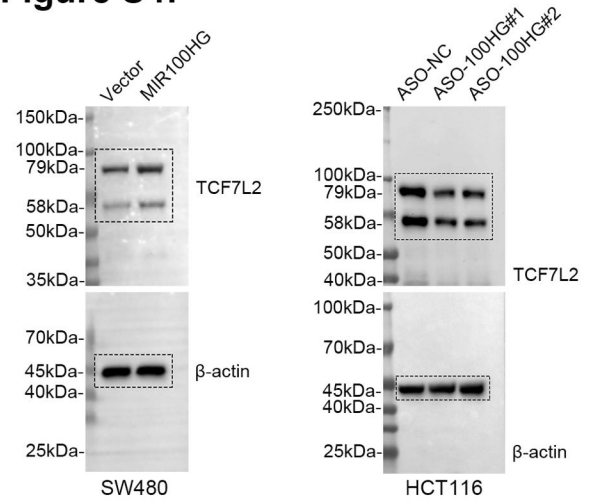
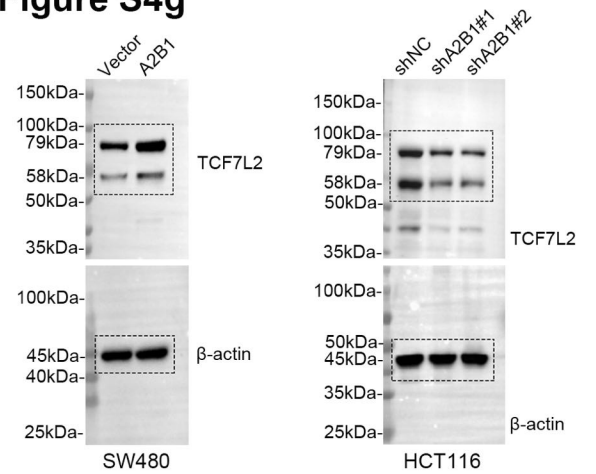


**Figure 5g**



**Figure S3a**



**Figure S4c****Figure S4d****Figure S4e****Figure S4f****Figure S4g****Figure S5b**