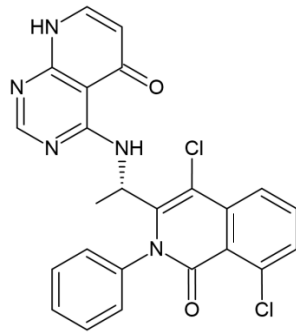


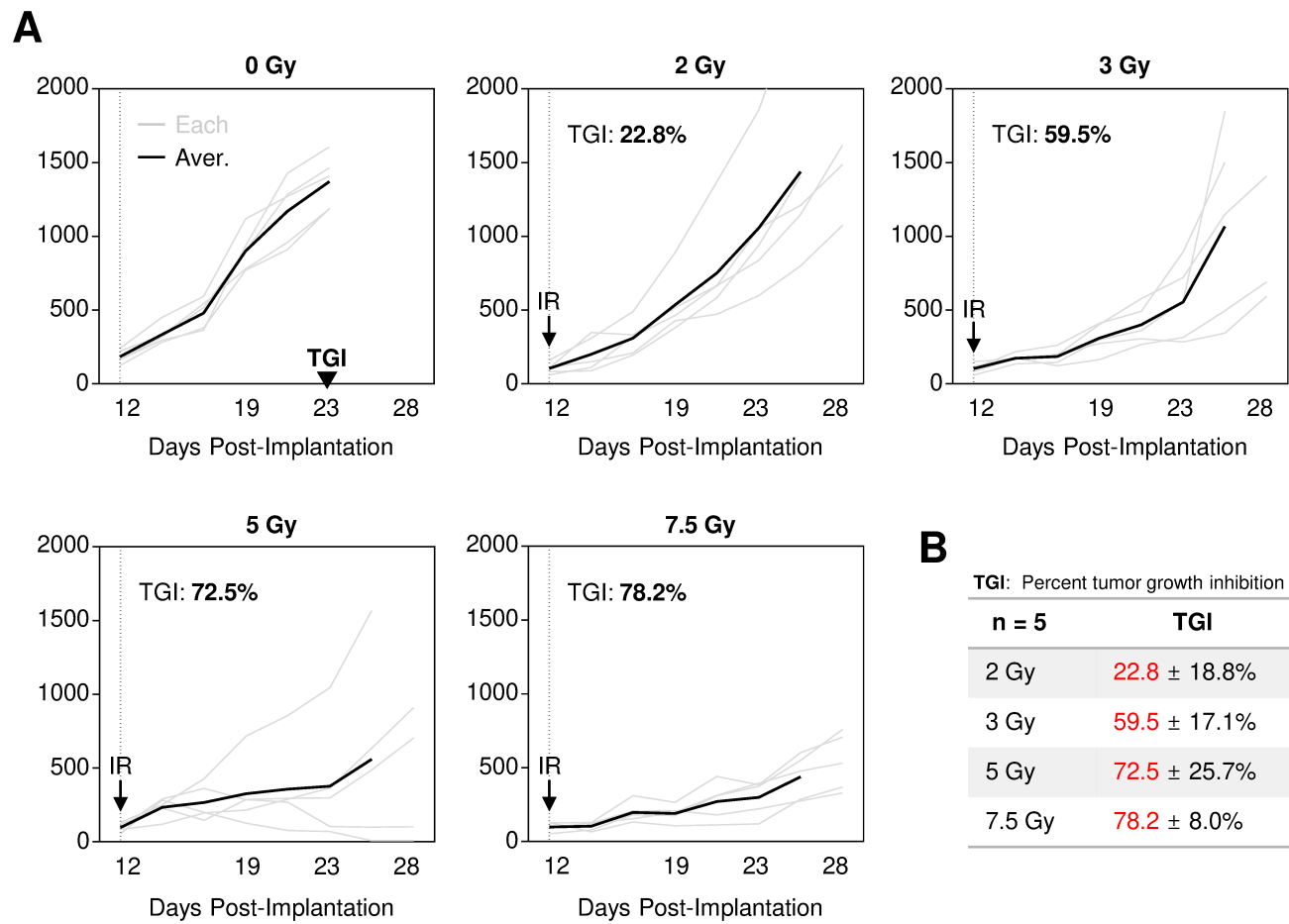
## Supplementary Figure 1.

**A****B**

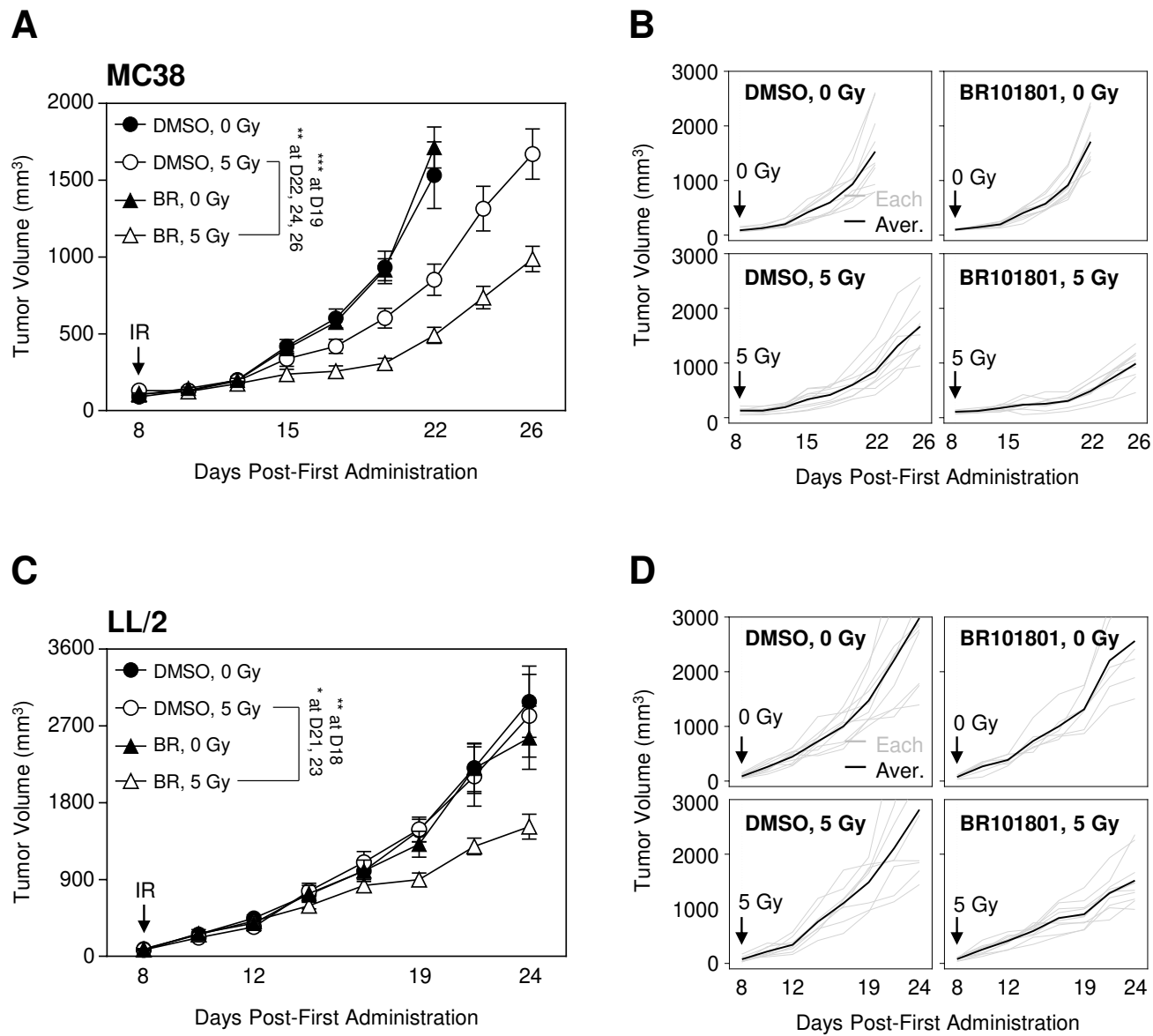
IC <sub>50</sub> (nM)	Enzymatic potency for PI3K subunits				
	α	β	γ	δ	DNA-PK
BR101801	106	171	15	2	6

IC<sub>50</sub> = Concentration causing 50% inhibition

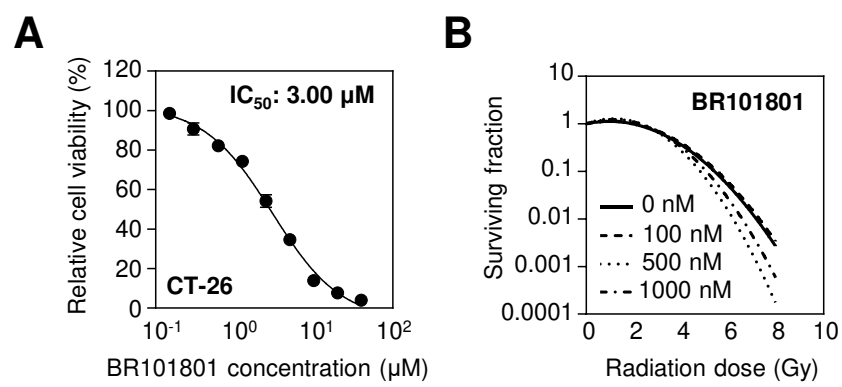
## Supplementary Figure 2.



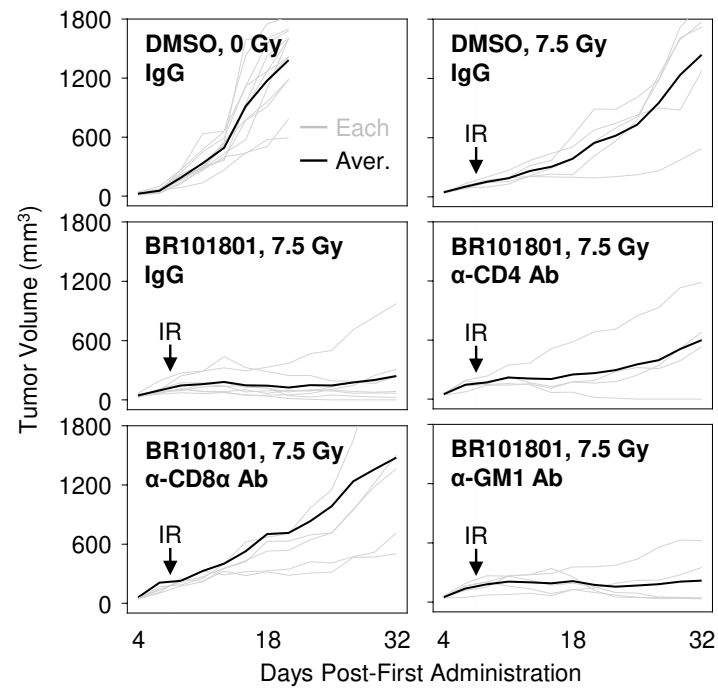
## Supplementary Figure 3.



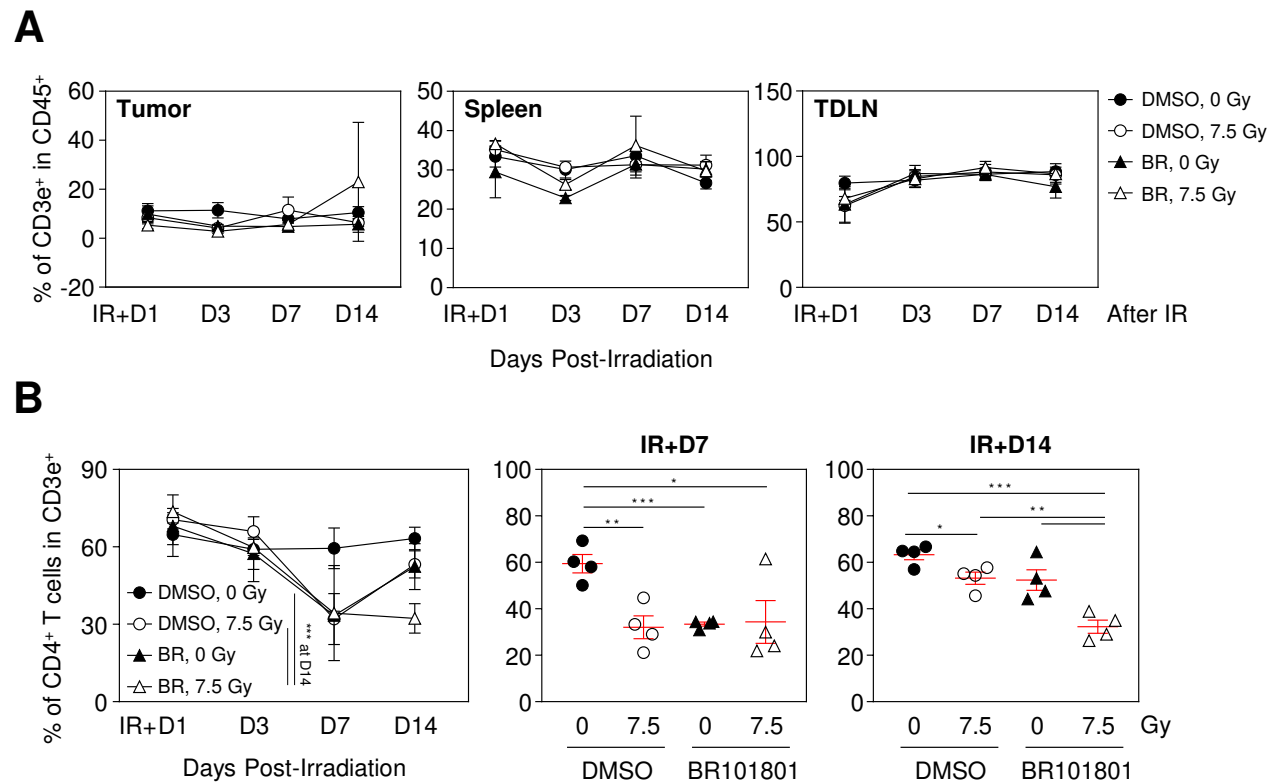
## Supplementary Figure 4.



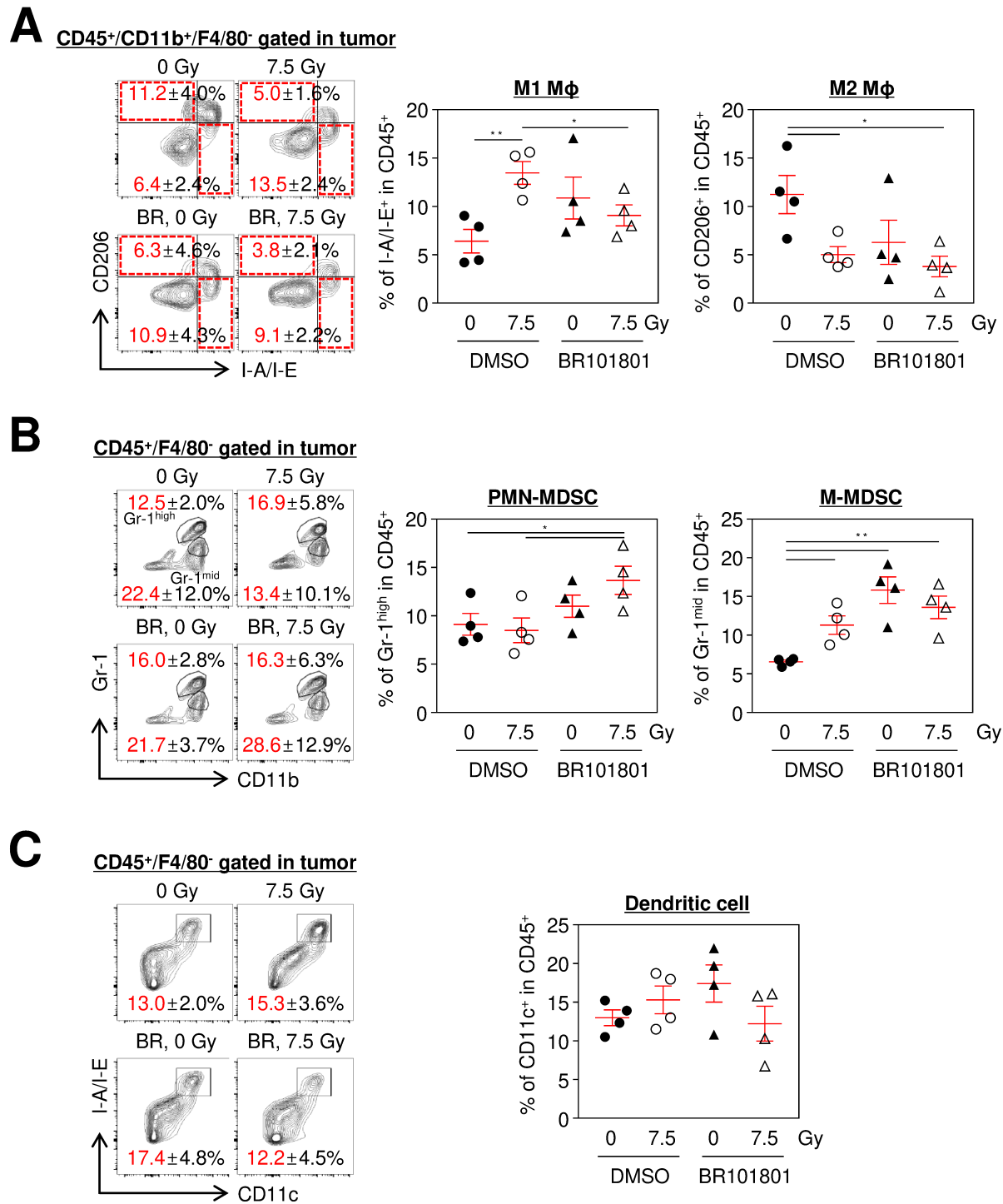
## Supplementary Figure 5.



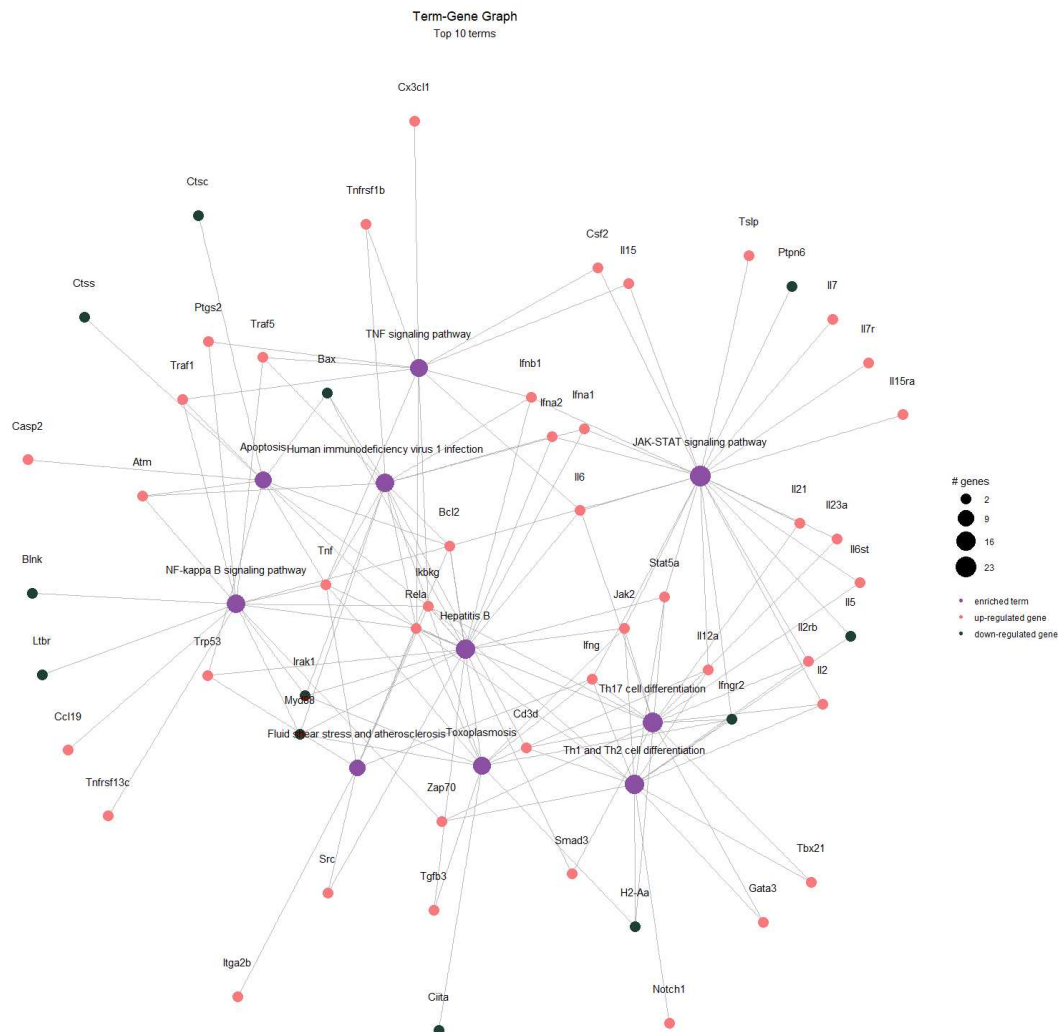
## Supplementary Figure 6.



## Supplementary Figure 7.

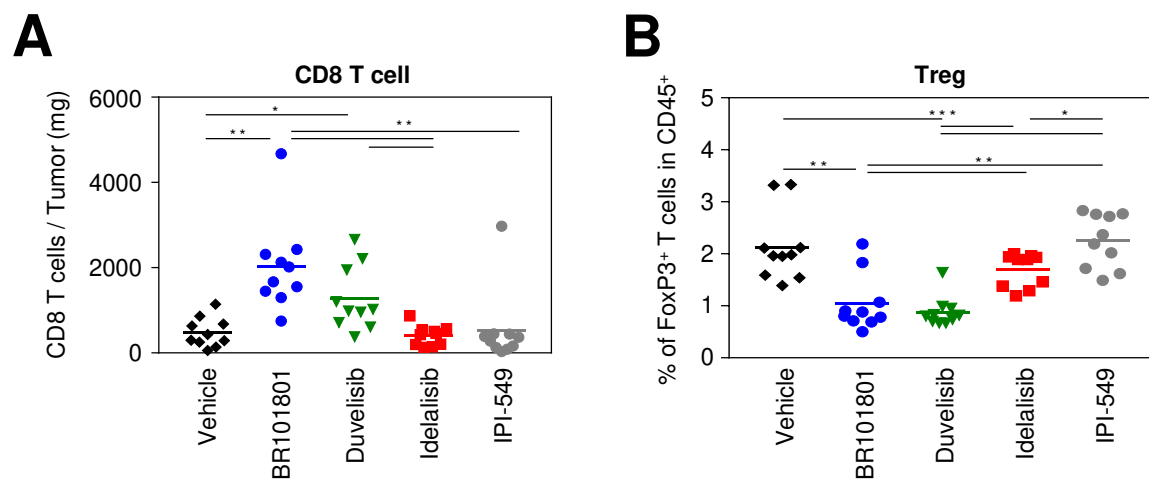


# Supplementary Figure 8.

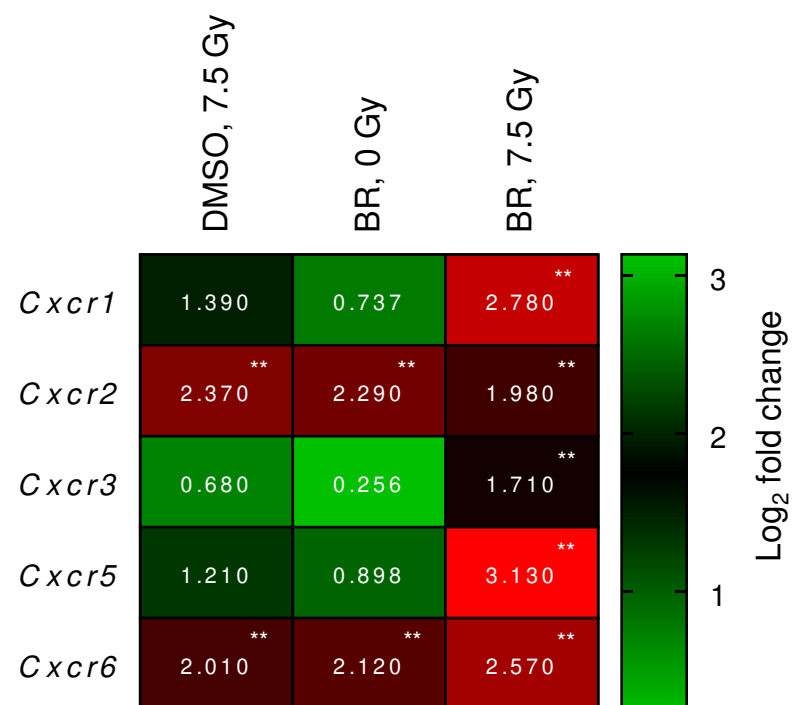




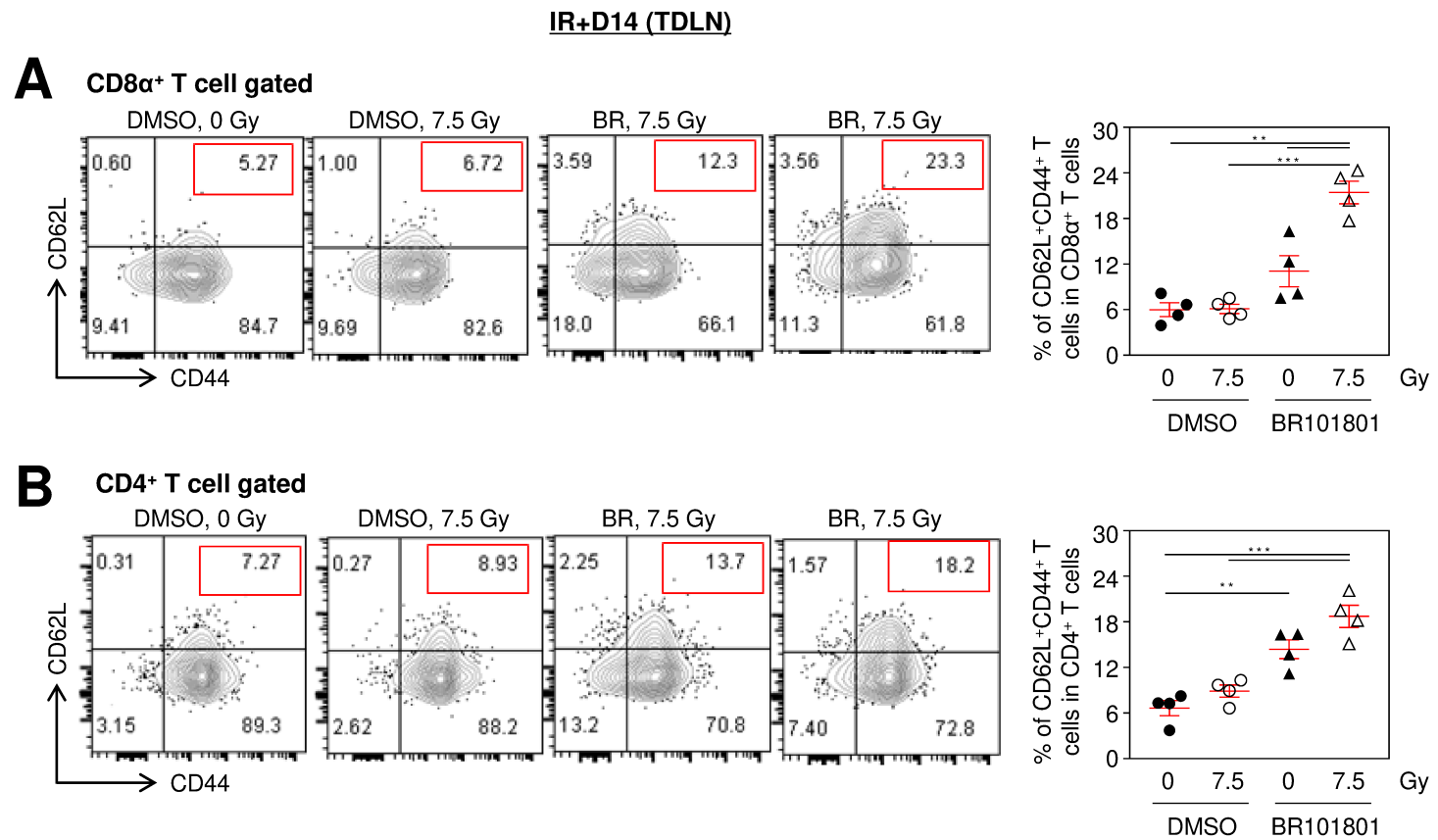
## Supplementary Figure 9.



## Supplementary Figure 10.



## Supplementary Figure 11.



## Supplementary Table 1.

Antibody	Fluorescence	Catalog No.	Clone	Company
anti-CD3e	FITC	553062	145-2C11	BD
anti-CD4	PE	553652	H129.19	BD
anti-CD8 $\alpha$	PerCP Cy5.5	551162	53-6.7	BD
anti-CD25	APC	101910	3C7	BioLegend
anti-PD-1	BV421	135217	29F.1A12	BioLegend
anti-CD45	BV510	563891	30-F11	BD
anti-CD11b	FITC	101206	M1/70	BioLegend
anti-F4/80	PE	123110	BM8	BioLegend
anti-Ly-6G/Ly-6C (Gr-1)	PerCP Cy5.5	108425	RB6-8C5	BioLegend
anti-CD206	PE-Cy7	141719	C068C2	BioLegend
anti-I-A/I-E	APC	107613	M5/114.15.2	BioLegend
anti-CD11c	BV421	117329	N418	BioLegend
anti-CD62L	PE	104410	MEL-14	BioLegend
anti-CD44	PerCP Cy5.5	45-0441-82	IM7	Invitrogen
anti-CD4	PE-Cy7	100421	GK1.5	BioLegend
anti-CD3	PerCP Cy5.5	100218	17A2	BioLegend
anti-CD127	PE-cy7	25-1271-82	A7R34	Invitrogen
anti-CD8 $\alpha$	APC	100712	53-6.7	BioLegend
anti-CD8 $\alpha$	BV510	100752	53-6.7	BioLegend
anti-CD45	Alexa700	147716	I3/2.3	BioLegend
anti-CD11b	APC-Cy7	101226	M1/70	BioLegend
anti-Ly-6G/Ly-6C (Gr-1)	BV510	108457	RB6-8C5	BioLegend
H-2Ld MuLV gp70 Tetramer-SP SYVYHQF	APC	TS M521-2		MBL

**Supplementary Table 2.**

<b>Antibody</b>	<b>Fluorescence</b>	<b>Catalog No.</b>	<b>Clone</b>	<b>Company</b>
anti-FoxP3	PE-Cy7	25-5773-82	FJK-16s	Invitrogen
anti-FoxP3	APC	17-5773-82	FJK-16s	Invitrogen
anti-FoxP3	BV421	126419	MF-14	BioLegend
anti-IFN- $\gamma$	BV510	505842	XMG1.2	BioLegend
anti-Granzyme B	BV421	396413	QA18A28	BioLegend

**Supplementary Table 3.**

<b>Primer Name</b>	<b>Forward</b>	<b>Reverse</b>
<i>Gapdh</i>	5'-TGAGCAAGAGAGGCCCTATC-3'	5'-AGGCCCTCCTGTTATTATG-3'
<i>Cxcl9</i>	5'-ATCTTCCTGGAGCAGTGTGG-3'	5'-AGTCCGGATCTAGGCAGGTT-3'
<i>Cxcl10</i>	5'-GTGAGAATGAGGGCCATAGG-3'	5'-GGCTAAACGCTTTCATTAAATTC-3'
<i>Cxcl11</i>	5'-AGGAAGGTCACAGCCATAGC-3'	5'-CGATCTCTGCCATTTTGACG-3'