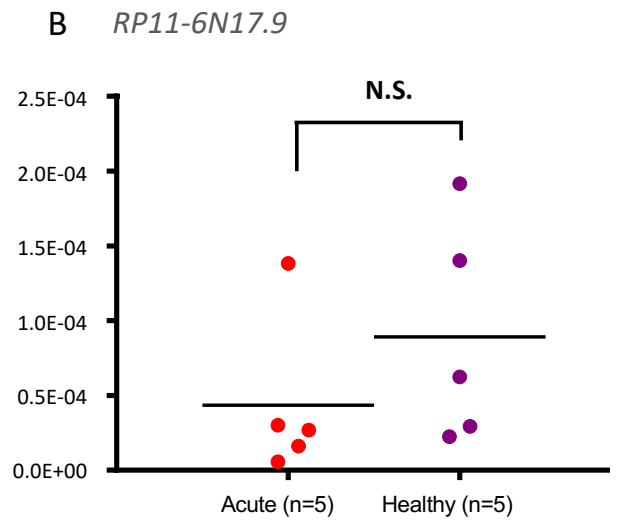
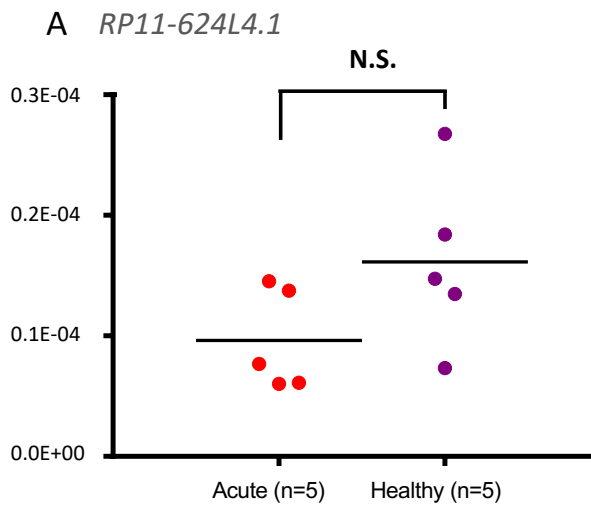


Supplementary Figure 1.



Supplementary Table 1. Clinical characteristics of cases subjected to CAGE-seq  
 KD; Kawasaki disease, HC; Healthy control, Res; IVIG responder, Non-Res; IVIG non-responder, M; male, F; female, RCA; right coronary artery, LCA; left coronary artery

	KD Res 1	KD Res 2	KD Res 3	KD Non-Res 1	KD Non-Res 2	KD Non-Res 3	HC 1	HC 2	HC 3
Age (month)	36	24	25	5	65	42	8	37	26
Sex	M	F	F	F	M	F	M	M	M
Fever duration (days)	5	5	5	8	8	8	-	-	-
CRP (mg/dL)	4.87	4.85	4.5	5.5	7.5	7.9	0.2	0.1	0.1
WBC (/mm <sup>3</sup> )	13520	14200	12370	18000	18930	12780	8200	6900	7600
Neutrophils (%)	58.6	70.2	65.0	74.4	88.9	77.0	40.3	44.0	42.3
Platelet ( $\times 10^4/\text{mm}^3$ )	46.2	35.1	37.3	35.1	26.9	45.7	31.0	27.5	24.0
Na (mmol/L)	137	133	134	133	138	137	137	136	136
AST (IU/L)	29	43	23	43	37	60	42	26	31.2
Maximum RCA (#1) (mm)	1.9	1.9	1.9	1.7	2.2	2.1	-	-	-
Maximum LCA (#5) (mm)	2.2	2.3	2.1	1.7	2.4	2.2	-	-	-

Supplementary Table 2. Genes contained in each GO term

Ontology	Term	feature names
BP	Immune system process	CLU,HP,EDNRB,CD177,CST7,HDAC9,ANXA3,IL1R2,JUP,PDE4B,PPBP,GPR97,SAMSN1,CR1,MYL9,THBS1,NAMPT,LRG1,TREML1,GRAP2,IL1RAP,GPR183,TRIB1,MERTK,PF4,SNBNO2,CXCL16,HIF1A,DYSF,C1QC,ULBP2,HSD3B7,GM2A,CXCR1,RIPK1,MAP3K8,TNFRSF10D,FPR2,EPAS1,FFAR2,PDE4D,IL1B,HLA-DOA,C1QB,ICAM1,CD274,C1QA,HAMP,NIT2,LILRA5,ADAM9,SLC11A1,ENPP2,PPARG,IFI27,CEBPG,IL8,PRKCH,CD1C,C19orf59,LTA4H,GYG1,EREG,CD1E,C10orf54,C3
	localization of cell	EDNRB,CD177,HDAC9,ANXA3,JUP,PDE4B,GPR97,THBS1,GPR183,TRIB1,MERTK,PF4,SNBNO2,CXCL16,HIF1A,DYSF,APEX1,ARID5B,HSD3B7,SLC22A16,CXCR1,SOD2,TNFRSF10D,FPR2,FFAR2,PDE4D,IL1B,ICAM1,SPOCK3,PTP4A3,CD274,ADAM9,ENPP2,GLUL,PPARG,NSMF,IL8,FGF13,TIMP1,EREG,C15orf38,C10orf54
	cell motility	EDNRB,CD177,HDAC9,ANXA3,JUP,PDE4B,GPR97,THBS1,GPR183,TRIB1,MERTK,PF4,SNBNO2,CXCL16,HIF1A,DYSF,APEX1,ARID5B,HSD3B7,SLC22A16,CXCR1,SOD2,TNFRSF10D,FPR2,FFAR2,PDE4D,IL1B,ICAM1,SPOCK3,PTP4A3,CD274,ADAM9,ENPP2,GLUL,PPARG,NSMF,IL8,FGF13,TIMP1,EREG,C15orf38,C10orf54
	cell migration	EDNRB,CD177,HDAC9,ANXA3,JUP,PDE4B,GPR97,THBS1,GPR183,TRIB1,MERTK,PF4,SNBNO2,CXCL16,HIF1A,DYSF,APEX1,ARID5B,HSD3B7,CXCR1,SOD2,TNFRSF10D,FPR2,FFAR2,PDE4D,IL1B,ICAM1,PTP4A3,CD274,ADAM9,ENPP2,GLUL,PPARG,NSMF,IL8,FGF13,TIMP1,C15orf38,C10orf54
	immune response	CLU,HP,CD177,CST7,ANXA3,IL1R2,JUP,PDE4B,PPBP,GPR97,SAMSN1,CR1,THBS1,LRG1,TREML1,GRAP2,IL1RAP,GPR183,PF4,SNBNO2,CXCL16,DYSF,C1QC,ULBP2,GM2A,CXCR1,RIPK1,FFAR2,FFAR2,PDE4D,IL1B,HLA-DOA,C1QB,ICAM1,CD274,C1QA,HAMP,NIT2,LILRA5,SLC11A1,ENPP2,PPARG,IFI27,CEBPG,PRKCH,CD1C,C19orf59,LTA4H,GYG1,EREG,CD1E,C3
	acute inflammatory response	CLU,HP,EDNRB,CR1,C1QC,FFAR2,IL1B,C1QB,ICAM1,C1QA,HAMP,PPARG,C3
	inflammatory response	CLU,HP,EDNRB,CST7,HDAC9,IL1R2,CR1,THBS1,NAMPT,IL1RAP,SNBNO2,HIF1A,C1QC,GHRL,FPR2,FFAR2,IL1B,C1QB,ICAM1,C1QA,HAMP,LILRA5,SLC11A1,PPARG,IL8,TIMP1,C3
	response to stimulus	CLU,MCTP2,HP,AQP9,EDNRB,CD177,CST7,HDAC9,ANXA3,IL1R2,JUP,ABCA1,PDE4B,PPBP,GPR97,SAMSN1,CR1,MYL9,THBS1,NAMPT,LRG1,TREML1,GNG11,ACSL1,LITAF,SLA,GRAP2,LMNB1,IL1RAP,GPR183,GPR133,TRIB1,MERTK,ALPL,PF4,SNBNO2,SNBNO2,CXCL16,HIF1A,DYSF,APEX1,ARID5B,TGFA,C1QC,ARHGAP22,ULBP2,CHRNE,GHRL,LRRC70,HSD3B7,GM2A,CXCR1,RIPK1,SOD2,MAP3K8,TNFRSF10D,FPR2,EPAS1,FFAR2,PDE4D,IL1B,HLA-DOA,C1QB,ICAM1,PTP4A3,CD274,C1QA,HAMP,NIT2,LILRA5,MMRN1,ADAM9,SLC11A1,ENPP2,SDCBP2,GLUL,PPARG,EHD1,NSMF,IFI27,CEBPG,DHODH,IL8,PLK3,PRKCH,PLA2G16,MAP4K1,FGF13,CD1C,C19orf59,SLC25A6,CTNND1,LTA4H,GNG10,TIMP1,GYG1,SERPINB2,NGFRAP1,LGALS12,EREG,CD1E,RASSF4,ACTA2,PTGIR,HPGD,FAM129A,C3
	response to external stimulus	CLU,HP,EDNRB,CST7,ANXA3,IL1R2,JUP,ABCA1,PDE4B,PPBP,CR1,THBS1,NAMPT,LRG1,ACSL1,LITAF,GPR183,TRIB1,ALPL,PF4,SNBNO2,CXCL16,DYSF,C1QC,GHRL,HSD3B7,CXCR1,FPR2,FFAR2,PDE4D,IL1B,C1QB,ICAM1,C1QA,HAMP,LILRA5,ADAM9,SLC11A1,ENPP2,GLUL,PPARG,IFI27,DHODH,IL8,PLA2G16,SLC25A6,SERPINB2,ACTA2,PTGIR,HPGD,C3
	leukocyte chemotaxis	EDNRB,PDE4B,THBS1,GPR183,PF4,DYSF,HSD3B7,CXCR1,FPR2,FFAR2,PDE4D,IL8
locomotion	EDNRB,CD177,HDAC9,ANXA3,JUP,PDE4B,GPR97,THBS1,GPR183,TRIB1,MERTK,PF4,SNBNO2,CXCL16,HIF1A,DYSF,APEX1,ARID5B,GHRL,HSD3B7,SLC22A16,CXCR1,SOD2,TNFRSF10D,FPR2,FFAR2,PDE4D,IL1B,ICAM1,SPOCK3,PTP4A3,CD274,ADAM9,ENPP2,GLUL,PPARG,NSMF,IL8,FGF13,TIMP1,EREG,C15orf38,C10orf54	
cell surface receptor signaling pathway	EDNRB,CD177,IL1R2,JUP,ABCA1,PDE4B,GPR97,CR1,THBS1,LRG1,ACSL1,GRAP2,LMNB1,IL1RAP,GPR133,TRIB1,MERTK,PF4,SNBNO2,CXCL16,HIF1A,ARID5B,TGFA,CHRNE,GHRL,CXCR1,RIPK1,SOD2,MAP3K8,TNFRSF10D,FPR2,FFAR2,PDE4D,IL1B,ICAM1,PTP4A3,CD274,ADAM9,PPARG,IFI27,IL8,PRKCH,CTNND1,TIMP1,SERPINB2,NGFRAP1,EREG,PTGIR,HPGD,C3	
response to lipopolysaccharide	EDNRB,ABCA1,PDE4B,LITAF,TRIB1,ALPL,SNBNO2,PDE4D,IL1B,ICAM1,HAMP,ADAM9,SLC11A1,IL8,PTGIR,HPGD	
cellular response to lipopolysaccharide	EDNRB,ABCA1,PDE4B,LITAF,TRIB1,SNBNO2,PDE4D,IL1B,ICAM1,HAMP,ADAM9,IL8	
response to molecule of bacterial origin	EDNRB,ABCA1,PDE4B,LITAF,TRIB1,ALPL,SNBNO2,PDE4D,IL1B,ICAM1,HAMP,ADAM9,SLC11A1,IL8,PTGIR,HPGD	
cellular response to molecule of bacterial origin	EDNRB,ABCA1,PDE4B,LITAF,TRIB1,SNBNO2,PDE4D,IL1B,ICAM1,HAMP,ADAM9,IL8	
leukocyte migration	EDNRB,CD177,PDE4B,THBS1,GPR183,MERTK,PF4,DYSF,HSD3B7,CXCR1,TNFRSF10D,FPR2,FFAR2,PDE4D,ICAM1,IL8	
response to oxygen-containing compound	CLU,HP,AQP9,EDNRB,HDAC9,JUP,ABCA1,PDE4B,THBS1,NAMPT,ACSL1,LITAF,TRIB1,ALPL,SNBNO2,HIF1A,APEX1,GHRL,RIPK1,SOD2,FPR2,FFAR2,PDE4D,IL1B,ICAM1,HAMP,ADAM9,SLC11A1,GLUL,PPARG,NSMF,DHODH,IL8,PLK3,MAP4K1,TIMP1,ERE G,PTGIR,HPGD	
cell activation	CLU,HP,CD177,CST7,HDAC9,ANXA3,JUP,PPBP,GPR97,SAMSN1,CR1,MYL9,THBS1,NAMPT,LRG1,TREML1,GRAP2,GPR183,MERTK,PF4,SNBNO2,DYSF,ULBP2,GM2A,CXCR1,MAP3K8,FPR2,IL1B,HLA-DOA,ICAM1,CD274,C1QA,NIT2,LILRA5,ADAM9,SLC11A1,CEBPG,IL8,PRKCH,CD1C,C19orf59,LTA4H,TIMP1,GYG1,C10orf54,C3	
cell chemotaxis	EDNRB,PDE4B,THBS1,GPR183,PF4,DYSF,HSD3B7,CXCR1,FPR2,FFAR2,PDE4D,IL8	
transmembrane signaling receptor activity	EDNRB,IL1R2,ABCA1,CR1,IL1RAP,GPR183,GPR133,CXCR1,TNFRSF10D,FPR2,FFAR2,HLA-DOA,ICAM1,PPARG,TNFRSF10C,PTGIR,HPGD	
receptor ligand activity	PPBP,NAMPT,PF4,CXCL16,TGFA,GHRL,IL1B,HAMP,IL8,FGF13,TIMP1	
receptor regulatory activity	PPBP,NAMPT,PF4,CXCL16,TGFA,GHRL,IL1B,HAMP,IL8,FGF13,TIMP1	
signaling receptor binding	CLU,EDNRB,CD177,ABCA1,PPBP,THBS1,NAMPT,LRG1,PF4,CXCL16,HIF1A,TGFA,ULBP2,GHRL,RIPK1,FPR2,PDE4D,IL1B,ICAM1,HAMP,ADAM9,PPARG,IL8,FGF13,CTNND1,TIMP1,NGFRAP1,EREG,C3	
signaling receptor activity	EDNRB,IL1R2,ABCA1,CR1,IL1RAP,GPR183,GPR133,CHRNE,CXCR1,TNFRSF10D,FPR2,FFAR2,HLA-DOA,ICAM1,PPARG,TNFRSF10C,PTGIR,HPGD	
molecular transducer activity	EDNRB,IL1R2,ABCA1,CR1,IL1RAP,GPR183,CHRNE,CXCR1,TNFRSF10D,FPR2,FFAR2,HLA-DOA,ICAM1,PPARG,TNFRSF10C,PTGIR,HPGD	
cytokine activity	NAMPT,PF4,CXCL16,IL1B,IL8,TIMP1	
G protein-coupled receptor activity	EDNRB,GPR183,GPR133,CXCR1,FPR2,FFAR2,PPARG,PTGIR,HPGD	
chemokine activity	PF4,CXCL16,IL8	
cytokine receptor binding	LRG1,PF4,CXCL16,RIPK1,IL1B,IL8,NGFRAP1	
growth factor activity	PPBP,TGFA,FGF13,TIMP1	
amine transmembrane transporter activity	AQP9,SLC22A16	
chemokine receptor binding	PF4,CXCL16,IL8	
calcium ion binding	MCTP2,ANXA3,MYL9,THBS1,PGS1,DYSF,TMEM2,MMRN1,ENPP2,EHD1	
integrin binding	CD177,THBS1,IL1B,ICAM1,ADAM9	
serine-type endopeptidase activity	NA	
hemoglobin binding	HPR,HP	
interleukin-1 receptor activity	IL1R2,IL1RAP	
G protein-coupled receptor binding	EDNRB,PF4,CXCL16,GHRL,PDE4D,IL8,C3	
prostanoid receptor activity	PPARG,HPGD	