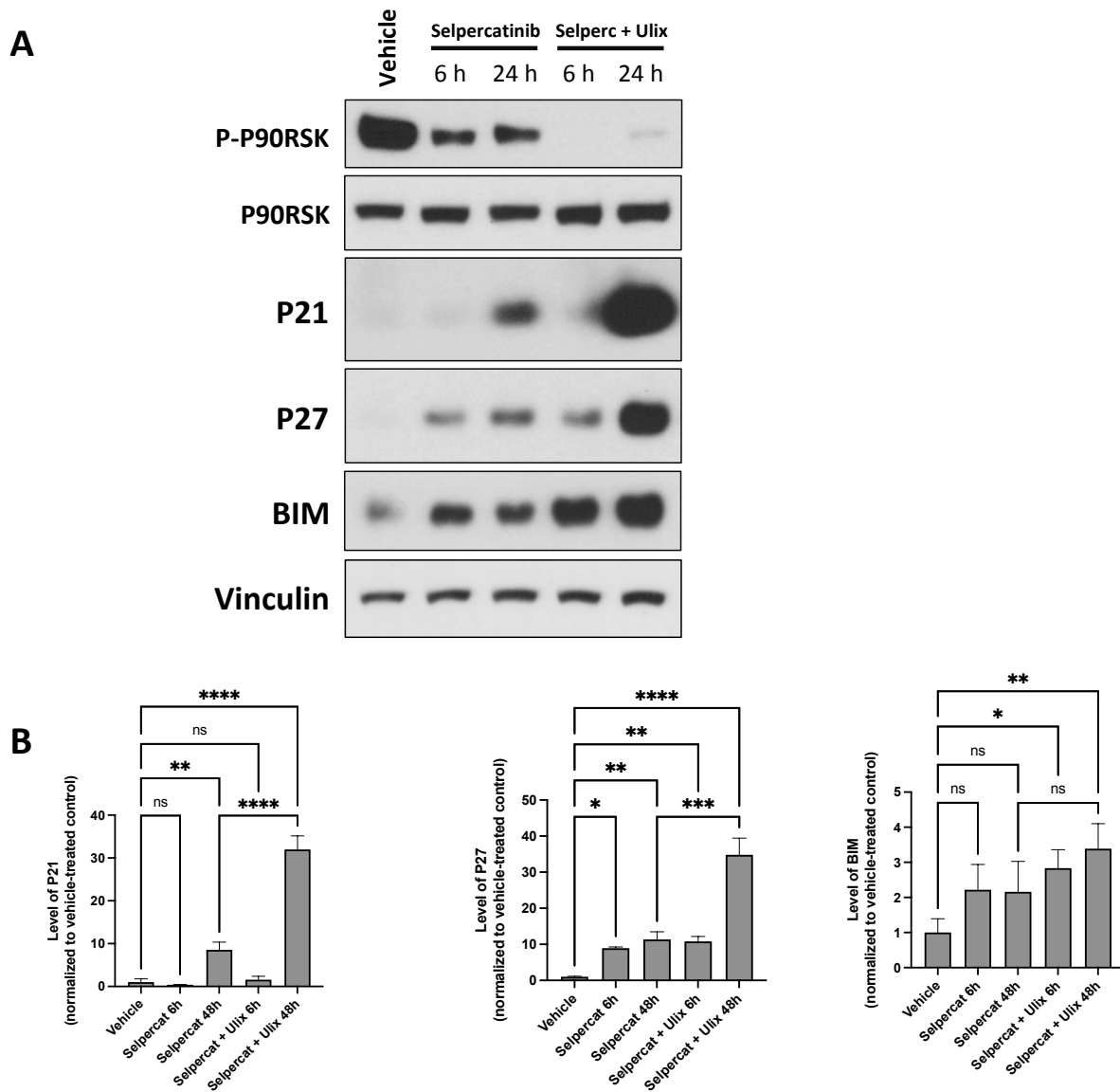


# Supplementary Figure S6



**Supplementary Figure S6. Combined inhibition of RET and ERK is more effective at blocking ERK signaling and inducing apoptosis and cell cycle blockade than monotherapy.** HMSC-RET cells were serum-starved for 24 h then treated with selpercatinib (Selpercat, 100 nM) alone or in combination with ulixertinib (Ulix, 250 nM) for 6 or 24 h. Cell extracts were then prepared and western blotting conducted. Representative immunoblots are shown. Bands from two independent experiments were quantitated by densitometry and are presented in the accompanying graphs. Vinculin was used as loading control. Protein expression is normalized to the vehicle-treated controls. Results represent the mean  $\pm$  SD of two independent experiments. \* $p < 0.05$ , \*\* $P < 0.001$ , \*\*\* $P = 0.0005$ , \*\*\*\* $P < 0.0001$ .